



Souvenir Programme 6d.

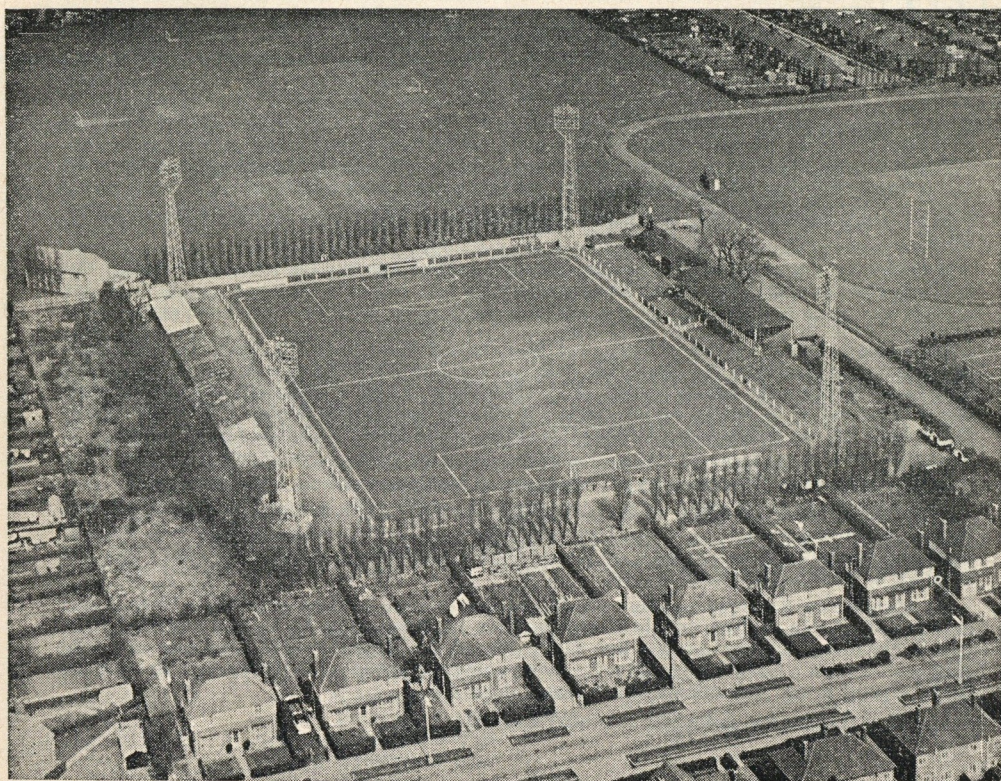
SEASON 1965-66.

SATURDAY, 4th DEC., 1965.

K.O. 3 p.m

F.A. Cup. 2nd Rd.

CORBY TOWN
v.
LUTON TOWN



THE POPULAR **"Pink 'Un"** THE
SPORTS TELEGRAPH
Still as popular as ever. **3d.—Every Saturday Evening—3d.**
All Your National and Local Sports reports.



WELL SAVED

IF INVESTED WITH

Northampton & Midlands
BUILDING SOCIETY
PHONE 2687

MEMBER OF THE BUILDING SOCIETIES ASSOCIATION

34 ELIZABETH STREET, CORBY

MANAGER'S NOTES

Today's game will go down in the Club's history, and a big welcome for the opposition Luton Town, whom I'm sure will be more worried about the result than ourselves.

More or less our full staff have watched Luton in action, and I know we have no easy task on today.

Full-time training may be the deciding factor, but D. Yates has for weeks, stepped up our training, and I'm sure fitness won't let us down.

I feel this game hinges on the team to score the first goal.

Tony Read a big favourite at Corby last year, scored a hat-trick last Saturday and is very dangerous near goal with his head. The result of last Saturday's game was something we just have to accept in soccer, having at least 75% of this game against Wimbledon, and playing some of our best football for weeks, we just could not beat the new signing in goal, J. Smith, who cost the club £1,500 the previous day from Q.P.R. What could we do with that sort of money?

Winning 3-1 at Wisbech on Wednesday keeps us top of the Floodlit Cup competition. 3 good goals from C. McGlinchy, T. Needham, J. McNamee, saw us win comfortably.

J. McNamee having finished a trial period with the club, has now signed for the rest of the season, his continuous scoring brings him well in the running for a 1st team place. Jesse Pye had every right to feel dejected, as his team played some good football, one of these weeks they will get a lot of goals as the ability is there.

At Margate on Saturday we were playing very well and a goal up when Alan McBain was needlessly fouled in the 30th minute and had to have 3 stitches put in his leg and took no further part in the match, a nasty injury to Bob Rielly reduced us to 9 fit men only, I feel sure we would have won at least a point with a full team as we were well on top until McBain had to leave the field for good in the 30th minute, but we went down 2-1.

Mr. F. C. Deeley has given Ball for today's match.

Yours in sport.

TOM HADDEN

for

PINK

Market Chambers

Corby

Tel. — 3279

Removals & Storage

Packing & Shipping

ESTIMATES FREE

JONES

Welcome to 'The Hatters' — Luton Town.

FOOTBALL LEAGUE POSITIONS

	P.	Pts.
Torquay	20	29
Tranmere	21	28
Chester	19	25
Colchester	17	23
Luton	18	23

Yes Luton are in the promotion race with a really good chance of being in the Top Four.

INTRODUCING THE PLAYERS—

RICHARD EDWARDS (Full Back)—Was recommended to us by a local scout, and signed Amateur forms in October, 1963. He gained his place in our Combination side immediately, and held it throughout that Season. He was offered Professional terms in June, 1964, and we look to him to establish himself as a regular; **JIMMY GIBSON (Wing Half)**—He was born at Belfast, his first English Club being Newcastle United. Then after a spell with Cambridge United, he transferred to Luton on February 2nd, 1965, when he won and retained a First Team place for the remainder of the Season. Regular First Team player this season; **BILLY HARBER (Forward)**—Joined Luton from Swindon, where he played Inside Forward, on a Free Transfer in September, 1964, but made his debut for Luton as a Winger, and towards the end of last season held this position. Although his home is in Stepney, he was born practically on Luton's door step at Hitchin. Made 6 first team appearances this season; **FREDDY JARDINE (Full Back)**—Born in Edinburgh. Played for Dundee for two seasons before coming to Luton at the end of Season 1960/61. He came as an Outside Left, but was successfully converted to a Full Back, where he figured last Season in 32 First Team games. **JOHN MOORE (Wing Half)**—A newcomer to Luton, having been signed from Motherwell in May 1965. He was recommended to us by our Scottish Representative who forecasts a bright future for him in English Football. Regular First Team man this Season and always likely to snatch a goal as he has scored several this Season. **JOHN O'ROURKE (Centre Forward)**—Was previously with Arsenal and Chelsea from whom we signed him on a free transfer in December 1963. He immediately made his mark at Luton and scored 22 goals in 23 League appearances for us. He has also played for London School Boys and the England Youth Team. Regular First Team man. Very dangerous near goal as his 14 goals this season prove; **DAVID PLEAT (Outside Right)**—Luton paid a big fee to Nottingham Forest at the beginning of the 1964/65 Season, and David has played regularly in the First Team ever since. He played for the England Youth Team alongside O'Rourke and Whittaker. Can be a speedy and direct type of Winger and is popular with the crowd; **TONY READ (Goalkeeper)**—Born at Haydock. His first club was Sheffield Wednesday, and in 1964 he left them to go to Peterborough for whom he also played at Centre Forward. Has been playing at Inside Forward very successfully and has scored 6 goals this Season; **JOHN REID (Inside Forward)**—Previously played for Bradford and Northampton to whom we made a substantial transfer fee in November 1963. He has settled down well at Luton. He is a tireless and energetic worker. Scored 2 goals this Season; **COLIN TINSLEY (Goalkeeper)**—Born at Middlesbrough, his first club being Grimsby Town, then on to Exeter City before joining Luton in August 1963. He made regular appearances in the First Team last Season, and established himself as first choice; **RAY WHITTAKER (Outside Left)**—A Londoner from Bow, his only other club being the Arsenal. He gained England Youth International honours with John O'Rourke in 1962 and 1963, and when we were in need of a left wing, he was persuaded to join us in March 1964. He went straight into the First Team and held his place for the remainder of the Season. A regular First Team man this Season. Very dangerous near goal. 9 goals to his credit this Season.

Comparison of Southern League Premier Division Attendances of Corby Town matches this Season 1965-66.

	AWAY	HOME
KINGS LYNN	1,996	
YEovil		676
WELLINGTON		1,135
CAMBRIDGE UTD.	2,800	
BEDFORD TOWN	2,835	
CAMBRIDGE UTD.		1,542
CAMBRIDGE CITY		1,304
YEovil	2,493	
NUNEATON	2,069	
ROMFORD		1,032
POOLE TOWN	1,034	
DARTFORD		1,251
WORCESTER CITY	3,652	
HEREFORD UTD.	3,530	
CHEL TENHAM		1,217
WIMBLEDON		1,152
TOTALS	20,419	9,309
AVERAGE	2,552	1,163



CORBY TOWN FOOTBALL CLUB, TEAM THAT DEFEATED BURTON ALBION 6-3 IN 1st ROUND PROPER OF F.A. CUP, NOVEMBER 13th 1965

Back Row, Standing: David Yates, Trainer Willie Armour Alex McBain Alan Alexander Bob Riley Tony Needham Dave Pollard Tommy Haddon, Manager Seated: John McNamee Jonny Haasz Alex Stenhouse Capt. Maurice Goodall Alex Garden George Jagger

WHAT THE HEADLINES SAY

"Cup-chasing Corby whip Albion"—*Pink Un Headline*
 "Cheekiest Goal ever seals fate of Albion in Cup thriller"—*Sunday Mirror*
 "Corby turn on the pressure in a thriller of a match"—*Sunday Express*
 "Corby score six—and make club history by reaching second round for first time ever"—*The Sunday Times*
 "Smashing Corby—you won a thrilling game"—*The People*
 "This was a credit to Non League Football. Nine goals, a hatful of thrills and incidents galore made this F.A. Cup tie one of excitement and tension right to the very last kick"—*Northamptonshire Evening Telegraph*
 "Two great teams give a classic Cup display"—*Burton on Trent Report*
 "Those magnificent Steelmen. Ninety minutes of thrilling end to end soccer"—*Corby Leader*
 "Corby Town enter Round 2 for first time in their History"—*Birmingham Post*

FOR THE RECORD BOOK

Our biggest Home Win in F.A. Cup was against Wellingborough Town in 3rd Qualifying round in Season 1954-55 when we won 8-0, and our heaviest defeat at home was in 4th Qualifying round against Gravesend in Season 1949-50 when we lost 1-6, at that time Gravesend were in Southern League which they still are, and we were then in United Counties League. Now we are in Premier Division of Southern League and Gravesend are in Division One, so we have progressed a long way since 1950 using this as a fair comparison.

HOSPITAL BROADCAST

All our first team matches are broadcast to Hospitals in Kettering, today we have been pleased to assist in arrangements for today's game to be broadcast to all Luton Hospitals as well as Kettering Hospitals.

JACKPOT FREE COMPETITION

Re Draw made on Saturday, 20th November 1965, by 4 spectators at match, No. 13949 held by Mr. John Wiseman, 37 Occupation Road, Corby, who has therefore won Free Motor Car.

ITEMS OF INTEREST

Money in the Cup? Not yet for us. We have received less than £400 nett from F.A. Cup matches this Season as our share of two gates. Romford who are also in Premier Division of Southern League and who were defeated by Luton Town in 1st Round of F.A. Cup have received £1,900 nett from F.A. Cup this Season, its this sort of money that we want particularly when our average Southern League gate is less than half the average gate for Premier Division clubs.

As we were compelled to change from our usual colours today we are most grateful for the loan of Claret and Amber Shirts and Black Knickers from Stewarts and Lloyds Amateurs.

THE NORTHAMPTONSHIRE LICENSED TRADES ASSOCIATION CORBY DIV. N.L.T.A. PLAYER OF THE YEAR

For the first time in the history of the football club; thanks to the generous offer of the Local Division of N.L.T.A. there will be a trophy presented to the Player of the Year, the lucky player will also have a replica of the trophy for his achievement.

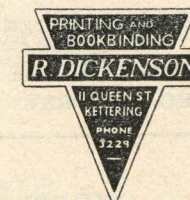
The Player will be selected by YOU the Supporters. Towards the end of the season. Ballot Papers will appear in the Programme, then Ladies and Gentlemen it's up to you who it will be. To the Local Division of N.L.T.A. Gentlemen 'Many Thanks'.

L. HALLATT

COAL, COKE AND SMOKELESS FUEL

9 FERMYN PLACE & 14 ROSEDALE
CORBY

Phone 2860 and 2460



First KICK OFF by visiting YOUR

MAIN



DEALER

E. WARD (CORBY) Ltd.,



SOUTHERN BY PASS
CORBY

2332

2333



AT HOME, OR AWAY— Be on the ball
with the

Please send me booklet

Royal Marines

"MEN OF ACTION"

without obligation

The Sea Soldiers of the Royal Navy
and Britains Commando's

Name.....

Apply: Lieut. G. A. Davies, R.M.,

Address.....

R.N. & R.M. Careers Officer,
55, Bridge Street, Northampton
Tel : 37518

Date of Birth.....

CORBY TOWN FOOTBALL CLUB LTD.

HON. PRESIDENT : W. T. MONTGOMERY, J.P. **HON. VICE PRES. :** C. McCARTNEY
CHAIRMAN : F. C. DEELEY **JOINT VICE CHAIRMEN :** JIM KERR & A. LOGAN
DIRECTORS : JOHN KERR. H. GUY, H. STIMSON. L. HALLATT,
N. CAMERON, H. COOKE.

BERT SMITH

BUILDER

BATHROOM CONVERSIONS

*All kinds of Repairs and Alterations
Slating, Roof Tiling, Glazed Tiling*

*Ranges and Fireplaces of all types Supplied
and Fixed Marley Tile Floors Laid*

— ESTIMATES FREE —

56 OAKLEY ROAD, CORBY Phone 2392

Good Printing to suit every need

General Printing

and all Office Stationery

V. B. PIKE

4 CANON STREET KETTERING

Phone 3578

OBITUARY IN MEMORY OF WILF WISEMAN.

For many years players of Corby Town have struggled on the field, officials have striven in the Board room to reach this stage of the F.A. Cup and this afternoon when the position has at last been attained, it is unfortunately tinged with a great deal of sadness, for he who laboured for 21 years with this end in view, did not live to see the attainment of his efforts.

In the programme some weeks ago intimating the resignation of Wilf Wiseman as match secretary owing to a breakdown in his health I closed with these words, "Haste ye back."

Alas to the sorrow of all who knew him and respected him Wilf will not be back, as he passed away suddenly on Thursday, 18th November; the sympathy of all connected with Corby Town Football Club go out to his sorrowing wife and family, the loss to the Club and Football generally is great, *but there loss is beyond measure.*

Only those intimately connected with him know what Corby Town Football Club owe to his services, given unstintingly without regard to his own person or health during 21 years.

After a year on the Committee of Stewarts and Lloyds Football Club he was appointed Match Secretary in 1943, and continued to hold this office when the Club became Corby Town Football Club, he was also one of the founder Directors of the Corby Town Club.

The Administrative work in connection with the changeover was carried out by Wilf in his usual efficient and inimitable manner. Not only did Wilf Wiseman build up a good relationship with all connected with Football in the Midlands and beyond, but it should be placed on record that the relationship he built up with the owners of Occupation Road ground, Messrs. Stewarts and Lloyds Ltd., was mainly responsible for the firm agreeing to install the Floodlight system, *they will remain for all time a fitting Memorial to his memory.*

The writer of this tribute was Chairman of the Club for 10 years while Wilf held the office of Secretary and can speak from personal knowledge of his meticulous handling of all the Club affairs. I accompanied him on many journeys, on Club business, and know in what regard he was held in all Football deliberations, it is true to say that the high esteem in which Corby Town Football Club is held in football circles can be attributed to the high standard set and maintained by the late Wilf Wiseman.

One could say a great deal more to eulogize the memory of Wilf Wiseman, but on my own behalf, on behalf of the present Chairman, Directors, Officials and all connected with Corby Town Football Club, I can only say it was a privilege to know and work with him, and the best way to remember him is to ensure that the Club he had so much at heart continues along the lines of progress he laboured so hard to achieve.

WM MONTGOMERY *Hon. President,* Corby Town Football Club.

ROOTES GROUP.

'Phone 2628

FOREST GATE SERVICE STATION

Sales - Service - Repairs

CRYPTON TUNING SPECIALISTS

COMPANY SEC. : D. GREEN, 1a School Hill, Irchester, Northants. Phone : Rushden 3414
ACTING CLUB SECRETARY : JIM KERR, 1 Eskdale Ave., Corby. Phone : Corby 2087
MANAGER-COACH : T. HADDEN, 5 Humber Walk, Corby. Phone : Corby 2006.
TREASURER : W. CRANSTON, Rowlatt Road, Corby.
JOINT PROGRAMME EDITORS : JIM KERR, 1 Eskdale Avenue, Corby Phone : 2087
and F. C. DEELEY.

FOR ALL SPORTS GEAR
TOMMY ALEXANDER

Scout and Guide Wear

**4 MARKET SQUARE, 70 GEORGE STREET,
182 STUDFALL AVENUE, CORBY Telephone 3005**

The Teams.

CORBY TOWN for today (Claret & Amber Shirts, Black Shorts)

(1) ALEXANDER

(2) McBAIN or WHITTAKER

(3) POLLARD

(4) RILEY

(5) NEEDHAM

(6) ARMOUR

(7) HAAZS

(8) STENHOUSE

(9) GOODALL

(10) GARDEN

(11) JAGGER

(11) WHITTAKER (10) GIBSON

(9) O'ROURKE

(8) READ

(7) HARBER

(6) MOORE

(5) WOOD

(4) REID

(3) EDWARDS

(2) HUDSON

(1) TINSLEY

LUTON TOWN (Red Shirts, White Shorts),

Referee: Mr. R. V. SPITTLE (Gt. Yarmouth).

Linesmen: (Red Flag)—Mr. E. J. Bradley (Lincoln).

(Yellow Flag)—Mr. J. Jackson (Ramsey).

NEXT MATCH ON THIS GROUND

SATURDAY, 11th DECEMBER

K.O. 2-30 p.m.

United Counties League.

CORBY RES. v. ROTHWELL

**GRAMOPHONE RECORDS PLAYED HERE TODAY HAVE BEEN VERY KINDLY SUPPLIED BY
RECORD RENDEZVOUS—MARKET SQUARE, CORBY.**

W. ALLAN (BAKERS) LTD.

BAKERS & CONFECTIONERS

GEORGE STREET, CORBY

Milanda "Scotch" Bread Cheese Loaves

Wedding & Birthday Cakes our speciality

**91 Occupation Rd. 174 Studfall Av Burghley Dri. 69 Greenhill Rise 177 Farmstead Rd
Phones: 2693 3040 3784**

QUALITY FARE

BEER, WINES, SPIRITS & GROCERIES

101 ROCKINGHAM ROAD. Phone : Corby 3747

186 STUDDALL AVENUE. " " 3033

48 BURGLEY DRIVE. " " 2884

Orders Delivered, Glasses loaned FREE for Parties & Weddings.

Score!!

By Purchasing your requirements of

Groceries

Provisions

Confectionery

Sundries

IRWIN T. DINES & Co.

WHOLESALE DISTRIBUTORS

12 Beatrice Road, KETTERING.

Phone 5357-8

TRADE ONLY

CASH and CARRY
and
Normal Delivery Service

from

WILSON'S

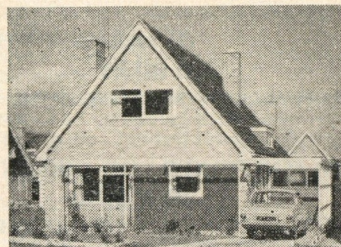
ARCHITECT DESIGNED HOMES

WILSON'S Construction and design is of the highest standard.

INVEST IN YOUR OWN HOME NOW

WILSON'S (Builders N'pton) LTD.

63 - 69 Sheep St. Northampton Tel. 35271 (6 lines)



SUPPORTERS CLUB NOTES

On behalf of Corby Town Supporters Club I extend to Luton Town supporters a very hearty welcome and I sincerely hope they enjoy their brief stay in Corby. I do hope their enjoyment will not be at the expense of Corby Town football club.

This is Luton Town's first visit to Occupation Road and it is our first time in the second round proper of the F.A. Cup.

This is also our first year in the Premier Division and to date we are showing up very well in this grade of football.

So with all these *firsts* to our credit this season let's hope that after today's result we will register another first by going through to the third round proper and get a chance of meeting a First Division club.

For the benefit of Luton Town supporters and strangers to the ground there are refreshment kiosks at three vantage points of the ground. Also we have a club for other than light refreshments at the main entrance to the popular side of the ground.

For all concerned let us hope we see a really good game fought in traditional cup style.

So to both sets of supporters I say give your respective teams your vocal support loud and clear, and may the best team win.

Of late we have learned with deep regret of the death of Wilf Wiseman who was secretary of Corby Town Football Club. He had such a happy and amiable personality which endeared him to all who came into contact with him. His wishes and efforts to promote a better class of football in Corby are well known. Also his wishes for a prosperous Corby Town Supporters club were really appreciated by the committee and fans alike.

As a personality in football circles he will indeed be missed and let us hope all the work he has put into Corby Town Football Club will bear fruit in the future. So to his wife and family may I on behalf of Corby Town Supporters club extend to her our sincerest condolences with regard to her sad bereavement.

JOHN C. MURRAY,

Chairman, Corby Town Supporters Club

Introducing the 'Steelmen'—Corby Town F.C.

ALAN ALEXANDER (Goalkeeper)—Born nr. Glasgow and joined Corby Town from Bradford Park Avenue on a free transfer in July 1962, has since made over 100 appearances for the Steelmen. Age 23 years and a great favourite with local fans; ALAN MCBAIN (Full Back)—Age 24 years, 5' 8". Started his career with Swansea and later transferred to Carlisle, after 3 years at Carlisle was transferred to Luton for a four figure fee, remained at Luton 2 Seasons, made 40 first team appearances with Luton last Season, joined Steelmen in August this year, regular First Team player; DAVE POLLARD (Left Full Back)—Age 26 years, signed from Hereford Utd. 2 Seasons ago, great hearted player, lives in Leicester; ROBERT RILEY (Wing Half)—Age 23 years, 5' 8" plays either wing half, started his career with Leicester his home town. After 5 Seasons transferred to Luton Town from whom we signed him in July this year, regular First Team player this season and has scored 3 important goals for us; TONY NEEDHAM (Centre Half)—Age 25 years, 5' 10". Utility defender signed from Scunthorpe his only other club in July this year. A popular successful player with the Steelmen, regular First Team player; D. WHITTAKER (Full Back)—An Eire International Full back played for Chelsea, Peterborough, Q.P.R., came to Corby in exchange for R. Laverick (King's Lynn) in his second Season for the club, a great club man; GEORGE ARMOUR (Wing Half)—A local boy who signed for Chelsea as a youth, later to Kettering as Wing Half back. Transferred from Kettering to Corby beginning of last Season. ALEX GARDEN (Inside Forward)—Signed from Ashford towards end of last Season, Inside Forward a human dynamo, formerly played for Plymouth. Born Aberdeen. Age 23 years; M. GOODALL (Centre Forward)—Came up through our Youth Team playing many positions and now hitting the headlines as a Centre, attracting number of League clubs. 21 years old. Been with club 5 years; JOHN HAASZ (Inside Forward)—Age 26 years, 5' 9", an inside forward, has played alongside the great Puskas, was born in Hungary. Started his football in this country with Swansea for one Season, and moved on to Workington for two Seasons, then on to Cambridge Utd. for the past two Seasons, scoring 80 goals and missing two months of last Season through injury. Married, lives in Corby; CHARLIE MCGLINCHY (Forward)—Age 21 years, 5' 10", a centre-forward or either wing. Started his career with Nottingham Forest, after two Seasons went to Ramsgate for past two Seasons, scoring 28 goals. Was on Ramsgate's transfer list for six months and after an appeal to F.A. received a "Free" and we snapped him up against great opposition. Born Coatbridge. Single, lives in Corby; J. STANLEY (Inside Forward)—Another of our youths also 5 years with the club as Inside Forward, attracted Leicester who took him on trial. Since going on shift work has lost the edge, but is still only 21 and time to hit the headlines; G. ANDERSON (Forward)—Also signed as a youth having many county youth caps, only 20 years is a versatile forward and plays a useful game at Full back. 5 years with club; J. MCNAMEE (Forward)—Born Watford, played for Raith Rovers for 2 Seasons, as inside or wing forward, now staying in the district as agent for cigarette firm, is taking time to come back after missing last year as a footballer. 24 years. Signed at commencement of present Season; ALEX STENHOUSE (Forward)—Captain of Team signed from Bedford Town 2½ Seasons ago. Age 29 years, previously with Southend Utd., regular 1st Team player, knows how to make an opening, terrific right foot, Penalty ace. Lives in Corby. Painter by trade; GEORGE JAGGER (Outside Left)—Born Barnsley and signed from that club 2 Seasons ago, always played wing half previous to signing for Corby, has made the outside left position his own. George always keeps well in the game, an excellent club man. Age 24 years. Lives and works in Corby.

YOUR REFEREE TODAY—MR. REX V. SPITTLE, Great Yarmouth, a Schoolmaster, also has business interest in letting holiday bungalows, this will be his 4th Season as a Football League referee, was on the line in Lisbon, Portugal for match (Benfica v. Dukla (Prague)).

YOUR LINESMEN TODAY—With Red Flag, MR. E. J. BRADLEY, Lincoln, with Yellow Flag—MR. JOHN JACKSON, Romsey.

GOOD WISHES FOR TODAY

Mr. Vic Grantham, Chairman of Burton Albion has sent his club's and his own good wishes to our Chairman Mr. F. C. Deeley, with the sincere wish that Corby Town will win today's match against Luton Town. Thanks Vic, and we all know you mean it.

HOW WE GOT TO THE 2nd ROUND FOR FIRST TIME

Exempt 1st, 2nd, 3rd Qualifying Rounds due to our excellent Cup record last 3 Seasons.
4th Qualifying Round

Corby Town 2, Kings Lynn 1 Goals Goodall, Garden. 1st Round Proper Corby Town 6,
Burton Albion 3 Goals Goodall, 2, Garden 2, Haasz, Riley. Attendance 3,782.

GIFT OF FOOTBALLS TO YOUR CLUB THIS SEASON

No. 1, L. Hallatt—No. 2, H. Cooke—No. 3, Supporters Club—No. 4, A. A. Broeden—No. 5,
Tommy Alexander—No. 6, Today's Match—F. C. Deeley.

Any offer from any individual or organisation for Ball No. 7
contact Tommy Hadden, Manager.



Burton Albion goalkeeper Les Green makes a desperate effort to reach this shot from Maurice Goodall but he failed and the Steelmen were one up in F.A. Cup tie and on their way to 2nd Round for first time in their history. (Photo by courtesy of Evening Telegraph).

FROM THE BOARDROOM.



As Chairman of Corby Town Football Club it is my pleasure to welcome the Directors and officials of Luton Town Football Club, on behalf of our own Directors and officials; we also have a number of other notable guests with us today, Mr. J. Kane, Chairman Corby Urban District Council, Mr. R. F. Brook-Grundy, General Manager Corby Development Corporation, Mr. J. M. L. Keir, General Manager Administration, Stewarts and Lloyds Ltd., and Mr. F. C. A. Dunmore, President Northants Football Association.

We have over 260 workers helping our club in various ways, Competition agents, Gatekeepers, Programme sellers, Tea kiosks attendants, Supporters club workers and many others, to each and everyone our thanks for all your help and assistance. We are the only New Town Football Club in Great Britain to have ever reached the 2nd Round Proper of the Football Association Challenge Cup.

Hope, like the gleaming taper's light, adorns and cheers our way we trust to a win in today's game against F.A. Cup finalists of 1958, Luton Town.

F. C. DEELEY,
Chairman,
C.T.F.C.

If today's match is drawn replay will be at Luton, Tuesday next, December 7th. Kick-off 7-15 p.m.

A Welcome by—

EILEEN & NOEL NYILASSY

1 Pint of Best Bitter

1 Bacon & Mushroom Roll

Plus Roaring Log Fires—

only 2/9

(BAR PRICE)

Half-Way House

SOUTH LUFFENHAM

(Uppingham-Stamford Road, Rutland)

Phone : North Luffenham 366.

BEST QUALITY MILK

Pasturised, Tuberculin Tested,

Channel Island quality

EGGS — DOUBLE CREAM

ORANGE DRINK

J. M. WOOLSTON LTD.

DARLEY DALE ROAD DAIRY, CORBY

Phone: Rockingham 212

NEW CUSTOMERS WELCOME

Premier Division (Up to and including
November 30th, 1965)

				Goals						
	P	W	D	L	F	A	P			
Wimbledon	17	8	5	4	29	17	21			
Weymouth	15	7	6	2	22	14	20			
Worcester C.	17	9	2	6	36	26	20			
Hereford U.	16	6	7	3	27	20	19			
Bedford T.	15	8	3	4	36	23	19			
Corby T.	16	7	4	5	26	21	18			
Romford	15	8	2	5	30	26	18			
Yeovil T.	16	5	4	3	27	19	17			
Chelmsford C.	16	6	5	5	24	22	17			
Cambridge U.	16	6	3	7	20	24	15			
Margate	17	5	5	7	28	40	15			
Tonbridge	15	6	3	6	29	27	15			
Folkstone T.	12	4	5	3	20	17	13			
Cambridge C.	13	5	3	5	16	17	13			
Cheltenham T.	15	4	5	6	19	29	13			
King's Lynn	15	5	2	8	19	36	12			
Dartford	15	4	3	8	18	21	11			
Nuneaton Boro.	15	5	1	9	19	26	11			
Rugby T.	15	3	4	8	20	35	10			
Guildford C.	12	2	4	6	13	23	8			
Poole T.	15	3	2	10	16	33	8			

Midland Floodlit Cup
Up to and including Wednesday
December 1st, 1965

	P	W	D	L	F	A	P
Corby Town	6	5	0	1	19	8	10
Worcester City	4	3	0	1	12	9	6
Wellington	5	2	2	1	12	10	6
Burton Albion	3	2	0	1	7	6	4
Cambridge Utd.	3	1	1	1	5	5	3
Kettering Town	2	1	0	1	3	2	2
Wisbech	4	1	0	3	7	15	2
Lockheed	5	0	0	5	5	17	0

NEXT WEEK'S MATCHES

Monday Lockheed v. Corby Town
Monday Cambridge Utd. v. Wisbech
Wednesday Burton Albion v. Cambridge Utd.

CORBY CLEANERS

13 HIGH STREET, 192 STUDFALL AV., & 183 FARMSTEAD ROAD
CORBY

WE SCORE EVERY TIME

Quality — Quick Service — Reasonable Prices

Collection and Delivery

Phone 3215 — For our van to call at your door

RESULTS APPEARANCES, Etc.—SEASON 1965-66.

FIRST TEAM SOUTHERN LEAGUE (PREMIER DIV.)

Aug.			
21	Kings Lynn	A	2-3
23			
24	Yeovil Town	H	4-1
26	Wellington Town	H	2-1
30	Cambridge U. (SLC)	A	1-2
31			
Sept.			
4	Bedford Town	A	1-2
7	Cambridge U. (SLC)	H	0-1
8			
11	Cambridge City	H	2-1
15	Yeovil Town	A	1-1
18	Nuneaton Bor.	A	4-3
21	Worcs. City (MFC)	H	2-3
25	Romford	H	0-0
26	Lockheed Leam'ton (MFC)	H	2-1
Oct.			
2	Poole Town	A	2-0
5	Wellington T. (MFC)	H	3-1
9	Dartford	H	3-1
16	Kings Lynn (F.A. Cup)	H	2-1
18	Chelmsford C. (CIC)	A	3-3
23	Cambridge Utd.	H	1-1
25	Worcester City	A	1-3
30	Hereford Utd.	A	2-1
Nov.			
2	Kettering T. (MFC)	H	2-1
6	Cheltenham T.	H	0-0
13	Burton Alb.	H	6-3
16	Wisbach T. (MFC)	H	7-1
20	Wimbledon	H	0-1
24	Wisbach T. (MFC)	A	3-1
27	Margate	A	1-2
Dec.			
4	F.A. Cup 2nd Round	H	
6	Lockheed Leam'ton (MFC)	A	
11	Weymouth	A	
18	Folkestone	H	
25			
27	Rugby Town	A	
28	Rugby Town	H	
Jan.			
1	Dartford	A	
8	Hereford Utd.	H	
15	Cambridge Utd.	A	
22	Bedford Town	H	
24	Camb. Utd. (MFC)	A	
29	Kings Lynn	H	
Feb.			
5	Wellington Town	A	
12	Chelmsford City	A	
15	Burton Alb. (MFC)	H	
19	Worcester City	H	
21	Kettering T. (MFC)	A	
26	Cambridge City	A	
28	Worcester C. (MFC)	A	
Mar.			
5	Chelmsford City	H	
7	Wellington T. (MFC)	A	
12	Nuneaton Bor.	H	
19	Romford	A	
26	Poole Town	H	
April			
2	Cheltenham Tn.	A	
4			
8	Tonbridge	A	
9	Weymouth	H	
12	Tonbridge	H	
14			
16	Wimbledon	A	
19	Camb. Utd. (MFC)	H	
23	Margate	H	
27			
30	Guildford City	A	
May			
7	Folkestone	A	

Guildford City H to be arranged

RESERVES UNITED COUNTIES LEAGUE (DIVISION 1)

Aug.			
21	Holbeach Utd.	H	0-2
23	Kettering Res.	A	6-1
31	Boston Utd.	H	1-1
Sept.			
4	Wisbech Res.	H	1-2
8	Timken Athletic	A	3-5
11	Wolverton	A	0-0
18	Kettering Res.	H	1-2
25	Boston Utd.	A	0-4
Oct.			
2	Peterborough Ath.	H	2-3
9	Potton Utd.	A	0-1
16		H	
23	S. & L. Corby	A	0-1
30	Bourne Town	H	2-4
Nov.			
6	Desborough Tn.	A	1-7
13	Bitchley	A	0-3
20	Eynesbury Rov.	A	2-3
	(K.O. Cup)		
27	Bitchley	H	0-0
Dec.			
4	Holbeach Utd.	A	
11	Rothwell	H	
18	Wisbech	A	
Jan.			
1	Desboro Town	H	
8	Biggleswade Tn.	A	
15	Wolverton	H	
22	Bourne Town	A	
29		A	
Feb.			
5	Rushden Town	H	
19	Peterboro Ath.	A	
26	Biggleswade	H	
Mar.			
12	Eynesbury Rov.	A	
19	Timken Ath.	H	
26	Rilushden Town	A	
April			
2	Rothwell Town	H	
4	S. & L. Corby	H	
14	Northampton "A"	H	
16	Wisbech Res.	H	
27	Wellingboro Tn.	H	
30	Rothwell Tn.	H	

MFC—Midland Floodlit Cup

CIC—Chelmsford Invitation Cup

KOC—UCL Knock-Out Cup

GOAL SCORERS (to date)

FIRST TEAM—		
McGLINCHEY	..	9
GARDEN	..	13
GOODALL	..	12
JAGGER	..	2
HAASZ	..	3
REILEY	..	3
ARMOUR	..	3
MCBAIN	..	1
STENHOUSE	..	1
NEDHAM	..	4
McNAME	..	4

SECOND TEAM— (to date)

McNAME	..	5
STANLEY	..	4
CHILDS	..	2
MURKITT	..	1
GILMONT	..	1
OWN GOAL	..	1
SIMMONS	..	1
McLINCIE	..	1