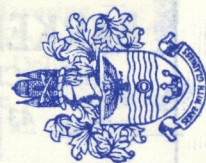
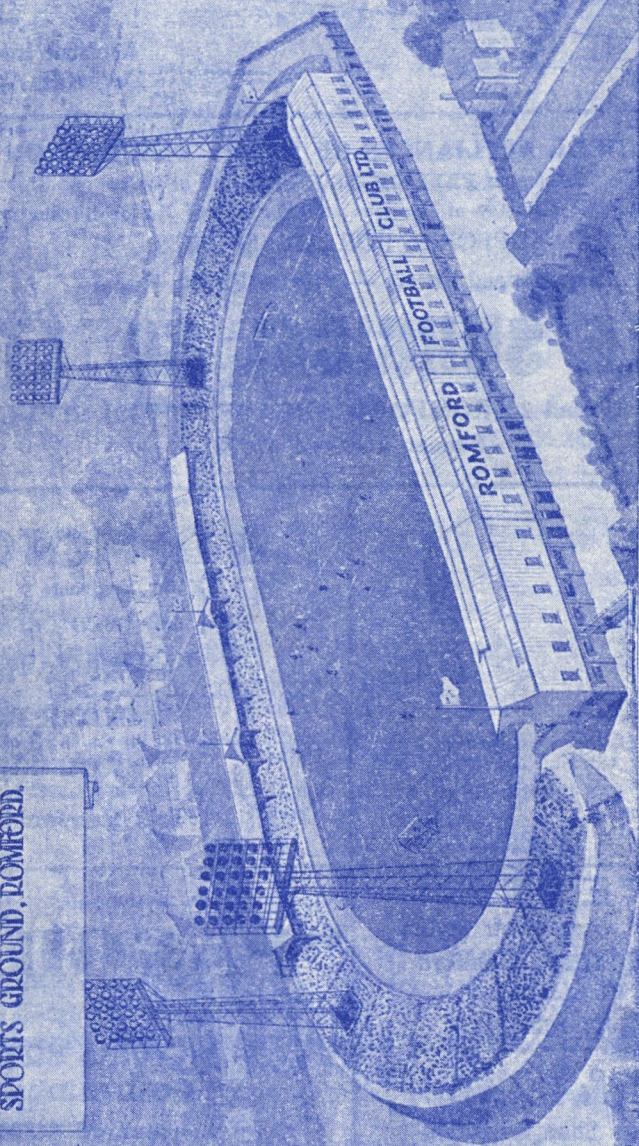


BROOKLANDS  
SPORTS GROUND, ROMFORD.



Saturday, 13th November, 1965  
F.A. Challenge Cup — 1st Round Proper

# ROMFORD v. LUTON TOWN

Kick-Off 3 p.m.

OFFICIAL D  
PROGRAMME **6**



Everything for the  
MUSICIAN

# WELLS

Telephone:  
ROMFORD 64583

ROMFORD ARCADE, SOUTH ST.  
(Alongside Police Station)  
and HIGH STREET, ROMFORD

## Music Stores

Records  
Musical Instruments  
TV - Domestic Appliances

### SURGICAL APPLIANCES OF EVERY DESCRIPTION

Catalogues **FREE ON REQUEST**. Call or write  
Contractors to Ministry of Pensions and Ministry of National Insurance  
**SUPPORTS FOR ALL SPORTS**

Experienced Fitters — Private Fitting Room

## EAGLE SURGICAL CO. LTD.

17, 18, 19 and 20 ROMFORD ARCADE, SOUTH STREET  
Phone: Romford 42476

### E. & D. MOTORS

Motor Engineers  
NEW and USED CARS  
INSURANCE REPAIRS



80 CEDAR ROAD  
ROMFORD

Tel.: Romford 48199

### BRETTS

Ladies and Gents Hair Stylist  
217 North Street, Romford  
(Near Parkside Hotel)  
Tel.: Romford 61422

### BARKER & DOWSETT

High Class Shoe Repairers  
43 London Road  
Romford

Wine and Dine at the . . .

### "PAGODA"

Chinese Restaurant

64 VICTORIA ROAD  
ROMFORD

Tel.: Romford 44303

With finest exotic dishes and atmosphere  
with soft lights and sweet music

## THE ROMFORD FOOTBALL CLUB LTD.

Formed 1876 . Reformed 1929 . Incorporated 1937

Members of Football Association

Southern League, Eastern Professional Floodlight Competition,  
Mercia Youth League and Affiliated E.C.F.A.

Club Colours: Royal Blue and Old Gold

### Directors:

J. W. PARRISH (Chairman)	S. C. PARRISH, J.P.
H. F. KNIGHTS (Vice-Chairman)	J. R. POEL
F. H. ADAMS	P. G. R. WALLACE
G. ALEXANDER	G. L. WELYON
V. E. H. NICHOLLS	
C. T. OLLEY	

### Secretary:

HERBERT W. MUSKETT

110 Hyland Way, Hornchurch. Tel.: Hornchurch 47924

### Manager:

H. CLARKE

Ground Telephone: Romford 45534

### Medical Officer:

Dr. B. FITZGERALD

### Football Secretary:

JOHN HALEY

## CLUB COMMENT

Good Afternoon Ladies and Gentlemen,

This afternoon, we are pleased to extend a very cordial welcome to the Directors, Officials, Players and Supporters of the Luton Town Football Club.

Luton visit Brooklands, in the hope that they can continue their recent run of Division Four success into the F.A. Cup Competition. Since reaching the F.A. Cup Final in 1959, Luton have had a lean time. They were relegated from the First Division to Division Two the following season.

In 1963 Luton were relegated to Division Three and this season are playing in the Fourth Division. However, recent results indicate that the Hatters are on the way back to the success road.

We wish them every success in their bid for promotion, but naturally hope that our boys will end Luton's F.A. Cup hopes today.

### Today's Guests and Visitors.

This afternoon we are also very pleased to have as guests of the Club, Councillor and Mrs. F. S. Lester, the Deputy Mayor and Mayoress of Luton, Councillor and Mrs. S. Legg, the Mayor and Mayoress of Havering, the Superintendent of Romford Police Station, Superintendent J. Crisp, and Mr. W. Dellow Secretary of the Southern League, together with Mrs. Dellow.

Councillors and Aldermen of the Borough of Havering are also guests of the Club on this occasion. We hope that they will all enjoy an excellent afternoon's entertainment.

Continued on page 11



# ROMFORD F.C. — SEASON 1965-66

## SOUTHERN LEAGUE (PREMIER DIVISION)

(Subject to alteration)

1965	Opponents	Grnd	For	Goals Agst	1966	Opponents	Grnd	For	Goals Agst
Aug. 7*	Charlton Res. (F)	Home	5	— 1	Jan. 1	Folkestone T.	...	Away	.....
14*	Chelsea Res. (F)	Home	1	— 5	8	Cheltenham T.	...	Home	.....
16*	Barnsley (F)	Home	2	— 3	15	Hereford U.	...	Away	.....
21	Wellington T.	...	Away	4 — 5	22	Wimbledon	...	Home	.....
25	Rugby T.	...	Away	1 — 2	29	Wellington T.	...	Home	.....
28	Worcester C.	...	Home	2 — 0	Feb. 5	Worcester C.	...	Away	.....
31	Gravesend (S.L.C.)	Away	4	— 2	12	Kings Lynn	...	Home	.....
Sept. 4	King's Lynn	...	Away	2 — 2	19	Cambridge C.	...	Home	.....
6	Gravesend (S.L.C.)	Home	7	— 0	21	Cambridge U.	...	Away	.....
11	Nuneaton B.	...	Home	1 — 2	26	Nuneaton B.	...	Away	.....
15	Rugby T.	...	Home	2 — 0	Mar. 5	...	...	Away	.....
18	Dartford	...	Away	2 — 1	12	Dartford	...	Home	.....
25	Corby T.	...	Away	0 — 0	15	Cambridge C.	...	Away	.....
30	Hornchurch (F)	...	Away	7 — 3	19	Corby T.	...	Home	.....
Oct. 2	Yeovil T.	...	Home	1 — 5	26	Yeovil T.	...	Away	.....
9	Folkestone T.	...	Home	2 — 1	Apr. 2	Bedford T.	...	Away	.....
16	Chelmsford (FAC)	Home	2	— 1	8	Chelmsford C.	...	Home	.....
18	Cambridge U (SLC)	Home	0	— 2	9	Poole T.	...	Home	.....
23	Hereford U.	...	Home	4 — 1	11	Chelmsford C.	...	Away	.....
25	Brentwood (E.P.C)	Home	1	— 1	16	Margate	...	Away	.....
30	Cheltenham T.	...	Away	2 — 1	23	Guildford C.	...	Home	.....
Nov. 6	Bedford T.	...	Home	0 — 1	30	Weymouth	...	Away	.....
13	Wimbledon	...	Away	.....	May 7	...	...	...	.....
20	Margate	...	Home	.....					
27	Guildford C.	...	Away	.....					
Dec. 4	Weymouth	...	Home	.....					
11	Poole T.	...	Away	.....					
18	Cambridge U.	...	Home	.....					
27	Tonbridge	...	Home	.....					
28	Tonbridge	...	Away	.....					

\* Public Practice Matches

THIS SPACE RESERVED FOR  
AMBERLEY AUTOS LTD.

751/755 EASTERN AVENUE, NEWBURY PARK, ILFORD, ESSEX

Phone: Romford 47989



**I. & T. CUMBERS**

BUILDERS and CONTRACTORS

53, COMO STREET,  
ROMFORD, ESSEX

## LUTON TOWN FOOTBALL CLUB—Pen Portraits

**COLIN TINSLEY** (Goalkeeper). Born at Middlesborough, his first Club being Grimsby Town, then on to Exeter City before joining Luton in August, 1963. He made regular appearances in the First Team last season, and established himself as first choice.

**BOBBY THOMSON** (Full Back). Born at Menstrie in Scotland. He first came into prominence with Partick Thistle, and was later transferred to Liverpool for a big fee. Luton secured his services from the latter Club on the 2nd August, 1965.

**FREDDY JARDINE** (Full Back). Born in Edinburgh. Played for Dundee for two seasons before coming to Luton at the end of season 1960-61. He came as an outside left, but was successfully converted to a full back, where he figured last season in 32 First Team games.

**JOHN REID** (Inside Forward). Previously played for Bradford and Northampton to whom we made a substantial transfer fee in November 1963. He has settled down well at Luton and is a tireless and energetic worker.

**MATT WOODS** (Centre Half). A native of Skelmersdale, Lancashire. His first Club was Blackburn Rovers for whom he made 126 out of a possible 128 appearances, including a Cup Final, before going to Australia in 1963. Immediately upon his return to this country, Luton secured his services.

**JOHN MOORE** (Wing Half). A newcomer to Luton, having been signed from Motherwell in May, 1965. He was recommended to us by our Scottish Representative who forecasts a bright future for him in English Football.

**JIMMY GIBSON** (Wing Half). He was born at Belfast, his first English Club being Newcastle United. Then after a spell with Cambridge United, he transferred to Luton on February 2nd, 1965, when he won and retained a First Team place for the remainder of the season.

**TONY READ** (Goalkeeper). Born at Haydock. His first Club was Sheffield Wednesday, and in 1964 he left them to go to Peterborough for whom he also played at Centre Forward. He was transferred to Luton in March, 1965 but unfortunately, owing to a broken bone in his foot, he was unable to play for us last season. With his adaptability on the field, it remains to be seen which will prove to be his better position.

**JOHN O'ROURKE** (Centre Forward). Was previously with The Arsenal and Chelsea, from whom we signed him on a free transfer in December 1963. He immediately made his mark at Luton and scored 22 goals in 23 League appearances for us. He has also played for London School Boys and England Youth Team. Last season he was dogged by injuries.

**BARRY FRY** (Inside Forward). Was signed during the summer on a two months trial. Born in Bedford he represented England, both as a School-boy and a Youth International. Previous Clubs were Manchester United and Bolton Wanderers.

**RAY WHITTAKER** (Outside Left). A Londoner from Bow, his only other Club being The Arsenal. He gained England Youth International Honours with John O'Rourke in 1962 and 1963, and when we were in need of a left wing he was persuaded to join us, in March 1964. He went straight into the First Team and held his place for the remainder of the season.





JOHN MOORE



TONY READ



JOHN O'ROURKE

RAY WHITTAKER



#### MATCH FOOTBALLS

The following persons have donated a football to the Club this season:

- J. W. PARRISH, Esq.
- G. L. WELTON, Esq.
- C. R. MARYON, Esq.
- B. G. HUGGETT, Esq.
- W. MUSKETT, Esq.

Photos: Romford Times

## 100% VOLKSWAGEN

SALES and SERVICE . SPARES



Demonstrations of New and Used Cars and Vans without obligation

OPEN 7 DAYS A WEEK

**ABRIDGE ENGINEERING CO. LTD.**

ABRIDGE Theydon Bois 2077

### MANAGER'S NOTES

Good Afternoon Ladies and Gentlemen,

It is my privilege to welcome the Officials, Players and Supporters of Luton Town F.C. our Cup opponents for this afternoon.

They are at present well up with the leaders and look set for a quick return to Division Three. In this venture we wish them well.

There success this season is beginning to show in their gates and last Saturday saw them with the second best attendance in their division. This must be very gratifying. We are confident that today we will have our best gate this season. The interest the F.A. Cup commands is tremendous. It has been building up ever since the draw was made known. The Boro' know the task confronting them is a stiff one but they are anything but overawed. I am confident that we shall see a very good sporting match.

HARRY CLARKE.

### SUPERCINE LTD.

- ★ Specialists in 8mm Cine Cameras, projectors and accessories . . .
- ★ . . . and in still equipment, including wide range of 35mm single lens reflex cameras.
- ★ 8mm film library with more than 2,000 films for hire, sale and part exchange
- ★ Terms available; part exchange

**49 Victoria Road, Romford**

Tel.: Romford 63878

**316 Hoe Street, Walthamstow, E.17**

24 hour Breakdown Service . Complete Overhauls . Conversions . Servicing Panel Beating . Welding . Spraying

**George A. Forbes**

(Motor Engineer)

Office:

**23 Somerset Gardens, Hornchurch**

Tel.: Hornchurch 48625

Works:

**72b Brentwood Road, Romford**

Tel.: Romford 60410



Success to the 'Boro' . . .

## WARRINER

(Builders) LTD.

New Buildings . Alterations  
Decorations . Domestic Heating  
149 North Street, Romford  
Tel.: Romford 45851



54321. Go visit  
NEW

**Ron the Barber**

NOW

5b Park Lane, Horn.



**Civil Defence  
JOIN NOW!**

Enquiries:  
TOWN HALL  
ROMFORD

Tel.: Romford 46040

HAVERING RADIO TAXIS

A.B. CARS LTD.

**"Taxi in a flash"**

Romford 45950 - 48090

8a Eastern Road, Romford, Essex

**Romford Battery Co.**



1401  
Collier Row  
Lane  
Romford

Phone 41213

**SPRAWSONS**

Hardware, General Ironmongery, etc.  
Paints, Varnishes, etc.

37 Collier Row Lane, Romford

Tel.: Romford 49249

Removals and Storage

**GEO. COPSEY & Co. (1960) Ltd.**

168 Market Place, Romford

Tel.: Romford 40714

Tel.: Romford 42027

**H. B. & H. SECTIONAL BUILDINGS**

E. Hubber G. Butler

Portable Buildings of every Description  
Supplied . Fencing . Coloured Paving  
Garden Ornaments . Coal Bunkers  
2 Main Road, Romford, Essex

**Bourne Fibre Co. Ltd.**

Manufacturers of  
Vulcanised Fibre Containers

143 North Street, Romford, Essex

Tel.: Romford 47751

**JESSUPS (ROMFORD) LTD.**

VAUXHALL - BEDFORD MAIN DEALERS

LONDON ROAD, ROMFORD.

Tel. 42424

**STANWOOD RADIO LTD.**

RADIO AND TELEVISION SPECIALISTS

ROMFORD:

Earl

Colours: Blue and Gold

2  
Read

3  
Harris

4  
Reed

5  
White

6  
Gibbs

7  
Sanders

8  
Obeney

9  
Kelly

10  
Tapping

11  
Barnett

Referee:  
R. A. Paine (Southall)

FOR ALL SPORT  
ROMFORD  
TIMES

Linesmen:

Orange Flag  
J. Chamberlain (Ipswich)

Maroon Flag  
H. M. Prest (Sutton)

Whittaker  
11

Fry  
10

O'Rourke  
9

Read  
8

Gibson  
7

Moore  
6

Woods  
5

Reid  
4

Jardine  
3

Thomson  
2

Tinsley

LUTON TOWN

Colours: All White

RENTAL OR EASY TERMS

FREE 24 HOUR AFTER SALES SERVICE

22-24 SOUTH STREET — ROMFORD ROM 48835

**LEONARDS**

(Butchers) LTD.  
BUTCHERS

8 and 17 Quadrant Arcade  
Romford

Tel.: Romford 43336

**MATTHEWS & HAYES LTD.**

(Insurance Brokers)

Fire . Life . Accident . Marine . Annuities  
Group Pension and House purchase

206 Main Road, Gidea Park, Romford

Tel.: Romford 41805

**EDKO**

Sports Services Ltd.

Best for Fishing Tackle and Bait  
Sports Outfitters, Toys, Games, etc.

136 North Street, Romford  
(1 minute from Ground)

Tel.: Romford 61181

Tel.: Romford 41697

**King's Self Drive**

(8 a.m. — 11 p.m.)

Call in Today . Cortinas, Anglias, Brakes

201 North Street, Romford

(Outside the Stadium)

HOOVER — DUOMATIC — ROLLS  
SERVICE — REPAIRS — SPARES  
SPECIALISTS Free Estimates Given

**JANCO DOMESTIC  
ELECTRICAL SERVICES**

60, Victoria Road, Romford.

Tel.: ROMFORD 65759

"FOR NEW PROPERTIES"  
apply

**JELLEY (Builders) LTD.**

92 Slewins Lane, Hornchurch  
(near Romford)

Tel.: Hornchurch 43923

**D. McLURE**

HERBS

17a MARKET PLACE

ROMFORD

**GALLOWS CORNER**

**CARAVANS LTD., ROMFORD**

Agents for the locally made FAIRVIEW  
Range, and all other leading makes  
Pemberton, Bailey, Bluebird, Nene,  
Cresta, Summerdale, Astral, etc.

Mobile Hire Fleet Available

Tel.: Ingrebourne 41597

**SOUTH WEST ESSEX**

**CAR & TAXI HIRE SERVICE**

ANYWHERE, ANY TIME

Tel.: Romford 49183

**'Speight's'**

**BAKERS**

**Hornchurch 46699**

Home made bread & cakes  
Caterer's for all private  
functions  
Estimates on Request



# HOME or AWAY you need a GOOD GATE **FERRIS & LONG**

**CROWLANDS YARD . JUTSUMS LANE . ROMFORD**

**Telephone: ROMFORD 40789**

Tel.: Romford 43497

**Kenson Studio**

C. S. EATON

**108 VICTORIA ROAD  
ROMFORD, ESSEX**

: Photographers : : Photofinishers :

Houses, Bungalows, Factories, Schools, etc.

**Edward W. Smith**

(Romford) LTD.

**Building Contractors**

Consult our Maintenance Section  
for all Repairs and Decorations

**15 PARK LANE, ROMFORD**

Tel.: Romford 42241-2-3-4

If the trouble with your car is  
**ELECTRICAL**  
visit your local specialists

**DAVE W. MILLS & CO.  
LIMITED**

Automobile Electrical Engineers

**53 - 55 BRENTWOOD ROAD  
ROMFORD**

Tel.: Romford 42294-5

**KINGSWAY MOTORS  
(Romford) LTD.**

Distributors for



**Quickly**

**142 RUSH GREEN ROAD  
ROMFORD . ESSEX**

Tel.: Romford 48652

**For all Accident Repairs**

CONSULT THE EXPERTS

**CHAPMAN & COOPER LTD.**

AUTOMOBILE ACCIDENT REPAIR SPECIALISTS

**EAGLE WORKS, 300a CHIGWELL ROAD, WOODFORD GREEN**

**Telephone: BUC. 8654 - 3182**

**CLUB COMMENT—continued from page 3**

## Entertainment.

Following conversations with the British Legion Secretary, Mr. Stevens and other representatives of the British Legion Boys Band, we are pleased to welcome this band to Brooklands once more to give another of their excellent displays this afternoon, under the direction of Mr. Richardson. The boys will by arrangement with Mrs. McCord, make a collection for Earl Haig's Fund during the afternoon.

Prior to the Band's pre-match display, records provided by Messrs. Silcocks Ltd. of North Street, Romford will be broadcast.

## Match Ball.

Local Optician Mr. W. Muskett, of North Street, Romford, has very kindly donated the match football for this afternoon's game. We thank him very much for this kind gesture.

## Broadcast Equipment.

Several enquiries have been received from supporters of the Club, as to the possibilities of improving the ground broadcast equipment.

The Club is seeking advice on this matter through Messrs. Tucker Bros., who have assisted the Club very much in attempting to get a fair reception from the equipment at present on the ground. It would appear that the cost will run into hundred's of pounds, to renew all equipment.

However, it is hoped that improvements will soon be made to give a better reception to all parts of the ground.

## Essex Professional Cup Replay.

The replay with Brentwood Town in the above competition, will take place on Monday, 13th December, 1965. Kick-off 7.30 p.m. The Essex County Football Association, have kindly consented to this match being played in December, due to Romford's congested fixture list and F.A. Cup commitments this month.

## Car Draw.

The Draw for the Hillman Imp Motor Car, will take place at half-time today.

## Replay.

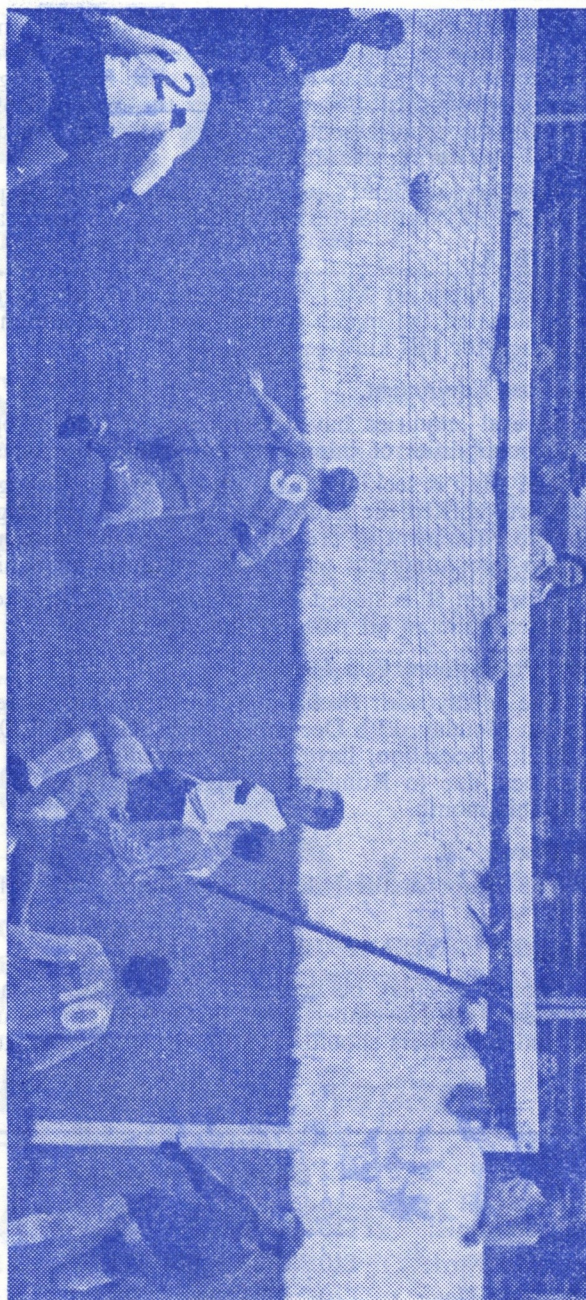
Should a replay be necessary after today's game, it will take place on Thursday, 18th November, 1965, K.O. 7.30 p.m. Stand tickets will be available and supporters should listen to the ground broadcast for further details.

Cheerio for now. John Haley.

## DAILY DIP RESULTS

Mon., 8th Nov.:	£10 7371	£4 5240	£3 10347	£2 0678
Tues., 9th Nov.:	£10 4927	£4 1353	£3 6095	£2 9056
Wed., 10th Nov.:	£10 5431	£4 13814	£3 9126	£2 10647
Thurs., 11th Nov.:	£10 6107	£4 7147	£3 3334	£2 7150
Fri., 12th Nov.:	£10 4149	£4 3594	£3 12862	£2 1272
Sat., 13th Nov.:	£100 7376		£20 10669	£10 1217





Harry Obeney heads Boro's first goal in the 4th Qualifying Round Tie versus Chelmsford City.  
Photo:- Romford Times

#### NEXT MATCHES AT BROOKLANDS

Wednesday, 17th November      v. SOUTHEND UNITED (Mercia Youth League)      K.O. 7.30 p.m.  
Saturday, 20th November      v. MARGATE (Southern League Premier Division)      K.O. 3 p.m.

#### VICE-PRESIDENTS

The following gentlemen, have been appointed Vice-Presidents of the Romford Football Club Ltd. for the 1965-66 season.

C. Adams, Esq.	G. F. Leigh, Esq.
S. Barkham, Esq.	A. Lumley, Esq.
W. Barrett, Esq.	C. R. Maryon, Esq.
A. F. Bates, Esq.	S. A. Metson, Esq.
J. Bishop, Esq.	N. A. Moore, Esq.
Cllr. R. Blythe	M. C. Olley, Esq.
C. A. Diebel, Esq.	R. T. Olley, Esq.
D. Earle, Esq.	R. Page, Esq.
B. Frost, Esq.	J. Rodwell, Esq.
S. Fillmore, Esq.	H. Saunders, Esq.
E. Gay, Esq.	J. Saunders, Esq.
F. Hibberd, Esq.	L. Stroband, Esq.
A. Holdstock, Esq.	C. Wakeling, Esq.
J. King, Esq.	F. Whiting, Esq.

#### LEAGUE TABLES

##### SOUTHERN LEAGUE PREMIER DIVISION

(up to and including 6th November '65)	P	W	D	L	F	A	Pts
Corby T.	14	7	4	3	25	18	18
Weymouth	13	6	5	2	19	12	17
Bedford T.	12	7	2	3	29	17	16
Wellington T.	13	5	6	2	30	19	16
Wimbledon	14	6	4	4	25	17	16
Hereford U.	14	5	6	3	19	15	16
Worcester C.	13	7	1	5	30	22	15
Yeovil T.	13	5	4	4	24	17	14
Chelmsford C.	12	5	4	3	15	12	14
<b>Romford</b>	<b>13</b>	<b>6</b>	<b>2</b>	<b>5</b>	<b>23</b>	<b>21</b>	<b>14</b>
Cambridge U.	12	5	3	4	18	15	13
Folkestone T.	10	4	3	3	19	16	11
Tonbridge	10	5	1	4	17	17	11
Margate	14	3	5	6	21	35	11
King's Lynn	13	5	1	7	19	34	11
Cambridge C.	10	4	2	4	11	15	10
Dartford	13	3	3	7	15	18	9
Rugby T.	13	3	3	7	16	29	9
Nuneaton B.	12	4	0	8	16	22	8
Poole T.	12	3	2	7	16	25	8
Cheltenham T.	12	2	4	6	13	25	8
Guildford C.	10	2	3	5	9	18	7

##### MERCIA YOUTH LEAGUE CUP

(up to and including 6th November 1965)	P	W	D	L	F	A	Pts
Ipswich T.	9	9	0	0	43	7	31
Cambridge U.	12	8	1	3	37	20	28
Southend U.	13	7	1	5	30	18	25
Cambridge C.	10	6	0	4	27	13	21
<b>Romford</b>	<b>11</b>	<b>5</b>	<b>1</b>	<b>5</b>	<b>19</b>	<b>20</b>	<b>20</b>
Stevenage T.	9	4	2	3	10	10	16
Chelmsford C.	9	4	1	4	30	24	14
Colchester U.	12	3	2	7	26	43	12
Bedford T.	10	2	2	6	18	27	9
Hitchin T.	11	0	0	11	9	67	0
Points awarded:- Away Win (4); Home Win (3); Away Draw (2); Home Draw (1)							

##### EASTERN PRO. FLOODLIGHT COMP.

(up to and including 8th November, 1965)	P	W	D	L	F	A	Pts
Chelmsford C.	6	4	0	2	13	10	8
King's Lynn	5	2	2	1	14	8	6
<b>Romford</b>	<b>5</b>	<b>3</b>	<b>0</b>	<b>2</b>	<b>15</b>	<b>10</b>	<b>6</b>
Bedford T.	4	1	1	2	7	7	3
Cambridge C.	4	1	1	2	9	11	3
Cambridge U.	2	0	2	0	4	4	2
Wimbledon	2	1	0	1	4	4	2
Kettering T.	2	0	0	2	1	13	0



## SUPPORTERS' AND SOCIAL CLUB NOTES

Good Afternoon Everybody,

A most warm welcome to the officials, players, and supporters of Luton Town, our formidable opponents in today's 1st Round of the F.A. Cup. The history of the "Hatters" has already been covered elsewhere in this programme, so there is little for me to say about them, but this I will say to all Boro' fans, — give the lads in Blue and Gold every bit of vocal encouragement possible, and I am sure they will respond to your call, thus ensuring all present this afternoon with a good 90 minutes of football.

**"THERE IS NO DEPRESSION IN THIS HOUSE AND WE ARE NOT INTERESTED IN THE POSSIBILITIES OF DEFEAT — THEY DO NOT EXIST!!"**

These famous words spoken by a famous Queen of past years should not only be in the minds of the Romford players today but also in the minds of all Boro' fans. To pinch a phrase from a well known Sunday T.V. series "In the next 90 minutes anything can happen and most probably will!!" Couple these two quotes together and you have the formula to success, so when the lads come on to the field this afternoon give them the biggest roar that has ever been heard at Brooklands, and those older supporters will know it will take some beating, but YOU can do it, with the help of your mate next to you, so give it all you've got with ROM-FORD, ROM-FORD, UP THE BORO!!

As was reported in these notes the last two weeks by my colleague, Les Blome, I have been in hospital for a short period of time, but I am glad to say I am now back in harness and look forward to being with you all today. I should like to take this opportunity of thanking Les for stepping in for me and for the other little things he has done for me, a good card this chap. I should also like to pass a message through these notes to any of the lads I was in hospital with (Rush Green 12b) should they be here today and I know they were hoping to be, why not join me in a drink (Celebration of course) after the game in the Club under the main stand.

**PLAYERS POOL.** As many of you are aware this Pool is run in conjunction with the National Federation of Football Supporters' Clubs' and is run and organised on behalf of our members by Tommy Keery, a member of our Committee. The pool which costs 1/- per week gives you the chance of winning a top prize of £1,000 besides several others of large sums every week. For Romford agents only, there is also the chance of a FREE holiday for two in the British Isles in the new year. All proceeds of this pool, like all monies collected by our club are given to the Romford F.C. Why not do your bit by helping Tommy give the Club even more this year by becoming an agent. For this worthwhile job you are paid a handsome commission, probably the largest in the Country, so enquire from Tom today at the Supporters Office or write to him, T. H. Keery, 31 Sheila Road, Romford.

**CLUB SHOP.** This shop which is open every match day is situated on the terracing at the North Street end of the ground and many articles of interest to the football fan can be purchased at very moderate prices. Why not on your way out today, have a look in and see if there is anything of interest that you may require.

**SOCIAL ACTIVITIES.** Next Saturday, November 20th, another of our monthly Dances takes place from 8 until 11.30 p.m. If you have never been to one of these "do's" then why not bring the wife for a shuffle, if not somebody else's. Admission at the door 4/-.

**"ROM-FORD, ROM-FORD, UP THE BORO!!"**

E.W.T.

# DOUBLE DIAMOND

## THE BEER THE MEN DRINK

**KEITH HALEY**  
**94 MAWNEY ROAD, ROMFORD**  
Tel.: Romford 41663

TIMBER . PLYWOOD . HARDWOOD, etc.  
Prepared and Sawn  
SOFTWOOD . MOULDINGS, etc.  
large selections of  
PLYWOOD and PLASTIC OFFCUTS  
Everything for the  
DO-IT YOURSELF HANDYMAN  
Free Deliveries

SEV. 1900 SEV. 8298

**OULDFIELD GARAGE LTD.**  
**321/3 HIGH ROAD**  
**CHADWELL HEATH, ROMFORD**

SALES . FIAT . SERVICE

All makes of New and Secondhand cars

If you are now to this district be sure to visit

**THE PANTRY**

where everything is made on the premises

All our Cakes and Sponges are made with English Shell Eggs — Fresh Cream Fancies every week-end! — Birthday and Wedding Cakes to order — Cakes — Pastries — Bridge Rolls — Real Scotch Shortbread — Scones Sausage Rolls, etc.

— Morning Coffee and Afternoon Tea —

**166a MAIN ROAD, GIDEA PARK**

Tel.: Romford 48808

**WEARER BENEFIT FOOTWEAR  
REPAIRS**

**187 London Road 125 George Street  
Romford Romford**

Agents for:

Tuf  
Saville Row  
Regent  
Dunlop  
Pirelli



48 HOUR'S  
Service  
Collection  
and Delivery

Write for Representative to Call

*for a good impression . . .*

**THE ROMFORD PRESS  
LIMITED**

**61 NORTH STREET, ROMFORD**

Tel.: Romford 40777

**J. CODD & SON**

PAINTING and DECORATING  
CONTRACTOR

**23 LOWSHOE LANE**

**COLLIER ROW, ROMFORD**

Tel.: Romford 44288



Established 1894

# McKENZIE & TAPP LTD.

**EASTERN AVENUE . ROMFORD . ESSEX**

Plain and Printed Tin Boxes

for Tea, Coffee, Bakers Sundries and Chemicals

**QUALITY METAL DECORATORS**

Telephone: Romford 46392-3-4

Tyres from £1 each

From

**A. W. TYRE SERVICE**

**15 WHEATSHEAF ROAD**

**ROMFORD, ESSEX**

Tel.: Romford 48510

## M. L. RAMSAY

Newsagent, Confectioner, Stationer,  
Tobacconist

**58 COLLIER ROW LANE**

**ROMFORD, ESSEX**

Tel.: ROMford 47732

## F. MILES

**"Roseville" Guest House**

**86 EASTERN ROAD**

**ROMFORD**

**ESSEX**

## FISH AND CHIPS

also

WET, SMOKED and SHELL-FISH

CATERERS SUPPLIED

Frying Lunch time and Evenings

**TUESDAYS to SATURDAYS**

## ROBINSON'S

**83 PARK LANE, HORNCURCH**

Tel.: Romford 48664

## R. J. Cooper



**149 STANLEY AVENUE  
GIDEA PARK, ROMFORD  
ESSEX**

Decorating, Painting, Paperhanging  
a Speciality  
Quickly, Cleanly executed

Tel.: Romford 49317

Indian Dishes add to the enjoyment of an  
evening out at the

**Golden Orient Indian  
Restaurant**

**42 - 42a LONDON ROAD  
ROMFORD, ESSEX**

Inquiries welcomed for Wedding and  
Social Functions  
Open 12 noon until 3 p.m. and 6 p.m. until  
midnight including Sundays and Holidays

Tel.: Romford 46704