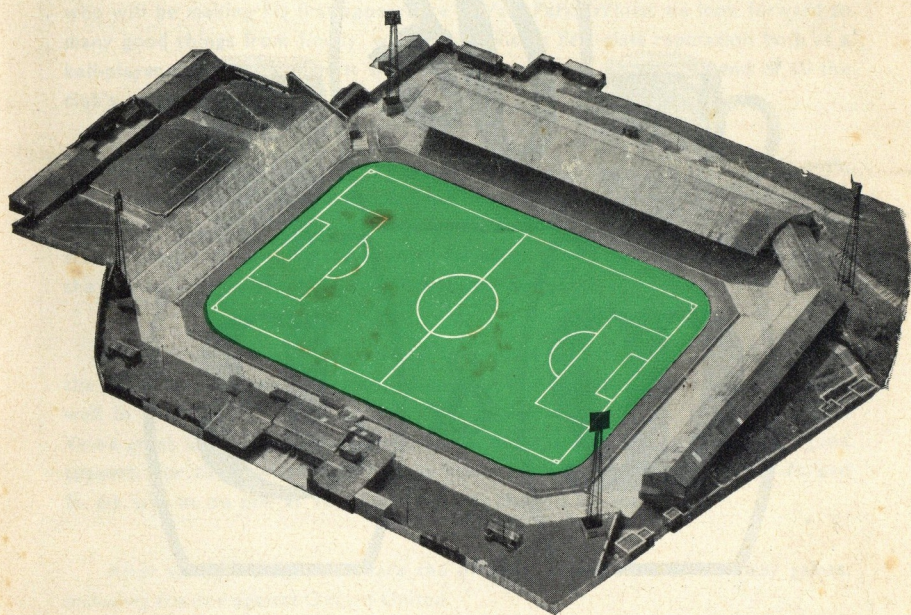


**PORT VALE**  
**FOOTBALL CLUB**



**PORT VALE v. LUTON TOWN**  
**SATURDAY, 30th OCTOBER - 1965**

*Official Programme . . Sixpence*



# The Champions



Bass, Mitchells & Butlers Limited

## Port Vale Football Club Co., Ltd.

Registered Office : VALE PARK, BURSLEM, STOKE-ON-TRENT

Telephones : Stoke-on-Trent 87626 and 85524

### Directors :

T. E. Talbot, M.B.E., J.P. (Chairman)  
Ald. G. L. Barber, J.P. (Vice-Chairman)  
F. W. Burgess F. M. Pinfold  
W. E. Elkes A. McPherson

M. J. Singer

### General Manager :

Sir Stanley Matthews, C.B.E.

Player-Manager : Jackie Mudie

Secretary : N. J. Jones

Hon. Medical Officer : Dr. R. D. Glaister

### VIEW FROM THE TERRACE

WE EXTEND A HEARTY WELCOME today to our latest signing, Jimmy Hill, who will be making his first appearance at Vale Park. Whilst we look forward to many good things from Jimmy, who comes with a first-class reputation both as a ball-player and a marksman, it would be folly to think he was the end of all the club's problems.

The club has affirmed that the underlying policy at Vale Park is one of youth, but promotion is still a major aim and the further strengthening of the team for the campaign that lies ahead is still occupying the minds of the management. Vale scouts have been combing the country for many weeks now. Jimmy Hill is one of the results, and the likelihood is that there will be more.

Vale are given a formidable away-from-home assignment in the first round of the F.A. Cup on November 13th, when they visit Oxford United, who are doing well in the Third Division. It should be an attractive fixture, particularly with Vale's great Cup-fighting tradition in mind, and the club will be hoping for good support. For those wishing to reserve seats, a number of tickets, priced 7s. and 5s. 6d. will be on sale at Vale Park towards the end of next week.

After to-day's match Vale face the prospect of four successive away games, including the one against Oxford United.

We have learned with deep regret of the death of Mr. Frederick W. Cousens, the former Burslem building contractor, who always had the interests of Port Vale at heart and was one of the original members of Vale's 100 Club. Our sympathy is extended to Mrs. Cousens.

VALEITE.



## JAMES NORRIS (Burslem) LTD

ESTABLISHED 1879

21 MARKET PLACE, BURSLEM

*Wine and Spirit Merchants, Ale and Porter Bottlers*

**BURSLEM AND HANLEY**

STOKE-ON-TRENT

Telephone Stoke-on-Trent 87415

## SHORE'S MOTORS

FOR NEW AND USED CARS

**VICTORIA GARAGE - SNEYD STREET - SNEYD GREEN**

STOKE-ON-TRENT

Telephone : Stoke-on-Trent 21312

**WE INVITE YOU TO SEE OUR SELECTED RANGE OF QUALITY CARS — WHY NOT CALL ON YOUR WAY FROM THE MATCH?**

FILL UP WITH V.I.P. PETROL.

**SAVE 6d. PER GALLON ON PREMIUM 95.**

**Non-Ferrous Castings of every description ...**

## MILTON NON-FERROUS CASTINGS CO. LTD.

**MILLRISE ROAD - MILTON - STOKE-ON-TRENT**

Telephone : STOKE-ON-TRENT 54176



**THE LEADING SPORTS OUTFITTERS IN NORTH STAFFS — AND SPORTS CONTRACTORS TO EDUCATION AUTHORITIES THROUGHOUT THE COUNTRY.**

**520/2 KING STREET, LONGTON, STOKE-ON-TRENT**

Telephone : Stoke-on-Trent 32218/9

## HORIZON HOLIDAYS for people who value independence

Please write for fully comprehensive coloured brochure.

**HORIZON HOLIDAYS LTD.**

24 Bruton Street, London, W.1

Phone : MAYfair 8262

## The Silverdale Co-operative Society Limited

Invite you to be **RIGHT INSIDE**  
and Share in the **Trading Profit.**

Last year over

**£100,000** was returned to Members  
in Branches in Newcastle  
and District.

**Let's Co-operate ...**

**It pays Dividend**

## OUR VISITORS ...

THE LUTON TOWN Football Club was founded in 1885 and was reputed to be the first club in the South to employ professional players.

They played in the Southern League from 1894 - 96 and were elected the following year (1887) to the Football League Division Two. Known as the "Hatters" or the "Straw Plaiters".

Luton were in Division Two from 1897 to 1900 when they failed to gain re-election. They then operated again in the Southern League until 1920 when they were elected to the Third Division and in 1921 were members of the Third Division South.

They gained promotion to the Second Division in 1937 after being runners-up the previous season and in 1955 were runners-up and of course were promoted to the First Division where they remained until season 1959 - 60. After a short spell in the Second Division were relegated with 29 points; only winning one game away from home and losing 17 — the remaining three away games were drawn.

The season before last Luton finished in 18th position with 42 points. They won 16 matches, lost 20 and drew 10, scoring 64 goals against 80. knocked us out of the League Cup at Vale Park.

Last season Luton were relegated with 33 points, winning 11 matches, losing 24 with 11 drawn.

Luton were quarter finalists in the F.A. Cup in 1933 and 1952.

In season 1936 - 37 Luton scored 103 goals in 42 matches, and of this number Joe Payne scored 55 which was then a record for the Division 3 South. In the previous season the same player made history on his debut at centre forward by scoring 10 goals in a Third Division South match against Bristol Rovers whom they beat 12 - 0.

## G. H. Downing & Co. Ltd. Brampton Hill, Newcastle, Staffs.

Manufacturers of:

**HIGH GRADE FACING & ENGINEERING  
BRICKS, 'ACME' ROOFING TILES**



## SCOTIA DIES

(Burslem) LIMITED  
DIE MANUFACTURERS  
and  
CERAMIC ENGINEERS



Brindley Street - Middleport  
**BURSLEM**  
Stoke-on-Trent

Telephone: Stoke-on-Trent 84314

BUY...

## NONSUCH TOFFEE

WALKERS NONSUCH LTD.  
Calverley Street, LONGTON  
Stoke-on-Trent. Phone: 33391

## W. A. HOLDCROFT

Phone: 87742

& SONS LTD.

9, 11, Brickhouse Street, BURSLEM

SEE OUR VAST RANGE OF DININGROOM,  
BEDROOM AND LOUNGE SUITES...



by G-Plan - Limelight - Nathan

Meridew - Bridgecraft - Elliots

Fireside Chairs, Fitted Carpets

Greaves & Thomas - Austin - Priory

Studio Couches, China Cabinets

Divans, Etc.

## F. T. Stubbs

(COACHES) LTD.

COACHES FOR PRIVATE HIRE  
WORKS OUTINGS CATERED FOR



Telephone: 88365

Williamson Street Garage  
**TUNSTALL**  
STOKE-ON-TRENT

## NAYLORS MENSWEAR

(H. Naylor)



THE BOULEVARD  
**TUNSTALL**  
STOKE-ON-TRENT

Telephone: Stoke-on-Trent 87729

WHY DON'T YOU SEE US ABOUT  
YOUR  
MOTOR INSURANCE?  
**LESLIE G. WHALLEY  
& CO.**

Insurance and Finance Brokers  
PREMIUMS BY INSTALMENTS  
60% NO CLAIMS BONUSES  
Hire Purchase arranged for the  
purchase of Cars, Etc.  
Security House, 1 QUEEN STREET,  
BURSLEM - STOKE-ON-TRENT  
Telephone: 88744 (2 Lines)

BRITISH CERAMIC SERVICE Co. Ltd.



WOLSTANTON, NEWCASTLE, STAFFS.

### LEAGUE DIVISION IV

#### HOME

#### AWAY

P. W. D. L. F. A. W. D. L. F. A. P.

Torquay United	...	15	7	1	0	13	1	...	3	1	3	10	12	22
Tranmere Rovers	...	15	5	1	0	12	4	...	3	3	3	13	14	20
Chesterfield	...	14	3	3	1	15	10	...	3	2	2	9	8	17
Chester	...	13	6	1	0	22	9	...	1	2	3	8	12	17
Barnsley	...	14	5	1	0	15	3	...	2	2	4	11	18	17
Notts. County	...	13	3	3	1	11	7	...	4	0	2	8	8	17
Barrow	...	13	5	2	1	18	9	...	1	2	2	8	11	16
Darlington	...	13	4	0	2	10	4	...	2	3	2	8	10	15
Luton Town	...	12	6	0	1	22	11	...	1	1	3	5	10	15
Colchester United	...	12	5	1	0	13	3	...	1	1	4	3	9	14
Southport	...	14	3	3	0	9	5	...	1	3	4	10	19	14
Rochdale	...	13	4	0	3	15	9	...	2	1	3	7	11	13
Aldershot	...	14	5	1	1	18	7	...	0	2	5	7	18	13
PORT VALE	...	13	5	2	0	15	4	...	0	0	6	2	9	12
Stockport County	...	14	3	1	2	10	7	...	2	1	5	14	13	12
Doncaster Rovers	...	12	5	0	1	14	3	...	1	0	5	5	13	12
Newport County	...	13	4	1	1	15	8	...	1	0	6	7	19	11
Lincoln City	...	13	2	3	1	11	8	...	2	0	5	5	15	11
Bradford	...	13	2	1	4	12	11	...	2	1	3	9	11	10
Crewe Alexandra	...	13	3	0	3	12	6	...	1	2	4	4	13	10
Wrexham	...	15	4	1	3	14	13	...	0	1	6	7	18	10
Halifax Town	...	13	2	3	2	9	10	...	0	1	5	6	14	8
Hartlepool United	...	13	3	1	3	14	10	...	0	1	5	1	16	8
Bradford City	...	13	2	1	3	10	13	...	0	1	6	8	26	6

League Positions as at 27/10/65



**H & R Johnson Ltd**

**Tunstall Stoke-on-Trent**

manufacturers of ceramic glazed tiles



# George Baskerville

Proprietor: ROY CHADWICK

DEMOLITION and STEEPLEJACK CONTRACTOR

ALL TYPES OF DEMOLITION MATERIALS FOR SALE

APPLY :—

24 MARTIN STREET, COBRIDGE, STOKE-ON-TRENT

Telephone : Stoke-on-Trent 29455

## ALL TRAVEL SERVICES LTD

4 WESTPORT ROAD, BURSLEM, STOKE-ON-TRENT

Stoke-on-Trent 85373 - 4

Head Office : ' OCEAN HOUSE ', LONDON, E.C.4.

We offer personal and professional service covering travel by

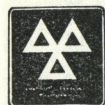
**LAND — SEA — AIR**

Kindly visit our bureau or telephone 85373 - 4

**BRITISH RAILWAY TICKETS AT STATION PRICES**

All Airline, Steamship and Continental Rail Reservations, Cruises, Tours and inclusive Holidays by Leading National Operators, including Cosmos Hotel Plan, Lyons, Horizon and Swans. Members of the Association of British Travel Agents.

Members of the M.A.A., B.M.T.A.



# DAVIES MOTORS

(STOKE-ON-TRENT) LIMITED



**WATERLOO ROAD and REMER STREET, COBRIDGE  
STOKE-ON-TRENT**

Telephone : Stoke-on-Trent 22545

**Any Make or Type of Car or Commercial Vehicle Supplied**

**AGENTS FOR SIMCA**

**USED CAR SPECIALISTS**

## J. ARTHUR FARRINGTON & SON LIMITED

HAMIL ROAD, BURSLEM

STOKE-ON-TRENT

'Phone 87114 (3 lines)

**STEEL STOCKHOLDERS - IRONMONGERS**

**IMMEDIATE DELIVERIES**

### FOURTH DIVISION FIXTURES

1965/66	Opponents	F.	A.
Aug. 21	Colchester United	H	1 0
24	Barnsley ...	A	0 1
27	Tranmere Rovers ...	A	0 1
Sept. 1	Reading (L. Cup) ...	H	2 2
4	Stockport C. ...	H	2 0
8	Reading (L. Cup)	A	0 1
11	Darlington ...	A	1 2
13	Barnsley ...	H	1 1
18	Lincoln City ...	H	3 0
25	Notts. County ...	A	1 3
Oct. 2	Chester ...	H	5 2
4	Crewe Alex. ...	H	2 0
9	Torquay United ...	A	0 1
16	Chesterfield ...	H	1 1
22	Rochdale ...	A	0 1
30	Luton Town ...	H	
Nov. 6	Barrow ...	A	
13 (1)	Doncaster Rov. ...	A	
19	Doncaster Rov. ...	A	
24	Crewe Alex. ...	A	
27	Southport ...	H	
Dec. 4 (2)	Bradford ...	H	
11	Bradford ...	H	
18	Chesterfield ...	A	
27	Bradford City ...	A	
28	Bradford City ...	H	

### FOURTH DIVISION FIXTURES

1965/66	Opponents	F.	A.
Jan. 1	Torquay United ...	H	
8	Hartlepool U. ...	A	
15	Rochdale ...	H	
22 (3)	Colchester United	A	
Feb. 29	Tranmere Rovers ...	H	
12 (4)	Aldershot ...	A	
18	Stockport C. ...	A	
26	Darlington ...	H	
Mar. 5	Aldershot ...	H	
12	Lincoln City ...	A	
19	Notts. County ...	H	
21	Hartlepool Utd. ...	H	
26 (6)	Chester ...	A	
April 2	Barrow ...	H	
8	Wrexham ...	A	
9	Wrexham ...	A	
11	Newport County	A	
12	Newport County	H	
16	Doncaster Rov. ...	H	
23 (S.F.)	Southport ...	A	
25	Halifax Town ...	H	
30	Wrexham ...	H	
May 7	Bradford ...	A	
14 (Final)	Halifax Town ...	A	
17	Halifax Town ...	A	
28	Luton Town ...	A	

### WEST MIDLANDS (REGIONAL) LEAGUE

1965/66	Opponents	F.	A.
Aug. 21	Bilston ...	A	2 4
28	Atherstone Town	H	3 3
30	Cinderford T. (L.C.)	A	1 3
Sept. 7	Stourbridge ...	A	2 4
11	Bilston ...	H	0 0
14	Bromsgrove Reserves	A	3 3
18	Cinderford Town ...	A	3 2
25	Redditch ...	H	4 3
Oct. 2	Banbury United ...	A	3 1
9	Wolves 'A' ...	A	2 1
16	Wolves 'A' ...	A	2 1
23	Brierley Hill ...	H	4 0
30	Walsall Reserves ...	A	
Nov. 6	Lye Town ...	H	
13	Kidderminster Harr.	A	
20	Tamworth ...	H	
27	Stratford Town Amat.	A	
Dec. 4	Halesowen Town	H	
11	Dudley Town ...	A	
18	Bromsgrove Rov.	H	
27	Hednesford ...	A	

### WEST MIDLANDS (REGIONAL) LEAGUE

1965/66	Opponents	F.	A.
Jan. 1	Darlaston ...	A	
8	Stourbridge ...	H	
15	Bedworth Town ...	A	
22	Bedworth Town ...	H	
29	Darlaston ...	H	
Feb. 5	Atherstone Town ...	A	
12	Cinderford ...	H	
19	Cinderford ...	H	
26	Redditch ...	A	
Mar. 7	Dudley Town ...	H	
12	Wolves 'A' ...	H	
26	Walsall Reserves ...	H	
April 2	Lye Town ...	A	
11	Hednesford ...	A	
9	Kidderminster Harr.	H	
16	Tamworth ...	A	
23	Stratford Town Amat	H	
30	Halesowen Town	A	
3	Lower Gornal Ath.	A	
May 7	Dudley Town ...	A	
14	Lower Gornal Ath.	H	
21	Lower Gornal Ath.	H	
28	Banbury Utd. ...	A	



What is the Car of **YOUR** Choice ?

Why not consult us

**WHAT EVER IT MAY BE ...**

**DALE HALL GARAGE LTD.**

NEWCASTLE STREET, BURSLEM, STOKE-ON-TRENT

Telephone : Stoke-on-Trent 87802 — 87885

**B.M.C. Stockists. Any Make of Car Supplied  
Demonstrations Without Obligation**

Telephone :

**STOKE-ON-TRENT  
88958**

**Potteries**

**Engineering Ltd**

GENERAL FABRICATIONS  
GENERAL SHEET  
METALWORK  
MACHINERY AND PLANT  
INSTALLED, REPAIRED  
AND OVERHAULED  
DUST EXTRACTION  
AND COLLECTION  
DRYING UNITS for  
Any Industry  
FUME EXTRACTION  
AIR CONDITIONING  
HEATING and  
VENTILATING

CONSULT OUR STAFF OF  
TECHNICAL SPECIALISTS  
ESTIMATES FREE  
**DUCAL STREET  
BURSLEM  
STOKE-ON-TRENT**

**YOU'RE ON THE BALL  
WHEN YOU ...**

**RENT T.V.**

from as little as 6/- Per Week

**CADMAN'S**

6 Swan Square, BURSLEM, Stoke-on-Trent  
Branches Throughout North. Staffs.

**CRANE HIRE and HEAVY LIFTING EQUIPMENT  
FOR MACHINERY MOVEMENT AND INSTALLATION**

**PACE ARCLID LIMITED**

ARCLID Near SANDBACH

★ **DISTRIBUTORS OF GAS AND VAPOURISING OILS** ★

Telephone : SMALLWOOD 256 and 202

**NORTON GARAGE  
(STOKE-ON-TRENT) LTD.**

**FORD GREEN ROAD - NORTON  
STOKE-ON-TRENT** Telephone : 54719

**FORD — ANGLIAS — CORTINAS  
CORTINAS — ZEPHYRS — ZODIACS**

A Large Selection of Used Cars Always in Stock

**PORT VALE**

Sub : **RICHARDS**

White Shirts, Black Shorts, Black and White Stockings

Right

Left

		1			
		O'NEILL			
	2		3		
	WHALLEY	5	WILSON		
	4	ALCOCK	6		
	POOLE		MILES		
7		8		11	
SMITH		MUDIE	10	TAYLOR	
		9	HILL		
		ROWLAND			
<div>Referee :— Mr. G. MARTIN (Whitchurch, Hants.)</div> <div>REMEMBER ... after the match VISIT <b>TRENTHAM GARDENS</b> Fully Licensed Bars - Ballroom Dinner Dances Phone : Stoke-on-Trent 57341</div> <div>Linesmen :— Mr. G. H. MORRIS (Blackheath) Orange Flag Mr. D. H. CROSS (Solihull) (Red Flag)</div>					
WHITTAKER	HARBER	O'ROURKE	READ	FRENCH	
11	10	9	8	7	
	MOORE		REID		
	6		4		
	JARDINE	RIVERS	THOMSON		
	3	5	2		
		TINSLEY			
		1			
		LUTON TOWN			
		Red Shirts, White Shorts			

Left

Right

**LUTON TOWN**

Sub : **GIBSON**

Red Shirts, White Shorts

**CRYSTAL  
BALLROOM**

★ **MECCA DANCING** ★

**WEDNESDAY  
EVENING**

7-30 p.m. till 1-0 a.m.  
(Adults Only)

**OVER 21 NIGHT**

MODERN DANCING

and

CONTINENTAL NIGHT SPOT

**ADMISSION - 4/6d.**

Late Bars until 1-0 a.m.

**SATURDAY**

**EVENING**

7-30 p.m. till 1-0 a.m.

Over 2,000 Dancers Enjoy

**'PALAIS' NIGHT**

★ **FOUR BANDS**

★ **TWO BALLROOMS**

★ **ONE ADMISSION**

**ADMISSION - 6/6d.**

Late Bars - Late Buses

**NEWCASTLE, STAFFS.**



*all the FANS agree—*

**Champion**

**BREAD & CAKES FOR TEA**

**S. D. TAYLOR LIMITED**

(INCORPORATING S. D. TAYLOR (WHOLESALE) LIMITED)

**Manufacturers, Importers and Wholesalers**

**41/69 HUNTBACH STREET - HANLEY**

**STOKE-ON-TRENT** Telephone : 23535 (10 lines)

Complete Clothiers and Outfitters, Carpets, Bed-  
ding, Furniture, Household Goods. All Electrical  
Goods, including—Washers, Fridges, Radios.



# HALF-TIME SCOREBOARD

A	ASTON VILLA SHEFFIELD WED.	.....
B	BLACKBURN ROVERS EVERTON	.....
C	BLACKPOOL MANCHESTER UTD.	.....
D	FULHAM NEWCASTLE U.	.....
E	LEEDS UNITED BURNLEY	.....
F	LEICESTER CITY ARSENAL	.....
G	LIVERPOOL NOTTS. FOREST	.....
H	SHEFFIELD UNITED CHELSEA	.....
K	SUNDERLAND NORTHAMPTON TOWN	.....
L	TOTTENHAM W.B.A.	.....
M	WEST HAM UNITED STOKE CITY	.....
N	BRISTOL CITY PLYMOUTH A.	.....
O	CARDIFF CITY IPSWICH TOWN	.....
P	CARLISLE UNITED BOLTON WANDERERS	.....
Q	COVENTRY C. PORTSMOUTH	.....
R	MANCHESTER CITY CHARLTON A.	.....
S	NORWICH CITY HUDDERSFIELD T.	.....
T	WOLVERHAMPTON W. CRYSTAL PAL.	.....
U	BRADFORD CITY HARTLEPOOLS UTD.	.....
V	CHESTER CHESTERFIELD	.....
W	COLCHESTER UTD. SOUTHPORT	.....
X	DARLINGTON ALDERSHOT	.....
Y	LINCOLN CITY NEWPORT COUNTY	.....
Z	NOTTS. COUNTY TORQUAY UNITED	.....

# APPEARANCES

	1st	2nd
Alcock, T. ...	9	3
Bannister, P. ...	3	7
Bostock, J. ...		5
Boulton, C. ...	5	5
Carter, H. ...		1
Castledine, K. ...		5
Cummings, J. ...	1	7
Donald, A. ...		3
Ford, P. W. ...		3
Hill, J. ...	1	
Hulme, J. ...		1
Ikin, J. ...		5
James, J. ...		2
Johnson, A. ...		4
Lowe, T. J. ...	5	1
Machin, M. ...	1	7
McAlinden, R. ...		4
Miles, T. ...	11	
Mitchell, D. J. ...	1	9
Moffatt, S. ...		2
Morrison, T. ...	2	5
Mudie, J. K. ...	8	
Nicholson, J. P. ...	6	3
O'Neill, J. ...	13	
Poole, H. ...	13	
Richards, A. W. ...	8	
Rowland, J. D. ...	14	
Sproson, R. ...	1	4
Spraggett, C. J. ...		8
Smith, R. W. ...	14	
Stubbs, J. ...		5
Taylor, B. J. ...	14	
Tunstall, D. ...		8
Turner, S. ...		
Whalley, S. D. ...	6	2
Wilson, R. ...	14	

# GOAL SCORERS

	1st	2nd
Bannister, P. ...	1	
Cummings, J. ...		4
Donald, A. ...		2
Machin, M. ...		3
McAlinden, R. ...		2
Mitchell, D. J. ...	1	7
Morrison, T. ...		2
Richards, A. ...	1	
Rowland, J. ...	8	
Smith, R. ...	1	
Taylor, B. ...	1	
Tunstall, D. ...		2
Own Goal ...		1

# PLASTERING

carried out by

# J. T. MASON

12, BARFORD ROAD

NEWCASTLE, Staffs.

Telephone : 66696

# SUMMERBANK SERVICE STATION

(C. D. YOUNG)



TYRES  
SPARES  
BATTERIES

★  
CAR  
EXCHANGE



HIGH STREET - TUNSTALL  
STOKE-ON-TRENT 'Phone 85561

# W. ROBINSON & SONS

WIRE WEAVERS



WIRE MACHINERY GUARDS WIRE WINDOW GUARDS  
WIRE FIREGUARDS - - - WIRE BASKETS  
EX-STOCK - - - POTTERS' SIEVE and LAWN SERVICE  
WIRE MESHES IN ANY METAL - 1-300 MESH



KING STREET - NEWCASTLE - STAFFORDSHIRE

Established 1830

Telephone : 66445

# SPENCER & SONS (Hauliers) LTD.

Haulage Contractors

Sand, Gravel and General Dealers

Long Distance and Tipping Vehicle Service

PORTHILL, NEWCASTLE, STAFFS. Phone : 52572

Officially appointed for the ... N.C.B. HOUSEWARMING PLAN

Specialists in —

Small Bore, Solid Fuel, Gas, Oil Heating Installations

For further details, contact —

# BRUNDRETT & SONS LIMITED

ERGON WORKS, WOODLAND ST., TUNSTALL, Stoke-on-Trent

Telephone : Stoke-on-Trent 87904

Established 1909



# LUTON TOWN

## PEN PICTURES OF PLAYERS

for Season 1965/66

### BILLY HARBER (Forward)

Joined Luton from Swindon — where he played inside forward — on a free transfer in September, 1964, but made his debut for Luton as a winger, and towards the end of last season held this position.

### FREDDY JARDINE (Full Back)

Born in Edinburgh. Played for Dundee for two seasons before coming to Luton at the end of season 1960-61. He came as an outside left, but was successfully converted to a full back.

### JOHN MOORE (Wing Half)

A newcomer to Luton, having been signed from Motherwell in May, 1965. He was recommended to us by our Scottish representative who forecasts a bright future for him in English football.

### JOHN O'ROURKE (Centre Forward)

Was previously with The Arsenal and Chelsea, from whom we signed him on a free transfer in December, 1964. He immediately made his mark at Luton and scored 22 goals in 23 League appearances for us.

### TONY READ (Goalkeeper)

Born at Haydock. His first club was Sheffield Wednesday, and in 1964 he left them to go to Peterborough for whom he also played at Centre Forward. He was transferred to Luton in March, 1965.

### JOHN REID (Inside Forward)

Previously played for Bradford and Northampton to whom we made a substantial transfer fee in November, 1963.

### ALAN RIVERS (Half Back)

Born at Portsmouth. He migrated to this area and was recommended to us in 1961. Progressed through our Junior Teams and signed full professional forms in January, 1964.

### COLIN TINSLEY (Goalkeeper)

Born at Middlesborough, his first club being Grimsby Town, then to Exeter City before joining Luton in August, 1963.

### BOBBY THOMSON (Full Back)

Born at Menstrie in Scotland. He first came into prominence with Partick Thistle, and was later transferred to Liverpool for a big fee. Luton secured his services from the latter club on the 2nd August, 1965.

### RAY WHITTAKER (Outside Left)

A Londoner from Bow. His only other club being The Arsenal. Joined us in March, 1964 and went straight into the First team and held his place for the remainder of the season.

Naybro Cast Stone  
Exposed Aggregate Cladding  
Precast Concrete Units



HOUSING UNITS - LINE POSTS  
EDGINGS - PAVINGS - ROCK  
FACED WALLING - GARAGES

Also Surface Silos - Cattle Drinking  
Troughs - Bus Shelters - Etc.



Sand and Gravel  
for all purposes

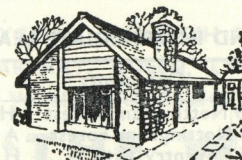
**NAYBRO STONE LTD.**  
LIGHTWOOD - LONGTON

Telephone : Stoke-on-Trent 39051 - 2

HOME OR AWAY  
ONE BANKER YOU  
CAN ALWAYS RELY ON

BETTYS'  
HERBAL COUGH  
TABLETS

OLD BETTY PLANT'S  
HANLEY - STOKE-ON-TRENT



High-Class Painter & Decorator

**B. HOWELL**  
150-152 NORMACOT ROAD  
LONGTON - STOKE-ON-TRENT  
Telephone : Stoke-on-Trent 33952



Telephone : Stoke-on-Trent 32756

Telephone : Stoke-on-Trent 23247/8

**KEATES  
LIMITED**

Parker Street Hanley Stoke-on-Trent

Established 1849

COLOUR PRINTERS  
BOOKBINDERS & STATIONERS  
and also  
GRAPHIC DESIGNERS



Saturday, November 6th at 3-15 p.m.

**PORT VALE**

V.

**LYE TOWN**

West Midlands (Regional) League

This Space is Reserved for the ...

**CHANCERY GRILL**

THE POTTERIES MOTOR TRACTION CO. LTD.

WOODHOUSE STREET, STOKE-ON-TRENT

**MIDLAND INTERMEDIATE LEAGUE**

**Cup Competition**

1965/66	Opponents	F.	A.
Aug. 28	Derby County ...	A	1 4
Sept. 18	Nottingham Forest ...	H	2 6
25	Leicester City ...	A	0 5
Oct. 2	Derby County ...	H	3 0
16	Nottingham Forest ...	A	0 2
23	Leicester City ...	H	3 3
30	Stoke City ...	A	
Nov. 6	Stoke City ...	H	

**League Competition**

Nov. 13	Birmingham City	H
20	Coventry City ...	A
27	Aston Villa ...	H
Dec. 4	Leicester City ...	A
11	Derby County ...	H
18	Shrewsbury Town	H
Jan. 1	Walsall ...	H
8	Stoke City ...	A
15	West Brom. A. ...	H
22	Shrewsbury Town	A
29	Stoke City ...	H

**MIDLAND INTERMEDIATE LEAGUE**

1965/66	Opponents	F. A.
Feb. 19	Nottingham Forest	H
26	Nottingham Forest	A
Mar. 5	Coventry City ...	H
12	Aston Villa ...	A
19	Leicester City ...	H
26	Derby County ...	A
April 2	Birmingham City ...	A
16	Walsall ...	A
23	West Brom. A. ...	A

FOR ...  
ENGINEERING SUPPLIES  
and  
ELECTRICAL CONTRACTING

**FRANCIS W. HARRIS**

& CO. LTD.

Moorland Road, BURSLEM

Stoke-on-Trent

Phone : Stoke-on-Trent 87181 (4 lines)

**ADAMS & FREEMAN**  
ESTATE AGENTS

21 HOPE STREET, HANLEY

Phone : Stoke-on-Trent 26052 & 2502

Consult us for Properties in and  
around the Potteries  
New Property Specialists  
Mortgages Arranged

Also 184/6 Uttoxeter Rd., Blythe Bridge

Phone : Blythe Bridge 3234

ESSO LUBRICATION SERVICE

BATTERIES, TYRES and ACCESSORIES

**CLAYTON SERVICE STATION**

(Proprietor DENNIS REDFERN)

CRYPTON PERFORMANCE TUNING

VEHICLE RECOVERY SERVICE

CLAYTON ROAD - NEWCASTLE - STAFFS.

TELEPHONE 63189

A.A.

DAY AND NIGHT SERVICE

R.A.C.

HYGENA, ELIZABETH ANN, EASY CLEAN AND OTHER SINK UNITS  
PARKRAY, QUEEN, CRANE BOILERS

A WONDERFUL SELECTION OF BOILERS at ...

**"THE WAREHOUSE"**

SANITARY SUPPLY CO. LTD CANNON STREET, HANLEY

Telephone : STOKE-ON-TRENT 23627/8

**J. LEWIS (Machinery) LTD**

89 WATERLOO ROAD

BURSLEM

Telephone : Stoke-on-Trent 85211/2/3

FOR ALL  
CONTRACTORS' PLANT  
SALES, SERVICE  
AND HIRE

**Sambrook [Burslem]**

LIMITED

BUILDERS & CONTRACTORS

PLUMBERS & DECORATORS

TIMBER AND BUILDING

MATERIAL MERCHANTS

HAMIL ROAD, BURSLEM

STOKE-ON-TRENT



## PORT VALE SOCIAL CLUB

THE FINEST CLUB IN THE MIDLANDS

### SOCIAL ATTRACTIONS FOR THE WEEK

SATURDAY — October 30th ...

BARRY DUNCAN and the ECHOES

SUNDAY — October 31st ...

GERALD WOOTTEN and BARBARA PARKER

MONDAY ... OLD TYME DANCING to a First Class Trio.

M.C.'s — Mr. & Mrs. Smith

TUESDAY ... SNOWBALL NIGHT, Free members' Draw.

Top Prize — £15/0/0

WEDNESDAY ... MODERN DANCING to the "Moon Glows"

THURSDAY ... CLUB NIGHT.

FRIDAY ... CLUB NIGHT

### COACH TRIP TO OXFORD

SATURDAY, NOVEMBER 13th — Other details later

DON'T FORGET 3d. ON THE BALL TICKETS

Winning Nos. v. Chesterfield:—1st : 005151 ; 2nd : 001818 ; 3rd : 005123

First Class Lounge - Super Cocktail Bar - Snacks always available

M. & B. - Red Barrel - Bass and Worthington Cannister Beer

NEW MEMBERS WELCOMED...

apply to LEN PARTON, Hon. Secretary.

## ALSAGER DEVELOPMENT CO. LIMITED

BUILDING & CIVIL ENGINEERING  
CONTRACTORS

SPECIALISTS IN HIGH QUALITY CONCRETE WORKS  
INDUSTRIAL BUILDING - ROADWORKS - DRAINAGE  
AND HOUSING DEVELOPMENT

HIGH STREET - TALKE PITS - STOKE-ON-TRENT - STAFFS,

Telephone : Kidsgrove 3320

## THOMAS E. TALBOT & SON LIMITED

PLUMBING AND DECORATING CONTRACTORS

LEONARD STREET, BURSLEM

STOKE-ON-TRENT

Telephone : Stoke-on-Trent 88681-2-3

## THOMAS E. TALBOT & SON <sup>(Heating Engineers)</sup> LTD

LEONARD STREET, BURSLEM

STOKE-ON-TRENT

Telephone : Stoke-on-Trent 88681-2-3

### Distinctive Outfitting

Everything in stock for  
the man of good taste

Visit our new bespoke  
Tailoring Department

*Websters*  
(Burslem) LTD.

GENTLEMENS' OUTFITTERS

18 MOORLAND ROAD  
BURSLEM

Established over 50 years

## SHERWINS

for

PIANOS  
ORGANS  
RADIO  
TELEVISION

VALVES  
AMPLIFIERS  
L. P. RECORDS  
EVERYTHING  
MUSICAL

**SHERWINS**

OF HANLEY



**EXCURSIONS**  
*to*  
**AWAY MATCHES**  
*by*



SEE ANNOUNCEMENTS  
IN THE  
**"SENTINEL"**  
AND AT  
BOOKING OFFICES  
TEL. STOKE-ON-TRENT 48811

**GARNERS**

**Newcastle, Staffs. Ltd.**

Newcastles Leading Stockists of  
Pet Foods and Accessories

**SEEDSMEN**

ESTABLISHED 1840

**Merrial Street**  
**Newcastle Staffs.**

Telephones NEWCASTLE 65389 65380

**QUALITY CASTINGS...**

IN ALL  
NON-FERROUS ALLOYS  
also in HIGH DUTY IRON and  
S.G. and S.G. NI-RESIST IRON



from  
**T. M. BIRKETT, BILLINGTON**  
**& NEWTON LTD.**  
**HANLEY and LONGPORT**  
**STOKE-ON-TRENT**

Head Office : HANLEY  
Phone : Stoke-on-Trent 22184

*Buckley*  
*Bros.*

**VOLKSWAGEN**  
**CENTRE**

Talke Road, Chesterton  
Newcastle 51685

=====  
Your own V.W. centre  
with its  
**COMPLETE**  
services