

HAVE YOUR

CENTRAL HEATING

INSTALLED BY

J. A. TILL & CO. LTD.

FLOWERS HILL

BRISLINGTON, BRISTOL 4

Telephone 79875

Approved Installers

OIL FIRING : GAS OR SOLID FUEL

Terms arranged



BRISTOL CITY F.C.

SEASON 1964-65



6^D

Sat. March 13 LUTON TOWN Div. III K.O. 3.0 p.m.

Take Courage



• OFFICIAL PROGRAMME •

F. C. HOLLY

Complete Sports Outfitters

We have fitted out Bristol City F.C.
Bristol Rovers F.C.
English Schoolboys
with all their clothing

Special Discount to Clubs

Send for 16 page List

195a MILTON RD. WESTON-S-MARE

Phone Weston 2859

TRY US FOR "TEAM" SPIRIT

FILWOOD SERVICE STATION

(R. Coles) M.A.A. Member

Filwood Broadway, Knowle,
Bristol 4

Auto Electrical and Mechanical
Engineers

Standard Triumph Dealers

NEW AND USED CARS

H. S. P. MOTOR Co.

Volkswagen Agents

Services & Sales

33 Redcatch Road, Knowle, Bristol 4

TELEPHONE 76592

W. J. KEW (Contractors) LTD.

Building and Public Works
Contractors

**BEDMINSTER DOWN
BRISTOL 3**

PHONE 663091

HOUSES ARE BEING ERRECTED AT . . .
HIGHRIDGE GREEN, CLEVEDON AND
YATTON

THE DOWNS BUILDERS SUPPLY CO. LTD.

Bedminster Down Road, Bristol 3

for your

Decorating Materials
Ironmongery, Hardware
Etc., Etc.

AUTHORISED HOOVER DEALERS

Telephone 663638



"THE GOOD
INTENT"

**BROOMHILL
BRISLINGTON**

for

**Lunch-time Specialities
and Grills**

ENJOY GOOD CHINESE CUISINE
AT HOME
Try "SPECIAL TAKE AWAY PACKS"
from

THE WILLOW CAFE

4 UPTON ROAD, off corner
Raleigh Road, Southville, Bristol 3
Chow Mien, Chow Fan, Prawn or Chicken
or Beef Curry Rice, Tender Steak, Fish
and Chips

Prices from 2/9d. to 4/6d.

Open : Lunch Time Tuesday to Saturday
11.30 a.m. to 2.15 p.m.
Evenings : Monday to Saturday, 7.30 p.m.
to 11.30 p.m.

BRISTOL CITY FOOTBALL CLUB LIMITED

GROUND AND REGISTERED OFFICES

ASHTON GATE, BRISTOL 3

F.A. CUP : Finalists 1908/9, Semi-finalists 1919/20

WELSH CUP : Winners 1933/4

FOOTBALL LEAGUE :

Division I.—1906/7 (runners-up), 1907/8 to 1910/11

Division II.—1901/2 up to 1905/6; 1911/12 up to 1921/22; 1923/24;
1927/28 up to 1931/32; 1955/56 up to 1959/60

Division III.—Champions 1922/23; 1926/27; 1954/55

DIRECTORS

Mr. H. J. DOLMAN (Chairman)

Mr. L. SMART (Vice-Chairman) Mr. A. J. AMOR Mr. W. G. GARLAND
Mr. N. B. JONES Mr. S. F. KEW Mr. R. T. POETON Mr. G. WHITTOCK
Mr. G. W. YOUNG

Manager : Mr. F. FORD

Secretary : Mr. B. C. BUSH

Trainer : LES BARDSLEY

Hon. Medical Officers : Dr. W. BAIN, Dr. T. MILLING

City's Hopes Rise

SIX successive victories have made Bristol City real promotion prospects.

In five weeks the club has risen from ninth place, where they were considered rank outsiders, to fourth.

City's away record makes impressive reading, and well up to promotion standard, with 20 points from 19 matches.

Victories at Exeter on Saturday and Grimsby on Tuesday, brought their number of successes away from home to eight.

Brian Clark scored his 22nd goal of the season in the 1-0 win over Exeter in a hard game.

Goals by Terry Bush and Chuck Drury—his first for the City—backed by a magnificent defensive display, enabled City to win 2-0 at Blundell Park, Grimsby.

This was a particularly fine achievement as Grimsby are always a tough proposition on their own ground.

It was Grimsby's first defeat at home, and they have dropped out of the promotion race after being among the leaders for more than half the season.

The City players have some tough games ahead, including two with promotion rivals, Mansfield Town and Carlisle United.

Both games are away, on March 20th and April 16th, respectively.

Luton Town, today's visitors are experiencing the leanest spell in their history. Only six years ago

OUR AIM IS YOUR SATISFACTION
MAKE YOUR GOAL THE

Ancient Order of Foresters Friendly Society

FULL PARTICULARS OF BENEFITS AND CONTRIBUTIONS
FROM
THE SECRETARY, 3 KING SQUARE, BRISTOL 2

Enjoy your football . . . Enjoy Central Heating in
your home by . . .

A. S. WYATT

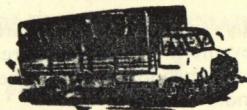
Heating Engineers

62 FOOTSHILL ROAD — HANHAM — BRISTOL

Telephone: 67-1836

S. DELANEY

Commercial Motor Body Builder



Hartcliffe Way, B'tol 3 Tel. 661545

Member of the Vehicle Builders and
Repairers Association

ASHTON VALE COACHWORKS

(A. W. Waterman)

Ashton Vale Road, Ashton, B'tol 3

COACH BUILDERS AND
PANEL BEATERS

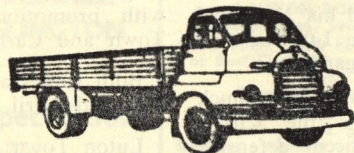
TEL BRISTOL 665370

TAYLOR BROS.

COACH BUILDERS AND MOTOR ENGINEERS

Proprietors :
A. E. and
R. J. TAYLOR

TELEPHONE
673901, 672878
(2 lines)



171
BRYANTS HILL
ST. GEORGE
BRISTOL

PANEL BEATING — SHEET METAL — RECELLULOSING

they were in the First Division, and reached the final of the F.A. Cup.

Luton's fall from grace started in 1960. Until then they had the proud record of never having been relegated.

They went down into the Second Division with Leeds United, at the same time as Bristol City were relegated from the Second Division.

At the end of the 1962-63 season Luton took the plunge into the Third Division with Walsall.

Luton were the first club in the South of England to employ professionals, and they started in the Southern League in 1894.

They were elected to the Second Division of the Football League three years later, but failed to gain re-election in 1900.

After another spell in the Southern League they joined the Third Division in 1920, the Third South a year later, and in 1937 they won the championship.

Luton won their way into the First Division in 1955, when they finished runners-up in Division Two.

Dave Pacey and Ron Baynham, who were members of the side beaten in the Wembley Cup final in 1958-59 by Nottingham Forest by two goals to one, are still with the club.

City won both games against Luton last season: The first meeting between the clubs at Kenilworth Road this season, in October, ended in a goalless draw.

CAR PARKING

We appeal to all our supporters to make sure that they leave their cars in a position which does not cause any inconvenience to other people, particularly those living near the ground.
YOUR CO - OPERATION WILL BE GREATLY APPRECIATED.

The Man in the Middle

MR. HARRY NEW, from Havant, near Portsmouth, is nearing the end of his fifth Season as a Football League Referee.

He graduated via the Portsmouth League, Hampshire League and Football Combination, and became the first Portsmouth man on the League list for more than 30 years when appointed in 1959.

Before reaching the League list he refereed an amateur International match in Wales, an F.A. Amateur Cup semi-final, and was a linesman in the Pegasus v Bishop Auckland Amateur Cup Final in 1951.

Harry New has also officiated as

linesman in the F.A. Cup final between Tottenham Hotspur and Leicester City (1961), a European Cup match between Sporting Club, Lisbon, and D.O.S. Utrecht in Portugal (1958), and Real Madrid v Barcelona in Madrid (quarter-final European Cup, 1960).

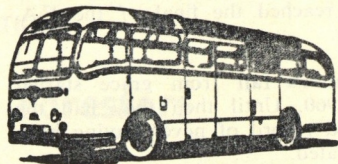
A chartered electrical engineer, he is 37 and is a part-time lecturer at the Portsmouth College of Technology, where he studied to obtain a Graduateship to the Institution of Electrical Engineers. His hobby is bee-keeping.

Travel by
EMPRESS COACHES

4 Colston Street, Bristol 1

Telephone 20650-25443

SPECIAL QUOTATIONS FOR PRIVATE PARTIES



BRISTOL'S PREMIER RESTAURANTS

THE PALM COURT

FULLY LICENSED

47-49 COLSTON ST., BRISTOL 1

Telephone 25656

THE 49 STEPS

FULLY LICENSED

20 CHRISTMAS STEPS, BRISTOL 1

Telephone 28754

Open 10.0 a.m. - Midnight

Morning Coffee - 3 Course Lunches from 3/6d. - Suppers

Luncheon Vouchers accepted

Social Parties and Wedding Receptions catered for

WHEN IN WESTON-SUPER-MARE VISIT OUR BRANCH

"NEPTUNE RESTAURANT"

3 BEACH ROAD

Telephone 1675

The Bridge Motor Engineering

COMPANY LIMITED

SPECIALISTS IN NEW AND USED CARS

Retail Dealers for Ford, Standard, Triumph and Singer
All makes supplied

58 - 62 HAMPTON ROAD, REDLAND, BRISTOL 6

TELEPHONE 3 4 4 8 6

PERFORMANCE — ASSURANCE

cost so little . . . saves so much

Crypton Tune-up Service at

PLAYERS GARAGE LTD.

Pembroke Road, Clifton

TELEPHONE BRISTOL 35474

KICK-OFF with a visit to **SIDNEY SEWARD LTD.**

for your
NEW CAR OR COMMERCIAL

REDCLIFF, BRISTOL 1

Telephones 25713 - 23762

LUTON TOWN—pen pictures

Colin Tinsley, goalkeeper, was born in Middlesbrough. His first club was Grimsby Town, then he played for Exeter City and moved on to Luton in August 1963.

Alan McBain, full-back, comes from Aberdeen. He played for Carlisle United and was signed two seasons ago.

Fred Jardine, full-back, was born in Edinburgh and had two seasons with Dundee before joining Luton at the end of the 1960-61 season. He was at outside-left last season.

Mark Lownds, wing-half, was transferred from Durham in January, 1960.

William Harber, is a former Swindon Town player. He was signed in September.

Dave Pacey, centre-half, is a local born player who was signed in 1956. He has played for England Under 23's against Germany and Italy.

John Reid, left-half, has also played at inside-forward. Luton paid Northampton a big fee for him in 1963. He has also played for Bradford.

David Pleat, outside-right, was born in Nottingham and was signed from Nottingham Forest in August last year.

Ted. Phillips, inside-right, joined Luton recently from Leyton Orient. He was previously with Ipswich Town.

John O'Rourke, centre-forward, was born in Northampton and previously played for Arsenal and Chelsea from whom he was transferred in 1963. He scored 22 goals in his first 23 games. He is a former England Youth international.



DAVE PACEY

Gordon Riddick, inside-forward, is a former apprentice and became a professional in April, 1961.

Thomas McKechnie, outside-left, was born in Glasgow and joined Luton from Rob Roy at the end of the 1960-61 season.

John Bramwell, full-back, is a former Everton player. He was signed in October, 1960.

Graham Caleb, centre-half, was born in Oxford. He started as an apprentice in December, 1961, and became a professional in April, 1963.

A.A. WEBBINGTON HOTEL R.A.C.
Country Club, Loxton, Nr. Axbridge
FORMER MILLIONAIRE'S HOME
NOW THE NIGHTSPOT OF THE WEST
 Just off A38 at Cross approx. 6 miles from
 Weston-super-Mare
 Accommodation all the year round
 Overnight, Residential & Self-Catering Flats
DINNER, DANCING & STAR CABARET
EVERY NIGHT
 For table reservations and details of
 membership please telephone the Secretary
EDINGWORTH 369

Why not meet your friends at
THE OMELETTE AND
COFFEE BAR
Also Steak Bar
67 PARK STREET, BRISTOL 1
 Open daily 10 a.m. - midnight
 Sunday 3 p.m. - midnight
TELEPHONE 24872



Make your goal...
T. RUSSELL
Motor Cycle Specialists
35 Ashton Road Bristol 3
TELEPHONE 665603
 Two Minutes from the City Ground

SMALL'S
FURNISHINGS
at Bristol's Contemporary
Furnishing Store



This is a private enterprise
 store with a personal
 interest in all its customers
 Cash Credit or whichever
 you wish
SMALL'S CORNER
215 NORTH STREET
BRISTOL 3. Telephone 66-3130

Drive to



HOME PLANNING
SHOWROOMS
BRISTOL'S CENTRE FOR

KITCHENS

BATHROOMS

HOME HEAT

THE IRON & MARBLE CO. LTD.
 16A St. Thomas Street, Bristol 1 Telephone 292436/7

BRISTOL CITY

Right

Colours: Red and White

Left

GILSON

FORD—2

BRIGGS—3

DRURY—4

CONNOR—5

LOW—6

SAVINO—7

ATYEO—8

BUSH—9

CLARK—10

SHARPE—11

Linesmen :

Red flag :

W. Webster
 (Torquay)

Yellow flag:

F. J. Bricknell
 (Exeter)

Referee:

H. G. NEW
 (Havant)



RIOCH—11 O'ROURKE—10 PHILLIPS—9 REDDICK—8 PLEAT—7
READ—6 FINCHAM—5 GIBSON—4
JARDINE—3 BARTON—2
TINSLEY

Left

Colours: White Shirts, Black Shorts

Right

LUTON TOWN

Look afresh at your home

★★ If you are thinking about redecoration—inside or out, one room or the whole house—why not have a word with us? With our experience of planning schemes, and as craftsmen in carrying them out, we can give a new look to your decoration expertly, quickly and with the minimum of fuss. If your ideas are ambitious, we welcome them. On the other hand, we look on a limited budget as a challenge to our ingenuity. We will be very happy to submit an estimate, without any obligation on your part.

PETER TEBBIT & SONS LTD
Building and Decorative Specialists

Head Office : WEST ST., BRISTOL 3 Tels. 66-4542 & 66-1175

TERRITORIAL
ARMY

883 (Gloucestershire Volunteer
 Artillery) Battery RA (TA)
has room for volunteers to learn

RADIO
SURVEY
RADAR
DRIVING

in their spare time

Come and see us any
FRIDAY EVENING at the
ARTILLERY GROUND
WHITELADIES ROAD, BRISTOL 8
 (Telephone No. 33533)

JOIN THE GUNNERS

TRAVEL BY

Wessex Coaches

AND BE THERE FOR THE KICK-OFF
TELEPHONE ENQUIRIES 34001

JOIN THE "LINE-UP" at the
PARK SERVICE STATION
 (Proprietor: P. Plumley)
234-244 CHURCH ROAD
ST. GEORGE, BRISTOL 5
Telephone: Bristol 56674

For high pressure lubrication, all makes
 of Tyres Batteries, Accessories supplied

Telephone : Bristol 67-3675
UNITY SERVICE STATION LTD.
 (Directors: B. C. Ryan, B. G. Ryan)



Any make of Car supplied
 Complete Overhauls
338 TWO MILE HILL ROAD
KINGSWOOD, BRISTOL

Large or Small Orders Supplied. Tel Chewton Mendip 378/379

F. A. SMITH Horticultural Supplier

HORTICULTURAL WORKS, GREEN ORE, NEAR WELLS
SOMERSET

Specialist in MENDIP HILL GRASS TURF FOR LAWNS - SOMERSET ROTTED TURP
MOULD - TOP SPIT SOIL - STERILISED LOAM AND COMPOSTS TO JOHN INNES
FORMULA

PHONE 7-8167

WICK ROAD GARAGE

102 WICK ROAD
BRISLINGTON, BRISTOL 4

Motor Engineers

Repairs and Accessories

FRESH FRUIT & VEGETABLES



Daily
Deliveries
TEL. 25654
Greengrocer
Fruiterer
Florist

W. P. McCARTHY

11 WARING HOUSE
REDCLIFFE HILL, BRISTOL 1

TELEPHONE 76901

AUDLEIGH GARAGE

(Proprietor: J. Willcox)

KNOWLE TERMINUS, WELLS RD.
BRISTOL 4

M.T.A. M.A.A. MEMBERSHIP

Panel Beating, Welding

Re-cellulosing and Signwriting

STEAM CLEANING AND UNDERSEALING

ELECTRICITY

— see —

R. E. SUTTON

WEST TOWN, Near BRISTOL

Tel. Flax Bourton 2314

Also

363 Locking Road, Weston-s-Mare

INSTALLATIONS AND REPAIRS TO ALL
ELECTRICAL APPLIANCES
ALL TYPES OF MOTORS REWOUND



PINNOCK'S

Waring House
Redcliffe Hill
Bristol 1

*

YOUR ...

Newsagents . Tobacconists
Stationers . Confectioners

YATTON MOTORS

MOTOR ENGINEERS

HIGH STREET

YATTON, Near BRISTOL

Telephone: Yatton 2152

BRISTOL CITY F.C. SUPPORTERS' CLUB

ASHTON GATE BRISTOL 3 TELEPHONE 665554



Chairman: Mr. J. BEALING

Vice-Chairman: Mr. A. H. RICHARDS

Secretary: Mr. A. C. FOWLER

Assistant Secretary: Mrs. B. FUDGE

Treasurer: Mr. L. CUTMORE

OUR congratulations go to John Atyeo on reaching his 600th game for the Club when they played at Grimsby on Tuesday. A truly remarkable record of one club loyalty. It is our sincere wish that John will be playing in many more games yet.

The team with six consecutive wins are now back with a glorious chance of promotion and next Saturday's match at Mansfield is a most important one. To encourage supporters to travel to give the team vocal support the Club is operating a very cheap trip departing from the ground at 7 a.m.

Bookings can be made after today's game at the office situated near the ringside entrance, daily in the Club offices or on Thursday and Friday evenings in the Clubroom.

Agents are urgently required in the Filton and Horfield area for our lottery.

A limited number of tickets are available for the England v. Scotland International to be played at Wembley on April 10th. Members who

want to participate in the ballot for these tickets must make their application on the official form which can be obtained at the Club offices. Closing date: Tuesday, March 30th.

BRISTOL CITY RECORDS

APPEARANCES

John Atyeo	33	Peter Hooper	6
Alec Briggs	35	Gordon Low	42
Terry Bush	33	Gordon Parr	21
Brian Clark	42	Roger Peters	34
Jack Connor	39	Ray Savino	32
Jantzen Derrick	11	Gerald Sharpe	15
Chuck Drury	8	Mike Thresher	7
Tony Ford	42	Bob Williams	18
Mike Gibson	42		

GOALSCORERS

John Atyeo	14	Gordon Parr	1
Brian Clark	22	Roger Peters	5
Terry Bush	13	Ray Savino	2
Chuck Drury	1	Gerald Sharpe	8
Tony Ford	5	Bob Williams	4
Peter Hooper	2	Own goals	3
Gordon Low	1		

ABC BEDMINSTER

SUNDAY, 14th March for four days

DR. NO (A)

SEAN CONNERY URSULA ANDRESS

GERONIMO (A)

Chuck Connors Pat Conway

Thursday, 18th March for three days

FROM RUSSIA WITH

LOVE (A)

SEAN CONNERY DANIELA BIANCHI

THE GREAT ST. LOUIS

BANK ROBBERY (A)

Steve McQueen

BRISTOL ODEON

FOR A SPECIAL SEASON

March 14th

LORD JIM (U)

PETER O'TOOLE JAMES MASON

CURT JURGENS ELI WALLACH

PAUL LUCAS

Prices: Circle 10/6, 8/6. Children 5/-, 4/-
Stalls 6/6, 5/-, Children 3/6, 2/6
O.A.P. 2/6, 3/6 stalls matinee Mon.
to Fri. (except Bank Holidays).

Seats bookable for evening performances only.

Children's reduced prices Mon. to Fri.
(except Bank Holidays).

FIXTURES 1964-65

Football League—Division III

1964	August	F. A.	A.	1965
22—Scunthorpe	A	2	5	5,520
25—BARNLEY	H	5	1	10,491
29—WALSALL	H	5	1	9,478
September				
5—Watford	A	2	2	9,418
8—SOUTHERN UNITED	H	4	0	11,738
12—WORKINGTON	H	5	0	10,536
14—Southend United	A	4	0	8,675
19—Hull City	A	2	3	7,485
23—Carlisle, F.L. Cup 2nd Rd.	A	1	4	10,055
26—GILLINGHAM	H	1	2	11,556
29—READING	H	2	0	11,981
October				
3—Bristol Rovers	A	1	1	25,370
7—Reading	A	1	1	11,120
10—COLCHESTER UNITED	H	1	1	9,983
13—QUEEN'S PARK RAN.	H	2	0	11,133
17—Port Vale	A	2	1	5,564
19—Queen's Park Rangers	A	0	1	5,578
23—CARLISLE UTD.	H	1	2	10,302
28—Oldham Athletic	A	3	7	8,013
31—Luton Town	A	0	0	5,385
November				
3—Barnley	A	2	1	3,768
7—MANSFIELD TOWN	H	1	1	9,653
14—BRIGHTON (F.A. Cup)	H	1	0	12,616
21—PETERBORO' UNITED	H	3	1	9,222
28—Bournemouth & Bos.	A	2	1	9,016
December				
5—Bournemouth & Bos. (F.A. Cup)	A	3	0	10,592
12—SCUNTHORPE UNITED	H	2	2	8,387
19—Walsall	A	4	2	5,213
26—Brentford	A	1	2	16,065
1965				
January				
2—WATFORD	H	1	1	10,758
9—(3) SHEFFIELD UTD.	H	1	1	20,091
11—Sheffield United (F.A. Cup 3rd round replay)	A	0	3	27,688
15—Workington	A	0	1	3,380
23—HULL CITY	H	1	2	14,131
30—(4) EXETER CITY	H	1	1	8,450
February				
6—Gillingham	A	0	2	10,927
13—BRISTOL ROVERS	H	2	1	23,052
20—(5) Colchester United	A	3	2	2,898
27—PORT VALE	H	3	0	8,552
March				
2—BRENTFORD	H	3	2	11,152
6—(6) Exeter City	A	1	0	7,359
9—Grimsby Town	A	2	0	5,748
13—LUTON TOWN	H			
20—Mansfield Town	A			
26—GRIMSBY TOWN	H			
April				
3—Peterboro' United	A			
9—BOURNEMOUTH & BOS.	H			
16—Carlisle United	A			
19—Shrewsbury Town	A			
20—SHREWSBURY TOWN	H			
24—OLDHAM ATHLETIC	H			
May				
1—(F.A. Cup Final)				

Western League

1964	August	F. A.	A.	1965
22—BRIDGWATER TN.	H	1	2	
26—Bideford	A	1	2	
29—Salisbury	A	4	1	
September				
1—WESTON-S-MARE (Somt. Prof. Cup)	H	5	0	
5—WELTON ROVERS	H	0	2	
9—Torquay Utd. Res.	A	1	2	
12—Yeovil Town Res.	A	2	1	
15—MINEHEAD	H	3	1	
19—POOLE TOWN RES.	H	5	1	
26—Bridport	A	3	4	
30—Poole Town Res.	A	4	3	
October				
3—BATH CITY RES.	H	1	0	
6—FROME TOWN (Som. Prof. Cup 2nd Rd.)	H	2	1	
10—Dorchester Town	A	2	1	
17—WEYMOUTH RES.	H	0	5	
24—Glastonbury	A	2	3	
27—BIDEFORD (Alan Young Cup 1st leg)	H	0	2	
31—CHIPPENHAM TN.	H	1	4	
November				
7—Frome Town	A	5	1	
14—Andover	A	4	2	
28—BIDEFORD	H	1	0	
December				
5—ANDOVER	H	4	3	
12—Barnstaple Town	A	1	3	
19—SALISBURY	H	3	1	
26—EXETER C. RES.	H	2	1	
1965				
January				
2—Welton Rovers	A	2	6	
16—YEOVIL TN. RES	H	7	0	
23—Bath City Res.	A	6	1	
27—Yeovil Town (Som. Prof. Cup SF)	A	0	1	
30—Minehead	A	1	3	
February				
6—PORTLAND UNITED	H	1	1	
13—Portland United	A	2	1	
20—BRIDPORT	H	3	0	
27—Weymouth Res.	A	2	0	
March				
9—GLASTONBURY	H	4	1	
13—Exeter City Res	A			
20—FROME TOWN	H			
24—Bridgwater Town	A			
27—Chippenham Town	A			
April				
1—TAUNTON	H			
3—DORCHESTER	H			
7—Weston-s-Mare	A			
16—TORQUAY U. RES.	H			
17—WESTON-S.-MARE	H			
19—Taunton	A			
27—Prov. BARNSTAPLE	H			

© These fixtures are the copyright of the Football League Ltd., and are printed by their permission under Licence No. 2. They must not be reproduced in whole or in part without permission of The Football League Ltd.

BRISTOL BANQUETING COMPANY

ARNO'S COURT — 470 BATH ROAD — BRISTOL 4

for your catering requirements

BANQUETS, DANCES, WEDDING RECEPTIONS, TRADE SHOWS, ETC. ETC.

TELEPHONE 79654

REDCLIFFE SERVICE STATION

Proprietor: IAN D. SWIFT

THREE QUEENS LANE BRISTOL 1

TEL. BRISTOL 27917

WE GIVE S. & H. PINK STAMPS

TRY OUR ELECTRONIC TUNE-UP SERVICE at

REDLAND GROVE GARAGE



(R. D. Blackwell)

MERIDIAN ROAD, REDLAND BRISTOL 6. Tel. Bristol 44800

MOTOR ENGINEERS

TOWN'S TALK

1 of the Best Restaurants

2 Give you the

Xcellent Cuisine and Service you require

DINING, WINING & DANCING

For Table Reservations

FULLY LICENSED FREE HOUSE

BRIDGWATER RD., BRISTOL 3



Long Ashton 2109

RUMSEY LIMITED

55/61 Victoria Street Bristol 1



Also at 414/424 GLOUCESTER ROAD BRISTOL 7 and HIGH STREET KINGSWOOD

DISTRIBUTORS

Telephone: Bristol 294441 (10 lines)

1 good way
2 meet your
Xact motor-cycle needs

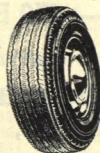
TAYLOR'S M/CYCLES LTD.

300 North Street — Bedminster
Telephone 662130
SPECIALISTS IN LOW-PRICED
MOTOR-CYCLES
for the working man

Phone : Bristol 665583

The Whitehouse Tyre Service

(Prop.: C. W. Buck)



WHITEHOUSE LANE
BEDMINSTER
BRISTOL 3

for new Tyres, Remoulds
Good Second-hand Tyres
Wheel-Balancing and
Car Batteries Trade Terms

HOURS :
9-6 DAILY 10-2 SUNS

THE PERFECT CENTRE

for

TYPING, DUPLICATING AND
CIRCULARISING

OFFICE ASSISTANCE BUREAU

Secretarial Service

25 Orchard Street, Bristol 1
(2 MINUTES CENTRE)

Telephone . . 293101 (2 Lines)

YOU'LL SCORE with

RAY JENKINS

GENERAL



BUILDER
DECORATOR
CARPENTER

66 Ridgeway Road, Fishponds
BRISTOL 65-3285

*While you are "away" shopping, why not have your car
serviced before returning "home" at*

STOKES CROFT SERVICE STATION

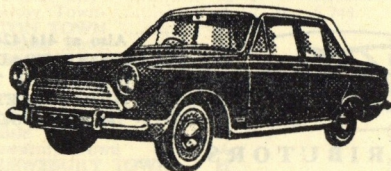
(J. Wilkinson)

5-7 CITY RD., BRISTOL 2 Telephones 24735 & 40036

For National Benzole, Petrol, Oil and Derv open from . . .
7.30 a.m. until 10.0 p.m.

HOME or AWAY

you're bound to score—with a NEW FORD from



L. R. BENCE

& CO. LTD.

Westways Garage
MARKSBURY

Nr. Bath

MARKSBURY 391 and 392