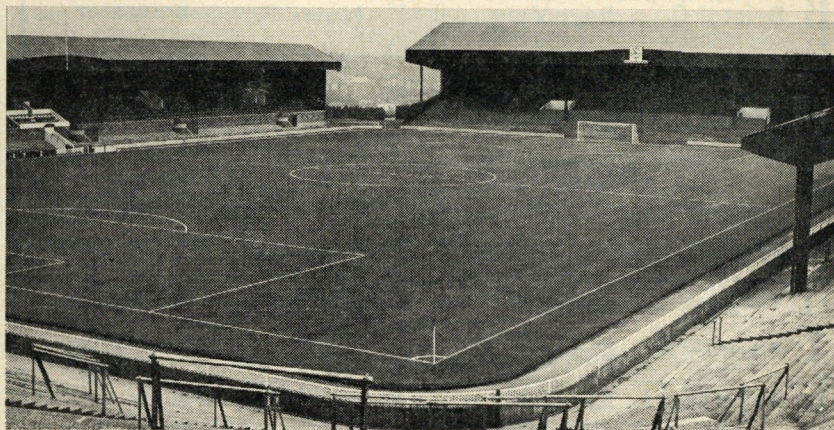


WE PUT NEW LIFE INTO YOUR CLOTHES  
TEL. 51001 - 53017 — WE ARE AT YOUR SERVICE  
24 HOURS THROUGH OUR ANSAPHONE SERVICE

**CITY**  
*The NEW-LIFE Cleaners*



**HULL CITY A.F.C. LTD**



**LUTON TOWN**

**SATURDAY, 27th FEBRUARY, 1965**

**Kick-off 3-0 p.m.**

**SUPPORT YOUR LOCAL INDUSTRY**

*Ask your repairer for*

**ManTan** **SOLE LEATHER**

**The Leather with the guaranteed wear**

**THOS. HOLMES & SONS LIMITED SCULCOATES HULL**

**OFFICIAL PROGRAMME 6<sup>D</sup>**



Full details of all the properties we have for sale are contained in our Weekly Illustrated Digest, which can be obtained, free of charge, from any one of Our Offices, by post, or from the containers in the front porches after hours.

## WM. BRUSBY & CO.

Estate Agents, Mortgage Brokers

33 PERCY STREET, HULL 23053

Branches: Hornsea 173      Beverley 81624  
Withernsea 2486      Kirkella 59904  
York 55298

CONSULT

## P. WILLOUGHBY LTD.

for Contract Furniture  
and Upholstery

35/36 Pryme Street, HULL.

Telephone: 29161

## SCOREBOARD

<b>A</b> Barnsley.....	<b>Exeter C.</b> .....	<b>N</b> Man. Utd.....	<b>Wolves</b> .....
<b>B</b> Bristol C. ....	<b>Port Vale</b> .....	<b>P</b> Notts' F.....	<b>Leicester</b> ....
<b>C</b> Gillin'ham.....	<b>Carlisle U.</b> .....	<b>Q</b> Sheff. Utd.....	<b>Blackburn</b> .....
<b>D</b> Reading.....	<b>Bristol R.</b> .....	<b>R</b> Stoke City.....	<b>Chelsea</b> .....
<b>E</b> Shre'bury .....	<b>Brentford</b> .....	<b>S</b> Tottenham.....	<b>Leeds Utd.</b> .....
<b>F</b> Southend .....	<b>Oldham A.</b> .....	<b>T</b> West Brom.....	<b>Aston Villa</b> .....
<b>G</b> Walsall .....	<b>Peterboro'</b> .....	<b>U</b> West Ham.....	<b>Liverpool</b> .....
<b>H</b> Watford.....	<b>Grimsby</b> .....	<b>V</b> Hudd'field.....	<b>Man. City</b> .....
<b>J</b> Birming'm.....	<b>Sheff. Wed.</b> .....	<b>W</b> Midd'bro' .....	<b>Cr. Palace</b> .....
<b>K</b> Burnley .....	<b>Arsenal</b> .....	<b>X</b> Newcastle.....	<b>Bury</b> .....
<b>L</b> Everton .....	<b>Blackpool</b> .....	<b>Y</b> York City .....	<b>Aldershot</b> .....
<b>M</b> Fulham .....	<b>Sunderland</b> .....	<b>Z</b> Hudd'field.....	<b>Hull K. R.</b> .....

## RICHARDSON (Hull) TRANSPORT CO.

PICKERING ROAD HAULAGE LTD.

THE HULL-LONDON TRUNK SERVICE

which has been established for 30 years

TWICE WEEKLY SERVICE TO SOUTHAMPTON

82-86, PICKERING ROAD, HULL.      Tel. 52216 (3 lines)

also at

12a JAMAICA ROAD, LONDON, S.E. 16      Tel. BER. 5341/2  
Warehousing accommodation in Hull

## Hull City Association Football Club Ltd.

BOOTHFERRY PARK, HULL

Telephone 52195-6

Directors:

Chairman: HAROLD NEEDLER

G. H. NEEDLER

S. T. KERSHAW, M.B.E., J.P.

Manager: C. S. BRITTON

Vice-Chairman: R. E. BUTTERY

JOHN NEEDLER

G. T. RIGNALL

Secretary: J. B. ADAMSON

### CLUB MATTERS

These days when we seem to hear so much about supporters of football clubs misbehaving when travelling by rail to see their team play at away matches; it is our pleasure to print the following letter received by our Manager from the Station Master of Carlisle station.

Station Master, British Railways,  
Citadel Station, CARLISLE.

"Dear Sir,

In my capacity it was my function to receive two special trains from Hull to Carlisle on Saturday, 20th February, 1965 and in view of the considerable controversy which has taken place in regard to football special trains in England and Scotland, I think it would only be right to say to you that it was a privilege and pleasure to deal with your approximately 900 supporters. They were a very well behaved crowd, they were exuberant, and rightly so, but the trains were a credit to them and it was a privilege and pleasure to deal with them.

I feel that it is only right to pass on these comments and at the same time thank you for a most enjoyable game which I appreciated very much and I hope we see each other in the second division.

Yours faithfully,

J. S. LESLIE, *Stationmaster.*"

Our comments? Simply, to all our supporters concerned, thank you for once again upholding the good name of the club.

### Our Visitors:

Today it is our pleasure to welcome the Luton Town Officials, Players and supporters to our ground. Since 1958/59 when they were beaten F.A. Cup Finalists, Luton Town seem to have had more than their fair share of football's misfortunes. In 1959/60 they were relegated from Division One, and at the close of season 1962/3 entered the Third Division. Today they are again involved in a struggle to avoid further relegation and therefore the points at stake this afternoon are of equal importance to the 'Hatters' as to us, though of course for different reasons. This will be the 8th time Luton have visited us for a Football League match. The most recent meeting between Luton and ourselves was on the 17th October last year when we were the winners at Kenilworth Road ground by 3 goals to 1.

## FOR CANCER RESEARCH IN YORKSHIRE...

SUPPORT THE

## British Empire Cancer Campaign for Research

(HULL COMMITTEE)

Hon Treasurer: Mr. J. W. WATHEN, MIDLAND BANK, LTD., 32 SILVER STREET, HULL

This Space kindly donated by

Wally Palmer, 5/7 Division Road, Hull, Yorkshire.



Tel. 52214 Open Weekdays 9a.m.-9p.m.

**P. J. Saville**

621 ANLABY ROAD,  
HULL

**MOTOR-CYCLE SALES,  
REPAIRS & SERVICE**

*Most Second-Hand Spares  
available.*

**Hire - A - Car**

FROM

*P. J. Saville*

621 ANLABY ROAD,  
HULL.

Telephone 52214

COMPETITIVE RATES

**HAWKER SIDDELEY AVIATION LTD.**

**HAWKER BLACKBURN DIVISION**

**BROUGH,  
YORKSHIRE.**

*require the following grades of labour:-*

**SKILLED FITTERS  
SKILLED MACHINISTS  
SKILLED SHEET METAL WORKERS  
SKILLED COPPERSMITHS  
SKILLED ELECTRICIANS**

There are also vacancies for Semi-Skilled Fitters and Semi-Skilled Machinists.

Men with experience are preferred, but training will be given to suitable applicants.

*Day and Night Shift Working.*

*District rate piece work and overtime.*

*Assisted travel from surrounding districts.*

*Canteen and Welfare facilities.*

*Applications please to the Personnel Office at the above address.*

**Boddy's Luxury Tours**

Excursions starting from 70 MORRILL STREET, HULL. Tel. 31388

DAY TOURS INCLUDE:

**LAKE DISTRICT : NEW BRIGHTON : SOUTHPORT  
MORECAMBE : STRATFORD-on-AVON : HARROGATE  
The DUKERIES : REDCAR : MATLOCK : MYSTERY TOURS**

Passengers may be picked up at Fiveway's Boothferry Road and Haworth Arms, Beverley Road, if on line of route.

**BODDY'S MOTORS**

**COACHES FOR  
PRIVATE HIRE**

APPEARANCES AND GOAL SCORERS TO DATE: 20th FEBRUARY, 1965.

1ST XI—Maximum Possible: 34 League; 3 F.A. Cup; 2 F.L. Cup. Total 39 matches.

Goals: League 70; F.A. Cup 6; F.L. Cup 1. Total 77

Player	League		F.A. Cup		F.L. Cup		Total	
	A.	G.	A.	G.	A.	G.	A.	G.
DAVIDSON, A.	34	1	3	—	2	—	39	1
McSEVENEY, J.	34	13	3	2	1	—	38	15
SUMMERS, G.	33	1	3	1	1	—	37	2
COLLINS, L.	32	1	3	—	—	—	35	1
MILNER, M.	31	—	3	—	—	—	34	—
CHILTON, C.	28	22	3	—	1	—	32	22
BUTLER, D.	22	—	3	—	2	—	27	—
HENDERSON, R.	23	6	1	—	2	—	26	6
SWAN, M.	21	—	3	—	2	—	26	—
WILKINSON, W.	22	3	2	2	2	1	26	6
CLARKE, D.	16	4	1	—	1	—	18	4
WAGSTAFF, K.	14	14	2	—	—	—	16	14
GARVEY, B.	12	—	—	—	1	—	13	—
WILLIAMS, M.	13	—	—	—	—	—	13	—
HEATH, T.	7	—	2	1	—	—	9	1
YOUNG, R.	8	1	1	—	—	—	9	1
BUTLER, I.	8	1	—	—	—	—	8	1
CORNER, N.	3	2	—	—	2	—	5	2
FEASEY, P.	3	—	—	—	2	—	5	—
HOUGHTON, K.	5	1	—	—	—	—	5	1
SHARPE, L.	2	—	—	—	2	—	4	—
RAFFERTY, R.	2	—	—	—	—	—	2	—
SIMPSON, C.	1	—	—	—	—	—	1	—
McMILLAN, E.	—	—	—	—	1	—	1	—

JUNIOR XI APPEARANCES AND GOAL SCORERS TO DATE, 20th FEBRUARY

Matches: League 21; League Cup 4; F.A. Youth Cup 4; Total 29

Goals: League 68; League Cup 15; Youth Cup 16; Total 99

Players	League		League Cup		F.A. Youth Cup		Total	
	A.	G.	A.	G.	A.	G.	A.	G.
GREENWOOD, P.	21	—	3	—	4	—	28	—
HART, J.	20	1	4	—	4	—	28	1
DAVIDSON, I.	19	1	4	—	4	—	27	1
HARTLEY, K.	20	—	3	—	4	—	27	—
INGRAM, G.	18	12	4	1	4	2	26	15
KNUTSEN, G.	18	19	4	5	4	5	26	29
BEARDSLEY, D.	18	2	4	—	3	—	25	2
LILL, D.	17	10	4	4	3	—	24	14
ANDREW, P.	14	15	4	3	4	5	22	23
PETTIT, R.	14	—	2	—	3	—	19	—
LORD, M.	11	3	2	1	4	4	17	8
SHEPHERD, J.	11	—	1	—	—	—	12	—
BURTON, T.	4	—	3	—	2	—	9	—
CHAMPLAIN	7	—	—	—	—	—	7	—
LEES, N.	6	3	—	—	1	—	7	3
PARKER, M.	4	2	—	—	—	—	4	2
BELL, J.	1	—	1	—	—	—	2	—
McMAHON, K.	2	—	—	—	—	—	2	—
SIMPSON, K.	2	—	—	—	—	—	2	—
BRIGGS, B.	1	—	—	—	—	—	1	—
FISHER, L.	1	—	—	—	—	—	1	—
MALLORY, C.	1	—	—	—	—	—	1	—
SPENSLEY, D.	1	—	—	—	—	—	1	—
TATHER, S.	—	—	1	—	—	—	1	—
OWN GOAL	—	—	—	1	—	—	—	1

Continued on page 14

**HULL CITY AUXILIARY GROUP LOTTERY**

**WINNING NUMBERS FOR WEEK No. 199**

16141	8794	11709	5978	6055	10211
10586	13900	9859	14361	9730	5964
18098	12625	3010	4599	16252	14127
1017 (£5)	7653 (£5)	2539 (£5)	15148 (£5)	2127 (£5)	15432 (£5)
			17258 (£50)		

**ARE YOU A MEMBER ?  
IF NOT, WHY NOT ?**



## NIGHTLY TRUNK SERVICE

BETWEEN

## HULL and GLASGOW

Connecting Services to all parts of Scotland and also to E. Yorkshire and N. Lincolnshire

### HULL & GLASGOW ROAD CARRIERS LTD.

HULL OFFICE & DEPOT  
TRANSPORT HOUSE,  
CLARENCE STREET  
Tel. 32902 3 lines

GLASGOW OFFICE & DEPOT  
TENNANT STREET  
Tel. BELL 4699-2573

## THOMPSON of HULL LTD.

## Vauxhall Main Dealers

Motor Cycles · Mopeds · Scooters—New and Second Hand  
Always in Stock at

## KEN RICHIE (Hull) LTD.

66/70 PRINCES AVENUE · HULL

Look for our Bargains · Special Terms Arranged  
Tel. 43761 After Hours 76181

All types of  
Interior and  
Exterior  
Decorating

Member of the National Federation of Master Painters

## T. W. AITCHISON

PAINTER AND DECORATOR

8 TWEED GROVE (Shannon Road)

HULL

Telephone 75142

Office & Factory  
Contracts  
undertaken

### F.A. Youth Cup:

In the 5th Round of this competition our boys have to travel once again, this time to Roker Park to meet the Sunderland boys. The match has been arranged for Wednesday 3rd March and the kick-off will be 7.30 p.m.

It was hoped of course that after being away in the four previous rounds we should have the pleasure of seeing the boys play before their own supporters but it was not to be. All we can do is, as we have done in the past, wish our boys the very best of luck and hope that good fortune will continue to be their travelling companion.

### PEN PICTURES OF LUTON TOWN PLAYERS

**COLIN TINSLEY** (*Goalkeeper*). Born at Middlesbrough, his first Club being Grimsby Town, then on to Exeter City before joining Luton in August, 1963. He made several appearances in the First Team last Season.

**ALAN McBAIN** (*Right Full-back*). Born in Aberdeen. Played for Carlisle. He attracted our Manager's attention and was transferred to Luton in exchange for J. Lornie and A. Ross. A very sound and capable defender.

**FRED JARDINE** (*Left Full-back*). Born in Edinburgh. Played for Dundee for 2 Seasons before coming to Luton at the end of Season 1960-61. Played as an outside-left last Season, was successfully played as a Full Back.

**BOB RILEY** (*Right Half-back*). Was born near Leicester for whom he played before coming to Luton in July, 1964. Is the aggressive type of Wing Half who likes to get his attack going quickly.

**DAVID PACEY** (*Centre Half-back*). Born in Luton, signed for the Club in 1956. Has played for the F.C. versus the R.A.F. and was also a member of the England under 23 team against Germany and Italy. Very strong player with a liking for getting among the goalscorers.

**JOHN REID** (*Left Half-back*). Previously played for Bradford and Northampton to whom we made a substantial transfer fee in November, 1963. Has settled down well at Luton. He is a tireless and energetic worker.

**BILLY HAILS** (*Outside Right*). Billy joined us from Northampton in exchange for Harry Walden during the Close Season. Has had spells with Lincoln and Peterborough also. Is a fast-raiding type of winger who also knows where the goal lies.

**MICK FORSYTH** (*Inside Right*). He is a local boy who joined us in 1961 straight from school where he represented the Town team. Has progressed in our Youth Team and signed Professional in January 1964. Can play in several Forward positions and has a quick eye for goals.

**JOHN O'ROURKE** (*Centre Forward*). Was previously with Arsenal and Chelsea from whom we signed him on a Free transfer in December, 1963. He immediately made his mark at Luton and scored 22 goals in 23 League appearances for us. He also has played for London School Boys and the England Youth Team.

**GORDON RIDDICK** (*Inside Left*). Turned Professional in April, 1961 following a short period of Apprenticeship. Tall, with good ball control and a very good shot, much is expected of this lad as he gains more experience. Has already made several First Team games.

**THOMAS McKECHNIE** (*Outside Left*). Born Glasgow and came here direct from Rob Roy (Scotland) at the end of Season 1960-61. Played consistently in the First Team in the past 3 Seasons, except when injury prevented him from playing.

### Pre-Match and Interval Music:

The records used in our musical programme today have been kindly supplied by, and are obtainable from, Sydney Scarborough's, T.V., Record and Radio Dealers, under the City Hall.





# NEWBOULD'S

BREAD AND CONFECTIONERY

OVER 1200 SHOPS SUPPLIED IN HULL AND DISTRICT

Always  
ask for:

**HULL  
BREWERY  
ALES**



"The Sign of  
Good ale"

R

HULL CITY 3

Colours—Amber & Black

L

WILLIAMS

2  
DAVIDSON

3  
BUTLER, D.

4  
COLLINSON

5  
MILNER

6  
SUMMERS

7  
McSEVENEY

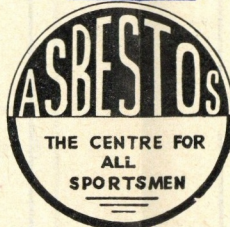
8  
WAGSTAFF  
Scored 1

9  
CHILTON  
Scored 1

10  
HENDERSON  
Houghton Scored 1

11  
BUTLER, I.

Referee — Mr. C. F. DUXBURY  
(Preston)



Linesmen —  
Amber Flag—Mr. B. HUTCHINSON  
Red Flag—Mr. L. A. CUSSONS

11  
McKECHNIE

10  
RIDDICK

9 Scored 1  
O'ROURKE

8  
PHILLIPS

7  
PLEAT

6  
REID

5  
PACEY

4  
GIBSON

3  
JARDINE

2  
McBAIN

TINSLEY

LUTON TOWN 1

Colours—Black & White

L

R

**J. J. R. HUBBARD**

ESTATE AGENTS  
INSURANCE & MORTGAGE  
BROKERS

Local Agents Leeds Permanent  
Building Society

**650 ANLABY RD., HULL**

Telephone 55064 & 506943

Consult us whether selling or  
buying

PROPERTIES MANAGED  
RENTS COLLECTED  
MORTGAGES ARRANGED

Members of the R.T.R.A.

**HOWDENSHERE  
ELECTRICAL  
CONTRACTORS  
LTD.**

Radio and Television Engineers

Tel. Brough 667233 (2 lines)

**ELLOUGHTON  
BROUGH, Yorks.**

and at  
**LOW STREET, N. FERRIBY**  
Tel. 87603

**FOR CANCER RESEARCH IN YORKSHIRE . . .**

SUPPORT THE

**British Empire Cancer Campaign for Research**  
(HULL COMMITTEE)

Hon. Treasurer: Mr. J. W. WATHEN, MIDLAND BANK, LTD., 32 SILVER STREET, HULL.

This Space kindly donated by

**Ambrose Brown, 80a New Cleveland Street, Hull**

**REDIFFUSION**

Wired and Aerial Sets fully switchable for 405/625 lines  
**PLUS Maintenance Service at its best**

**Ask for a FREE DEMONSTRATION**

151/159 BEVERLEY ROAD, HULL - TELEPHONE No. 43131



# BROADY • HULL

**CASTINGS**  
IN ALL NON - FERROUS METALS  
**WELDING**  
INCLUDING ARGON - ARC WELDING

**WILLIAM BROADY & Son Ltd.**

TELEPHONE: 29894      ENGLISH STREET      TELEGRAMS: 'Broady'  
HULL

## CONNOR & GRAHAM, LTD.

Private Hire Coaches supplied for all Occasions  
TEL. SPURN POINT 236 ★ EASINGTON  
Nr. HULL

## GREEN ARROW GARAGE LIMITED

Volkswagen 100%  
Main Agents  
Cars and Commercials  
Tel. 642124  
Private 668315  
BOOTHFERRY ROAD • HESSLE • E. Yorks.



**Skeltons**  
Yorkshire Curd  
Cheesecakes

Made from the original recipe  
handed down through 150 years

Obtainable only from  
**Skeltons Bakery Shops**

### FOOTBALL LEAGUE DIVISION 3

1964	F. A.
Aug. 22—Watford (Clarke)	A 1 2
26—Walsall (Clarke, McSeveney)	H 2 0
29—Workington (McSeveney, Davidson, penalty)	H 2 2
Sept. 5—Colchester United (Wilkinson 2)	A 2 1
9—Scunthorpe United (McSeveney)	H 1 2
12—Gillingham	A 0 1
15—Scunthorpe United (Wilkinson)	A 1 1
19—Bristol City (Corner, McSeveney 2-1 Pen.)	H 3 2
25—Queens Park Rangers (Corner)	A 1 2
30—Barnsley (Clarke)	A 1 1
Oct. 3—Shrewsbury Town (McSeveney, pen.)	H 1 2
7—Barnsley (Chilton 4, Henderson 3)	H 7 0
9—Carlisle United (Chilton)	H 1 0
12—Reading (McSeveney)	H 1 0
17—Luton Town (Chilton 2, Young)	A 3 1
21—Reading (Chilton 2, Henderson)	A 3 3
24—Mansfield Town (McSeveney)	H 1 1
27—Brentford (Chilton 3)	A 3 1
31—Grimsby Town	A 0 3
Nov. 7—Peterborough United	H 0 2
21—Exeter City (Collinson, Wagstaff, Chilton)	H 3 1
28—Oldham Athletic (Wagstaff)	A 1 2
Dec. 12—Watford (Wagstaff)	H 1 1
19—Workington (Chilton 2, McSeveney)	A 3 1
26—Port Vale (Clarke, Wagstaff, Chilton)	A 3 0
28—Port Vale (Wagstaff 3 (1 pen.), Henderson)	H 4 0
1965	
Jan. 2—Colchester United	H 5 1
Wagstaff 2, McSeveney, Chilton, Henderson	
9—(3) Bournemouth (Wagstaff, Chilton 2)	A 3 2
16—Gillingham (Wagstaff)	H 1 1
23—Bristol City (Wagstaff 2)	A 2 1
30—(4) Bristol Rovers (Chilton, McSeveney, Wagstaff)	H 3 2
Feb. 6—Queens Park Rangers (McSeveney, Chilton, Houghton)	H 3 1
13—Shrewsbury Town (Butler, McSeveney, Chilton, Summers)	A 4 0
20—(5) Carlisle United	A 0 0
27—Luton Town	H
Mar. 6—(6) Bristol Rovers	A
13—Grimsby Town	H
20—Peterborough United	A
27—(S.F) Bournemouth	H
April 3—Exeter City	A
10—Oldham Athletic	H
16—Southend United	A
17—Mansfield Town	A
19—Southend United	H
24—Brentford	H
May 1—(Final)	
To arrange—Walsall	A

### NORTH REGIONAL LEAGUE

1964	F. A.
Aug. 22—York City (Jarvis 2, Corner 2)	H 4 0
29—Lincoln	A 0 1
Sept. 5—Scunthorpe (Jarvis 2, Henderson 2, Brown, penalty)	H 5 0
12—Middlesbrough (Corner 3, Jarvis)	H 4 2
19—Hartlepool	A 0 0
26—Port Vale (King, Jarvis, Rafferty)	H 3 1
Oct. 3—Gateshead (Young)	A 1 1
17—Crewe Alexandra (Rafferty 2, Jarvis, Knutsen)	H 4 0
24—Carlisle	A 0 1
31—Grimsby (Heath, Clarke, Brown, penalty)	H 3 1
Nov. 7—Rotherham (Heath)	A 1 1
14—Workington (Rafferty 2, Sharpe)	H 3 0
21—Doncaster (Brown (penalty), Rafferty 2)	A 3 1
28—Oldham Athletic (Brown (penalty), Henderson, Simpkin)	H 3 0
Dec. 5—Workington (Clarke, Jarvis, Rafferty, Sharpe)	A 4 3
12—York City (Brown (pen.), Wilkinson)	A 2 2
19—Lincoln (Rafferty 2, McMillan)	H 3 0
1965	
Jan. 2—Scunthorpe (Simpkin)	A 1 0
9—Bradford City (Rafferty 2, Corner)	H 3 1
16—Middlesbrough (Wilkinson)	A 1 2
23—Hartlepool (Wilkinson 4, Rafferty 2, Henderson, Brown (pen.))	H 8 1
Feb. 6—Port Vale (Heath 2, Young, Rafferty)	A 4 1
13—South Shields (Simpkin, Heath, Young, Wilkinson)	H 4 0
20—Gateshead (Clarke, Wilkinson)	H 2 1
27—Crewe Alexandra	A
Mar. 6—Carlisle	H
13—Grimsby Town	A
20—Rotherham	H
27—	
April 3—Doncaster	H
10—Oldham Athletic	A
17—Bradford City	A
24—South Shields	A
May 1—(Final)	

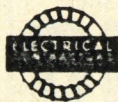
Figures in parenthesis indicate Rounds of the F.A. Cup

### KICK-OFF TIMES: FOOTBALL LEAGUE AND NORTH REGIONAL LEAGUE:

The kick-off times for all matches played at Boothferry Park during Season 1964/65 have been standardised as follows:—

Saturday Matches — Kick-Off 3.00 p.m.  
These Fixtures are the copyright of the Football League Limited, and are printed by their permission under Licence No. 76. They must not be reproduced in whole or in part without permission from the Football League Limited





Tel.  
43477



**BUTTERWORTH BROS. (Electrical)**  
**LIMITED**

Electrical Engineers and Contractors

1 TERRY STREET

HULL

**ANGLERS !!** Get your tackle from

**F. & D. LEDGER**

544 ANLABY ROAD

(Opp. Wheeler Street)

Stockist of Rods and Tackle by:-

SPORTEX

LEES

ALLCOCKS

MARTIN JAMES

PEGLEY-DAVIES

BLACK SEAL

Etc., Etc.



**Kao Sing**

Chinese Restaurant

46-48 JAMESON STREET

Corner of King Edward Street

HULL

Telephone: 289111

FINEST ENGLISH and CHINESE DISHES

**special!**  
**THREE COURSE**  
**LUNCHEON**

**4/-**

11-30 A.M. TO 2-30 P.M.

Open Daily 11-30 a.m. to 11-30 p.m.

SUNDAY 12-30 to 11-30 p.m.

**FORTHCOMING ATTRACTIONS AT BOOTHFERRY PARK**  
**NORTH REGIONAL LEAGUE**  
Saturday, 6th March, 1965 Kick-Off 3 p.m.  
**HULL CITY RES. v. CARLISLE UTD. RES.**

**FOOTBALL LEAGUE**  
Saturday, 13th March, 1965 Kick-Off 3 p.m.  
**HULL CITY v. GRIMSBY TOWN**

### MATCH SUMMARIES

Saturday, 20th February, 1965

1st XI v. Carlisle United (Away) Draw 0—0.

Team: Williams, Davidson, Butler, D., Collinson, Milner, Summers, McSeveney, Wagstaff, Chilton, Henderson, Butler, I.

Res. XI v. Gateshead (Home) Won 2—1.

Team: Swan, Garvey, Sharp, Jarvis, Corner, McMillan, Young, Heath, Wilkinson, Cummins, Clarke.

Scorers: Wilkinson, Clarke.

Junior XI v. Huddersfield Town (Home) Won 1—0.

Team: Hartley, Greenwood, Beardsley, Davidson, Pettit, Hart, Lee, Knutsen, Andrew, Shepherd, Ingram.

Scorers: Knutsen 1 (Pen.)

### FACTS AND FIGURES

Attendances and Gate Receipts—Football League Matches

HOME:									
Aug.	26th	v.	Walsall	10,605		£1,273	7	6	
	29th	v.	Workington	8,725		£1,016	11	6	
Sept.	9th	v.	Scunthorpe	8,754		£1,012	3	6	
	19th	v.	Bristol City	7,485		£836	1	0	
Oct.	3rd	v.	Shrewsbury Town	6,731		£723	6	0	
	7th	v.	Barnsley	7,830		£898	2	0	
	9th	v.	Carlisle	10,931		£1,336	5	6	
	12th	v.	Reading	12,107		£1,551	0	6	
	24th	v.	Mansfield Town	8,842		£979	3	6	
Nov.	7th	v.	Peterborough United	8,054		£928	16	0	
	21st	v.	Exeter City	11,786		£1,469	15	6	
Dec.	12th	v.	Watford	6,165		£660	12	0	
	28th	v.	Port Vale	12,468		£1,668	0	0	
Jan.	2nd	v.	Colchester United	16,928		£2,298	7	6	
	16th	v.	Gillingham	24,426		£3,374	2	0	
	30th	v.	Bristol Rovers	28,399		£3,911	7	0	
Feb.	6th	v.	Queens Park Rangers	23,574		£3,279	19	0	
AWAY:									
Aug.	22nd	v.	Watford	9,586		£1,738	8	9	
Sept.	5th	v.	Colchester	3,310		£395	0	0	
	12th	v.	Gillingham	11,144		£2,046	7	0	
	15th	v.	Scunthorpe	7,525		£1,185	13	0	
	25th	v.	Queens Park Rangers	6,639		£1,251	8	6	
	30th	v.	Barnsley	6,940		£893	16	6	
Oct.	17th	v.	Luton Town	6,020		£939	11	6	
	21st	v.	Reading	8,582		£1,602	16	0	
	27th	v.	Brentford	12,745		£2,486	15	0	
	30th	v.	Grimsby Town	9,650		£1,473	13	0	
Nov.	28th	v.	Olham Athletic	8,516		£1,150	14	0	
Dec.	19th	v.	Workington	3,851		£494	5	0	
	26th	v.	Port Vale	6,099		£1,025	9	0	
Jan.	9th	v.	Bournemouth	7,515		£1,119	15	6	
	23rd	v.	Bristol City	14,131		£2,614	13	0	
Feb.	13th	v.	Shrewsbury Town	7,652		£1,097	7	0	
	20th	v.	Carlisle United	17,174		£2,376	18	9	

### League Cup Matches—

1st Round	Sept. 22nd	v.	Southend Utd.	H	4,012	£596	6	0	0	0
1st Rd. Rpy.	„ 28th	v.	Southend Utd.	A	5,089	£986	9	6	1	3
										Wilkinson

### F.A. Cup

1st Round	Nov. 14	v.	Kidderminster Harr.	A	6,619	£1,079	11	6	4	1
										Wilkinson 2, Heath, McSeveney (pen.)
2nd	„ Dec. 5	v.	Lincoln City	H	10,167	£1,643	5	6	1	1
										Summers
2nd	„ Rpy. „	9	v.	Lincoln City	A	8,383	£1,473	1711	1	3
										McSeveney



Special Buffet Car Excursion  
SATURDAY, 6th MARCH  
**BRISTOL 45/-**



## Bristol Rovers v. Hull City

An excursion train will run in connection with this match from HULL PARAGON Station—see local press for train times.

Further details may be obtained at Stations or appointed travel agencies.

### FOOTBALL LEAGUE—Division 3

Table compiled up to and including

Wednesday, 24th February, 1965.

Club	P	W	D	L	F	A	Pts
HULL C.	34	18	8	8	70	40	44
Gillingham	34	18	7	9	60	38	43
Carlisle U	34	17	9	8	54	38	43
Bristol R.	34	15	11	8	67	47	41
Mans'd T.	33	16	9	8	64	48	41
Brentford	32	17	6	9	64	43	40
Bristol C.	33	14	9	10	66	48	37
Grimsby T	31	12	12	7	51	44	36
Pet'b'gh U	31	15	4	12	63	56	34
B'mouth	33	12	10	11	52	49	34
South. U.	35	14	6	15	52	52	34
Watford	33	11	12	10	51	50	34
Q.P.R.	31	13	7	11	50	52	33
Reading	32	11	10	11	48	53	32
Shrews' T.	32	11	10	11	55	57	32
Scun. U.	33	11	9	13	47	46	31
Work'ton	29	11	8	10	43	47	30
Exeter	31	9	11	11	40	36	29
Oldham A	34	11	7	16	45	57	29
Barnsley	33	8	7	18	46	68	23
Walsall	34	9	5	20	38	65	23
Col'ster U.	35	7	8	20	40	68	22
Luton T.	32	6	10	16	33	62	22
Port Vale	33	4	11	18	28	63	19

### THE NORTH REGIONAL LEAGUE

Table compiled up to and including

Saturday, 20th February, 1965.

Club	P	W	D	L	F	A	Pts
HULL C.	24	17	4	3	66	20	38
Sunderl'd	21	14	5	2	66	25	33
Carlisle U.	23	13	4	6	56	27	30
M'lesb'gh	20	12	5	3	67	25	29
Gateshead	23	11	6	6	53	24	28
Roth. U.	21	11	6	4	46	31	28
Lincoln C.	24	10	6	8	44	44	26
Port Vale	22	10	5	7	42	32	25
Scun. U.	23	9	6	8	46	43	24
Oldham	19	10	3	6	49	35	23
S. Shields	21	9	4	8	51	45	22
Donc'r R.	20	7	7	6	40	31	21
Grimsby	21	8	4	9	36	49	20
Brad. P.A.	25	8	4	13	40	60	20
Work'nton	23	7	5	11	43	61	19
Brad. C.	21	6	4	11	42	46	16
York C.	20	4	6	10	31	44	14
Darl'ton	21	4	6	11	33	63	14
Crewe A.	21	5	3	13	25	54	13
H'pools U.	25	3	7	15	30	77	13
Halifax T.	22	1	2	19	18	88	4

### THE NORTHERN INTERMEDIATE LEAGUE

Table compiled up to and including

Saturday, 20th February, 1965

Club	P	W	D	L	F	A	Pts
Hull City	21	15	3	3	68	21	33
Sunderland	21	14	5	2	75	30	33
M'lesb'gh	21	14	4	3	58	34	32
Sheffield U.	20	13	3	4	45	22	29
Leeds U.	18	13	0	5	41	23	26
Newcastle	21	12	1	8	46	27	25
Sheff'd W.	22	9	5	8	39	42	23
Grimsby T.	21	8	6	7	28	35	22
H'dersf'd	22	8	5	9	35	34	21
Barnsley	21	8	4	9	32	37	20
Brad. C.	22	6	4	12	34	39	16
Roth. U.	20	5	5	10	35	46	15
W'verh't'n	23	5	4	14	45	68	14
Scun. Utd.	18	5	3	10	34	41	13
Ches'rfield	21	5	3	13	39	50	13
Br'df'd P.A.	17	4	1	12	28	72	9
Donc'r R.	21	2	2	17	15	76	6

### RESERVE XI—APPEARANCES AND

GOAL SCORERS TO DATE

Maximum Possible 24. Goals 66.

Player	A.	G.
BROWN, M.	21	6
JARVIS, A.	21	8
McMILLAN, E.	20	1
SHARPE, L.	18	2
CORNER, N.	16	6
GARVEY, B.	16	—
RAFFERTY, R.	16	15
FEASEY, P.	14	—
SIMPKIN, C.	14	3
WILLIAMS, M.	14	—
CUMMINS, G.	13	—
YOUNG, R.	13	3
HEATH, T.	12	5
KING, W.	11	1
CLARKE, D.	10	3
SWAN, M.	10	—
WILKINSON, W.	7	8
SISSONS, P.	6	—
HENDERSON, R.	5	4
KNUTSEN, G.	2	1
BEARDSLEY, D.	1	—
BUTLER, D.	1	—
CHILTON, C.	1	—
COLLINSON, L.	1	—
MILNER, M.	1	—

# A. E. TODD

(BUILDERS LIMITED)

21b CAVE ST. - HULL

Telephone No. 42213

BUILDING AND

PLUMBING CONTRACTORS

After Hours - Tel. Nos. 358772 - 69616

ESTIMATES FREE.

Jobbing Work promptly and efficiently executed

SHOP THE MODERN WAY at

## SAVEMORE STORES

### HULL'S PREMIER SUPERMARKETS

(George Street, Derringham Bank and Market Place)

Save More

at

## SAVEMORE

You can forecast the result

with

## STORRILUX

### DURABLE FULL GLOSS PAINT

A perfect defence against weather conditions, long lasting, combines beauty with protection, THE RESULT ALWAYS PLEASES

## STORRY SMITHSON & CO. LTD.

PAINT, ENAMEL & VARNISH SPECIALISTS SINCE 1831

BANKSIDE WORKS, HULL

Telephone 41441

## N. A. COLAM

NEWSAGENT, STATIONER & TOBACCONIST

Specialist in

### GREETING CARDS

23 SPRING BANK, HULL

Telephone 20291

— WE NEVER SLEEP —

## W. H. ELLYARD LTD.

187 HESSLE RD., HULL

TAXIS AT ANY HOUR

TELEPHONE

# 37584



# ELTHERINGTON'S for Aluminium

Ring - 29093 or 20336

**SHEETS . PLATES . ANGLES  
BARS . TUBES**

J. E. ELTHERINGTON & SON (ALUMINIUM) LTD.  
15, PEMBERTON STREET · DANSOM LANE · HULL

## HENRY HIRD'S

THE JEWELLERS

270  
HESSLE  
ROAD



Near  
the  
Boulevard

SIGNET and  
ETERNITY RINGS

WATCHES, CLOCKS,  
CUTLERY, SILVERWARE

# PHOTO LITHO

**ART WORK** Designing · Working Drawings · Typesetting  
**PHOTO-LITHO** Modern Techniques by First Class Craftsmen  
**PROOFING** Fully Automatic Proofing Presses—Quad Demy  
**QUALITY** Always First Class....with Personal Supervision  
**SERVICE** Specifications carried out to ensure high grade work  
**PRICES** Estimates by return. Ask for one of our representatives to call....you will be impressed

**MILLAR·TRANMER LTD**

WRIGHT STREET · HULL  
Telephones 35207 and 27318