

BRISTOL ROVERS

FOOTBALL CLUB LTD (Founded 1883)

FOOTBALL LEAGUE - THIRD DIVISION



Nº 62244

Official Programme 6d

BRISTOL ROVERS

v.

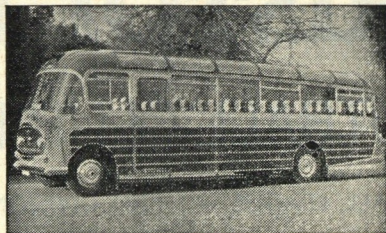
LUTON TOWN

SATURDAY, DECEMBER 19th, 1964 Kick-off 3.0 p.m.

BRISTOL STADIUM · EASTVILLE

Follow the
ROVERS

example and
travel with



WEMS LUXURY COACHES

NORTH VIEW, BRISTOL, 6

Telephone: 36441

A FLEET OF LUXURY COACHES AVAILABLE FOR
FOOTBALL, SKITTLE MATCHES, OUTINGS, etc.

FLOWERS

ADD CHARM TO ANY OCCASION



WEDDING FLOWERS

FLORAL TRIBUTES

FLOWERS SENT ANYWHERE



HOME OR ABROAD

NITE TEL. 65-3394

ROGER ET CIE

LTD

746 FISHPONDS ROAD

Tel. 65-2365

24 GLOUCESTER ROAD
Tel. 4-3009

445 GLOUCESTER ROAD
Tel. 4-4523

BRISTOL ROVERS FOOTBALL CLUB LTD.

President: HIS GRACE THE DUKE OF BEAUFORT, K.G., P.C., G.C.V.O.

Directors:

P. W. HORT (Chairman); H. E. L. BROWN; J. P. HARE;
D. MEARNES MILNE; D. SIMPSON; C. A. L. STEVENS; G. W. VAUGHAN
Manager: B. J. TANN.

Secretary: R. A. MOULES.

Medical Officer:

Dr. W. T. CUSSEN, M.B., Ch.B., B.A.O.

Trainer: W. MCARTHUR

Coach: R. CAMPBELL



*We wish you all
a Happy Christmas*

WELCOME — "THE HATTERS"

Apart from a short spell of success at the start of the campaign, this season has provided many problems for Luton Town.

Several factors have contributed to the Hatters' difficulties, among them the loss of free-scoring centre-forward John O'Rourke with a troublesome ankle injury. O'Rourke scored 22 goals in 23 League matches last term, after being signed from Chelsea on a free transfer in September 1963, but has recently been in hospital and missed the last twelve League and Cup games. Although he is making progress it is only slow, and, unfortunately, he is unlikely to be fit to resume for some time yet.

Numerous changes have been made in the front line, in which the three most regular choices have been David Pleat, John Reid and Ray Whittaker. Pleat, who was signed from Nottingham Forest on August 26th, made his debut for the Hatters the same day and has since been an automatic choice, his appearances being divided between the right wing and inside-right positions.

Reid has played in every League game at inside-left, and his partner Whittaker has been absent only twice.

Several players have been tried at centre-forward since O'Rourke's injury, the most recent occupants of the position being Tom McKechnie and Gordon Riddick. McKechnie is now top marksman with six League goals.

Another notable forward absentee for most of the season has been that very experienced winger Billy Hails, whom the Hatters signed from Northampton Town in the summer. He was injured in training before the campaign began, and has played in only three League matches since. Apart from three games, in which he was replaced by Colin Tinsley, the former England international Ron Baynam, who is the Hatters' longest-serving player, has been a regular choice



R. BAYNAM

in goal, with Alan McBain and Fred Jardine being partners at full-back since early in October. Jardine was brought in when ex-Everton John Bramwell was switched to left-half.

David Pacey, who scored Luton's goal when they played Nottingham Forest in the Cup Final of 1959, has recently been recalled at right-half in place of Mark Lownds, and Graham Caleb, a promising teenager, has been preferred to Gordon Fincham at centre-half in some recent games.

The Hatters began the campaign in fairly encouraging fashion by taking eight points from their six opening fixtures. Their only defeat in that spell was when we won 2-0 at Kenilworth Road on August 29th. Since then, however, their subsequent 18 Third Division games have yielded only eleven points. They did not win a League match on their own ground from August 26th until beating Brentford last week, having drawn six and lost four in the interim. They have, however, won two F.A. Cup-ties at home against Southend and Gillingham, both by the only goal.

Luton have done better on opponents' grounds than several of the clubs above them in the table, having gained three victories and three draws in twelve games. Their wins have been at Colchester (1-0), Oldham (2-0) and Reading (2-1), and the draws at Grimsby and Brentford (both 2-2) and Carlisle (1-1).



J. BRAMWELL

(Photos by courtesy of
Bristol Evening Post)

CHRISTMAS FIXTURES AT EASTVILLE

BOXING DAY, SATURDAY NEXT, DEC. 26th—Kick-off 3.0 p.m.

(FOOTBALL LEAGUE, DIV. 3)

QUEEN'S PARK RANGERS

MONDAY, DECEMBER 28th—Kick-off 3.0 p.m.

(FOOTBALL COMBINATION)

NOTTS COUNTY RESERVES

A FULL-LENGTH COMMENTARY ON THIS AND ALL OTHER ROVERS' HOME GAMES IS RELAYED TO 24 HOSPITALS BY "HOSPITAL BROADCASTS."

A REMINDER

TRESPASS ON THE PITCH BY SPECTATORS IS FORBIDDEN

YOU WILL SEE THE RESULTS OF THE EASTVILLE CHRISTMAS ENTERPRISE THIS AFTERNOON

1. AT HALF-TIME

Boards will be carried around the Ground displaying all winning numbers, as under:—

PINK BOARDS will list the winning numbers in respect of pink vouchers issued to all ladies as they entered the Ground this afternoon. The prizes to be won are:—

- 10 Gift Vouchers of £5 each.
- 10 Gift Vouchers of £2. 10s. 0d. each.
- 50 Gift Vouchers of £1 each.

BLUE BOARDS will list:—

- (a) winning numbers in respect of blue vouchers issued to all children as they entered the Ground this afternoon. The prizes to be won are:—

- 4 Junior Footballs.
- 50 Gift Vouchers of 10/- each.

- (b) winning numbers in respect of PROGRAMMES purchased since the Oldham Athletic game on October 20th (including today's). The prizes are:—

- 6 Christmas Hampers.
- 1st Cash Prize of £15
- 2nd Cash Prize of £10
- 3rd Cash Prize of £5
- 5 Cash Prizes of £1

A TOTAL OF 138 WINNING NUMBERS — SO CHECK YOUR PROGRAMMES AND VOUCHERS CAREFULLY.

2. AFTER THE GAME

Prizes may be claimed from the Secretary's Office immediately after the game—and the Winning Numbers Boards will be displayed at the Office, and at the Muller Road exit.

CLOSING DATE FOR CLAIMS — TUESDAY NEXT, DECEMBER 22nd, 1964.

- 3. Lists of prize-winners will be obtainable from Wednesday of next week.

- 4. **Before** you leave, light snacks and hot drinks may be obtained at all buffets in the Stadium.

After you leave, you can complete your Christmas shopping with the local traders who have co-operated in the Christmas Enterprise:—

- J. D. BENTLEY (Confectionery, Xmas Cards and Decorations)
- BOLLOM LTD. (Dry Cleaners)
- WM. BURROW LTD. (Gents' and Boys' Outfitters)
- EDYTH'S (Florists)
- WM. FORCE & SON (Gents' and Boys' Outfitters)
- MARLOWS (Ladies' Fashions)
- ROY'S T.V. (Television and Radio, etc.)
- SMELE'S (Fruit, Fish, Vegetables, etc.)
- F. W. STONE (Ironmongery and everything for the home)
- WHITE SWAN HOTEL (Wines, Spirits, etc.)
- WOODWARD & SONS (Family Butchers and Poulterers)

THE LORD MAYOR OF BRISTOL'S CHRISTMAS APPEAL

A Collection will be taken in support of The Lord Mayor's Appeal this afternoon. PLEASE GIVE GENEROUSLY.

THE 19" GROSVENOR 405/625

Rediffusion's elegant new 19" GROSVENOR is fully switchable to 625-line programmes. No aerials needed. Specially designed for Rediffusion's own wired television system, this set costs only £49. Rental £5.4.0 initial payment and 7/6 a week reducing after minimum 1-year rental period. You simply switch on to enjoy a perfect picture free from fading or local interference.

PRESENT PROGRAMME SERVICE

TWW, Westward, BBC TV plus 3 radio programmes (including Luxembourg) all from one set for only 4/3 a week, in addition to service rental.

PART EXCHANGE

Your old television set taken in part exchange when you buy or rent a new GROSVENOR.

MAINTENANCE SERVICE

Operates up to 10.30 pm every day, including Bank Holidays.

Regional Office:

2/3 BROAD PLAIN, BRISTOL 2
Tel: Bristol 23332

SHOWROOMS AT:—

BRISTOL
2/3 Broad Plain.....Tel 23332
6 Merchant St.....Tel 24606
63 Gloucester Rd.....Tel 49045
156 Whiteladies Rd.....Tel 33442
4 Filwood Broadway.....Tel 66486

EXETER
149 Sidwell St.....Tel 76445
Bampfylde St.....Tel 76444
EXMOUTH
14 Victoria Rd.....Tel 3428

PLYMOUTH
8 Sawrey St.....Tel 64071
56 Cornwall St.....Tel 64073
SOUTHAMPTON
6 London Rd.....Tel 25323
389 Shirley Rd.....Tel 72001

24/26 Lyon St.....Tel 25321
12 East St.
PAIGNTON
50 Torquay Rd.....Tel 56321
PENZANCE
69 Causewayhead.....Tel 2961

BRISTOL ROVERS

Colours: Blue and White Vertical Stripes, White Shorts

R
L

HILLARD (2)
MABBUTT (4)
JARMAN (7)

HALL
DAVIS (5)
BROWN (8)

JONES, G. (3)
STONE (6)
JONES, R. (9)
HAMILTON (10)
HAVERTY (11)

Referee:
Mr. J. Lowry
(Neath)

TOOCOODS
OF BRISTOL
GARAGES :: SHEDS,
HOME EXPANSIONS, Etc.
Show Site:—
Winterstoke Road, Ashton Gate

Linesmen:
Mr. L. P. Williams
(Llanelly)
(Yellow Flag)
Mr. R. A. Cole
(Malvern)
(Red Flag)

WHITTAKER (11)
REID (6)
BRAMWELL (3)

RIOCH (10)
CALEB (5)
BAYNHAM

McKECHNIE (9)
RIDDICK (8)
McBAIN (2)

PLEAT (7)
PACEY (4)

L
R

LUTON TOWN

Get set for 625 with **REDIFFUSION** wired vision service

SUPPORTERS' ACTIVITIES

1. SUPPORTERS' CLUB NOTES

*Headquarters: 468 STAPLETON ROAD, BRISTOL, 5.
(Telephone: Bristol 56967)*

Ladies and Gentlemen,

The winners in our Car Competition No. 1 for weeks 6, and 7 have been as follows:—

No. 130—Mr. E. Mercer, 62B, High Street, Staple Hill, Bristol — £5.

No. 165—Mr. R. C. Britton, 175, Manor Road, Fishponds, Bristol—£5.

I am glad to say that we have now started Car Competition No. 2 and the first winner is:—

No. 426—Mrs. C. M. Britton, 13, Abbott Road, Severn Beach — £5.

Club Members are requested to note in their Membership Cards that our Hon. Membership Secretary, Mr. G. Purnell, has changed his address. His new address is 30, Froomshaw Road, Frenchay, Bristol.

Mrs. Daisy Tozer writing from K. Ward, Winford Hospital, thanks all her friends for their good wishes and hopes to be home for Christmas. She was delighted to receive a visit from several of the players.

The support for our away matches from Eastville continues to give us every satisfaction. We sent two coaches to Mansfield which was very encouraging just before Christmas.

A glance at the records of the three leading Clubs to date is very interesting. Whereas the Rovers have played 12 home games and 12 away games, Grimsby Town with a game less have played 13 at home and 10 away and Mansfield Town with the same number of games played as the Rovers have played 13 at home and 11 away.

As these are the last notes to appear before the holidays I should like to take this opportunity, on behalf of the Committee, to express Seasonal Greetings to Directors, Staff and Players of the Football Club and to all Supporters' Club Members.

ERIC GODFREY, *Chairman and Hon. Secretary.*

2. BRISTOL ROVERS' SUPPORT FUND SOCIETY

478 Stapleton Road, Bristol, 5 (Telephone 56221)

(Registered under the Betting, Gaming and Lotteries Act 1963)

TICKETS (1/-) ON SALE NOW

PRIZES (Monday to Friday)

1st Prize : £30

2nd Prize : £5

Plus 5 Prizes of £2 each

Plus 5 Prizes of £1 each

EVERY
DAY

PLUS £100 JACKPOT EVERY SATURDAY

REMEMBER ! . . .

ALL FUNDS RAISED BY THE SUPPORT FUND ARE USED
SOLELY TO SUPPORT BRISTOL ROVERS.

(Agency enquiries welcomed at 478 Stapleton Road,
where the office remains open until 3.0 p.m. on Saturdays).

3. PIRATES' NOTES

Over 100 Pirates turned up for the Football Forum last Monday evening and spent an interesting evening having their questions answered by a panel of soccer experts. The Team included Mr. George Walker, Chairman of the Bristol Referees' Association and Rovers' players Joe Davis, Harold Jarman and Terry Oldfield.

The next get-together is on Monday, January 18th, kick-off 7.15 p.m., when there will be a showing of a two-hour soccer film. More news of this next Saturday.

Code for Half-Time Scores

(There are two Scoreboards, at Ground level, one behind each goal.)

Letters on Board	TEAMS	SCORES	Letters on Board	TEAMS	SCORES
A	Liverpool		K	Southampton	
B	Blackburn Rovers		L	Newcastle United	
	Manchester United			Bournemouth	
C	Leicester City		M	Peterborough Utd.	
	Nottingham Forest			Brentford	
D	West Ham United		N	Carlisle United	
	Sunderland			Colchester United	
E	Chelsea		O	Port Vale	
	Tottenham Hotspur			Exeter City	
F	Everton		P	Grimsby Town	
	Wolverhampton W.			Oldham Athletic	
G	Leeds United		R	Mansfield Town	
	Cardiff City			Southend United	
H	Plymouth Argyle		S	Reading	
	Coventry City			Walsall	
I	Bolton Wanderers		T	Bristol City	
	Northampton Town			Watford	
J	Manchester City		V	Gillingham	
	Norwich City			Workington	
	Rotherham United			Hull City	

THE FOOTBALL LEAGUE (Div. 3)

(Up to and including 12/12/1964)

	P.	W.	D.	L.	F.	A.	Ps
Grimsby Town.	23	12	8	3	41	26	32
Bristol Rovers.	24	11	9	4	49	32	31
Mansfield	24	11	8	5	49	39	30
Bristol City....	24	11	7	6	53	34	29
Brentford	24	12	5	7	45	33	29
Carlisle	24	10	8	6	37	26	28
Gillingham	24	11	6	7	38	27	28
Workington	22	10	7	5	38	34	27
Peterborough ..	24	11	4	9	50	47	26
Hull City	23	9	6	8	39	31	24
Bournemouth..	23	8	8	7	39	34	24
Shrewsbury	23	9	6	8	41	36	24
Reading	24	9	6	9	38	36	24
Q.P.R.	22	9	6	7	35	36	24
Southend	24	10	3	11	34	35	23
Scunthorpe	24	7	8	9	34	34	22
Watford	22	6	10	6	32	38	22
Oldham	24	7	6	11	28	40	20
Exeter City....	22	6	7	9	22	23	19
Luton Town....	24	5	9	10	25	42	19
Port Vale	23	3	9	11	22	39	15
Barnsley	23	4	6	13	27	47	14
Colchester	24	4	6	14	25	47	14
Walsall	24	6	2	16	26	51	14

THE FOOTBALL COMBINATION

(Div. 2)

(Up to and including 12/12/1964)

	P.	W.	D.	L.	F.	A.	Ps
Oxford United.	16	13	2	1	38	14	28
Southampton .	19	10	6	3	44	28	26
Luton Town...	18	9	4	5	38	28	22
Leyton Orient .	18	9	3	6	35	29	21
Birmingham ..	18	9	2	7	40	27	20
Coventry City .	16	9	2	5	37	27	20
Charlton Ath. .	18	7	5	6	40	28	19
Swindon Town. .	18	9	1	8	45	34	19
Bournemouth..	14	6	5	3	24	16	17
Q.P.R.	15	5	6	4	27	20	16
Bristol Rovers.	17	4	7	6	25	36	15
Watford	16	4	6	6	29	34	14
Brighton	17	5	4	8	26	32	14
Brentford	16	4	5	7	18	23	13
Notts County..	18	4	5	9	30	47	13
Aldershot	17	5	3	9	25	40	13
Reading	15	4	4	7	22	39	12
Southend Utd..	21	5	1	15	38	60	11
Millwall	17	3	5	9	16	36	11

BRISTOL ROVERS' TEAMS AND RESULTS
NOVEMBER 28th to DECEMBER 12th

Saturday, November 28th

Football League, Div. 3 (home to Workington)

Hall; Hillard, Jones, G.; Oldfield, Davis, Stone; Jarman, Brown, Jones, R., Hamilton, Munro.

Result: 4—0 (Scorers: Jarman, Brown, Jones, R., Munro).

Attendance: 12,029.

Bristol Premier Combination, Div. 2 ("A" Team away to Eastville O.B.)

Sleeman; Weaver, Bees; Durnell, Larcombe, Smallcombe; Kirkham, Bull, Hunt, Barney, Smith.

Result: 2—1 (Scorers: Weaver, Durnell).

Bristol Church of England League U-18 (Junior Team away to St. Andrews)

Maggs; Harding, Copestake; Taylor, Lloyd, Evans, D.; Price, Brown, R., Evans, T., Medhurst, Ferris.

Result: 4—3 (Scorers: Price 3, Own Goal 1).

Wednesday, December 2nd

Wessex Youth League (away to Cardiff City)

Taylor; Weaver, Bees; Tovey, Taylor, S., Larcombe; Craydon, Frude, Pountain, Barney, Prosser.

Result: 4—4 (Scorers: Frude 2, Pountain, Barney).

Saturday, December 5th

F.A. Cup, 2nd Round (home to Weymouth)

Hall; Hillard, McCrohan; Oldfield, Davis, Stone; Jarman, Brown, Jones, R., Hamilton, Munro.

Result: 4—1 (Scorers: Jarman 2, Brown, Munro). Attendance: 12,468.

Glos. F.A. Senior Amateur Cup, 3rd Round ("A" Team away to Cadbury Heath)

Sleeman; Larcombe, Bees; Durnell, Lloyd, Smallcombe; Price, Bull, Hunt, Frith, Smith.

Result: 0—5

Bristol Church of England League U-18 (Junior Team away to Broomhill Y.C.)

Maggs; Harding, Copestake; Laycock, Taylor, C., Lloyd, Brown, Morgan, Evans, D., Evans, T., Ferris.

Result: 6—0 (Scorers: Evans, D. 4, Evans, T. 1, Ferris).

Tuesday, December 8th

F.A. Youth Cup, 2nd Round (home to Swansea)

Taylor; Weaver, Bees; Tovey, Taylor, S., Larcombe; Craydon, Barney, Hunt, Frude, Parker.

Result: 1—2 (Scorer: Frude). Attendance: 814.

Saturday, December 12th

Football League, Div. 3 (away to Mansfield)

Hall; Hillard, Jones, G.; Oldfield, Davis, Stone; Jarman, Brown, Jones, R., Hamilton, Munro.

Result: 0—3. Attendance: 4,784.

Football Combination, Div. 2 (Reserves home to Luton Town)

Taylor; Quarrington, Parsons; Jeffery, Taylor, S., Mabbutt; Scarrott, Hudd, Biggs, Frude, Haverty).

Result: 1—1 (Scorers: Biggs). Attendance: 2,627.

Bristol Premier Combination, Div. 2 ("A" Team away to Douglas)

Sleeman; Weaver, Parker; Durnell, Larcombe, Smallcombe; Frith, Hipwood, Hunt, Barney, Kirkham.

Result: 2—2 (Scorers: Weaver, Frith).

Bristol Church of England League U-18 (Junior Team home to Avonmouth Jun.)

Maggs; Spencer, Harding; Lacock, Lloyd, Taylor; Brown, Johnson, Evans, T., Evans, D., Ferris.

Result: 4—3 (Scorers: Brown, Johnson 2, Evans, T.)

BRISTOL STADIUM, (Eastville)

Greyhound Racing
at this STADIUM
EVERY WEDNESDAY
AND SATURDAY
at 7.30 p.m.

USUAL ATTRACTIVE PROGRAMME

BEFORE AND AFTER THE GAME MEET YOUR FRIENDS AT

THE WHITE SWAN HOTEL

Corner Robertson Road, Eastville.

LOUNGE SMOKE ROOM, PUBLIC BAR
CLUB ROOMS FOR MEETINGS, WEDDINGS ETC.
BED AND BREAKFAST — DOUBLE & SINGLE ROOMS
(Hot and cold water all rooms)

Telephone:- Bristol 56187

Just 500 yards from the Rovers' Ground

WILLIAM BURROW LTD.

Eastville's Popular Price Man's Shop

441 Stapleton Road, Bristol, 5.

For your Raincoats — Shirts — Trousers
Sportsjackets — Suits — Socks — Caps etc.

**START SAVING PROGRAMMES AGAIN
FROM NEXT WEEK**

The serial numbers of all programmes printed from the Q.P.R. game on Boxing Day to the Hull City match on Saturday, March 6th, 1965, will go into a special

ENGLAND v. SCOTLAND DRAW

Watch for further details next week.

ACKNOWLEDGMENTS

We are grateful for the help given in connection with the Xmas Enterprise by:—

Whitbread & Co. Ltd.—for a goodly supply of Mackesons.

Morans (Bristol) Ltd.—for Wines and Spirits (Hampers).

Toogoods of Bristol—protective fencing (Xmas trees).

Spall Sports Ltd.—footballs (Children's prizes).

Write to Spall Sports Ltd., 9-11 Fitzilian Avenue, Harold Wood, Essex
for footballs—carriage paid.

**THE FIRST AID COVERING AT ALL MATCHES IS MAINTAINED
BY THE MEMBERS OF THE ST. JOHN AMBULANCE BRIGADE—
THE SERVICES BEING ENTIRELY VOLUNTARY.**

DOUBLE DIAMOND

AND

SKOL Lager

in Bottle and on Draught

IND COOPE DRAUGHT D and BOTTLED BEERS

**ALWAYS OBTAINABLE IN THE BAR
AT
BRISTOL ROVERS SUPPORTERS' CLUB**