



SEASON

1964-5



READING

FOOTBALL CLUB

OFFICIAL PROGRAMME 4d

COOKS

**FOR NEW HOUSES
AND BUNGALOWS
IN READING
AND DISTRICT**

JAMES T. COOK & SON LTD

Estate Developers

74-76 LONDON STREET, READING

Telephone 51291

READING'S BUILDERS FOR OVER 60 YEARS

READING FOOTBALL CLUB LIMITED

Founded 1871

Volume 19 Number 14

21 November, 1964

DIRECTORS

Chairman

A. E. SMITH, Esq

Vice-Chairman

F. V. WALLER, Esq.

D. P. BAYLIS, Esq.

W. T. D. VINCENT, Esq

L. DAVIES, Esq.

Team Manager

R. T. F. BENTLEY

Secretary Manager

F. MAY

Registered Office & Ground

ELM PARK, READING

Telephone & Telegrams

54154 (READING)

Colours

SHIRTS: BLUE & WHITE HOOPS.
KNICKERS: WHITE

ELM PARK ATTRACTIONS

Wednesday next, 25th November

FOOTBALL COMBINATION

Kick-off 7.15 p.m.

LEYTON ORIENT

★ ★

Saturday next, 28th November

HAMPSHIRE LEAGUE

Kick-off 3 p.m.

SOUTHAMPTON 'A'



SPECIAL DEPARTMENT

Branches throughout Berkshire and adjoining Counties

easy withdrawals
**THE THAMES
VALLEY**

**TRUSTEE
SAVINGS
BANK**

H.F. WARNER LTD

STAR WORKS KNOWL HILL

TWYFORD, BERKS

**CLAY ROOFING TILES AND BRICKS
CLINKER AND CONCRETE BLOCKS
RED DRESSING FOR TENNIS COURTS
AND RUNNING TRACKS**

(As Supplied to Reading F.C. & many other League Clubs)

From the Team Manager's Office...

Good Afternoon Ladies and Gentlemen,

On Saturday last, we, in company with other Third and Fourth Division Clubs, started on the "Road to Wembley" when Watford came to Elm Park, in the first round of the F.A. Cup, and we were very pleased to emerge successfully by 3-1.

Peter Knight our recent signing was not eligible to play and Denis Allen took his place, with Peter Shreeves playing at inside-right, Arthur Wilkie was unfit to play and Michael Dixon deputised for him.

It was very pleasing indeed to see the Cup Tie Spirit so much in evidence amongst the spectators and the colourful display of the Club's colours was most impressive.

From the kick-off we opened up the attack and dominated the game for some time but failed to penetrate a sound defence. By playing some sound constructive football, the Watford defenders had some anxious moments and only on rare occasions was Michael Dixon and his co-defenders troubled.

We continued to have the better of the game, and it was very pleasing indeed to see us score twice inside a minute, the first coming from Johnny Walker, from the penalty spot and the second from Ralph Norton, who took full advantage of some good approach work by Pat Terry and Peter Shreeves.

After the interval we continued our onslaught and a second penalty kick was awarded when Jones stopped a certain goal with his hands. Pat Terry's shot found the net, but the kick had to be re-taken, and his second effort hit the bar and was ultimately scrambled away.

This did not deter our lads at all, and after continued pressure on the visitors' goal, Denis Allen's corner kick was headed goalwards by Pat Terry, and Dougie Webb made it three.

Watford now made only spasmodic raids towards our goal, and they reduced our lead when full-back Nicholas scored with a long-range shot.

From then until the final whistle, we turned on full pressure, and Goy, in the visitors' goal, had to be at his best to prevent us scoring further goals.

MENS

MILWARDS

BROAD STREET
WEST STREET

SHOES



**SIGMUND
PULSOMETER
PUMPS**

Britain's largest Manufacturers
of Centrifugal Pumps

OXFORD ROAD, READING

Presenting . . .

LUTON TOWN FOOTBALL CLUB

whose Directors, Officials and Players we welcome to Elm Park this afternoon for our Football League fixture.

This well-known Bedfordshire Club was founded in 1885, and was the first Club in the South of England to employ professional players.

Manager: Mr. W. Harvey. Secretary: Mr. R. Redhead.
R. Baynham—Has been with Luton since 1951. Was secured from Worcester City. Represented England on several occasions.

A. McBain—Born in Aberdeen. Played for Carlisle. He attracted our Manager's attention and was transferred to Luton in exchange for J. Lornie and A. Ross.

F. Jardine—Born in Edinburgh. Played for Dundee for two seasons before coming to Luton at the end of Season 1960-61.

M. Lownds—Signed from Durham in January, 1960. Became full-timer on completion of his apprenticeship with a local firm. Is a wing-half who likes to get on with the game.

G. Caleb—This youngster signed as an apprentice footballer for us in December, 1961. He settled down very well and showed such promise that he was offered full Professional Registration in April, 1963.

J. Bramwell—Joined Luton in October, 1960 from Everton, and has proved a very capable player, worthy to be considered for International honours.

J. O'Rourke—Was previously with Arsenal and Chelsea, from whom we signed him on a free transfer in December, 1963.

D. Pacey—Born in Luton, signed for the Club in 1956. Member of the England Under-23 Team against Germany and Italy.

G. Riddick—Turned professional in April, 1961, following a short period of apprenticeship. Much is expected of this lad as he gains more experience.

J. Reid—Previously played for Bradford and Northampton, to whom we made a substantial transfer fee in November, 1963.

Ray Whittaker—A Londoner from Bow, his only other Club being The Arsenal. He gained England Youth International honours with John O'Rourke in 1962 and 1963, and joined us in March, 1964.

ADWEST

Sonning
2351

ADWEST ENGINEERING LTD., READING

Offer well paid jobs to skilled and semi-skilled fitters and machinists. Apply now to Personnel Manager, Woodley.

HOW THEY STAND FOOTBALL LEAGUE—DIVISION III

	P.	W.	D.	L.	F.	A.	Pts.
Bristol Rovers	21	10	8	3	44	28	28
Grimsby	20	11	6	3	35	22	28
Brentford	21	11	5	5	35	24	27
Workington	20	10	6	4	38	30	26
Mansfield	22	9	8	5	44	38	26
Bristol City	21	9	6	6	46	30	24
Gillingham	21	10	4	7	32	25	24
Carlisle	20	8	8	4	29	23	24
Bournemouth	20	8	7	5	37	30	23
Shrewsbury	21	9	5	7	38	31	23
Peterborough	21	10	3	8	43	43	23
READING	21	8	6	7	35	32	22
Hull	20	8	5	7	34	37	21
Q.P.R.	19	8	5	6	30	27	21
Watford	19	6	8	5	29	31	20
Scunthorpe	21	6	6	9	31	32	18
Exeter	19	6	5	8	20	19	17
Southend	21	7	3	11	29	34	17
Oldham	21	6	5	10	25	36	17
Luton	21	3	9	9	19	38	15
Barnsley	20	4	6	10	25	38	14
Port Vale	21	2	9	10	20	38	13
Colchester	21	3	5	13	22	42	11
Walsall	20	4	2	14	20	42	10

GOALSCORERS—

Travers, 8.
Terry, 6.
Fairchild, 1.

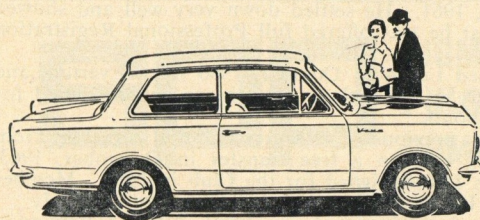
League Cup—
Allen, 1.
Meldrum, 1.

Thornhill, 7.
Shreeves, 2.
Grant, 1.

Grant, 2.
Travers, 1.
Own Goal, 1.

Webb, 7.
Allen, 2.
Own Goal, 1.

Webb, 2.
Terry, 1



VIVA! VIVA!

*see and
try it at*

Great Western Motors

VAUXHALL Main Dealer
Showroom: Station Road
Tel: Reading 55501

VAUXHALL Service & Parts
Vastern Road
Reading



...the best of everything at

BAYLIS
supermarkets

BROAD ST., ERLIGH RD., 250 SHINFIELD RD., READING
& AT CAVERSHAM · NEWBURY · ABINGDON
WALLINGFORD & CROWTHORNE

Reading

RIGHT

Arthur Wilkie

1

LEFT

Shirts: Blue and White
Knickers: White

3

Johnny Walker

2

Colin Meldrum

5

6

Ralph Norton

Dick Spiers

Peter Kerr

Peter Knight

7

Peter Shreeves

9

Douggie Webb

11

Michael Travers

Pat Terry

10

Michael Travers



REFEREE:

Mr. G. T. Powell
(Newport, Mon.)

LINESMEN:
RED FLAG—

Mr. R. J. Edwards
(Newport)

YELLOW FLAG—

Mr. M. V. Sinclair
(Guildford)

Whittaker

11

Reid

10

Riddick

9

8

Harber

Pleat

7

Bramwell

6

Caleb

5

Lownds

4

Jardine

3

McBain

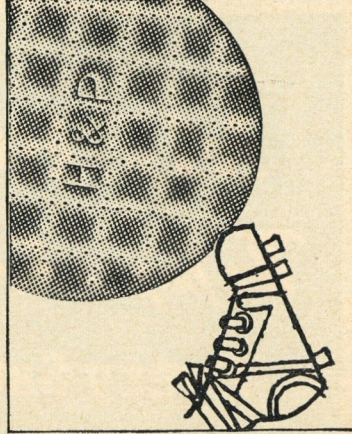
2

LEFT
Shirts: Red
Knickers: White

Baynam

RIGHT

Luton



kick off with

Huntley & Palmers

Cornish Wafers
-at any time!

(always top of the table)

CHRONICLE

The paper for READING

Every Friday 4^d

MERCURY

The paper for the COUNTY

Every Saturday 4^d

FIXTURES 1964-65

Football League

Aug.	22—Bournemouth	A	2	3
"	26—Shrewsbury Town	H	3	1
"	29—Southend United	H	2	0
Sept.	1—Shrewsbury Town	A	0	4
"	4—Barnsley	A	1	1
"	7—Q.P.R.	A	1	0
"	12—Scunthorpe United	H	2	0
"	16—Q.P.R.	H	5	3
"	19—Walsall	A	1	4
"	23—Q.P.R. (L.C.2)	H	4	0
"	26—Watford	H	6	2
"	29—Bristol City	A	0	2
Oct.	2—Workington	A	2	0
"	7—Bristol City	H	1	1
"	10—Oldham Athletic	H	1	0
"	12—Hull City	A	0	1
"	14—Fulham (L.C.3)	1	1	3
"	17—Bristol Rovers	A	0	1
"	21—Hull City	H	3	3
"	24—Brentford	H	1	1
"	26—Peterborough Utd.	A	0	1
"	31—Colchester Utd.	A	2	2
Nov.	7—Port Vale	H	1	1
"	14—Watford (F.A. Cup)	H	3	1
"	21—Luton Town	H		
"	28—Mansfield Town	A		
Dec.	5—F.A. Cup 2nd Round			
"	12—Bournemouth	H		
"	19—Southend United	A		
"	26—Exeter City	A		
"	28—Exeter City	H		
1965				
Jan.	2—Barnsley	H		
"	9—(3) Carlisle United	A		
"	15—Scunthorpe United	A		
"	23—Walsall	H		
"	30—(4) Grimsby Town	H		
Feb.	6—Watford	A		
"	13—Workington	H		
"	20—(5) Oldham A.	A		
"	27—Bristol Rovers	H		
Mar.	6—(6) Grimsby Town	A		
"	13—Colchester Utd.	H		
"	20—Port Vale	A		
"	27—(S.F.) Carlisle Utd.	H		
April	3—Luton Town	A		
"	10—Mansfield Town	H		
"	16—Gillingham	A		
"	17—Brentford	A		
"	19—Gillingham	H		
"	24—Peterborough Utd.	H		
May	1—(Final)			

Combination

1964

Aug.	22—Southampton	H	3	3
"	25—Coventry City	A	1	5
Sept.	2—Watford	H	3	2
"	12—Brighton & Hove	A	0	4
"	14—Q.P.R.	H	1	1
"	22—Millwall	A	P	
"	30—Aldershot	H	3	1
Oct.	10—Charlton Athletic	A	0	4
"	14—Bournemouth	H	P	
"	24—Notts County	A	1	4
"	28—Swindon Town	H	2	1
Nov.	7—Luton Town	A	0	2
"	11—Brentford	H	1	0
"	21—Bristol Rovers	A		
"	25—Leyton Orient	H		
Dec.	2—Bournemouth	A		
"	12—Southampton	A		
"	16—Coventry City	H		
"	26—Q.P.R.	A		
"	28—Birmingham City	A		

1965

Jan.	5—Watford	A		
"	13—Brighton & Hove	H		
"	20—Birmingham City	H		
"	27—Oxford United	H		
Feb.	3—Millwall	H		
"	13—Aldershot	A		
"	17—Notts County	H		
"	27—Swindon Town	A		
Mar.	3—Luton Town	H		
"	10—Oxford United	A		
"	13—Brentford	A		
"	17—Bristol Rovers	H		
"	27—Leyton Orient	A		
"	31—Charlton Athletic	H		
April	14—Southend United	H		
"	19—Southend United	A		

N.B.—Hampshire League "A" Team matches will be played at Elm Park, on Saturday afternoons, on dates to be announced.

© "These fixtures are the copyright of the Football League Limited, and are printed by their permission under Licence No. 2. They must not be reproduced in whole or in part without permission from The Football League, Limited".

THAMES VALLEY

always at your service

- ★ for regular Bus Services in Berks, Bucks and into adjoining counties
- ★ 8, 9, 10 & 12 day fully inclusive Coach Holiday Tours in Britain and Ireland
- ★ Modern vehicles for Private Party Hire

For full information about all services apply to:-

THE THAMES VALLEY TRACTION CO LTD
83 LOWER THORN STREET · READING · TELEPHONE 54046

Travel by bus and leave parking to us

The Motorist's Shop

113 CAVERSHAM ROAD, READING

Tel: 54427/8/9

For all your Motoring needs

Open all day Saturday



Reading's Aim? . . . Division 2

Our Aim? . . . Satisfied Customers

MAKE YOUR GOAL

EDELSTON SPORTS LTD

37 OXFORD RD., READING

Phone 53826

STANDARD



TRIUMPH

Julians
OF READING

27 KINGS ROAD Tel. 52494

Distributors for over fifty years

Supporters' Club Notes

by R. Aldridge

President: Gerald L. Tutty

Chairman: Mr. L. F. Lewendon

Vice-President: F. J. C. Pole

Vice-Chairman: Mr. J. H. Brooks

Secretary: R. J. Aldridge, 71 Greenfields Rd., Reading. Tel: 84126

Good Afternoon Ladies and Gentlemen,

At our monthly meeting, held last Thursday, Alderman H. V. Kersley expressed his wish to retire from the position of Chairman to the Supporters' Club, a position he has held for some years without fear or favour. We are all sorry to learn of Alderman Kersley's failing health, which has resulted in this decision, but are pleased, however, to learn that he will remain promoter of the Jackpot.

Mr. L. F. Lewendon was appointed Chairman and Mr. J. H. Brooks Vice-Chairman. I know that you will all support our new officers and wish them both well. I know, also, you will all wish Alderman Kersley a speedy return to good health, and thank him for all he has done for our club.

Treble Chance Tickets on sale now, 6d, each, results at half-time. Pay out after the match at Supporters' Club office.

Join our Supporters' Club today.

Smith's Luxury Coaches **(READING) LTD**

SATURDAY, 5th DECEMBER

ALDERSHOT

FARE 4/9

DEPARTURE 1 p.m.

Full details from Head Office

MILL LANE, READING

- Telephone 51241

**Today's
Half
Time
Score
Board**

A	Birmingham v Chelsea
B	Burnley v Wolverhampton
C	Fulham v Blackpool
D	Tottenham v Aston Villa
E	West Ham v Leeds
F	Bolton v Portsmouth
G	Coventry v Crystal Palace
H	Ipswich v Charlton
J	Middlesbrough v Swindon
K	Northampton v Swansea
L	Preston v Leyton Orient
M	Barnsley v Port Vale
N	Bristol City v Peterborough
P	Gillingham v Bournemouth
Q	Hull v Exeter
R	QPR v Grimsby
S	Southend v Carlisle
T	Walsall v Brentford
U	Watford v Bristol Rovers
V	Workington v Oldham

The Queen's Garage

(Proprietors: H. G. B. and M. C. Wagnell)

*Part
Exchange*

*Hire
Purchase*

Insurance

B.M.C. SERVICE

OFFICIALLY APPOINTED FOR

Morris SALES & SERVICE

All other Makes can be Supplied and Serviced

QUEEN'S ROAD, READING

TELEPHONE: 53704



**WARMTH
RIGHT
ROUND
THE HOME...**

consult us on every aspect of heating, whether by solid fuel, oil, gas or electricity.

Joynes Ltd

109-117 LONDON ST
READING



BLAKES FOR ALL SPORTS
EQUIPMENT

54 MINSTER ST. READING Tel.52205



Most NEWS
Most PICTURES
Most SPORT

EVERY FRIDAY

READING STANDARD

The best fourpennyworth!