

# BRISTOL ROVERS

FOOTBALL CLUB LTD (Founded 1883)

FOOTBALL LEAGUE - THIRD DIVISION



OFFICIAL PROGRAMME 4d

BRISTOL ROVERS

v.

LUTON TOWN

Monday, April 13th, 1964

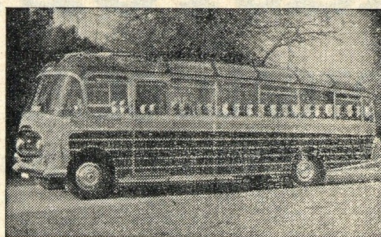
Kick-off 7.30 p.m.

BRISTOL STADIUM · EASTVILLE



Follow the  
**ROVERS**

example and  
travel with



# **WEMS** **LUXURY COACHES**

**NORTH VIEW, BRISTOL, 6**

Telephone: 36441

A FLEET OF LUXURY COACHES AVAILABLE FOR  
FOOTBALL, SKITTLE MATCHES, OUTINGS, etc.



## The promise of a superb sherry

Wherever friends gather together they'll enjoy a Regency Sherry—specially chosen and shipped from Spain by Grants of St. James's. There are altogether five superb Regency Sherries to choose from; including Regency Cream—smooth and mellow and not too sweet. 21/6 a bottle. And Regency Dry—a very fine pale, pleasantly dry sherry. 16/6 a bottle.

Grants of St. James's **REGENCY CREAM · REGENCY DRY**

## **BRISTOL ROVERS FOOTBALL CLUB LTD.**

President: HIS GRACE THE DUKE OF BEAUFORT, K.G., P.C., G.C.V.O.

### Directors:

G. W. VAUGHAN (Chairman); H. E. L. BROWN; J. P. HARE; P. W. HORT;  
D. MEARNES MILNE; D. SIMPSON; C. A. L. STEVENS.

Manager: B. J. TANN. Secretary: R. A. MOULES.

### Medical Officer:

Dr. W. T. CUSSEN, M.B., Ch.B., B.A.O.

Trainers: W. MCARTHUR; J. B. DOYLE.

Coach: R. CAMPBELL

## *Welcome — “The Hatters”*

Although still not completely free from relegation worries, Luton Town, whom we welcome to Eastville this evening, have improved their chances of avoiding the drop into the Fourth Division with some better results in recent weeks.

We should have played the Hatters here on January 4th, but at that time both clubs were still in the F.A. Cup. So the game was rearranged for March 17th. On that occasion our playing pitch was waterlogged, hence the fixture had to be put off again until this evening.

One reason why the Hatters have been so close to the foot of the table most of the season has been their lack of success on opponents' grounds. But after going an uncomfortably long time without recording an away win, on February 8th they broke their duck in a most emphatic way by winning 6—2 at Brentford. Earlier they had a 3—0 victory at Bridgwater in the first round of the F.A. Cup, but apart from that they had not chalked up an away win since October 27th, 1962.

Since their success at Brentford, the Hatters have also won at Southend by the only goal, at the beginning of last month. Their other away points have come from draws at Reading, Mansfield, Crystal Palace, and Notts County (all 1—1), Peterborough (0—0) and Coventry (3—3).

In the latter game they scored two goals in the first eight minutes, and held a 3—2 lead until two minutes from the end.

Since the start of the season Luton's manager, Mr. Bill Harvey, has signed several players in an effort to strengthen the team. The first added to the Kenilworth Road staff was winger Jimmy Weir, signed from Mansfield at the end of August. In mid-October inside-forward Ray Smith was obtained from Northampton, being followed at the end of the next month by John Reid, also an inside-forward from Northampton. Then came centre-forward John O'Rourke from Chelsea in December, and left winger Ray Whittaker from Arsenal on March 4th.

In the summer of last year the Hatters had also secured centre-half Gordon Fincham from Plymouth; Gareth Salisbury, an inside-forward from Norwich, Alan McBain, a full-back from Carlisle United, and goalkeeper Colin Tinsley from Exeter City.

A notable departure soon after the start of this season was Welsh Under-23 international centre-forward Ronnie Davies, who went to Norwich at a record fee for both clubs.

After being a regular choice until the beginning of February, Gordon Fincham lost his place at centre-half to Graham Caleb, a promising younger member of the Hatters' playing staff, who did much to strengthen the rearguard, despite his lack of experience.

Caleb dropped out of the side after being injured in the first of the Easter fixtures, however, and former England Under-23 international David Pacey was



switched from right-half to take his place, with veteran Bob Morton filling the vacancy in the middle line.

In the other wing-half position recently has been Mark Lownds, another of the promising young players at Kenilworth Road. Ex-England international Ron Baynham has been the most frequent choice in goal, with Alan McBain and ex-Evertonian John Bramwell forming a sound partnership at full-back.

After failing to score in his first three League matches John O'Rourke found his touch, and has subsequently been scoring consistently. His total prior to last Saturday's home game with Wrexham (April 11th) was 15 goals in 17 games, a very good start indeed.

He has taken over as the club's leading marksman from veteran Gordon Turner, who was presented with his third benefit cheque in February on the completion of 15 years' service with the Hatters. Though Turner has not commanded a regular first-team place this season he was recalled over Easter, taking over at inside-right from the injured Tom McKechnie.

Newcomers John Reid and Ray Whittaker—a former England Youth international—have been the most recent occupants of the inside-left and outside-left positions, with Harry Walden on the other wing. Walden returned to the side at Christmas after missing seven games with a collar-bone injury.

### SUPPORTERS' CLUB NOTES

#### LADIES AND GENTLEMEN,

Our supporters who went to the Colston Hall on Tuesday last to see the amateur boxing show which we sponsored with the Gloucester, Somerset and Wilts. (County) A.B.A. certainly enjoyed a splendid evening's entertainment. We were fortunate in having the company of the President of the Supporters' Club, His Grace the Duke of Beaufort, who presented the prizes.

Unfortunately, Geoff Bradford is having some difficulty in arranging a match for his testimonial game. Naturally, everyone in the Supporters' Club wants to help raise money for Geoff and to this end we are having some collection cards printed which we hope our members will pass around amongst their friends. If you would like to have one of these cards will you please complete the undermentioned form.

"THE PIRATE"

#### GEOFF BRADFORD TESTIMONIAL FUND

To:— E. W. H. GODFREY,  
57 MANGOTSFIELD ROAD,  
STAPLE HILL,  
BRISTOL.

From:— NAME (BLOCK CAPITALS).....

ADDRESS (BLOCK CAPITALS).....

I should like to make a collection for the above Fund and shall be glad if you will forward me a collection card.

Date..... Signed.....

THE FIRST AID COVERING AT ALL MATCHES IS MAINTAINED  
BY THE MEMBERS OF THE ST. JOHN AMBULANCE BRIGADE—  
THE SERVICES BEING ENTIRELY VOLUNTARY.

# THE BEST REPORT OF ROVERS

## HOME AND AWAY EVERY WEEK IN THE

# SUNDAY EXPRESS

### MEET THE MEN BEHIND THE SCENES

No. 5—BRIAN DOYLE  
Bristol Rovers Assistant Trainer.



Photo. by courtesy of Bristol Evening Post.

Born in Salford, Lancs., 34 years ago, Brian played for Salford Schoolboys at the age of 14 and went on to win County

honours for Lancs. Boys Clubs, gaining a full Cap for Cheshire County F.A.

Brian owes much of his soccer development to Boys' Club football, and to this day devotes as many as four nights weekly to coaching and training local youth clubs.

He joined Manchester City as an amateur, but it was with Witton Albion (Cheshire League), that he came to the notice of Stoke City, and signed for them as a professional in 1950-51. He made around 40 First Division appearances with Stoke before transferring to Exeter City. Brian captained the Devon Club during his last two seasons before joining Rovers in 1957.

Always a full-back, he made 49 League and Cup appearances before retiring as a player at the age of 32, in 1960.

Re-joined the Club Staff in 1962 upon appointment as Assistant-Trainer. Brian is one of eight former Rovers players currently on the staff and he is a firm believer in the Youth Policy. He holds F.A. qualifications in both coaching and the treatment of injuries.

Married to a Salford girl—who presented him with a daughter a fortnight ago, Brian also has a young son.



# THE NEW SWITCHABLE SHEERLINE 8

Rediffusion's elegant new 19" Sheerline 8 is fully switchable to 625-line programmes. No aerials needed. Specially designed for Rediffusion's own wired television system, this set costs only £49. Rental £5 4s. initial payment and 7/6d. a week reducing after minimum 1 year rental period. You simply switch on to enjoy a perfect picture free from fading or local interference.

## PRESENT PROGRAMME SERVICE

TWW, Westward, BBC TV plus 3 radio programmes (including Luxembourg) all from one set for only 3/9d. a week.

## 5 COLOUR FACIAS

Sheerline 8 is supplied with standard ocean green facia, or for 10/- extra choose from 4 other colours.

## PART EXCHANGE

Your old set taken in part exchange when you buy or rent a new Sheerline 8.

## MAINTENANCE SERVICE

Operates up to 10.30 p.m. every day, including Bank Holidays.

Regional Office:

BROAD PLAIN, BRISTOL 2. Tel: Bristol 23332

Showrooms at:

Bristol: 6 Merchant Street, 1. Tel: 23332

Exeter: Bampfylde Street. Tel: 76444

Exmouth: 14 Victoria Road. Tel: 3428

Paignton: 50 Torquay Road. Tel: 56321

Penzance: 23/24 Market Place. Tel: 2961

Plymouth: 8 Sawrey St. Tel: 64071

Southampton: 24/26 Lyon Street. Tel: 25321

over to 625-lines — no trouble at all



GET SET FOR 625 WITH THE

**REDIFFUSION**

WIRED VISION SERVICE



# ADVANCE INFORMATION

## INVITATION ATHLETICS MEETING

ORGANISED BY WESTBURY HARRIERS

TO TAKE PLACE AT EASTVILLE

BEFORE THE MATCH, AT HALF-TIME, AND AFTER THE MATCH

### v. READING

(Tuesday, April 21st, 1964)

7.0 p.m.	..	Senior 100 yards (3 Heats).
7.10 p.m.	..	Young Athletes—1 mile.
7.15 p.m.	..	Senior—2 miles.
<hr/>		
8.18 p.m.	..	Senior 100 yards (Final).
8.20 p.m.	..	Senior 880 yards.
<hr/>		
9.10 p.m.	..	Senior—1 mile.

The competitors will include seven International athletes and several County runners.

### STAND SEATS

There are Seats available in both Stands for all Home League games

Tickets can be obtained in advance by forwarding remittance and stamped addressed envelope to the Secretary, Bristol Rovers F.C.

PRICES:—NORTH STAND 7/6, SOUTH STAND 6/6.

(JUVENILES BOOKED IN ADVANCE—4/- and 3/6).

BOOKINGS ACCEPTED NOW FOR THE GAMES WITH—

NOTTS COUNTY—Saturday next, April 18th (3.0 p.m.)

READING—Tuesday, April 21st (7.30 p.m.)

Transfer can be obtained to either Stand on Match days by paying the difference between ground or enclosure admission at the Stand turnstiles.

A FULL-LENGTH COMMENTARY ON THIS AND ALL OTHER ROVERS' HOME GAMES IS RELAYED TO 23 HOSPITALS BY "HOSPITAL BROADCASTS."

## BRISTOL ROVERS FOOTBALL CLUB

### SUPPORT FUND

AND SUPPORT FUND No. 2

Headquarters: 478 STAPLETON ROAD, BRISTOL 5  
(Tel. No. Bristol 56221)

(AND AT EASTVILLE STADIUM ON MATCH DAYS)

TICKETS ON SALE NOW — 1/-

(Subscription 10d., Voluntary Distribution Charge 2d.)

EACH POOL OFFERS PRIZES AS UNDER

Saturday next (April 18th) (Draw at half-time)	..	£100	} EACH DAY
Monday to Friday next (April 20th to 24th)	..	1st Prize £30	
		2nd Prize £5	

PLUS 25 "Surprises" of £1 EACH

WINNING NUMBERS, Sat., 4th April to Friday, 10th April

### SUPPORT FUND

(White Tickets)

Date		Winning No.	Prize
April 4	..	14,450	£100
" 6	..	14,473	£30
		12,914	£5
" 7	..	9,019	£30
		1,242	£5
" 8	..	6,045	£30
		3,029	£5
" 9	..	12,782	£30
		16,694	£5
" 10	..	2,790	£30
		1,926	£5

PLUS  
25 "Surprises" of £1 each

### SUPPORT FUND No. 2

(Blue Tickets)

Date		Winning No.	Prize
April 4	..	11,598	£100
" 6	..	13,918	£30
		16,727	£5
" 7	..	13,690	£30
		4,060	£5
" 8	..	5,162	£30
		7,183	£5
" 9	..	13,960	£30
		2,023	£5
" 10	..	14,092	£30
		9,006	£5

PLUS  
25 "Surprises" of £1 each

### ANNOUNCEMENT

Plans are in being for a series of special "Summer Prizes" to be offered in both Pools during the close season—these will be in addition to the usual cash prizes. Watch for a further announcement.

### A REMINDER

TRESPASS ON THE PITCH BY SPECTATORS IS FORBIDDEN



## FIXTURES - 1963-64

These fixtures are the copyright of the Football League Limited, and are printed by their permission under Licence. They must not be reproduced in whole or in part without permission from the Football League Limited.

### THE FOOTBALL LEAGUE DIVISION 3

\* Rovers score first.

Date	Opponents	Ground	Result
1963			
AUG. 24	BRISTOL CITY	A	0-3
" 27	WREXHAM	H	1-1
" 31	OLDHAM ATHLETIC	H	0-1
SEPT. 7	PETERBOROUGH UTD.	A	2-2
" 11	WREXHAM	A	2-1
" 14	SOUTHEND UNITED	H	3-1
" 17	QUEEN'S PARK RANG.	H	0-0
" 21	WATFORD	A	2-3
" 28	COLCHESTER UNITED	H	3-1
" 30	QUEEN'S PARK RANG.	A	0-1
OCT. 5	MILLWALL	A	1-0
" 8	HULL CITY	H	4-0
" 12	BRENTFORD	A	5-2
" 19	CREWE ALEXANDRA	H	1-2
" 22	BARNLEY	H	1-1
" 26	CRYSTAL PALACE	A	0-1
" 29	BARNLEY	A	2-1
NOV. 2	WALSALL	H	3-0
" 9	READING	A	1-3
" 16	F.A. Cup (Round 1)		
" 23	COVENTRY CITY	A	2-4
" 30	MANSFIELD TOWN	H	3-2
DEC. 14	BRISTOL CITY	H	4-0
" 21	OLDHAM ATHLETIC	A	2-2
" 26	PORT VALE	A	0-1
" 28	PORT VALE	H	4-4

1964			
JAN. 11	PETERBOROUGH UTD.	H	2-2
" 18	SOUTHEND UNITED	A	4-3
FEB. 1	WATFORD	H	1-2
" 8	COLCHESTER UNITED	A	3-2
" 15	(5) MILLWALL	H	2-2
" 22	BRENTFORD	H	3-1
" 26	HULL CITY	A	2-0
" 29	(6) SHREWSBURY TN.	A	1-0
MAR. 7	CRYSTAL PALACE	H	1-3
" 14	(S.F.) WALSALL	A	3-2
" 21	SHREWSBURY TOWN	H	7-0
" 27	BOURNEMOUTH	A	0-1
" 28	LUTON TOWN	A	2-4
" 31	BOURNEMOUTH	H	2-3
APRIL 4	COVENTRY CITY	H	0-1
" 9	NOTTS COUNTY	A	4-3
" 11	MANSFIELD TOWN	A	0-2
" 13	LUTON TOWN	H	
" 18	NOTTS COUNTY	H	
" 21	READING	H	
" 25	CREWE ALEXANDRA	A	
" 28	BRISTOL CITY	A	
(Glos. F.A. Senior Professional Cup Final)			

MAY 2—(F.A. Cup Final)

NOTE—Figures in brackets refer to Rounds in the F.A. Cup.

### F.A. CUP

Date Opponents Ground Result

1963			
NOV. 16	BOURNEMOUTH	A	3-1
DEC. 7	COVENTRY CITY	A	2-1
JAN. 4	NORWICH CITY	H	2-1
JAN. 25	MANCHESTER UTD.	A	1-4

### FOOTBALL LEAGUE CUP

SEPT. 4	SHREWSBURY T.	A	1-1
" 23	SHREWSBURY T.	H	6-2
25	CRYSTAL PALACE	H	2-0
NOV. 4	GILLINGHAM	H	1-1
NOV. 6	GILLINGHAM	A	1-3

### FOOTBALL COMBINATION

AUG. 24	NOTTINGHAM FOREST	H	2-2
" 31	COLCHESTER UNITED	A	0-3
SEPT. 7	CARDIFF CITY	H	3-1
" 10	NORTHAMPTON TOWN	H	0-2
" 14	WEST HAM UNITED	A	1-5
" 21	NORWICH CITY	H	0-1
" 28	SHREWSBURY TOWN	A	0-4
OCT. 5	TOTTENHAM	A	1-3
" 12	MANSFIELD TOWN	H	1-4
" 19	LUTON TOWN	A	0-3
" 26	CRYSTAL PALACE	H	1-2
NOV. 2	IPSWICH TOWN	A	1-1
" 9	NOTTS COUNTY	H	0-1
" 16	PLYMOUTH ARGYLE	A	1-9
" 23	LEICESTER CITY	H	1-2
" 30	ARSENAL	A	0-6
DEC. 7	LUTON TOWN	H	3-1
" 14	NOTTINGHAM FOREST	A	0-4
" 21	COLCHESTER UNITED	H	1-2
" 28	NORTHAMPTON TN.	A	0-2

1964			
JAN. 11	CARDIFF CITY	A	1-3
" 18	WEST HAM UNITED	H	4-3
" 25	PETERBOROUGH UTD.	A	1-5
FEB. 1	NORWICH CITY	A	1-0
" 8	SHREWSBURY TOWN	H	4-3
" 22	CRYSTAL PALACE	A	1-1
" 29	IPSWICH TOWN	H	4-1
MAR. 7	NOTTS COUNTY	A	0-1
" 14	PLYMOUTH ARGYLE	H	2-2
" 21	LEICESTER CITY	A	2-5
" 27	TOTTENHAM	H	0-5
" 28	ARSENAL	H	3-2
APRIL 4	MANSFIELD TOWN	A	1-3
" 11	PETERBOROUGH UTD.	H	0-3

## BRISTOL STADIUM, (Eastville)

# Greyhound Racing at this STADIUM EVERY WEDNESDAY AND SATURDAY

at 7.30 p.m.

USUAL ATTRACTIVE PROGRAMME

### YOUTH TRIALS

Boys between the ages of 13 and 18 are invited to apply for a trial with Bristol Rovers by completing the following and posting it to Mr. R. Campbell, Chief Coach, Bristol Rovers F.C., Eastville Stadium, Bristol.  
Trials will be held before the end of the present season.

FULL NAME .....

ADDRESS .....

DATE OF BIRTH..... POSITION.....

SCHOOL (if any).....

CLUB (if any).....

HONOURS (if any).....

# ROGER ET CIE

LTD

FLORIST OF DISTINCTION

FISHPONDS and GLOUCESTER ROAD

TEL. 65-2365



## **FUTURE MATCHES AT EASTVILLE**

**TOMORROW, TUESDAY, APRIL 14th (7.30 p.m.)**  
(Bristol Inter-League Final)

**BRISTOL DOWNS LEAGUE**  
v.  
**BRISTOL INSURANCE LEAGUE**

**SATURDAY NEXT, APRIL 18th (3.0 p.m.)**  
(FOOTBALL LEAGUE, DIV. 3)

**NOTTS COUNTY**

**TUESDAY, APRIL 21st (7.30 p.m.)**  
(FOOTBALL LEAGUE, DIV. 3)

## **READING**

**INCLUDING AN INVITATION ATHLETICS MEETING**

**Organised by Westbury Harriers**

Events will take place before the game, at half-time and after the game.  
(See Page 8 for advance details of the events to be run).

# **DOUBLE DIAMOND**

**AND**

# **SKOL Lager**

*in Bottle and now on Draught*

---

**IND COOPE DRAUGHT D and BOTTLED BEERS**

---

**ALWAYS OBTAINABLE IN THE BAR**  
**AT**  
**BRISTOL ROVERS SUPPORTERS' CLUB**