

WREXHAM ASSOCIATION FOOTBALL CLUB LIMITED

President—MAJOR F. EVELYN SOAMES ; *Vice-President*—W. B. N. KINGTON, Esq., T.D.

DIRECTORS—Chairman—H. G. PHILLIPS. *Vice-Chairman*—T. H. DODD.

J. T. DAVIES, N. EDWARDS, W. H. EVANS, E. McMAHON,

J. R. NICHOLAS, F. J. TOMLINSON, T. E. WILLIAMS.

Player/Manager—K. H. BARNES.

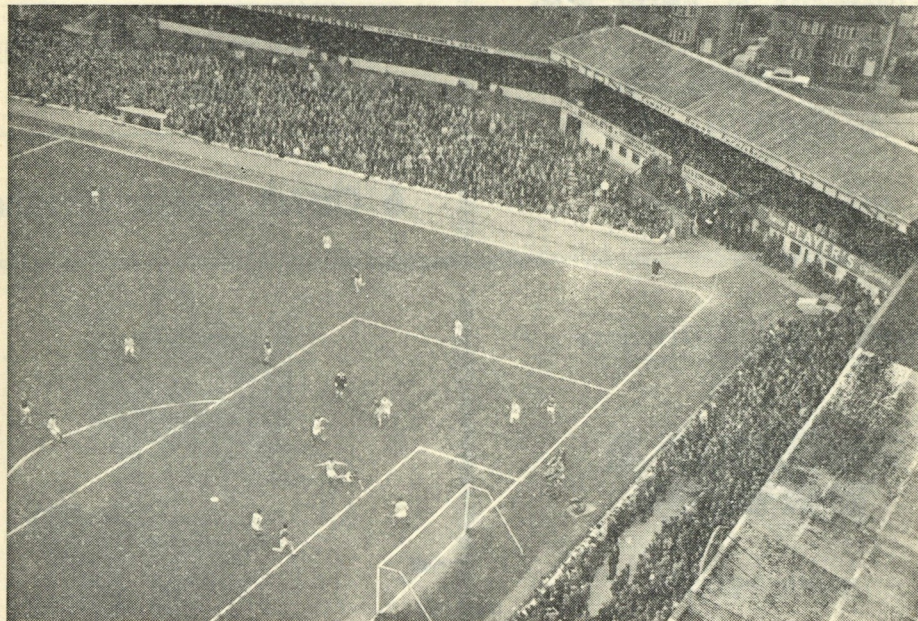
Secretary—CLIFFORD LLOYD.

Ground—RACECOURSE, WREXHAM.

Telephone—Wrexham 2414.

OFFICIAL PROGRAMME.

Price Fourpence.



By Courtesy of "Wrexham Leader"

Pic.—Alan Jones.

SATURDAY, NOVEMBER 30th, 1963.

Kick-off—3-15 p.m.

WREXHAM v. LUTON TOWN

For WINTER WARMTH try our—
BEST STAFFS & NORTH WALES COALS

Anthracite, Phurnacite, Coalite and
All Smokeless Fuels.

J. SAUNDERS & SONS LTD.

HILL STREET
WREXHAM

Telephone—Wrexham 3943.

Cosmetics and Perfumery

**COOPER &
DAVIES**

HAIR STYLISTS

Central Arcade, Hope Street
WREXHAM

Telephone—Wrexham 3354.

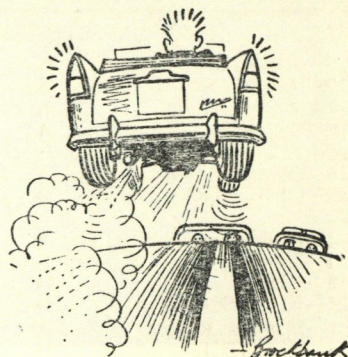
HORTONS

Alarm Clocks
Watch Repairs

Jewellery Repairs and Engravings

Call and See our Large Selection of—
Wedding Gifts

6 Church Street, Wrexham



Better Drivers ...

never drive at such a speed that
they cannot pull up well within the
distance they can see to be clear.

This Space kindly donated by—
Lloyd Evans & Son. Ltd., Wrexham.

THIRD DIVISION FIXTURES.

Nov.	27—(1) ALTRINCHAM	...	H	3 — 0
	30—LUTON	...	H	
Dec.	7—(2) HULL CITY	...	H	
	14—PETERBOROUGH	...	H	
	21—Southend	...	A	
	26—SHREWSBURY	...	H	
	28—Shrewsbury	...	A	
1964—				
Jan.	4—(3) WALSALL	...	H	
	11—WATFORD	...	H	
	18—Colchester	...	A	
	25—Bristol City	...	A	
Feb.	1—MILLWALL	...	H	
	8—Barnsley	...	A	
	15—(5) HULL CITY	...	H	
	22—COVENTRY	...	H	
	29—Mansfield	...	A	
Mar.	7—NOTTS COUNTY	...	H	
	14—(S.F.) Crewe	...	A	
	20—MANSFIELD	...	H	
	27—Queens Park Rangers	...	A	
	28—Walsall	...	A	
	30—QUEENS PARK R.	...	H	

CHESHIRE LEAGUE FIXTURES.

Nov.	23—RUNCORN	...	H	3 — 1
	30—Wigan Athletic	...	A	
Dec.	7—Witton Albion	...	A	
	14—Stalybridge Celtic	...	A	
	21—ELLESMERE PORT T H	...	A	
	26—Oswestry Town	...	A	
	28—OSWESTRY TOWN	...	H	
1964—				
Jan.	4—Hyde United	...	A	
	11—Runcorn	...	A	
	18—RHYL	...	H	
	25—BUXTON	...	H	
Feb.	1—Stafford Rangers	...	A	
	8—CHESTER	...	H	
	15—Bangor City	...	A	
	22—Buxton	...	A	
	29—NORTHWICH V.	...	H	
Mar.	7—Altr'incham	...	A	
	14—HYDE UNITED	...	H	
	21—Sankeys	...	A	
	27—TRANMERE	...	H	
	28—CONGLETON	...	H	
	30—Frickley Colliery	...	A	

For Fish and Chip Meals try

TURNER'S FISH CAFE

Established over 74 Years

OPEN ALL DAY UNTIL 6-0 p.m.

ONLY ONE ADDRESS—

17 Abbot Street, Wrexham

FURNITURE REMOVAL —

LOCAL AND ANY DISTANCE —
ESTIMATES FREE

Thomas Bros. (Removals) Ltd.

50 Salop Road, Wrexham

Telephones—Wrexham 2670 and 2673

Why not travel to AWAY MATCHES
With those who TAKE THE TEAM

— TRY —

PHILLIPS COACHES

Rhostyllen

VINCENT GREENHOUS LTD.

On your way home from the match
call into our Showroom and inspect the
NEW VAUXHALL VIVA

Telephone—Wrexham 3431.

SECRETARY'S NOTES—

FOR the first time ever, Luton Town are visitors to the Racecourse and to officials, players and supporters of that Club we extend a warm welcome. Some of our fans may know that a member of their playing staff this season is our ex-player Gareth Salisbury, although he is not in their selected team for this afternoon.

Within a space of eight days we stage three important games at this ground and I would like to give you the following information regarding the three. Next Wednesday is the Under 23's International between Wales and Scotland. Only Stand Tickets are available and the prices are:—Centre and Plas Coch Stands 12/6d. (tip-up seats) and 10/- (forms); Crispin Lane Stand 7/6d. Season Ticket holders cannot claim their usual seats. A week today is the Hull City Cup-Tie. Season Ticket holders MUST claim their tickets by the previous Thursday and I repeat that THIS DIRECTION MUST BE ADHERED TO. After the Thursday all Season Tickets that have not been claimed will be sold to firstcomers. On Wednesday week is the European Cup-Tie between Borough United and Slovan Bratislava. All Stand and Enclosure tickets have been sold but admission to the ground, price 3/-, will be at the turnstile on the day

This afternoon the Reserves travel to Wigan Athletic in the Cheshire County League, the 'A' Team have a free day in the Welsh League and the 'B' Team entertain Denbigh Town in the Welsh Amateur Cup.

A note regarding the Development Fund. Bingo is held every Monday and Thursday (with a chance of winning £1,000 each session) at the Fare Way and on Friday and Saturday (with another £1,000 each time) at the Parciau. And every Saturday there is the Dance at the Church House.

ONE MOST IMPORTANT LAST WORD. BY AN F.A. RULING NEXT SATURDAY'S KICK-OFF TIME VERSUS HULL CITY IS 3 p.m. and NOT the usual 3-15. Please let as many of your friends as possible know of this.

TOM WILLIAMS

Member of the Boot
Traders' Association.

BOOT and SHOE REPAIRER

*Quality and Craftsmanship
with Personal Service*

Garden Village, Wrexham

THORNTONS

*RADIO and ELECTRICAL ENGINEERS
TELEVISION SPECIALISTS*

Telephone—Wrexham 2510.

62b REGENT STREET also

**4 ODEON BUILDINGS,
BROOK ST., WREXHAM.**

J. T. DAVIES & SON

*HIGH-CLASS GROCERY &
PROVISION MERCHANTS*

*BAKERS and
CONFECTIONERS*

Rhosddu Road — Wrexham

Telephone—Wrexham 2338.

For ANYTHING IN WOOD—

WREXHAM SAWMILLS

(B. MOSS).

*Suppliers of Home-Grown Timbers sawn
or in the Log.*

Rivulet Road, Wrexham

Telephone—Wrexham 3775.

and at Llandegla

Telephone—Llandegla 204.

KINGCRETE PRODUCTS

PRECAST
CONCRETE
SPECIALISTS

Telephone—Rossett 375.

BURTON,
ROSSETT,
Nr. WREXHAM

We Have a Concrete Proposal !

*Consult us for all your—
Concrete Requirements*

Covered Ways : Wind Breaks
'Bus Shelters : Park Shelters
Raised Silos : Garages : Garden Sheds
Coal Bunkers : Post and Panel Walling
Fencing : Lintels : Kerbs : Posts, Etc.

PEN PORTRAITS OF SOME OF LUTON TOWN FOOTBALL CLUB PLAYERS.

BAYNHAM — Has been with Luton Town since 1951. Has represented England on several occasions. Played for the Football League on two occasions and also for England 'B' team.

MORTON—Local born and has been with the Club since 1948. Has played for England 'B' once. Was chosen as Reserve for England at Wembley in 1955 and again when they played Ireland in 1958. Has played in most positions for Luton.

BRAMWELL—Joined Luton in October 1960 from Everton and has proved a very capable player worthy to be considered for International honours.

McGUFFIE—Signed professional forms for Luton in 1954. Has made quite a number of appearances in the first team these last three seasons. Is an excellent distributor of the ball with a flare for coming through to have a shot at goal.

FINCHAM—Transferred from Leicester to Plymouth four years ago and then to Luton in July 1963. Is the dominating centre half we hope will strengthen our defence.

LOWNDS—Signed from Durham in January 1960. Became a full-timer on completion of his apprenticeship with a local firm. A wing half who likes to get on with the game.

FAIRCHILD—Came to Luton from Lowestoft in November 1960. Can be brilliant at times which makes us have great hopes for the future.

TURNER—Came to Luton as a wing half upon his demob. from the Navy but found his true position in the No. 8 shirt. Represented the English League against the Scottish League in 1955 and also played for the F.A. XI versus the Army in 1958. The Town's leading goal-scorer for eight seasons, he is a skilled player with a tremendous shot.

McKECHNIE—Born Glasgow and came here direct from Rob Roy (Scotland) at the end of season 1960-61. Played consistently in the first team the past two seasons, except when injury prevented him from playing.

JARDINE—Born in Edinburgh. Played for Dundee for two seasons before coming to Luton at the end of season 1960-61. Has shown promise since he arrived there.

Why not call at the

EGERTON WINE LODGE
ADJOINING KING STREET 'BUS STATION

—so easy to take a bottle HOME

CAMBRIAN SCHOOL OF MOTORING

W R E X H A M

(Colours—Red Shirts, White Facings, White Shorts).

RIGHT
LEFT

¹
JONES (A)

²
ROBERTSON

⁴
MYERSCOUGH

⁷
MAYERS

⁵
FOX

⁸
GRIFFITHS

⁹
PHYTHIAN


¹¹
BENT

³
McGILL

⁶
POWELL

¹⁰
METCALF

REFeree—
Mr. S. J. Kayley,
Preston.



LINESMEN—
Red Flag—
Mr. C. P. Hutchinson, Leeds.
Orange Flag—
Mr. H. Ashton, St. Helens.

¹¹
JARDINE

⁶
LOWNDS

³
BRAMWELL

¹⁰
McKECHNIE

⁵
FINCHAM

¹
BAYNHAM

⁹
TURNER

⁸
SMITH

²
MORTON

⁷
FAIRCHILD

⁴
McGUFFIE

LUTON TOWN

(Colours—White Shirts, Black Shorts).

LEFT
RIGHT

ELWY HOUSE, KING STREET, WREXHAM. Phone 2891

HOME COMFORT AT REASONABLE COST

ABBOT FURNISHERS

ABBOT STREET AND KING STREET, WREXHAM

FULLY GUARANTEED—

FURNITURE : BEDDING : CARPETS : TEXTILES

Telephone—Wrexham 3951.

WREXHAM OFFICE EQUIPMENT CO. LTD.

4 EGERTON STREET, WREXHAM

TYPEWRITERS, DUPLICATORS, ADDING MACHINES, CASH TILLS
BOUGHT/SOLD/EXCHANGED/REPAIRED/HIRED

EVERYTHING FOR THE OFFICE & SCHOOLS — ARTIST'S EQUIPMENT, OILS, Etc.

Telephone—Wrexham 2687.

For **MORRIS**

R. PRICE

PENRHYN GARAGE,
NEW BROUGHTON.

Telephone—Wrexham 3173.

AFTER SALES SERVICE

Satisfaction Always Guaranteed
BY

Electrical Services (Wxm.) Ltd.

18 Maesgwyn Road, Wrexham

Tels.—2008—2490.

Personally Directed by—

AUSTIN EAMES AND OSWALD JONES

JOHN HUGHES

(Contractors) Limited

12a, HOLT STREET

W R E X H A M

require a

Senior Shorthand Typist

to take up duties towards
the end of December

Telephone—Wrexham 2478.

KEN BARNES TALKING—

AT the fourth time of asking, thanks to fog, a draw and a waterlogged pitch, we are through to the second round of the F.A. Cup and I hope that our fairly easy 3—0 defeat of Altrincham on Wednesday might prove the incentive the boys require to lift us out of our desperate League position. Believe me, the position worries us all. We realise that it has been brought about by the culmination of various factors—bad play, bad luck, bad injuries are just three that come to mind—but other Clubs have been through the same trying times as we are experiencing. One of them happen to be our visitors this afternoon. It doesn't seem so very long ago that Luton Town were riding high in the First Division and were playing in the Cup Final. Even this season they are not in a much healthier position than our Club and a victory this afternoon for us, though not raising us from the bottom rung in the Table, would bring us two points nearer our fellow-worriers.

It is pleasing to me that our support is still good in these hard times—both vocally and numerically. It was hard on our supporters from the rural areas to have to make a fruitless journey last Monday evening (taking into account the cost of fares these days) and I was pleasantly surprised at seeing a 9,000-odd gate on Wednesday. The vocal encouragement was pleasing too.

A most pleasant duty now—to congratulate Arfon Griffiths on his selection as Welsh outside right in the Under-23 International against Scotland here on Wednesday. On behalf of everyone at the Club I wish him well for the game—he's certainly deserved this honour and I am sure he will shortly be gaining his full cap. I noted that Brian Whitehouse scored for Crystal Palace on his debut—good luck, Brian, for the future.

I have been asked to plug next Saturday's kick-off time against Hull City. Remember it is at 3-0 p.m. and NOT the usual 3-15 p.m. Don't forget the cheering this afternoon. *I shall be waiting to hear from you !!!!*

INVEST IN WREXHAM BOROUGH

- ★ 5½% Two to Ten Years
- ★ Shorter Periods By Arrangement
- ★ Absolute Security With No Expense
- ★ Minimum Investment £100

Apply BOROUGH TREASURER, GUILDHALL, WREXHAM.

A WINNER—HOME OR AWAY

THE LEAGUE DIVISION THREE

Coventry	21	14	4	3	53	23	32
Crystal Palace	21	12	5	4	39	25	29
Oldham	21	12	4	5	39	27	28
Bournemouth	21	11	4	6	33	18	26
Brentford	21	10	5	6	52	34	25
Bristol City	21	10	5	6	36	26	25
Reading	21	10	5	6	27	25	25
Shrewsbury	21	10	5	6	33	34	25
Watford	21	10	4	7	35	29	24
Port Vale	21	9	4	8	26	21	22
Colchester	21	7	8	6	33	29	22
Hull	19	8	6	5	30	27	22
Mansfield	21	8	6	7	30	28	22
Bristol Rovers	20	8	4	8	33	28	20
Queens P.R.	21	9	2	10	32	35	20
Walsall	21	6	8	7	23	30	20
Peterborough	21	8	3	10	39	36	19
Southend	21	5	7	9	30	39	17
Crewe	21	5	6	10	21	33	16
Barnsley	21	4	7	10	30	45	15
Luton	21	4	6	11	22	39	14
Notts County	20	5	2	13	19	35	12
Millwall	21	4	4	13	17	37	12
Wrexham	21	3	2	16	36	65	8

HALF-TIME SCORES.

A—BLACKBURN v. ARSENAL
B—LIVERPOOL v. BURNLEY
C—SHEFFIELD U. v. M'CHESTER U.
D—WOLVES v. EVERTON
E—CARDIFF v. PLYMOUTH
F—LEEDS v. SWANSEA
G—SUNDERLAND v. SOUTHAMPTON
H—BARNLEY v. CRYSTAL PALACE
I—HULL v. WALSALL
J—QUEENS P.R. v. COVENTRY
K—PETERBOROUGH v. SHREWSBURY
L—TORQUAY v. CHESTER

The FARE WAY RESTAURANT

QUALITY AND QUICK SERVICE

Outside Catering for Balls, Dances and Dinners. Banquets and Weddings a Speciality. Distance no Object.

APPLY—Mrs. Megan Evans, The Fare Way, King Street, Wrexham. Telephone—4687

E. R. HUGHES

The BON Ltd.

TOWN HILL, WREXHAM

WHERE THE BEST MEN SHOP

also

GROVE PARK BOYS SCHOOL CLOTHING, ETC.

Telephone—Wrexham 2686

WREXHAM SCOOTERS

(W. BARON).

NORTH WALES' LEADING SCOOTER SPECIALISTS

28 King Street, Wrexham

Telephone—Wrexham 2495.

Accessories : Spares : Sales :
Service : Satisfaction

Telephones—

(9 to 5 p.m.)—Chester 25728. Night 35583

NORMAN MULVEY LTD.

For — Specialist Diesel Fuel Injection Services & Hire of Bedford Dormobile Caravans

3 & 4 COAL EXCHANGE, CHESTER

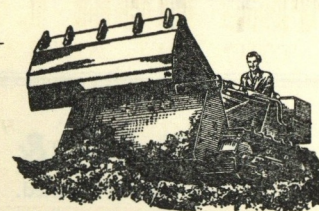
WREXHAM A.F.C. SUPPORTERS' CLUB NOTES—by "Cee Tee."

At long last there is a glimmer of light shining through the darkness which has overshadowed our Club for weeks. Granted we have managed to break through against a non-League Club, but even so, it should help to regain some of the lost confidence. I for one, began to wonder, whether we should have to employ a "Witch Doctor" to break the Hoodoo which has been hanging over us.

This afternoon we welcome Luton Town A.F.C. to the 'Course and we fervently hope that our lads will break through further, by obtaining their first win in a League match for what seems an age. With your help from the terraces, I think they can turn the corner and start to climb up the long "straight" once again.

It is gratifying to know that, after writing in the Programme Notes about the advantages of becoming a member of the Supporters' Club, many more have joined after realizing how good the Insurance Scheme is. To those of you who have not yet given it a thought, I say "Don't leave it too late, it may be your turn next."

Telephone—
Wrexham
2744.



HOLMES PLANT HIRE

SITE CLEARING, EXCAVATION,
BULLDOZING, DITCHING, Etc.

The Grange, New Road, Rhosddu.

HENS and CHICKENS
wanted—

BEST PRICES—
Weighed and cash paid on Farm

E. Williams

Snowhill, Bulchgwyn,
Near Wrexham.

Telephone—Coedpoeth 488.

Safe Safely Without Worry
with the

BOROUGH BUILDING SOCIETY

You can start with as little as 6d.
PLEASE ASK FOR LEAFLETS

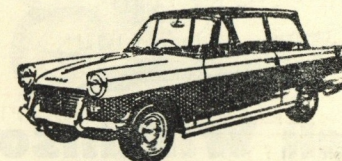
Particulars from Local Branch—

8 EGERTON STREET, WREXHAM

Agencies throughout North Wales

Member of the Building Societies
Association.

T. C. JONES & SON



Your [STANDARD-TRIUMPH Dealer

Premier Garage, Coedpoeth, Nr. Wrexham

Telephone—Coedpoeth 238.

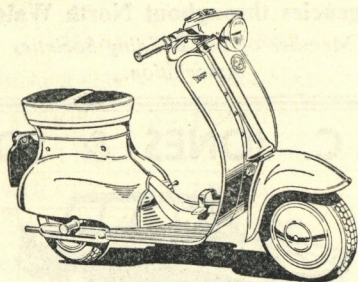
Drink and enjoy . . .



. . . the popular beer

Main TRIUMPH DEALER—

*We have now been appointed the Main
Triumph Spares Stockist — Trade and
Retail for North Wales.*



Jack Wilkinson
Opposite Odeon - Wrexham

Telephone—Wrexham 2642.

KNOWLES & CO.

(Wrexham) Limited.

Complete Sports Outfitters

*Suppliers to F.A. of Wales,
Wrexham A.F.C., and many
Leading Football League
Clubs.*

56 CHESTER STREET
WREXHAM

Telephone—Wrexham 2193.