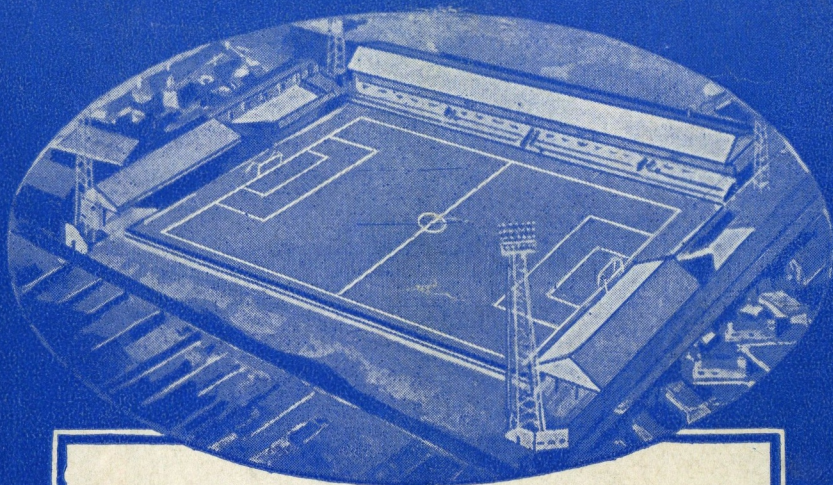




PETERBOROUGH UNITED



Saturday, 2nd November, 1963

FOOTBALL LEAGUE—THIRD DIVISION

LUTON TOWN

Kick-off 3.15 p.m.

4d

OFFICIAL

PROGRAMME

See how 'POSH'

MARSHALLS

can get !



*Have a Service while you
watch the match*

Telephone

7 OUNDLE ROAD
PETERBOROUGH

66011

GEORGE HOWORTH (Tyre Services) LTD

The Tyre People

WHEEL BALANCING

FREE FITTING

Easiest Terms

- No Interest

- Six Months to Pay

ALL OUR FACILITIES AVAILABLE THROUGH YOUR LOCAL GARAGE

165 CROMWELL ROAD

PETERBOROUGH

PHONE: PETERBOROUGH 4064

CLUB CHATTER

How can one begin to understand football? Last Monday evening at Colchester we lost 4-1, but on the Monday previously we had beaten the same team 4-0 at London-road. At London-road we gave a real convincing display. The score in no shape or form flattered us. Mr. Joe Mercer stated that it was the most convincing display he had seen for quite some time, and everyone was in agreement. However, at Colchester, we still played the same brand of football, but the goals would not come. Even the most biased Colchester supporter stated that the score told a lie. Unfortunately, this is happening all too frequently. We are being thought of as a bad team, but in view of some of our performances, for instance, against Middlesbrough, Hull City twice, Wrexham, Notts County, Bournemouth at home, Watford away, Millwall away and Colchester at home, how can one say that?

We are the most aggravating team possible at the moment, simply because we have too many players striking a bad game together. It is not unusual for two players to play badly, but when one gets six or seven, then this is trouble. Even then it is hard to know what to do in the constructive sense, for if the team were knocked about and players dropped wholesale, this could go on indefinitely. One has to have strength to know that, in the main, these players on our staff can do it. They are going through a

strange patch, but this will change. When it does change, a more consistent run of results can be anticipated. Every team in the country has had this, and if they are good enough they have come through. I believe the players at Peterborough United have to believe in themselves a little more, and the lack of confidence will be overcome.

I know it is the most natural feeling to go off at a tangent when things are not going too smoothly, but it has been proved and proved yet again that panic, when there is no need to panic, is disastrous. I know the team could be doing better, but we are five points behind the second team in the league, and when this run changes, and we can have a few victories strung together, we shall be up among them when it counts, and that is at the end of the season.

SPECIAL NOTICE

F.A. CHALLENGE CUP v. WATFORD
NOVEMBER 16th, 1963, Kick-off 3 p.m.

Stand Season Ticket Holders are reminded that today is the last day for obtaining Tickets for the above Match. All unclaimed tickets will be included in the allocation to the general public next Saturday. These tickets will be on sale to spectators paying for admission to Stand "A" on Saturday, November 9th, one per person subject to availability.

FOOTBALL LEAGUE'S JUBILEE BOOK

Histories are something dull. No one will say this of THE FOOTBALL LEAGUE'S JUBILEE BOOK just issued to mark the pioneer competi-

MAKE YOUR "GOAL"

McCONNELL'S THE TOBACCONISTS

44 COWGATE, PETERBOROUGH

ALSO AT 9 WESTGATE, PETERBOROUGH AND MARKET PLACE, MARCH

Phone: Peterborough 2118, March 3108

Wholesale and Retail



PEACH'S FLOWER AND
GARDEN SHOP

FOR . . . The Choicest Flowers :: The Perfect Wedding Bouquet
Seeds :: Lawn Grass Seeds :: and All Garden Supplies

19/21 BROADWAY

PETERBOROUGH

FOR
**READY MIXED
CONCRETE**

PETERBOROUGH 68355-6

P'boro Mixed Concrete Ltd

66 FENGATE

P OSH"
RECAST
RESTRESSED
CONCRETE
PRODUCTS

PHONE: MARKET DEEPING 2301

DOW-MAC (Products) LTD.
TALLINGTON, STAMFORD, Lincs.

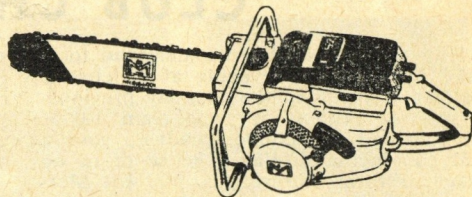
J. H. B. NORTH & SON

Limited

BROADWAY : PETERBOROUGH

2708 3697

THE CHAIN SAW SPECIALISTS



Demonstrations

Full repair facilities including chain sharpening

HALF-TIME SCOREBOARD

A—Wolves v. Manchester U.
B—West Ham v. West Brom.
C—Tottenham v. Fulham
D—Stoke v. Burnley
E—Sheffield U. v. Arsenal
F—Nottm. F. v. Ipswich
G—Liverpool v. Leicester
H—Chelsea v. Birmingham
I—Blackpool v. Everton
J—Blackburn v. Sheffield W.
K—A. Villa v. Bolton
L—Barnsey v. Bristol C.
M—Bournemouth v. Notts. Co.

N—Bristol R. v. Walsall
O—Colchester v. Brentford
P—Hull v. Port Vale
Q—Millwall v. Shrewsbury
R—Oldham v. Reading
S—Swindon v. Southampton
T—Q.P.R. v. Crystal Palace
U—Southend v. Coventry
V—Watford v. Mansfield
W—Wrexham v. Crewe
X—Mansfield v. Peterborough Res.
Y—Northampton v. Preston
Z—Norwich v. Newcastle

TIMBER
ROOFING FELT
ASBESTOS
VENEERED PLYWOOD &
IMPORTED HARDBOARD
STEEL WINDOWS

ADHESIVES
REVEDED HARDBOARD
NEW FENCING
OAK POSTS
LAMINATED PLASTICS
DOORS

In fact for all your
building and do-it-yourself
requirements call and see
us at

108 BURGHEY ROAD
or ring 5874/5

PROMPT DELIVERY SERVICE

INVESTMENTS **ADVANCES**
**PETERBOROUGH
BUILDING SOCIETY**

5 MARKET PLACE • PETERBOROUGH

• Phone 5505 •



PETERBOROUGH UNITED FOOTBALL CLUB LIMITED
LONDON ROAD GROUND, PETERBOROUGH

Phone 3623

NORTHANTS

Full Members, The Football Association
Associate Members, The Football League
Members, The Football Combination; Peterborough League

Midland League Champions

SEASONS 1955-6, 1956-7, 1957-8, 1958-9, 1959-60

Football League Fourth Division Champions 1960-61

Northants Senior Cup Winners, 1960-1, 1961-2

Norfolk Invitation Cup Winners, 1961-2

President—W. HEAD, Esq.

Chairman—T. H. PEAKE, Esq.

Vice-Chairman—V. J. GRANGE, Esq.

Directors—C. L. PALMER, Esq., W. PECK, Esq., H. TRELFA, Esq.
F. TERRELL, Esq., J. H. VERNUM, Esq., G. TAYLOR, Esq.

Hon. Consulting Orthopaedic Surgeon—Mr. NOEL SMITH, F.R.C.S.

Hon. Medical Adviser—Dr. J. W. T. SHEPHERD

Honorary Solicitor—R. RIGBY, M.B.E.

Honorary Dental Surgeon—E. C. PATTERSON, Esq.

Manager—Mr. J. FAIRBROTHER

Secretary and Treasurer—Mr. H. PEPPER

Reg. Office—LONDON ROAD GROUND, PETERBOROUGH

DUNLOP "C.41" TYRES
from
T. J. TYRE SERVICE
"TYRES ON EASY PAYMENT"
Open Six Days a Week
Also Sunday mornings
at
CHAPEL ST. and NEW ROAD
Phone PETERBOROUGH 2931

PROVED OVER 30 YEARS
IT PAYS TO GO DIRECT TO
THE  PEOPLE
200 IN STOCK

A.1

NEW CARS
VANS
TRUCKS

USED VEHICLES
ALL MAKES

GUARANTEED

Genuine Spare Parts & Accessories
Super Service
Agricultural and Industrial Machinery

Self Drive and Contract Hire.
Driving Tuition

PETERBOROUGH MOTORS LTD
CAR & COMMERCIAL DIVISION AGRICULTURAL DIVISION
27-39 NEW ROAD OXNEY ROAD
TEL: 5271 PETERBOROUGH TEL: 68393

Always say
GREETHAM LIME
For finest Testing and Spreading Service
Phone: MARKET DEEPING 2355 (3 lines)
or write
SANDYLANDS, MAXEY, PETERBOROUGH

Referee—Mr. A. W. SPARLING (Grimsby) **Peterborough United** Colours—Royal Blue Shirts, White Shorts

RIGHT DUFF LEFT

SINGLETON SISSONS

COOPER RANKMORE PEARCE

MOULDEN HOROBIN DOUGAN SMITH McNAMEE

SHAW'S COACHES
MAXEY, Near PETERBOROUGH
Tel. MARKET DEEPING 2224
ANY DISTANCE — ANY TIME

Dancing at the ★★★
★★★ **CORN EXCHANGE**
EVERY SATURDAY 8-11.45 p.m.

JARDINE McKECHNIE TURNER SMITH FAIRCHILD

McGUFFIE FINCHAM PACEY

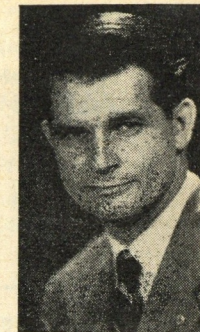
BRAMWELL MORTON

BAYNHAM
Luton Town

Colours—White Shirts, Black Shorts

Linesmen—Mr. D. J. Farrow (Red flag)
Mr. A. D. Hirst (Yellow flag)

follow
MOWFORTH
in the
Peterborough Advertiser
&
Evening Telegraph



HOLIDAY ABROAD?
PASSPORT PHOTOS
THREE FOR 7/6
NO FUSS, NO APPOINTMENT NECESSARY
Taken by 4 p.m. one day—
Ready next day at 11.30 a.m.
SPECIAL URGENT SERVICE WHEN REQUIRED
BRITANNIA STUDIOS
15A LONG CAUSEWAY

RECORDS
—POPS & CLASSICS
—NEW REDUCED PRICES
—OPEN 8.45 a.m. to 6 p.m. DAILY
—COURTEOUS ATTENTION
—LISTENING BOOTHS

TAPE Recorders
by all leading makers including
GRUNDIG SONY PHILIPS
FERROGRAPH SIMON - VORTEXION ETC.
Specialist repair service prompt and efficient.
Stenorette and other dictating machines serviced by contract for large firms.

CAMPKINS RECORD SHOP
15 Long Causeway
Telephone 5643 Telephone 5643

TROLLOPES
(Outfitters) LTD.
Ladies', Gentlemen's & Children's Complete Outfitters
Westgate - Queen St. - Peterborough

ROBERTSONS
46-48 Cowgate, Peterborough 2374
Sports Goods, Toys, Cycles, Radio
Television, Electrical Appliances

Saturday November 9th, 1963
COVENTRY CITY v UNITED
COVENTRY

Whittlesey dep. 11.54 a.m. 11/6
PETERBOROUGH EAST dep. 12.5 p.m. 10/6
Arrive 1.45 p.m. Return 6.20 p.m. LIMITED ACCOMMODATION. BOOK IN ADVANCE.

BRITISH RAILWAYS

BOURNE CLEANERS

256 LINCOLN ROAD
MILLFIELD, PETERBOROUGH
FOR
24-HOUR DRY CLEANING SERVICE
And the New 24-hour
SHIRT SERVICE
only 1/6d. each

You too can look "POSH" if you
get your Sports Equipment from

WRIGHT'S SPORTS SHOP

36 Park Road — Peterborough
PHONE 5335
SUPPLIERS TO PETERBOROUGH UNITED

For all Sports Equipment INDOOR and OUTDOOR, try—

THE PETERBOROUGH & DISTRICT CO-OPERATIVE SOCIETY LIMITED

Sports Footwear of every kind available in the **Footwear Department**,
including the famous "Stanley Matthews" Football Boot

SUPPORTERS' CLUB NOTES

We look forward to having the Luton team and some of their supporters with us today, and, of course, to Bill Harvey, the manager of Luton, and Ray Smith, it will be just a case of coming home. Not so long ago since we had Ray with us, but we have to go back to Sam Haden's days for the time when Bill Harvey was a player for the Posh. By the way, we are still not enrolling members of the Supporters' Club in anything like the numbers we want, so why not join today?

TOM SHARP, Secretary.

DONALDS

Limited

BURGHLEY ROAD
PETERBOROUGH

Present This Week's
**FIRST XI
CARS**

ALL VALUE FOR MONEY

Phone 5787/8/9

1963 MG 1100 4-door De Luxe
saloon, old English white, beige,
choice of two 'Posh' colours.
Only £675

1962 Morris Oxford saloons.
choice of two 'Posh' colours.
Only £575

1962 Morris 1000 2-door De Luxe
saloon, in Trafalgar blue with
matching trim. Only £485

1961 Singer Gazelle Convertible
in pippin red, foam white, heat-
er, taxed. Only £485

1961 Austin A55 Cambridge sa-
loon, in blue with grey trim,
for five supporters. Only £525

1960 Hillman Minx de Luxe sa-
loon in charcoal, Windsor blue,
heater, will average 30 mpg. £435

1956 Morris Cowley Saloon in
beige with maroon trim, heat-
er, supporter would soon save
this in bus fares. Only £245

1959 Peugeot 403 saloon in blue,
radio, seat belts, etc., an inter-
national from overseas. Only £375

1959 Ford Anglia saloon, New-
mark grey, heater, a great per-
former. Only £295

1958 Austin A55 Cambridge sa-
loons, choice of two, black and
grey, top of the bill perform-
ers, in any league. Only £345

1958 (Nov.) Vauxhall Victor
Super saloon, in lime green,
heater, etc., as smooth as the
playing pitch. Only £275

PETERBOROUGH TRANSPORT COMPANY

(Charles Vaughan)

We cover the British Isles and offer the following facilities:—

SHIPPING AGENCY : TRANSPORT CLEARING HOUSE : INSURANCE

8,500—10,000 ton clearance per month

44 BRIDGE STREET, PETERBOROUGH

TELEPHONE 67141/2/3

AND

Telephone 5010 and 2452

KING'S LYNN

71 FRIAR STREET

FOR YOUR NEW

Lambretta

VISIT

Peterborough Scooters

Limited

Your 100 per cent Scooter Dealers
All Lambretta Spares and Accessories
FREE TUITION : PART EXCHANGES
TERMS : INSURANCE
36 LINCOLN ROAD
Phone Peterborough 67071

CLARKE & HOBBS

Limited

5-7 LINCOLN ROAD
PETERBOROUGH

FIREPLACES
SINK UNITS
BATHROOM SUITES

VISIT OUR SHOWROOMS —
OPEN ALL DAY SATURDAY

Club Chatter—cont.

tion's 75th birthday. It is a thriller with about
fifty illustrations—some in colour—to light up
great teams, games and players.

The highlights and humours of the early days
are summarised: the growth to 92 clubs is cov-
ered in a fascinating cavalcade of the League's
star performers. A chapter on the League's out-
standing teams explains why these sides are
placed on the pedestal. A chapter on pioneers
cites the players who made new moves—men
like Alex James (Arsenal), Wm. R. ("Dixie")
Dean (Everton), Don Revie (Manchester City),
and also Billy McCracken (Newcastle United),
whose off-side tactics revolutionised the Game.

This Jubilee Book has been compiled by Ivan
Sharpe (with half a century of experience on and
off the field as background) with the collabora-
tion of Alan Hardaker, the Football League Sec-
retary, and the Headquarters Staff who are re-
sponsible for the concluding statistical section
containing every League match result since the
last War.

This colourful panorama tells young and old
all they ought to know about the League that
showed the way for the rest of the world.

Price 25s. Publishers: Stanley Paul and Co.
On sale: November 11th.

PEN PORTRAITS

LUTON TOWN FOOTBALL CLUB

Ron Baynham (goalkeeper). Has been with
Luton Town since 1951. Was secured from Wor-
cester City. He has represented England on sev-
eral occasions. Played for the Football League
on two occasions

John Bramwell (full back). Joined Luton in
October, 1960, from Everton and has proved a

very capable player worthy to be considered for
International honours.

Michael Fairchild (outside right). Came to
Luton from Lowestoft in November, 1960. Can
be brilliant at times which makes us have great
hopes for the future.

Gordon Fincham (centre half). Transferred from
Leicester to Plymouth four years ago and then
to Luton in July, 1963.

Fred Jardine (outside left). Born in Edinburgh.
Played for Dundee for two seasons before com-
ing to Luton at the end of season 1960-61.

Alwyn McGuffie (wing half or inside forward).
Signed professional forms for Luton in Septem-
ber, 1954. Has made quite a number of appear-
ances in the first team these last three seasons.

Ray Smith (inside left). Ex-Peterborough Un-
ited player. Recently transferred from North-
ampton.

Thomas McKechnie (inside forward). Born
Glasgow and came here direct from Rob Roy
(Scotland) at the end of season 1960-61. Played
consistently in the first team the past two sea-
sons.

Bob Morton (wing half). Local born and has
been with the club since 1948. Played for Eng-
land "B" once and the Football Combination
versus the Dutch XI, on two occasions.

David Pacey (wing half). Born in Luton. sign-
ed for the club in 1956. Has played for the F.A.
versus the R.A.F. and was also a member of the
England under 23 team against Germany and
Italy.

Gordon Turner (centre or inside forward).
Came to Luton as a wing half upon his demob
from the Navy but found his true position in
the No. 8 shirt.

Speciality—BARREL WINES from 4/6 per pint

WELL KNOWN WINES, SPIRITS, AND BEERS AVAILABLE

"ALL THE YEAR CLUB"

FROM **C. G. HART**

84 PALMERSTON ROAD, WOODSTON, PETERBOROUGH

Phone 5018

It pays to take the widest possible advice

FOR SOUND INSURANCE, consult—

ROYSTON MOSS & CO., LIMITED

INSURANCE BROKERS

12 COWGATE, PETERBOROUGH 2010

FIRE - ACCIDENT - LIFE - MARINE - MOTOR, ETC.

THIRD DIVISION

1963		F. A.
Aug. 24	Wrexham	H 5-2
" 28	Hull City	A 0-0
" 31	Q.P.R.	A 0-3
Sept. 2	Hapoel (Tel Aviv) Fr.	H 4-0
" 7	Bristol Rovers	H 2-2
" 9	Hull City	H 5-1
" 14	Oldham	A 2-4
" 18	Bournemouth	A 0-3
" 21	Notts. County	H 5-1
" 25	Millwall (Lge. Cup)	A 2-3
" 28	Southend	H 3-0
" 30	Bournemouth	H 2-1
Oct. 5	Watford	A 2-1
" 7	Millwall	H 2-3
" 11	Bristol City	A 1-3
" 14	Millwall	A 2-0
" 19	Walsall	H 1-2
" 21	Colchester	H 4-0
" 26	Reading	A 0-1
" 28	Colchester	A 1-4
Nov. 2	Luton	H
" 9	Coventry	A
" 16	F.A. Cup (1st Round)	
" 23	Brentford	A
" 30	Shrewsbury	H
Dec. 7	F.A. Cup (2nd Round)	
" 14	Wrexham	A
" 21	Q.P.R.	H
" 26	Crewe	A
" 28	Crewe	H

1964

Jan. 4	(3) Mansfield	H
" 11	Bristol Rovers	A
" 18	Oldham	H
" 25	(4) Crystal Palace	A
Feb. 1	Notts. County	A
" 8	Southend	A
" 15	(5) Watford	H
" 22	Bristol City	H
" 29	(6) Port Vale	A
Mar. 7	Reading	A
" 14	(S.F.) Luton	A
" 23	Port Vale	H
" 28	Mansfield	A
" 30	Barnsley	H
" 31	Barnsley	A
Apr. 4	Brentford	A
" 11	Shrewsbury	H
" 18	Crystal Palace	H
" 20	Coventry	A
" 25	Walsall	A
May 2	(Final)	

GOAL SCORERS

	Ftbl Lge	Ftbl Com.	Fr.	Cup & Lge Cup	Ttl
Dougan	13			1	14
Smith	8				8
Senior		7			7
Turley		2	2	3	7
Graham		7			7
McNamee	5			1	6
Horobin	6				6
Moulden	1	5			6
Pearce	2		1		3
Overfield		2			2
Own Goal	1		1		2
Jackson	1				1
	37	23	4	5	69

FOOTBALL COMBINATION

1963		F. A.
Aug. 31	Northampton	H 2-0
Sept. 7	Plymouth Argyle	A 1-4
" 14	Nottingham For.	A 1-0
" 28	Cardiff City	A 6-2
Oct. 1	Corby (Mid. F/Lit Cup)	A 3-2
" 5	West Ham	H 3-1
" 12	Leicester City	H 4-0
" 19	Arsenal	A 3-1
" 26	Shrewsbury	H
Nov. 2	Mansfield	A
" 9	Luton	H
" 16	Crystal Palace	A
" 23	Ipswich Town	H
" 30	Notts. County	A
Dec. 7	Arsenal	H
" 14	Tottenham	H
" 26	Nottingham Forest	H
" 28	Norwich City	A

1964

Jan. 4	Northampton	A
" 11	Plymouth	H
" 25	Bristol Rovers	H
Feb. 1	Colchester	A
" 8	Cardiff	H
" 15	West Ham	A
" 22	Shrewsbury	A
" 29	Mansfield	H
Mar. 7	Luton	A
" 14	Crystal Palace	A
" 21	Ipswich	H
" 27	Colchester	H
" 28	Notts. County	H
" 30	Tottenham	A
Apr. 4	Leicester	A
" 11	Bristol Rovers	A
" 25	Norwich City	H

© the Football League Ltd., and not be reproduced in whole or in part without their consent.

DIVISION III

	P	W	D	L	F	A	W	D	L	F	A	Pts
Covntry	17	6	2	1	27	9	5	1	2	17	9	25
Oldham	18	7	0	2	19	12	3	3	3	14	12	23
C. Pal.	17	7	1	0	18	4	2	3	4	12	15	22
Bnmth	17	6	1	1	15	3	3	2	4	13	13	21
Brentfd	18	6	0	4	32	17	2	5	1	15	14	21
Reading	18	6	2	1	14	7	2	3	4	7	13	21
Shrsbry	17	8	0	1	17	4	2	1	5	11	25	21
P. Vale	18	6	3	0	19	4	2	1	6	5	11	20
Brist. C.	18	5	3	2	20	11	3	1	4	10	13	20
Watfd	18	6	2	1	23	14	2	2	5	7	12	20
Walsall	18	2	6	1	14	15	4	2	3	9	8	20
P'boro	18	6	1	2	29	12	2	1	6	8	19	19
Colchtr	18	5	2	2	20	11	1	5	3	9	15	19
Mnsfld	18	5	4	0	17	8	2	1	6	8	15	19
Bris. R.	17	3	3	2	13	7	4	1	4	13	15	18
Q.P.R.	17	6	0	2	14	8	2	1	6	9	16	17
Hull C.	16	4	3	0	13	7	2	2	5	8	17	17
Southnd	18	3	5	1	15	9	2	1	6	11	22	16
Barnsly	18	3	4	2	13	10	0	3	6	13	29	13
Crewe	17	3	3	3	9	8	1	2	5	9	21	13
Luton	18	4	1	1	12	17	0	3	6	5	16	12
Millwall	18	2	0	7	5	14	2	2	5	10	19	10
Notts C	18	3	1	5	8	9	1	0	8	8	25	9
Wrxbm	17	2	0	6	20	25	1	1	7	13	33	7

100% coverage

of Peterborough United

- MATCH REPORTS
- ACTION PICTURES
- LIVELY COMMENT

Wednesday's **POSH POST**

G. NORTH

Specialists in Used Cars and Motor Vehicles



Telephone 2296

OUNDLERD., PETERBOROUGH

AT A LOOSE END?
NO SPARE TIME OCCUPATION?



4/5th Bn. The Northamptonshire Regiment

OFFERS

New Interests - Adventure - Comradeship
with Good Pay - Tax Free Bounties
to Fit and Energetic Young Men

CALL OR RING

London Road T.A.C. Tel: 4581
Lincoln Road T.A.C. Tel: 4688

SPECIAL 3 COURSE LUNCHEON served from
11.30 a.m. to 2 p.m.

Choice of English and Chinese Dishes

Parties Catered For Accommodation for 100

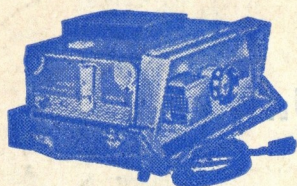
Great Wall Chinese Restaurant

MARKET PLACE - PETERBOROUGH

Telephone Peterborough 2170

Open daily 11.30 a.m. to 11.30 p.m. (incl. Sundays)

CAMPKINS for PROJECTORS



LEITZ PRADOLUX
Semi-Automatic
£29-5-0

NORIS AIRFLOW
300 watts
£23-2-0

ILFORD SPORTSVIEW
now reduced to
£14-10-0

PAXIMAT. S.
Remote Control
£37-15-0

GNOME CLASSIC
300 Blower
£15-15-0

NORIS 6 x 6
for 2½ Transparencies
£21-0-0

16 mm SOUND
FILM UNIT

Available for Children's Parties
and Film Shows for Old People's
Homes, Institutes, etc., etc.

HIRE PURCHASE — PART EXCHANGES — CAMERA REPAIRS

CAMPKIN'S CAMERA SHOP

LONG CAUSEWAY — PETERBOROUGH

(Also at Cambridge—15 King's Parade)

TELEPHONE
5643

TELEPHONE
5643

Saturday, 9th November, 1963

FOOTBALL COMBINATION — DIV. I

LUTON TOWN RES.

Kick-off 3.15 p.m.

Tel.: Peterborough 3444—3445

Established 1871

ARTHUR E. CRAIG & Co. LIMITED

AUCTIONEERS, SURVEYORS, VALUERS, LAND AND ESTATE AGENTS

**BROADWAY CHAMBERS,
PETERBOROUGH**

Established 1875

Telephone
PETERBOROUGH 3100



PLUMBERS
PAINTERS
DECORATORS

W. HAWKINS & SON LIMITED

BUILDERS AND CONTRACTORS

FLETON AVENUE — OLD FLETON — PETERBOROUGH
CONTRACTORS TO PETERBOROUGH UNITED FOOTBALL CLUB