

HAVE YOUR

## CENTRAL HEATING

INSTALLED BY

J. A. TILL & CO. LTD. :  
BRISLINGTON, BRISTOL 4

FLOWERS HILL  
Telephone 79875

Approved Installers

OIL FIRING : GAS OR SOLID FUEL

Terms arranged



# BRISTOL CITY F.C.

SEASON 1963-64



4<sup>D</sup>

Tues. 29th Oct. LUTON TOWN Div. 3, K.O. 7.30 p.m.

# Take Courage



• OFFICIAL PROGRAMME •



## F. C. HOLLY

Complete Sports Outfitters

We have fitted out Bristol City F.C.  
Bristol Rovers F.C.  
English Schoolboys  
with all their clothing  
Special Discount to Clubs

Send for 16 page List

195a MILTON RD. WESTON-S-MARE

Phone Weston 2859

Modern Marble  
Fireplaces

General  
Repairs

## V. C. HILL

95 Bridgwater Road  
Bristol 3

Telephone 663357

Roof Specialist Work Guaranteed

## H. S. P. MOTOR Co.,

Volkswagen Agents. Services & Sales

33 Redcatch Road, Knowle, Bristol 4

TELEPHONE 76592

## W. J. KEW (Contractors) LTD.

Building and Public Works  
Contractors

**BEDMINSTER DOWN  
BRISTOL 3**

PHONE 663091

HOUSES ARE BEING ERRECTED AT:  
HIGHRIDGE GREEN, LONG ASHTON  
CLEVEDON AND YATTON

## THE DOWNS BUILDERS SUPPLY CO. LTD.

Bedminster Down Road, Bristol 3  
for your

Decorating Materials  
Ironmongery, Hardware,  
Etc., Etc.

AUTHORISED HOOVER DEALERS  
Telephone 663638

A wide selection of holidays always available  
from your local Travel Agent

## RENWICK WILTON & DOBSON LTD.

122, EAST STREET, BEDMINSTER.  
Tel. 661495

Contact us now for supply of brochures!

We are official agents for all leading tour  
operators.

No booking fees charged

ENJOY GOOD CHINESE CUISINE  
AT HOME  
Try "SPECIAL TAKE AWAY PACKS"  
from

## THE WILLOW CAFE

4 UPTON ROAD, off corner  
Raleigh Road, Southville, Bristol 3  
Chow Mien, Chow Fan, Prawn or Chicken  
or Beef Curry Rice, Tender Steak, Fish  
and Chips

Prices from 2/9d. to 4/6d.  
Open: Lunch Time Tuesday to Saturday  
11.30 a.m. to 2.15 p.m.  
Evenings: Monday to Saturday, 7.30 p.m.  
to 11.30 p.m.

## BRISTOL CITY FOOTBALL CLUB LIMITED

GROUND AND REGISTERED OFFICES ASHTON GATE, BRISTOL 3

F.A. CUP: Finalists 1908/9, Semi-finalists 1919/20

WELSH CUP: Winners 1933/4

### FOOTBALL LEAGUE:

Division I.—1906/7 (runners-up), 1907/8 to 1910/11  
Division II.—1901/2 up to 1905/6; 1911/2 up to 1921/22; 1923/24;  
1927/28 up to 1931/32; 1955/6 up to 1959/60  
Division III.—Champions 1922/23; 1926/27; 1954/55

### DIRECTORS

Mr. H. J. DOLMAN (Chairman)  
Mr. W. G. GARLAND (Vice-Chairman) Mr. A. J. AMOR Mr. N. B. JONES  
Mr. S. F. KEW Mr. R. T. POETON Mr. L. SMART Mr. G. WHITTOCK  
Mr. G. W. YOUNG

Manager: Mr. F. FORD

Secretary: Mr. B. C. BUSH

Trainer: LES BARDSLEY

Hon. Medical Officers: Dr. W. BAIN, Dr. T. MILLING

### Our Visitors

## LUTON TOWN

LUTON TOWN, managed by former Bristol City coach Bill Harvey, pay their first visit to Ashton Gate since the 1936-37 season, when both clubs were in the Third Division.

Luton were the first club in the South of England to employ professional players, and they started in the Southern League in 1894.

They were elected to the Second Division three years later, but failed to gain re-election in 1900. After another spell in the Southern League they joined the Third Division in 1920, the Third South the following season, and they won the championship in 1937 after being runners-up the previous season.

In 1955 Luton were second in the Second Division, and gained promotion to the First Division.

Luton reached the final of the F.A. Cup in season 1958-59, losing

by two goals to one to Nottingham Forest.

Three members of their Cup Final side are still with the club. They are goalkeeper Ron Baynham, Bob Morton and David Pacey.

Morton, now a full-back, played at centre-forward at Wembley, and Pacey at left-half.

Luton Town's fall from grace started in 1960. Until then they had the proud record of never having been relegated. They went down with Leeds United at the same time as Bristol City were relegated from the Second Division to the Third.

At the end of last season Luton took the plunge into the Third Division with Walsall.



# POETON

**METAL FINISHERS**

**WHITEHOUSE STREET BRISTOL 3**

Telephone : 23421

Enjoy your football . . Enjoy Central Heating in  
your home by . . .

**A. S. WYATT**

*Heating Engineers*

**62 FOOTSHILL ROAD HANHAM BRISTOL**

Telephone : 67-1836

**S. DELANEY**

Commercial Motor Body Builder



Hartcliffe Way, B'tol 3 Tel. 661545

Member of the Vehicle Builders and  
Repairers Association

**ASHTON VALE  
COACHWORKS**

(A. W. Waterman)

Ashton Vale Road, Ashton, B'tol 3

**COACH BUILDERS AND  
PANEL BEATERS**

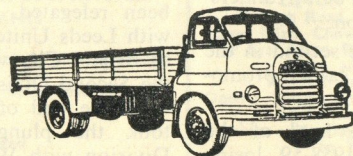
TEL : BRISTOL 665370

**TAYLOR BROS.**

**COACH BUILDERS AND MOTOR ENGINEERS**

Proprietors :  
A. E. and  
R. J. TAYLOR

Telephone  
673901



171  
**BRYANTS HILL  
ST. GEORGE  
BRISTOL**

**PANEL BEATING — SHEET METAL — RECELLULOSING**



ALEX TAIT breasts the ball down in Saturday's match with HULL CITY

## England v Wales — Under 23's

Stand tickets for the Under-23 international match between England and Wales at Ashton Gate on Wednesday, November 13 (kick-off 7.30 p.m.) are now on sale.

The prices are—10s. for the New Stand and 8s. for the Old Stand.

Season ticket-holders will be entitled to claim one extra ticket for each season ticket held.

Certain season ticket-holders in Block C 1—15, D to J, will be allocated other accommodation as their

seats have been earmarked by the Football Association for officials of both associations and their guests.

Early application for tickets is advised, for after October 29 they will be dealt with in strict rotation, and as soon as possible.

Postal applications should contain remittance and stamped addressed envelope.

Other prices are : Enclosures 5s., covered end 4s., uncovered end 3s., juveniles half-price.



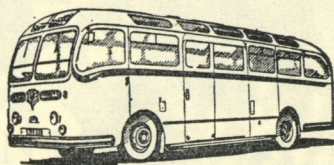
Travel by

**EMPRESS COACHES**

4 Colston Street, Bristol 1

Telephone 20650-25443

SPECIAL QUOTATIONS FOR PRIVATE PARTIES



## 'The Curtain Call' Restaurant

(Proprietor: A. GRIVAS)

10 DENMARK STREET, BRISTOL 1

Tel. 21758

1 OF THE BEST RESTAURANTS

2 GIVE YOU THE

X CELLENT CUISINE & SERVICE YOU REQUIRE

-O-

Bed and Breakfast

Hot and Cold in every room

Private Parties

Wedding Receptions

Banquets

THREE COURSE BUSINESS LUNCHEON 11.0 a.m. — 2.30 p.m.

A La Carte Menu served at all times

Open Daily till Midnight—including Sundays

## C. MARKS

Repair Specialist

ALL MAKES SERVICED OR  
COMPLETELY  
OVERHAULED

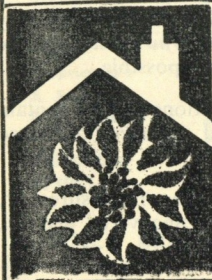
MOTOR CYCLE SERVICES

SWINGING  
ARM CONVERSIONS

Albany Buildings

Dean Lane, Bedminster

opp. Bristol South Baths TELEPHONE 664833



**A. BILLINGS & CO. LTD.**

2 VICTOR ROAD, BEDMINSTER, BRISTOL 3

Telephone 66-5222

★

Approved installers Central Heating  
Installations

★

Terms available under Housewarming Plan

## LUTON TOWN — pen pictures

**Ron Baynham**, goalkeeper, has been with Luton Town since 1951, when he was signed from Worcester City. An England international, he has played for the Football League and for England B. He toured South America with the F.A. team in 1959.

**Bob Morton**, full-back, a local born player, has been at Luton since 1948. He has played for England B, the F.A. and was reserve for England at Wembley in 1955 and 1958.

**John Bramwell**, full-back, was signed from Everton in October, 1960. He has also played at wing-half.

**Alan Daniel**, full-back, is the son of **Mel Daniel**, a former Luton player. He was signed in 1958, and

made his debut last season.

**Alan McBain**, full-back, was born in Aberdeen, and was signed last season from Carlisle United.

**David Pacey**, wing-half, was born in Luton, and was signed in 1956. He has played for the England Under-23 side, and for the F.A. against the Army.

**Gordon Fincham**, centre-half, joined Luton in 1963 from Plymouth Argyle. He had four seasons with the Argyle, and was previously with Leicester City.

**Alan Clarke**, wing-half, is a local born player. He started as an amateur in 1958 and became a part-time professional in October 1961.

**Alwyn McGuffie**, wing-half, has also played at inside-forward. He became a professional with Luton in 1954.

**Harry Walden**, outside - right, joined Luton from Kettering in January, 1961, and has fought his way back into the first team after a severe injury last season.

**Ray Smith**, inside-forward, is a new signing from Northampton Town. He made his home debut against the City on Tuesday last, and has also played for Peterborough.

**Tom McKechnie**, centre-forward, was born in Glasgow and was signed from the Scottish club Rob Roy in 1961.

**Gareth Salisbury**, inside-forward, played for Norwich City last season.

**Gordon Turner**, centre-forward, Luton's leading scorer for eight seasons. He has also played for the Football League and the F.A. against the Army.

**Jim Weir**, outside-left, joined Luton in August from Mansfield Town.

## Football League's JUBILEE BOOK

Histories are sometimes dull. No one will say this of THE FOOTBALL LEAGUE'S JUBILEE BOOK just issued to mark the pioneer competition's 75th birthday. It is a thriller with about 50 illustrations—some in colour—to light up great teams, games, and players.

The highlights and humours of the early days are summarised; the growth to 92 clubs is covered in a fascinating calvacade of the League's star performers.

A chapter on the League's outstanding teams explains why these sides are placed on a pedestal. A chapter on pioneers cites the players who made new moves—men like Alex James (Arsenal), W. R. ("Dixie") Dean (Everton), Don Revie (Manchester City) and also Billy McCracken (Newcastle United) whose off-side tactics revolutionised the game.

This Jubilee Book has been compiled by Ivan Sharpe (with half-a-century of experience on and off the field as background) with the collaboration of Alan Hardaker, the Football League secretary, and the Headquarters Staff who are responsible for the concluding statistical section containing every League match result since the last war.

This colourful panorama tells young and old all they ought to know about the League that showed the way for the rest of the world.

Price 25s. Publishers: Stanley Paul & Co. On sale: November 11.



**WEBBINGTON HOTEL**  
Country Club, Loxton, Nr. Axbridge  
**FORMER MILLIONAIRE'S HOME**  
**NOW THE NIGHTSPOT OF THE WEST**  
Just off A38 at Cross approx. 6 miles from  
Weston-super-Mare

Accommodation all the year round  
Overnight. Residential & Self-Catering Flats  
**DINNER, DANCING & STAR CABARET**  
**EVERY NIGHT**

For table reservations and details of  
membership please telephone the Secretary  
**EDINGWORTH 369**

Why not meet your friends at  
**THE OMELETTE AND**  
**COFFEE BAR**  
**Also Steak Bar**  
**67 PARK STREET, BRISTOL 1**

Open daily 10 a.m. - midnight  
Sunday 3 p.m. - midnight

TELEPHONE 24872



Make your goal...

**T. RUSSELL**

Motor Cycle Specialists

**35 Ashton Road Bristol 3**  
TELEPHONE 665603

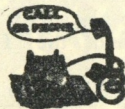
2 Minutes from the City Ground

**SMALL'S**  
**FURNISHINGS**

at Bristol's Contemporary  
Furnishing Store

This is a private enterprise  
store with a personal  
interest in all its customers  
Cash Credit or whichever  
you wish

**SMALL'S CORNER**  
215 NORTH STREET  
BRISTOL 3 Tel. 66-3130



DRIVE TO



**HOME PLANNING**  
**SHOWROOMS**

**BRISTOL'S CENTRE FOR**

**KITCHENS**

**BATHROOMS**

**HOME HEAT**

**THE IRON & MARBLE CO. LTD.**

16A St. Thomas Street, Bristol 1

Telephone 292436/7

**BRISTOL CITY**

Colours: Red and White

Left

**GIBSON**

**BRIGGS—2**

**THRESHER—3**

**PARR—4**

**CONNOR—5**

**LOW—6**

**DERRICK—7 CLARK—8 ATYEC—9 WILLIAMS—10 HOOPER—11**

Referee:

**D. H. HOWELL**  
(Birmingham)



Linesmen:

Red flag:

**W. W. Drummond**  
(Chippenham)  
Yellow flag:

**P. R. Walters**  
(Chard)

**TURNER—9**

**WEIR—11 McKECHNIE—10**

**SALISBURY—8 WALDEN—7**

**McGUFFIE—6 FINCHAM—5 PACEY—4**

**BRAMWELL—3 MORTON—2**

**BAYNHAM**

Left

Colours: White Shirts, Black Knicks

Right

**LUTON TOWN**

*A change is as good as a REST*  
*new decoration is as good as a HOLIDAY*

With all decoration, careful planning is essential. Before you start moving out the furniture and taking down the lampshades there are some important things to be considered: the effect desired—the colours—the most suitable material (bearing in mind cost)—wallpaper or paint or both—how the furniture will fit in—whether the curtains will spoil the scheme—how much money it will all cost—and other things besides. If you are in doubt about any of these, please do consult us. It is our job to know the answers and we are always at your service.

**PETER TEBBIT & SONS LTD**

**BUILDING & DECORATIVE SPECIALISTS**

Head Office: West Street, Bristol 3

Telephone 66-1175 & 66-4542

**TERRITORIAL**  
**ARMY**

**883 (Gloucestershire Volunteer**  
**Artillery) Battery RA (TA)**  
*has room for volunteers to learn*

**RADIO**  
**SURVEY**  
**RADAR**  
**DRIVING**

*in their spare time*

Come and see us any  
**FRIDAY EVENING at the**  
**ARTILLERY GROUND**  
**WHITELADIES ROAD, BRISTOL 8**  
(Telephone No. 33533)

**JOIN THE GUNNERS**

**TRAVEL BY**

**WESSEX COACHES**

**AND BE THERE FOR THE KICK-OFF**  
**TELEPHONE ENQUIRIES 34001**

**PANKHURST**

(WEYMOUTH) LTD.

Motor Cycle Specialists

**100-102 LAWRENCE HILL**  
**BRISTOL 5**

Tel. Bristol 51511 'Grams Pankhurst, Bristol  
**CASH BUYERS OF ALL MOTOR**  
**VEHICLES**

Any motorised vehicle taken in  
part exchange

**AGENTS FOR TRIUMPH, B.S.A., A.J.S.**  
**D.M.W., SUN**  
**SCOOTER AGENTS FOR MOPED**  
**LAMBRETTA, DOUGLAS, VESPA**  
**MAIN AGENTS FOR B.M.W.**  
**ISETTA (Light Car)**

Open 9.0 a.m. to 7.30 p.m. every day  
except Sunday. No closing for lunch  
**Largest Stockists of Motor Cycles and**  
**Accessories in the South-West**



LARGE OR SMALL ORDERS SUPPLIED

Tel. WHITCHURCH 2 4 6 5

## F. A. SMITH Horticultural Supplier

HORTICULTURAL WORKS, GREEN ORE, NEAR WELLS  
SOMERSET Telephone Chewton Mendip 378/379

Specialist in MENDIP HILL GRASS TURF FOR LAWNS - SOMERSET ROTTED TURF  
MOULD - TOP SPIT SOIL - STERILIZED LOAM AND COMPOSTS TO JOHN INNES  
FORMULA

*Before and after the match—  
why not visit*

### JIM'S CAFE

193 Coronation Road, Bristol 3

★  
FOR HOT MEALS AND SNACKS AT  
ANY TIME . . .

OPEN MON.-SUN. 6.30 a.m. to 9 p.m.  
Bed and Breakfast at Reasonable Prices

★  
Telephone Bristol 663419



Daily  
Deliveries

TEL. 25654

Greengrocer  
Fruiterer  
Florist

### W. P. McCARTHY

11 WARING HOUSE  
REDCLIFFE HILL, BRISTOL 1

### Kingsway Motors

Proprietor: W. F. Preece

CARS BOUGHT AND SOLD . TERMS .

EXCHANGES . INSURANCES

**50 USED CARS**

always in Stock

Telephone 67-1436

81-87 TWO MILE HILL

St. George, Bristol 5

### ELECTRICITY

— see —

### R. E. SUTTON

WEST TOWN, Nr. BRISTOL

Tel. Flax Bourton 2314

Also

363 Locking Road, Weston-s-Mare

INSTALLATIONS AND REPAIRS TO ALL  
ELECTRICAL APPLIANCES  
ALL TYPES OF MOTORS REWOUND



### PINNOCK'S

Waring House

Redcliffe Hill

Bristol 1

★

YOUR . . .

Newsagents . Tobacconists

Stationers . Confectioners

### YATTON MOTORS

MOTOR ENGINEERS

HIGH STREET

YATTON, Near BRISTOL

Telephone : Yatton 2152

## BRISTOL CITY F.C. SUPPORTERS' CLUB

ASHTON GATE BRISTOL 3 TELEPHONE 665554



Chairman : Mr. J. BEALING

Vice-Chairman : Mr. A. H. RICHARDS

Secretary : Mr. A. C. FOWLER

Assistant Secretary : Mrs. B. FUDGE

Treasurer : Mr. L. CUTMORE

THE Committee have thoroughly investigated the possibility of introducing reduced fares for members who travel on the club's trips to the team's away matches. In view of the difficulties of introducing this scheme it has been decided not to reduce fares. A concession will be given at the end of the season to regular travellers throughout the season.

TRIPS arranged for November  
are :

**November 2nd—Barnsley.** Fare  
24/6d. Dep. City Ground 6.45 a.m.,  
Anchor Road 7.0 a.m., Old Market  
7.15 a.m.

**November 16th—F.A. Cup, 1st  
Round—Corby.** Dep. City Ground  
8.0 a.m., Anchor Road 8.15 a.m.,  
Old Market 8.30 a.m.

**November 30th—Southend.** Fare  
23/-. Dep. City Ground 6.45 a.m.,  
Anchor Road 7.0 a.m., Old Market  
7.15 a.m. Bookings can be made  
during the week preceding each trip  
on match days in the booking office  
situated near ringside entrance, or  
evenings (except Wednesdays) in the

Clubroom after 8 p.m. Telephone  
665554.

### Social Activities

Members are reminded that a full  
programme of social events take  
place in the Clubroom every week-  
end.

Fridays—8.30 p.m. Bingo.

Saturdays—7.45 p.m. to 8.30 p.m.

Bingo, followed by musical  
evening, including a guest  
artist spot.

Sunday—8.0 p.m. Entertainment  
to suit all ages.

Over 19,000 contributed to our  
lotteries for week commencing  
Monday, 21st. Total prize money  
£416 4s.

### ABC BEDMINSTER

Sunday, 27th October, 7 days

JASON AND THE ARGONAUTS

(U) Todd Armstrong  
Nancy Kovack

SIEGE OF THE SAXONS

(U) Ronald Lewis  
Janette Scott Ronald Howard

### BRISTOL ODEON

Retained for a further period

THE NEW JAMES BOND FILM


FROM RUSSIA  
WITH LOVE

Sean Connery



Telephone 30461

**BLOW WAVING**

 *West End*

**HAIRDRESSING**

**for MEN**

**STYLING**

**49a Whiteladies Road, Bristol, 8**

Opposite ALEXANDRA 100 yards above B.B.C.

**FORTHCOMING MATCHES**

**Saturday, November 2**  
Kick-off 3.0 p.m.

**DORCHESTER TOWN**

Western League

**Saturday, November 9**

Kick-off 3.0 p.m.

**MILLWALL**

Football League—Division III

**Wednesday, November 13**

Kick-off 7.30 p.m.

**ENGLAND v WALES**

Under 23 International

**Saturday, November 16**

Kick-off 3.0 p.m.

**BATH CITY RESERVES**

Western League

**THIRD DIVISION TABLE**

	P.	W.	D.	L.	F.	A.	Ps
Coventry C .	17	11	3	3	44	18	25
Oldham A. .	17	10	3	4	33	32	23
Crystal Pal. .	17	9	4	4	30	19	22
Bournemouth .	17	9	3	5	28	16	21
Shrewsbury T .	17	10	1	6	28	29	21
Reading . . .	17	8	4	5	21	20	20
Port Vale . . .	17	8	3	6	24	15	19
Brentford . . .	17	7	5	5	43	31	19
Mansfield T. .	17	7	5	5	25	19	19
Peterboro' U .	17	8	2	7	36	27	18
<b>Bristol City .</b>	<b>17</b>	<b>7</b>	<b>4</b>	<b>6</b>	<b>25</b>	<b>23</b>	<b>18</b>
Watford . . .	17	7	4	6	27	25	18
Walsall . . . .	17	5	8	4	21	22	18
Colchester U .	17	5	7	5	25	25	17
Q.P.R. . . . .	17	8	1	8	23	24	17
Hull City . . .	16	6	5	5	21	24	17
Bristol Rovers .	16	6	4	6	25	20	16
Southend U. .	17	5	6	6	25	28	16
Barnsley . . .	17	3	7	7	25	37	13
Crewe Alex. .	17	4	5	8	18	29	13
<b>Luton Town</b>	<b>17</b>	<b>4</b>	<b>4</b>	<b>9</b>	<b>16</b>	<b>28</b>	<b>12</b>
Notts County .	17	4	1	12	15	32	9
Millwall . . .	17	3	2	12	13	32	8
Wrexham . . .	17	3	1	13	33	58	7

CHINESE and ENGLISH DISHES  
**FOUR SEAS CHINESE RESTAURANT**

106 BROADMEAD, BRISTOL 1

Telephones : 24749 - 24674

PARTIES CATERED FOR

OPEN 11.30 a.m. TO 11.30 p.m. SUNDAYS INCLUDED

**FIRST TEAM RECORDS**

**APPEARANCES**

Atyeo . . . . .	18	Hooper . . . . .	11
Briggs . . . . .	18	Kurila . . . . .	6
Clark . . . . .	18	Low . . . . .	6
Cook . . . . .	4	Lythgoe . . . . .	7
Connor . . . . .	18	Parr . . . . .	9
Derrick . . . . .	13	Tait . . . . .	10
Etheridge . . . . .	9	Thresher . . . . .	13
Ford . . . . .	5	Waterhouse . . . . .	6
Gibson . . . . .	13	Williams . . . . .	13

**GOALSCORERS**

Atyeo . . . . .	11	Clark . . . . .	3
Derrick . . . . .	4	Lythgoe . . . . .	1
Williams . . . . .	4	Own goal . . . . .	1
Hooper . . . . .	3		

**WESTERN LEAGUE**

	P.	W.	D.	L.	F.	A.	Ps
Torquay Utd. . . . .	15	9	2	4	39	19	20
<b>BRISTOL CITY . . . . .</b>	<b>10</b>	<b>8</b>	<b>2</b>	<b>0</b>	<b>34</b>	<b>9</b>	<b>18</b>
Welton Rovers . . . . .	13	8	1	4	27	16	17
Bridgwater Town . . . . .	9	8	0	1	19	8	16
Yeovil Town . . . . .	13	5	5	3	24	20	15
Bideford . . . . .	10	6	2	2	23	10	14
Barnstaple T. . . . .	11	6	2	3	29	22	14
Salisbury . . . . .	11	6	1	4	17	17	13
Weymouth . . . . .	14	3	7	4	25	24	13
Bath City . . . . .	12	4	4	4	26	25	12
Chippenham Tn. . . . .	12	5	1	6	22	18	11
Exeter City . . . . .	14	3	5	6	31	30	11
Andover . . . . .	11	4	3	4	24	24	11
Minehead . . . . .	9	5	0	4	19	19	10
Poole Town . . . . .	14	4	2	9	23	31	10
Weston-s-Mare . . . . .	11	3	3	5	16	20	9
Dorchester Town . . . . .	8	1	6	1	14	14	8
Portland Utd. . . . .	12	3	2	7	21	36	8
Glastonbury . . . . .	11	3	1	7	26	33	7
Frome Town . . . . .	11	3	1	7	22	35	7
Bridport . . . . .	11	1	4	6	13	30	6
Taunton . . . . .	12	1	2	9	6	41	4

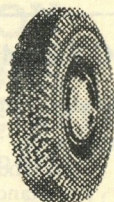
**£1 DOWN** secures a New Tyre/2 Remoulds  
from Bristol's Best seven-day tyre service

**METEOR TYRE CO. LTD.**

Clothier Rd. Brislington Trading Est. Tel. 79494

Also at 16 Bath Road, Keynsham. Tel. Keyn. 2622

● THE ONLY TYRE AND REMOULD WITH 100 PER CENT. GUARANTEE



FOR **VICTOR** NEW AND USED  
QUALITY **MOTOR** MOTOR-CYCLES  
AND VALUE **CYCLES** MOPEDS AND  
FOR YOUR MONEY **SCOOTERS**  
WE SPECIALISE IN BUILDING COMBINATIONS TO YOUR  
REQUIREMENTS  
**74 WEST ST., BEDMINSTER, BRISTOL 3 Tel. 665678**



# FIXTURES 1963-64

## Football League—Division III

## Western League

1963		F	A	
August				
24—BRISTOL ROVERS .....	H	3	0	20,697
27—Brentford .....	A	2	1	16,800
31—Port Vale .....	A	1	4	10,353

September				
4—F.L. Cup 1st R. Gillingham	A	2	4	5,940
7—NOTTS COUNTY .....	H	2	0	9,440
10—BRENTFORD .....	H	3	3	12,689
14—Crewe Alexandra .....	A	0	2	5,841
18—Shrewsbury Town .....	A	0	2	7,152
21—CRYSTAL PALACE .....	H	1	1	9,782
28—Walsall .....	A	1	1	6,312

October				
1—SHREWSBURY TOWN ..	H	2	2	9,247
5—READING .....	H	0	2	7,585
8—Coventry City .....	A	1	2	23,884
11—PETERBORO' UTD. ....	H	3	1	10,770
15—COVENTRY CITY .....	H	0	1	13,502
19—Bournemouth & Bos. ....	A	1	0	11,454
23—Luton Town .....	A	4	1	5,207
26—HULL CITY .....	H	1	0	10,568
29—LUTON TOWN .....	H			

November				
2—Barnsley .....	A			
9—MILLWALL .....	H			
16—Corby Town (F.A. Cup 1st round)	A			
23—WATFORD .....	H			
30—Southend United .....	A			

December				
7—(2) .....				
14—Bristol Rovers .....	A			
21—PORT VALE .....	H			
26—QUEENS PARK RANGS. ....	H			
28—Queens Park Rangers .....	A			

1964				
January				
4—(3) Colchester United .....	A			
11—Notts County .....	A			
18—CREWE ALEXANDRA ..	H			
25—(4) WREXHAM .....	H			

February				
1—Crystal Palace .....	A			
8—WALSALL .....	A			
15—(5) Reading .....	A			
22—Peterborough United .....	A			
29—(6) OLDHAM ATH. ....	H			

March				
7—Hull City .....	A			
14—(SF) BARNSLEY .....	H			
21—Oldham Athletic .....	A			
27—MANSFIELD TOWN .....	H			
28—COLCHESTER UTD. ....	H			
30—Mansfield Town .....	A			

April				
4—Watford .....	A			
11—SOUTHEND UNITED ..	H			
18—Wrexham .....	A			
20—Millwall .....	A			
25—BOURNEMOUTH & BS. ....	H			

May				
2—(FA Cup Final)				

1963—August				
24—Dorchester Town .....	A	1	1	
27—WESTON-s-MARE .....	H	3	0	
31—PLYMOUTH ARG. RES. (F.)	H	0	2	

September				
4—Bideford (Alan Young Cup)	A	0	2	
7—Poole Town .....	A	4	1	
11—Bridgwater Town (Som. Prof. Cup)	A	4	1	
14—MINEHEAD .....	H	5	2	
17—CHIPPENHAM TOWN ..	H	3	1	
21—Torquay Utd. Res. ....	A	3	1	
24—BIDEFORD (Alan Young Cup)	H	4	0	
28—FROME TOWN .....	H	8	0	

October				
5—Yeovil Town .....	A	1	1	
8—WELTON ROVERS .....	H	3	1	
12—CARDIFF C. RES (F) ..	H	5	1	
19—TORQUAY UTD. RES. ....	H	3	1	
26—Bath City (Somerset Prof. Cup)	A	2	0	

November				
2—DORCHESTER TN. ....	H			
9—Taunton Town .....	A			
16—BATH CITY .....	H			
23—Minehead .....	A			
30—EXETER CITY RES. ....	H			

December				
7—Chippenham Town .....	A			
14—YEOVIL TOWN .....	H			
21—Bridgwater Town .....	A			
26—Exeter City Res. ....	A			
28—GLASTONBURY .....	H			

1964—January				
4—PORTLAND UTD. ....	H			
11—TAUNTON TOWN .....	H			
18—Bideford .....	A			
25—Andover .....	A			

February				
1—BARNSTAPLE TN. ....	H			
8—Welton Rovers .....	A			
15—B'TOL ROVS. RES. (F) ..	H			
22—BIDEFORD .....	H			
29—Weston-super-Mare .....	A			

March				
7—PORTSM'TH RES. (F) ....	H			
14—Bridport .....	A			
21—BRIDPORT .....	H			
27—Salisbury .....	A			
28—Portland United .....	A			
30—SALISBURY .....	H			

April				
4—ANDOVER .....	H			
8—Barnstaple Town .....	A			
11—Glastonbury .....	A			
14—Weymouth .....	A			
18—WEYMOUTH .....	H			
21—POOLE TOWN .....	H			
25—Frome Town .....	A			

© These Fixtures are the copyright of The Football League Limited, and are printed by their permission under Licence No. 2. They must not be reproduced in whole or in part without permission of The Football League Limited.

## AFTER THE MATCH

VISIT

THE

# MAURETANIA

(Under New Management)

LARGEST FREE HOUSE IN THE SOUTH-WEST OF ENGLAND

**Spacious Comfortable Bars**

ALL THE BEST BEERS AND STOUTS AVAILABLE

also

AVERY'S FINE WINES AND SPIRITS

First Class Grill Room and Buffet available

Address:

7, Park Street (five minutes from the Tramway Centre) Telephone 25141.

# RUMSEY



DISTRIBUTORS

55/61 Victoria Street  
Bristol 1

Also at  
414/424 GLOUCESTER ROAD  
BRISTOL 7

and HIGH STREET, KINGSWOOD

Telephone : Bristol 294441 (10 lines)



1 good way  
2 meet your  
Xact motor-cycle needs

## **TAYLOR & WILLIAMS**

300 North Street — Bedminster  
Telephone 662130  
SPECIALISTS IN LOW-PRICED  
MOTOR-CYCLES  
for the working man

## **RAINBOW CHINESE Restaurant**

213 CHELTENHAM ROAD  
BRISTOL 6

**FINEST**

CHINESE AND ENGLISH CUISINE

Special Luncheon served at 3/3d.

Open daily 11.30 a.m. - 11.0 p.m.  
(including Sunday)

SATURDAY CLOSE AT 11.30 P.M.

## **THE PERFECT CENTRE**

for

TYPING, DUPLICATING AND  
CIRCULARISING



## **OFFICE ASSISTANCE BUREAU**

Secretarial Service

25 Orchard Street, Bristol 1  
(2 MINUTES CENTRE)

Telephone . . . 293101 (2 Lines)

YOU'LL SCORE with

## **RAY JENKINS**

GENERAL



BUILDER  
DECORATOR  
CARPENTER

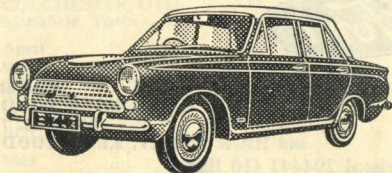
66 Ridgeway Road, Fishponds  
BRISTOL 65-3205

**FOR THE  
BEST  
REPORTS!**

**GREEN'UN  
EVENING POST  
WESTERN  
DAILY PRESS**

**HOME or AWAY**

you're bound to score—with a **NEW FORD** from



**TIMSBURY 391 and 392**

**L. R. BENCE**

& CO. LTD.

**Westways Garage**

**MARKSBURY**

**Nr. Bath**