

1963/64



Crystal Palace
F.C.

TRAVEL TO
CRYSTAL PALACE AWAY MATCHES

BY

Bourne & Balmer

*The only Company licensed to run coaches
to Crystal Palace away matches*

Details Given Over The Loud Speaker

97 GEORGE STREET · CROYDON

Phone : CROydon 3461

BE IN SAFE HANDS



with
THE ANCIENT ORDER OF

**FORESTERS
FRIENDLY SOCIETY**

for
**SICK
BENEFITS
·
LIFE
ASSURANCE
PENSIONS
·
&
ENDOWMENTS**

Full details
from the local
secretary...
2, Cranbrook Rd.
Thornton Heath.
phone LIV.1619

THE CRYSTAL PALACE FOOTBALL CLUB LIMITED

DIRECTORS

A. J. WAIT (Chairman) J. R. H. DUNSTER, J.P. (Vice-Chairman)
V. A. ERCOLANI R. SHRAGER
Manager: D. R. GRAHAM Secretary: Miss M. E. MONTAGUE
Medical Officers:
Dr. J. P. Reid, M.B., Ch.B., (Glas). Dr. P. H. Swinhoe, M.A., M.B., B.Chir.,
D.(Obst.) R.O.G.
Trainer: T. BROLLY

PROGRAMME Price SIXPENCE

No. 5

WEDNESDAY, 2nd OCTOBER, 1963

CRYSTAL PALACE

v.

LUTON TOWN

KICK-OFF 7.30 P.M.

FUTURE HOME FIXTURES

Saturday, 5th October

FOOTBALL COMBINATION

CRYSTAL PALACE

v.

**NOTTS COUNTY
RESERVES**

KICK-OFF 3.00 P.M.

Monday, 7th October

LONDON CHALLENGE CUP
1st Round

CRYSTAL PALACE

v.

HOUNSLOW T.

KICK-OFF 7.30 P.M.

MOST PEOPLE read

THE CROYDON ADVERTISER



STANLEY MATHEWS, C.B.E.

The senior professional in English football; was born in Hanley Stoke, played his school-day football in Stoke, joined Stoke on leaving school and is now a Freeman of that City. Played his first League game at seventeen, versus Bury in 1937, and has now played over 680 League games (70 goals), 82 F.A. Cup-ties (8 goals) and has one Cup Final medal won with Blackpool in 1952-53.

Played for England in 52 matches (11 goals), The Football League, 13 matches (2 goals) and twice played in Great Britain XI's. Transferred from Stoke to Blackpool in 1946-7, returned in 1961 to spark the tremendous revival in the fortunes of Stoke City.

Won the first "Footballer of the Year" title 1948 and 1962. The C.B.E. conferred in 1957. A natural player, blessed with tremendous ability, which, to his very great credit, he has always used with the fullest zest and enthusiasm. One of the games, all time, 'truly greats'.

CLUB NOTES

Our second visit to Bristol, this time against the Rovers in the Football League Cup, was not quite so rewarding as the Saturday League game versus the City.

Changes in the team were necessary, due to a number of injuries that resulted from the Saturday game. For one of the players who came into the side, Billy Birch, it was his first show for the League XI. He had quite a good game as did all the youngsters who came into the team, and had the luck of the game gone with us, we might well have had a replay. A replay would have given us our first League Cup Tie at home, for in previous seasons we have had to visit Darlington (1960-61), Q.P.R. (1961-62) and Leeds United (1962-63) so a home tie would not have been out of turn.

As far as Cup Ties are concerned, "This Was The Week That Was!" for in addition to the full programme of League Cup ties we also had the European Cup ties both 1st and 2nd leg games, The first round of the European Cup Winners Cup and also the first round of the Inter Cities Fairs Cup. At National level we also had a match in the European Nations Cup, between Austria and Eire which resulted in a goal less draw. The general analysis of all these Cup Ties would seem to indicate that our own English League teams are—up to standard. Our only defeat was Everton's and this single goal defeat by Inter Milan is surely no catastrophe, for Milans team is indeed true to name of the Internazionale, in every respect . . . The other matches give us, a draw for Manchester United in the Cup Winners Cup and in the Inter Cities Fairs Cup we gained two sound and convincing victories. For the Arsenal 7-1 and for Sheffield Wednesday 4-1. So perhaps our football is not quite so bad as some folk would have us believe, for all these games were played abroad.

Our opponents here this evening are Luton Town and it's quite a time since we had a game here at Selhurst Park, with them. Let's hope the game is a good one that will provide the entertainment you wish to see. Welcome Luton Town!

MOST PEOPLE read

THE CROYDON ADVERTISER

Our Visitors—LUTON TOWN

RON BAYNHAM (G). Has been with Luton Town since 1951. Was secured from Worcester City. He has represented England on several occasions. Played for the Football League on two occasions and also for England 'B' Team versus Yugoslavia 'B'.

JOHN BRAMWELL (FB). Joined Luton in October 1960 from Everton and has proved a very capable player worthy to be considered for International honours. Played at wing-half on several occasions last season, proving equally successful.

MICHAEL FAIRCHILD (OR). Came to Luton from Lowestoft in November 1960. Can be brilliant at times which makes us have great hopes for the future.

GORDON FINCHAM (CH). Transferred from Leicester to Plymouth four years ago and then to Luton in July 1963. Is the dominating centre-half we hope will strengthen our defence.

MARK LOWNDS (WH). Signed from Durham in January 1960. Became full-timer on completion of his apprenticeship with a local firm. Is a wing-half who likes to get on with the game.

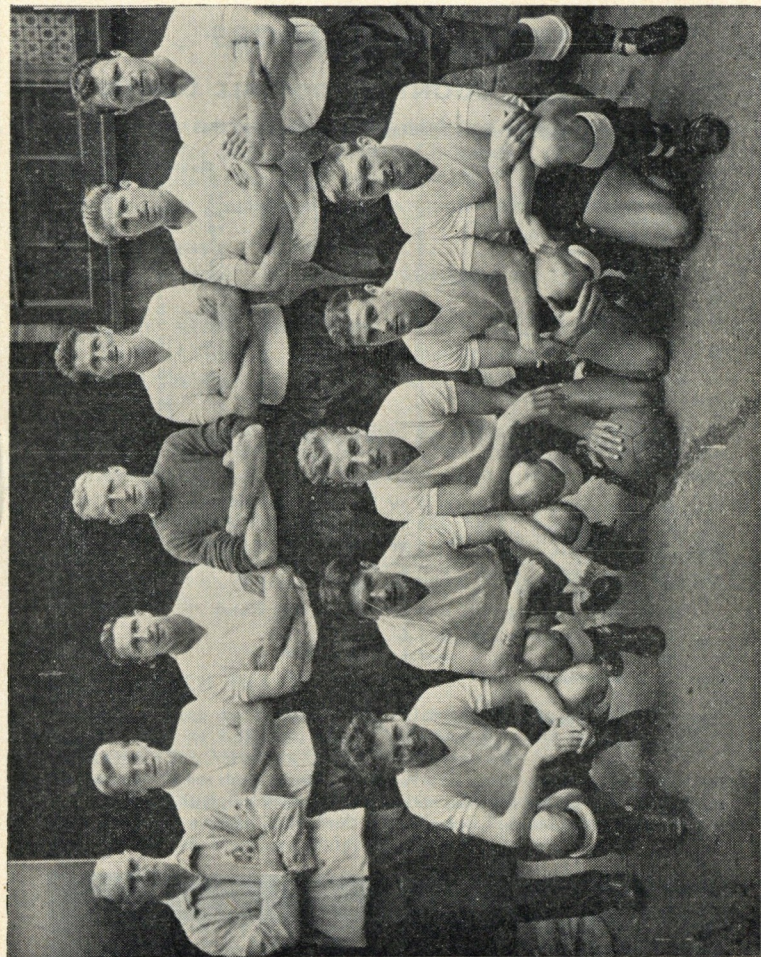
THOMAS McKECHNIE (IF). Born Glasgow and came here direct from Rob Roy (Scotland) at the end of season 1960-61. Played consistently in the First Team the past two seasons, except when injury prevented him from playing.

BOB MORTON (WH). Local born and has been with the Club since 1948. Played for England 'B' once and The Football Combination versus the Dutch XL on two occasions. Also for the F.A. versus The Army. Was chosen as Reserve for England at Wembley in 1955 and again when they played Ireland in 1958. Has played in most positions for Luton.

DAVID PACEY (WH). Born in Luton, signed for the Club in 1956. Has played for the F.A. versus the R.A.F. and was also a member of the England under 23 team against Germany and Italy. Very strong player with a liking for getting among the goalscorers.

GORDON RIDDICK (IF). Turned Professional in April 1961 following a short period of Apprenticeship. Tall, with good ball control and a very good shot, much is expected of this lad as he gains more experience. Has already made several First Team games.

GORDON TURNER C or IF). Came to Luton as a wing-half upon his demob. from the Navy but found his true position in the No. 8 shirt. Represented the English League against the Scottish League in 1955 and also played for the F.A. XI versus the Army in 1958.



Back Row (L to R): Frank King (trainer), Alan Daniel, Bob Morton, Ron Baynham, Gordon Fincham, Dave Pacey, John Bramwell. Front Row (L to R): Harry Walden, Gordon Turner, Ron Davies (now with Norwich), Gareth Salisbury, Freddie Jardine.

WITH THE JUNIORS

SOUTH EAST COUNTIES FOOTBALL LEAGUE

League Table Including 23th September, 1963

	P	W	D	L	Goals		Pts.
					F	A	
Queens Park Rangers ...	5	4	1	—	23	3	9
Chelsea ...	5	4	1	—	24	4	9
Crystal Palace ...	6	4	1	—	19	14	9
Leyton Orient ...	5	3	1	1	17	6	7
Fulham ...	5	3	1	1	16	7	7
Charlton ...	5	3	1	1	14	9	7
Arsenal ...	5	2	2	1	11	2	6
Tottenham ...	5	3	—	2	17	8	6
West Ham ...	5	2	2	1	12	9	6
Brentford ...	5	3	—	2	13	12	6
Luton T. ...	5	1	1	3	11	16	3
Watford ...	5	1	1	3	4	18	3
Portsmouth ...	5	1	—	4	10	19	2
Millwall ...	6	1	—	5	11	39	—
Brighton ...	5	—	—	5	6	25	—
Bexley United ...	5	—	—	5	5	22	—

Aug. 24 v. PortsmouthA	4—2 W	Bobbins, Nix, Atkins, E. Fuller	LGE
„ 31 v. Luton TownA	5—3 W	L. Griffiths 2, E. Fuller 2, Eckloff	LGE
Sep. 4 v. MillwallH	5—2 W	Cutler 2, Atkins 2, Nix	LGE
„ 7 v. TottenhamA	1—4 L	L. Griffiths	LGE
„ 14 v. Bexley United ...A	1—0 W	Nix	LGE
„ 21 v. West Ham Utd. A	3—3 D	Atkins, Nix, Eckloff	LGE
„ 25 v. Charlton Ath.....H	0—1 L		SJFC
„ 28 v. TottenhamA	1—7 L	M. Griffiths	SECLC
Oct. 5 v. BrentfordH			LGE
„ 12 v. Q.P.R.A			LGE
„ 19 v. West Ham Utd.H			LGE
„ 26 v. ArsenalA			LGE

The Home ground for our Junior XI is Purley Way Playing Fields and all matches start at 11 a.m. so how about going along on Saturday to see the lads. Pitch No. 1.
LGE—League. SJFC—Southern Junior Floodlit Cup. SECLC—League Cup.

SUPPORTER'S CLUB NOTES

Christmas is nearer than we all think and we are already making preparations for our usual Bumper Christmas Draw. More details later but remember the Top Prize will be £100. Club Badges are now on sale at 2/- each. Available at all Huts and the Office.

Jackpot Winners v. Port Vale

1st Ticket	A7090	H. Shove, 74 Monacute Rd., New Addington.	£20 0 0
2nd Ticket	A2189	Mrs. Sayers, 24 Thirsk Rd., S.E.25.	£3 0 0
3rd Ticket	A3371	A. Coombs, 29 Huntley Rd., S.E.25.	£2 0 0
4th Ticket	A7401	D. W. French, 36 Hemberton Rd., S.W.9.	£1 2 6

Draw books are now being prepared for despatch to all members. If you require some in the meantime they are available at all huts and the Club Office. 34 prizes ranging from £1 to £100. Tickets 1/- each.

Three coaches travelled to Bristol for last week's game and bookings are going ahead for Notts County. Members are reminded of the need to book early to avoid disappointment. Fare 17/6d., under 15's and O.A.P.'s 15/-. Sorry to have to repeat it, these facilities are for Members Only.

AWAY MATCH TRAVEL DETAILS

v. Notts County on Saturday, 5th October (3 p.m.) Coaches leave Selhurst Park at 8.30 a.m. Fare 17/6d. O.A.P.'s and under 15's 15/-. Supporters Club Members Only. Membership Fee 1/-.

v. Oldham Athletic on Saturday, 19th October (3 p.m.). Coaches leave Selhurst Park at 7.00 a.m. Fare 25/-. O.A.P.'s and under 15's 22/6d. Supporters Club Members Only. Membership Fee 1/-.

British Railways will NOT be operating excursion rates for this match. Therefore the only means of watching our lads at Oldham will be by coach. Book early to avoid disappointment. Bookings can be made at the Glaziers Club on Wednesday evenings from 7.30. Phone: LIV 7948.

MOST PEOPLE read

THE CROYDON ADVERTISER

RONNIE ALLEN

Keeps you "In the Know"

DON'T MISS HIS
WEEKLY COLUMN
IN THE

CROYDON TIMES

CRYSTAL PALACE

(White)

KICK-OFF
7.30 p.m.

1. Bill GLAZIER

2. Terry LONG

3. Don TOWNSEND

4. George PETCHEY

5. Brian WOOD

6. Bert HOWE

7. Eddie WERGE

8. Cliff HOLTON

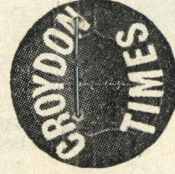
9. Dickie DOWSETT

10. Peter BURRIDGE

11. Ronnie ALLEN

Referee :

R. ALDOUS



LUTON TOWN

(Red)

1. Ron BAYNHAM

2. Bob MORTON

3. John BRAMWELL

4. David PACEY

5. Gordon FINCHAM

6. Mark LOWNDS

7. Mick FAIRCHILD

8. Gordon TURNER

9. Tom McKECHNIE

10. Gordon RIDDICK

11. Freddie JARDINE

Linesmen :

R. A. PAINE
(Orange Flag)

W. MORRIS
(Cerise Flag)

MATCH REPORTS

APPEAR EVERY FRIDAY
IN THE

STREATHAM NEWS
NORWOOD NEWS
TENJIE & ANERLEY NEWS
NORBURY & THORNTON
HEATH NEWS...



There are so many Supporters who we know have followed us for 40 years or more that we decided to print the table below. Perhaps this table of results since 1920-21 will refresh their memories of days gone by.

Year	Div.	Postn.	No. of Teams	Pts.	Goals	Divsn. Won by	Notes
1920-21	— IIIS	— First	— 22	— 59	— 70-34	— 59	Promoted to Div. 2
1921-22	— II	— 14th	— 22	— 39	— 45-51	— 56	*12-16
1922-23	— II	— 16th	— 22	— 37	— 54-62	— 53	*15-18
1923-24	— II	— 15th	— 22	— 39	— 53-65	— 54	
1924-25	— II	— 21st	— 22	— 34	— 38-54	— 59	Relegated to Div. 3 !!)
1925-26	— IIIS	— 13th	— 22	— 41	— 75-79	— 57	*12-13
1926-27	— IIIS	— 6th	— 22	— 45	— 84-81	— 62	
1927-28	— IIIS	— 5th	— 22	— 48	— 79-72	— 65	
1928-29	— IIIS	— 2nd	— 22	— 54	— 81-67	— 54	*1-2
1929-30	— IIIS	— 9th	— 22	— 46	— 81-74	— 68	*8-9
1930-31	— IIIS	— 2nd	— 22	— 51	— 107-71	— 59	
1931-32	— IIIS	— 4th	— 22	— 51	— 74-63	— 57	
1932-33	— IIIS	— 5th	— 22	— 46	— 78-64	— 62	
1933-34	— IIIS	— 12th	— 22	— 41	— 71-67	— 61	
1934-35	— IIIS	— 5th	— 22	— 48	— 86-64	— 61	
1935-36	— IIIS	— 6th	— 22	— 49	— 96-74	— 57	*5-6
1936-37	— IIIS	— 14th	— 22	— 38	— 62-61	— 58	
1937-38	— IIIS	— 7th	— 22	— 48	— 67-47	— 56	
1938-39	— IIIS	— 2nd	— 22	— 52	— 71-52	— 55	
1939-46	No Competition						
1946-47	— IIIS	— 18th	— 22	— 37	— 49-62	— 66	
1947-48	— IIIS	— 13th	— 22	— 39	— 49-49	— 61	
1948-49	— IIIS	— 22nd	— 22	— 27	— 38-76	— 62	A.F.R.-E. to Div. 3 (S)
1949-50	— IIIS	— 7th	— 22	— 44	— 55-54	— 58	*7-8
1950-51	— IIIS	— 24th	— 24	— 27	— 33-84	— 70	A.F.R.-E. to Div. 3 (S)
1951-52	— IIIS	— 19th	— 24	— 39	— 61-80	— 66	
1952-53	— IIIS	— 13th	— 24	— 43	— 66-82	— 64	
1953-54	— IIIS	— 22nd	— 24	— 40	— 60-86	— 64	*19-22
1954-55	— IIIS	— 20th	— 24	— 38	— 52-80	— 70	*19-20
1955-56	— IIIS	— 23rd	— 24	— 34	— 54-83	— 66	A.F.R.-E. to Div. 3 (S)
1956-57	— IIIS	— 20th	— 24	— 40	— 62-75	— 59	
1957-58	— IIIS	— 14th	— 24	— 43	— 70-72	— 60	
1958-59	— IV	— 7th	— 24	— 52	— 90-71	— 64	*6-7
1959-60	— IV	— 8th	— 24	— 50	— 84-64	— 65	
1960-61	— IV	— 2nd	— 24	— 64	— 110-69	— 66	
1961-62	— III	— 15th	— 24	— 42	— 83-80	— 65	*15-16
1962-63	— III	— 11th	— 24	— 47	— 68-58	— 62	*11-12

You're 'on the ball'

in Stanley Matthews Football Boots

Light, stream-lined and flexible, these modern football boots feature the latest refinements recommended by Stan himself to help soccer enthusiasts.



Stanley Matthews

FOOTBALLER OF THE YEAR
for the second time



The H.28, an entirely new light-weight boot for 1963 season. Low cut stream-lined upper, red instep straps and vulcanised sole with seventeen non-slip moulded-on studs; and smart white lacings and facings.

Men's sizes, 6-11 **43/II** H.18 2-5 **33/II**

SOUTH SUBURBAN
CO-OPERATIVE SOCIETY LIMITED
99 LONDON ROAD, CROYDON AND BRANCHES



By Courtesy of "Croydon Advertiser"
ROY LITTLE

MY MOST EXCITING MATCH

by **ROY LITTLE**

While I have lots of football memories of great games I have played in, I think perhaps my most exciting memory would be of a Semi-Final Cup-Tie played at Villa Park v. Sunderland in 1955. It was a happy game for me too, for I had one of those days when all seemed to go in my favour—another reason for remembering it!

The Semi-Final! One game to Wembley! Quite naturally excitement is high and tense. The rain teemed down that morning to such degree, that when our party got to Villa Park an hour before kick-off, the pitch was water-logged. Gates were finally opened thirty minutes before the off, with the rain still pelting down.

Naturally, the field churned up, mistakes were plentiful on a pitch than ran, slow, slow, quick, quick, slow. When many of us were thinking a goal would never come—either way—our outside-right, Paddy Fagan, picked up the ball on the halfway mark and was off. He cracked over a hard, low, centre and with the ball floating just within the penalty area, we saw one of our blue shirted players in mid-air meeting the ball with his head in a horizontal position.

The heavy sodden ball whizzed into the net like a rocket. The player who had headed it home, lay face down in the mud. Nobby Clark, our outside-left, was the player and he was out flat.

The remainder of the game was hard, naturally, and when Clarke went off with 15 minutes to go, it got harder! Three minutes to go and a similar header from Purdom for Sunderland, hit our cross-bar and was scrambled away and we held on to win the game.

Two headers—ours went in, and theirs hit the bar! The luck of a game that took us to Wembley; and certainly this must be my most exciting memory.

MOST PEOPLE read

THE CROYDON ADVERTISER

LEAGUE TABLES 1963-64

FOOTBALL LEAGUE DIVISION III (including 28th Sept.)

	P	W	D	L	Goals		Pts.
					F	A	
Bournemouth ...	9	7	1	1	19	6	15
Coventry City ...	9	6	1	2	22	8	13
Oldham Athletic ...	9	6	1	2	17	10	13
CRYSTAL PALACE ...	9	5	2	2	19	19	12
Shrewsbury Town ...	9	6	—	3	14	11	12
Q.P.R. ...	9	5	1	3	15	10	11
Brentford ...	9	4	3	2	15	15	11
Mansfield Town ...	9	4	2	3	17	12	10
Peterborough United ...	9	4	2	3	22	16	10
Port Vale ...	9	4	1	4	13	8	9
Colchester United ...	9	3	3	3	14	12	9
Watford ...	9	3	3	3	13	13	9
Bristol Rovers ...	9	3	3	3	13	14	9
Bristol City ...	9	3	3	3	14	15	9
Southend United ...	9	2	5	2	10	13	9
Hull City ...	9	2	3	4	10	15	7
Reading ...	9	2	3	4	12	21	7
Barnsley ...	9	2	3	4	23	26	7
Wrexham ...	9	2	2	5	9	19	6
Crewe Alexandra ...	9	1	4	4	7	12	6
Walsall ...	9	1	3	5	8	18	5
Luton Town ...	9	1	2	6	6	18	4
Millwall ...	9	1	—	7	5	21	4
Notts County ...	9	2	—	7	5	21	4

FOOTBALL COMBINATION DIVISION I (including 28th Sept)

	P	W	D	L	Goals		Pts.
					F	A	
Leicester City ...	7	5	1	1	22	7	11
Arsenal ...	7	5	1	1	20	7	11
Plymouth Argyle ...	6	5	—	—	11	3	10
Shrewsbury Town ...	6	4	2	—	15	5	10
Tottenham ...	6	4	2	—	20	10	10
West Ham United ...	5	3	2	—	17	9	8
Norwich City ...	6	4	—	2	12	8	8
Mansfield Town ...	7	3	2	2	13	12	8
Peterborough United ...	4	3	1	1	10	6	6
Notts Forest ...	5	2	1	2	15	8	5
Crystal Palace ...	6	1	3	2	7	9	5
Northampton Town ...	6	2	—	4	12	14	4
Luton Town ...	6	—	3	3	7	13	3
Cardiff City ...	6	1	1	4	8	16	3
Bristol Rovers ...	7	1	1	5	6	19	3
Notts County ...	8	1	—	6	10	26	2
Colchester United ...	5	1	—	4	7	28	—
Ipswich Town ...	7	—	—	7	7	28	—

MOST PEOPLE read

THE CROYDON ADVERTISER

FIXTURES and RESULTS 1963-64

FIRST TEAM

1963	Opponents	Results
S. Aug. 24	Coventry City A	1-5L
W. " 28	Reading A	0-0D
S. " 31	Mansfield Twn.H	3-1W
S. Sept. 7	Brentford A	1-2L
W. " 11	Reading H	4-1W
S. " 14	Shrewsbury H	3-0W
W. " 18	Luton Twn. A	4-0W
S. " 21	Bristol City A	1-1D
S. " 28	Port Vale H	2-0W
W. Oct. 2	Luton Town H	
S. " 5	Notts County A	
W. " 9	Watford H	
S. " 12	Millwall H	
Tu. " 15	Watford A	
S. " 19	Oldham A	
W. " 23	Crewe Alex. H	
S. " 26	Bristol Rovers H	
W. " 30	Crewe Alex. H	
S. Nov. 2	Q.P.R. A	
S. " 9	Wrexham H	
S. " 16	(1) H	
S. " 23	Hull City H	
S. " 30	Barnsley A	
S. Dec. 7	(2) H	
S. " 14	Coventry City H	
S. " 21	Mansfield Twn.A	
Th. " 26	Southend Utd. A	
S. " 28	Southend Utd. H	

1964

S. Jan. 4	(3)Bournemouth A
S. " 11	Brentford H
S. " 18	Shrewsbury A
S. " 25	(4)Peterboro' H
S. Feb. 8	Bristol City H
S. " 15	Port Vale A
S. " 22	(5)Notts Cty. A
S. " 29	Millwall H
S. Mar. 7	(6)Colchester H
S. " 14	Bristol Rovers A
W. " 18	(SF)Q.P.R. H
S. " 21	Walsall H
S. " 28	Colchester A
M. " 30	Bournemouth A
S. Apr. 4	Walsall A
S. " 11	Hull City H
S. " 18	Barnsley A
W. " 22	Peterboro' A
S. " 25	Wrexham A
S. May 2	Oldham H
S. May 2	(Final)

FOOTBALL COMBINATION

1963	Opponents	Results
S. Aug. 24	Luton Twn. H	1-1D
S. " 31	Mansfield Twn.A	2-3L
S. Sept. 7	Shrewsbury H	1-1D
S. " 14	Arsenal A	0-3L
S. " 21	Leicester City H	1-1D
S. " 28	Plymouth A	2-0W
S. Oct. 5	Notts County H	
S. " 12	West Ham A	
S. " 19	Norwich City H	
S. " 26	Bristol Rovers A	
S. Nov. 2	Tottenham H	
S. " 9	Northampton A	
S. " 16	Peterboro' H	
S. " 23	Notts Forest A	
S. " 30	Colchester H	
S. Dec. 7	Norwich City A	
S. " 14	Luton Town A	
S. " 21	Mansfield Twn.H	
S. " 28		

1964

S. Jan. 4	
S. " 11	Shrewsbury A
S. " 18	Arsenal H
S. " 25	Ipswich Twn. A
S. Feb. 1	Leicester City A
S. " 8	Plymouth H
S. " 15	Notts County A
S. " 22	Bristol Rovers H
S. " 29	Tottenham H
S. Mar. 7	Northampton H
S. " 14	Peterboro' A
S. " 21	Notts Forest H
S. " 28	Colchester A
M. " 30	Cardiff City H
S. Apr. 4	West Ham A
S. " 11	Cardiff City A
S. " 18	Ipswich Twn. H
S. " 25	

Copyright of the Football League

FOR THE RECORD

Saturday, 28th September

1st XI v. Port Vale (Home) Won 2-0. HT 0-0. Gate 15,044. *Team:* Glazier, Long, Townsend, Petchey, Wood, Howe, Werge, Holton (1), Dowsett (1), Burridge, Allen.

2nd XI v. Plymouth Argyle (Away) Won 2-0. HT 0-0. Gate 2,449. *Team:* Jackson, P. Barrett, J. Little, J. Holsgrove, Stephenson, Little R., P. Hanley, Birch (1), Forster (1), Kellard, Imlach.

Jun. XI v. Tottenham Jnrs. (Away) Lost 1-7. HT 0-2. League Cup 1st Round. *Team:* P. Jeavons, D. Payne, K. Thomas, J. Waterman, G. White, R. Low, E. Fuller, S. Atkins, R. Nix, L. Griffiths, M. Griffiths (1).

AWAY TRAVEL (British Railways)

v. Notts County on Saturday, 5th October (Kick-Off 3 p.m.) From Norwood Junction, Crystal Palace, Gipsy Hill, East Croydon, West Norwood, Thornton Heath, Selhurst or Norbury via. London Bridge to connect with the 9.15 a.m. from St. Pancras to Nottingham (Midland). Fare 25/-d. Return same day by either 5.44 or 6.20 p.m. from Nottingham.

v. Watford on Tuesday, 15th October (Kick-Off 7.30 p.m.) From the above mentioned stations by any train after 4 p.m. to London Bridge or Victoria, then by underground to Euston and thence any train to Watford High Street or Junction. Fare 7/6d. Return by any train same day.

GOAL SCORERS

FOOTBALL LEAGUE: Dowsett 5, Burridge 4, Allen 3, Werge 2, Holton 2, Petchey, Wood 1 each. Own Goals 1.

FOOTBALL COMBINATION: Birch 4, Forster, Griffiths M., P. Cutler 1 each.

MOST PEOPLE read

THE CROYDON ADVERTISER

**“TV you can
trust, radio
you can
rely on”**



That's the verdict
on radio and TV from



PHILIPS — THE FRIEND OF THE FAMILY

PRGT 4325

