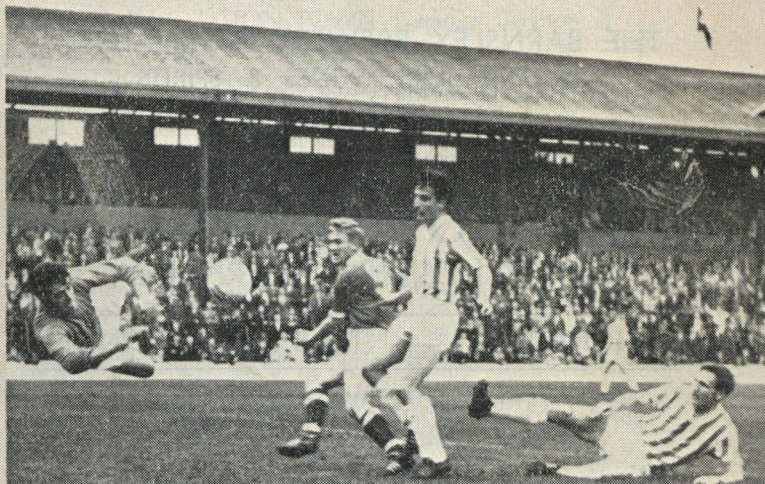




BARNSELEY FOOTBALL CLUB



Official Programme 4d.

QUEENS HOTEL

BARNLEY

R.A.C. The Premier Hotel A.A.

PUBLIC RESTAURANT — BALLROOM AVAILABLE
FOR DINNERS, RECEPTIONS, WEDDINGS, ETC.

CLOSE PROXIMITY TO THE GROUND

THE BARNLEY BREWERY COMPANY'S
FAMOUS ALES, WINES & SPIRITS

TELEPHONE No. 4192.

THE ROYAL HOTEL

CHURCH STREET, BARNLEY.

LUNCHEONS — TEAS — DINNERS

FIRST-CLASS COMMERCIAL AND
RESIDENTIAL ACCOMMODATION

THE BARNLEY BREWERY COMPANY'S
FAMOUS ALES, WINES AND SPIRITS

TELEPHONE: 365811.

Barnsley Football Club Limited

Founder (1887)—Rev. T. Preedy.

Directors—Mr. J. Richards, J.P., (Chairman);

Mr. A. Raynor, J.P., (Vice-Chairman);

Dr. J. Costello, Messrs. E. Dennis, W. Diggle, J. Hirst,

C. R. C. Lax, G. Pallister, R. F. Potter.

Club Medical Officer—Dr. J. Costello.

Manager—J. STEELE.

Secretary—F. R. VICARY.

Reg. Office—Oakwell Ground.

Telephones—4113 & 4573.

FRIDAY, SEPTEMBER 6th, 1963.

BARNLEY v. LUTON TOWN (League Division 3).

Behind the Scenes—Trainer's Tribute

by NOMAD

It's often thought that a trainer's only duty is to run onto the pitch with a magic sponge.

But there's much more to it than that, as our own trainer Norman Rimmington will tell you.

For his back-room tasks are almost endless. He spends every morning with the players and most afternoons restudying and inspecting boots . . . about 22 pairs of them.

Norman, who played 154 consecutive matches as goalkeeper for Hartlepoons and has also had experience with Wisbech, Buxton, and, of course, Barnsley, also has the part-timers to look after.

"The job keeps me very busy but I love it," he says. "And if the results are right it can be the most satisfying job in the world."

Norman's experience in the professional field has stood him in good stead. For the players know that generally he can come up with an answer to their problems.

And next time Norman trots on with that dripping sponge, remember that there's much, much more to his job than that.

Picture on cover by :

Barnsley News Pictures (ROY J. SABINE)

Covers the Match for your
local Morning and Evening
Newspapers

We specialise in WEDDING
and COMMERCIAL
Photography

12a, MARKET STREET,
BARNSELY or Ring 4444

HAIGH BROS. LIMITED

Newsagents, Stationers,
General Merchants
and Tobacconists

6, ELDON ARCADE
56 ELDON STREET
BUS STATION
and RAILWAY
BOOKSTALLS

Wholesale Depts. :
Burlington Arcade. Tel. 3627-8

GREYHOUND RACING

VISIT
**DILLINGTON
PARK STADIUM**
HIGHSTONE ROAD
BARNSELY
Racing every
Wednesday and
Saturday at 7-0 p.m.

For all your
PHOTOGRAPHIC
COSMETIC and
MEDICINAL
REQUIREMENTS

G. H. ROCK (Chemists) Ltd.

1, PEEL STREET, BARNSELY
"MOORHOUSES"
MARKET HILL, BARNSELY
Also at Dodworth, Wilthorpe
and Hoyland Common

From the Manager's Office... The First of the Season

by the Manager, Mr. JOHNNY STEELE

Well we have broken our duck ! The point which we gained from our home game with Millwall was our first of the season.

And while I should obviously have liked to have had more from our opening spell several other clubs are either in the same position or have not collected one at all at the time of writing.

So despite all those grim forebodings which we have been hearing about the situation could be much worse.

But for me the main thing from Saturdays match, which I did not see because I was on a scouting mission, was the report on my return that some of the players were beginning to regain their confidence.

In football once a players confidence goes, his play suffers, he becomes a target for the crowd and things only get worse.

So in the second half when our play came truer to form should be a tonic for the players — and of course, ourselves.

Now is the time our supporters — and I know how well they can do it — to really back the team with their vocal support. That could really help them.

BRITISH RAILWAYS

CHEAP FARES FOR PARTY OUTINGS

If your party numbers 8 or more for a day outing by any train, British Railways can offer:-

25% reduction on ordinary return fare.

Guaranteed reserved seats.

Arrangements for meals, coach tours, theatre shows, &c.

Free rail tickets to organisers of large parties (25 or more passengers).

Representative will call if desired.

Full details from :—

Traffic Manager, Farm Buildings, Granville Road,
SHEFFIELD, 2. or telephone 29611 — ext : 25.

BRITISH RAILWAYS

Welcome to.....

LUTON TOWN

Founded in 1885 Luton were the pioneers of professional football in the South of England, employing paid players as early as 1891.

The Hatters were relegated from Division Two last season.

Goalkeeper *RON BAYNHAM*, with the club since 1951, has represented England several times.

Right-back *ALAN DANIEL* gained a first-team place last season. He signed professional for Luton in 1958.

JOHN BRAMWELL, left-back, joined Luton from Everton in 1960. He also plays at wing half.

BOB MORTON, right-half, has played in most positions for Luton since 1948. Centre-half *GORDON FINCHAM* has been with Leicester and Plymouth and joined the club two months ago. *DAVID PACEY*, left-half, has played for the England Under-23 side.

Outside-right, *HARRY WALDEN* joined Luton from Kettering in 1961.

GORDON TURNER, inside-right, has been the club's top goalscorer for eight seasons now.

Centre-forward, *RON DAVIES*, signed from Chester in 1962, is equally as dangerous when near goal.

Inside-left *GARETH SALISBURY*, played for Norwich last season and was quickly snapped up by Luton when not retained.

FRED JARDINE, outside-left, was born in Edinburgh and played for Dundee for two seasons before joining Luton at the end of the 1960-61 season.

SEE
Barnsley
Permanent
Building Society
 FOR
 HOUSE PURCHASE
 AND INVESTMENT
 FACILITIES

Head Office :
 PERMANENT BUILDING,
 BARNSELY.

★
Bus
Station
Cafe

★
 MIDLAND STREET
 BARNSELY

Telephone 3454

Hot and Cold Snacks
 until 9 p.m.

Telephone : Barnsley 5867

H. Crossland L^{td}.

The Music Centre
 27, MARKET STREET,
 BARNSELY

ORGANS, PIANOS,
 GUITARS, DRUMS,
 ACCORDIONS,
 SOUND EQUIPMENT, ETC.
 SHEET MUSIC
 Consult Specialists for Music

UNDECIDED?

The Regular Army offers excellent training in over two hundred different trades plus good pay and generous leave. Want to know more?

A Regular Army Careers Officer will be at the Ministry of Labour Employment Exchange, York Street, Barnsley, on Mondays and Wednesdays (9-4) and Saturdays (9-12) and he will be very pleased to give you any information or advice.

Half-Time Scores.....

SCORE BOARD No. 1	SCORE BOARD No. 2
A	A
B	B
C	C
D	D
E	E
F	F
G	G
H	H
I	I
J	J
K	K
L	L

NEXT MATCHES AT OAKWELL—

Wednesday, Sept. 11th—BARNSELY v. DARLINGTON
 Football League Cup—1st Rd. Replay Kick-off 7-15 p.m.

Saturday, Sept. 14th—RESERVES v. LIVERPOOL RES.
 Central League Kick-off 3-15 p.m.

CALL AT

"THE PARAGON"

and open a BUDGET Account

MENS AND BOYS OUTFITTING
(including made-to-measure tailoring)

FOOTWEAR & HOUSEHOLD GOODS
LADIES AND CHILDRENS FASHIONS
see also our huge selection of

TOYS at

THE PARAGON STORES

(To the rear of Butterfields)

HANSON ST. BARNSELEY Tel 3551

BARNSELEY BITTER

Brewed only at

OAKWELL

by the

Barnsley Brewery Co. Ltd.

BARNSELEY (Red Shirts, White Shorts).

Right

¹ WILLIAMSON

² HOPPER

³ MURPHY

Left

⁴ NICOL

⁵ WINSTANLEY

⁶ HOUGHTON

⁷ SHEAVILLS

⁸ KERR

⁹ LEIGHTON

¹⁰ MURRAY

¹¹ O'HARA

Referee—

J. PARKINSON
Blackburn

DENTONS
for CAMERAS, FILMS,
Everything Photographic

Linesmen—

G. W. LYNCH,
Bradford (Red flag)

H. THOMPSON
Stockport (Orange flag)

¹¹ JARDINE

¹⁰ SALISBURY

⁹ DAVIES

⁸ TURNER

⁷ WALDEN

⁶ PAGEY

⁵ FINCHAM

⁴ MORTON

³ BRAMWELL

² DANIEL

Left

¹ BAYNHAM

Right

LUTON TOWN (White Shirts, Black Shorts).

DOWNINGS

for STEEL, STEELWORK & PIPES

Telephone : Barnsley 3211 (7 lines)

LARGE STOCKS OF SHEET ASBESTOS ALWAYS AVAILABLE

VIVO
Food Stores
bring **YOU**
BRIGHTER & BETTER
SHOPPING

The BEST for LESS
PLUS
PERSONAL SERVICE

After the Match
call at

Raynor's
Cafe
The Arcade

HOT PIES
A SPECIALITY

KICK-OFF IN THE RIGHT WAY

By Opening an Account at

The York County Savings Bank

PEEL SQUARE, BARNSELY.
169, MIDLAND ROAD, ROYSTON
CHEAPSIDE, WOMBWELL
30x, DONCASTER ROAD, GOLDTHORPE.

The first £15 of Interest in General Department Free of Income Tax.
Interest Rates up to 5% in the Investment Department.

LEAGUE DIVISION III.

	P	W	D	L	F	A	W	D	L	F	A	Pts.
Coventry City	3	1	0	0	5	1	2	0	0	6	0	6
Bournemouth	3	2	0	0	3	0	0	1	0	1	1	5
Southend Utd.	3	0	1	0	1	1	2	0	0	4	1	5
Queens Park R.	3	1	0	0	3	0	1	0	1	3	3	4
Colchester Utd.	3	1	0	0	4	1	0	2	0	1	1	4
Port Vale	3	2	0	0	5	1	0	0	1	0	1	4
Oldham Ath.	3	1	0	0	2	1	1	0	1	1	1	4
Shrewsbury Town	3	1	0	1	2	2	1	0	0	1	0	4
Bristol City	3	1	0	0	3	0	1	0	1	3	5	4
Brentford	3	1	0	1	5	3	0	1	0	1	1	3
Watford	3	0	1	0	3	3	1	0	1	3	2	3
Crewe A.	3	1	1	0	2	1	0	0	1	1	2	3
Hull City	3	0	2	0	0	0	0	1	0	3	3	3
Luton Town	3	1	0	0	1	0	0	1	1	1	2	3
Peterborough	3	1	0	0	5	2	0	1	1	0	3	3
Millwall	3	1	0	1	2	3	0	1	0	1	1	3
Crystal Palace	3	1	0	0	3	1	0	1	1	1	5	3
Mansfield Town	3	1	0	0	2	1	0	0	2	1	4	2
Reading	3	0	2	0	1	1	0	0	1	0	2	2
Wrexham	3	0	0	1	1	3	0	1	1	3	6	1
BARNSELY	3	0	1	1	1	2	0	0	1	1	4	1
Bristol Rovers	3	0	1	1	1	2	0	0	1	1	3	1
Walsall	3	0	1	1	4	0	0	1	0	1	0	1
Notts County	3	0	0	2	0	4	0	0	1	1	4	0

Up to and including Tuesday, September 3rd, 1963.

The Printers of this Programme ★

HIBBERT, ASHTON & YOUEL LTD.

★ *Printers, Bookbinders and Stationers*

12, MARKET STREET, BARNSELY

Agents for Ordnance Survey Maps. Tel. 3348.

AFTER THE GAME

call at the

Wine Shades Hotel

Opposite Market Place

Stage Shows

Monday Night

Wednesday Noon & Night

Friday Night

Saturday & Sunday Night

(Mine Hosts : Harry & Alice)



Aldisette

Projectors

Arthur Wright & Son

Photographic Chemists

Church Street, Barnsley

Telephone 3672

C. D. POTTER AND SONS LTD.

BUILDERS AND
PUBLIC WORKS
CONTRACTORS

Office and Works—
121 DONCASTER ROAD
BARNSELY.

THE TEAM WITH 55,000 MEMBERS

Provides Cash Grants For :-
Hospital In-Patients
Hospital Out-Patients,
Spectacles, Dentures,
Surgical Appliances,
Home Helps, Specialist
Fees and Convalescence
with Fare and Pocket
Money!

Details From :-
The Hospital Services Council
Peel Square, BARNSELY.

Phone : 3973.

Fixtures and Results 1963-64

League Division 3.

Aug. 24—Colchester United	a	1—4
27—Southend United	h	0—1
31—Millwall	h	1—1
Sept. 6—Luton Town	h	
9—Southend United	a	
14—Hull City	a	
17—Watford	h	
21—Bournemouth	h	
27—Wrexham	a	
Oct. 1—Watford	a	
4—Queens Park R.	h	
8—Oldham Athletic	h	
11—Walsall	a	
16—Oldham Athletic	a	
19—Brentford	h	
22—Bristol Rovers	a	
26—Shrewsbury Town	a	
29—Bristol Rovers	h	
Nov. 2—Bristol City	h	
9—Port Vale	a	
16—F.A. Cup 1st Round		
23—Crewe Alexandra	h	
30—Crystal Palace	a	
Dec. 7—F.A. Cup 2nd Round		
14—Colchester United	h	
26—Coventry City	h	
28—Coventry City	h	
Jan. 4—Notts County	h	
11—Luton Town	a	
17—Hull City	h	
25—Mansfield Town	a	
Feb. 1—Bournemouth	a	
8—Wrexham	h	
15—Queens Park R.	h	
22—Walsall	h	
29—Reading	a	
Mar. 7—Shrewsbury Town	h	
14—Bristol City	h	
20—Reading	h	
28—Notts County	a	
30—Peterborough Utd.	a	
31—Peterborough Utd.	h	
April 4—Crewe Alexandra	h	
11—Crystal Palace	a	
13—Millwall	a	
18—Mansfield Town	h	
20—Port Vale	h	
25—Brentford	a	

Central League

F A

Aug. 24—Blackburn Res.	h	0—0
26—Blackpool Res.	a	0—3
31—Chesterfield Res.	a	0—1
Sept. 7—Sheffield Utd. Res.	a	
10—Bury Reserves	a	
14—Liverpool Res.	h	
21—Aston Villa Res.	a	
28—Leeds United Res.	h	
Oct. 5—Wolverhampton Res.	a	
9—Sheffield Wed. Res.	a	
12—Burnley Res.	h	
19—Manchester U. Res.	a	
26—Preston Res.	h	
Nov. 2—Bolton W. Res.	a	
9—Derby County Res.	h	
16—Huddersfield Res.	a	
23—Newcastle Utd. Res.	h	
30—West Brom Res.	a	
Dec. 7—Everton Res.	h	
14—Blackburn Res.	a	
21—Chesterfield Res.	h	
28—Manchester C. Res.	a	
Jan. 4—F.A. Cup 3rd Round		
11—Sheffield Utd. Res.	h	
18—Liverpool Res.	a	
25—Manchester C. Res.	h	
25—F.A. Cup 4th Round		
Feb. 1—Aston Villa Res.	h	
8—Leeds United Res.	a	
15—Wolverhampton Res.	h	
15—F.A. Cup 5th Round		
22—Burnley Res.	a	
29—Manchester U. Res.	h	
29—F.A. Cup 6th Round		
Mar. 7—Preston Res.	a	
14—Bolton W. Res.	h	
14—F.A. Cup Semi-Final		
21—Derby C. Res.	a	
27—Stoke City Res.	h	
28—Huddersfield T. Res.	h	
30—Stoke City Res.	a	
April 4—Newcastle Utd. Res.	a	
11—West Brom Res.	h	
18—Everton Reserves	a	
25—Sheffield Wed. Res.	h	
May 2—F.A. Cup Final		
Blackpool Res.	h	

SPORTS DEPARTMENT
New Street . . Island Corner
BARNSELY
Telephone 3281

**BARNSELY BRITISH
CO-OPERATIVE
SOCIETY LTD.**

For
ALL SPORTS EQUIPMENT
by Famous Makers
Special Terms to
Clubs and Schools

J. HILL & Sons Ltd.

(Barnsley) Ltd.

**Haulage Contractors
and Quarry Owners**

Sand & Gravel, Pitching Stone,
Lime, Cement,
Slag, Ashes, Red Shale, Etc.
Agent for Eastwood's Humber
Cement, Nett.
Small quantities supplied.

**27, Old Road,
Smithies, Barnsley.**

Telephone 3702

J. H. FREEMAN
and Co. Ltd.

COAL AND COKE
Distributors in all Districts

Pink Paraffin
Delivery Service operated

**PONTEFRAC
ROAD
SIDINGS** Tel.
BARNSELY 2147.

Telephone : 3330.

MORTON'S
Fish
Restaurant

**9, Wellington Street,
Barnsley.**
(Next door to Theatre Royal)
Accommodation for 100

Supporters Club Topics....

A new season is upon us and there are literally hundreds of jobs to be undertaken in Supporters' Club circles this term.

There are so many that none of our members need be inactive. We want all the help we can get and that is why we appeal to anyone who isn't already a member to join now.

Looking in from the outside it might seem that the club doesn't take much running. But I can assure you that this is certainly not the case.

So join now and do the club a good turn.

**GIFTS FOR CHRISTMAS
AND ALL OCCASIONS**

TOYLAND
THE ARCADE

**MECCANO AND HORNBY STOCKISTS
TOYS, BOOKS, GAMES, STATIONERY
CAKE DECORATIONS
FINE SELECTION OF GREETING CARDS**

Oakwell Echoes.....

Jimmy Sheavills, the former Peterborough player, made his debut for the club against Darlington in the League Cup on Wednesday night Brian Edgley, our inside forward, is ill in hospital with bronchitis . . . There is still time for you to buy season tickets. The prices are centre-stand £5 15s. for shareholders and £6 for non-shareholders; Wing Stand £4 6s. for shareholders and £4 10s. for non-shareholders The new F.A. Diary and the F.A. News are now available from the Football Association. The Diary costs 4s. 6d., including postage and an annual subscription to the F.A. News is 15s. (12 issues). Orders with a remittance should be sent to the Football Association, 22, Lancaster Gate, London W. 2 The music you will be hearing tonight comes from gramophone records which have been kindly loaned to the club by Top Rank of Market Street, Barnsley.

APPEARANCES AND GOAL SCORERS

Division Three— Hill 1, Hopper 3, Brookes 1, Nicol 3, Winstanley 3, Houghton 3, Proven 1, Mulligan 2, Leighton 3, Kerr 3, O' Hara 3, Williamson 2, Murphy 2, Earnshaw 2, Murray 1.

Scorers— Leighton 1, O'Hara 1.

Central League— Williamson 1, Craven 3, Lawton 2, Wood 3, Rutherford 3, Farnsworth 3, Sheavills 2, Cochrane 3, McDonald 3, Murray 2, Earnshaw 1, Hill 2, Proven 2, Brookes 1, McCarthy 1, Mulligan 1.

Tel. 4900

Woodworkers' Supplies

(Prop.: R. W. Oram)

HAYES CROFT,
NEW STREET, BARNSELY.

Barnsley's Most Central
Do It Yourself Shop

Plywoods, Mouldings, Hardboard,
Timber, Polishes, Fittings

All Requirements for the Home
Craftsman and Tradesman.
Free Delivery.

ALWAYS ENJOYABLE

Beckett Bros.

Quality Mineral Waters

SHAW LANE,
BARNSELY

Telephone 2828

The Yorkshire Traction Co. Ltd.

LARGE FLEET OF MODERN COACHES
FOR PRIVATE PARTIES

SEE PRESS NOTICES FOR DETAILS OF

EXCURSIONS TO BARNSELY A. F. C.
"AWAY" MATCHES

EXCURSION
ENQUIRIES AT:
BUS STATION
TEL. 2086.

PRIVATE HIRE ENQUIRIES:
THE DEPOT,
UPPER SHEFFIELD ROAD
TEL. 2476

Contractors' Sales (Barnsley) Ltd.

8-14 Doncaster Road

BARNSELY

Telephone 2341

VISIT OUR SHOWROOMS
FOR ALL THE LATEST IN

COOKING RANGES

SINK UNITS

BATHROOM SUITES

TILED FIREPLACES, Etc.

Telephone
2586

Established
1889

J. UTLEY & SON LTD.

**GENERAL
CONTRACTORS**

**We Specialise in Repairs
and all Maintenance Work.**

**GOLD STREET
BARNSELY**

Frank Bird

Gentlemen's Outfitter

**MAENSON DAKS
BURBERRY**

28/30 THE ARCADE

SHIRT BAR

44, ELDON STREET

3, ELDON ARCADE

Telephone 3891.

HIRST'S

**CELEBRATED
PORK PIES**



**DELICIOUS
FOR ANY MEAL**