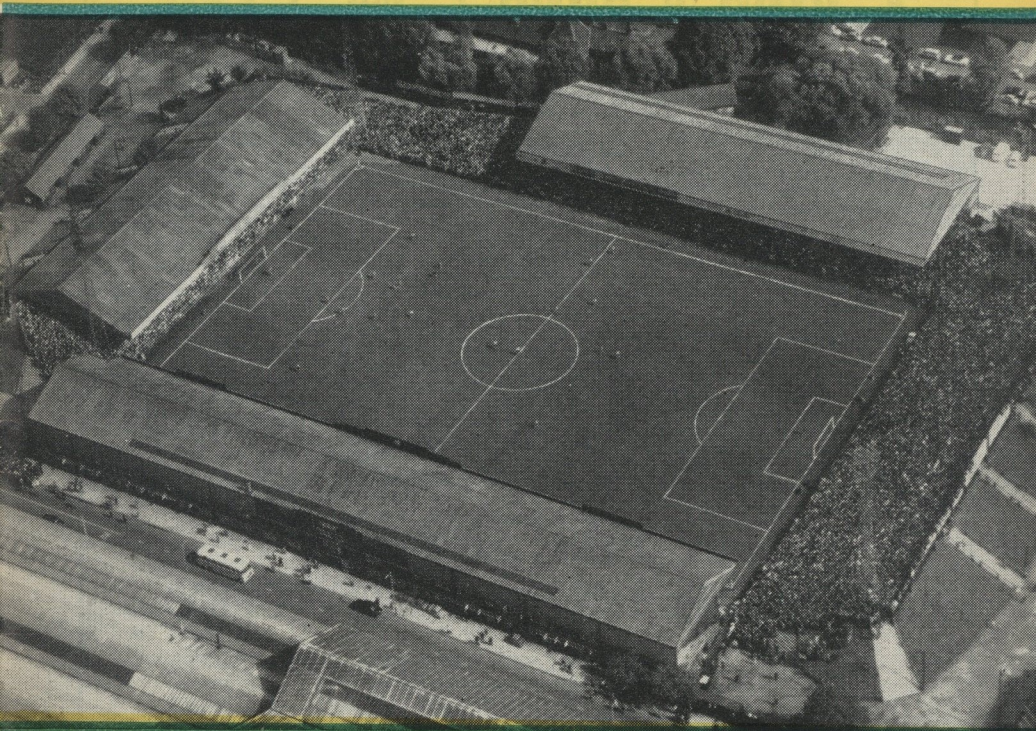




Nº 1476

NORWICH CITY FOOTBALL CLUB

F.A. CUP SEMI-FINALISTS, SEASON 1958-59
FOOTBALL LEAGUE CUP WINNERS, SEASON 1961-62



FOOTBALL LEAGUE (Division II)

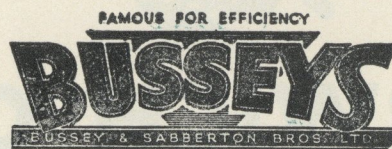
SATURDAY, 24th NOVEMBER, 1962

Norwich City v. Luton Town

PRICE **4d.** EACH

CAR REPAIRS — SELF DRIVE HIRE — DRIVING TUITION

FORD MAIN DEALERS
PALACE STREET
NORWICH



BRANCH GARAGE
THORPE ROAD
NORWICH

GOOD USED CARS ALWAYS IN STOCK

Keep your wheels turning with A. KING & SONS (STEEL STOCKHOLDERS) LTD.

East Anglia's largest Steel Stockholders

A member of the Metropole Industries Group

Hall Road
Norwich, Nor54B



Telephone
Norwich 28541/7

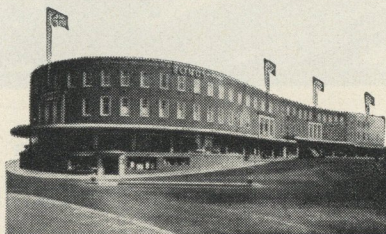
MAN'S SHOP



60 DEPARTMENTS

A FINE STORE WORTHY OF A FINE CITY

CAR PARK



COFFEE BAR

ALL SAINTS GREEN, NORWICH, Telephone: 23166
also NORWICH STREET, DEREHAM, Telephone: 89

NORWICH CITY FOOTBALL CLUB

President: THE HON. MRS. PHYLLIS BARCLAY, M.B.E., J.P.

Vice-President: A. SOUTH, J.P.

Directors:

GEOFFREY C. WATLING (Chairman)

G. F. B. FISH (Vice-Chairman)

JAMES L. HANLY

ALD. F. C. JEX, O.B.E., J.P.

H. ROBINSON, F.C.A.

Hon. Medical Officer: DR. A. WOOLSTONE

Secretary: A. E. WESTWOOD
(Telephone 21514)

Ground: CARROW ROAD

CLUB NOTES

This afternoon we welcome one of our oldest rivals, Luton Town, to Carrow Road. We first had the pleasure of entertaining them in our Southern League days and we met them often between the two wars. Since the last war, however, we have not met them on many occasions, but in the past two seasons we have beaten them three times in four meetings. Last season, at Carrow Road, they caught us on the wrong foot and deservedly beat us by four clear goals, so let us hope the lads are on the right foot today. Early this season the "Hatters" had a bad spell, and although they have shown improved form recently they are still near the bottom of the Second Division Table but, as we saw last year, they can rise to the occasion, and we should witness an interesting game.

The several thousand supporters who travelled to Stamford Bridge on Saturday last were no doubt disappointed that we returned pointless, but I am sure they will agree that the lads fought well and that Chelsea are a good side and will take some beating at home. Ronnie Ashman had many interesting tussles with local boy Barry Bridges, who led the Chelsea attack, and our young 19-year-old Colin Worrell turned in another promising display.

The Reserve team returned to winning ways by defeating Crystal Palace at Carrow Road by six goals to one. It was unfortunate that the Palace were reduced to nine men in the second half, but our lads must be given credit for scoring two early goals when the visitors were at full strength. Our goal scorers were Conway (2), Lloyd (2), Salisbury and Sutton.

The "B" team visited Harleston in an East Anglian League game and were well beaten by a more experienced side by four clear goals.

INTERNATIONAL FOOTBALL LEAGUE MATCH

The Football League v. The Italian Football League

AT Highbury, London

ON 29th NOVEMBER, 1962, kick-off 7.30 p.m.

Tickets in advance for this match will be available from THE SECRETARY, ARSENAL FOOTBALL CLUB, ARSENAL STADIUM, Highbury, London, N.5, as follows:—

NUMBERED AND RESERVED SEATS

Upper Tiers—East and West Stands, 15/- (Centre)

Upper Tiers—East and West Stands, 10/- (Wing)

UNRESERVED SEATS

Lower Tier—East Stand, 7/6.

Applications for tickets should be accompanied by remittance and stamped addressed envelope for return of tickets.

Admission to Enclosure 4/-, and Terraces 3/-, will be by cash at the turnstiles.

FORTHCOMING MATCHES

Saturday, 1st December—

Football Combination v. NOTTS FOREST RESERVES; kick-off 3 p.m.

Saturday, 8th December—

Football League v. SCUNTHORPE UNITED; kick-off 3 p.m.



Heatrae

ELECTRICAL PRODUCTS

**Certain Winners at Home
or Away**

HEATRAE LTD. Heatrae Works • Norwich • Norfolk

TEN YEARS AGO

Norwich City kept themselves well in the running for promotion from Division III (South) by beating Newport County 2—0 in front of a Carrow Road crowd of 23,891. City were without Gavin, who was playing for Eire against France in Dublin the following day, but goals from Ackerman and Johnston saw the Canaries home.

Even so, Bristol Rovers kept their noses three points in front at the top of the table.

But while, on the other side of the world, New South Wales were beating the South Africans by five wickets, thoughts here were turning to the F.A. Cup. Tonbridge qualified to entertain City, and Norfolk's interest was increased by the visit of Yarmouth to Guildford.

Both matches, played in cold, wintry weather, were drawn 2—2. Yarmouth's performance coming as a real surprise. Their goals came from Plunkett and Keaveney and it was not until seven minutes from the end that Guildford earned a replay. But they lost that, through an own goal. Their team? To refresh the memory—Canning; K. Newland, Arnold; J. Ivill, D. Bullock, E. Lewis; J. Keaveney, Cutting, Plunkett, Bradley, Davidson.

City, on the other hand, were a little lucky. With Ackerman injured after scoring twice they had to fight hard to avoid defeat at Tonbridge, and to this day the replay crowd will say that the 89th minute goal that put them in the next round was scored from an offside position by Johnny Summers.

And the City team (with replay changes in brackets):—Nethercott; Morgan (Duffy), Lewis; Dutton, Foulkes, Ashman; Gavin, Johnston (Kinsey), Ackerman (Johnston), Rattray, Summers.

The rewards for victory? For Yarmouth a home tie with Wrexham, for the Canaries a visit to—Brighton, of course!

ATTENTION! — Ours is personal . . .

Consult **THE SPORTS SPECIALISTS**

Tom Stevenson (Sports) Ltd.

for all your Sports Requisites

FOOTBALL • HOCKEY • BADMINTON • SQUASH • TABLE TENNIS
and all **INDOOR GAMES**

Only address:

SWAN LANE, off London St., Norwich, Nor 57G (Tel. Norwich 26413)

Caravans

Buying or selling

your better value traders are

NORWICH CARAVANS

Thorn Lane, and Boundary Road,
Norwich, Tel. 26641 or 48150

Score With RAGUS!

PET PUPPIES and ADULTS
SHOW STOCK
CRUFTS WINNERS AT STUD
REASONABLE PRICES
ALL YEAR ROUND BOARDING
EXPERT SUPERVISION
RAGUS NORWICH TERRIER and
CORGI KENNELS
WICKLEWOOD, WYMONDHAM, NORFOLK
Phone: Wymondham 2358

TODAY'S VISITORS

In 27 visits to Norwich, dating back to 1905, Luton Town have been beaten 16 times, have won five times themselves, with the other six games being drawn.

But it is the recent games between the clubs that have made the Hatters so well known to Norwich supporters. And in particular the games of the spring of 1959 when, after a 1—1 draw at White Hart Lane, Luton beat the Canaries, by a Bingham goal, in the semi-final replay at Birmingham.

In the early days of their acquaintance City beat Luton by 6—1 and 6—0 margins. They beat them twice, two seasons ago; but supporters don't want to be reminded of the 4—0 home defeat of last season.

Now managed by Bill Harvey, the Hatters gained only their third Division II victory of the season when they beat Walsall 4—3 at home last week. The men City will be meeting this afternoon are:—

RON BAYNHAM (Goalkeeper). Has been with Luton Town since 1951. Secured from Southern League club, Worcester City. He has represented England on several occasions. Played for the Football League on two occasions and also for England "B" team versus Yugoslavia "B". Was a member of the F.A. Touring Party to South America in 1959.

B. McNALLY (Full Back). Can occupy either full back positions. Came from the League of Ireland club, Shelbourne, and has been with Luton since May, 1956. Played for Eire "B" versus Rumania in Dublin in 1957, and also for Eire versus Czechoslovakia.

JOHN BRAMWELL (Full Back). One of the two players who joined Luton from Everton when Billy Bingham, the Irish international was transferred to that club in October, 1960. Is a very capable player and worthy to be considered for international honours.

R. MORTON (Wing Half or Centre Forward). Local born and has been with the club since 1948. Played for England "B" versus Switzerland "B" team, the Football Combination versus the Dutch XI (on two occasions) and also for the Football Association versus the Army. Was chosen as Reserve for England at Wembley in 1955 and again when they played Ireland in 1958. Usually a wing half but has made numerous appearances at centre forward.

A GOOD GOAL!

Save with the

NORWICH BUILDING SOCIETY

St. Andrew's House, Norwich Tel: 21367

Mortgage facilities available

Shares and Deposits in this Society are Trustee Investments
Member of the Building Societies Association



★ MUSIC ★ RECORDS ★ INSTRUMENTS

W. E. WILLSON'S (Music) LTD.

24 WHITE LION STREET, NORWICH

Established 1895 NOR 43E Telephone 26414

★ "POPS" CLASSICAL TEACHING ★ Try us first for ALL MAKES (Personal Attention) ★ ALL MAKES SUPPLIED (Premier DRUM AGENTS)

D. PACEY (Wing Half). Born in Luton, signed for the club in 1956. Has played for the F.A. versus the R.A.F., and was also a member of the England Under-23 team against Germany and Italy. Very strong player with a liking for getting among the goalscorers.

JOHN GROVES (Wing Half). Won Derbyshire schoolboy honours and was signed by Luton when only 15. Uses his height to great advantage and is a most accurate distributor of the ball.

H. WALDEN (Outside Right). Joined Luton from Kettering in January last year and stepped straight into the first team at Norwich, making 34 League and Cup appearances last season. Has a very forceful shot.

T. McKECHNIE (Inside Forward). Born Glasgow and came here direct from Rob Roy at the end of season 1960/61. Played consistently in the first team last season, making 36 appearances in League and Cup.

R. DAVIES (Centre Forward). Signed from Chester, where he was leading goal-scorer last season. Scored his first goals for the club against Walsall last Saturday.

A. McGUFFIE (Wing Half or Inside Forward). Signed professional forms for Luton in September, 1954. Has made numerous appearances in the first team since his demob from the Army. Is an excellent distributor of the ball with a flare for coming through to have a shot at goal.

FRED JARDINE (Outside Left). Born in Edinburgh. Played for Dundee for two seasons before coming to Luton at the end of season 1960/61. Has shown much promise since he arrived here.

NORWICH CITY FOOTBALL SUPPORTERS' CLUB

JACKPOT WINNERS, SATURDAY, 10th NOVEMBER, 1962

8459 Mr. D. Carter, 70, Portland Street, Norwich. £75.
16071 Not claimed. £45.
11663 Mr. P. E. Booth, 43, Chase Avenue, King's Lynn. £30.
136 Not claimed. £5.
2885 Not claimed. £5.
13955 Mr. E. R. Ninham, Loddon Vicarage, Loddon. £5.
5657 Mr. A. Dack, 7, Park Lane, Scarning. £5.
19492 Mr. H. Naunton, 12, Rye Close, Norwich. £5.

TUBULAR SCAFFOLD FOR SALE, HIRE OR ERECTION. Self-lock scaffolding for maintenance and Do-It-Yourself jobs. Write for details to

Head Office
COLEGATE
NORWICH

Jewson

Telephone:
29391 (10 lines)
(24 hour service)

Branches include:—Gt. Yarmouth, Lowestoft, Dereham, Fakenham, Diss, Lincoln, Earish, etc.

927 Coy. R.A.S.C. (INF. BDE. TPT.) (TA.)

WANTS

SENIOR N.C.O.'s
DRIVERS
CLERKS
BUTCHERS
COOKS

A Limited Number of Vacancies for the Right Applicants to be trained as Drivers.

One Vacancy exists in each of the following trades in the R.E.M.E./T.A.: Sheet Metal Worker, Clerk, Storeman.

APPLY TO: 927 COY. R.A.S.C. (Inf. Bde. Tpt.) (T.A.)
T.A. CENTRE, NELSON BARRACKS,
NORWICH, NOR 47P Telephone 24717

TELEPHONE 24461

Lansdowne Hotel

A.A. and R.A.C. APPOINTED

THORPE ROAD, NORWICH
THREE MINUTES' WALK FROM THE GROUND

FULLY LICENSED

- ★ FIFTY BEDROOMS ★ LARGE RESTAURANT
- ★ BANQUETING SUITE
- ★ PRIVATE FUNCTIONS CATERED FOR
- ★ WHITBREAD'S FAMOUS BEERS ALWAYS AVAILABLE

For Radio - T.V. - Refrigerators
and Washers

★ TRY **WINDMILL
ELECTRICS**
LIMITED

68 St. Augustine's Street, Norwich
TELEPHONE NORWICH 27591

PARTIES for Day Outings

If there are eight or more in your party, you can save 25% on your fares and we relieve organisers of all worry by making arrangements for their entire programme. Reserved accommodation without charge, free tickets to organisers according to the number of passengers. If your party runs into hundreds, ask for a special train: commission paid on full train loads for a guaranteed number of passengers.

Ask your local station master for full details.

BRITISH RAILWAYS

Norwich Surgical Stores

JOCK STRAPS
SURGICAL GOODS
AND APPLIANCES

55 PRINCE OF WALES ROAD
TELEPHONE: 26080

36 MAGDALEN STREET
TELEPHONE: 20613



PREPARE FOR THE UNEXPECTED . . .

by joining one or both Hospital Contributory Schemes, organised on a non-profit-making basis and run by Voluntary Committees.

- (1) 3d. per week, with Cash, Maternity Optical, Dental and miscellaneous grants.
- (2) Graduated scale of subscriptions, from 10d. per week onwards, for grants to assist towards cost of Hospital Private Ward and Nursing Home Treatment.

WRITE FOR FULL PARTICULARS OF BOTH SCHEMES TO
THE SECRETARY,

NORFOLK AND SUFFOLK HOSPITALS
CONTRIBUTORS' ASSOCIATION
38, St. Giles' Street, Norwich, NOR 21 E

R. G. Pilch Ltd.

SPORTS SPECIALISTS

EQUIPMENT, CLOTHING and
FOOTWEAR, for EVERY
SPORT

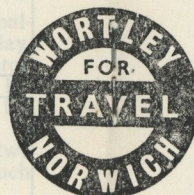
★ LISTS FREE

1 BRIGG STREET, NORWICH
Tel.: 28220

Norwich City (Yellow Shirts, Green Collar and Cuffs, Black Knickers)

- | | |
|-------------|---------------|
| (1) Kennon | (3) Worrell |
| (2) Kelly | (6) Mullett |
| (4) Burton | (5) Ashman |
| (7) Oliver | (8) Bryceland |
| (9) Allcock | (10) Hill |
| | (11) Punton |

Referee
Mr. G. McCabe
(Sheffield)



Linesmen

Mr. L. J. Forge
Red Flag
Mr. W. G. Buckley
Yellow Flag

- | | | | | |
|--------------|---------------|------------|---------------|------------|
| (11) Jardine | (10) McGuffie | (9) Davies | (8) McKechnie | (7) Walden |
| (6) Groves | (5) Pacey | (4) Morton | | |
| (3) Bramwell | (2) McNally | | | |
| (1) Baynham | | | | |

Luton Town (White Shirts, Black Knickers)

Kick-off 3.0 p.m.

SAVE

in

THE EAST ANGLIAN TRUSTEE SAVINGS BANK

ORDINARY DEPARTMENT

INTEREST 2½%

SPECIAL INVESTMENT DEPARTMENT

INTEREST 5%

Branches throughout East Anglia

Head Office: Castle Meadow, Norwich

GEORGE MIXER & CO., LTD.

Lead the Field

IN MODERN CONTROLLED ENVIRONMENT POULTRY
HOUSING FOR BROILERS, REARING, BATTERIES,
BREEDING AND COMMERCIAL LAYERS ON SLATS,
WIRE OR DEEP LITTER, DUTCH FARMS AND FARM
BUILDINGS.

CATFIELD, NORFOLK

PHONE: STALHAM 355

Enquiries Welcome

£150 CAN BE WON
EACH WEEK

IN THE

**EASTERN
FOOTBALL News**

IN OUR

'WHERE'S THE BALL?' CONTEST

SPORTS QUIZ

1. Although there are five First Division clubs in the last eight of the Football League Cup there's only one all-First Division tie. Between which clubs?
2. Can you name the winner, and jockey, of the Mackeson Gold Cup?
3. Who's the ex-Canary who hit a hat-trick for King's Lynn last week?
4. Which players scored twice for City Reserves last Saturday?
5. Which two batsmen hit centuries for New South Wales against M.C.C.?
6. Luton are known at the Hatters—but what's the name of their home ground?
7. Who is Chelsea's manager?
8. City have met Aston Villa, their next League Cup opponents, once before in a Cup-tie. When and with what result?
9. Oxford United, King's Lynn's F.A. Cup opponents today, were once known as —?
10. City enter the F.A. Cup fight on Monday. Who beat them in the competition last season, and at what stage?

(The Answers will be found on page 13)

"WHAT'S ON"

A.B.C.

Sunday, 25th November, for 7 days

Please see Local Press for Details

GAUMONT

Sunday, 25th November, for 7 days

"THE GIRL ON THE BOAT" (U)—Norman Wisdom.

"A HOLE IN THE HEAD" (U)—Frank Sinatra, Edward G. Robinson, Eleanor Parker, Carolyn Jones. Eastman colour. Cinemascope.

ODEON

Sunday, 25th November, for 7 days

"CORRIDORS OF BLOOD" (X)—Boris Karloff. Adults only.

"NIGHTS OF RASPUTIN" (X)—Edmund Purdom, Gianna Maria Canale.

THEATRE ROYAL

Sunday, 25th November, for 6 days

"KING SOLOMON'S MINES" (U)—Deborah Kerr, Stewart Granger.

"LONE STAR" (U)—Clark Gable, Ava Gardner.

Saturday, 1st December, for 1 day

ADAM FAITH

SECOND DIVISION

Aug.	18	Preston North End	A	2—2
	22	Cardiff City	H	0—0
	25	Plymouth Argyle	H	2—1
	29	Cardiff City	A	4—2
Sept.	1	Grimsby Town	A	2—0
	5	Huddersfield Town	H	2—3
	8	Bury	H	1—1
	12	Huddersfield Town	A	0—0
	15	Walsall	H	2—1
	22	Newcastle United	A	1—2
	29	Derby County	H	2—0
Oct.	5	Rotherham United	A	3—0
	13	Charlton Athletic	H	1—4
	20	Stoke City	A	0—3
	27	Sunderland	H	4—2
Nov.	3	(1) Leeds United	A	0—3
	10	Swansea Town	H	5—0
	17	Chelsea	A	0—2
	24	(2) Luton Town	H	
Dec.	1	Southampton	A	
	8	Scunthorpe United	H	
	15	Preston North End	H	
	22	Plymouth Argyle	A	
	26	Middlesbrough	A	
	29	Middlesbrough	H	
Jan.	5	(3)		
	12	Grimsby Town	H	
	19	Bury	A	
	26	(4)		
Feb.	2	Walsall	A	
	9	Newcastle United	H	
	16	(5) Derby County	A	
	23	Rotherham United	H	
Mar.	2	Charlton Athletic	A	
	9	(6) Stoke City	H	
	16	Sunderland	A	
	23	Leeds United	H	
	30	(S.F.) Swansea Town	A	
April	6	Chelsea	H	
	13	Luton Town	A	
	15	Portsmouth	A	
	16	Portsmouth	H	
	20	Southampton	H	
	26	Scunthorpe United	A	
May	4	(FINAL)		

FOOTBALL LEAGUE CUP

Sept.	26	Bolton Wanderers	H	4—0
Oct.	16	Carlisle United	A	1—1
	24	Carlisle United (Replay)	H	5—0
Nov.	14	Fulham	H	1—0
Dec.	3	Aston Villa	A	

FOOTBALL COMBINATION

Aug.	18	Cardiff City	H	1—1
	25	Mansfield Town	A	1—0
	27	Colchester United	A	0—3
Sept.	1	Plymouth Argyle	H	2—4
	8	Leicester City	A	4—2
	22	Northampton Town	H	0—3
	29			
Oct.	6	Ipswich Town	H	2—4
	13	Nottingham Forest	A	0—1
	20	Luton Town	H	3—1
	27	Peterborough United	A	1—4
Nov.	3	Bristol Rovers	H	1—3
	10	West Ham United	A	0—2
	17	Crystal Palace	H	6—1
	24	Tottenham Hotspur	A	
Dec.	1	Nottingham Forest	H	
	8	Ipswich Town	A	
	15	Cardiff City	A	
	22	Mansfield Town	H	
	26	Notts County	H	
	29			
Jan.	5			
	12	Plymouth Argyle	A	
	19	Leicester City	H	
	26	Arsenal	A	
Feb.	2	Notts County	A	
	9	Northampton Town	A	
	16	Colchester United	H	
	23	Luton Town	A	
Mar.	2	Peterborough United	H	
	9	Bristol Rovers	A	
	16	West Ham United	H	
	23	Crystal Palace	A	
	30	Tottenham Hotspur	H	
April	6			
	12	Arsenal	H	
	13	Shrewsbury Town	A	
	15	Shrewsbury Town	H	
	20			

Fixtures Copyright by the Football League Limited (Season 1962/63)

For QUALITY in your Shopping Basket
and DIVIDENDS in Your Purse

SHOP AT

33 GROCERY
BRANCHES



FOR EVERYTHING

28 BUTCHERY
BRANCHES

'DRIVURSELF' at lowest possible cost
—in a Car from **ROBINSONS**

RIVERSIDE ROAD, NORWICH

Call or Phone:

Norwich 27134 (3 lines)

for Full Details

—OF COURSE!

ALSO VANS AND UTILITIES

BUSH BUILDERS (Norwich) Ltd.

BUILDERS AND CONTRACTORS

ALL TYPES AND SIZES OF INDUSTRIAL DEVELOPMENT
PRIVATE HOUSING DEVELOPMENT
NORWICH AND COASTAL ESTATES

MILE CROSS LANE TELEPHONE 46326 NORWICH

FOOTBALL LEAGUE TABLE (SECOND DIVISION)

	P.	W.	D.	L.	F.	A.	Pts.
Chelsea	18	12	2	4	40	16	26
Bury	18	11	3	4	26	14	25
Sunderland	18	10	4	4	40	22	24
Stoke City	18	7	9	2	32	17	23
Huddersfield	17	8	7	2	30	16	23
Cardiff City	19	10	2	7	47	37	22
Leeds United	18	7	6	5	30	21	20
Newcastle United	19	8	4	7	41	29	20
Plymouth Argyle	18	7	6	5	35	27	20
NORWICH CITY	18	8	4	6	31	26	20
Portsmouth	18	6	7	5	27	28	19
Swansea Town	19	8	3	8	25	34	19
Rotherham United	18	8	2	8	27	34	18
Scunthorpe United	19	7	4	8	22	28	18
Middlesbrough	18	8	1	9	33	45	17
Southampton	18	6	3	9	30	34	15
Preston North End	18	4	5	9	21	33	13
Charlton Athletic	18	5	3	10	28	46	13
Walsall	18	5	3	10	23	45	13
Derby County	18	3	5	10	19	31	11
Luton Town	17	3	4	10	22	33	10
Grimsby Town	18	3	3	12	25	38	9

Martin's LAWN GRASS SEED

SUPER MIXTURE.—The finest mixture obtainable, containing only Cumberland Marsh Red Fescue, Chewings Fescue and Agrostis Tenuis Will make
NO. 1.—A mixture of the finer grasses, containing no rye grass 5/6
a carpet-like turf
NO. 3.—This is a mixture of the stronger-growing varieties, with a percentage 4/-
of rye grass, making a good serviceable turf
NO. 4.—A mixture which will give quick results and produce hard-wearing turf 3/-
NO. 6.—Quick-growing cheap mixture 2/6

MARTIN & SON, GOAT LANE, NORWICH.

Telephone 22784

Removals . . .

by

FITT BROS.

Limited

67-71 BER STREET, NORWICH

Telephone 20127

TRY

GAYWOOD CORNER

for PAINTS

IRONMONGERY - GENERAL HARDWARE
HARDBOARD PANELS - IRON GATES AND
LINEN POSTS - EXTENDING LADDERS
GARDEN TOOLS - FISHING RODS and REELS

55/57 DEREHAM ROAD, NOR 31J

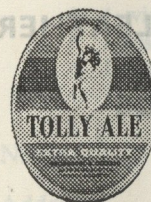
NORWICH 26358

LIST OF APPEARANCES AND GOAL SCORERS

	League and Cup Apps. Goals	Combination Apps. Goals		League and Cup Apps. Goals	Combination Apps. Goals
Allcock, T.	22 14	— —	Mannion, G.	11 1	5 —
Ashman, R.	13 —	3 —	McCrohan, R.	— —	4 —
Barnsley, G.	— —	4 —	McLean, G.	— —	3 2
D. Bealey	— —	1 —	Metcalf, C.	2 —	12 1
Bell, J.	20 3	2 —	Miller, A.	11 —	1 —
Bryceland, T.	10 2	— —	Mullett, J.	12 —	7 —
Burton, A.	22 4	— —	Oliver, J.	22 6	— —
Butler, B.	11 —	— —	Punton, W.	11 1	3 —
Conway, J.	5 2	8 4	Salisbury, G.	— —	12 7
Foster, M.	— —	8 —	Scott, R.	— —	6 —
Hill, J.	11 6	6 2	Staton, B.	18 —	3 —
M. Howlett	— —	4 —	Sutton, M.	— —	9 3
Jones, A.	— —	9 —	Thurlow, B.	— —	10 —
Kelly, P.	15 1	4 —	H. Watkins	— —	3 —
Kennon, N.	22 —	— —	Worrell, C.	4 —	10 —
Lloyd, R.	— —	6 2	Own Goal	— 2	— —

SPORTS QUIZ ANSWERS

1. Birmingham v. Manchester City
2. Fortria (P. Taaffe)
3. Bob Edwards
4. Conway, Lloyd
5. Simpson, O'Neill
6. Kenilworth Road
7. Tom Docherty
8. 1937-38. Villa won 3-2 at Carrow Road
9. Headington
10. Sheffield Utd.: fifth round



The Beers that Satisfy

Tolly Extra

THE PERFECT PALE ALE

Cobnut

AS SWEET AS A NUT



Distributors: BARWELL & SONS, NORWICH



Give a Hand in Civil Defence

Responsible men and women are needed in any one of the five Civil Defence Services

**HEADQUARTERS - WARDEN - RESCUE
AMBULANCE & FIRST AID and WELFARE**

Enquire now at:—

C.D. Headquarters, 23a Cattle Market Street,
Norwich, NOR 27 B

HALF-TIME SCOREBOARD

A	BIRMINGHAM LIVERPOOL	N	CRYSTAL PALACE MANSFIELD TOWN
B	BOLTON WANDERERS BLACKBURN ROVERS	O	MILLWALL COVENTRY CITY
C	FULHAM MANCHESTER CITY	P	SHREWSBURY TOWN TORQUAY UNITED
D	LEICESTER CITY BLACKPOOL	Q	SOUTHEND UTD. WATFORD
E	MANCHESTER UTD. ASTON VILLA	R	BURNLEY TOTTENHAM
F	SHEFFIELD WED. WEST HAM UNITED	S	EVERTON SHEFFIELD UTD.
G	WEST BROM. NOTTS FOREST	T	LEYTON ORIENT WOLVERHAMPTON
H	CARDIFF CITY STOKE CITY	U	DERBY COUNTY BURY
I	GRIMSBY TOWN CHELSEA	V	HUDDERSFIELD TOWN CHARLTON ATHLETIC
J	MIDDLESBROUGH ROTHERHAM UTD.	W	NEWCASTLE UTD. SCUNTHORPE UTD.
K	PLYMOUTH ARGYLE SWANSEA TOWN	X	PORTSMOUTH SUNDERLAND
L	PRESTON N.E. LEEDS UNITED	Y	ARSENAL IPSWICH TOWN
M	WALSALL SOUTHAMPTON	Z	TOTTENHAM RES. NORWICH CITY RES.

Norwich City Football Supporters' Club

Office: 50 KING STREET, NORWICH — 'Phone Norwich 27710

Club Huts: THE GROUND, CARROW ROAD, NORWICH

Bar and Tea Room — SOUTH STAND, CARROW ROAD, NORWICH

ORGANISED OUTINGS FUND RAISING SCHEMES

BLAZER BADGES TIES PENS

HANDBOOKS PROGRAMMES MEDALLIONS

GRAND FREE ACCIDENT INSURANCE SCHEMES

Norwich City Football Supporters' Social Club

104, THORPE ROAD, NORWICH — 'Phone 27342

OPEN EVERY EVENING — ENTERTAINMENT FOR ALL
WHIST DRIVES — LARGE BAR — EXCELLENT DANCE FLOOR

Norwich City Football Supporters' Association

Office: 50 KING STREET, NORWICH — 'Phone 27710

ORGANISERS OF THE NOW FAMOUS

CANARY POOL—THE TEN DIVIDEND POOL

WEEKLY MAGNIFICENT GIFT SCHEME — FREE INSURANCE

GIVES BEST VALUE AND QUICKEST RESULTS

DIVIDENDS DECLARED SATURDAYS

WINNINGS POSTED MONDAYS

GOOD COMMISSION AND BONUSES FOR COLLECTORS

APPLICATION FORM

The Secretary:

Norwich City Supporters' Club or

Norwich City Supporters' Association, 50, King Street, Norwich

* I wish to become a member of your Club (Membership 2/6 per year)

* I wish to become a member of your Pool (Minimum 1/- per week)

* I wish to become a collector for your Pool.

* (Delete whichever is not applicable)

Name

Address

(Block letters please)

Wilkinsons
OF NORWICH

**HIGH-CLASS LEATHER
and
TRAVEL GOODS**

SADDLERY

1 GUILDHALL HILL, NORWICH, NOR 14 E Tel. 20951

CARTER

BUILDER

R. G. CARTER LIMITED, DRAYTON, NORWICH

Tel. Drayton 355 (5 lines)

SHOP AT

**NORWICH
CO-OPERATIVE
SOCIETY LIMITED**

FOR QUALITY in your Shopping Basket!
DIVIDENDS in your Purse!
FOR EVERYTHING

33 GROCERY BRANCHES
29 BUTCHERY BRANCHES
IN CITY AND COUNTY

UNIVERSAL PROVIDERS