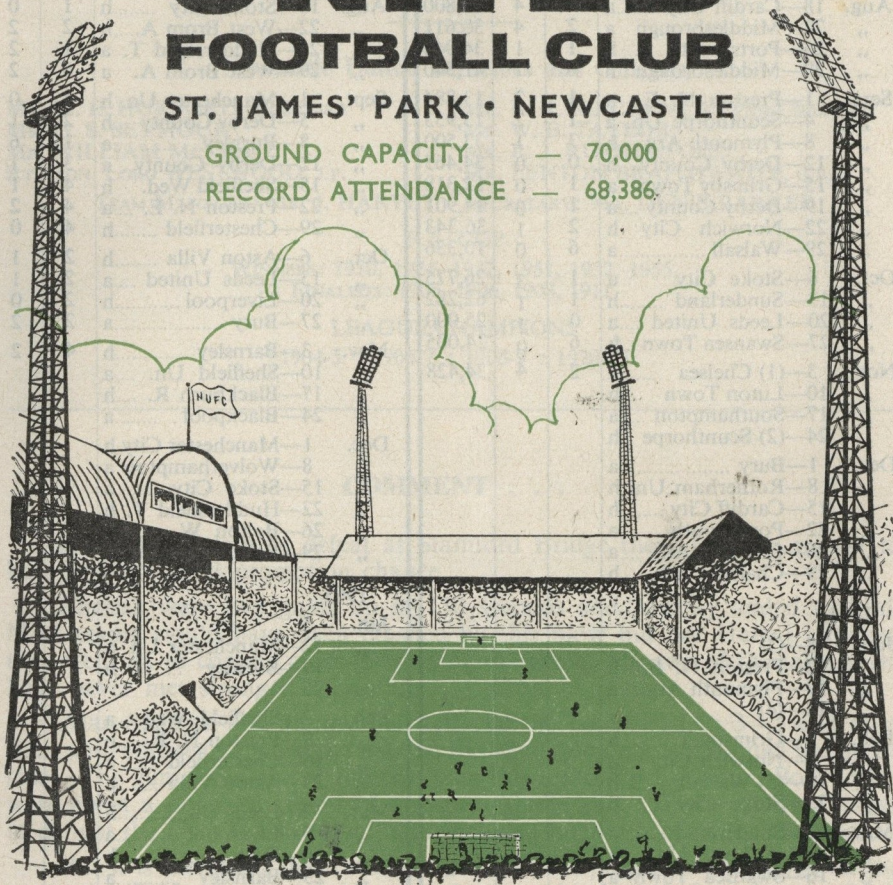


# NEWCASTLE UNITED FOOTBALL CLUB

ST. JAMES' PARK • NEWCASTLE

GROUND CAPACITY — 70,000

RECORD ATTENDANCE — 68,386.



*WE WELCOME TODAY-*

**LUTON TOWN**

Saturday, 10th Nov., 1962. Kick-off 3-0 p.m.

---

**OFFICIAL PROGRAMME**

---





# Fixtures for Season 1962-63

FOOTBALL LEAGUE					CENTRAL LEAGUE					
1962		F	A	Atten.	1962		F	A		
Aug.	18—Cardiff City .....	a	4	4	26,800	Aug.	18—Stoke City .....	h	1	0
"	22—Middlesbrough .....	a	2	4	30,611	"	22—West Brom A.....	h	2	2
"	25—Portsmouth .....	h	1	1	34,040	"	25—Huddersfield T. ....	a	1	2
"	29—Middlesbrough .....	h	6	1	41,540	"	29—West Brom A. ....	a	0	2
Sept.	1—Preston N. E. ....	a	1	2	13,884	Sept.	1—Manchester Un. ....	h	4	0
"	4—Scunthorpe Un. ....	a	1	2	13,953	"	5—Derby County .....	h	2	1
"	8—Plymouth Arg. ....	h	3	1	33,500	"	8—Burnley .....	a	1	6
"	12—Derby County.....	h	0	0	34,465	"	12—Derby County.....	a	3	1
"	15—Grimsby Town.....	a	1	0	12,318	"	15—Sheffield Wed. ....	h	4	1
"	19—Derby County .....	a	1	0	14,901	"	22—Preston N. E. ....	a	4	2
"	22—Norwich City .....	h	2	1	36,343	"	29—Chesterfield .....	h	4	0
"	29—Walsall .....	a	6	0	10,336	Oct.	6—Aston Villa .....	h	2	1
Oct.	6—Stoke City .....	a	1	3	26,775	"	13—Leeds United .....	a	2	1
"	13—Sunderland .....	h	1	1	62,282	"	20—Liverpool .....	h	2	0
"	20—Leeds United .....	a	0	1	25,000	"	27—Bury .....	a	2	2
"	27—Swansea Town.....	h	6	0	24,005	Nov.	3—Barnsley .....	h	4	2
Nov.	3—(1) Chelsea .....	a	2	4	34,428	"	10—Sheffield Un. ....	a		
"	10—Luton Town .....	h				"	17—Blackburn R. ....	h		
"	17—Southampton .....	a				"	24—Blackpool .....	a		
"	24—(2) Scunthorpe .....	h				Dec.	1—Manchester City .....	h		
Dec.	1—Bury .....	a				"	8—Wolverhampton .....	a		
"	8—Rotherham Un. ....	h				"	15—Stoke City .....	a		
"	15—Cardiff City .....	h				"	22—Huddersfield T. ....	h		
"	22—Portsmouth .....	a				"	26—Bolton W. ....	h		
"	26—Charlton Ath. ....	a				"	29—Bolton W. ....	a		
"	29—Charlton Ath. ....	h								
1963					1963					
Jan.	5—(3)				Jan.	5				
"	12—Preston N. E. ....	h			"	12—Manchester Un. ....	a			
"	19—Plymouth Arg.....	a			"	19—Burnley .....	h			
"	26—(4)				"	26				
Feb.	2—Grimsby T. ....	h			Feb.	2—Sheffield Wed.....	a			
"	9—Norwich City .....	a			"	9—Preston N. E. ....	h			
"	16—(5) Walsall .....	h			"	16—Chesterfield .....	a			
"	23—Stoke City .....	h			"	23—Aston Villa .....	a			
Mar.	2—Sunderland .....	a			Mar.	2—Leeds Un.....	h			
"	9—(6) Leeds Un. ....	h			"	9—Liverpool .....	a			
"	16—Swansea Town .....	a			"	16—Bury .....	h			
"	23—Chelsea .....	h			"	23—Barnsley .....	a			
"	30—(S.F.) Luton .....	a			"	30—Sheffield Un. ....	h			
April	6—Southampton .....	h			April	3—Everton .....	h			
"	12—Huddersfield T. ....	h			"	6—Blackburn R. ....	a			
"	16—Huddersfield T. ....	a			"	10—Everton .....	a			
"	20—Bury .....	h			"	13—Blackpool .....	h			
"	27—Rotherham Un. ....	a			"	20—Manchester City .....	a			
"	27—Rotherham Un. ....	h			"	27—Wolverhampton .....	h			
May	4—(Final)				May	4				

These fixtures are the copyright of the Football League Ltd., and are printed by their permission under Licence No. 2. They must not be reproduced in whole or in part without permission from the Football League Ltd.

## NEWCASTLE UNITED FOOTBALL CLUB

St. James' Park, Newcastle upon Tyne

Telephone 2-1459 and 2-7028

### Newcastle United Directors and Officials

MR. W. E. HURFORD, Chairman

MR. R. R. MACKENZIE, Vice-Chairman

MR. G. S. SEYMOUR

MR. W. B. TAYLOR

MR. WILLIAM McKEAG

MR. R. J. RUTHERFORD

RT. HON. LORD WESTWOOD, J.P.

MR. FENTON BRAITHWAITE, O.B.E.

TEAM MANAGER: MR. J. HARVEY

SECRETARY: MR. DENIS BARKER

### F.A. CUP

WINNERS: 1910, 1924, 1932, 1951, 1952, 1955.

FINALISTS: 1905, 1906, 1908, 1911.

### LEAGUE CHAMPIONS

1904-5 : 1906-7 : 1908-9 : 1926-27

### COMMENT . . .

Although sustaining defeat at Stamford Bridge there is every reason to be optimistic about promotion chance

Chelsea were two goals up in 130 seconds and Murray added a third. Most teams would have been crushed by this blow but not United. Indeed they went on to coming close to winning the game. The top of the table team have never met stronger opposition.

Alan Suddick and Jimmy Fell reduced the home lead to 3—2 and after that, until Chelsea clinched the issue in the 82nd minute it was United the better side. The game was one of the best seen this season in London. Both teams were given a deserved round of applause at the end. It was vintage soccer to delight the near 35,000 crowd, that included hundreds of exiled Geordies.

But it is the result that counts and the defeat pegged United back on the promotion field. But it should not be long on this form before they are back on the winning trail, and it should be at Gallowgate this afternoon against Luton Town.

The "Hatters" are at the foot of the League and they have only won a couple of their 15 games. But United must not rely upon past records and should set to establish a clear cut victory from the off. The attack should certainly hit the goal standard against a very suspect Luton defence.

Only four points divide United from leaders Chelsea so the championship and promotion race is still wide open. Go to it then, United, and let's have a great home win to celebrate.



## Spotlight on Luton Town

### OUR DIVISION II OPPONENTS TODAY

Founded in 1885 and the first club in the south to employ professional footballers. Elected 1897 to Division Two. Popularly known as the Hatters.

League career: Division Two 1897-1900, when failed to be re-elected. Southern League 1900-15; 1919-20. Division Three 1920-21. Division Two 1937-39; 1946; 1955. Division One 1955-60. Division Two 1960-62.

Record attendance: 30,069.

Best seasons: when runners-up in the Second Division in 1954-55, and when Champions of the Division Three (South) 1936-37.

Best scoring season: 1936-37, 103 goals.

Highest score v. Bristol Rovers 12-0.

Most goals in match: 10 by J. Payne, 1935-36; League record.

Notable transfers include Bookman from Bradford City, J. Pye from Wolves, S. Owen from Birmingham City, G. Cummins from Everton, A. Brown from Blackpool, Billy Bingham from Sunderland.

Internationals: Payne, Simms, Bookman, Mathieson, Elvey, Baynham, Owen, Streten, Brown, Cullen, Bingham, Brennan, Cummins, Morton, Pacey, to name a few.

Footballer of the Year, 1958-59: S. Owen.

Cup finalists 1959. Team: Baynham; McNally, Hawkes; Groves, Owen, Pacey; Bingham, Brown, Morton, Cummins, Gregory.

## Newcastle United Football Club Development Fund

It is with considerable pleasure I am able to announce a new milestone in the history of Newcastle United.

The Directors have inaugurated a Development Fund Scheme to improve the amenities for Spectators and provide at St. James Park the finest possible football entertainment.

Monies for this Fund will be raised by a Lottery registered under the Small Lotteries and Gaming Act, 1956.

PRIZES of £15, £10 and £5 will be offered daily from Monday to Friday, and, £30, £20 and £10 on Saturdays, and, in addition, there will be £100 in I.O.U.'s of £1 each week. It is hoped the scheme will provide daily interest to all supporters. The winning numbers of the daily draw will be published in the local press and the first draw will take place on Monday, 3rd December.

Ticket sales will commence on Sat., 24th Nov., make sure you get yours.

As Promoter, may I appeal to all who will offer their services as Collectors whether they can sell 6 tickets or 600, to come along and meet me at my office behind the clubs Gymnasium which will be open in the evening on Monday and Tuesday, between 6 p.m. and 8 p.m. Wednesday, Thursday and Friday between 10 a.m. and 12 noon, and Saturday 11 a.m. to 5-30 p.m. each week.

JIM B. MASON, Organiser.

## Half-time Scoreboard

### NUMBER ONE

### NUMBER TWO

Arsenal .....  
Sheffield United .....

A

Birmingham .....  
Nottingham Forest .....

B

Bolton Wanderers .....  
Manchester City .....

C

Burnley .....  
Wolverhampton W. ....

D

Everton .....  
Blackpool .....

E

Fulham .....  
Tottenham Hotspur .....

F

Leicester City .....  
West Ham United .....

G

Leyton Orient .....  
Ipswich Town .....

H

Manchester United .....  
Liverpool .....

J

Sheffield Wednesday .....  
Aston Villa .....

K

West Brom. Albion .....  
Blackburn Rovers .....

L

Huddersfield .....  
Bury .....

M

Middlesbrough .....  
Scunthorpe United .....

N

Preston North End .....  
Stoke City .....

P

Cardiff City .....  
Rotherham .....

Derby County .....  
Southampton .....

Grimsby Town .....  
Leeds United .....

Norwich City .....  
Swansea .....

Plymouth Argyle .....  
Sunderland .....

Portsmouth .....  
Charlton Athletic .....

Walsall .....  
Chelsea .....

Southend United .....  
Carlisle United .....

Doncaster Rovers .....  
Hartlepool United .....

Mansfield Town .....  
Darlington .....

Rochdale .....  
Oxford United .....

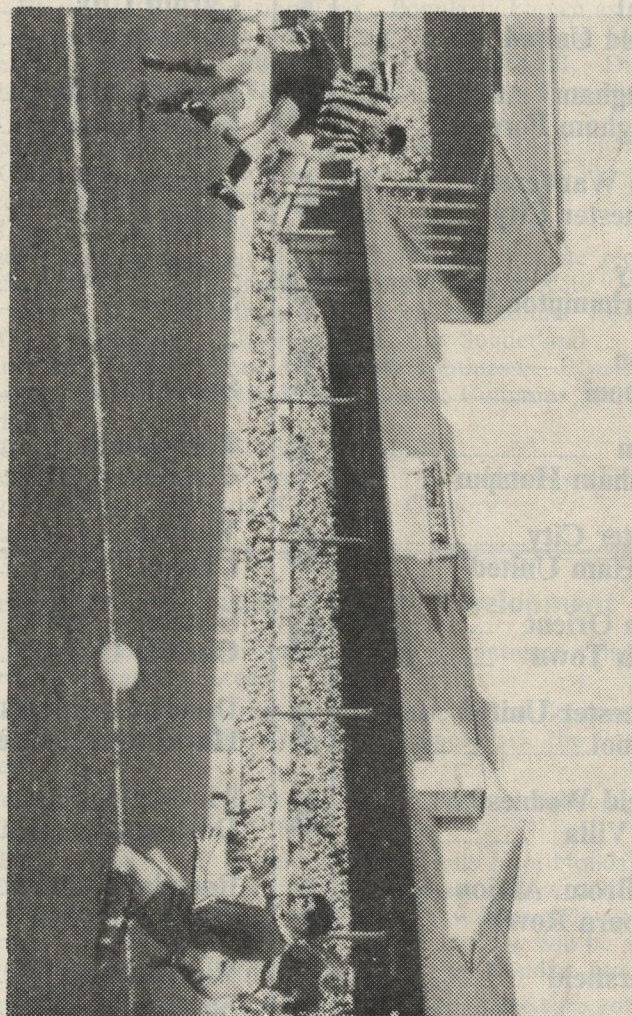
Workington .....  
Southport .....

York City .....  
Tranmere Rovers .....

Sheffield Utd. Res. ....  
Newcastle Utd. Res. ....



Alan Suddick scores United's first goal against Chelsea.



THE SPORTS CENTRE  
OF THE NORTH

**Stan Seymour**

(N/c.) Ltd. Phone 27732

*For all Sports Requisites:*

**FOOTBALL RUGBY  
GOLF TENNIS  
CRICKET Etc.**

**1 Market Street  
Newcastle upon Tyne**

TENNIS REPAIRS AND RE-STRINGS  
Executed on the premises—24 hour service

**FOR THE BEST  
IN LUXURY  
TRAVEL . . .**

**Hire Your Coach From**

**R. ARMSTRONG**

Motor Coach Proprietor

**11 FENKLE STREET**  
(OFF CLAYTON STREET)

**NEWCASTLE-on-TYNE**

Telephone 23918-24772

29, 33, 39 & 41 SEATER COACHES AVAILABLE

## Professional Playing Strength

### GOALKEEPERS

	<i>Birthplace</i>	<i>Previous Club</i>
Herbert Garrow	Elgin	Fochabers
David Hollins	Bangor	Brighton
Stewart Mitchell	Glasgow	Benburb

### FULL BACKS

Joseph Butler	Newcastle	Nursery
Colin Clish	H-le-Hole	Nursery
Frank Clark	Highfield	Crook Town
Richard Keith	Belfast	Linfield
Colin Lambton	Newcastle	Chester M.
Wm. McKinney	Newcastle	Wallsend
Alf. McMichael	Belfast	Linfield
David Craig	Belfast	Nursery

### HALF BACKS

George Dalton	Newcastle	Nursery
John McGrath	Manchester	Bury
Duncan Neale	Brighton	Ilford
Wm. Thompson	Bedlington	Nursery
Brian Wright	Sunderland	Nursery
Gerry Morton	Newcastle	North Shields

	<i>Birthplace</i>	<i>Previous Club</i>
David Turner	Retford	Nursery
Clive Chapman	Belford	Nursery
John Markie	Boness	Nursery
Jim Iley	Sheffield	Nott'm. For.

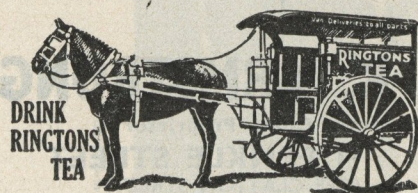
### FORWARDS

Kenneth Hale	Blyth	Nursery
Gordon Hughes	Washington	Tow Law
Liam Tuohy	Dublin	Shamrock R.
Charles Woods	Whitehaven	Nursery
Jimmy Kerray	Stirling	Hudders'd
Barrie Thomas	Measham	Scunthorpe
Billy Day	Middlesbro	Middlesbro
Jimmy Fell	Grimsby	Everton
Dave Hilley	Glasgow	Third Lan.
Alan Suddick	Ches.-le-St.	Nursery
Ray Lodge	Newcastle	Workington
Les O'Neill	Shankhouse	Blyth S.
Bobby Moncur	Perth	Nursery
Gerry Donaghue	Sunderland	—
Charles Younger	Sunderland	—
George Watkin	Chopwell	Nursery



Beer—the best long drink in the world, and  
**Nimmo's** tops the lot

Brewers of Fine Ales since 1826 • **J. NIMMO AND SON LTD**



ADVERTISING space in this Programme is available — all rates and particulars from the Printers of this Programme:—

**T. & G. ALLAN (N/c.) LTD.**  
 291 Westgate Road, Newcastle, 4

### NEXT MATCHES AT ST. JAMES' PARK

Central League

Kick-off 3-0 p.m.

**Newcastle Un. Res. v Blackburn Rov. Res.**

Saturday, 17th November, 1962

Football League

Kick-off 3-0 p.m.

**Newcastle United v Scunthorpe United**

Saturday, 24th November, 1962

## CITY School of Motoring

EXPERT TUITION BY  
**R.A.C. AND M.S.A.**  
 INSTRUCTORS

PAY AS YOU LEARN



Our aim is to get you through your Test First Time with the smallest outlay.

Write, call or phone for particulars.

11a Haymarket, Newcastle upon Tyne. Tel. 24102

ELECTRO PLATING

ESTABLISHED OVER 80 YEARS

PHONE 24281

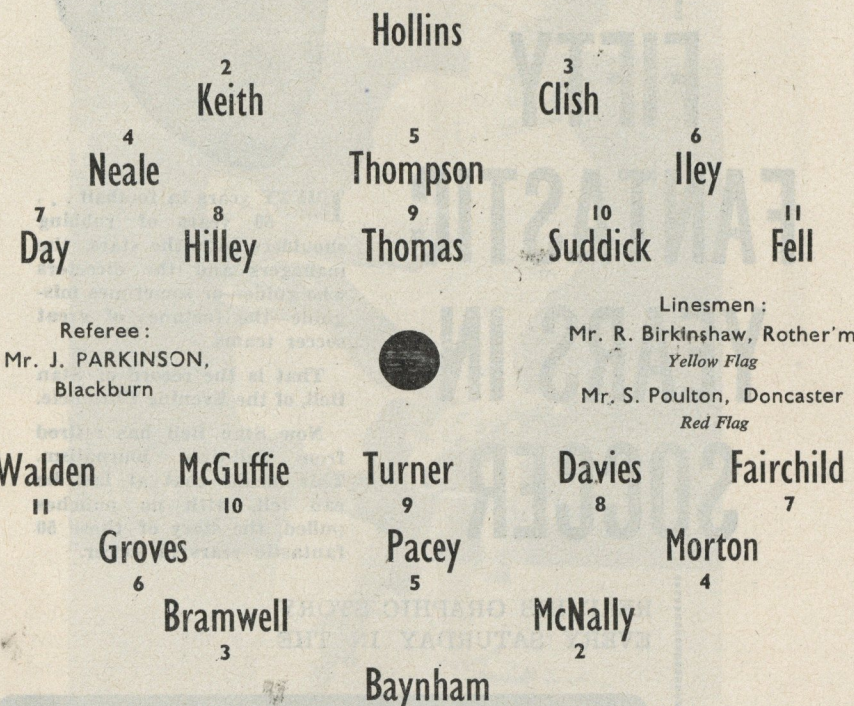
Model Railways  
 Model Roadways  
 Farms & Zoos  
 Forts & Garages

**Boydell's**  
 OF PERCY STREET  
 for  
**Cycles and Tricycles**  
 SERVICE AGENTS

Tri-ang Toys  
 Meccano - Lego  
 Dinky - Corgi  
 Dolls & Prams

### Newcastle United

Colours—Shirts: Black and White Stripes    Shorts: Black



Colours—Shirts: White    Shorts: White

### Luton Town

Any alterations to these teams will be announced over the loudspeaker  
 The Band of the 9th Durham Cadet Bn. The Parachute Reg. by kind permission of Major W. B. Greenfield, M.B.E.

THE "BEST BITTER" THAT TASTES BETTER  
**Newcastle**  
**"EXHIBITION"**  
 SCOTTISH & NEWCASTLE  
 BREWERIES LIMITED





---

by Stan Bell



# FIFTY FANTASTIC YEARS IN SOCCER

**F**IFTY years in football... 50 years of rubbing shoulders with the stars, the managers and the directors who guide—or sometimes misguide—the fortunes of great soccer teams.

That is the record of Stan Bell, of the Evening Chronicle.

Now Stan Bell has retired from full-time journalism. This means that at last he can tell, with no punches pulled, the story of those 50 fantastic years in soccer.

READ HIS GRAPHIC STORY  
EVERY SATURDAY IN THE

# FOOTBALL

## EVENING CHRONICLE

---

Gordon Turner







COLIN CLISH



ALAN SUDDICK

Colin Clish and Alan Suddick, two of United's first team players, who developed through the Central League Team via the Nursery. Both playing well in the second division team, Suddick has caught the eye of the selectors, having been chosen for the Under 23 England team.

The Central League team are now at the head of the table and manager Joe Harvey must be pleased with reserve talent. Gates are increasing week by week at these matches and supporters are well satisfied with the brand of football they are turning out.

## NORTHERN INTERMEDIATE LEAGUE

Cup Match

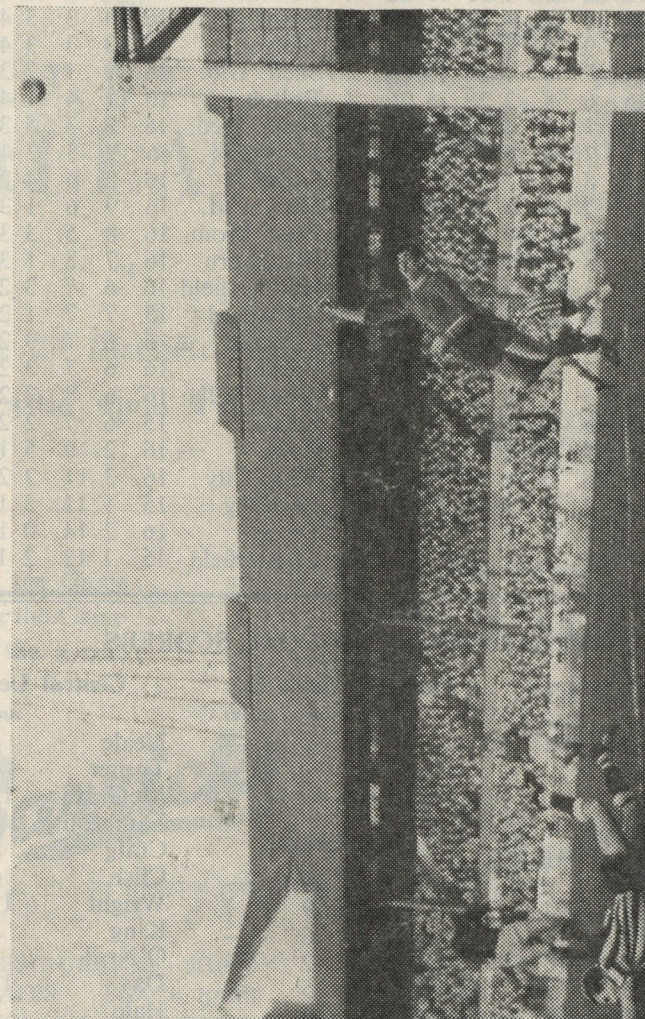
2nd Round

1st Leg

**v. LEEDS**

Wednesday, November 21st, 1962

KICK-OFF 7-30 p.m.



Barrie Thomas (on ground) drove inches over the bar in the match at Stamford Bridge.



Compiled up to and including the 3rd November, 1962

### League Division II

	P.	W.	D.	L.	F.	A.	P.
Chelsea	16	10	2	4	33	15	22
<b>Sunderland</b>	<b>16</b>	<b>9</b>	<b>3</b>	<b>4</b>	<b>37</b>	<b>20</b>	<b>21</b>
Bury	16	9	3	4	24	14	21
Huddersfield	14	7	6	1	26	13	20
Stoke	16	6	8	2	28	15	20
Plymouth	16	7	5	4	33	20	19
<b>Newcastle</b>	<b>17</b>	<b>7</b>	<b>4</b>	<b>6</b>	<b>38</b>	<b>25</b>	<b>18</b>
Cardiff	17	8	2	7	39	34	18
Norwich	16	7	4	5	26	24	18
Portsmouth	16	6	6	4	23	22	18
Rotherham	16	8	2	6	26	28	18
Leeds	16	6	5	5	23	19	17
Swansea	17	7	3	7	24	29	17
Scunthorpe	16	6	3	7	15	21	15
<b>Middlesbro</b>	<b>16</b>	<b>7</b>	<b>1</b>	<b>8</b>	<b>29</b>	<b>41</b>	<b>15</b>
S'thampton	16	5	3	8	26	31	15
Walsall	16	5	3	8	19	36	13
Preston	16	4	4	8	19	30	12
Charlton	16	5	2	9	23	39	12
Derby	16	2	5	9	15	28	9
Luton	15	2	4	9	17	27	8
Grimsby	16	3	2	11	24	36	8

### Central League

	P.	W.	L.	D.	F.	A.	P.
<b>Newcastle</b>	<b>16</b>	<b>11</b>	<b>3</b>	<b>2</b>	<b>38</b>	<b>23</b>	<b>24</b>
Burnley	16	10	3	3	43	11	23
Wolves	16	10	3	3	44	17	23
Sheff. Utd.	16	8	1	7	38	18	23
Bolton	16	11	4	1	43	25	23
Sheff. Wed.	16	8	3	5	34	21	21
Liverpool	16	9	5	2	43	24	20
Stoke	16	8	4	4	23	24	20
Man. Utd.	16	9	6	1	34	26	19
West Brom.	16	8	5	3	36	31	19
Blackburn	16	7	8	1	33	28	15
Huddersfield	16	6	7	3	29	27	15
Blackpool	15	7	7	1	26	26	15
Everton	16	6	7	3	29	31	15
Preston	16	6	7	3	24	27	15
Aston Villa	16	6	8	2	26	26	14
Leeds	15	6	7	2	21	28	14
Bury	16	2	9	5	19	33	9
Man. City	16	3	11	2	20	50	8
Barnsley	15	1	11	3	17	52	5
Derby	16	2	14	0	19	56	4
Chesterfield	15	1	12	2	12	46	4

### APPEARANCES AND GOAL SCORERS

#### League Division II

	App's.	Goals
Hollins	17	—
Keith	14	—
McMichael	11	—
Wright	5	—
Thompson	15	—
Dalton	6	—
Suddick	11	4
Hilley	17	3
Thomas	16	10
Kerray	15	7
Fell	17	9
McKinney	3	—
Hale	7	3
Ferguson	2	—
Neale	12	—
McGrath	2	—
Iley	11	—

#### League Division II

	App's.	Goals
Day	2	—
Clish	4	—
Own Goals	—	2
<b>Central League</b>		
Mitchell	14	—
McKinney	9	1
Ferguson	6	—
Chapman	2	—
Markie	5	—
Moncur	3	—
Hughes	1	—
Woods	15	6
Watkin	12	10
Donaghue	6	1
Tuohy	15	4
Kerray	1	1

#### Central League

	App's.	Goals
Neale	4	1
Turner	6	1
McGrath	12	—
Lambton	2	—
Craig	5	—
Clish	6	—
Wright	11	2
King	3	1
O'Neill	1	1
Day	13	2
Hale	7	5
Suddick	5	2
Dalton	7	—
Garrow	2	—
Butler	3	—
Clark	1	—

When in Town . . .

visit

T. & G.  
**ALLAN**

at

18 & 20 Blackett Street  
Newcastle upon Tyne, 1

Before the Game . . .

During the Game . . .

After the Game . . .

**Barricks**

are always at your service

RESTAURANTS - SHOPS  
CAFES - SNACK BARS  
THROUGHOUT THE NORTH-EAST

Head Office:  
Ponteland Road,  
Cowgate, Newcastle upon Tyne, 5

### FOOTBALL EXCURSION

## SOUTHAMPTON

FOR UNITED'S MATCH

Friday Night, 16th November

Newcastle ..... 11-23 p.m. 80/-  
Sunderland ..... 10-52 p.m. 80/-  
Durham ..... 11-50 p.m. 76/6

Return from Kings Cross Saturday  
11-50 p.m.

Passengers travel between Waterloo and Southampton by any suitable ordinary service, crossing London at own expense.

BRITISH RAILWAYS

For the finest

## Car & Motor Cycle Service

IN THE NORTH

**St. Andrew's Motors**  
LIMITED

Efficient Maintenance & After-Sales Service

Leazes Lane and Leazes Park Road  
Newcastle Tel. 28333

SIMPSON STREET, BLYTH Telephone 3131  
51 PARKGATE, DARLINGTON Telephone 4272



---

**To Factories, Works, Shipyards  
Builders' Merchants, Plumbers, etc.**

# Scrap Urgently Wanted

**BRASS · COPPER · LEAD · ALUMINIUM  
ZINC · CAR BATTERIES**

*We Specialise in Collecting*  
**ALL CLASSES OF SCRAP METAL**  
*including*

**CAST IRON BORINGS  
ALL KINDS OF HEAVY SCRAP  
LIGHT SCRAP CUTTINGS  
CRUSHED AND BUSHY TURNINGS**

**Use Our Transport and Labour—Save Yours**

**20-Ton Weigh Bridge on Premises**

**QUICK TURN ROUND  
SPOT CASH**

**W.F.&J.R.SHEPHERD Ltd.  
SCRAP METAL <sup>IRON & STEEL</sup> MERCHANTS**

**BREWERY YARD (off BYKER BANK) and QUALITY ROW  
NEWCASTLE UPON TYNE**

**Open Saturday until 12.30**

**Private Sidings ST. PETER'S STATION, Walker.**

**Telephone 65 6210**

**Telephone 655619**