

Middlesbrough Football Club

OFFICIAL PROGRAMME

Price: Fourpence

**EVENING
GAZETTE**

**This programme
incorporates
the EVENING
GAZETTE
KEY
CARD**

See the Goals at Ayresome Park
and Get your Gallons from



The BORO SERVICE STATION

(W. V. MORGAN & SONS)

Ayresome Street, Middlesbrough

Telephone 88944

FOR ALL YOUR MOTORING NEEDS

REPAIRS, OVERHAULS, TYRES, BATTERIES, ACCESSORIES
REGENT PETROL AND OIL

Together with

THE FINEST LUBRICATION SERVICE ON TEES-SIDE

ANY MAKE OF NEW OR USED CAR SUPPLIED

HODGSON & DOWNS

LIMITED

ESTABLISHED 1876

Wine & Spirit Merchants

Our Extensive Cellars will serve all your requirements

* We deliver promptly to all districts *

Price list on application

- 42 HIGH STREET, Stockton-on-Tees Phone 63232/3
32 STOKESLEY RD., Marton, Middlesbrough Phone 55708
105 NEWPORT ROAD, Middlesbrough Phone 3245/6
42 SUSSEX STREET, Middlesbrough Phone 3245/6

MIDDLESBROUGH F.C.

Directors: Mr. J. E. Thomas (chairman), Mr. H. E. Thomas (vice-chairman),
Messrs. R. C. Rand, H. French, G. B. Winney, J. G. Hatfield, G. B. Wood,
W. S. Gibson.

Secretary: Mr. T. H. C. Green.

Manager: Mr. R. Dennison.

Today's visitors—LUTON TOWN Home win due!

By CLIFF MITCHELL

ON CURRENT FORM; as far as the respective positions in the Second Division table are concerned—in just about every way you look at this afternoon's game at Ayresome Park, Middlesbrough should win handsomely.

And that is precisely where the danger lies! Borough so often reserve their best form for the top teams and allow their standard to drop against the strugglers. We must hope that today brings the exception to that unhappy "rule" and that the lads in red come through in style.

A good win is due. Borough were held at home a fortnight ago, when Swansea Town shared the points here in a 2-2 draw, and last Saturday the Tees-siders went down 3-2 to Chelsea in a thrilling match at Stamford Bridge.

* * *

ONE POINT from the last two matches—and knocked out of the Football League Cup into the bargain! The Cup dismissal matters little, but if hopes of a move up the League table to a challenging position are to be sustained no more home points will have to be dropped.

In London last week, Middlesbrough put up a gallant fight. They found themselves two goals down early in the game, but hit

back to such effect that the half-time score was 2-2. After having recovered so well, it looked as though Chelsea's unbeaten home record was in jeopardy—but it didn't quite work out that way.

Tambling, a most dangerous inside-right, scored shortly after half-time, and the "Pensioners" held out against strong Middlesbrough pressure in the closing stages. An entertaining match—but no reward for Middlesbrough!

* * *

IF BOROUGH can retain the fighting spirit and determination that gave promotion - chasing Chelsea such a fright, it should surely be sufficient to account for lowly Luton.

The "Hatters," so recently in the First Division—and in the Final of the FA Cup at Wembley—have hit lean times of late and their supporters are already fearing that perhaps Third Division football might be on view at Kenilworth-road next season.

It is, of course, far too early to talk about relegation—or of promotion, for that matter. Luton Town have some fine footballers on their books, and they are capable of emerging from their present bad patch.

We sincerely hope they do just that. But after today's match!

Fixtures for the present season

League Team

1962		
Aug. 18—Sunderland	1—3 A	
22—Newcastle Utd.	4—2 H	
25—Huddersfield T.	0—5 H	
29—Newcastle Utd.	1—6 A	
Sept. 1—Cardiff City	2—1 A	
4—Walsall	0—1 A	
7—Portsmouth	4—2 H	
12—Walsall	2—3 H	
15—Preston North End	1—0 A	
22—Plymouth Argyle	3—0 H	
29—Grimsby Town	4—3 A	
Oct. 6—Leeds United	3—2 A	
13—Swansea Town	2—2 H	
20—Chelsea	2—3 A	
27—Luton Town	H	
Nov. 3—(1) Southampton	A	
10—Scunthorpe United	H	
17—Bury	A	
24—(2) Rotherham United	H	
Dec. 1—Charlton Athletic	A	
8—Stoke City	H	
15—Sunderland	H	
22—Huddersfield Town	A	
26—Norwich City	H	
29—Norwich City	A	

Reserve Team

1962		
Aug. 18—Lincoln	3—4 H	
20—Gateshead	1—0 A	
25—Hartlepoons Utd.	4—2 A	
Sept. 1—Rotherham Utd.	1—3 H	
8—Doncaster	1—2 A	
15—Bradford	3—3 H	
22—Grimsby Town	2—0 A	
29—Grimsby Town	8—1 H	
Oct. 6—Sunderland	7—1 H	
13—Halifax Town	0—4 A	
20—Hull City	2—0 H	
27—Bradford City	A	
Nov. 3—Gateshead	H	
10—Sunderland	A	
17—Bradford City	H	

1963		
Jan. 5—FA Cup (Third Round)		
12—Cardiff City	H	
19—Portsmouth	A	
26—(4)		
Feb. 2—Preston North End	H	
9—Plymouth Argyle	A	
16—(5) Grimsby Town	H	
23—Leeds United	H	
Mar. 2—Swansea Town	A	
9—(6) Chelsea	H	
16—Luton Town	A	
23—Southampton	H	
29—Scunthorpe United	A	
30—(Semi-final)		
April 6—Bury	H	
12—Derby County	H	
13—Rotherham United	A	
15—Derby County	A	
20—Charlton Athletic	H	
27—Stoke City	A	
May 4—(Final)		

Dec. 1—Scunthorpe United	H	
8—Oldham	A	
15—Lincoln City	A	
22—Hartlepoons United	H	
29—York City	A	
1963		
Jan. 19—Doncaster	H	
26—Halifax Town	H	
Feb. 2—Bradford	A	
9—Sunderland	H	
16—Hull City	A	
23—Hartlepoons United	A	
Mar. 16—Stockport County	H	
23—Hull City	A	
30—Oldham	H	
Apr. 13—York City	H	
20—Rotherham United	A	
27—Stockport County	A	
May 4—(Final)		

FOOTBALL LEAGUE TABLES

League placings up to and including games played Saturday, October 20.

LEAGUE—DIVISION I

	P	W	D	L	F	A	Pts
Everton	13	9	2	2	28	14	20
Wolves	13	8	3	2	31	18	19
Burnley	13	8	3	2	31	22	19
Spurs	13	8	2	3	43	23	18
L'c'ster	14	7	4	3	28	17	18
Aston V.	14	8	2	4	26	21	18
Notts F.	13	7	3	3	28	23	17
Sheff. U.	14	6	4	4	24	22	16
Sheff. W.	14	6	4	4	28	26	16
W. Brom	14	5	3	6	25	25	13
Blackp'l	14	4	5	5	17	22	13
W. Ham	13	4	4	5	24	22	12
Blckbrn	14	5	2	7	23	29	12
Man. C.	14	4	4	6	21	36	12
Liverp'l	13	4	3	6	18	20	11
Ipswich	14	2	6	6	21	23	10
Arsenal	13	3	4	6	20	25	10
Bolton	14	4	2	8	21	27	10
Leyton	14	4	1	9	16	23	9
Fulham	14	3	3	8	14	27	9
Man. U.	13	3	2	8	17	25	8
B'ham	13	2	4	7	15	29	8

LEAGUE—DIVISION II

	P	W	D	L	F	A	Pts
H'field	13	7	6	0	24	10	20
S'land	14	8	3	3	29	14	19
Bury	14	8	3	3	22	12	19
Chelsea	14	8	2	4	26	12	18
Stoke	14	6	6	2	25	12	18
Plym'th	14	6	4	4	25	17	16
N'castle	15	6	4	5	30	21	16
Norwich	14	6	4	4	22	19	16
R'ham	14	8	0	6	24	26	16
Ptsmth	14	5	5	4	21	21	15
Schpe	15	6	3	6	15	17	15
Sw'sea	15	6	3	6	21	23	15
M'bro	14	7	1	6	29	33	15
Leeds	14	5	4	5	19	18	14
Cardiff	14	6	2	6	30	30	14
Walsall	14	5	2	7	18	32	12
Preston	14	4	3	7	16	26	11
Charltn	14	4	2	8	20	32	10
S'thptn	13	3	3	7	14	24	9
Grimsby	14	3	1	10	21	29	7
Derby	14	1	5	8	12	24	7
Luton	13	1	4	8	14	25	6

LEAGUE—DIVISION III

	P	W	D	L	F	A	Pts
Nthptn	16	9	5	2	44	20	23
Peterbro'	18	9	5	4	40	29	23
Notts C.	17	8	5	4	22	23	21
Swindon	17	6	7	4	32	21	19
Watford	18	9	1	8	40	34	19
Wrex'h'm	16	9	1	6	34	31	19
Bris. C.	16	6	6	4	34	26	18
Sh'bury	18	6	6	6	44	36	18
B'mouth	17	5	8	4	21	20	18
S'thend	17	9	0	8	30	34	18
C'c'ster	18	6	6	6	30	36	18
P. Vale	18	6	5	7	22	22	17
Q.P.R.	15	7	2	6	32	21	16
Millwall	17	4	8	5	35	32	16
Hull C.	15	6	4	5	24	23	16
Reading	17	7	2	8	31	30	16
Cov'try	16	5	6	5	24	26	16
Bris. R.	17	6	4	7	27	33	16
Barnsley	16	6	3	7	22	24	15
Brad'f'd	17	4	6	7	23	33	14
Halifax	18	5	4	9	23	39	14
Brightn	18	4	5	9	20	34	13
Crys. P.	17	2	8	7	17	27	12
Carlisle	15	2	5	8	16	31	9

LEAGUE—DIVISION IV

	P	W	D	L	F	A	Pts
Oldham	16	11	4	1	26	14	26
Mans'f'd	15	9	4	2	32	15	22
Brent'f'd	15	8	3	4	28	20	19
Torquay	16	5	9	2	30	21	19
Crewe	16	7	5	4	26	22	19
Lincoln	17	7	4	6	33	26	18
Work't'n	16	8	2	6	24	20	18
Ald'shot	17	5	8	4	24	22	18
Gil'ham	16	8	2	6	23	23	18
Stckprt	17	5	7	5	19	19	17
Ch'field	16	4	8	4	26	26	16
D'caster	15	7	2	6	20	21	16
Rochdle	14	6	3	5	20	16	15
Oxford	18	4	7	7	31	28	15
Newport	16	5	5	6	35	33	15
D'ton	15	5	5	5	19	25	15
Barrow	16	6	3	7	29	34	15
Tr'mere	15	5	4	6	32	29	14
Brad. C.	16	5	4	7	26	28	14
Sthprt	16	3	7	6	30	48	13
York C.	16	4	4	8	18	20	12
Exeter	17	4	3	10	14	30	11
Chester	16	3	4	9	21	29	10
H'pools	17	3	3	11	24	41	9

NEXT MATCH AT AYRESOME PARK—SATURDAY, NOVEMBER 3, 1962

NORTH REGIONAL LEAGUE

MIDDLESBROUGH v GATESHEAD

(Kick-off 2.30 p.m.)

Benson's
Durham Road Car Co.
STOCKTON-ON-TEES

for MORRIS, RILEY, B.M.C.

Sales and Service

Telephone 65189

FROM THE BORO' BOARDROOM

Disappointing result—but how our boys fought!

SINCE OUR last contribution to this programme, when we discussed the question of the fixture lists providing more away matches than home matches, we have once again had a particularly hard away fixture at Chelsea.

Naturally, we hoped to continue our previous good run of away successes, but realised full well that Chelsea were very formidable antagonists. In their previous home matches they had only had two goals scored against them, which indicated that they had a very good defence and would take a lot of beating.

After Chelsea had obtained a two-goal lead we are glad to say that our boys buckled into their job and succeeded in equalising.

In the second half, Chelsea succeeded in scoring what proved to be the winning goal. While the members of the board who were present at the match were naturally disappointed with the result, as indeed were all the players themselves, it was particularly gratifying to note that all the Middlesbrough players buckled into their job conscientiously and indeed, with slightly better finishing, we could easily have earned a draw.

The home supporters, of course, naturally gave Chelsea a tremendous amount of encouragement and were not too kind to certain Middlesbrough players, but in spite of this our boys kept on playing football and any Middlesbrough supporter who was present could only be proud of the efforts our players made to win this match.

Since the acquisition of our new players we have in certain ways been dogged by misfortune in the case of injuries, which has not always allowed us to play our full team. The absence of Peacock on international duty once again resulted in the manager having to make team changes.

It is our fervent hope that we will be in a position in the future to play our regular first team for a period of weeks to enable them to settle down into what we feel will be a match-winning combination.

SAY 'SPORTS GAZETTE'
EVERY SATURDAY

TODAY'S TEAMS

LEAGUE—DIVISION II

SATURDAY, OCTOBER 27, 1962

KICK-OFF 3.0 p.m.

MIDDLESBROUGH v LUTON TOWN

MIDDLESBROUGH

RIGHT]		(1) LIGHTENING		[LEFT
	(2) McNEIL		(3) JONES	
	(4) YEOMAN	(5) NURSE	(6) NEAL	
(7) KAYE	(8) GIBSON	(9) PEACOCK	(10) ORRITT	(11) HUME

Referee: MR. L. J. HAMER (Bolton)

Linesmen:

MR. G. D. GREEN (E. Boldon); MR. J. A. DURKE (West Stanley)

(Red flag)

(Yellow flag)

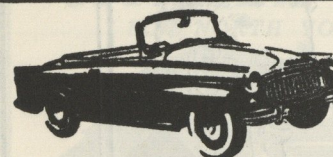
(11) WALDEN	(10) FLEMING	(9) TURNER	(8) DAVIES	(7) CLAPTON
(6) McGUFFIE		(5) KELLY	(4) MORTON	
	(3) BRAMWELL		(2) McNALLY	

LEFT]

BAYNHAM LUTON TOWN

[RIGHT

Any changes in above teams will be announced over the loudspeaker.



The SKODA
Felicia Convertible

We'll 'Match' any 'Team'
when it comes to Buying
or Selling CARS or
MOTOR-CYCLES

Distributors for
SKODA, GOGGOMOBIL, TROJAN,
ISETTA, BOND, NOBEL, SCOOTA-
CAR, PRIOR, JAWA, GREAVES, ISO,

Stocking dealers for:—
STANDARD, TRIUMPH & FIAT

All enquiries: General Manager, C. B. BOWES.

BLUE BELL GARAGES

(INCORPORATING CONTINENTAL
and EUROPEAN CARS LTD.)

Blue Bell Corner,
Acklam,
MIDDLESBROUGH

TRIUMPH HERALD 1200
Convertible



Telephone: BROOKFIELD 227.

IT'S A FACT



ALTHOUGH MIDDLESBROUGH ARE THE OLDEST OF THE THREE BIG NORTH-EASTERN CLUBS, THEY WERE THE LAST OF THE TRIO TO JOIN THE FOOTBALL LEAGUE (THEN A 2-DIVISION COMPETITION) IN 1899...

MIDDLESBROUGH WON PROMOTION IN THEIR THIRD SEASON, WITH A GOALS RECORD THAT CAN NEVER BE SURPASSED. THEY SCORED MORE GOALS (90) AND GAVE AWAY LESS (24) THAN ANY CLUB IN EITHER DIVISION.



AN AUSTRALIAN SCORED THE VERY FIRST CENTURY IN TEST CRICKET...

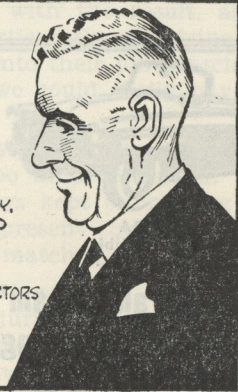
CAN YOU NAME HIM?

Answer below

FRED EVERISS

JOINED WEST BROMWICH ALBION AS AN OFFICE BOY (4/- A WEEK)...

IN 1902, WHEN HE WAS 19, HE BECAME SECRETARY, A POSITION HE HELD FOR THE NEXT 46 YEARS. HE WAS THEN ELECTED TO THE BOARD OF DIRECTORS AND CONTINUED TO SERVE THE CLUB UNTIL HIS DEATH IN 1951.



It's a fact

Answer: Charles Bannerman (166 at Melbourne in 1877). It was the first Test ever played.

TRAVEL BY TRAIN TO HOME AND AWAY MATCHES

AWAY MATCHES:— Reduced fares for parties (minimum of 8) to all matches. Excursions can be arranged. Friday overnight facilities to London (55/-).

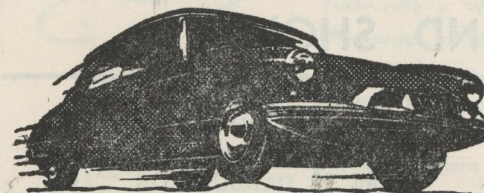
HOME MATCHES:— A half-hourly Diesel Service operates between MIDDLESBROUGH and Saltburn and Darlington. An hourly Diesel Service is available between MIDDLESBROUGH—West Hartlepool—Sunderland—Newcastle. Cheap Day Tickets on all local branches.

SPECIMEN CHEAP DAY RETURN FARES FROM OR TO MIDDLESBROUGH
DARLINGTON 3/6, WEST HARTLEPOOL 3/6, SUNDERLAND 8/-, NEWCASTLE 10/6

Ask for full details at Stations, Travel Agencies, or District Commercial Superintendent, Zetland House, Middlesbrough. Tel. 45481 (Ext. 252).

BRITISH RAILWAYS

CITROEN DISTRIBUTORS FOR NORTH YORKSHIRE & SOUTH DURHAM



BENSONS
of
Brunswick St.

Telephone 66074

Don't say **HILLMAN**
HUMBER
say **SUNBEAM**
BENSONS of Stockton

HALF-TIME

SCORE BOARD

FIRST SHOW

A	ARSENAL WOLVES	J	MAN. UTD. WEST HAM
B	BIRMINGHAM ASTON VILLA	K	SHEFF. W. BLACKPOOL
C	BOLTON W. NOTTS F.	L	W. BROM. LIVERPOOL
D	BURNLEY MAN. CITY	M	DERBY C. CHELSEA
E	EVERTON IPSWICH	N	HUDDERSFIELD SOUTHAMPTON
F	FULHAM BLACKBURN R.	P	NEWCASTLE SWANSEA
G	LEICESTER SHEFF. UTD.	R	NORWICH SUNDERLAND
H	LEYTON TOTTENHAM H.	S	PORTSMOUTH BURY

SCORES ON NO. 1 KEY BOARD WILL BE REMOVED AFTER A SHORT PERIOD AND REPLACED BY SCORES ON NO. 2 KEY BOARD

SECOND SHOW

a	PRESTON ROTHERHAM	j	DONCASTER OLDHAM
b	WALSALL LEEDS UTD.	k	EXETER C. DARLINGTON
c	BOURNEMOUTH CRYSTAL P.	l	MANSFIELD BARROW
d	BRADFORD Q.P.R.	m	STOCKPORT LINCOLN CITY
e	BRISTOL C. BARNLEY	n	WORKINGTON HARTLEPOOLS
f	NOTTS C. WREXHAM	p	CARDIFF SCUNTHORPE
g	WATFORD NORTHAMPTON	r	GRIMSBY T. STOKE C.
h	CHESTERFIELD SOUTHPORT	s	PLYMOUTH CHARLTON

Letters A, B, C, etc., correspond with letters on "Gazette" Key Board. X—Match off.

..... after the match

SEE YOU AT

Spark's
WIMPY
BAR



Tuck into a Wimpy, the pure beef hamburger at Sparks exciting Wimpy Bar. Here, you can enjoy the latest and the best in modern catering—a meal in minutes, satisfying and with the well-known Sparks quality touch!

AT THE CAFE ROYAL
LINTHORPE ROAD
MIDDLESBROUGH

OPEN TILL TEN IN THE EVENING

Printed and Published by "Evening Gazette." Borough Road, Middlesbrough



FOR

*'MEALS with a
DIFFERENCE'*

Visit the
**EMPORIUM
CAFE**

Quick Service . . .

Reasonable Charges

Middlesbrough Co-operative Society, Ltd.
Linthorpe Road

**VAUX
SAMSON
ALE**

the **STRONGER** beer