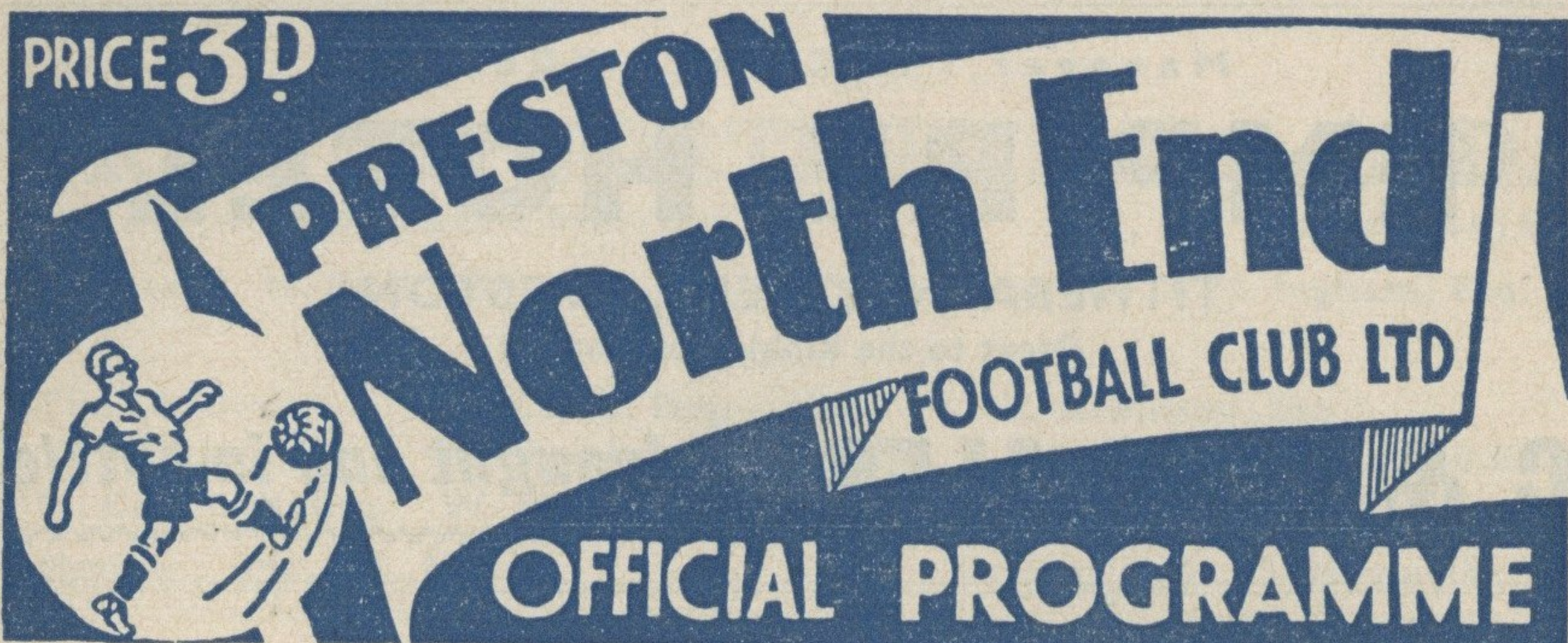


PRICE 3D



PRESTON North End

FOOTBALL CLUB LTD

OFFICIAL PROGRAMME

No. 4

TUESDAY, SEPTEMBER 11th, 1962

HOLMES (PRESTON) LIMITED

MORRIS - MORRIS - MORRIS

Cars and Commercials

Visit Preston's most up-to-date showrooms
and see our range of Morris Vehicles.

Write, Phone or Call— Demonstrations Given without obligation.
Personal Service given to every Customer.

SALES AND SERVICE
BLACKPOOL ROAD, PRESTON

TELEPHONE : 89233 — 8 lines

Morris Retail Dealers.

Manager : MICHAEL KEEGAN

EMPIRE HOTEL

TITHEBARN STREET, PRESTON

(Next to the Ribble Bus Station)

C. & S. X-L ALES *on draught and in bottle*

LEAGUE DIVISION TWO

	P.	W.	D.	L.	Goals		Pts.
					F.	A.	
Huddersfield Town	7	4	3	0	18	7	11
Chelsea	6	4	1	1	10	3	9
Sunderland	7	4	1	2	11	6	9
Norwich City	7	3	3	1	13	9	9
Bury	7	4	1	2	9	7	9
Portsmouth	6	3	2	1	11	8	8
Rotherham Utd.	6	4	0	2	11	9	8
Scunthorpe Utd.	6	4	0	2	9	8	8
Plymouth Argyle	6	3	1	2	14	6	7
Swansea Town	6	3	1	2	10	9	7
Walsall	7	3	1	3	11	14	7
Newcastle Utd.	7	2	2	3	18	15	6
North End	7	2	2	3	8	15	6
Middlesbrough	7	3	0	4	12	20	6
Derby County	6	1	3	2	9	10	5
Leeds United	6	2	1	3	8	9	5
Stoke City	6	0	4	2	5	7	4
Cardiff City	7	1	2	4	10	14	4
Luton Town	7	1	2	4	7	12	4
Charlton Athletic	6	1	2	3	6	11	4
Grimsby Town	6	1	1	4	6	11	3
Southampton	6	1	1	4	6	12	3

RAMSBOTTOMS of Preston

for HILLMAN and HUMBER cars

★

SERVICE AND REPAIRS

FOR ANY CAR OR COMMERCIAL

★

Oxheys Service Station ... **BROOK STREET**

Telephone PRESTON 57834

OFFICIAL JOURNAL of the

PRESTON NORTH END F.C. LTD.

Registered Office : DEEPDALE, PRESTON

Telephone : 3818

Chairman : N. Buck, Esq.

Vice-Chairman : J. H. Ingham, Esq.

Directors :

The Chairman

W. Cross, Esq.

R. Robinson, Esq.

Vice-Chairman

A. Harrison, Esq., B.E.M.

W. Shorrocks, Esq., M.B.E.

H. Cartmell, Esq.

W. Mercer, Esq.

Dr. A. R. Wood

Manager : Mr. J. L. Milne

Secretary : Mr. G. Howarth

CLUB NOTES

Luton Town are comparative strangers to the Deepdale scene with only eight previous league engagements on this ground, despite the fact that the present season is their 39th as members of the Football League competition, and the 36th without a break. Actually our association with them goes back to February 2nd, 1895, when we visited Luton in the First Round of the F.A. Cup tournament.

Luton's first excursion to Deepdale was as recently as January, 1950, in the Second Division, when they defeated us by a lone goal, during a disastrous North End slump of six games without a win including the Watford Cup replay debacle.

Paradoxically the "Hatters" ancestry harks back some 77 years, the Club being founded in 1885 from the remains of two local soccer organisations known as Excelsior F.C. and Wanderers F.C. Of mutual interest concerning the bygone days is the matter of professional status being forced upon the then reluctant supreme ruling body. In 1891 Luton pioneered this movement in the South, several years after North End had played a similarly successful role in the North. They gained admission to the Football League (Division Two) in 1897, but after two seasons they were not re-elected and so returned to the Southern League. When League Three South was created for season 1920-21 they became one of the elected 22 clubs.

Champions in season 1936-37 with further promotion in 1955 when the Bedfordshire team sampled top class football for the first time. They were relegated at the end of the 1959-60 season to coincide with Tom Finney's last League game on the final day. The Luton record on this ground is won one, drawn one and lost six.

Insurance **GARRATT, SON & FLOWERDEW LTD.**
Incorporated Insurance Brokers

7 WINCKLEY SQUARE, PRESTON Tel. 57604 (6 lines)

**INSURANCE BROKERS TO THE PRESTON NORTH END FOOTBALL CLUB
WE TRANSACT EVERY KIND OF INSURANCE & WELCOME YOUR ENQUIRIES**

For regular
LAUNDRY
and
DRY CLEANING
Service
IN PRESTON
& DISTRICT



Lakeland
LAUNDRIES
FORMERLY CENTRAL LAUNDRIES
CATON ROAD
LANCASTER
Phone 2522

STAFF DETAILS

Name	Position	Height	Weight	Birthplace	Previous Club
Alston, A. ...	Forward	5 8½	10 6	Preston	Amateur
Alty, C. ...	Half back	5 9¼	11 7	Southport	Amateur
Barber, D. E. ...	Half back	5 9	11 10	Wombwell	Barnsley
Barton, J. B. ...	Goal	5 10¼	12 3	Wigan	Amateur
Battersby, K. ...	Forward	5 7	10 0	Preston	Amateur
Biggs, G. A. ...	Forward	6 1	12 9	Bristol	Bristol R.
Bond, J. B. ...	Forward	5 7	10 0	Preston	Amateur
Buckley, P. A. ...	Forward	5 6	10 0	Chester	Amateur
Cunningham, W. ...	Full back	5 5½	12 4	Fifeshire	Airdrieonians
Davenport, C. ...	Forward	5 10½	10 12	Bolton	Amateur
Dawson, A. D. ...	Forward	5 10	13 0	Aberdeen	Manchester Un.
Donnelly, J. ...	Full back	5 9½	11 2	W. Lothian	Celtic
Gornall, J. ...	Half back	5 9	12 5	Preston	Amateur
Jacques, J. ...	Half back	5 9½	11 2	Durham	Amateur

Hold it! with **SOCKET HEAD SCREWS**
supplied by **Olivers**
SOCKET SCREWS LTD.

Specialist Distributors of Socket Screws in High Tensile and Stainless Steel.
* Send for Stock List. Can we advise you on new applications?

OLIVERS SOCKET SCREWS LTD.
MOUNT PLEASANT, LEYLAND, LANCS Phone: LEYLAND 21202

SEASON 1962-63

Name	Position	Height	Weight	Birthplace	Previous Club
Kendall, H. ...	Half back	5 7½	10 5	Durham	Amateur
Kelly, A. ...	Goal	6 0½	12 0	Dublin	Drumcondra
Lapot, S. ...	Half back	5 9½	10 2	Edinburgh	Smeaton B.C.
Lee, F. ...	Forward	5 7	10 2	Chorley	Amateur
Lyons, A. ...	Half back	5 10	12 6	Durham	Amateur
McGowan, G. ...	Forward	5 8½	10 6	Lanarkshire	Wishaw Juns.
Nettleton, T. ...	Full back	5 7½	11 5	Consett	Amateur
O'Neill, J. ...	Full back	5 10	12 1	Dublin	Drumcondra
Ross, G. ...	Full back	5 9	11 13	Inverness	Amateur
Singleton, A. ...	Half back	5 11½	12 12	Preston	Amateur
Smith, J. ...	Half back	5 11½	12 5	Arbroath	Amateur
Spavin, A. ...	Forward	5 7½	11 1	Lancaster	Amateur
Thompson, P. ...	Forward	5 8½	11 5	Carlisle	Amateur
Wilson, D.C. ...	Forward	5 6½	11 3	Nelson	Amateur
Wilson, R. ...	Full back	5 9	11 12	Liverpool	Clitheroe
Wylie, J. E. ...	Half back	5 11	12 9	Scotforth	Huddersfield T.

TURN TO TELEHIRE for
UNBEATABLE RENTAL TERMS AND SERVICE

FOR TELEVISION, RADIO, RADIOGRAMS, TAPE RECORDERS, CLEANERS,
REFRIGERATORS, WASHING MACHINES

111 - 113 CHURCH STREET, PRESTON

SCOUT MOTOR SERVICES LTD

LUXURIOUS SALOON COACHES
FOR PRIVATE HIRE

STARHOUSE SQUARE GARAGE . PRESTON
Telephone 3021

TIMPSON
Football
Boots
and FOOTBALLS

TIMPSON football boots are points ahead.
Ask to see "Shooting Star" and the finest
Continental designs. Unbeatable at their prices.
Boys' as well as men's. As supplied to leading
clubs.

Timpson make first-class footballs, too. All
sizes and types, at very keen prices.

TIMPSON SHOE SHOP
MARKET PLACE, PRESTON

NEXT HOME GAMES

Saturday next, 15th September.

Kick-off, 3-0 p.m.

SECOND DIVISION

PRESTON NORTH END v. MIDDLESBROUGH

Saturday, September 22nd,

Kick-off, 3-0 p.m.

CENTRAL LEAGUE

NORTH END RESERVE v. NEWCASTLE UNITED RESERVE

SEATS BOOKABLE IN ADVANCE FOR SOUTH PAVILION (8/-) AND WEST
STAND (7/-) FOR FIRST TEAM LEAGUE GAMES

GET YOUR COPY OF THE F.A. DIARY at 4/- (including Postage) FROM THE F.A.,
22 LANCASTER GATE, LONDON, W.2

PARKING OF MOTOR VEHICLES

All football supporters are asked to co-operate with the police and fire services in traffic matters near
Deepdale. Large car parks exist within a short distance of the ground and more use ought to be made of
them. Indiscriminate parking, often on both sides of narrow streets, is an undesirable hazard to the
safety of lives and property. In an emergency these conditions would seriously interfere with fire engines,
ambulances and police vehicles. Your co-operation in this matter would be appreciated.

A. BOAST & CO. LTD.

Removal Contractors

REGULAR DELIVERIES TO LONDON AND SOUTH by up-to-date Low-loading Vans
to all Parts

Preston's Most Modern Filling and Vehicle Testing Station

Open Weekdays 7.30 a.m. to 11.0 p.m. Sundays 9.0 a.m. to 2.0 p.m.

SERVICE WHILE YOU PARK

EMPIRE GARAGE, DERBY STREET, PRESTON

Telephone PRESTON 4609 and 57969

WILLIE CUNNINGHAM (SPORTS) LTD.

SCOUT, GUIDE, BROWNIE AND CUB WEAR

"Best in the field" Bukta Sportswear used by all leading clubs
Also Agents for Slazengers and Dunlop Sports Goods
Price Lists on Request.

47 CHURCH STREET, PRESTON — Tel. 57322

OFFICIAL SUPPLIERS TO PRESTON NORTH END F.C.

**LEAGUE APPEARANCES MADE AND GOALS SCORED
BY THE PLAYING STAFF**

(UP TO END OF LAST SEASON)

	1949	1950	1951	1952	1953	1954	1955	1956	1957	1958	1959	1960	1961	Total	Goals
	-50	-51	-52	-53	-54	-55	-56	-57	-58	-59	-60	-61	-62	Apps.	Scrd.
Cunningham	30	31	42	41	30	24	24	41	42	42	24	31	29	431	3
Wilson (R.)	—	—	—	1	4	21	24	1	—	4	15	8	12	90	—
Alston	—	—	—	—	—	—	—	—	2	7	10	37	31	87	22
Barton	—	—	—	—	—	—	—	—	—	3	—	—	4	7	—
O'Neill	—	—	—	—	—	—	—	—	—	2	—	36	3	41	—
Smith	—	—	—	—	—	—	—	—	—	18	34	10	31	93	8
Wylie	—	—	—	—	—	—	—	—	—	5	—	39	38	82	1
Singleton	—	—	—	—	—	—	—	—	—	—	—	37	40	77	—
Thompson	—	—	—	—	—	—	—	—	—	—	—	38	42	80	16
Spavin	—	—	—	—	—	—	—	—	—	—	—	9	26	35	3
Ross	—	—	—	—	—	—	—	—	—	—	—	3	40	43	—
Wilson (D.)	—	—	—	—	—	—	—	—	—	—	—	2	23	25	2
Kelly	—	—	—	—	—	—	—	—	—	—	—	2	38	40	—
Biggs	—	—	—	—	—	—	—	—	—	—	—	—	39	39	21
Barber	—	—	—	—	—	—	—	—	—	—	—	—	17	17	1
Dawson	—	—	—	—	—	—	—	—	—	—	—	—	19	19	9
Gornall	—	—	—	—	—	—	—	—	—	—	—	—	1	1	—

TRAVEL BY RIBBLE

TO NORTH END HOME AND AWAY GAMES

Regular Services to Deepdale for first team home games from Bretherton, Chorley,
Clayton Green, Croston, Freckleton, Garstang, Hoole, Lancaster, Leyland, Longton,
Longridge, Lytham, Tardy Gate, Tarleton, Walmer Bridge, Warton, Whittle,
Wigan, etc.

Coaches available for Private Parties—Quotations without obligation at any local office

RIBBLE MOTOR SERVICES LTD., 30 Lancaster Rd., PRESTON—Tel. 4272

BUILDERS AND CONTRACTORS

JOHN TURNER & SONS (Preston) Ltd.

WEST VIEW, PRESTON

CONTRACTORS TO
PRESTON NORTH END
PAVILION EXTENSION,
ETC., ETC.

TELEPHONE :
PRESTON 56661

Makers of Ribbleton
Briquettes — Obtainable
through your Coal Merchant

R PRESTON NORTH END (White Shirts, Blue Shorts) L

1
KELLY

2
DONNELLY

3
ROSS

4
WYLIE

5
SINGLETON

6
SMITH

7
WILSON

8
ALSTON

9
DAWSON

10
SPAVIN

11
THOMPSON

Referee :
A. HOLLAND
(Barnsley)

Kick-off : 7-30 p.m.



Linesmen :
Red Flag—L. Clarke
Yellow Flag—A. W. S. Jones

JARDINE 11

McKECHNIE 10

TURNER 9

FLEMING 8

WALDEN 7

PACEY 6

KELLY 5

MORTON 4

BRAMWELL 3

McNALLY 2

BAYNHAM 1

L LUTON TOWN (Red Shirts, White Shorts) R

When you are entertaining!

Don't forget to
obtain your

BEERS . WINES . SPIRITS

FROM

The Friargate Wine Shop, 23 Friargate

The Deepdale Wine Shop, 206 Deepdale Road

The Fulwood Wine Shop, 79 Watling Street Rd.

The Newhall Wine Shop, 156 New Hall Lane

The Plungington Wine Shop, 6 Plungington Road

The Ribbleton Wine Shop, 43 Blackpool Road

The Acregate Wine Shop, 125 Cemetery Road

The Wellington Wine Shop, 65 Wellington Road

The Ashton Wine Shop, 420 Blackpool Road

Commencing Shortly

£300

Grand Weekly Draw

£60 PER DAY FOR FIVE DAYS

- Agents urgently wanted
- Generous out-of-pocket expenses paid to all agents
- Become an Agent now

Application Form Overleaf

FOR 1/- PER WEEK YOU WILL RECEIVE A NUMBER WHICH WILL BE INCLUDED IN THE DRAW EACH DAY

APPLICATION FORM

Mr. / Mrs. / Miss

Address

I am over 16 years of age.

Signed

I Require

Cards

HAND IN OR POST TO

The Secretary,
Preston North End Supporters Club,
Deepdale, Preston.

For your AUTO-
ELECTRICAL
WORK

call at

TOM FINNEY

(AUTO LIMITED)

79 / 91 HIGH STREET,
Preston Tel. 84396

TOM FINNEY LTD.

- ★ ELECTRICAL ENGINEERS
- ★ PLUMBING CONTRACTORS
- ★ RE-WINDING SPECIALISTS
- ★ DECORATORS

53 MOOR LANE, PRESTON

Telephone : Preston 57563/4

PRESTON NORTH END SUPPORTERS' CLUB

Honorary Committee :

- | | |
|---|--------------------------------|
| Mr. T. Finney (Chairman) | Mr. T. Hodgson (Vice-Chairman) |
| Mr. K. Horton (Secretary) | Mr. G. Beardwood (Treasurer) |
| Mr. M. Fletcher (Assistant Secretary) | |
| Messrs. C. Ainsworth, R. Bolton, N. Gardner, T. Melling, W. Savage,
J. Unsworth, A. Wilson, J. Whalley | |

THE ENROLMENT IS GOING WELL, OVER 1,400
HAVE JOINED AND IT IS HOPED TO ORGANIZE
THE POOLS DRAW SHORTLY. MAKE SURE YOUR
NUMBER WILL GO INTO THE HAT FOR THE FIRST
DRAW.

JOIN NOW

TELEPHONE 3071

J. J. MILLER (PRESTON) LTD.

MOTOR BODY REPAIRS

PANEL BEATING ★ WELDING ★ CELLULOSE SPRAYING

Free Quotations

Latest Humber Wedding Cars

TAXIS DAY AND NIGHT

Fixtures and Results

The Kick-off Times for all Games is at 3.0 p.m. EXCEPT WHERE OTHERWISE STATED

FOOTBALL LEAGUE

1962	
Aug. 18—Norwich City	h 2 2
.. 22—Plymouth Argyle.....	a 1 7
.. 25—Walsall	a 1 4
7-30 .. 28—Plymouth Argyle.....	h 0 0
Sept. 1—Newcastle United	h 2 1
.. 5—Luton Town.....	a 2 0
.. 8—Derby County.....	a 0 1
7-30 .. 11—Luton Town	h
.. 15—Middlesbrough	h
.. 22—Huddersfield Town.....	a
.. 29—Cardiff City	h
Oct. 6—Southampton	a
.. 13—Scunthorpe United.....	h
.. 20—Bury	a
.. 27—Rotherham United	h
Nov. 3—(1) Charlton Athletic	a
.. 10—Stoke City	h
.. 17—Sunderland	a
.. 24—(2) Leeds United	h
Dec. 1—Swansea Town	a
.. 8—Chelsea	h
.. 15—Norwich City	a
.. 22—Walsall	h
11-0 .. 26—Portsmouth	h
.. 29—Portsmouth	a
1963	
Jan. 5—(3)	
.. 12—Newcastle United	a
.. 19—Derby County.....	h
.. 26—(4)	
Feb. 2—Middlesbrough	a
.. 9—Huddersfield Town.....	h
.. 16—(5) Cardiff City	a
.. 23—Southampton	h
Mar. 1—Scunthorpe United.....	a
.. 9—(6) Bury	h
.. 16—Rotherham United	a
.. 23—Charlton Athletic	h
.. 30—(S.F.) Stoke City	h
Apr. 6—Sunderland	a
.. 12—Grimsby Town.....	a
.. 13—Leeds United	a
11-0 .. 15—Grimsby Town.....	h
.. 20—Swansea Town.....	h
.. 27—Chelsea	a
May 4—(Final).	

CENTRAL LEAGUE

1962	
Aug. 18—Chesterfield	a 1 1
7-30 .. 21—Sheffield United	h 3 1
.. 25—Bolton Wanderers	h 1 3
.. 27—Sheffield United	a 0 0
Sept. 1—Everton	a 0 2
7-30 .. 4—Sheffield Wednesday	h 0 4
.. 8—Derby County	h 1 0
.. 15—West Bromwich A.....	a
.. 17—Sheffield Wednesday	a
.. 22—Newcastle United	h
.. 29—Huddersfield Town.....	a
Oct. 6—Blackburn Rovers	h
.. 13—Barnsley	a
.. 20—Manchester City	a
.. 27—Leeds United	a
Nov. 3—Stoke City	h
.. 10—Aston Villa	a
.. 17—Wolverhampton W.	h
.. 24—Liverpool	a
Dec. 1—Bury	h
.. 8—Blackpool	a
.. 15—Chesterfield	h
.. 22—Bolton Wanderers	a
.. 26—Manchester United.....	a
.. 29—Manchester United.....	h
1963	
Jan. 5—	
.. 12—Everton.....	h
.. 19—Derby County	a
.. 26—	
Feb. 2—West Bromwich A.....	h
.. 9—Newcastle United	a
.. 16—Huddersfield Town.....	h
.. 23—Blackburn Rovers	a
Mar. 2—Barnsley	h
.. 9—Manchester City	a
.. 16—Leeds United	h
.. 23—Stoke City	a
.. 30—Aston Villa	a
Apr. 6—Wolverhampton W.	a
.. 12—Burnley	h
.. 13—Liverpool	h
.. 15—Burnley.....	a
.. 20—Bury	a
.. 27—Blackpool	h
May 4—	

MEET THE OPPOSITION . . .

BAYNHAM, Ron (*Goalkeeper*). Has been with Luton since 1951. Secured from the Southern League club, Worcester City. He has represented England on several occasions. Played for the Football League on two occasions and also for England 'B' Team versus Yugoslavia 'B.' Was a member of the F.A. Touring Party to South America in 1959

McNALLY, B. (*Right Back*). Can occupy either full back position. Came from the League of Ireland club, Shelbourne and has been with Luton since May, 1956. Played for Eire 'B' versus Rumania in Dublin in 1957 and also for Eire versus Czechoslovakia.

BRAMWELL, John (*Left Back*). One of the two players who joined Luton from Everton when Billy Bingham, the Irish International was transferred to that club in October, 1960. Is a very capable player and worthy to be considered for International honours.

MORTON, R. (*Right Half Back*). Local born and has been with the club since 1948. Played for England 'B' versus Switzerland 'B' team, the Football Combination versus the Dutch XI (on two occasions) and also for the Football Association versus the Army. Was chosen as a Reserve for England at Wembley in 1955 and again when they played Ireland in 1958. Usually a wing half but has made numerous appearances at Centre Forward.

KELLY, Terry (*Centre Half Back*). Born in Luton. Played for Hitchin Town before joining the Luton club in 1950. Originally played wing half, but was successfully converted into a Centre Half. A very strong player, who holds his own with most Centre Forwards.

PACEY, D. (*Left Half Back*). Born in Luton, signed for the Club in 1956. Has played for the F.A. versus the R.A.F. and was also a member of the England Under 23 Team against Germany and Italy. Very strong player with a liking for getting among the goalscorers.

WALDEN, H. (*Outside Right*). Joined Luton from Kettering in January last year and stepped straight into the first team at Norwich, making 34 League and Cup appearances last season. Has a very forceful shot.

TURNER, G. (*Inside Right*). Came to Luton as a Wing Half upon his demob. from the Navy but found his true position in the forward line. Represented the English League versus the Scottish League in 1955 and also played for the F.A. XI versus the Army in 1958. The Town's leading goal scorer for eight seasons out of the last nine. Is a skilled player with a tremendous shot.

GOLDIE, James (*Centre Forward*). Another player recommended by Dave Hutchison, signing him in April, 1962. His first game, against Arsenal Reserves, showed him to be a player of great potential.

LORNIE, J. (*Inside Left*). An Aberdonian, he arrived here from Leicester City whom he joined in 1958 as an Inside Forward. Was converted to Centre Forward in which position he played several times in the City First Team.

FLEMING, James (*Outside Left*). Came to Luton from Patrick Thistle when they transferred Joe McBride, in November, 1960. Is a very capable player with a tremendous shot and good turn of speed.

THIS SPACE
TO LET

LEAGUE APPEARANCES AND SCORERS, 1962-63

PLAYER	Goal	R.B.	L.B.	R.H.	C.H.	L.H.	O.R.	I.R.	C.F.	I.L.	O.L.
KELLY	6	—	—	—	—	—	—	—	—	—	—
WILSON (R.)	—	2	—	—	—	—	—	—	—	—	—
DONNELLY	—	5	—	—	—	—	—	—	—	—	—
ROSS	—	—	4	—	—	—	—	—	—	—	—
O'NEILL	—	—	3	—	—	—	—	—	—	—	—
BARBER	—	—	—	3	—	—	—	—	—	—	—
SMITH	—	—	—	—	3	4	—	—	—	—	—
LAPOT	—	—	—	—	—	2	—	—	—	—	—
WYLIE	—	—	—	4	—	1	—	—	—	—	—
WILSON (D.)	—	—	—	—	—	—	6	—	—	—	—
ALSTON	—	—	—	—	—	—	1	—	—	1	3
BIGGS	—	—	—	—	—	—	—	7	—	—	—
DAWSON	—	—	—	—	—	—	—	—	7	—	—
SPAVIN	—	—	—	—	—	—	—	—	—	3	—
THOMPSON	—	—	—	—	—	—	—	—	—	3	4
SINGLETON	—	—	—	—	4	—	—	—	—	—	—
BARTON	—	1	—	—	—	—	—	—	—	—	—

SCORERS

DAWSON 3	SPAVIN 1	BIGGS 1	WILSON (D) 2
		ALSTON 1				

PRESTON'S PREMIER HOTEL

Opposite Railway Station

VICTORIA & STATION HOTEL, PRESTON

FULLY LICENSED

Bedrooms with Running Hot and Cold Water

Football enthusiasts specially catered for

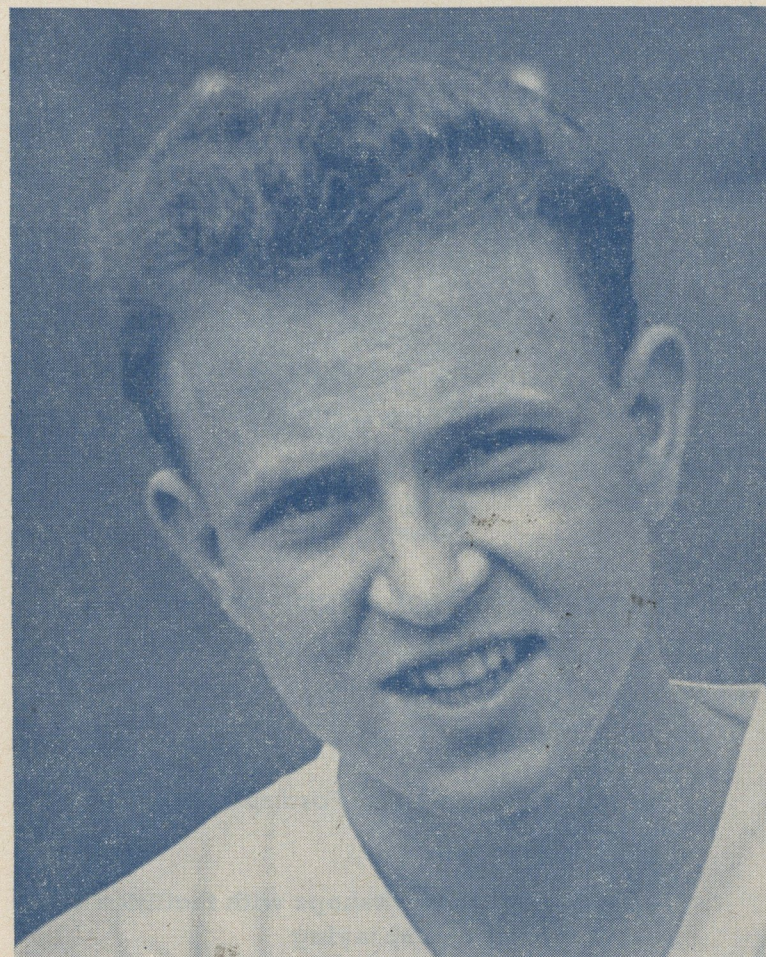
BANQUETS FROM 10 TO 250 IN PRIVATE ROOMS A SPECIALITY

Phones : Manager's Office 4632 (Private Branch Exchange)

Visitors 378011

G. & S. FAMOUS 'XL' ALES on draught and in bottle

Resident Manager : HUGH CATTRALL, M.H.C.I.



JIMMY SMITH

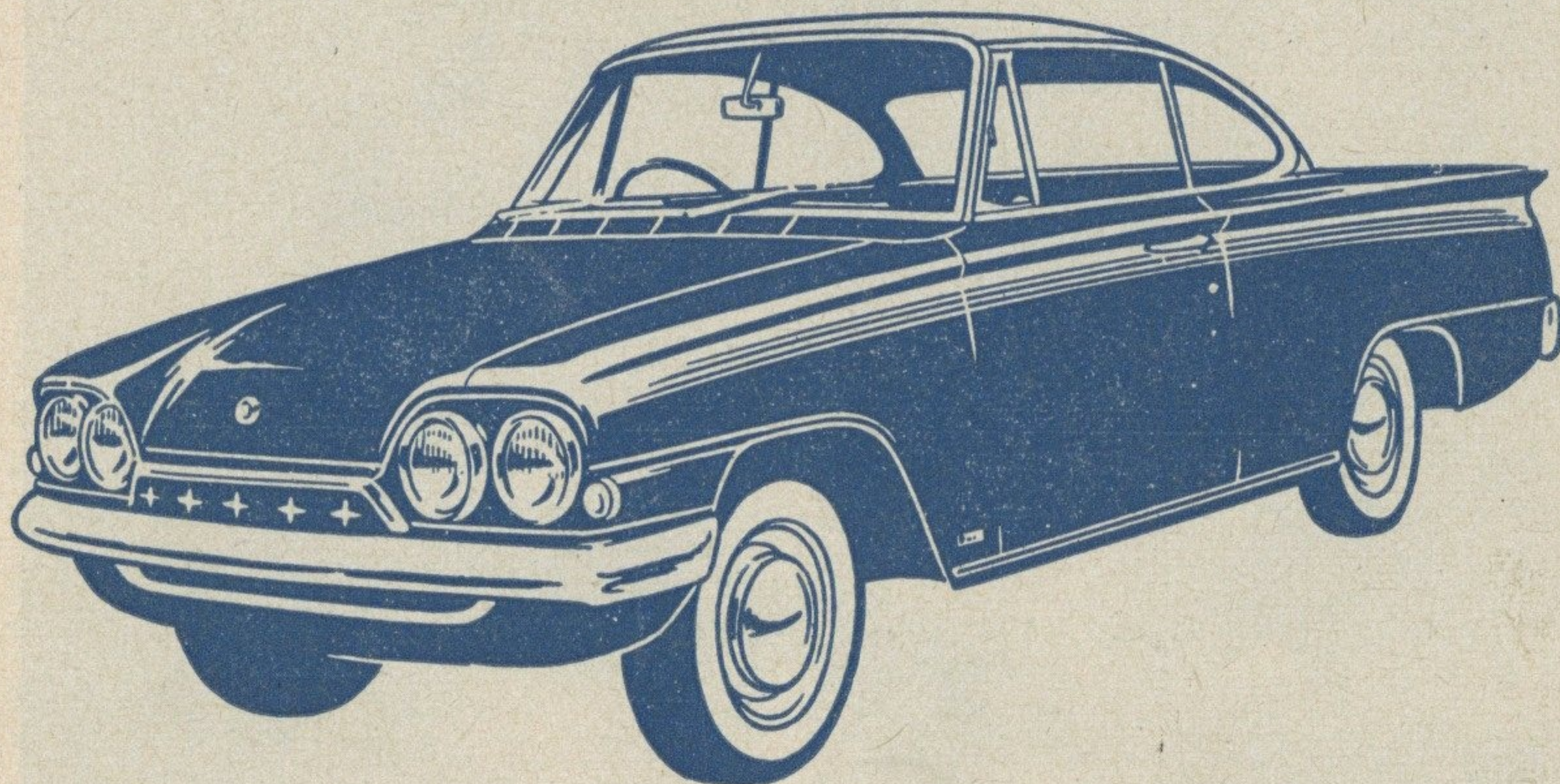
made his hundredth League appearance last Saturday.

BRADSHAW'S MOTOR HOUSE LTD

Main FORD Dealers

MARSH LANE,
PRESTON, Tel. 4083

BOLTON STREET,
CHORLEY, Tel. 3745



SEE THE FABULOUS FORD RANGE OF BOTH
PASSENGER CARS AND COMMERCIAL VEHICLES
PLUS OUR WIDE RANGE OF A1 GUARANTEED
USED VEHICLES.

*We hold a large stock of Ford spare parts
for all models*

**See our modern workshops with facilities for
major repairs and spraying**

FOR SALES . . . SERVICE . . . PARTS

You must visit BRADSHAW'S