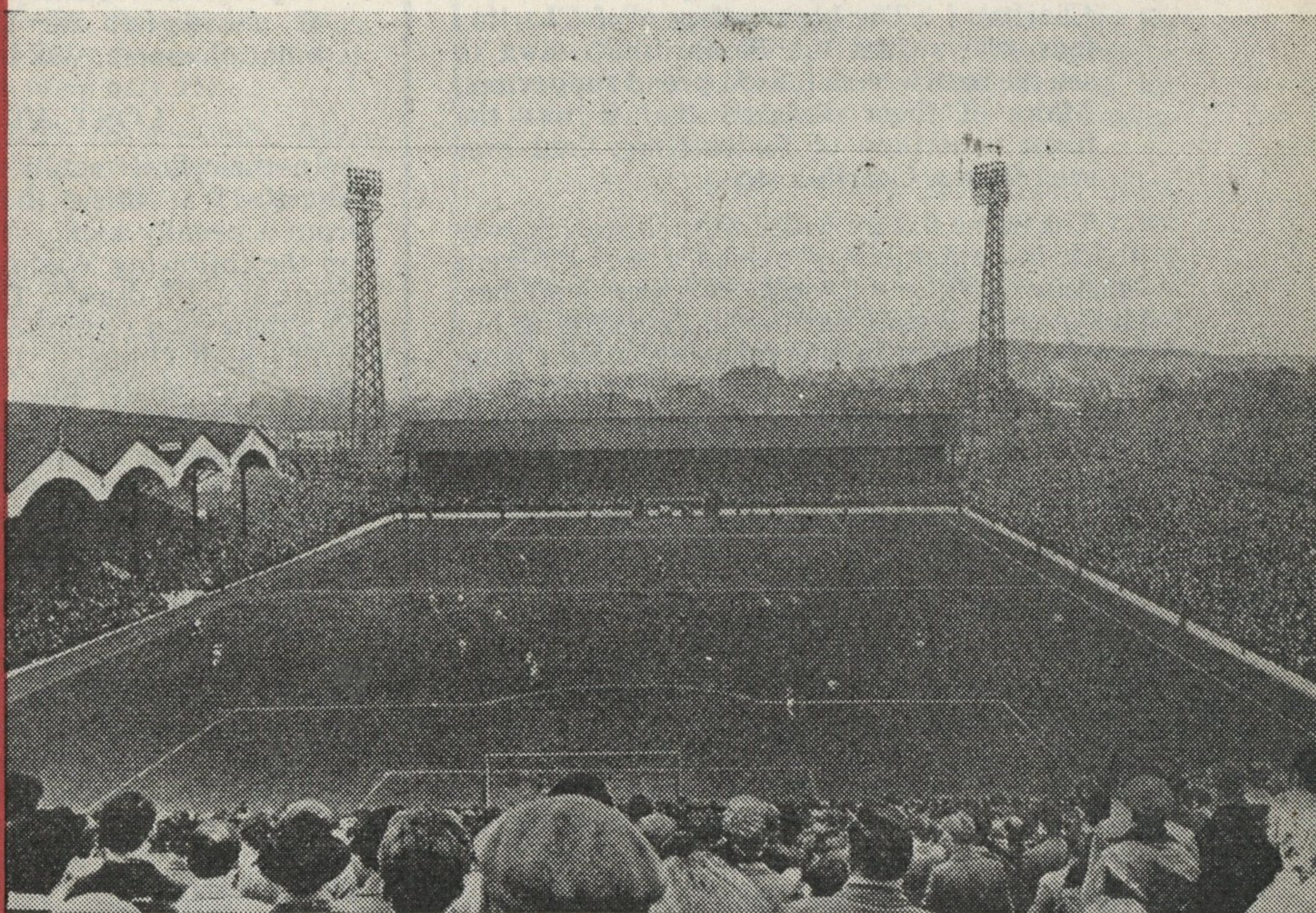


CHARLTON ATHLETIC

Vol.XXX—3

SATURDAY, 1st SEPTEMBER, 1962



LUTON TOWN

OFFICIAL PROGRAMME

6^D

CHARLTON ATHLETIC FOOTBALL CO. LTD

FOUNDED 1905

Directors :
 E. M. GLIKSTEN (Chairman)
 R. LAW D. H. CLARK F. H. WILKINSON
 D. R. GLIKSTEN F. W. EDMONDS
 Manager : Secretary :
 F. HILL J. PHILLIPS
 Medical Officers — Dr. JAMES and Dr. SPENCER

Reg. Office and Ground :
THE VALLEY, FLOYD ROAD, LONDON, S.E.
 Telephone No.: GREENWICH 3711/2

CLUB NOTES

THIRD visitors of the season are Luton Town, the club against whom Charlton chalked up their biggest ever League victory away from home last season. It was last February and the score was 6-1, Dennis Edwards being the biggest scorer with three goals. What a great day that was for Charlton! The big contingent of Charlton fans who visited the Bedfordshire town to see the match were indeed proud supporters. Many of them declared that it was the finest exhibition of football they had ever seen from a Charlton side.

The home fixture with Luton, however, way back in September, provided a very different picture. Without a win in four home matches, an over-anxious Charlton did everything but score, and then in a breakaway, a shot from Luton's Turner was stopped by Willie Duff. The ball spun along the goal-line and was kicked away by Johnny Sewell, but a linesman signalled a goal, and that was that. Charlton lost 1-0 after having Stuart Leary off the field for 25 minutes in the first half with a badly gashed knee.

A MIXTURE

Luton were a mixture of good and moderate last season. They rose to fourth position in the League at one period, but subsequently had a dull spell and they finished the season with the same number of points as Charlton (39).

One of the oldest clubs in the country, Luton were founded in 1885 and became the first all-professional side in the south of England. They were one of the original nine members of the old Southern League, and first visited The Valley as long ago as 1922.

Sixteen years were spent in the old Third (Southern) Division of the League, and many readers will recall the feat of Luton centre-forward, J. Payne, who scored ten goals against Bristol Rovers in April, 1936—the biggest individual score ever in a League game.

FIRST TIME RELEGATED

Luton advanced to the First Division in 1955, and when they lost their place in top company in 1960 that was the first time the club had ever been relegated.

For a couple of years, Luton were managed by old Charlton stalwart Sam Bar-

tram, hero of some 800 matches for this club during his long service as goalkeeper between 1934 and his retirement in 1956. It was a coincidence that another former manager of Luton Town, Mr. Dally Duncan, should have played against Bartram in the Cup final at Wembley in 1946. Duncan was at outside-left for Derby County, while Sam, of course, was in goal for Charlton.

LOST AT HOME

In their first match of the season, Luton lost (0-1) at Bury, the only goal resulting from a penalty kick. They were away again on the following Wednesday and managed a point in a 2-2 draw. Then last Saturday, before their own supporters, Luton lost (2-3) to Rotherham United. They fought back after being two goals down, two goals by Jack Lornie putting them in again with a chance, but McIlmoyle's goal for Rotherham settled the issue.

SHOCK AT CHELSEA

The 5-0 shock at Chelsea last Saturday was a severe blow to our hopes. It was not so much the score sheet, though—goodness knows—that was bad enough, but the several injuries to our players. Brian Kinsey, Brian Tocknell and Fred Lucas were all at The Valley on Sunday morning for treatment. Dennis Edwards, too, was still having treatment for the bad shoulder injury he suffered at Sunderland a few days previously.

Kinsey's injury undoubtedly made a big difference to the result. Before Chelsea had scored, Brian took possession from a throw-in by Michael Bailey and made for goal. As Chelsea goalkeeper Peter Bonetti rushed out to cover, Kinsey headed the ball on past the goalkeeper, and just as it was entering the net full-back McCreadie dashed up and cleared off the line.

KINSEY IN COLLISION

Kinsey and Bonetti collided heavily, and our left-winger went down like a log. He was taken off for treatment, returned to the field for a spell, but was in such pain that he went off and remained in the dressing room until the second half. Apart from "nuisance value", Brian was useless for the rest of the match. Naturally, the loss of such a hard-working player was badly missed.

OUR VISITORS

Here are brief pen pictures of some Luton players :

RON BAYNHAM (goalkeeper). Was secured from the Southern League club, Worcester City and has been at Luton since 1951. An England international who also has England "B" and Football League honours.

BRENDAN McNALLY (full-back). Can play in either full-back position. Came from Shelbourne, the League of Ireland club, and joined Luton in 1956. Eire international.

JOHN BRAMWELL (full-back). Born at Wigan and was secured from Everton in October, 1950.

ROBERT MORTON (wing-half). A Luton local who has been with the club since 1948. Holds England "B" and many other representative honours. Has experience as a centre-forward, as well as wing-half.

JOHN GROVES (wing-half). Won Derbyshire schoolboy honours and was signed by Luton when only 15.

TERRY KELLY (centre-half). Born at Luton. Played for Hitchin Town before joining Luton in 1950. Was originally a wing-half.

DAVID PACEY (wing-half). Another Luton born player. Signed for the club in 1956. Played for the England Under 23 team against Germany and Italy, and also has F.A. XI honours.

HARRY WALDEN (outside-right). Joined Luton from Kettering in January last year and stepped straight into the League team. Made 34 League and Cup appearances last season.

GORDON TURNER (centre or inside-forward). Born at Hull and went to Luton as a wing-half but found his true position in the forward line. Has English League and F.A. XI honours. Luton's leading scorer in eight of the last nine seasons.

JACK LORNIE (centre-forward). Born at Aberdeen and joined Luton from Leicester City as an inside-forward. Was soon converted to the centre spot.

ALWYN McGUFFIE (wing-half or inside-forward). Signed professional for Luton in September, 1954. Was a wing-half until Luton recognised his ability to go through and have a shot at goal.

TOM McKECHNIE (inside-forward). Born at Glasgow and joined Luton from the Scottish Rob Roy club in 1961. A consistent first team performer last season.

JAMES FLEMING (outside-left). Joined Luton from Partick Thistle when Joe McBride was transferred in November, 1960. Was previously with Kirkintilloch.

Chelsea built up a two-goals lead while Kinsey was off. They gained all the confidence they needed, and chased all the harder, Blunstone in particular was a big thorn in Charlton's side on the left wing.

But there were not five goals difference between the sides. Though handicapped, our boys fought hard without getting the breaks and we are pretty confident that, but for injuries, Charlton would have made a close fight of it.

SAVED FROM PEACOCK

Charlton did not get many scoring chances. Dennis Edwards had a good shot saved, and Bonetti brought off a really splendid save from a header by young Keith Peacock that looked a certain goal. From a defensive point of view, Charlton did not match their display at Sunderland, due probably to the effect of injuries.

The team was : Wakeham, Sewell, Hewie, Tocknell, Hinton, Bailey, Matthews, Lucas, Edwards, Peacock, Kinsey.

RESERVES' REVIEW

Last Saturday was indeed a black day for Charlton. At The Valley in the morning our colts lost (0-1) to Arsenal, and in the afternoon the Reserves lost (2-3) to Birmingham City Reserves.

Leading 2-0 after about 20 minutes' play, our reserves seemed set for a victory to open their Football Combination programme, but the lack of experience at half-back against a Birmingham side which included four players of first-team standing, placed us at a big disadvantage.

COLT MADE BOTH

Jackie Kennedy, fit after a pulled muscle, was able to play for the first time this season, and it was Jackie who gave Charlton an early lead, thanks to an opening provided by 16 year-old colt centre-forward, Tony Weston. The second goal, scored by Johnny Platt, was also engineered by young Weston.

Birmingham's strength told in the second half. Despite the efforts of Charlton's young defenders, they drew level, and four minutes from the finish they got the all-important goal.

Our team was : Duff, Cordjohn, Ord. A. Putnam, P. Brown (a young amateur from the Bromley district playing his first-ever game in senior football), Stocks, Saunders, Kennedy, A. Weston, Glover, Platt.

BECOME A REFEREE

Ex-players and others interested in football can be quickly trained to become association referees. Even if you do not reside in the Woolwich district we can put you in touch with your nearest Referees' Society. Write for particulars to : Mr. N. Crockett, 78A, Bromley Road, London, S.E.6.

On Sunday, September 9th, Mr. Frank Hill and Dennis Edwards will be playing in a Charity Cricket Match at the Rectory Field in aid of the R.A.F. Benevolent Fund School, Vaprough Castle; this school is attended by sons of deceased R.A.F. Servicemen.

CATERING

at The Valley Bars
and Buffets is by

LOVETT

We can cater for you, too
ANYTIME — ANYWHERE

LOVETT CATERING CO. LTD.
2 PRINCES RISE, S.E.13 Lee Green 1361



TOBACCO AT
ITS BEST

WELL MADE
WELL PACKED

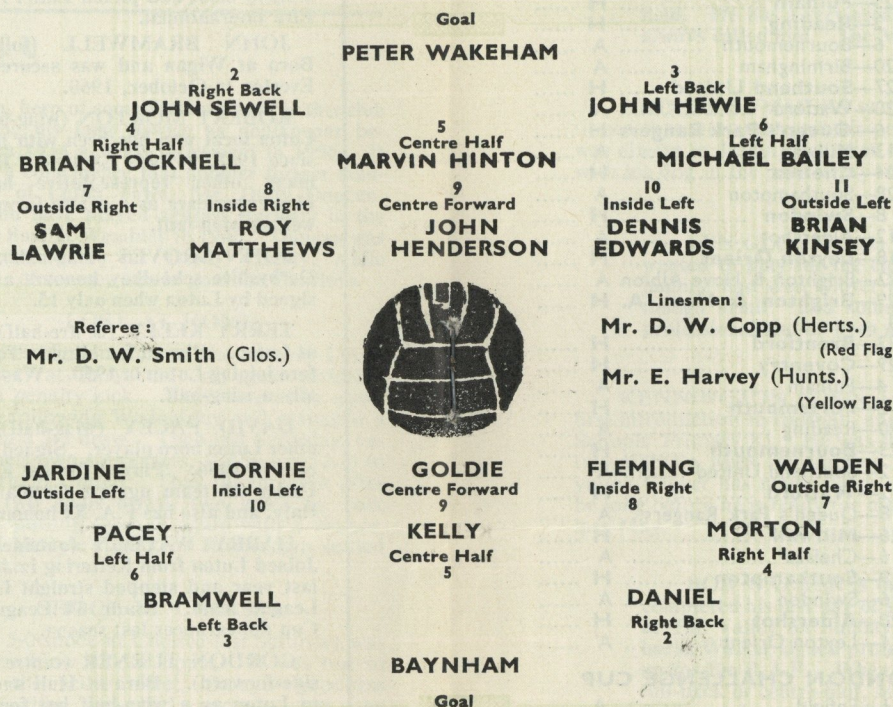
FOOTBALL LEAGUE (Division 2)

CHARLTON ATHLETIC v. LUTON TOWN

K.O. 3.00 p.m.

CHARLTON ATHLETIC

Colours : Red Shirts, White Collars, White Shorts



LUTON TOWN

Colours : White Shirts, Black Shorts

Any alteration in the above Teams will be broadcast before the start of the Match

ADDRESS

PRINTING COMPANY LIMITED

PERIODICAL & COMMERCIAL
PRINTERS

91-93 WADDON NEW ROAD
CROYDON - SURREY

Phone : CROydon 3182-3

AFTER THE MATCH
come
GREYHOUND RACING
at

CATFORD STADIUM
RACING EVERY
THURSDAY & SATURDAY

7.30 P.M.

Restaurant and Fully Licenced Bars

DURESCO

THE ORIGINAL WATER PAINT

MADE IN CHARLTON FOR
OVER A CENTURY

YOUR TRAIN HOME

Departure times of additional trains from Charlton Station after today's match are as follows : 4.48 p.m. to Slade Green (calling at all stations except Woolwich Dockyard) ; 4.54 p.m. to Ramsgate (fast from Woolwich Arsenal to Dartford) ; 4.44 p.m. to Charing Cross (fast to London Bridge) ; 4.50 and 4.59 p.m. to London Bridge (via Blackheath and calling at all stations). The above trains are in addition to the normal service.

SPECIAL BUSES TO THE VALLEY

Special London Transport buses for Charlton supporters will run on Saturday home League dates throughout the season.

Two there-and-back trips, serving 12 points in the south-east suburbs, will run at special bargain fares.

Starting point for the first trip is Sidcup bus garage, picking up at Sidcup High Street, Chislehurst War Memorial, Mottingham Road, Mottingham Station, and Eltham Church.

The second trip starts from Bromley bus garage, and has additional picking-up points at Bromley High Street, (Gaumont Cinema), Downham Way, Grove Park bus station, Baring Road, and Lee Green.

The return fares range from 4/- to 3/-, with half price for Under 14 fans.

FIXTURES AND RESULTS, 1962—63

FOOTBALL LEAGUE

1962	
Aug. 18—Swansea Town	H 2 2
" 22—Sunderland	A 0 1
" 25—Chelsea	A 0 5
" 28—Sunderland	H 2 2
Sept. 1—Luton Town	H
" 8—Southampton	A
" 12—Stoke City	A
" 15—Scunthorpe United	H
" 18—Stoke City	H
" 22—Bury	A
" 29—Rotherham United	H
Oct. 6—Walsall	H
" 13—Norwich City	A
" 20—Grimsby Town	H
" 27—Plymouth Argyle	A
Nov. 3—(1) Preston North End	H
" 10—Portsmouth	A
" 17—Cardiff City	H
" 24—(2) Huddersfield Town	A
Dec. 1—Middlesbrough	H
" 8—Derby County	A
" 15—Swansea Town	A
" 22—Chelsea	H
" 26—Newcastle United	H
" 29—Newcastle United	A
1963	
Jan. 5—(3)	
" 12—Luton Town	A
" 19—Southampton	H
" 26—(4)	
Feb. 2—Scunthorpe United	A
" 9—Bury	H
" 16—(5) Rotherham United	A
" 23—Walsall	A
Mar. 2—Norwich City	H
" 9—(6) Grimsby Town	A
" 16—Plymouth Argyle	H
" 23—Preston North End	A
" 30—(S.F.) Portsmouth	H
Apr. 6—Cardiff City	A
" 13—Huddersfield Town	H
" 15—Leeds United	H

Apr. 16—Leeds United	A
" 20—Middlesbrough	A
" 27—Derby County	H
May 4—(Final)	

FOOTBALL COMBINATION

1962	
Aug. 25—Birmingham	H 2 3
" 28—Brentford	A 0 8
Sept. 12—Coventry	A
" 19—Portsmouth	A
" 25—Fulham	H
Oct. 2—Reading	H
" 6—Bournemouth	A
" 20—Birmingham	A
" 27—Southend United	H
" 30—Watford	A
Nov. 6—Queen's Park Rangers	H
" 13—Millwall	A
" 24—Chelsea	H
" 28—Southampton	A
Dec. 8—Swindon	H
" 12—Aldershot	A
" 18—Leyton Orient	H
" 22—Brighton & Hove Albion	A
" 29—Brighton & Hove A.	H
1963	
Jan. 22—Brentford	H
" 29—Coventry	H
Feb. 4—Fulham	A
" 12—Portsmouth	H
" 20—Reading	A
" 23—Bournemouth	H
Mar. 2—Southend United	A
" 12—Watford	H
" 18—Queen's Park Rangers	A
" 26—Millwall	H
Apr. 6—Chelsea	A
" 9—Southampton	H
" 16—Swindon	A
" 20—Aldershot	H
May 1—Leyton Orient	A

LONDON CHALLENGE CUP

Oct. 1—Enfield	A
----------------------	---------

Copyright of The Football League—1962—1963

GOALSCORERS

FOOTBALL LEAGUE—Kinsey 2; Edwards 1; Tocknell 1.

FOOTBALL COMBINATION—Kennedy 1; Platt 1.

SOUTH-EAST COUNTIES LEAGUE—Peacock 3; R. Keeley 2; A. Weston 1; A. Allwright 1.

NEXT HOME MATCHES

SATURDAY, 8th SEPTEMBER

COLTS v.

PORTSMOUTH COLTS

South East Counties League

Kick-Off 3.00 p.m.

SATURDAY, 15th SEPTEMBER

v.

SCUNTHORPE UNITED

FOOTBALL LEAGUE

Kick-Off 3.00 p.m.

ECHOES ACROSS THE VALLEY

DAVID STOCKS, one of our promising young full-backs, is a part-time professional and works in the drawing office at Harvey's at Greenwich. Young David is also a very useful all-round cricketer, and we recently saw a nice reference to him in the Harvey Magazine. It stated that David had been presented with the "J. H. Hardstone" bat as the most promising young cricketer of the season. In addition to his batting, young Stocks it seems, is a very useful bowler. One of his earlier performances was his 8 for 42 for Harvey's 1st. XI against Dartford.

CHARLTON PLAYERS and officials were at the cricket match at Welling last Sunday. It was staged by Bexleyheath Sports Club who generously agreed that half the proceeds should go to the "Johnny Summers Memorial Fund". In the programme for the match, a nice tribute to the late Johnny Summers was written by Stuart Leary. It included these words: "Over the years, I came to look up to Johnny as the perfect gentleman both on and off the field. He was a very great clubman and was so admired by all the Charlton players that they always called him 'The Master', which was indeed a fitting title for him."

JOHNNY SUMMERS was a great lover of animals, and Stuart Leary, in his tribute, mentioned that stray cats and his pet dog were all part of the family he loved. A photo of his dog was always in Johnny's pocket on away trips, and he maintained that his best training was done with his dog in the park every morning.

LEN GLOVER was only 13 and small for his age when he first came to Charlton and wanted to play for the club. Mr. Joe Guymer, who assists with the training of Charlton's juniors, had seen Glover play for his school at Kennington and was convinced that the boy, though small "had something". Now, five years later, Glover is a full-time Charlton professional and as keen as ever to make the top grade in Charlton's colours.

KENNINGTON BORN, Len Glover played for Cowley Road School at centre-half as his first introduction to football, and he did so well that he was selected to captain the South London Schools' Primary XI. He was still at Kennington Secondary School when he attended The Valley two nights a week for training. Graduating through the Robins and colts teams at Charlton, young Glover has made steady development, both in football skill and physique, and it will not be long before he is ready for his big chance. He lives at Stockwell and signed professional forms last May.

BOB WALKER is the last of Charlton's national servicemen to leave the Forces. Bob completed his last day of service in the R.A.F. on Friday last week, and got back into training at The Valley on Sunday. A former Bishop Auckland and West Auckland amateur full-back, Walker signed professional for Charlton in the summer of 1960 and was quickly called up for the R.A.F. When he could obtain leave, Bob played for Charlton Reserves either at full-back or centre-half, but we are convinced that we have not yet seen the best of him on the field. A few weeks in full-time training will make a big difference to Bob, who is now married with a six-weeks old daughter, Julie.

MARVIN HINTON is very keen on small livestock. We hear that he has a number of rabbits and is contemplating keeping homing pigeons. Benny Fenton was the last Charlton player to keep a loft of racing pigeons. He had his share of winners, too.

KEITH PEACOCK, the 17 year-old who made his League debut at inside-left for Charlton at Sunderland recently after only a few weeks as a professional, got quite a surprise when he arrived at Roker Park with the team. Several north-country relatives were waiting to greet him and wish him luck. Though the Peacock family live at Barnehurst, Keith's father is a "Geordie" and a strong Newcastle United supporter. Now, of course, he cheerfully shares his football loyalties with Charlton.

BRIAN ORD, Charlton's reserve full-back, has just moved into the club house formerly occupied by the club's trainer, Mr. "Jock" Basford, and Brian and his wife are busy settling themselves in. They were married in May. Mr. Basford, by the way, has taken over the house overlooking The Valley which was built for the club trainer. He tells us that from one of the windows he has a fine view of the east side of the river and beyond.

AT INSIDE-LEFT in Charlton's colts team against Arsenal last Saturday was Mick Murray, a youngster who was introduced to the club by new professional Len Glover. They used to work together at Covent Garden market.

HALF - TIME SCORES

MATCHES FOR SATURDAY, 1st SEPTEMBER, 1962

First name opposite the letter represents the home team. W signifies match abandoned.
Key for to-day's matches is as follows :—

CLUBS		Half Time	CLUBS		Half Time
A	Bury.....		K	Sunderland.....	
	Scunthorpe United.....			Swansea Town.....	
B	Cardiff City.....		L	Burnley.....	
	Middlesbrough.....			Arsenal.....	
C	Grimsby Town.....		M	Fulham.....	
	Norwich City.....			Everton.....	
D	Huddersfield Town.....		N	Leyton Orient.....	
	Leeds United.....			West Ham United.....	
E	Plymouth Argyle.....		P	Tottenham Hotspur.....	
	Walsall.....			Manchester City.....	
F	Portsmouth.....		Q	Bradford.....	
	Derby County.....			Millwall.....	
G	Preston North End.....		R	Crystal Palace.....	
	Newcastle United.....			Brighton & H.A.....	
H	Rotherham United.....		S	Queens Park Rangers.....	
	Southampton.....			Swindon Town.....	
J	Stoke City.....		T	Gillingham.....	
	Chelsea.....			Aldershot.....	

CHARLTON'S FLOODLIGHTS

ARE BEING PAID FOR BY

CHARLTON DEVELOPMENT FUND

—an association of voluntary workers who are raising money for ground improvements at The Valley. The Association has its own headquarters at the rear of The Valley car park, with splendid facilities for social activity.

YOU CAN JOIN TODAY!

It costs only a BOB A WEEK for membership.

The FUND pays to MEMBERS

£300 WEEKLY IN PRIZES

WITH

£100 TOP ON SATURDAYS

COLLECTORS ARE REQUIRED EVERYWHERE. Call in at H.Q., SAWYER LODGE before you leave the ground to-day.

WE NEED MORE COLLECTORS ON MATCH DAYS.

Call at Sawyer Lodge half-an-hour before kick-off time. Special facilities.

If you want more details of the Development Fund Scheme, just post this form :

To the Secretary,

Charlton Athletic Supporters' Development Fund,

Sawyer Lodge, The Valley, Floyd Road, S.E.7.

Please send details of how I can become a member, and help Charlton.

NAME

(BLOCK LETTERS PLEASE)

ADDRESS