

NEWCASTLE UNITED FOOTBALL CLUB

ST. JAMES' PARK • NEWCASTLE

GROUND CAPACITY — 70,000
RECORD ATTENDANCE — 68,386



WE WELCOME TODAY—

LUTON TOWN

Saturday, 19th March, 1960 kick-off 3-0 p.m.

OFFICIAL PROGRAMME



FIXTURES for SEASON 1959-1960 . . .

FOOTBALL LEAGUE				CENTRAL LEAGUE			
1959				1959			
Aug. 22	Tottenham Hotspur	h	1 5	Aug. 22	Derby County	a	2 2
" 26	Birmingham City	a	3 4	" 25	Sheffield United	h	1 2
" 29	Manchester United	a	2 3	" 29	Manchester United	h	1 0
Sept. 2	Birmingham City	h	1 0	" 31	Sheffield United	a	2 4
" 5	Preston North End	h	1 2	Sept. 5	Liverpool	a	1 3
" 9	West Bromwich A.	a	2 2	" 9	West Bromwich A.	h	2 2
" 12	Leicester City	a	2 0	" 12	Preston North End	h	4 0
" 16	West Bromwich A.	h	0 0	" 16	West Bromwich A.	a	3 4
" 19	Burnley	h	1 3	" 19	Burnley	a	2 2
" 26	Leeds United	a	3 2	" 21	Sheffield Wednesday	a	1 2
Oct. 3	West Ham United	h	0 0	" 26	Leeds United	h	5 0
" 10	Nottingham Forest	h	2 1	Oct. 3	Bury	a	0 1
" 17	Fulham	a	3 4	" 10	Aston Villa	a	3 1
" 24	Bolton Wanderers	h	0 2	" 17	Stoke City	h	1 1
" 31	Wolverhampton W.	a	0 2	" 24	Manchester City	a	1 1
Nov. 7	Everton	h	8 2	" 31	Everton	h	1 2
" 14	(1) Blackpool	a	0 2	Nov. 7	Blackpool	a	0 0
" 21	Blackburn Rovers	h	3 1	" 14	Blackburn Rovers	h	1 3
" 28	Manchester City	a	4 3	" 21	Huddersfield Town	a	2 2
Dec. 5	(2) Arsenal	h	4 1	" 28	Bolton Wanderers	h	3 1
" 12	Luton Town	a	4 3	Dec. 5	Chesterfield	a	1 1
" 19	Tottenham Hotspur	a	0 4	" 12	Wolverhampton W.	h	4 0
" 26	Chelsea	a	2 2	" 19	Derby County	h	4 0
" 28	Chelsea	h	1 1	" 26	Barnsley	h	6 0
1960				" 28	Barnsley	a	3 1
Jan. 2	Manchester United	h	7 3	1960			
" 9	(3) Wolverhampton W.	h	2 2	Jan. 2	Manchester United	a	0 1
" 13	(replay) Wolverhampton W.	a	2 4	" 9			
" 16	Preston North End	a	2 1	" 16	Liverpool	h	0 1
" 23	Leicester City	h	0 2	" 23	Preston North End	a	2 2
" 30	(4)			" 30			
Feb. 6	Burnley	a	1 2	Feb. 6	Burnley	h	3 2
" 13	Leeds United	h	2 1	" 13	Leeds United	a	3 1
" 20	(5) West Ham United	a	5 3	Mar. 5	Stoke City	a	1 0
" 27	Arsenal	a	0 1	" 9	Aston Villa	h	2 0
Mar. 5	Fulham	h	3 1	" 14	Manchester City	h	7 2
" 12	(6) Bolton Wanderers	a	4 1	" 19	Everton	a	
" 19	Luton Town	h		" 23	Chesterfield	h	
" 26	(S.F.) Everton	a		" 26	Blackpool	h	
April 2	Blackpool	h		" 30	Bury	h	
" 9	Blackburn Rovers	a		April 2	Blackburn Rovers	a	
" 15	Sheffield Wednesday	h		" 9	Huddersfield Town	h	
" 16	Wolverhampton W.	h		" 16	Bolton Wanderers	a	
" 18	Sheffield Wednesday	a		" 18	Sheffield Wednesday	h	
" 23	Nottingham Forest	a		" 30	Wolverhampton W.	a	
" 30	Manchester City	h		May 7	(Final)		
May 7	(Final)						

These fixtures are the Copyright of the Football League Ltd. and are printed by their permission under Licence No. 2. They must not be reproduced in whole or part without permission of the Football League Ltd.

on the way
to St. James'
look out for the Sign . .

It's a
"Charlton"
House

BOLTON BROS. (SURGICAL SHOEMAKERS) LTD.

69a PERCY STREET
NEWCASTLE UPON TYNE 1

FIRST CLASS SHOE REPAIRS

RUNNING SHOES A SPECIALITY
Made to Measure

Open all day Saturday
Tel. 24892

NEWCASTLE UNITED DIRECTORS & OFFICIALS . . .

Newcastle United Football Club

St. James Park, Newcastle upon Tyne

Telephone : 2-1459 and 2-7028

Mr. W. E. HURFORD, Chairman

Mr. R. R. MACKENZIE, Vice-Chairman

Dr. R. RUTHERFORD

Mr. G. S. SEYMOUR

Mr. W. B. TAYLOR

ALD. WILLIAM McKEAG

Mr. R. J. RUTHERFORD

Mr. H. DAVIS

MANAGER : Mr. CHARLES MITTEN

SECRETARY : Mr. DENIS BARKER

F. A. CUP

WINNERS : 1910, 1924, 1932, 1951, 1952, 1955.

FINALISTS : 1905, 1906, 1908, 1911.

LEAGUE CHAMPIONS

1904-5 : 1906-7 : 1908-9 : 1926-27

COMMENT . . .

Newcastle United are going all out to finish near the top of the League and collect a good cheque for talent money. They certainly deserve to succeed for against Bolton Wanderers at Burnden Park they romped home 4-1 after giving a talent display that came near to matching the best ever seen from the crack Continental teams.

A word of credit, however, must be given to young John Mitten, son of Manager Mr. Charlie Mitten. This near 19 year old of little League experience fitted in well with the scheme of things and it was a result of his enterprise that United took an early lead. It was young John, too, who ended all hopes of Bolton saving a point when he netted again near the end.

United have proved themselves a terrific scoring machine this season and if they can maintain present form they should have the honour of being the highest scoring side in Division One when the curtain falls. They have to date netted 71 goals and only Tottenham, Manchester United and Wolves are ahead and not by any big margin.

The selection of Len White to lead the Football League attack against the Scottish League at Highbury on Wednesday has been worthily gained.

He was United's top scorer last season and certainly looks like maintaining the honour this season. Congratulations go out, also, to George Eastham who has well won his selection again for the England Under 23's side.

A good run then by United until the end of the season is on the agenda with yet another victory to celebrate this afternoon when they battle against the lowly placed Luton Town.

Daily Mail

North-East

Treasure Hunt

begins March 21st, 1960



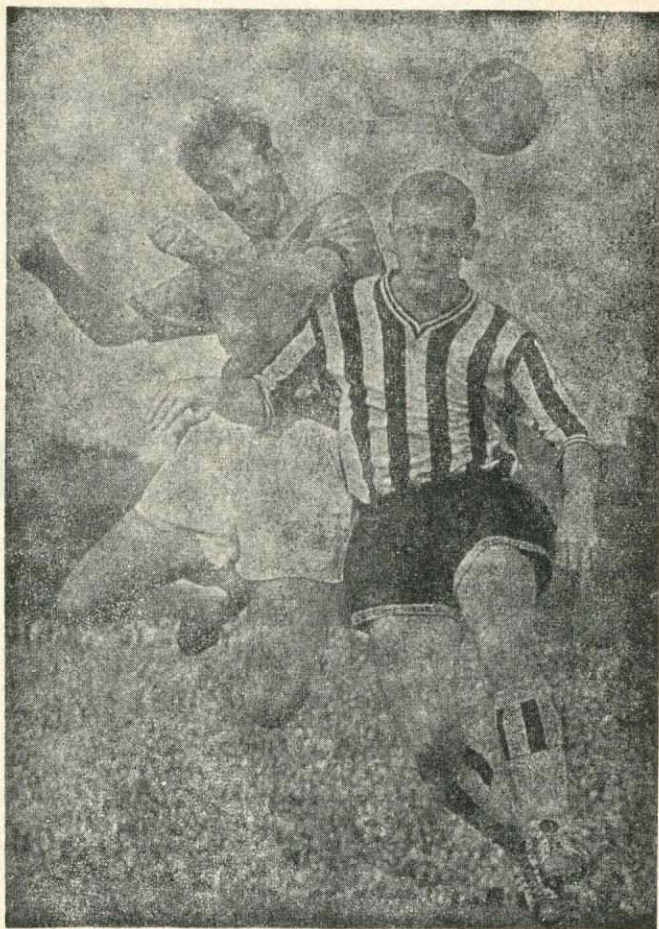
*Make sure of getting
your copy every day*

LEAGUE DIVISION 1.

RESULTS 1959-60.

(Compiled up to and including 16th March, 1960).

HOME CLUB	Arsenal	Birmingham	Blackburn Rovers	Blackpool	Bolton Wanderers	Burnley	Chelsea	Everton	Fulham	Leeds	Leicester City	Luton Town	Manchester City	Manchester United	Newcastle United	Nottingham Forest	Preston North E.	Sheffield Wed.	Tottenham H.	West Brom A.	West Ham United	Wolverhampton W.
ARSENAL	3-0	5-2	2-1	2-1	2-4	2-1	2-1	2-1	2-4	2-0	3-4	1-1	4-2	1-1	4-3	4-1	2-1	0-0	0-1	2-0	0-1	4-4
BIRMINGHAM	—	—	—	2-1	—	—	1-1	—	2-4	2-0	3-4	1-1	4-2	1-1	4-3	4-1	2-1	0-0	0-1	2-0	0-1	4-4
BLACKBURN ROVERS	1-1	2-1	—	1-0	1-0	3-2	—	3-1	4-0	—	—	—	2-1	1-1	—	1-2	1-4	3-1	1-4	3-2	6-2	0-1
BLACKPOOL	2-1	—	1-0	—	3-2	—	3-1	—	3-1	3-3	3-3	0-0	1-3	0-6	2-0	0-1	0-2	0-2	2-2	—	3-2	3-1
BOLTON WANDERERS	0-1	4-1	0-3	0-3	—	2-1	—	2-1	3-2	1-1	3-1	2-2	—	1-1	1-4	1-1	—	1-0	—	0-0	5-1	2-1
BURNLEY	—	3-1	1-0	1-4	4-0	—	2-1	5-2	—	0-1	—	—	4-3	1-4	2-1	8-0	2-1	—	2-0	2-1	1-3	4-1
CHELSEA	1-3	4-2	3-1	—	0-2	4-1	—	1-0	4-2	1-3	2-2	3-0	—	3-6	2-2	—	4-4	0-4	—	—	2-4	—
EVERTON	—	4-0	2-0	—	0-1	1-2	6-1	—	0-0	—	6-1	2-2	2-1	2-1	—	6-1	4-0	2-1	—	2-2	0-1	0-2
FULHAM	—	2-2	0-1	1-0	1-1	1-0	1-3	2-0	—	5-0	—	4-2	5-2	—	4-3	3-1	1-2	1-1	—	1-0	3-1	—
LEEDS UNITED	3-2	3-3	0-1	2-4	—	2-3	2-1	3-3	1-4	—	1-1	1-1	—	2-2	2-3	—	1-3	2-4	1-4	3-0	—	—
LEICESTER CITY	2-2	1-3	2-3	1-1	—	—	3-1	—	0-1	3-2	—	3-3	5-0	—	0-2	—	2-2	2-0	1-1	0-1	2-1	—
LUTON TOWN	0-1	—	—	0-1	0-0	1-1	1-2	2-1	4-1	0-1	2-0	—	1-2	—	3-4	1-0	1-3	0-1	1-0	0-0	—	1-5
MANCHESTER CITY	1-2	3-0	2-1	2-3	—	—	1-1	4-0	3-1	3-3	3-2	1-2	—	3-0	3-4	2-1	—	4-1	1-2	—	—	4-6
MANCHESTER UNITED	4-2	2-1	—	3-1	—	1-2	0-1	—	3-3	6-0	4-1	0-0	—	3-2	—	1-1	3-1	1-5	2-3	—	—	0-2
NEWCASTLE UNITED	4-1	1-0	3-1	—	0-2	1-3	1-1	8-2	3-1	2-1	0-2	—	—	7-3	—	2-1	1-2	—	1-5	0-0	0-0	—
NOTTS FOREST	0-3	0-2	2-2	0-0	2-0	—	3-1	1-1	2-2	4-1	1-0	2-0	1-2	1-5	—	—	2-1	1-3	1-2	3-1	—	—
PRESTON NORTH END	0-3	3-2	5-3	—	1-0	1-0	4-5	0-0	—	—	1-1	—	1-5	4-0	1-2	1-0	—	1-1	1-1	1-1	4-3	—
SHEFFIELD WEDNESDAY	5-1	—	3-0	5-0	—	0-2	1-1	2-2	1-1	—	—	2-0	1-0	—	—	0-1	2-2	—	2-1	2-0	7-0	2-2
TOTTENHAM HOTSPUR	3-0	0-0	2-1	—	0-2	1-1	—	3-0	—	1-4	1-2	—	2-1	4-0	2-1	0-1	4-1	—	2-2	2-2	5-1	—
WEST BROMWICH ALBION	—	—	—	2-1	1-1	0-0	1-3	—	2-4	3-0	5-0	4-0	2-0	3-2	2-2	2-5	4-0	—	1-2	—	3-2	0-1
WEST HAM UNITED	—	3-1	—	1-0	1-2	2-5	4-2	2-2	—	1-2	3-0	3-1	4-1	1—	3-5	4-1	2-1	—	1-2	4-1	—	3-2
WOLVERHAMPTON WAND.	3-3	2-0	3-1	1-1	0-1	2-0	3-1	—	9-0	4-2	0-3	—	4-2	3-2	2-0	—	3-3	3-1	—	3-1	—	—



ALWAYS UP WITH THE PLAY...



THE SPORTS CENTRE
OF THE NORTH

Stan Seymour

N/c.) Ltd.

Phone 27732

•
For all Sports Requisites :

FOOTBALL RUGBY
GOLF TENNIS
CRICKET Etc.

•
1 Market Street

Newcastle upon Tyne

TENNIS REPAIRS AND RE-STRINGS
Executed on the premises—24 hour service

FOR THE BEST
IN LUXURY
TRAVEL... .

Hire Your Coach From

R. ARMSTRONG

Motor Coach Proprietor

11 FENKLE STREET
(OFF CLAYTON STREET)

NEWCASTLE-on-TYNE

Telephone 23918 - 24772

29, 33, 39 & 41 SEATER COACHES AVAILABLE

NEXT HOME MATCHES

Central League

Kick-off 3-0 p.m.

Newcastle Utd. Res. v Chesterfield Res.

Wednesday, 23rd March, 1960

Central League

Kick-off 3-0 p.m.

Newcastle United Res. v Blackpool Res.

Saturday, 26th March, 1960

CITY SCHOOL OF MOTORING LEADS THE WAY

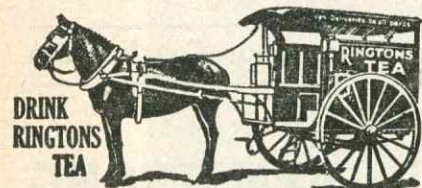
PAY AS YOU LEARN

EXPERT TUITION BY M.S.A. AND R.A.C. INSTRUCTORS

Let us help you realize your ambition. So successful is our instruction that 75% of our Pupils have passed the Test at first Attempt.

11a, HAYMARKET, NEWCASTLE.

Tel. 24102



BARBECUE EXPRESS LTD.

HAYMARKET, NEWCASTLE

Feeling peckish? Then call in after the match for a hot roast chicken or some delicious chicken roll sandwiches.

HALF-TIME SCOREBOARD

NUMBER ONE

NUMBER TWO

A	BIRMINGHAM	BOLTON WAN.
B	BURNLEY	ARSENAL
C	CHELSEA	BLACKPOOL
D	LEEDS UN.	MANCHEST'R C
E	LEICESTER C.	WOLVES
F	MANCHEST'R U.	NOTTS FOR.
G	PRESTON N.E.	SHEFFIELD W.
H	TOTTENHAM	FULHAM
J	WEST BROM.	EVERTON
K	WEST HAM UN.	BLACKBURN R.
L	BRISTOL C.	LINCOLN C.
M	DERBY CO'	BRISTOL ROV.
N	MIDDLESBRO'	SWANSEA T.
P	ROTHERHAM	SUNDERLAND

A	CARDIFF C.	PORTSMOUTH
B	CHARLTON A.	LEYTON O.
C	LIVERPOOL	HUDDERSFIELD
D	PLYMOUTH AR.	IPSWICH T.
E	SCUNTHORPE	ASTON VILLA
F	SHEFFIELD UN.	BRIGHTON H.
G	MANSFIELD	CHESTERFIELD
H	SHREWSBURY	CRIMSBY T.
J	BRADFORD	DARLINGTON
K	CARLISLE UN	MILLWALL A.
L	CREWE ALEX.	WORKINGTON
M	CRYSTAL PAL.	GATESHEAD
N	HARTLEPOOLS	DONCASTER
P	Everton Res.	N'castle U. Res.

A WINNING LINE . . .

"King George IV"

OLD SCOTCH WHISKY

THE TOP NOTCH OF SCOTCH



ELECTRO PLATING

ESTABLISHED OVER 80 YEARS

PHONE 24281

BOYDELL'S

OF PERCY STREET

Cycles — Mopeds — Musical Instruments — Meccano — Hornby and Dinky Toys
Tri-ang Toys and Railways

SERVICE AGENTS

Newcastle United

Colours—Shirts: Black and White Stripes

Shorts: Black

(Goal)
Harvey

2
(Right-back)
Keith

3
(Left-back)
McMichael

4
(Right-half)
Bell

5
(Centre-half)
Stokoe

6
(Left-half)
Mitchell, R.

7
(Outside-right)
Hughes

8
(Inside-right)
Eastham

9
(Centre-forward)
White

10
(Inside-left)
Allchurch

11
(Outside-left)
Mitten, J.

Referee:

Mr. A. W. LUTY,
Leeds.



Linesmen:

Mr. W. Keyworth, Leeds.
Yellow Flag

Mr. V. James, York.
Red Flag

Noake
(Outside-left)
11

Cummins
(Inside-left)
10

McBride
(Centre-forward)
9

Turner
(Inside-right)
8

Bingham
(Outside-right)
7

Brown
(Left-half)
6

Pacey
(Centre-half)
5

Morton
(Right-half)
4

Hawkes, K.
(Left-back)
3

Dunne
(Right-back)
2

Baynham
(Goal)

Colours—Shirts: White

Shorts: Black

Luton Town

Band: Burradon and Weetslade Colliery Workmen's Prize Band



HOME OR AWAY—
MORE POPULAR
THAN EVER!

A BLUE STAR BEER
Brewed and bottled by
The Newcastle Breweries Ltd.

Soccer Quiz

1—The youngest player ever seen in (a) an F.A. Cup Final and (b) a semi-final both represented England in the same position. Who were they?

2—Name four reasons other than the weather and F.A. Cup-ties why Football League fixtures in recent years have been postponed.

3—Which four clubs since the war have played as many as 24 consecutive Football League matches without a victory?

4—Which current Football League club manager made his first two appearances as a club player with different clubs, neither of which is in the competition now?

5—Who is the only post-war Football League player who has been twice sent off when figuring in matches overseas?

6—Which was the quickest individual century of First Division goals any player ever completed?

7—What ranks as the highest aggregate season's attendances ever drawn by any Football League club outside the First and Second Divisions?

8—Only one club has lost an F.A. Cup match and figured in the final tie at Wembley in the same season. How did it happen?

9—Who was the only player since the war to have been sent off in a Football League club's public practice match?

Answers to Quiz

1—(a) Clifford Bastin, who was 18 years and 43 days old when he was in Arsenal's winning team against Huddersfield Town at Wembley on April 26, 1930; (b) James Mullen, who was 16 years and 78 days when he figured in a semi-final with Wolves against Grimsby Town on March 25, 1939. Both played for England at outside-left.

2—Asian flu, the Munich disaster (Manchester United), the St. Leger (Doncaster Rovers), and the last General Election.

3—Crewe Alexandra (30), Southport (27), Norwich City (25), and Portsmouth (24).

4—Edwin Perry (Southend United). He played in his first two Football League matches with Merthyr Town (1927-28) and Thames (1930-31).

5—William McAdams, the Irish international forward. Playing with Manchester City on German Tours, he was sent off at Wuppertal in 1956 and at Berlin in August, 1959.

6—That completed by David Halliday for Sunderland on March 10, 1928, his 100th First Division goal being scored in his 101st match.

7—Those of Hull City when winning the Third North Championship in 1948-49. Aggregate attendances for their 21 home League games were 777,022—an average of 37,001.

8—In season 1945-46 Charlton Athletic lost the second leg of their third round tie at Fulham by 2-1 after having won the first leg by 3-1 at home. In the final they lost to Derby County.

9—John Morris, who was sent off in a Leicester City trial match on August 17th, 1957, and subsequently suspended for 14 days.

LEAGUE PLACINGS

Compiled up to and including 12th March, 1960

LEAGUE DIVISION I

	P	W	D	L	F	A	Pts
Tottenham	...	33	18	9	6	72	39 45
Wolves	...	32	19	4	9	79	55 42
Burnley	...	31	18	4	9	68	46 40
Sheffield Wed.	...	32	15	7	10	57	38 37
West Brom.	...	33	13	10	10	61	48 36
Bolton Wand.	...	33	14	8	11	43	41 36
Newcastle Utd.	...	33	15	5	13	71	64 35
Preston N.E.	...	32	13	9	10	58	59 35
Fulham	...	33	14	7	12	63	65 35
Blackpool...	...	33	13	7	13	50	54 33
Arsenal	...	32	13	6	13	56	62 32
West Ham Utd.	...	33	14	4	15	64	70 32
Manchester Utd.	...	32	12	7	13	73	63 31
Blackburn	...	32	14	3	15	53	57 31
Chelsea	...	33	11	8	14	63	75 30
Leicester City	...	32	10	9	13	53	62 29
Everton	...	33	10	8	15	58	59 28
Notts Forest	...	33	11	6	16	42	64 28
Manchester City	...	32	12	3	17	65	69 27
Birmingham	...	32	9	7	16	47	61 25
Leeds Utd.	...	32	8	8	16	53	78 24
Luton	...	33	7	9	17	38	58 23

LEAGUE DIVISION IV

	P	W	D	L	F	A	Pts
Walsall	...	33	23	6	4	76	36 52
Torquay	...	35	22	3	10	66	41 47
Notts County	...	36	21	4	11	86	46 56
Millwall	...	37	15	14	8	64	49 44
Crystal Palace	...	36	16	9	11	75	51 41
Stockport	...	37	16	7	14	49	47 39
Exeter	...	35	16	7	12	64	56 39
Watford	...	33	17	5	11	64	51 39
Gillingham	...	34	15	8	11	57	52 38
Rochdale	...	35	15	7	13	49	46 37
Aldershot	...	37	15	5	17	67	65 35
Workington	...	36	11	13	12	57	48 35
Bradford	...	34	12	10	12	55	57 34
Chester	...	37	12	10	15	49	55 34
Crewe Alex.	...	35	13	7	15	60	71 33
Northampton	...	33	13	7	13	61	53 33
Darlington	...	35	13	7	15	46	55 33
Carlisle	...	35	13	6	16	36	48 32
Doncaster	...	35	12	7	16	44	58 31
Barrow	...	34	10	8	16	59	68 28
Southport...	...	34	8	10	16	35	65 26
Gateshead...	...	35	8	7	20	45	67 23
Oldham	...	35	6	10	19	30	60 22
Hartlepool	...	36	8	5	23	47	87 21

LEAGUE DIVISION II

	P	W	D	L	F	A	Pts
Cardiff	...	34	21	9	4	80	47 51
Aston Villa	...	33	20	8	5	73	28 48
Middlesbrough	...	33	15	8	10	76	54 38
Huddersfield	...	33	15	8	10	58	40 38
Sheffield Utd.	...	32	15	8	9	55	42 38
Rotherham	...	33	14	10	9	53	49 38
Ipswich	...	32	16	5	11	66	47 37
Liverpool	...	32	15	7	10	66	52 37
Charlton	...	33	13	11	9	69	70 37
Bristol Rovers	...	33	14	9	10	63	68 37
Leyton	...	32	11	11	10	62	52 33
Stoke	...	33	13	7	13	60	64 33
Swansea	...	32	12	8	12	65	65 32
Lincoln	...	33	12	6	15	59	63 30
Scunthorpe	...	33	10	9	14	45	56 29
Sunderland	...	33	9	10	14	45	55 28
Brighton	...	33	9	9	15	51	62 27
Derby	...	31	10	5	16	45	57 25
Portsmouth	...	33	7	10	16	48	64 24
Plymouth	...	34	7	9	18	49	83 23
Bristol City	...	32	7	5	20	44	77 19
Hull City	...	33	6	6	21	33	70 18

CENTRAL LEAGUE

	P	W	D	L	F	A	Pts
Manchester Utd.	32	22	7	3	98	50	51
Sheffield Wed.	...	35	20	6	9	53	47 46
Liverpool	...	34	16	12	6	76	45 44
Sheffield Utd.	...	31	17	7	7	59	40 41
Wolves	...	33	16	8	9	69	47 40
Stoke	...	31	15	8	8	57	40 38
Blackburn	...	32	16	6	10	59	49 38
Derby	...	34	14	7	13	64	57 35
West Brom A.	...	35	15	4	13	65	50 34
Burnley	...	31	14	5	12	51	48 33
Preston	...	31	10	12	9	54	31 32
Newcastle Utd.	...	31	12	8	11	63	43 32
Bury	...	31	10	11	10	53	44 31
Everton	...	28	11	8	9	54	45 30
Aston Villa	...	33	11	6	16	70	59 28
Manchester City	...	30	12	4	14	50	61 28
Chesterfield	...	31	7	9	17	36	68 23
Huddersfield	...	31	7	11	13	38	64 25
Blackpool...	...	33	7	7	19	55	73 24
Bolton	...	32	7	8	17	38	73 22
Leeds	...	32	5	6	21	40	92 16
Barnsley	...	31	6	4	21	29	94 16

United's Opponents this afternoon

Luton Town F.C.

R. Baynham (Goalkeeper). In his seventh season with the club. Secured from Southern League club Worcester City. Has represented England on several occasions including their matches versus Denmark, in Copenhagen, Ireland and Spain. Played for the Football League v. League of Ireland on two occasions and also for England 'B' v. Yugoslavia 'B'.

S. Dunne (Right Back). Born in Limerick, Eire. Came to Luton from Shelborne F.C. in May, 1950. Has played for his Country on several occasions and was recently chosen to captain Eire v. Denmark.

J. Groves (Right Half). Son of Arthur Groves, the old Derby Co. inside right. Won Derbyshire schoolboy honours and signed by Luton when only 15. Either inside or wing forward, has this season been converted to a wing half.

G. Turner (Inside Right). Came to Luton as a wing half upon his demobilisation from the Navy in 1950, but found his true position at inside right. In season 1954-55 broke the club's individual scoring record since their promotion to the Second Division with 37 goals. Was again the club's leading marksman last season. Represented the English League v. the Scottish League in October, 1955.

R. Morton (Centre Forward). Local born. Has been with the club since 1946. Played for England 'B' v. Switzerland 'B', the Football Combination v. Dutch XI, and also for the Football Association v. the Army. Was chosen as reserve for England v. Ireland at Wembley in November, 1955. A brilliant wing half who has made several appearances at centre forward. Was a member of the F.A. party which toured South Africa in the summer of 1956.

A. Brown (Inside Left). Secured from Blackpool for a five figure fee in February 1957. A Scottish international who made his debut for the town at Leeds scoring the winning goal. Was very unlucky, missing two Cup Finals through injury while playing with Blackpool.

G. Cummins (Inside Forward). An Irishman from Dublin. Signed for Ever-

ton in 1950 and it was from the Merseyside club that Luton secured him for a big fee in 1953. A brilliant ball player. Has already played for Eire on several occasions.

J. Adam (Outside Left). Signed from Spennymoor United in June, 1953. Can get quickly off the mark and always a potential danger. Has been watched by the Scottish selectors.

H. McCreddie (Centre Forward). A seventeen year old recently secured from Accrington Stanley for a fee stated to have been in the region of £6000.



BILLY BINGHAM

Billy Bingham the former Sunderland player is still going great guns and in fact is one of the best wingers in the game—a great opportunist that United will have to mark closely.

Before the Match . . .

or after the Match

you'll enjoy a meal at

The Eldon Grill

GREY STREET Phone 2-0101

or

The Pineapple Grill

NUN STREET Phone 2-0026

**BOTH RESTAURANTS FULLY
LICENSED**

Proprietors . F. M. Laing & Co. Ltd.

Before the Game . . .

During the Game . . .

After the Game . . .

Carricks

are always at your service

**RESTAURANTS - SHOPS
CAFES - SNACK BARS
THROUGHOUT THE NORTH-EAST**

Head Office

47 Grey Street, Newcastle upon Tyne, 1

Travel by Train to the Matches

CHEAP DAY TICKETS
issued to and from many stations

*Regular Diesel and Electric
Train Services*

Ask at stations and agencies for details

***BRITISH RAILWAYS**

For the finest

Car and Motor Cycle Service

IN THE NORTH

St. Andrew's Motors

LIMITED

Efficient Maintenance & After-Sales Service

Gallowgate, Newcastle. Tel. 28333

★

**SIMPSON STREET BLYTH Telephone 1031
51 PARKGATE DARLINGTON Telephone 4272
47 ROKER AVE SUNDERLAND, Telephone 70213**

FIRST TEAM APPEARANCES AND GOAL SCORERS

	Appearances	Goals		Appearances	Goals
Simpson	3	-	Hughes	25	5
Keith	23	-	Eastham	35	18
McMichael	35	-	White	33	23
Whitehead	10	-	Allchurch	34	13
Franks	4	-	McGuigan	1	-
Scouler	31	-	Harvey	23	-
Bell	33	4	Scott	5	2
Stokoe	24	-	Mitchell, R.	14	-
Taylor	5	-	Tait	5	1
Mitchell, S.	9	-	Ferguson	1	-
Malcolm	1	-	Hale	1	2
Luke	19	2	Gilfillan	1	-
McKinney	1	-	Own Goals	-	3
Heslop	9	-	Mitten, J.	2	2

FIRST TEAM ATTENDANCES TO DATE

HOME	AWAY
v. Tottenham Hotspur	v. Birmingham City
v. Birmingham City	v. Manchester United
v. Preston North End	v. West Bromwich Albion
v. West Bromwich Albion	v. Leicester City
v. Burnley	v. Leeds United
v. West Ham United	v. Fulham
v. Nottingham Forest	v. Wolverhampton Wanderers
v. Bolton Wanderers	v. Blackpool
v. Everton	v. Manchester City
v. Blackburn Rovers	v. Luton Town
v. Arsenal	v. Tottenham Hotspur
v. Chelsea	v. Chelsea
v. Manchester United	v. Wolverh'ton W. (Cup replay)
v. Wolverhampton W. (Cup)	v. Preston North End
v. Leicester City	v. Burnley
v. Leeds United	v. West Ham United
v. Fulham	v. Arsenal
	v. Bolton Wanderers

LEAGUE AND CUP LEADING GOALSCORERS . . .

DIVISION ONE

29	VIOLETT (Manchester Utd.)
27	GREAVES (Chelsea)
25	SMITH (Tottenham Hotspur)
24	MURRAY (Wolverhampton)
23	McCOLE (Leeds 4 for Bradford C.)
22	WHITE (Newcastle)
21	CONNELLY (Burnley)
21	JONES (Tottenham Hotspur)

DIVISION TWO

31	CLOUGH (Middlesbrough)
24	PACE (Sheffield United)
23	JOHNSTON (Leyton Orient)
23	PHILLIPS (Ipswich)
22	HITCHENS (Aston Villa)
22	McPARLAND (Aston Villa)
21	CARTER (Plymouth Argyle)

DIVISION THREE

40	REEVES (Southampton)
34	STOKES (Bradford City)
27	ROWLEY (Shrewsbury)
25	HUNT (Grimsby Town)
24	FRANCIS (Brentford)
22	O'BRIEN (Southampton)
21	BEDFORD (Queens Park Rangers)
21	KING (Colchester Utd.)

DIVISION FOUR

34	HOLTON (Watford)
29	UPHILL (Watford)
26	LLEWELLYN (Crewe Alex.)
24	ALLAN (Bradford)
24	NEWSHAM (Notts. County)
22	BOND (Torquay)
21	RICHARDS (Walsall)

Do you live at . . .

NEWCASTLE

SOUTH SHIELDS

WHITLEY BAY

NORTH SHIELDS

BLYTH

HEXHAM

then visit . . .

T. & G. ALLAN

(Newcastle) LTD.

for

STATIONERY

FANCY GOODS

JEWELLERY

GREETING CARDS

and

GIFTS for every occasion

**To Factories, Works, Shipyards
Builders' Merchants, Plumbers, etc.**



**SCRAP
URGENTLY
WANTED**

**BRASS · COPPER · LEAD · ALUMINIUM
ZINC · CAR BATTERIES**

We Specialise in Collecting
ALL CLASSES OF SCRAP METAL
including

**CAST IRON BORINGS
ALL KINDS OF HEAVY SCRAP
LIGHT SCRAP CUTTINGS
CRUSHED AND BUSHY TURNINGS**

Use Our Transport and Labour—Save Yours

20-ton Weigh Bridge on Premises

**QUICK TURN ROUND
SPOT CASH**

W.F.&J.R.SHEPHERD Ltd.

SCRAP METAL ^{IRON & STEEL} MERCHANTS

BREWERY YARD, off BYKER BANK

NEWCASTLE UPON TYNE

Open Saturday until 12.30

Telephone 656210