

LEAGUE CHAMPIONS 1954-55



# Chelsea Football Club

Stamford Bridge Grounds, London SW6

FOOTBALL LEAGUE—DIVISION I

SEASON 1959-60

**CHELSEA**

v

**LUTON TOWN**

Saturday, 5th March, 1960

Kick-off 3 p.m.



Official Programme

6d

The right of admission to grounds  
is reserved.



# 

### 

© Football League Ltd., 1960

1959	Opponents	Venue	F.A.
Aug. 22	PRESTON N.E. ...	HOME	4 4
" 26	Manchester United ...	Away	1 0
" 29	Leicester City ...	Away	1 3
Sept. 2	MANCHESTER U. ...	HOME	3 6
" 5	BURNLEY ...	HOME	4 1
" 9	Birmingham City ...	Away	1 1
" 12	Leeds United ...	Away	1 2
" 16	BIRMINGHAM CITY ...	HOME	4 2
" 19	WEST HAM UNITED ...	HOME	2 4
" 26	Fulham ...	Away	3 1
Oct. 3	West Bromwich Albion ...	Away	3 1
" 10	BOLTON WANDERERS ...	HOME	0 2
" 17	Luton Town ...	Away	2 1
" 24	EVERTON ...	HOME	1 0
" 31	Nottingham Forest ...	Away	1 3
Nov. 7	BLACKBURN ROVERS ...	HOME	3 1
" 14	Manchester City ...	Away	1 1
" 21	ARSENAL ...	HOME	1 3
" 28	Wolverhampton W. ...	Away	1 3
Dec. 5	SHEFFIELD WED. ...	HOME	0 4
" 12	Blackpool ...	Away	1 3
" 19	Preston North End ...	Away	5 4
" 26	NEWCASTLE UNITED ...	HOME	2 2
" 28	Newcastle United ...	Away	1 1

1960

Jan. 2	LEICESTER CITY ...	HOME	2 2
" 9	(3) BRADFORD ...	HOME	5 1
" 16	Burnley ...	Away	1 2
" 23	LEEDS UNITED ...	HOME	1 3
" 30	(4) ASTON VILLA ...	HOME	1 2
Feb. 6	West Ham United ...	Away	2 4
" 13	FULHAM ...	HOME	4 2
" 24	WEST BROM. A. ...	HOME	2 2
" 27	Sheffield Wednesday ...	Away	1 1
Mar. 5	LUTON TOWN ...	HOME	.....
" 12	(6) Everton ...	Away	.....
" 19	BLACKPOOL ...	HOME	.....
" 26	(S.F.) Blackburn Rovers ...	Away	.....
Apr. 2	MANCHESTER CITY ...	HOME	.....
" 9	Arsenal ...	Away	.....
" 15	TOTTENHAM H. ...	HOME	.....
" 16	NOTTINGHAM FOR. ...	HOME	.....
" 18	Tottenham Hotspur ...	Away	.....
" 23	Bolton Wanderers ...	Away	.....
" 30	W'HAMPTON W. ...	HOME	.....

May 7 F.A. CUP FINAL

(3), (4), (6), (S.F.)—indicates F.A. Cup dates

### 

1959	Opponents	Venue	F.A.
Aug. 16	Ajax ...	Amsterdam	3 2
Oct. 19	Ashford ...	...	7 2
Nov. 11	Entente Royale Anversoise ...	Antwerp	4 1
" 16	British Olympic XI ...	W'Ham	4 1
Dec. 2	ATLETICO BILBAO ...	HOME	5 3
" 8	Atletico Bilbao ...	Bilbao	0 1
Feb. 16	Sittingbourne ...	Away	8 3

**On Sale Today**  
**CHELSEA**  
**HANDBOOK 1959-60**  
 Price One Shilling and Sixpence

### 

© Football League Ltd., 1960

1959	Opponents	Venue	F.A.
Aug. 22	Charlton Athletic ...	Away	1 3
" 29	BRISTOL CITY ...	HOME	3 1
Sept. 5	Leicester City ...	Away	2 0
" 12	SOUTHEND UNITED ...	HOME	7 1
" 19	West Ham United ...	Away	1 2
" 26	BOURNEMOUTH & B. ...	HOME	5 1
Oct. 3	SOUTHAMPTON ...	HOME	2 1
" 10	Nottingham Forest ...	Away	5 0
" 17	PORTSMOUTH ...	HOME	2 1
" 24	Arsenal ...	Away	2 1
" 31	BRIGHTON & H.A. ...	HOME	0 0
Nov. 7	Swansea Town ...	Away	3 0
" 14	IPSWICH TOWN ...	HOME	3 2
" 21	Luton Town ...	Away	2 1
" 28	LEYTON ORIENT ...	HOME	1 1
Dec. 5	Portsmouth ...	Away	2 1
" 12	NOTTINGHAM FOR. ...	HOME	1 2
" 19	CHARLTON A. ...	HOME	4 0

### 

The records which you hear today have been kindly provided by and can be obtained from Dawson Bros., 16 Fulham High Street, S.W.6.

1960

Jan. 2	Bristol City ...	Away	2 1
" 16	LEICESTER CITY ...	HOME	3 1
" 23	Southend United ...	Away	4 0
Feb. 6	WEST HAM UNITED ...	HOME	0 1
" 13	Bournemouth & Boscombe ...	Away	1 1
" 27	ARSENAL ...	HOME	3 2
Mar. 5	Brighton & Hove Albion ...	Away	.....
" 12	SWANSEA TOWN ...	HOME	.....
" 19	Ipswich Town ...	Away	.....
" 26	LUTON TOWN ...	HOME	.....
Apr. 2	Leyton Orient ...	Away	.....
" 9	Tottenham Hotspur ...	Away	.....
" 18	TOTTENHAM H. ...	HOME	.....
" 23	Birmingham City ...	Away	.....
Undated	BIRMINGHAM CITY ...	HOME	.....
"	Southampton ...	Away	.....

### 

1959	Opponents	Venue	F.A.
Oct. 12	West Ham United ...	Away	4 0
" 21	MILLWALL ...	Hendon	4 0
" 28	CRYSTAL PALACE ...	Hendon	3 3
Nov. 4	Portsmouth ...	Away	1 2
" 11	Charlton Athletic ...	Away	3 4
Dec. 2	Millwall ...	Away	5 0
" 10	Tottenham H. ...	Away	7 2
1960			
Jan. 27	Watford ...	Away	5 1
Feb. 3	CHARLTON A. ...	Hendon	8 1
" 10	Crystal Palace ...	Away	3 1
" 17	WEST HAM UNITED ...	Hendon	1 1
" 24	TOTTENHAM H. ...	Hendon	2 1
Mar. 9	WATFORD ...	Hendon	.....
" 30	PORTSMOUTH ...	Hendon	.....



League Champions 1955

## 

FOUNDED 1905

CLUB COLOURS:

Shirts: Royal Blue (White Collars). Shorts: White.  
 Stockings: Navy Blue, Blue and White Tops.

Registered Address: STAMFORD BRIDGE GROUNDS, FULHAM ROAD, LONDON, S.W.6. [FUL 5545]

PRESIDENT: The Right Hon. Earl Cadogan, M.C.

BOARD OF DIRECTORS:

J. H. Mears (CHAIRMAN), C. J. Pratt (VICE-CHAIRMAN),  
 L. J. Mears, L. R. Withey, J. B. Mears.

MANAGER: E. J. Drake. SECRETARY: J. Battersby. TRAINER: J. Oxberry

## 



IN welcoming Luton today we remember many happy associations in the past, which include our signing from them of the never-to-be-forgotten "Ten Goal" Joe Payne and popular Bill Hughes and Hugh Billington. They are managed now by their old player and ex-England Centre-half, Syd Owen, this being his first full season as manager.

With the coming of lighter evenings our game assumes its busiest aspect, and many matches have to be played off which have been postponed through Cup Ties and bad conditions. Everyone who wishes will be able to get in one or two extra matches in a week, which illustrates the boon of floodlighting in modern times.

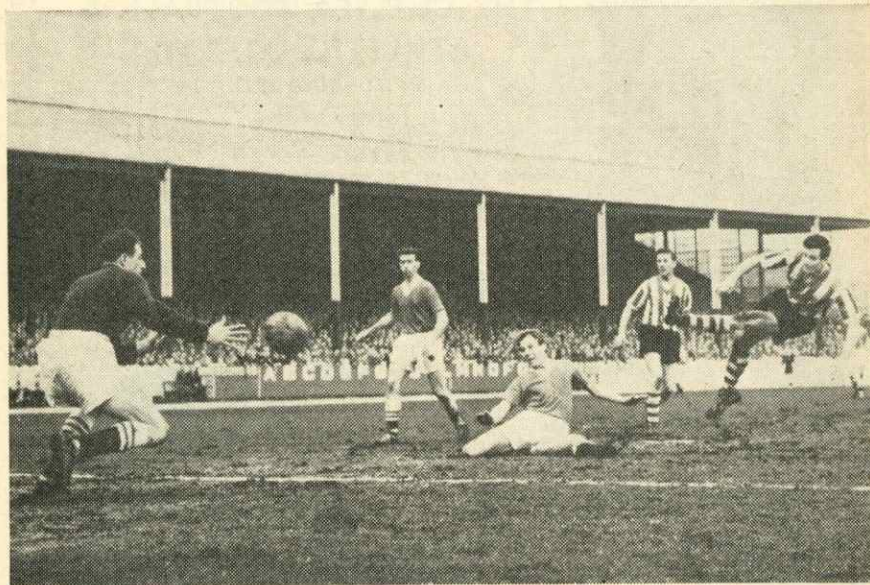
Take last Tuesday for instance. Those of you who like to see a good fight, saw, in the semi-final of the Southern Junior Floodlight Cup v. West Ham, our youngsters overcome a two goal deficit and finish after extra time with a victory of 3-2. This performance was all the more creditable when one realises that, with the exception of Bobbie Tambling and Peter Bonetti, all will be eligible to take part in Youth matches next season. In the final of this event we have the pleasure of meeting Reading, coached by our ex-player Bobbie Campbell; details later. You will also want to be reminded that next Monday we meet Aston Villa in the 5th Round of the F.A. Youth Cup, the team who have already beaten Wolves on their way to this tie. I cannot let the opportunity pass without a word of praise for our first team who gained a very good point at Sheffield Wednesday. As a matter of fact we had them worried and hanging on at the finish.

Two points over Arsenal here on Saturday last, keeps us ahead with two points lead in the Combination over our rivals, Tottenham.

Although we possess four professional Goalkeepers, on Friday last I found myself with only two of them able to play in the four teams we had to field on Saturday. Bill Robertson had the misfortune to dislocate a finger in the match v. West Bromwich Albion on Wednesday and Peter Bonetti was confined to bed with a chill. However, our difficulties were solved by liaison with the Army Football Association authorities who made it possible for Private Green, R.A.M.C. to take his place between the posts at Guildford with our Metropolitan League side.



## HONOURS EVEN IN AWAY GAME



Here we were unlucky—the ball rebounded from Reg Matthews after this shot, and Fantham scored the goal.



Frank Blunstone hits the ball past Springett to score our goal.

## WITH SHEFFIELD WEDNESDAY



A fine save here—Matthews dives to take the ball off the head of Froggatt after a Wilkinson centre.



Another fine save—Springett takes the ball away as Ron Tindall goes to head.



## OUR VISITORS TODAY

THE next few weeks would be among the most vital in the history of Luton Town, whom we welcome to Stamford Bridge this afternoon. At the moment the Hatters are bottom of the table, and a substantial improvement will be needed in the remainder of the campaign if they are to stave off relegation.

All things considered the Luton rear-guard has been reasonably well up to standard, and the goals conceded represent a lower figure than is usually associated with a struggling side.

It is in attack that the Kenilworth Road side has fallen short and Syd Owen, the club's former centre-half who captained them in the Cup Final last term, has faced many problems in his first season as manager.

Last week he signed Joe McBride, the Wolves' reserve centre-forward, and naturally hopes that the newcomer will boost the scoring potential of the front line when he has settled down. Time, however, is against them, particularly as McBride has yet to prove himself in First Division football.

The Hatters have been unable to strike anything like consistent form on their own ground, and this, coupled with the disappointing return from away fixtures, has contributed to their present perilous position.

Their victories on opponents' grounds have been gained at Manchester City, whom they defeated 2-1 at Maine Road in mid-September, and at Highbury, where they gave one of their best displays of the season in recording a 3-0 win over Arsenal on Boxing Day.

In addition they have drawn five away fixtures, leaving them with six defeats, of which the heaviest has been at West Bromwich, who scored four times without reply.

Some idea of the lack of striking power in the Hatters' attack is shown by the fact that they have failed to find the net at all on nine occasions, and have been restricted to a single goal in a further eleven games. Their highest total in any match is four, obtained in a home game with Fulham in January.

Several changes have been made in the composition of the side compared with that which did duty when we won 2-1 at Kenilworth Road on October 17th. At left-back Alan Daniel took over from Ken Hawkes a fortnight later, though he was

himself replaced by Brendan McNally last month. Allan Brown has switched from the leadership of the attack to right-half, the position previously filled by Bob Morton, who has subsequently been utilised mainly at inside-forward. Terry Kelly is now back at centre-half, with John Groves, who played there in the earlier meeting, now operating at inside-left in place of George Cummins. The left wing berth has been particularly troublesome and six players have done duty there so far.

Goalkeeper Ron Baynham's work has been one of the fairly bright spots in the dismal outlook for the Hatters. In many games Baynham has shown the form which won him England honours in 1955.

Another consistent defender has been Eire international right-back Seamus Dunne, who will shortly complete ten years with Luton, whom he joined from Shelbourne in 1950. Dunne is the last remaining ever-present in the side, which says much for his standard of performance in view of the many changes made.

McNally is also an Irishman from Dublin, and was with Shelbourne before moving to Luton in the summer of 1956. For a time he was kept in the background by the consistency of Dunne, though he took over from him midway through last season and kept his place to the end of the campaign, which included an appearance in the Cup Final team.

Although Luton were defeated at Wembley last season, Allan Brown at least had the satisfaction of playing in the Final, after twice missing that honour through injury while with Blackpool. A native of Fife, Brown joined Blackpool from East Fife in 1950 and was transferred to Luton in February, 1957.

Kelly is a local product who was signed from Vauxhall Motors in 1951, and played at wing-half before settling down in his present berth. Kelly learnt much from his predecessor Syd Owen, and has put that knowledge to good use in doing his best to help the Hatters climb out of trouble.

The departure of Reg Pearce to Sunderland in 1957 gave Pacey the chance to show what he could do in Luton's League side. He made his debut on Christmas Day that year, and soon established himself as an automatic choice. Luton-born, Pacey was previously with Hitchin Town before signing for

the Hatters a short time before being called upon for senior duty.

Had the rest of the attack shown form comparable with that of Billy Bingham, Luton would almost certainly be in a less difficult position at present. The Irish international has missed only one game this term, when playing for his country, and is the club's leading marksman with twelve goals.

A native of Belfast, Bingham is in his second season at Kenilworth Road, having been signed from Sunderland, with whom he spent nine years after leaving Glentoran.

Gordon Turner, a Yorkshireman from Doncaster, has been Luton's top scorer in five of the last six seasons, the exception being last term, when he was not able to command a regular place. Now he has made a come-back, and his partnership with Bingham has been showing considerable promise recently. Turner signed for the Hatters in 1950 on leaving the Navy.

Newcomer McBride made a big reputation with Kilmarnock, and Wolves paid about £12,000 to take him to Molineux last November. McBride, however, was never able to get into the Wolves' First Division side, and when Luton made an offer for him he was ready to move. McBride celebrated his first appearance for the Hatters last week with the second goal in a 2-0 home win over Leicester City.

This term John Groves has played in all three positions in the middle line, and more recently has been operating at inside-left. Born in Derby, Groves has been with the Hatters since he left school.

Although best known as an inside-forward, George Cummins has previously played on the left wing, to which he was recalled last week. An Eire international from Dublin, Cummins was with Everton before joining Luton in 1953. He has never been known as a prolific marksman, and has netted only once in his 21 League appearances this term.

## The Talk of Stamford Bridge

TERRY VENABLES took another step towards the England team for the 1960 Olympics when he was selected for the eleven which meets Germany on Dulwich Hamlet's ground this afternoon. Terry was selected for left-half, although he normally plays right-half in our teams. His selection for this match also means that he is in the 'twenty' from which the side will be chosen for the second-leg match against Republic of Ireland in Dublin on 13th March.

\* \* \*

British Railways announce the following excursion arrangements for our League match against Everton on Saturday, 12th March, tickets (32/6d. each return) can be obtained from Euston and are available by the following trains:

Leave Euston 8.20 a.m.

Arrive Liverpool (Lime Street) 12.50 p.m.

Leave Liverpool (Lime Street) 5.35 p.m. or 12.5 a.m. (Sunday).

Arrive Euston 9.55 p.m. or 6.15 a.m. (Sunday).

\* \* \*

Joe Baker, the Hibernian and England centre-forward, was excused the England Under-23 match against Scotland at Ibrox Park last Wednesday, as his club is still involved in a cup-tie against Dundee. In his absence Bobby Charlton moved to centre-forward and Jimmy Greaves was brought back into the England team at inside-right. At the time of his selection Jimmy was suffering from a very heavy cold and missed our Sheffield Wednesday game, but he was fit for the game on Wednesday.

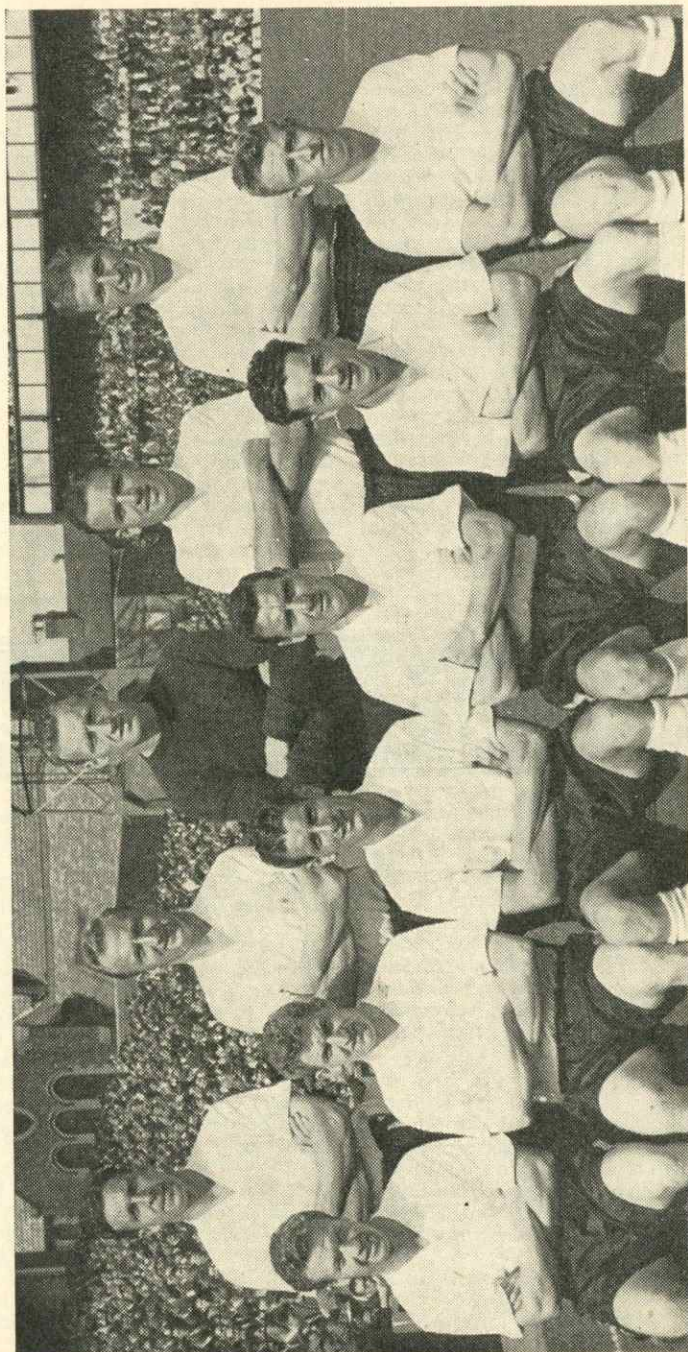
\* \* \*

Bill Robertson, who had been brought back into our eleven for the League matches against Fulham and West Bromwich Albion, had the bad luck to dislocate a finger in the second match, and was thus also missing against the Wednesday, Reg Matthews coming back into our team after his short rest.

(continued on page 14)



# LUTON TOWN 1959-60



Standing: R. Morton, S. Dunne, R. Baynham, F. Hawkes, D. Pacey,  
Seated: W. Bingham, J. Kilgannon, J. Groves, A. Brown, G. Cummins, A. Gregory.

## CHELSEA 3

Colours—Shirts: Royal Blue (White Collars). Shorts: White.  
Stockings: Navy Blue, Blue and White Tops.

1. (Goal)  
**Matthews**

2. (Right-back)  
**Sillett (J.)**

3. (Left-back)  
**Sillett (P.)**

4. (Right-half)  
**Anderton**

5. (Centre-half)  
**Mortimore**

6. (Left-half)  
**Crowther**

7. (Outside-right)  
**Brabrook**

8. (Inside-right)  
**Brooks**

9. (Centre-forward)  
**Tindall /**

10. (Inside-left)  
**Greaves //**

11. (Outside-left)  
**Blunstone**

Referee:  
Mr. J. FINNEY  
(Hereford)



Linesmen:  
Mr. D. SMITH  
(Swindon)  
[Red Flag]  
Mr. E. W. OWERS  
(Salisbury)  
[Yellow Flag]

**Cummins**  
11. (Outside-left)

**Groves**  
10. (Inside-left)

**McBride**  
9. (Centre-forward)

**Turner**  
8. (Inside-right)

**Bingham**  
7. (Outside-right)

**Pacey**  
6. (Left-half)

**Kelly**  
5. (Centre-half)

**Brown**  
4. (Right-half)

**McNally**  
3. (Left-back)

**Dunne**  
2. (Right-back)

**Baynham**  
1. (Goal)

## LUTON TOWN 0

Colours—Shirts: White. Shorts: Black. Stockings: Black, White Tops.



## THIS AND THAT

By TRUE BLUE

# Days of Trial and Triumph for the Luton Team and Individual Players

BY their constitution, the big football competitions—League arrangements especially—don't encourage the development of a lot of sympathy as between one club and another. Put rather crudely, it is roughly a case of every club for itself, and the approach one of strict neutrality.

So when I scribble a hearty welcome to Luton Town, and wish those associated with the club the best of luck I am being personal rather than official. Let it be confessed, therefore, that for some reason or other—for several reasons as a matter of fact—I have a soft spot for the club which has its home in the town which straw hats helped to make famous.

Among the obvious reasons for good wishes is the memory of a gallant and sometimes surprisingly successful effort which those responsible for Luton Town have made against the odds. Here we can squeeze in a little sentiment collectively.

While we were throwing our hats in the air as a sign of rejoicing over Chelsea winning the top class championship, the followers of Luton were greeting the rise of their pet club to the highest class for the first time. In gaining second place to Birmingham City at the final Second Division reckoning in 1955 Luton were concerned in a triple finish of which there is no carbon copy in the story of promotion races.

The three top clubs had an equal number of points. Luton were second by goal-average reckoning, and the club which has been in the limelight this season to an unusual extent—Rotherham United—were third. That big day for Luton hung on a very slender thread—just the luck of the game.

## All the Way to Wembley

There have been other occasions when Luton have been concerned in highlight experiences. We can come right up to date—to appearance in the last Cup Final. Never previously had the club got even as far as the semi-final, but they battled bravely to the last round. Defeat was their fate, but the supporters of Luton,

like those of Chelsea at an earlier date, probably felt that it was better to have been there and lost than never to have been there at all.

In that straw hat final the Luton fellows did not play as I have seen them on other occasions. Even so they went near to giving us an extra half-hour for our money.

Connected with that day of days for Luton was another record of sorts—a personal one. A couple of evenings prior to the final tie I was present at another big occasion for Syd Owen, captain of the Luton side. He received the trophy awarded by the football writers to the man they had voted as the footballer of the year.

This stalwart centre-half, and faithful servant of the club for more than a decade, hung up his football boots after receiving his losers medal, and thus ended his career in the serious playing sense on the top note. Immediately afterwards he took over as manager. Friend Syd wouldn't be alone if, in the subsequent months, he has come to the conclusion that playing the game is at least as easy as managing a football club.

Now, as the League table shows, he has a full-sized job ahead—that of keeping the club in the top class. Possibly he knows, and may be you know, that if he manages to do this Luton will hang on to a record. That reference is to the fact that of all the top class clubs, Luton stand alone as the only one which, up to now, has never been relegated to the Second Division. It's a grim fight, this league business.

## Saving the Shillings

It is well known that in the story of the Luton Town club there haven't been many—not enough really—of those occasions when the compact arena at Kenilworth Road has not been wholly adequate. Cash hasn't always been plentiful, but in the board room are a couple of quaint relics in the shape of postal orders which were considered too valuable to be cashed.

One is for the sum of a shilling and eightpence—the amount received as the club's portion of the gate receipts from a match at the ground of the Thames club. Nearby is a framed letter which speaks for itself, referring to 1935. Here is the wording on it:

"I went to see the replayed Cup-tie with Chelsea, and happened to be one of those carried in with the crowd when a rush on the gates was made. So I did not pay. I am now enclosing my entrance money."

That is the sort of supporter who helps to keep football clubs going. There is a postscript to that letter which reads:

"I don't suppose this will either make or break the club, but I felt I ought to send it."

That make or break expression is a constant reminder of the days when, without straining the point unduly, shillings mattered. There is a claim, well supported, that the club was the first in the southern part of the country to embrace professionalism. Seventy years ago it was recorded in the minutes that three particular players should be paid five shillings per week. One of them, whose name doesn't matter, thought it reasonable that in addition to the five bob he should be given travelling expenses. The same minute book records that the reply to the request was to the effect that the people then running the club could not see their way to spending any more shillings.

## A Record First Attempt

Among the founder members of the Southern League, Luton met with a measure of success which fired ambition. On the second application the club was elected to the Second Division of the Football League. In that sphere extra money was required for travelling, and a visit to far-away Middlesbrough put the tin hat on it—the cash wasn't in the kitty.

Back to the Southern League the club went. Jumping the years we come to a red-letter day for another Luton player. In 1936 Joe Payne, given the centre-forward berth for the first time in the premier team, scored ten goals in a game against Bristol Rovers. The figure still has pride of place as the highest ever in a League game.

At the end of that season Luton were runners-up to Coventry City, but as promotion was limited to one club Luton had to wait till the following season before returning to the Second Division.

The championship of the South section was won with a full total of one hundred and three goals, of which Payne contributed more than half.

Through the years, players who reached international rank helped Luton to establish a claim as being among the giant-killers in the Cup competition. In 1933 they travelled on to the sixth round, but were beaten at that full of hope stage by Everton, the eventual winners of the trophy.

Last season a few over thirty thousand people were squeezed into their ground for the sixth round—a specially happy day for Allan Brown, who scored the winning goal against Blackpool, the club which had received Luton's biggest transfer fee. The sum paid for him is now said to have been exceeded by the amount which new centre-forward Joe McBride has cost—quite a lot of shillings.

## LUTON TOWN

Ground: Kenilworth Road.  
Colours: Shirts: White. Shorts: Black.  
Stockings: Black, White Tops.  
Attendance Record 28,433 v. Arsenal (Cup) 8th March, 1952.  
F.A. Cup Runners-up: 1959.  
Division II Runners-up: 1955.  
Division III (South) Champions: 1937.

## Chelsea v. Luton Town Past League Results

Season	Home	Away	Season	Home	Away
1955-56	0-0	2-2	1957-58	1-3	2-0
1956-57	4-1	4-0	1958-59	3-3	1-2
			1959-60	Today	2-1

## F.A. Cup

1926-27	Round 3 (Home)	...	...	4-0
1934-35	Round 3 (Home)	...	...	1-1
	Replay (Away)	...	...	0-2

## SUMMARY

	P.	W.	D.	L.	F.	A.	Pts.
League: Home	4	1	2	1	8	7	4
Away	5	3	1	1	11	5	7
F.A. Cup ...	3	1	1	1	5	3	—
Total.....	12	5	4	3	24	15	—

## The Matches Last Season

Saturday, 18th October.  
Lost to LUTON TOWN (Away) 1-2. Half-time: 1-1.  
Referee: Mr. H. V. A. Stott (Boston, Lincs.).  
Attendance: 24,864.  
Team: Matthews; Sillett (P.), Sillett (J.); Mortimore, Scott, Saunders; Brabrook, Greaves, Tindall, Stubbs, Block.  
Scorer: Tindall.  
Saturday, 7th March.  
Drew with LUTON TOWN (Home) 3-3. Half-time: 2-1.  
Referee: Mr. A. K. Collinge (Altrincham).  
Attendance: 29,175.  
Team: Matthews; Sillett (P.), Whittaker; Mortimore, Scott, Crowther; Brabrook, Greaves, Tindall, Nicholas, Blunstone.  
Scorers Brabrook, Nicholas, Blunstone.



# Tables, Appearances & Goalscorers

## FOOTBALL LEAGUE—DIVISION I

	P	W	D	L	F	A	Pts
Tottenham	31	8	4	3	33	18	5
Wolverhampton	31	12	2	2	45	20	6
Burnley	30	11	0	4	41	23	6
Sheffield W.	31	9	6	1	37	12	6
Preston N.E.	31	7	5	3	29	24	6
Bolton W.	30	8	4	3	25	18	6
Fulham	31	10	2	4	34	19	4
West Brom.	30	7	2	5	31	18	5
Manchester U.	31	8	3	4	37	24	4
Newcastle U.	31	7	3	5	31	24	6
Blackburn R.	31	10	2	4	33	23	4
West Ham U.	30	10	0	5	39	26	4
Arsenal	31	7	3	6	29	30	5
CHELSEA	31	5	4	6	33	38	5
Nottingham F.	31	7	4	5	25	23	4
Manchester C.	30	8	2	5	39	26	4
Blackpool	30	7	4	2	26	28	3
Leicester City	31	5	5	5	25	24	4
Everton	31	9	3	4	36	16	0
Leeds U.	30	3	4	7	24	32	5
Birmingham	29	6	4	4	24	20	2
LUTON T.	30	5	2	9	18	23	2

### Appearances

SILLETT (P.)	31	WHITTAKER	7
BRABROOK	30	ALLEN	5
ANDERTON	29	McMILLAN	5
GREAVES	29	SHELLITO	5
MATTHEWS	29	CLISS	4
BLUNSTONE	27	NICHOLAS	4
LIVSEY	23	TAMBLING	4
MORTIMORE	23	GIBBS	3
CROWTHER	19	HARRISON	3
TINDALL	14	BLOCK	2
SILLETT (J.)	12	CORTHINE	2
BROOKS	11	ROBERTSON	2
COMPTON	8	BRIDGES	1
SCOTT	8	T. VENABLES	1

Goalscorers: Greaves 24, Livsey 9, Brabrook 4, Sillett (P.) 4, Tindall 4, Brooks 3, Blunstone 3, Harrison 2, Allen 1, Anderton 1, Gibbs 1, Tambling 1, Defender 2. Total 59.

## SOUTH-EAST COUNTIES LEAGUE

	P	W	D	L	F	A	Pts
Arsenal	26	16	4	6	97	30	26
CHELSEA	20	16	3	1	91	15	25
Crystal Palace	22	13	4	5	60	36	30
Leyton Orient	19	12	1	6	71	47	25
Brentford	23	11	3	9	42	44	25
Charlton Athletic	25	12	0	13	68	78	24
Portsmouth	23	10	3	8	55	42	23
Fulham	23	9	5	9	85	71	23
West Ham United	22	9	4	9	67	48	22
Luton Town	22	10	2	10	65	65	22
Millwall	19	7	7	5	29	26	21
Tottenham Hotspur	20	6	4	10	45	68	16
Bexleyheath	23	5	3	15	32	95	13
Watford	20	2	3	15	28	68	7
Southend	19	1	0	18	19	121	2

### Appearances

C. SHAW	19	D. ROUND	4
G. BOLLAND	19	T. VENABLES	4
T. MORE	18	R. DRAKE	3
A. MURRAY	17	R. HANLEY	3
M. ROBINSON	17	M. SCOTTING	3
BONETTI	16	J. SMITH	2
D. HARKNESS	16	A. BARKER	2
A. HARRIS	15	A. CRITCHFIELD	1
R. SEAMAN	15	G. DOCKREE	1
D. BUTLER	12	M. HARNESSE	1
R. CORNEY	12	M. KELLY	1
A. CAIRA	12	R. LENNOX	1
D. GILLING	8	P. MANNING	1
WATER	5	A. WELLS	1
TAMBLING	5	W. WAITES	1

Goalscorers: Shaw 25, Bolland 24, Harkness 14, Murray 12, Tambling 6, Robinson 3, Hanley 2, Cairra 1, Harris 1, Defender 3. Total 91.

## FOOTBALL COMBINATION—DIV. I

	P	W	D	L	F	A	Pts
CHELSEA	24	17	3	4	59	23	37
Brighton & Hove Albion	26	13	10	3	50	27	36
Tottenham Hotspur	24	16	3	5	62	33	35
Leyton Orient	24	10	10	4	47	38	30
Bournemouth & B'combe	24	9	11	4	38	27	29
West Ham United	26	11	5	10	46	62	27
Arsenal	25	12	2	11	47	34	26
Charlton Athletic	24	11	3	10	50	49	25
Birmingham City	25	10	3	12	52	44	23
Portsmouth	26	9	5	12	47	43	23
Leicester City	23	11	1	11	49	51	23
Bristol City	24	9	4	11	47	43	22
Luton Town	26	7	7	12	42	58	21
Ipswich Town	21	7	5	9	41	52	19
Nottingham Forest	25	6	6	13	36	51	18
Swansea Town	26	6	5	15	38	54	17
Southend United	27	6	5	16	26	70	17
Southampton	24	5	6	13	29	52	16

### Appearances

ROBERTSON	21	BLOCK	11
WHITTAKER	19	SILLETT (J.)	11
HARRISON	18	CUNNINGHAM	10
BRIDGES	17	SHELLITO	8
GIBBS	17	HOLTON	7
McMILLAN	16	TINDALL	6
NICHOLAS	16	TAMBLING	5
COMPTON	15	ALLEN	5
CLISS	14	LIVSEY	3
CORTHINE	14	MORTIMORE	2
SCOTT	13	BONETTI	2
T. VENABLES	13	SMART	1

Goalscorers: Bridges 11, Gibbs 10, Nicholas 8, Harrison 6, Allen 5, Block 5, Cliss 5, Corthine 4, Livsey 2, Tindall 2, Tambling 1. Total 59.

## METROPOLITAN LEAGUE

	P	W	D	L	F	A	Pts
Luton Town	27	18	2	7	76	47	38
CHELSEA	26	15	4	7	75	35	34
Canterbury City	25	15	4	6	62	43	34
Arsenal	29	12	8	9	70	45	32
Headington United	28	13	4	11	59	72	30
Dunstable Town	21	12	3	6	60	42	27
Tonbridge	23	11	5	7	41	32	27
Fulham	23	11	5	7	59	51	27
Guildford City	27	9	9	9	61	53	27
Eastbourne United	24	8	10	6	54	40	26
Bedford Town	26	11	2	13	44	64	24
Newbury Town	21	10	3	8	57	36	23
West Ham United	26	10	3	13	67	70	23
Dartford	26	9	4	13	59	69	22
Windsor & Eton	21	10	1	10	49	48	21
Brighton & Hove Albion	28	8	5	15	48	68	21
D'edot Town	21	8	2	11	44	47	18
Haywards Heath	25	7	4	14	38	65	18
Hastings United	22	4	4	14	37	64	12
Crawley Town	23	3	2	18	30	80	8

### Appearances

WALL	25	BRIDGES	6
SMITH (K.)	24	CARTER	5
ABREY	24	TENNANT	5
BRADBURY	23	CONROY	3
LONG	20	CUNNINGHAM	3
SMART	18	A. HARRIS	3
HILLARY	17	CORTHINE	3
BLACKLEY	16	BONETTI	2
BERRY	15	ALLEN	2
BLOCK	13	D. BUTLER	1
DELLAR	13	CROWTHER	1
SHELLITO	10	G. GREEN	1
LEGG	8	E. AB IOWERTH	1
RAY	8	McMILLAN	1
TAMBLING	8	F. MORRIS	1
HOLTON	7	SLUMAN	1

Goalscorers: Smith (K.) 14, Abrey 11, Blackley 11, Black 10, Bradbury 6, Tambling 6, Wall 6, Bridges 3, Ray 3, Allen 2, Dellar 1, Shellito 1, Defender 1. Total 75.

## LONDON MID-WEEK LEAGUE

	P	W	D	L	F	A	Pts
CHELSEA	12	8	2	2	46	16	18
Charlton Athletic	10	8	0	2	31	20	16
Tottenham Hotspur	10	6	1	4	20	21	11
West Ham United	9	4	2	3	24	20	10
Portsmouth	8	3	2	3	13	15	8
Millwall	9	3	2	4	15	26	8
Crystal Palace	9	2	1	6	17	23	5
Watford	11	1	0	10	11	36	2

### Appearances

LONG	12	D. BUTLER	4
CONROY	11	BRIDGES	3
SMART	11	SLUMAN	3
SMITH (K.)	11	TAMBLING	3
DELLAR	10	CORTHINE	2
RAY	10	D. HARKNESS	2
WALL	9	A. HARRIS	2
HILLARY	8	HOLTON	2
CARTER	7	BERRY	1
LEGG	7	BLOCK	1
BRADBURY	6	M. CAMPBELL	1
ABREY	5	P. CHURCHILL	1

Goalscorers: Carter 7, Smith 7, Bradbury 6, Abrey 5, Ray 5, Bridges 5, Block 2, Corthine 2, Harkness 2, Hillary 2, Wall 2, Dellar 1. Total 46.

## LEADING GOALSCORERS

Division I	
VIOLETT (Manchester United)	29
GREAVES (Chelsea)	24
MURRAY (Wolverhampton Wanderers)	22
McADAMS (Manchester City)	20
WHITE (Newcastle United)	20
SMITH (Tottenham Hotspur)	20
CONNELLY (Burnley)	18
DOBING (Blackburn Rovers)	17
McCOLE (Leeds United)	17
LEGGAT (Fulham)	16
POINTER (Burnley)	15
ROBSON (Burnley)	15

## Match Summaries

### FOOTBALL LEAGUE

Wednesday, 24th February.  
Drew with WEST BROMWICH ALBION (Home) 2-2.  
Half-time: 2-1.  
Referee: Mr. S. Yates (Bristol).  
Attendance: 26,222.  
Team: Robertson; Sillett (J.), Sillett (P.); Anderton, Mortimore, Crowther; Brabrook, Brooks, Tindall, Greaves, Blunstone.  
Scorer: Greaves 2.

Saturday, 27th February.  
Drew with SHEFFIELD WEDNESDAY (Away) 1-1.  
Half-time: 1-1.  
Referee: Mr. J. Mitchell (Prescot).  
Attendance: 41,403.  
Team: Matthews; Sillett (J.), Sillett (P.); Anderton, Mortimore, Crowther; Brabrook, Brooks, Tindall, Gibbs, Blunstone.  
Scorer: Blunstone.

### OTHER MATCHES

Tuesday, 16th February.  
Beat SITTINGBOURNE (Away) 8-3. Half-time: 3-3.  
Team: Robertson; Sillett (J.), Sillett (P.); T. Venables, B. Bennett, Anderton; Brabrook, Brooks, E. Reynolds, Greaves, Blunstone.  
Scorer: Greaves 4, Reynolds 2, Brabrook, Blunstone.

## FOOTBALL COMBINATION

Saturday, 27th February.  
Beat ARSENAL (Home) 3-2. Half-time: 1-1.  
Team: Smart; Whittaker, Holton; McMillan, Scott, Compton; Block, Cliss, Livsey, Nicholas, Harrison.  
Scorers: Livsey 2, Nicholas.

## LONDON MID-WEEK LEAGUE

Wednesday, 17th February.  
Drew with WEST HAM UNITED (Hendon) 1-1.  
Half-time: 1-1.  
Team: Smart; D. Butler, Abrey; Dellar, Conroy, Long; Sluman, Bradbury, Bridges, Smith (K.), Tambling.  
Scorer: Bridges.  
Wednesday, 24th February.  
Beat TOTENHAM HOTSPUR (Hendon) 2-1. Half-time: 1-1.  
Team: Smart; D. Butler, Abrey; Dellar, Conroy, Long; Sluman, Ray, Bridges, Smith (K.), Tambling.  
Scorer: Bridges 2.

## METROPOLITAN LEAGUE

Monday, 8th February.  
Lost to FULHAM (Away) 1-2. Half-time: 0-1.  
Team: Bonetti; Hillary, A. Harris; Bradbury, Abrey, Long; Wall, Blackley, Bridges, Smith (K.), Tambling.  
Scorer: Blackley.  
Saturday, 13th February.  
Drew with ARSENAL (Away) 1-1. Half-time: 0-0.  
Team: Smart; Hillary, A. Harris; Dellar, Berry, Long; Wall, Blackley, Bridges, Smith (K.), Tambling.  
Scorer: Tambling.  
Saturday, 27th February.  
Drew with GUILDFORD CITY (Away) 0-0.  
Team: G. Green; D. Butler, Abrey; Bradbury, Berry, Dellar; Corthine, Blackley, Bridges, Smith (K.), Tambling.

## METROPOLITAN LEAGUE PROFESSIONAL CUP—Semi-final

Saturday, 20th February.  
Beat FULHAM (Home—Stamford Bridge) 7-0.  
Half-time: 5-0.  
Team: Smart; Shellito, A. Harris; Bradbury, Berry, Long; Wall, Blackley, Bridges, Smith (K.), Tambling.  
Scorers: Bridges 4, Blackley 3.

## SOUTH-EAST COUNTIES LEAGUE

Saturday, 13th February.  
Beat WATFORD (Hendon) 8-0. Half-time: 6-0.  
Team: M. Kelly; D. Round, D. Butler; R. Corney; T. More, M. Robinson; R. Hanley, Cairra, D. Harkness, G. Bolland, A. Murray.  
Scorers: Bolland 3, Murray 3, Harkness 2.  
Saturday, 20th February.  
Beat BRENTFORD (Hendon) 3-0. Half-time: 1-0.  
Team: Bonetti; R. Corney, R. Drake; R. Seaman, T. More, M. Robinson; A. Cairra, C. Shaw, D. Harkness, G. Bolland, A. Murray.  
Scorers: Shaw, Harkness, Murray.  
Saturday, 27th February.  
Beat LUTON TOWN (Hendon) 6-1. Half-time: 2-0.  
Team: A. Murray; R. Corney, A. Harris; R. Seaman, T. More, M. Robinson; A. Cairra, C. Shaw, D. Harkness, G. Bolland, D. Gillingwater.  
Scorers: Bolland 3, Shaw 2, Harkness.





Mr. FRED HANNEY, who was awarded the M.B.E. in the New Year's Honours List, went to Buckingham Palace a fortnight ago to receive the insignia at an investiture. With him outside the Palace are his son and daughter.

#### TALK OF STAMFORD BRIDGE (contd.)

Our Juniors have an attractive match on this ground on Monday evening next, meeting Aston Villa in the fifth round of the F.A. Youth Cup. The kick-off will be 7.30 p.m., and a good crowd is expected to cheer our youngsters on into the semi-finals.

We are now entering on the last two months of the season and it is a good time to take stock. Our Combination team, as ever, is engaged in a fight with Tottenham Hotspur for the leadership of that league, while our Metropolitan League team is also having a hard chase

at the top of the table. Although it never does to count one's chickens before they are hatched, we can surely look to our youngsters to win the South-East Counties League for the fourth year running and the fifth time in six seasons. Arsenal keep a steady lead of one point over us, but have only two matches left to play, while we still have eight to go—barring a collapse of startling dimensions, we are surely 'high-and-dry' here. In the London Midweek League, however, we are nowhere near as well placed although top of the table, and Charlton Athletic could easily overtake us.

Last Saturday we had a bit of a goalkeeping problem, as only two of our four professionals were fit to play, Peter Bonetti having gone down with flu in addition to the absence of Robertson. In the event Matthews and Smart kept for our two senior teams and William Gerard Green, the R.A.M.C. goalkeeper, played in our Metropolitan League team, Major George Howells, R.A.M.C., making these arrangements possible. Arthur Murray, usually an outside-left, played in goal for our Juniors.

Our Juniors' South-East Counties League Cup match against West Ham United will be played on their ground on Monday, 14th March.

Our Juniors now meet Reading in the final of the Southern Junior Floodlight Cup. Extra time was needed before we beat West Ham United in the semi-final last Tuesday. We were two goals down in seven minutes and did not open our score until we received an own goal in the 66th minute. Bobby Tambling scored our second in the 78th minute and then the winning goal after eight minutes of extra time.

#### F.A. CUP FINAL TICKETS—BALLOT ARRANGEMENTS

We are once again holding a ballot for F.A. Cup Final tickets and, starting with Boxing Day, a voucher will be printed in each of our first team home programmes until the end of March. These will be numbered for each match, and all applications for standing tickets (3s. 6d. each) for the Cup Final should be accompanied by these vouchers.

Details for sending in applications will be announced in our programme for 2nd April and the names of the lucky winners shortly after the draw.

Voucher  
No.

8

## FIXTURES 1959-60

### Metropolitan League

1959	Opponents	Venue	F.A.
Aug. 22	Canterbury City ...	Away	3 1
" 29	HASTINGS UNITED ...	HOME	4 1
Sept. 2	DARTFORD ...	HOME	3 0
" 5	Tonbridge ...	Away	1 2
" 9	Dartford ...	Away	3 2
" 12	HEADINGTON U. ...	HOME	1 2
" 14	West Ham United ...	Away	4 2
" 19	BEDFORD TOWN ...	HOME	5 0
" 23	ARSENAL ...	S. BRIDGE	1 0
Oct. 3	Eastbourne United ...	Away	2 2
" 17	Luton Town ...	Away	1 3
" 24	Headington United ...	Away	1 4
" 31	DUNSTABLE TOWN ...	HOME	2 1
Nov. 21	Haywards Heath ...	Away	4 1
" 28	Hastings United ...	Away	6 0
Dec. 5	Eastbourne United ...	Away	2 2
" 12	Bedford Town ...	Away	3 1
" 26	Haywards Heath ...	Away	5 1
1960			
Jan. 2	Luton Town ...	Away	3 5
" 9	FULHAM ...	HOME	1 2
" 23	Brighton & Hove Albion ...	Away	4 0
" 30	GUILDFORD CITY ...	HOME	6 0
Feb. 6	WEST HAM UNITED ...	HOME	8 0
" 8	Fulham ...	Away	1 2
" 13	Arsenal ...	Away	1 1
" 27	Guildford City ...	Away	0 0
Mar. 5	BRIGHTON & H. A. ...	HOME	.....
" 19	Newbury Town ...	Away	.....
" 26	Windsor & Eton ...	Away	.....
Apr. 2	TONBRIDGE ...	HOME	.....
" 23	Newbury Town ...	Away	.....
Undated	Crawley Town ...	Away	.....
"	Didcot Town ...	Away	.....
"	Didcot Town ...	Away	.....
"	Dunstable Town ...	Away	.....
"	Canterbury City ...	Away	.....
"	Crawley Town ...	Away	.....
"	Windsor & Eton ...	Away	.....

All Home matches will be played at Hendon.

### Metropolitan League Challenge Cup

1959	Opponents	Venue	F.A.
Nov. 7	(2) Headington United ...	Away	1 4

### Metropolitan League Professional Cup

1959	Opponents	Venue	F.A.
Sept. 26	(1) Guildford City ...	Away	2 0
Nov. 14	(2) Tonbridge ...	Away	4 3
Feb. 20	(SF) FULHAM ...	S. BRIDGE	7 0

### London F.A. Challenge Cup

1959	Opponents	Venue	F.A.
Oct. 5	(1) WEMBLEY ...	HOME	16 0
" 15	(2) Arsenal ...	Away	2 1
Nov. 2	(SF) Tottenham Hotspur ...	Away	4 1
" 30	(F) TOOT. & MITCHAM ...	HOME	2 1

### South-East Counties League

1959	Opponents	Venue	F.A.
Aug. 22	BEXLEYHEATH ...	Hendon	8 1
" 29	Watford ...	Away	4 0
Sept. 5	MILLWALL ...	Hendon	2 0
" 12	Tottenham H. ...	Away	7 2
" 19	Portsmouth ...	Away	5 0
" 26	CRYSTAL PALACE ...	Hendon	3 0
Oct. 10	CHARLTON A. ...	Hendon	4 0
" 24	West Ham United ...	Away	2 0
" 31	Luton Town ...	Away	9 1
Nov. 21	TOTTENHAM H. ...	Hendon	6 1
" 24	ARSENAL ...	Hendon	1 1
" 28	Millwall ...	Away	1 1
Dec. 5	Southend United ...	Away	7 1
" 12	Leyton Orient ...	Away	7 1
1960			
Jan. 9	Arsenal ...	Away	2 2
" 23	Charlton A. ...	Away	2 3
Feb. 6	PORTSMOUTH ...	Hendon	4 0
" 13	WATFORD ...	Hendon	8 0
" 20	BRENTFORD ...	Hendon	3 0
" 27	LUTON TOWN ...	Hendon	6 1
Mar. 5	Bexleyheath ...	Away	.....
" 12	LEYTON ORIENT ...	HOME	.....
" 19	Crystal Palace ...	Away	.....
" 26	FULHAM ...	HOME	.....

### South-East Counties League Cup

1959	Opponents	Venue	F.A.
Oct. 3	(1) Millwall ...	Away	2 1
1960			
Jan. 2	(2) PORTSMOUTH ...	Hendon	3 2
Mar. 14	(SF) West Ham United ...	Away	.....

### F.A. Youth Cup

1959	Opponents	Venue	F.A.
Oct. 17	(1) W.THURROCK A. S.BRIDGE	10 0	
Nov. 10	(2) Colchester United ...	Away	9 1
Dec. 19	(3) Ford United ...	Away	0 0
1960			
Jan. 16	(3) FORD UNITED S. BRIDGE	11 0	
" 30	(4) Portsmouth ...	Away	2 1
Mar. 7	(5) ASTON VILLA S. BRIDGE	.....	

### Southern Junior Floodlight Cup 1958-59 Final

1959	Opponents	Venue	F.A.
Oct. 14	WEST HAM UNITED S.BRIDGE	0 1	

### Southern Junior Floodlight Cup

1959	Opponents	Venue	F.A.
Oct. 13	(1) Brentford ...	Away	2 0
Dec. 15	(2) Southend United ...	HOME	5 0
1960			
Mar. 1	(SF) WEST HAM U. S.BRIDGE	3 2	
Undated	(F) READING ...	.....	

### London Minor Cup

1959	Opponents	Venue	F.A.
Nov. 14	(1) BEXLEYHEATH ...	Hendon	3 0
Undated	(2) TOTTENHAM H. ...	HOME	.....



## HALF-TIME SCOREBOARD

### FIRST DIVISION

A	Birmingham C. v. Nottm. F.	.....
B	Burnley v. Blackburn R.	.....
C	Leeds U. v. Blackpool	.....
D	Leicester C. v. Man. C.	.....
E	Manchester U. v. Wolves	.....
F	Newcastle U. v. Fulham	.....
G	Preston N.E. v. Arsenal	.....
H	Tottenham v. Sheffield W.	.....
J	W.B.A. v. Bolton W.	.....
K	West Ham U. v. Everton	.....

### SECOND DIVISION

L	Cardiff C. v. Huddersfield T.	.....
M	Charlton A. v. Brighton	.....
N	Hull C. v. Leyton Orient	.....
O	Middlesbrough v. Aston Villa	.....
P	Plymouth v. Portsmouth	.....

### THIRD DIVISION

R	Brentford v. Bournemouth	.....
S	Halifax T. v. Queen's Park R.	.....
T	Southend U. v. Wrexham	.....

### FOURTH DIVISION

U	Crystal Pal. v. Aldershot	.....
V	Watford v. Millwall	.....

## FORTHCOMING MATCHES AT THIS GROUND

**MONDAY, 7th MARCH**

(Kick-off 7.30 p.m.)

**ASTON VILLA**

F.A. YOUTH CUP—FIFTH ROUND

**SATURDAY, 12th MARCH**

(Kick-off 3 p.m.)

**SWANSEA TOWN**

Football Combination

**SATURDAY, 19th MARCH**

(Kick-off 3 p.m.)

**BLACKPOOL**

Football League

RESERVED SEATS—Only 12/- seats now available.

**SATURDAY, 26th MARCH**

(Kick-off 3 p.m.)

**LUTON TOWN**

Football Combination

## Seat Reservations for League Matches

Prices of reserved seats at home League matches are 6/-, 8/-, 10/- and 12/-. Applications (by post only) will be accepted one calendar month in advance, and should be accompanied by remittance and stamped addressed envelope. It will be appreciated if separate application is made for each match. Seats may be purchased, if still available, by personal application at the club offices in the week preceding the match.