

EXETER CITY

FOOTBALL CLUB

Saturday, January 9th

F.A. Cup Third Round

EXETER CITY

VERSUS

LUTON TOWN

Kick-off 2.15 p.m.

Official Programme **4^D**

When in Cornwall

why not stay at the

PALM BEACH HOTEL

Gyllyngvase, FALMOUTH

Telephone 744

SEA FRONT POSITION

FIRST-CLASS CUISINE

TABLE LICENCE

SPECIAL TERMS FOR WINTER GUESTS

Next Home Match

Saturday, January 16th

OLDHAM ATHLETIC

Fourth Division

Kick-off 2.45 p.m.

Clock Tower Cafe

(EXETER) LTD

Exeter's Leading and Largest
ESPRESSO COFFEE BAR (Seating 150)

2-COURSE

Luncheons from 3/6

12 noon—2 p.m.

Open until 11 p.m. Nightly

Phone 72119

Wattys Restaurant

NORTH STREET, EXETER

(Next to Gaumont Cinema)

Famous for Grills and Snack Counter

CONTINUOUS SERVICE FROM
10 a.m. — 10 p.m. (except Sundays)

Tel 56063 Evening Table Bookings accepted

Telephone 75815

Austins

FOR

OUTSIDE CATERING

68, Bartholomew St. West
EXETER

Official Caterers to Exeter City F.C.

EXETER CITY FOOTBALL & ATHLETIC

CO. LTD.

Regd. Office : St. James' Park, Exeter

Tel. 54073

PRESIDENT : S. H. THOMAS

VICE-PRESIDENT : J. RIGBY

BOARD OF DIRECTORS:

Chairman : G. H. GILLIN

J. WARNE (Vice-Chairman),

H. L. WHITE,

A. W. CRAWSHAW,

J. F. WATTS

J. R. COWLEY

SECRETARY

G. J. GILBERT

HONORARY MEDICAL OFFICER

MANAGER

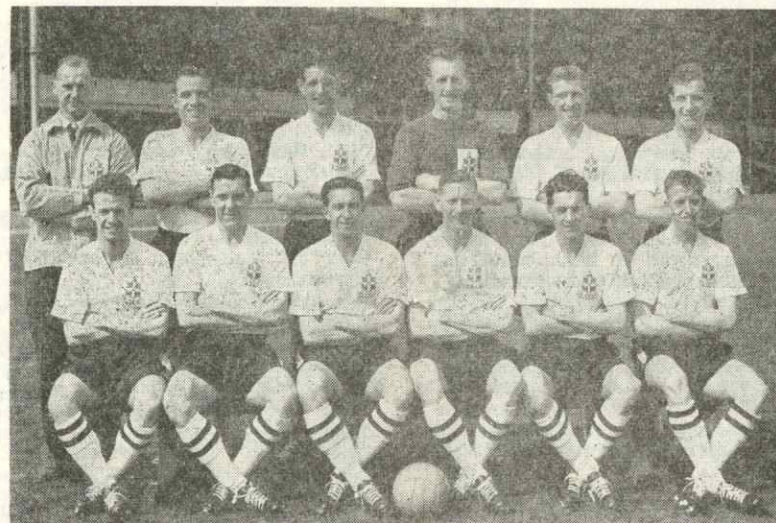
FRANK BROOME

DR. G. L. STUMBLES

No. 16

Saturday, January 9th

1959/60



LUTON TOWN F.C.

CUP FINALISTS, 1958/59



TELEVISION — RADIO — STEREO HI-FI — RECORDS
TAPE RECORDERS & DOMESTIC ELECTRICAL EQUIPMENT

FILDEWS

99, Fore Street, EXETER

Phone 74161/2

OVER 25 YEARS EXPERIENCE AT YOUR SERVICE



IVOR DOBLE

The Jeweller of

179, SIDWELL STREET & 154, COWICK STREET

A large range of Sports Cups and Trophies at the
keenest price always available

VISIT OUR SHOWROOM AT SIDWELL STREET
THIS IS NO PRINTER'S ERROR, BUT—

Our Visitors

***BAYNHAM, Ronald (Goalkeeper).** Born Birmingham. Joined Luton in 1951 from Worcester City. Played for England v. Denmark, Ireland and Spain in 1955. Also England "B" v. Yugoslavia "B" and Football League and Football Association teams.

DUNNE, Seamus (Right-back). Born Wicklow (Eire). Joined Luton in 1950 from Shelbourne. Between 1953 and 1958 played for Eire against France, Luxembourg Spain, Denmark (twice), England and Poland.

DANIEL, Alan (Left-back). Born Ashford, Kent. Signed amateur forms for Luton in 1956 and turned pro in 1958. Made one First Division appearance last season.

***GROVES, John (Right-half).** Born Langwith, Nr. Mansfield. Has been with Luton, his only club, since 1950. Thirty First Division games last season. Captains the side.

KELLY, Terence (Centre-half). A native of Luton who signed for the "Hatters" in 1950. A product of the Vauxhall Motors works team.

***PACEY, David (Left-half).** Born Luton. Played for Hitchin Town before signing for Luton in 1956. Selected for the F.A. XI v. R.A.F. in 1958. Thirty six First Division games last season.

***BINGHAM, William (Outside-right).** Born Belfast. Joined Luton from Sunderland in July, 1958. Has played in every international game for Ireland since 1952. Scored 8 goals in 36 First Division games last season.

TURNER, Gordon (Inside-right). Born Hull. Signed for Luton upon demob. from the Navy in 1950. Selected for the Football League v. the Scottish League in 1955 and for the F.A. v. the Army in 1958. Second highest scorer last season with 14 League goals.

***BROWN, Alan (Centre-forward).** Born Kennoway, Fife. Has been with Luton since February, 1957. Previously with Blackpool and played three times for Scotland whilst with the Seasiders. Top scorer last season with 20 goals in 39 First Division games.

***MORTON, Robert (Half-back or Forward)** Born Aston Clinton (Bucks). Signed for Luton, his only club, in 1946. Played for Football Combination v. Dutch XI in 1954 and 1957. England "B" v. Switzerland "B," 1956, F.A. XI v. the Army, 1955. Reserve for England team on three occasions.

***GREGORY, Anthony (Outside-left).** Born Luton. Signed in 1955 from Vauxhall Motors. At present serving in the Army.

**Members of the team beaten by Nottingham Forest in the Cup Final last May.*

Before and after the Match visit

The Greyhound Hotel

for SNACKS - LUNCHEONS - DINNERS

SIDWELL STREET - EXETER

available for your function — Weddings, Parties, Etc.

Telephone : EXETER 76049

Managers :

MOTORCYCLISTS !

MAKE **PIKE'S** YOUR GOAL

THE LEADING MOTORCYCLE DEALERS OF THE WEST

TELEPHONE
58241

P. PIKE & CO. LIMITED

And
MILLBAY ROAD
PLYMOUTH

ALPHINGTON ST. ★ EXETER

Club Chatter *By Maurice Golesworthy*

It is nine years since we last met a club from the First Division in an F.A. Cup tie on this ground. Then our visitors were Chelsea and we caused quite a shock by holding them to a 1-1 draw, only to be beaten 2-0 at Stamford Bridge in the replay. This afternoon, we are hoping for something better.

We have not seen Luton Town at St. James Park since they beat us here, 2-4, in September, 1936, but they are old friends, for we were with them in the Southern League and subsequently the Third Division from 1908 until they won promotion in 1937.

Season 1936/37 was Joe Payne's season for it was then that he created a record for the club and for the Southern Section by netting 55 goals. Luton had discovered Payne's goalscoring capabilities near the end of the previous season. For a couple of years he had been ranked as just a good reserve left half back, but near the end of 1935-36, when the side was hit by injuries, it was decided to include Payne as a centre-forward in the League side to meet Bristol Rovers. That was April 13th, 1936, an unlucky day for the Rovers, a great day for the Town.

Most of my readers are ahead of me at

this stage. Few need reminding that Luton Town inflicted a 12-0 defeat on the Rovers. It was a record score for the Southern Section and Joe Payne created an individual Football League record by getting 10 of those goals. First game as a centre-forward! A hat trick before the interval and a double hat trick in the second half, plus an odd goal for luck! Phew! I recall the occasion in some detail now because I know that it still makes Luton supporters lick their lips. The Hatters would certainly like to make another discovery like that this season when they have been having so much trouble in finding the net.

Although it is true that Luton have been having a lean time this season that is no reason why we should under-rate them. We know that they are a good footballing side and don't forget that one of their five victories was a shock 1-0 defeat of the Spurs, now one of the finest teams in the country.

Mr. Syd Owen, a great favourite in the Luton half-back line for so many years, and last season's "Footballer of the Year," is certainly having a worrying time in his first season as manager. Perhaps he would sooner be back in his old position at centre-half for he has so far had no luck in his search for a player to put the bite back into

MAIN DISTRIBUTORS OF

TOP SELLING PAINT LINES

AS SEEN ON TELEVISION

T. KNAPMAN & CO., LTD.

EXETER & TAUNTON

Including DULUX, DULITE, MAGNET
MAGICOTE ONE COAT GLOSS

GLASS :: WALLPAPERS :: BRUSHES, ETC.



FOOTBALL
CLOTHING
and
EQUIPMENT
for Clubs and
all Players

WEBBERS SPORTS

51, HIGH STREET, EXETER
and at TORQUAY and TAUNTON

Send your enquiries for any
kind of Building Work,
Repairs or Decorations

to

A.W. (Billy) CRAWSHAW

Building Contractor

26, HANOVER ROAD
EXETER

Phones Exeter 55751 — 56321 — 74970

MATTHEWS

WINE
SPIRIT
BEERS

For Celebrations of all kinds
we can offer the best selection in
the City. Glasses, etc., loaned
free of charge. Free delivery
and collection.

40, SIDWELL ST., EXETER 54680

County Steam Laundry

EXWICK .. EXETER

Tel. 54965

Modern Launderers
and Dry Cleaners

Contractors to
EXETER CITY FOOTBALL CLUB



GREENSLADE'S TOURS



PRIVATE PARTY TRAVEL

A large fleet of Modern Luxury Coaches
available for Private Parties

14, QUEEN STREET, EXETER

Telephone 74103

BARTLETT & SON (EXETER) LTD.

EXETER CITY

Right

Red Shirts, White trimming, Red Shorts

Jones

Left

2
Foley

3
MacDonald

4
Mitchell

5
Oliver

6
Thompson

7
Stiffle

8
Rees

9
Wilkinson

10
Micklewright

11
Dale

Referee :

Mr. L. CALLAGHAN
(Merthyr Tydfil)



Linesmen :

Mr. G. L. Hedges (Red Flag)
Mr. E. W. Owers (Yellow Flag)

11
Gregory

10
Cummins

9
Brown

8
Turner

7
Bingham

6
Pacey

5
Kelly

4
Groves

Left

3
Daniel

Baynham

2
Dunne

Right

White Shirts, Black Shorts

LUTON TOWN

PRINTERS

BOOKBINDERS

COWICK STREET · EXETER

HOLMAN HAM

& CO., LTD.

Family Chemists

EXETER

South Street
St. Ann's Pharmacy, Sidwell Street
Fore Street, Heavitree
Polsloe Bridge — Cowick Street
Glass House Lane, Countess Weir
Birchy Barton Hill

Also BRANCHES IN
DEVON, SOMERSET & DORSET

Centre Sea Front
Premier Position
Fully Licensed

BELGRAVE HOTEL, TORQUAY

Afternoon Teas
Luncheons and Dinners
First Class Accommodation

For ALL
Timber and Building Materials

The DEVON TRADING COMPANY EXETER Ltd.

BRANCHES THROUGHOUT DEVON

Tel. EXETER 71391

Saturday, February 7th

MILLWALL v EXETER CITY
DAY EXCURSION BOOKINGS TO

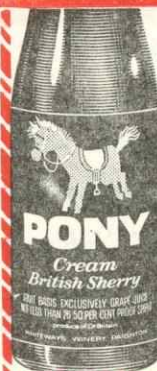
LONDON

(PADDDINGTON)

RETURN
FARE 36/0 SECOND
CLASS

Depart: Exeter (St. David's) 1.40 or 8.54 a.m.

Western BRITISH RAILWAYS Region



Is there a pony
in your pub?

PONY
CREAM BRITISH SHERRY
WHITEWAY'S WINERY, PAIGNTON



Something
with a
kick in it

VICTORIA GARAGE

ST. JAMES

Tel. **EXETER** 56864

YOUR LOCAL RENAULT DEALERS
MORGAN DISTRIBUTORS

USED CARS ● SELF-DRIVE HIRE ● SHELLUBRICATION SERVICE

Club Chatter—Continued

his team's attack. Still, Manager Owen is a determined fellow and with only a matter of six points between the bottom 12 clubs in the table he certainly has not given up hope of getting away from the danger zone.

We wish him luck in that particular race but are unable to extend the same good wishes for his side in the Cup. After all, Luton had their share of Cup glory when they reached the Final only last season.

That was the Luton club's first appearance in the Cup Final and they reached that goal by defeating Leeds United, Leicester City, Ipswich Town, and "Giant Killers," Norwich City.

The Luton team beaten, 2-1, by Nottingham Forest at Wembley was:— Baynham; McNally, Hawkes; Groves, Owen, Pacey; Bingham, Brown, Morton, Cummins and Gregory.

Luton's team for this afternoon's game was not available at the time of writing and because of the number of changes they have been making in their team recently it is difficult to guess which of their players will be in the line-up today. However, I confidently expect that we shall see at least seven of last season's Cup Finalists.

Because of their poor showing in the First Division this season Luton Town have

lost a lot of their supporters. On all but two Saturdays when Luton have been at home this season their attendance has been the lowest in the First Division. The exceptions were when they met the Spurs and Arsenal. Their home attendance so far works out at an average of a little over 17,000. Sounds alright to us at St. James Park but it isn't good enough for a First Division club.

Despite this, however, Luton have quite a number of supporters here with them this afternoon. We extend them a hearty welcome and for their information I append below one or two notes about our side.

The skipper of the City team is Ken Oliver. He was with Brush Sports and Sunderland before joining Derby County in September, 1949. He joined the City in January, 1958.

Longest serving City player is right-half Arnold Mitchell. This afternoon he is making his 311th appearance, (League and Cup) for the City.

Before joining Exeter in July, 1952, Arnold Mitchell had been with Derby County, Notts Forest and Notts County.

Exeter City's leading goalscorer this season is inside-forward Graham Rees with a total of 12. Graham came to us in 1954

If you are interested in joining the ROYAL MARINE FORCES VOLUNTEER RESERVE for Spare-Time Adventure and Good Comradeship

Apply to :—

LYMPSTONE DETACHMENT, R.M.F.V.R.,
Infantry Training Centre Royal Marines,
Lymington - Nr. Exmouth - Devon

ANY WEDNESDAY EVENING — 7.30 p.m. to 9.30 p.m.

Club Chatter—Cont.

as a winger from Junior Welsh football, Pontypridd Youth Club. Last season he netted 21 goals.

In the event of to-day's match being drawn, the replay will be on Wednesday next, January 13th, kick-off 7.15 p.m. The City have received an allocation of Grand Stand tickets at 7/- each and these will be on sale at the Secretary's office immediately after the game.

British Railways (Western Region) will offer special excursion bookings to Luton at a return fare of 30/-. Unless sufficient demand is received to justify running a special train, passengers will be able to travel from Exeter (St. David's) on the 11.23 a.m. or 12.40 p.m. trains. Please watch for further announcements.

Here's hoping for an entertaining game and City's first ticket to the Fourth Round for nine years.

We have another home game here next Saturday when we have a visit from Oldham Athletic.

We defeated Oldham, 2-1, at Boundary Park in our second away game of the season and with Oldham still struggling on the bottom of the table there is no reason why we shouldn't complete our second double of the season next Saturday.

It was no surprise when the Board decided that this will be our Reserve team's last season in the Southern League. The question of withdrawal from this competition has been put to the Board on a number of occasions since the war and we came very close to taking this step at least once before.

Now that we are at long last going to sever our connection with the Southern League it looks like we shall ring down the curtain after 52 years in that competition by finishing in one of the top positions. Yes, I know that we are in what is virtually the Second Division, but we have yet to be beaten at home this season and have one of the best goal averages in this League.

GOALSCORERS

Fourth Division: Rees 9, Micklewright 7, Stiffle 5, Wilkinson 5, Dale 4, Calland 3, Thompson 3, Atkins 2, Bennett 1, Birch 1, Brady (Millwall) 1, Rutherford (Southport) 1.—Total 42.

F.A. Cup: Rees 3, Calland 1, Dale 1, Stiffle 1, Wilkinson 1.—Total 7.

Southern League: Hill 11, Bennett 5, Pulman 5, Birch 4, Rackley 4, Atkins 3, Calland 2, Emery 2, Cragg 1, Micklewright 1, Rapley 1, own goal 1.—Total 40.

Tel. 74669

Tel. 72750

IMPERIAL HOTEL EXETER

LUNCHEONS - DINNERS - SPECIAL FUNCTIONS
LICENSED - LARGE CAR PARK

Your Goal after the Match

The GEORGE & DRAGON BLACKBOY ROAD
BASS ON DRAUGHT GEORGE F. MILFORD, Proprietor CITY ALES & STOUTS
OPEN AT 3.45 P.M. TO-DAY

NORRINGTON'S of EXETER

Tel. 75315 For **POWER FARMING EQUIPMENT** of all kinds
ANY MAKE SUPPLIED **Largest Stock of Spares in the West**

H. L. WHITE & SONS, LTD. BUILDING CONTRACTORS
 RIVERMEAD ROAD, EXETER CHURCH PATH, TOPSHAM
 Tel. EXETER 56884 Tel. TOPSHAM 3022
 50 Private Sites available in Exeter - 5 Bedroomed Houses from £1,900

Going Away? Whether by Land, Sea or Air

CONSULT
PARK & CO. LTD.
 — TRAVEL SPECIALISTS —

34, BEDFORD STREET, EXETER - Tel. 54258
 and QUEENS HALL, BARNSTAPLE - Tel. 4284

LUCKY PROGRAMME

Please retain your programme. An announcement will be made at half-time of two numbers and the holders will be given a Stand seat for the next Division IV game. The persons who purchased the programmes bearing the winning numbers should call at the office after the game and claim their Tickets.

No. 0155

GRECIANS' PRESENTATIONS at the CIVIC HALL
TOMBOLA EVERY FRIDAY - 7.30—9.30
£20 CASH PRIZES Admission 2/6

PREMIUM BOND WINNERS

Monday, 28th December.

28648—J. K. Hills, 18 Buller Road, Exeter.
 27001—G. W. Dockings, Southcott, Mor-
 chard Bishop.

20594 and 21789—Not claimed.

Saturday, 2nd January

27395—W. Cornish, 29 Haldon Road,
 Exeter.

A GREAT SAVE!

YOU too can SAVE by shopping

at

EXETER

CO-OPERATIVE SOCIETY LTD.



★ MEN'S & BOYS' WEAR A SPECIALITY ★

BEFORE AND AFTER THE GAME ... TRY **THE BROOK GREEN TAVERN** WELL STREET
 SNACKS ALWAYS AVAILABLE One minute from here

ST. ANNE'S ALES

Your Host and Hostess

BASS ON DRAUGHT

Mr. and Mrs. W. B. PRICE

FOURTH DIVISION				SOUTHERN LEAGUE					
1959		For	Agst.	1959		For	Agst.		
Aug.	22 Northampton T.	H	1	1	Aug.	26 Rugby Town	H	2	0
	24 Stockport County	A	0	1		29 Ashford Town	A	0	1
	29 Watford	H	2	0	Sept.	5 Dover	H	3	0
Sept.	2 Stockport County	H	2	1		12 Romford	A	1	2
	5 Oldham Athletic	A	2	1		23 Burton Albion	H	1	0
	7 Chester	A	0	1		26 Hinckley Athletic	A	2	0
	12 Carlisle United	H	1	3	Oct.	3	H		
	17 Chester	H	2	0		10 Corby Town	A	4	0
	19 Notts County	A	0	3		17 Merthyr Tydfil	H	6	1
	21 Bradford	A	0	1		24 Gloucester City	A	0	1
	26 Walsall	H	1	2		31 Yiewsley	H	3	3
	30 Bradford	H	3	1	Nov.	7 Margate	A	0	1
Oct.	3 Hartlepoons U.	A	3	4		10 R.N. Plym'th Com. (F)	H	6	1
	7 Crewe Alexandra	H	2	4		14	H		
	10 Millwall	H	2	2		21 Sittingbourne	A	1	0
	14 Crewe Alexandra	A	1	1		28 Guildford City	H	2	1
	17 Southport	A	2	3	Dec.	5 Kidderminster H.	A	0	1
	24 Gillingham	H	2	0		12 Trowbridge T.	H	3	1
	31 Barrow	A	3	3		19 Ramsgate A.	H	3	2
Nov.	7 Aldershot	H	3	1		26 Tunbridge Wells U.	H	4	2
	14 Barnstaple T. (Cup)	H	4	0		28 Tunbridge Wells U.	A	0	4
	21 Gateshead	H	2	1	1960				
	28 Rochdale	A	0	3	Jan.	2 Ashford Town	H	3	2
Dec.	5 Brentford (Cup 2)	H	3	1		9 Clacton Town	A		
	12 Doncaster Rovers	A	1	0		16 Dover	A		
	19 Northampton T.	A	1	1		23 Romford	H		
	26 Torquay United	A	3	2		30			
	28 Torquay United	H	1	0	Feb.	6 Burton Albion	A		
Jan.	2 Watford	A	2	5		13 Hinckley A.	H		
	9 Luton T. (Cup 3)	H				20 Cambridge U.	A		
	16 Oldham Athletic	H				27 Corby Town	H		
	23 Carlisle United	A			Mar.	5 Merthyr Tydfil	A		
	30 (4) Workington	H				12 Gloucester C.	H		
Feb.	6 Notts County	H				19 Yiewsley	A		
	13 Walsall	A				26 Margate	H		
	20 (5) Hartlepoons U.	H			Apr.	2 Folkestone Town	A		
	27 Millwall	A				9 Sittingbourne	H		
Mar.	5 Southport	H				15 Bexleyheath and			
	12 (6) Gillingham	A				Welling	H		
	19 Barrow	H				16 Guildford City	A		
	26 (S.F.) Aldershot	A				18 Bexleyheath and			
Apr.	2 Darlington	H				Welling	A		
	9 Gateshead	A				23 Kidderminster H.	H		
	15 Crystal Palace	A				28 Ramsgate Athletic	A		
	16 Rochdale	H				30 Trowbridge Town	A		
	18 Crystal Palace	H			May	4 Rugby Town	A		
	23 Workington	A							
	25 Darlington	A							
	30 Doncaster Rovers	H							

THE FINEST T.V. RENTAL SERVICE IN THE COUNTRY FROM

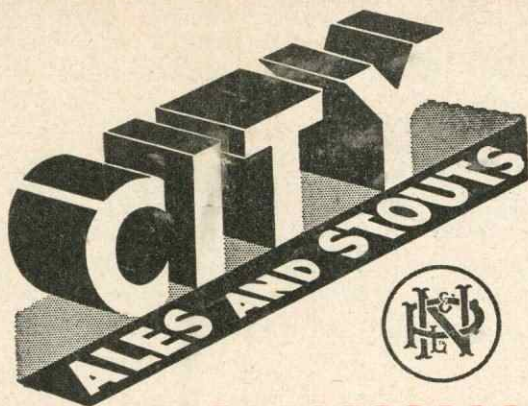
Robinson Rentals

148, SIDWELL STREET
EXETER

LIMITED

TELEPHONE 77773

Rent YOUR T.V. — FREE Installation — FREE repairs — FREE replacements — FREE insurance



Half-Time Scores

This service is supplied and operated by The Grecians' Association

A Bath C. v Brighton	K Lincoln C. v Burnley
B Bournemouth v York City	L Nott'm. F. v Reading
C Bradford C. v Everton	M Rotherham U. v Arsenal
D Bury v Bolton W.	N Watford v Birmingham C.
E Cardiff C. v Port Vale	P Aldershot v Rochdale
F Fulham v Hull C.	Q Barrow v Oldham A.
G Gillingham v Swansea T.	R Millwall v Walsall
H Huddersfield v West Ham U.	S Southport v Notts C.
J Ipswich T. v Peterborough	T Torquay U. v Hartlepoons U.

Southern League Personality of the Year SPECIAL STATUETTE AWARD

by the

EMPIRE NEWS

READ THE EMPIRE NEWS FOR FULL DETAILS OF THIS GREAT SCHEME
AND THE BEST REPORTS OF THE SOUTHERN LEAGUE GAMES EVERY
SUNDAY