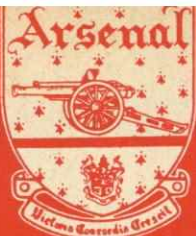


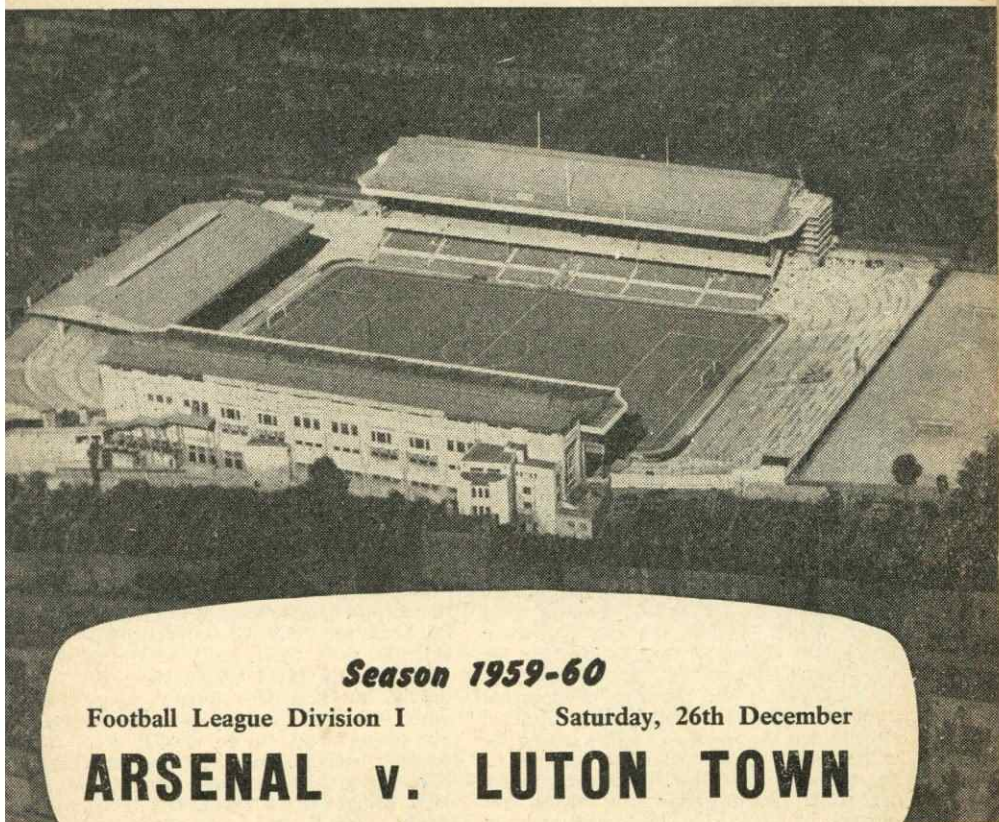
F.A. Cup Winners
1930, 1936, 1950.



League Champions
1931, 1933, 1934, 1935,
1938, 1948, 1953

Arsenal

FOOTBALL CLUB



Season 1959-60

Football League Division I

Saturday, 26th December

ARSENAL v. LUTON TOWN

KICK-OFF 3 p.m.

OFFICIAL

6^d

PROGRAMME

ARSENAL FOOTBALL CLUB LIMITED

Directors

SIR BRACEWELL SMITH, BART., K.C.V.O.

(Chairman)

COMMANDER A. F. BONE, R.D., R.N.R., RETD.

J. W. JOYCE, ESQ.

D. J. C. H. HILL-WOOD, ESQ.

G. BRACEWELL SMITH, ESQ., M.B.E., B.A.

Secretary

W. R. WALL

Manager

G. H. SWINDIN



LEAGUE CHAMPIONS
1931, 1933, 1934,
1935, 1938, 1948,
1953.

Colours—Shirts: Red, White
Sleeves & Collars: Shorts:
White. Stockings: Blue,
White rings, White tops.



F.A. CUP WINNERS:
1930, 1936, 1950.

ARSENAL STADIUM,
HIGHBURY, N.5

Grams:—

GUNNERETIC,
FINS PARK, LONDON

Vol. XLI. No. 12.

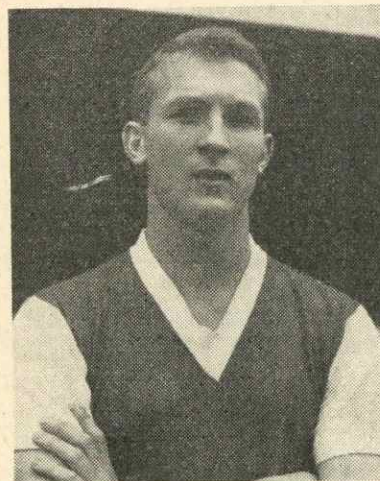
Saturday, 26th December

Voice of Arsenal

IT is a long time since we embarked upon our Christmas programme (which begins today instead of the old custom of having a match on Christmas morning) so conscious of our position in the League. Everyone at Highbury, whatever part they play in the organisation of Arsenal, is deeply concerned. It would be quite wrong, however, to say that the feeling is one of apprehension. It is one thing to have a problem with little chance of finding a solution to it. It is quite another to be able to see the future sensibly and with a confidence which is not misplaced. We feel that we are in the second category for, whilst judging from some of the letters we receive, some people can see no reason whatsoever for our decline after a most encouraging start to the season, we see the phenomenal number of injuries sustained by Arsenal players this year—let alone this season, as being one of the principal reasons, if not, perhaps, all. What club in the country can suffer the misfortune of having five players in plaster in the same year in addition to two cartilage operations, and nearly all of them to key players.

It all began with Kelsey's broken arm on a misty night in Sheffield that fateful February game against United, which destroyed our Cup hopes, and it is still with us, or was still with us in Sheffield last Saturday against the Wednesday, when, with the score 1-1, we lost Vic Groves. This meant that Jimmy Magill, under the strain of playing his first game in our League side, had things made considerably more difficult for him in a re-organised ten-man team, a team, in any event, without Evans, Docherty, Charles and Herd.

Let us be very frank and admit that the injury hoodoo cannot be blamed one hundred per cent for our failings; from time to time there have been mistakes made on the field which have cost us dearly, but how true it is in sport that when the ball is not running for you everything seems to go wrong. We were striving valiantly on Saturday at Hillsborough to make up lost ground and at least bring away a point, and then, suddenly, Groves had gone; his presence, of course, in front of a young player like Magill would have been worth its weight



JIMMY MAGILL

Exceptionally good debut in trying circumstances

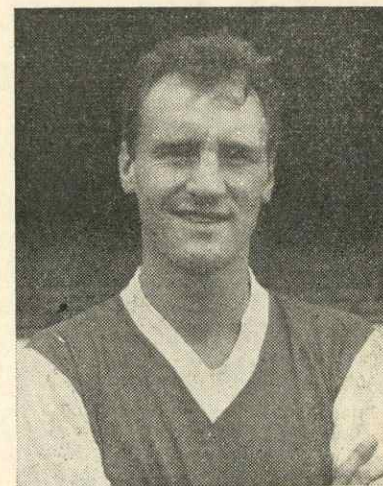
in gold especially in the second half of a League match when both sides are putting on the final pressure in an effort to snatch victory. It is one of the easiest things in football to win matches when you are winning. Look at the supreme confidence with which the pre-Munich Manchester United team used to take the field before a match. Some said it was cockiness; other more shrewd judges of the game knew that to be able to come on to the field with the state of mind which Matt Busby's fine team did, was almost worth a goal to United before play started. Conversely, as we are experiencing at the moment, it is all the more difficult mentally to slip into top gear after a run when luck, a vital necessity in winning football matches, seems always to be flowing in the opposite direction. This is not said in any way to detract from the quality of football which some sides have played against us. We were never in the hunt at Newcastle, for instance, but we were playing first class football against Preston North End at Highbury until Tommy Docherty broke his leg.

Football, of course, like any game which is decided by the roll of a ball, is all "ifs" and "buts." We should have won "if" . . . but Docherty's injury was the cardinal factor in our downward trend beginning when it did. Admittedly, we had lost the previous two away games against Everton and Manchester United, but any side at the top of the table might conceivably have lost those games away from home. Prior to those defeats our

defence had conceded only 10 goals in 10 games; now it has conceded 13 in the last 3.

Soon 1959 will be coming to an end; we look hopefully forward to 1960 to be more of a lucky year for us. In all conscience, we start off with four difficult matches, Wolverhampton Wanderers at home, and then three successive away matches, the Cup-tie with Rotherham, and then Tottenham and Manchester City at White Hart Lane and Maine Road respectively. With our injured players on the way back we are quite certain we can acquit ourselves well. We hope that our supporters will appreciate that the people most concerned about Arsenal's present position, are the players themselves. They will not let Arsenal down.

With no match this year on Christmas Day, and no home match the week before, we were not able to extend to our supporters from the Management, Staff and Players of Arsenal their best wishes for a Happy Christmas; we can, however, now take this opportunity of wishing you all a very Happy New Year. This provides a good opportunity, too, of extending these wishes to the members of the St. John Ambulance Brigade who do so much fine work at Arsenal Stadium; their efforts are not unseen; they are very much appreciated by all of us who use the stadium. They give their valuable voluntary services, hail, rain or shine, and whether it be a League or a Youth match. Thank you, you men of St. John.



LEN JULIANS

Scored the goal at Sheffield.

Summary of Football League appearances for all players now on the Arsenal Staff up to 1958-59 Season

	1949-50	1950-1	1951-2	1952-3	1953-4	1954-5	1955-6	1956-7	1957-8	1958-9	Total App's
H. GORING	29	34	16	29	9	41	37	13	10	2	220
A. J. KELSEY	—	—	—	25	39	38	32	30	38	27	233
D. J. EVANS	—	—	—	10	21	42	40	32	37	182	182
J. BLOOMFIELD	—	—	—	—	19	32	42	40	29	162	162
D. R. CLAPTON	—	—	—	—	16	39	39	28	39	161	161
W. DODGIN	—	—	—	1	39	3	15	41	23	39	161
L. E. WILLS	—	—	—	30	24	15	18	18	33	138	138
D. G. HERD	—	—	—	—	3	5	22	39	26	95	95
V. G. GROVES	—	—	—	—	—	15	5	30	33	83	83
J. HAVERTY	—	—	—	—	6	8	28	15	10	67	67
G. E. NUTT	—	—	—	—	—	8	1	21	16	46	46
G. WARD	—	—	—	3	—	—	—	10	31	44	44
T. DOCHERTY	—	—	—	—	—	—	—	—	38	38	38
J. HENDERSON	—	—	—	—	—	—	—	—	21	21	21
J. BARNWELL	—	—	—	—	—	—	—	1	16	17	17
J. A. STANDEN	—	—	—	—	—	—	—	—	1	13	14
J. W. F. J. PETTS	—	—	—	—	—	—	—	—	9	3	12
L. B. JULIANS	—	—	—	—	—	—	—	—	—	10	10
W. J. McCULLOUGH	—	—	—	—	—	—	—	—	—	10	10
P. J. GOY	—	—	—	—	—	—	—	—	—	2	2
R. L. GOULDEN	—	—	—	—	—	—	—	—	—	1	1
M. CHARLES	—	—	—	—	—	—	—	—	—	—	—

MATCHES BETWEEN ARSENAL AND LUTON TOWN

Division II

	Home	Away
1897-98	2-1	1-3
1898-99	3-0	1-4
1899-1900	5-1	0-3

Division I

	Home	Away
1955-56	3-0	0-0
1956-57	1-3	2-1
1957-58	2-0	0-4
1958-59	1-0	3-6

Arsenal's score shown first.

Summary of League Encounters

	P	W	D	L	F	A	Pts
Home	7	6	0	1	17	5	12
Away	7	1	1	5	7	21	3
	14	7	1	6	24	26	15

F.A. Challenge Cup

1901-02—1st Sup. Round: Arsenal won 2-0 (after a 1-1 draw).
1923-24—First Round: Arsenal won 4-1.
1933-34—Third Round: Arsenal won 1-0.
1951-52—Sixth Round: Arsenal won 3-2.

POLIO

Have you protected against Polio? If you are 26 years old, or under, protection can be obtained after the match at the L.C.C. Mobile Clinic. This Clinic is a green, single-decker bus standing in the entrance gate to Aubert Court flats in Avenell Road just beyond the practice ground at the South End of the Stadium. This Clinic will visit us on Saturday afternoons throughout the season.

The Cup-Tie at Rotherham

Two special excursion trains with refreshment facilities at the fare of 27/3d. have been arranged in the following timings.

	Forward	First train	Second train
Kings Cross dep.	7.55 a.m.	8.40 a.m.	
Finsbury Park dep.	8.04 a.m.		
Rotherham Central arr.	11.21 a.m.	12.27 p.m.	
	Return		
Rotherham Central dep.	5.00 p.m.	5.25 p.m.	
Finsbury Park arr.	8.19 p.m.	8.58 p.m.	
Kings Cross arr.	8.30 p.m.	9.06 p.m.	

DO YOU KNOW?

- What was the highest number of goals ever scored in an F.A. Cup-tie by a player who was on the losing side?
- Which player figured prominently in four promotion triumphs (with three different clubs) in 10 years—an all-time record?
- How many players in Football League history have scored a "hat-trick" on their wedding day?
- Which was the most surprising case of all time of a club missing promotion after appearing to be certain of winning it?
- Which was the youngest half-back line ever seen in a team in a Football League match?
- Which were the three post-war cases of as many as four players all being transferred together from one Football League club to another?

The answers to these questions are given on page 14.

PROGRAMME OF MUSIC

The following items of music will be included in the Programme of Music to be played by the Metropolitan Police Band, conducted by Mr. Roger Barsotti, A.R.C.M., Director of Music.

MARCH	"Old Comrades"	Tieke	TWO PIECES	
SELECTION	"New Moon"	Romberg	(a) "I kiss your hand, Madame"	Irwin
VALSE SELECTION	"Flights of Fancy"	Arr. Winter	(b) "Hunter's Ride"	Barsotti
SELECTION	"West Side Story"	Berstein	SELECTION	"A Christmas Festival"
			FANTASIA	"Festivalia"
			GALOP	"Galopade"

All engagements are by permission of the Commissioner of Police of the Metropolis, and subject to the exigencies of the service.

LEAGUE MATCH EXCURSIONS

Luton v. Arsenal at Luton

Monday, 28th December

Special Half-day Excursion fare 6/6d.

	FORWARD	RETURN
St. Pancras	Luton dep. 4.45 p.m.	
	dep. 12.5 p.m.	Kentish Town
Kentish Town	arr. 5.25 p.m.	
	dep. 12.15 p.m.	St. Pancras
Luton	arr. 1.15 p.m.	arr. 5.30 p.m.

Manchester City v. Arsenal at Manchester

Saturday, 23rd January, 1960

Special Day Excursion fare 30/-

(limited to 100 passengers)

	FORWARD	RETURN
Euston dep. 8.35 a.m.		Manchester (L. Rd.)
Manchester (L. Rd.)	dep. 5.35 or 11.55 p.m.	
	arr. 1.4 p.m.	Euston
		arr. 9.55 p.m. or 5.3 a.m.
		St. Pancras (Sunday)

Blackpool v. Arsenal at Blackpool

Saturday, 13th February, 1960

Special Day Excursion fare 37/6d.

(limited to 50 passengers)

	FORWARD	RETURN
Euston dep. 6.40 a.m.		Blackpool Sth.
Preston arr. 12.44 p.m.		dep. 5.10 p.m.
Blackpool Sth.	arr. 1.10 p.m.	Euston
		arr. 11.27 p.m.
		arr. 1.53 p.m.

SOUTH-EAST COUNTIES LEAGUE

Fixtures

	1959	Opponents	Venue	F.A.
Aug. 22	WEST HAM	...	HOME	4 2
" 27	Bexleyheath	...	Away	7 0
" 29	Crystal Palace	...	Away	0 0
Sept. 5	BRENTFORD	...	HOME	4 0
" 12	West Ham	...	Away	1 2
" 19	CHARLTON	...	HOME	0 1
" 26	LUTON	...	HOME	3 2
Oct. 3	Leyton Orient	...	Away	6 2
" 10	BEXLEYHEATH	...	HOME	4 0
" 17	TOTTENHAM H.	...	HOME	2 1
" 31	PORTSMOUTH	...	HOME	1 3
Nov. 14	Millwall	...	Away	0 1
" 21	LEYTON ORIENT	...	HOME	2 3
" 28	Tottenham Hotspur	...	Away	5 0
Dec. 5	FULHAM	...	HOME	4 3
" 12	Southend	...	Away	16 1
" 19	SOUTHEND	...	HOME	7 0

Home matches are played at Grovelands.

ALL RESERVED SEATS FOR THE
MATCH AGAINST WOLVERHAMPTON
WANDERERS AT HIGHBURY
ON JANUARY 2nd, 1960, HAVE
BEEN SOLD.

NEXT MATCHES AT THIS STADIUM

FOOTBALL LEAGUE

WOLVERHAMPTON

Saturday, 2nd January, 1960

Kick-off 3 p.m.

South-East Counties League

CHELSEA

Saturday, 9th January, 1960

Kick-off 2.30 p.m.

BURNLEY WIN AT HIGHBURY



Jack Kelsey leaps through the air to take the ball from Robson's head.

AFTER OUR INTERVAL LEAD



Kelsey foils a Burnley raid.



Jimmy Bloomfield in the process of laying on a pass for John Barnwell.



Half the eyes in the Burnley side are watching this shot by Jackie Henderson which went wide of the mark.

LUTON



PLAYERS

RON BAYNHAM (Goalkeeper): This fine goalkeeper might well have joined Arsenal, for the "Gunners" made enquiries about him in 1953. Luton, however, were loath to part with so promising a prospect. Birmingham born, he first came into prominence with Worcester City, the Southern League club. Joined Luton in 1951 and towards the end of the 1952-53 season gained a regular place in the league side. Two years later, Baynham was capped for England against Denmark, Ireland and Spain. He also played for the Football League.

ALAN COLLIER (Goalkeeper): Collier first came to notice while playing for the Bedford Championship Youth team. Made several appearances in Luton's reserve side before signing professional forms in May, 1955, at the age of 17. Tall and well built, Collier has made big strides since then but has naturally found it difficult to secure a regular first team place with Baynham playing so well.

SEAMUS DUNNE (Right-back): One of the three Irish internationals on Luton's books, Dunne has been an almost automatic choice for right-back for the past six seasons. Joined the club in 1950 from Shelbourne, and made his first team debut against West Ham in 1951. A hard fighting player, who is extremely quick to recover, Dunne has made 12 appearances for Eire.

ALAN DANIEL (Left-back): Son of Melville Daniel, the former Luton forward, this strapping young defender was discovered while playing in the Ashford and Weald schools side. Groomed by Bert Johnson, the ex-Charlton wing-half, he spent two seasons with Bexleyheath and Welling before joining Luton at the age of 17. Possesses fine positional sense and provides his wing-halves and forwards with a good service. Played only once last season, but has made several appearances this campaign.

JOHN GROVES (Right-half): A versatile player, Groves has appeared with success at inside-forward and centre-forward as well as both wing-half positions. Another who signed for Luton at 17, he is tall and fast, and his distribution of the ball is very accurate. Football is in his blood, for his father is Arthur Groves, the former Derby County inside-forward.

TERRY KELLY (Centre-half): When Syd Owen retired to take over as manager of the club after last season's Cup Final, Kelly gained a regular place in the League side for the first time. Although he had only limited opportunities, Kelly showed considerable promise in the past and has now developed into a stylish centre-half. A local product, he was signed from the Vauxhall Motors' works team in 1951 and can play in either wing-half position if necessary.

DAVID PACEY (Left-half): Like Kelly, Pacey was born in Luton, gaining his early soccer experience with Hitchin Town. Made his League debut on Christmas Day, two seasons ago, shortly after signing professional. A strong, attacking player, Pacey made only twelve appearances during 1957-58 but last season he gained a regular place when Reg Pearce was transferred to Sunderland.

BILLY BINGHAM (Outside-right): This lively Irish outside-right has amply repaid the five figure fee Luton gave Sunderland for his transfer in July, 1958, with some sparkling performances. Bingham, who first came to notice with Glentoran, is fast, direct and has a powerful shot. Born in Belfast, he has played in every Northern Ireland international match since 1952—39 in all.

BOB MORTON (Inside-right): Another utility player, Morton has been playing at inside-or centre-forward recently, but is better known as a wing-half. Has also deputised for Syd Owen at centre-half. Born at Aston Clinton, and signed as an amateur, Morton has played for England "B" and was chosen as reserve for the game against Russia last season.

ALLAN BROWN (Centre-forward): A Scottish international with 14 caps to his credit, Brown was transferred to Luton from Blackpool for £14,000 during the 1956-57 season. A tall, strong and intelligent player, he has always been a trouble to Arsenal sides, especially on the occasion when he scored a great goal for Blackpool to put Arsenal and himself out of the F.A. Cup in the 1952-53 Sixth Round. In scoring, he broke a leg and had to miss the Final. Can play equally well at wing-half.

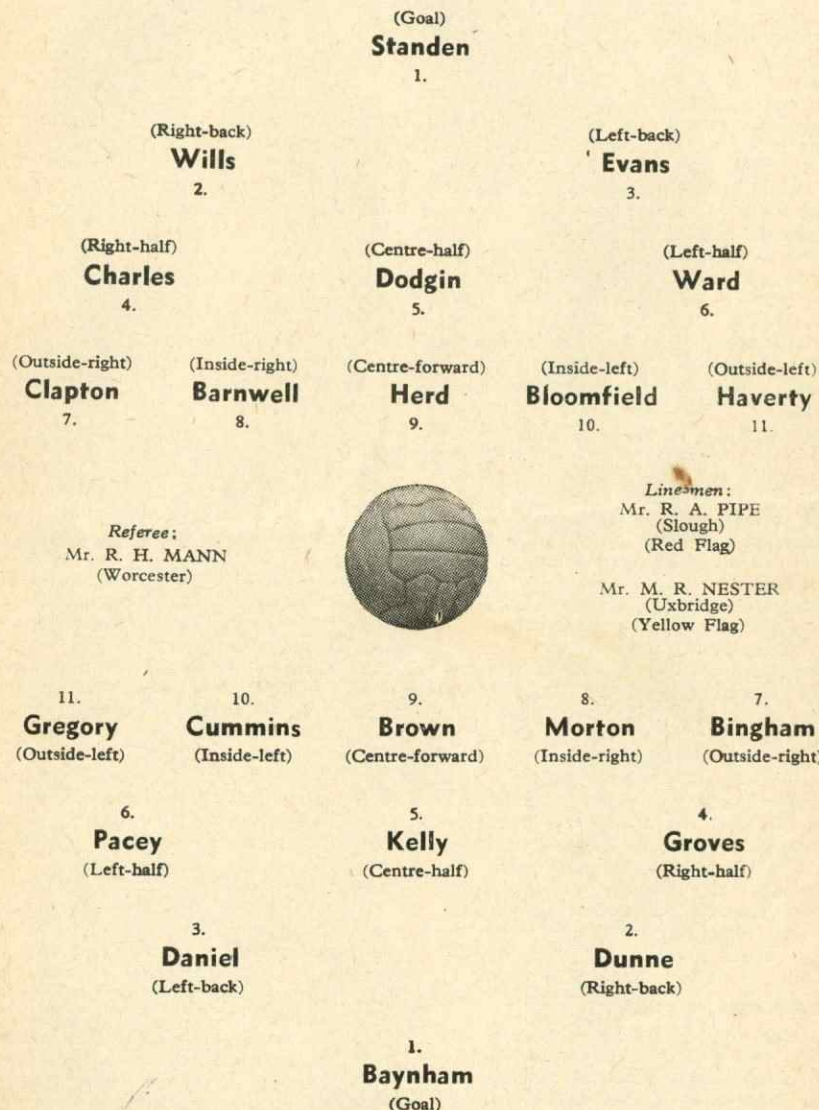
GEORGE CUMMINS (Inside-left): Dublin born, Cummins came to Luton from Everton in 1953 for a five figure fee. A hard worker who does much fetching and carrying, he is still one of the cleverest inside-forwards in the division. Has played 13 times for Eire, the last against Sweden earlier this season, when he played a leading part in his country's victory.

GORDON TURNER (Inside-forward): A Yorkshireman from Doncaster, Turner signed professional for Luton on release from the Navy in 1950. A difficult player to dispossess, Turner, normally a prolific marksman and the club's leading goalscorer from 1953 to 1958, has not been able to gain a regular place this campaign. Has played for the Football League.

TONY GREGORY (Outside-left): An England Youth international, Gregory played with Bedfordshire's youth team before joining Luton. Originally an inside-forward, he has played on the left wing since the middle of last season. Became a full time professional when he completed his apprenticeship at a local works earlier this year.

ARSENAL

Colours—Shirts: Red, White Sleeves and Collars. Shorts: White
Stockings: Blue, White Rings, White Tops.



LUTON TOWN

Colours—Shirts: White. Shorts: Black. Stockings: Black, White Tops.

LUTON TOWN BATTLE ON-AND WIN- AGAINST THE ODDS

Jottings by Spectator

BEFORE any more hours tick away, and before the memory of what has already happened as this mid-season holiday periods tends to grow dim, it is a privilege and pleasure to wish those who peruse this programme, and those who ought to do so, the compliments of the season. Time flies. We have turned into the second half of the campaign and after today Fulham will be one club we have not met this term.

Ideas seem to be changing in respect of this mid-season holiday and football. The fixtures for Christmas Day have been cut to little more than nothing, which means that so far as the majority of the players of the big clubs are concerned, seldom has Christmas Day been so good. Put in another way, the festive period is not so heavy with fate as it used to be. With the foregoing remarks—including the good wishes—the name of Luton Town is linked.

As the system which governs the arrangements of the fixtures of the big clubs is a carefully kept secret, I have no means of knowing how the people responsible make up their minds about who plays who from week to week, and in what order.

For the time being, however, it seems to be agreed that Arsenal and Luton Town shall work off their home and away engagements at this period of the year. It was so last season—the other way round, of course—and I need scarcely remind you that on the twenty-sixth of December a year ago there was a nine goal game at Kenilworth Road. Luton got six of them, to become the only club which ran up to half a dozen against Arsenal throughout the season. By way of contrast, Arsenal won the return match on the following day by just one Jimmy Bloomfield goal.

Unbelievable Experience

Strange things happen in these holiday games. One almost unbelievable experience befell Luton Town on Boxing Day some thirty-two years ago. In a Third Division match at Northampton, Luton held a lead of five goals when they took the half-time breather. In the second half Northampton scored six and won the match.

That turnabout has a place among the curiosities of the sport. Here is one of a different kind. Luton now bring to Highbury, for the first time, a record, of sorts, so far as top class football is concerned. Would you like to have a guess as to what this is, without reading any further? Anyway, here is the answer. From the end of last season, when Portsmouth went down, Luton have stood as the only club never to be relegated from the First Division.

That touches a delicate topic, so we'll make a quick switch for a paragraph or two, with penalty kick failures as the topic. We often chatter about penalty kick failures which have had tragic effects on the clubs concerned. There is another side to that story which occurred to me the other day as my mind travelled backwards—what a penalty kick failure can mean to the clubs not directly concerned.

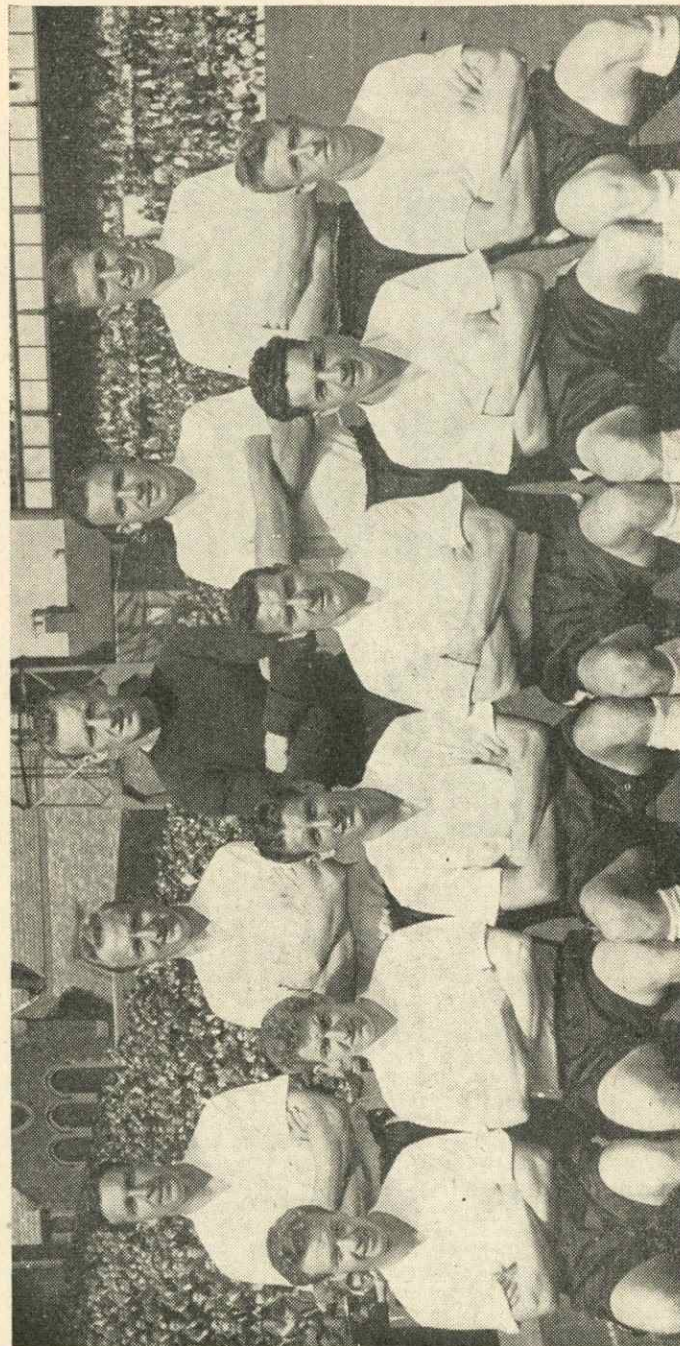
The stories connected with such failures would make up a pretty bulky book. In it would be a paragraph with Arsenal concerned. If Cardiff City had scored a goal from the penalty spot against Birmingham in the last match of the 1923-24 season they would have had one top class championship to their credit, and Huddersfield Town would not have gained the first of their three in a row championships. Arsenal would have had that hat-trick all to themselves.

That brings me to a penalty-kick incident which affected the future of two clubs with which we have close interest just now—Luton in the League sense and Rotherham United from the Cup angle.

Equal Points

At the end of the 1954-55 season, Luton climbed into the First Division in company with Birmingham City. These two clubs, and Rotherham United as well, finished with an equal number of points. If one shot from the penalty spot taken by the centre-half of Rotherham in the last match of the season, had gone home, instead of being saved by the Port Vale goalkeeper, Rotherham would have been on Arsenal's First Division fixture list, and the rise of Luton to the First Division would have been delayed.

(continued on page 16)



LUTON TOWN
Standing: R. Morton, S. Dunne, R. Baynham, F. Hawkes, D. Pacey.
Seated: W. Bingham, J. Kilgannon, J. Groves, A. Brown, G. Cummins, A. Gregory.

GREAT NAMES OF ARSENAL



BOB JOHN

SOME years ago in an Arsenal programme, Remembrancer wrote these words in describing Bob John: "He was the personification of everything good in a footballer. A great player, a man of good, even temperament and a first class club man. No club could ever wish for a better servant."

Bob was on the books of Arsenal from 1922 to 1938 and played the amazing number of 529 games—421 in the League, 37 Cup-ties, 44 London Combination and 27 other matches. In addition he played fifteen times for his native Wales. He was a most versatile player, Bob's first League match was at Newcastle in October, 1922. A little less than ten years later, having become a famous full-back and half-back, he took his place in an Arsenal Cup Final side at outside-left again against Newcastle in the much-discussed "over the line" final. Bob John scored our goal the first time up until then that a side scoring first lost the final. He played regularly for Arsenal until 1934-35. It was a sad day when Bob John left Highbury and his countless friends. He was, in all conscience, a "great" Arsenal man.

APPEARANCES & GOALSCORERS

Up to and including 12th December

Goals scored are given in brackets after the number of appearances.

FOOTBALL LEAGUE

Wills	21	Henderson	14 (3)
Dodgin	19	Standen	14
Bloomfield	19 (5)	Docherty	10
McCullough	18	Charles	9
Barnwell	17 (6)	Kelsey	7
Clapton	17 (6)	Petts	6
Groves	17 (1)	Ward	4
Haverty	17 (5)	Evans	3
Herd	17 (10)	Julians	2

FOOTBALL COMBINATION

Nutt	18 (2)	Goy	5
Magill	17	Ashberry	4
O'Neill	17 (6)	Henderson	4 (8)
Snedden	16	Strong	4 (1)
Goulden	14 (1)	Young	4
Julians	12 (8)	Barnwell	3
Petts	12	McCullough	3 (1)
Clapton (D. P.)	11 (5)	M. Moore	3
Meldrum	10	Standen	3
Everitt	10 (3)	Goring	2
Hughes	8	Bacuzzi	1
Ward	8 (2)	Dodgin	1
Kelsey	7	Evans	1
		Hinton	1

METROPOLITAN LEAGUE

Head	17 (11)	Clarkson	2
Bacuzzi	14	D. Heard	2 (1)
Hinton	13 (6)	R. Jonson	2 (2)
Scurr	13 (2)	Neill	2
Young	13	Snedden	2
Everitt	12 (2)	M. Fairchild	1
Goy	11	B. Gibbs	1
Strong	11 (7)	B. Gould	1
Hughes	10	M. Henderson	1
Ashberry	8 (1)	Herd	1
Goring	8	M. Holliday	1
Morton	8	G. Hughes	1
Clapton (D. P.)	6 (3)	M. Moore	1
McKechnie	5	H. Morley	1
Read	5	P. Nottage	1
W. Belger	4	Petts	1
D. Court	4 (1)	R. Piper	1
R. Griffiths	4	B. Smithson	1 (1)
G. Keith	4	J. Twynholm	1
Meldrum	4 (1)	R. Warman	1
M. Clauson	3 (1)	J. Watson	1
O'Neill	3 (2)	D. Woods	1
T. Anderson	2 (3)		

SOUTH-EAST COUNTIES LEAGUE

B. Gould	15 (7)	A. Bellett	1
R. Piper	15 (2)	F. Cavener	1
R. Smithson	13	R. Dawe	1
T. Anderson	12 (11)	J. Eldridge	1
R. Griffiths	12	C. Forwell	1
McKechnie	12	G. Gaston	1
D. Court	10 (11)	A. Grace	1
Read	10 (3)	G. Green	1
J. Watson	10	J. Henshaw	1
R. Fort	9 (2)	F. Hilling	1
W. Meadows	9 (10)	R. Lipscombe	1 (2)
W. Belger	8	Meldrum	1
T. Tapping	8 (2)	G. Milligan	1
G. Steels	7 (2)	B. Roughton	1
G. Spring	4	Snedden	1
R. Davis	3 (1)	D. Templeman	1
G. Keith	3	G. Thomas	1
Morton	3	G. Turner	1
P. Nottage	3 (3)	R. Warnes	1
A. Rouse	2		

FOOTBALL LEAGUE—DIVISION I

Home					Away				
P	W	D	L	F A		W	D	L	F Apts
22	6	4	1	26 11	Tottenham	5	4	2	22 13 30
22	6	3	2	21 17	Preston N.E.	6	2	3	25 19 29
22	9	1	1	34 13	Wolves	4	1	6	24 29 28
22	8	0	3	34 17	Burnley	4	3	4	18 18 27
22	8	2	1	28 15	Blackburn	4	1	6	15 19 27
22	8	0	2	26 11	West Ham	4	3	5	18 28 27
22	8	1	3	25 16	Fulham	4	2	4	19 27 27
22	7	3	1	29 8	Sheffield Wed.	3	1	7	13 17 24
22	7	1	3	33 20	Man. Utd.	2	4	5	21 24 23
22	6	1	4	25 15	West Brom. A.	2	5	4	16 20 22
22	6	3	3	20 15	Bolton W.	3	1	6	9 13 22
22	5	2	4	21 17	Newcastle	4	1	6	23 29 21
22	4	1	5	22 27	Chelsea	5	2	5	21 23 21
22	5	2	4	26 23	Man. City	4	0	7	21 27 20
22	4	4	3	20 18	Blackpool	3	1	7	13 18 19
22	4	2	5	17 20	ARSENAL	3	3	5	20 26 19
22	6	3	2	24 11	Everton	0	3	8	11 30 18
22	4	4	3	19 17	Leicester	2	2	7	16 32 18
22	5	2	4	17 18	Notm. Forest	2	1	8	8 24 17
22	5	2	3	23 18	Leeds Utd.	3	6	16	30 16
22	4	4	3	20 18	Birmingham	1	1	9	9 26 15
22	3	2	7	12 20	LUTON TOWN	1	4	5	12 24 14

FOOTBALL COMBINATION—DIV. I

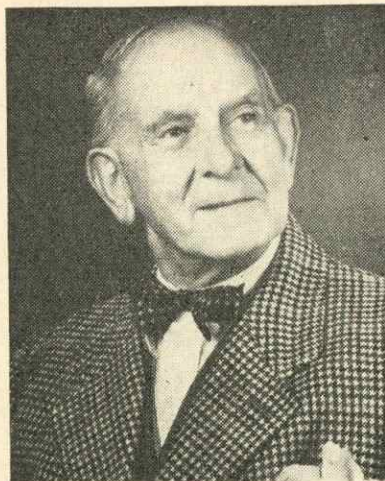
P.	W.	D.	L.	F.	A.	Pts.
Chelsea	18	13	2	3	46	17 28
Brighton & Hove Albion	19	10	8	1	44	19 28
Tottenham Hotspur	18	12	2	4	47	23 26
Leyton Orient	19	9	8	2	36	22 26
ARSENAL	19	11	1	7	39	24 23
Bournemouth & B'combe	18	7	4	7	27	21 21
Leicester City	18	7	3	8	36	26 19
Bristol City	17	8	3	7	35	26 17
Portsmouth	18	8	1	9	41	44 17
Charlton Athletic	18	7	3	8	34	40 17
West Ham United	18	7	3	8	31	47 17
Ipswich Town	17	5	5	7	35	43 15
Nottingham Forest	18	5	3	10	23	41 13
Birmingham City	18	5	3	10	34	32 13
Southampton	18	5	3	10	26	43 13
Swansea Town	19	5	2	12	30	42 12
Luton Town	18	3	5	10	28	44 11
Southend United	18	4	2	12	15	53 10

METROPOLITAN LEAGUE

P.	W.	D.	L.	F.	A.	Pts.
Chelsea	17	11	2	4	46	24 24
Canterbury City	18	10	4	4	43	28 24
Luton Town	18	10	2	6	48	36 22
Headingley United	18	10	2	6	40	44 22
Dunstable Town	15	9	3	3	45	29 21
ARSENAL	20	7	6	7	51	34 20
Tonbridge	16	8	3	5	31	24 19
Bedford Town	19	9	1	9	32	48 19
Guildford City	17	6	6	5	41	27 18
Didcot Town	15	8	2	5	37	29 18
Fulham	17	7	4	6	47	41 18
Eastbourne United	17	5	8	4	40	37 18
Brighton & Hove A.	19	6	4	9	33	37 16
West Ham United	18	7	2	9	35	35 16
Newbury Town	13	6	1	6	33	24 13
Dartford	18	5	3	10	38	45 13
Windsor & Eton	14	6	1	7	31	34 13
Haywards Heath	17	4	3	10	19	47 11
Hastings United	16	3	2	11	22	47 8
Crawley Town	16	2	1	13	20	52 5

SOUTH-EAST COUNTIES LEAGUE

	P.	W.	D.	L.	F.	A.	Pts.
Chelsea	14	12	2	0	66	9	26
ARSENAL	18	11	2	5	67	22	24
Crystal Palace	15	8	4	3	57	20	20
Portsmouth	16	9	2	5	47	29	20
Brentford	14	8	2	4	23	20	18
Charlton Athletic	17	9	0	8	50	42	18
Fulham	15	6	4	5	51	36	16
West Ham United	14	6	2	6	35	32	14
Millwall	14	4	6	4	16	19	14
Leyton Orient	11	6	1	4	35	32	13
Bexleyheath	17	5	3	9	25	57	13
Luton Town	15	5	2	8	30	47	12
Tottenham Hotspur	12	3	1	8	21	43	7
Watford	13	1	1	11	18	44	3
Southend	15	1	0	14	16	83	2



JACK CAMPBELL

MANY of our older supporters will recognise this recent photograph of Jack Campbell, who for so many years was the Clerk of Works at this stadium. He did some very valuable work during his active employment with the club, and particularly in the early days of the first World War when, as newcomers to Highbury, we had many problems to face in the way of construction and lay-out of the ground.

Jack will be 90 years of age next July and although he has been retired for many years he still lives just opposite the ground and shows a lively interest in all Arsenal activities.

We are sure that all our supporters would wish to join us in hoping that he enjoyed a Happy Christmas and that he will enjoy the best of health in his 90th year, and for many more to come.

ARSENAL MATCHES

FOOTBALL LEAGUE

Saturday, 12th December, lost to Burnley (Home) 2-4. (Half-time: 2-0).

Team: Kelsey; Wills, McCullough; Groves, Dodgin, Ward; Clapton, Barnwell, Henderson, Bloomfield, Haverty.

Goalscorers: Haverty, Bloomfield.
Referee: Mr. A. W. Sparling (Grimsby).

FOOTBALL COMBINATION

Saturday, 12th December, drew with Birmingham City (Away) 1-1. (Half-time: 0-1).

Team: M. Moore; Magill, Meldrum; Goring, Snedden, Petts; Everitt, Goulden, O'Neill, Julians, Nutt.

Goalscorer: Everitt.
Referee: Mr. R. W. Croome (Newport).

METROPOLITAN LEAGUE

Saturday, 12th December, beat Headington United (Home) 7-1. (Half-time: 4-0).

Team: Goy; Bacuzzi, Young; Neill, Hughes, Ashberry; Heard, Head, Strong, Scurr, T. Anderson.

Goalscorers: Head 3, T. Anderson 2, Heard, Scurr.
Referee: Mr. R. A. L. Williams (Essex).

SOUTH-EAST COUNTIES LEAGUE

Saturday, 12th December, beat Southend (Away) 16-1. (Half-time: 5-1).

Team: McKechnie; Read, J. Henshaw; B. Gould, R. Smithson, W. Belger; R. Lipscombe, Morton, D. Court, W. Meadows, T. Tapping.

Goalscorers: W. Meadows 8, D. Court 2, Morton 2, R. Lipscombe 2, T. Tapping, B. Gould.
Referee: Mr. E. Harvey (London).

FRIENDLY MATCHES

Wednesday, 2nd September, drew with R.A.F. Apprentices (Halton) (Away) 2-2. (Half-time: 2-1).

Team: McKechnie, I.; F. Read, R. Griffiths; G. Keith, R. Smithson, T. Tapping; G. Steels, D. Court, B. Gould, R. Piper/R. Dawes, T. Anderson.

Goalscorer: T. Anderson 2.

Wednesday, 9th September, beat Kings Langley (Away) 4-0. (Half-time: 2-0).

Team: McKechnie, I.; J. Read, Bacuzzi, D.; Goring, Young, A., T. Tapping; Hinton, T., Everitt, M., Clapton, D. P., Morton, A., A. Nottage.

Goalscorers: Everitt 3, Clapton, D. P.

Wednesday, 23rd September, beat P.S.V. Eindhoven (Away) 4-1. (Half-time: 2-1).

Team: Standen/Kelsey; Wills, McCullough; Groves, Dodgin, Docherty; Clapton, Barnwell, Herd, Bloomfield, Haverty.

Goalscorers: Herd 2, Groves, Bloomfield.
Referee: Mr. L. Horn (Amsterdam).

Here Are The Answers

To questions on page 4.

- 1.—That when Wilfred Minter, playing in a replayed tie for St. Albans City on November 22, 1922, scored seven goals against Dulwich Hamlet, who won by 8-7!
- 2.—Arthur Rowley, who was in the Second Division championship-winning sides of Fulham in 1948-49 and of Leicester City in 1953-54 and 1956-57, and of the Shrewsbury Town team promoted from the Fourth Division in 1958-59.
- 3.—Only two—William Poyntz (Leeds United) v. Leicester City on February 20, 1922, and William Holmes (Southport) v. Carlisle United on October 30, 1954.
- 4.—That of Southampton in the Second Division in season 1948-49. On the evening of April 2 they had a lead of eight points over the second club, but they finished third to Fulham and West Bromwich Albion!
- 5.—That of Millwall against Bradford on April 25, 1959. It comprised Ray White (17), David Harper (19), and Leon Vaesson (18).
- 6.—Those when Leicester City transferred Calvert, Eggleston, Hartley, Osborne, and Cheney to Watford on January 28, 1948; when Aston Villa transferred Godfrey, Shell, Beresford, and Lunn to Birmingham City on September 21, 1946; and when West Bromwich Albion transferred Whale, O'Neill, Forrester, and Dunsmore to Southend United on April 28, 1959.

Football League Division I

Fixtures

1959	Opponents	Venue	F.A.
Aug. 22	SHEFFIELD WED.	HOME	0 1
" 26	Nottingham Forest	Away	3 0
" 29	Wolverhampton W.	Away	3 3
Sept. 1	NOTTINGHAM F.	HOME	1 1
" 5	TOTTENHAM H.	HOME	1 1
" 9	Bolton Wanderers	Away	1 0
" 12	MANCHESTER CITY	HOME	3 1
" 15	BOLTON WANDERERS	HOME	2 1
" 19	Blackburn Rovers	Away	1 1
" 26	BLACKPOOL	HOME	2 1
Oct. 3	Everton	Away	1 3
" 10	Manchester United	Away	2 4
" 17	PRESTON N. E.	HOME	0 3
" 24	Leicester City	Away	2 2
" 31	BIRMINGHAM CITY	HOME	3 0
Nov. 7	Leeds United	Away	2 3
" 14	(1) WEST HAM UTD.	HOME	1 3
" 21	Chelsea	Away	3 1
" 28	WEST BROM. A.	HOME	2 4
Dec. 5	(2) Newcastle United	Away	1 4
" 12	BURNLEY	HOME	2 4
" 19	Sheffield Wednesday	Away	1 5
" 26	LUTON TOWN	HOME
" 28	Luton Town	Away
1960			
Jan. 2	W'HAMPTON W.	HOME
" 9	(3) Rotherham United	Away
" 16	Tottenham Hotspur	Away
" 23	Manchester City	Away
" 30	(4)
Feb. 6	BLACKBURN ROVERS	HOME
" 13	Blackpool	Away
" 20	(5) EVERTON	HOME
" 27	NEWCASTLE UTD.	HOME
Mar. 5	Preston North End	Away
" 12	(6) LEICESTER CITY	HOME
" 19	Burnley	Away
" 26	(S.F.) LEEDS UTD.	HOME
Apr. 2	West Ham United	Away
" 9	CHELSEA	HOME
" 15	FULHAM	HOME
" 16	Birmingham City	Away
" 18	Fulham	Away
" 23	MANCHESTER UTD.	HOME
" 30	West Bromwich Albion	Away
May 7	(Final)		

(1), (2), (3), (4), (5), (6)—F.A. Cup round dates

Football Combination

1959	Opponents	Venue	F.A.
Aug. 22	Nottingham Forest	Away	3 2
" 25	LEYTON ORIENT	HOME	2 1
" 29	PORTSMOUTH	HOME	0 1
Sept. 5	Tottenham Hotspur	Away	4 2
" 12	Brighton & Hove Albion	Away	0 1
" 19	SWANSEA TOWN	HOME	2 0
" 26	Ipswich Town	Away	7 1
Oct. 3	LUTON TOWN	HOME	5 3
" 10	BIRMINGHAM CITY	HOME	1 0
" 17	Southampton	Away	3 0
" 24	CHELSEA	HOME	1 2
" 31	West Ham United	Away	1 1/2
Nov. 7	SOUTHEAST UNITED	HOME	3 0
" 14	Leicester City	Away	0 3
" 21	BRISTOL CITY	HOME	1 2
" 28	Charlton Athletic	Away	0 3
Dec. 5	SOUTHAMPTON	HOME	4 0
" 12	Birmingham City	Away	1 1
" 19	NOTTINGHAM F.	HOME	1 0
1960			
Jan. 2	Portsmouth	Away
" 16	TOTTENHAM H.	HOME
" 23	BRIGHTON & H. A.	HOME
Feb. 6	Swansea Town	Away
" 13	IPSWICH TOWN	HOME
" 20	Luton Town	Away
" 27	Chelsea	Away
Mar. 5	WEST HAM UTD.	HOME
" 12	Southend United	Away
" 19	LEICESTER CITY	HOME
" 26	Bristol City	Away
Apr. 2	CHARLTON ATHLETIC	HOME
" 16	Bournemouth & B.A.	Away
" 18	BOURNEMTH. & B.A.	HOME
" 30	Leyton Orient	Away

Metropolitan League

1959	Opponents	Venue	F.A.
Aug. 22	Eastbourne United	Away	1 1
" 29	FULHAM	HOME	2 3
Sept. 5	Canterbury City (Pro Cup)	Away	1 3
" 12	FULHAM	HOME	2 3
" 16	Dartford	Away	4 0
" 23	Chelsea	Away	0 1
" 26	Luton Town	Away	5 0
" 30	WEST HAM UNITED	HOME	1 3
Oct. 3	DUNSTABLE TOWN	HOME	1 0
" 7	LUTON TOWN	HOME	2 2
" 10	BEDFORD TOWN	HOME	7 0
" 17	Tonbridge (Challenge Cup)	Away	6 3
" 21	Didcot Town	Away	1 1
" 24	BRIGHTON & H. A.	HOME	5 1
" 31	West Ham United	Away	1 4
Nov. 7	Tonbridge	Away	0 2
" 14	Dunstable Town	Away	2 2
" 21	Windsor & Eton	Away	1 2
" 28	Guildford City	Away	2 2
Dec. 5	HASTINGS UNITED	HOME	3 2
" 12	HEADINGTON U.	HOME	7 1
" 19	DARTFORD	HOME	4 4
" 26	Brighton & Hove Albion	Away
1960			
Jan. 9	Hastings United	Away
" 16	Newbury Town	Away
" 23	Bedford Town	Away
" 30	DIDCOT TOWN	HOME
Feb. 6			
" 13	CRAWLEY TOWN	HOME
" 20	Canterbury City	Away
" 27			
Mar. 5	Headington United	Away
" 12	EASTBOURNE UNITED	HOME
" 19	HAYWARDS HEATH	HOME
" 26	Crawley Town	Away
Apr. 2	TONBRIDGE	HOME
" 9	CANTERBURY CITY	HOME
" 16	GUILDFORD CITY	HOME
" 23	Haywards Heath	Away
" 30	WINDSOR & ETON	HOME
" 30	NEWBURY TOWN	HOME
Undated	CHELSEA	HOME

All Home matches are played at Grovelands.

While we are about it, and on the same topic, could you tell, off-hand, the year when the penalty kick regulation first came into force? The answer is 1891. During the intervening years there have been several minor changes in the regulations regarding penalty kicks—such as restricting the movement of goalkeepers until the ball is kicked, and even to this day some of us are not wholly convinced that the ideal regulations have been framed. That is by the way.

Being in the quiz mood, could you give the answer to a very difficult one? Which football club claims the distinction of being the first to score a goal from the spot when offences inside the box were first punishable by a penalty kick to the other side? There is a current clue to help, but to save the possibility of another headache here is the answer.

On the first day of the season in which the penalty kick law came into operation Rotherham played a match at Darlington. The game started at eleven a.m. and soon after the kick-off a member of the Rotherham team took the spot kick, and into the net went the ball. The claim that he was the first to take a penalty kick in a real match has not been disputed. **What A Life!**

I shall have another opportunity of making further reference to Rotherham

United in an Arsenal programme nearer the date of the third round Cup-tie. So back to Luton. The story of this club, in many respects similar to that of Rotherham United, is of a gallant struggle to the top with the odds all against them.

Whether the claim that Luton was the first club in the South to engage professional footballers doesn't matter a lot. A case in that particular connection can be made for Woolwich Arsenal. Anyway, the Luton minute book, which goes back to 1890, records that it was agreed to sign on a player named Whitby at five shillings a week.

Hang the expense seems to have been the slogan thereabouts. Later, a whole team was signed on—each player receiving half-a-crown a week plus sixpence extra for away matches. That rate of pay was advanced considerably in the case of a player named Julian—from Woolwich Arsenal. He was also appointed captain.

Leaving the old Southern League in the hope of being elected to the Second Division of the Football League, Luton failed in the first attempt, being left, roughly, high and dry for a spell. But they did squeeze into the Second Division in 1897. Soon they were out of it again—resigning because cash was not sufficiently plentiful to cover the cost of the long railway journeys.

HALF-TIME SCOREBOARD

FIRST DIVISION

A Birmingham v. West Ham	F Leeds v. Tottenham H.
B Blackpool v. Blackburn	G Leicester v. Preston N.E.
C Bolton v. Wolverhampton	H Man. Utd. v. Burnley
D Chelsea v. Newcastle	J Sheffield W. v. Fulham
E Everton v. Man. City	K W.B.A. v. Nottingham F.

SECOND DIVISION

L Charlton v. Liverpool	N Leyton O. v. Portsmouth
M Ipswich v. Brighton	P Rotherham v. Middlesbro'

THIRD DIVISION

Q Q.P.R. v. Colchester	R Southend v. Brentford
------------------------------	-------------------------------

FOURTH DIVISION

S Gillingham v. Crystal P.	T Millwall v. Stockport C.
U Watford v. Northampton	