



BLUES *News* **THE OFFICIAL PROGRAMME OF** **BIRMINGHAM CITY FOOTBALL CLUB**

SEASON 1959-60

PRICE THREEPENCE

TOP FOR QUALITY

"THE BLUES"

and

WIMBUSH'S

BREAD and CONFECTIONERY

A. D. WIMBUSH & SON LTD.



Hercules

JAVELIN

for **JOY**

THE LATEST SPORTS MACHINE
at NEW REDUCED PRICE!

SEE YOUR LOCAL DEALER TO-DAY

BIRMINGHAM CITY FOOTBALL CLUB LIMITED

Reg. Offices : ST. ANDREW'S GROUND, BIRMINGHAM 9. 'Phone : VIC 0101. 'Grams : "Heathen, B'ham"

Board of Directors :

H. MORRIS (*Chairman*). D. F. WISEMAN (*Vice-Chairman*). H. DARE. W. H. DARE.
L. J. MORRIS. S. F. L. RICHARDS. E. COX. J. F. WISEMAN.

Hon. Medical Officer : DR. E. GREGORY.

Officials :

Team Manager : A. BEASLEY.

Secretary : W. C. ADAMS.

BIRMINGHAM CITY v. LUTON TOWN

SATURDAY, 7th NOVEMBER, 1959

KICK-OFF 3-0 P.M.

A HARD LESSON

GOOD AFTERNOON—We have had some tense clashes with Luton Town over the years, but none has been more urgent than this afternoon's. We both badly need points if we are to emerge from our present predicament, and the stage is set for another tough struggle.

At Highbury last week-end we expected a hard fight. We had one, too, and but for the fact that the Gunners were handed two goals on a plate, it could have been a different story. You can't hand out presents like that and expect to get away with it. It clearly was not Blues' day. But we have had our "inquest" and there is no point in recapping at this stage. It was a hard lesson, and we paid for our errors.

While we were suffering at Highbury, Luton were collecting a point from their home game with Burnley as a result of their 1-1 draw—their first point since September 19th, when they defeated Nottingham Forest by the only goal of the match at Kenilworth Road. Until last week Luton had been on the losing end for five successive games.

It would have been nice to welcome Manager Syd Owen back to St. Andrew's in happier times. The former Blues' player, who hung up his boots after last season's Cup Final, and after being named Player Of The Year, is soon sampling the anxieties of the managerial chair.

TALKING POINTS

by the Editor

HELLO—As we've said before, next Wednesday's visit of the Belgians, St. Gilloise in the Fairs Cities Cup Semi-final, second leg, could have great possibilities. It is on the cards that the winners of the Fairs Cup will eventually meet the European Cup Holders. And Blues have more than a reasonable chance of qualifying for the Fairs Cup Final. Get here early!

From the heights to the depths. It's a short step, and no club is more familiar with its uncertain way than Luton Town, last season's Cup Finalists.

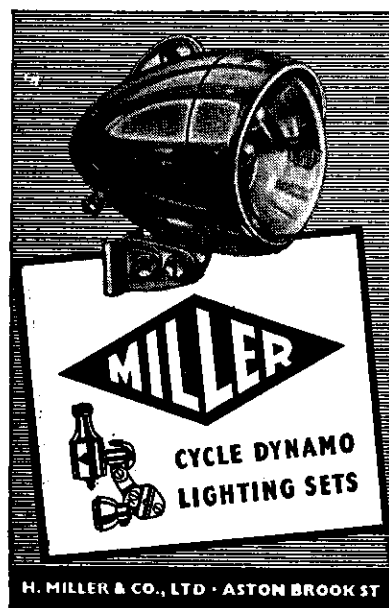
On their way to their first visit to Wembley, the Hatters disposed of Leeds United* Leicester City, Ipswich Town, Blackpool and Norwich City.

When Luton were here last August, Groves got the one and only goal, but at Kenilworth Road we turned the tables, Dick Neal getting the winning goal in the fourth minute.

The previous season saw the Hatters get the better of our meetings, winning 3-0 on their own ground, and taking a point in a 1-1 draw at St. Andrew's.

While our seniors were taking it on the chin at Highbury last week, the Football Combination team were sharing four goals with Ipswich at St. Andrew's, all goals coming in the second half.

Our Birmingham League side, challenging for Division One honours, were held to 1-1 by Hereford United.



OUR VISITORS

LUTON TOWN

Ground : Kenilworth Road.

Record Attendance : 30,069 (v Blackpool in 1959).

Colours : White shirts, black shorts.

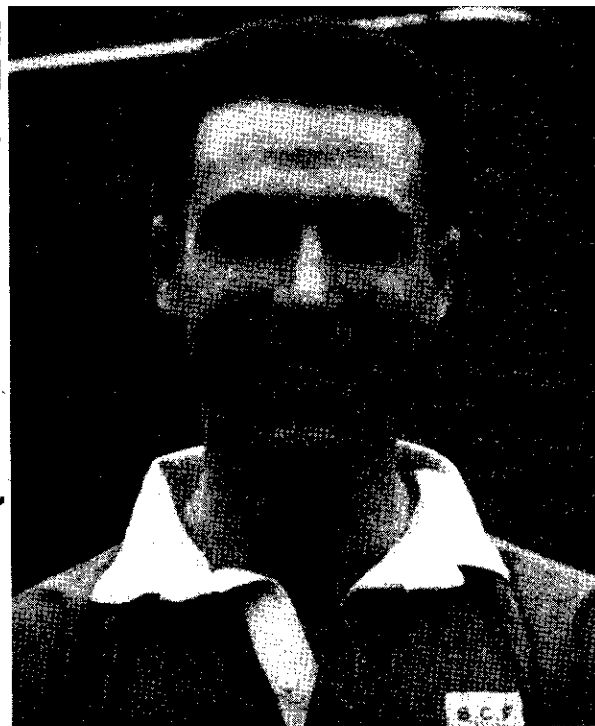
Honours: Division III South Champions, 1936-37.

Manager : Syd Owen.

Last Season's Marksmen : Brown 20, Turner 14, Bingham 8, Cummins 6, Adam 4, Morton 4, Pacey 4, Gregory 3, Groves 2, Hawkes 1, McGuffie 1, McLeod 1.

Last Season's Playing Record :

P.	W.	L.	D.	F.	A.	Pts.
42	12	17	13	68	71	37



GEORGE ALLEN

FORMERLY on Coventry City books as an amateur. Came to St. Andrew's from Army Football in June, 1952.

Became professional in the December of that year, and made his League debut against Nottingham Forest on Easter Monday, 1954, at St. Andrew's.

LAST WEEK'S LINE-UP

ARSENAL 3, BIRMINGHAM CITY 0

Arsenal : Kelsey ; Willis, McCullough ; Groves, Dodgin, Petts ; Henderson, Barnwell, Herd, Bloomfield, Haverly.
Birmingham City : Schofield ; Farmer, Allen ; Watts, Smith, Neal ; Hooper, Gordon, Orritt, Barrett, Taylor.
Referee : K. Dagnall (Bolton).
Scorers : Barnwell, Herd and Henderson for Arsenal.

Football Combination.

BIRMINGHAM CITY RESERVES 2, IPSWICH TOWN RESERVES 2.

Birmingham City Reserves : Draper ; Wright, Partridge ; Cox, Foster, Beard ; Hellawell, Jones, Jackson, Larkin, Bird.
Ipswich Town Reserves : Arnold ; Garrett, Beacon ; Pelling, Laurel, Elsworth ; Berry, Millward, Acres (D), Thrower, Owen.
Referee : R. Locke (Coventry).
Scorers : Jones and Larkin for Birmingham. Cox (o.g.) and Berry for Ipswich.

Birmingham League.

BIRMINGHAM CITY 'A' 1, HEREFORD TOWN RESERVES 1

Birmingham City 'A' : Hooper ; Kennea, Pritchard ; Hennessy, Small, Dunn ; McLaughlin, Hinton, Powell, Hume, Rudd.
Hereford Town Reserves : Sewell ; Layton, Watts ; Rook, Oliver, Horton ; Conlos, Edwards, James, Walton, Evans.
Referee : K. H. Burns (Dudley).
Scorers : McLaughlin for Birmingham. Evans for Hereford.

Warwickshire Combination.

STRATFORD TOWN RESERVES 1, BIRMINGHAM CITY 'B' 1

Birmingham City 'B' : Bolton ; Shufflebottom, Boucher ; Gerry, Rushton, Wood ; Lancashire, Farrell, Abbott, Hartland, Allen (H).
Scorer : Farrell for Birmingham.

KEY TO SCORE BOARD

Key	Fixture	Score	Key	Fixture	Score
A	LEEDS UNITED ARSENAL		J	CHELSEA BLACKBURN R.	
B	BURNLEY WOLVES		K	LUTON TOWN RES. BIRMINGHAM C. RES.	
C	LIVERPOOL ASTON VILLA		L	LEICESTER CITY SHEFFIELD W.	
D	W.B. ALBION BLACKPOOL		M	CARDIFF CITY SWANSEA TOWN	
E	WEST HAM UNITED MANCHESTER CITY		N	WALSALL TORQUAY UNITED	
F	MANCHESTER U. FULHAM		O	ROTHERHAM U. BRIGHTON & H.A.	
G	TOTTENHAM H. BOLTON WAND.		P	SHREWSBURY T. COVENTRY CITY	
H	NEWCASTLE U. EVERTON		R	NORWICH CITY SWINDON TOWN	
I	PRESTON N.E. NOTTINGHAM F.		S	BURY WREXHAM	

EVERTON

v.

BIRMINGHAM CITY

Saturday, 14th Nov.

CHEAP TRIP

TO

LIVERPOOL

RETURN 12/6 FARE

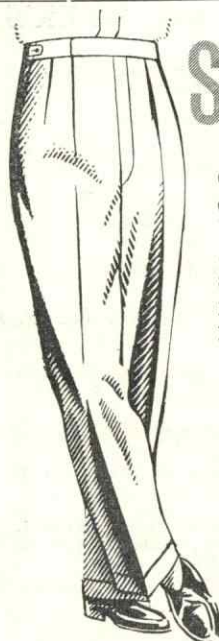
BIRMINGHAM New St. dep. 10.30 a.m.
LIVERPOOL Lime St. arrive 1.0 p.m.

Return same day at 6.5 p.m.

Light Refreshments available

Further Information from Stations and
Official Railway Agents.

BRITISH RAILWAYS



Supaslaks

Cut and tailored in our own workrooms from Yorkshire all wool cloths, Supaslaks give you style and quality at the lowest possible price. They're your best buy to-day.

★ 1 STAR 55/-

★★ 2 STAR 65/-

★★★ 3 STAR 75/-

One of the many outstanding values in clothing obtainable only at

Foster Brothers

MEN'S YOUTHS' AND BOYS' OUTFITTERS SINCE 1876

BRANCHES THROUGHOUT BIRMINGHAM & DISTRICT

M & B

It's Marvellous Beer

BIRMINGHAM CITY

Johnny SCHOFIELD

Brian FARMER
2

George ALLEN
3

Johnny WATTS
4

Trevor SMITH
5

Dick NEAL
6

Harry HOOPER
7

Bryan ORRITT
9

Brian TAYLOR
11

Johnny GORDON
8

Jim BARRETT
10

Referee :

Mr. D. W. SMITH
(Stonehouse, Glos.)



Linesmen :

Mr. R. J. EDWARDS (Red Flag)
Mr. R. L. J. HAMBLIN
(Yellow Flag)

George CUMMINS
10

~~Bob MORTON~~
8

Tony GREGORY
11

Dave PACEY
9

Billy BINGHAM
7

John GROVES
6

Terry KELLY
5

Allan BROWN
4

Alan DANIEL
3

Seamus DUNNE
2

Ron BAYNHAM

LUTON TOWN

THE

E. T. S.

ELECTRICAL TRADES SUPPLY LTD.

Albion Buildings, Vesey St & Loveday St. Birmingham 4

WHOLESALE ELECTRICAL FACTORS

ASTon Cross 5671-8 (8 lines)

Who's Who at Luton

RON BAYNHAM (goalkeeper), began his career with Worcester City. He attracted a great deal of attention and was soon signed by Luton Town for a small fee in 1951. He quickly replaced Bernard Streten and in 1956 gained caps against Ireland, Denmark and Spain.

SEAMUS DUNNE (right-back), has recently regained his first team place from Bernard McNally, who had held the position for the previous twelve months. This lightly built full-back joined Luton from Shelbourne in 1950. He was a regular for Eire until the start of last season when McNally, who also joined the club from Shelbourne, was in top form.

KEN HAWKES (left-back), was spotted playing in North-East junior football. He had to wait six years for his big chance. He was one of the leading lights in Luton's Cup progress last season—his first full term in the League side. Now playing very well.

BOB MORTON (right-half), is back in the half-back line after experiments at centre-forward and in five other positions. A better wing-half than a forward. He is Luton's longest serving player. He joined them in 1944 as an amateur from Waterlows, and two years later signed as a professional. The only honour he has received is an England "B" appearance.

JOHN GROVES (centre-half), has replaced his manager Syd Owen. Formerly a wing-half, he was, however, better known as an inside forward until Bob Morton started moving around. He joined the club on leaving school. He is the son of the former Derby County and Portsmouth inside forward.

DAVE PACEY (left-half), was expected to take over from Syd Owen, but now Luton have had second thoughts about his best position. He came into the side when Reg Pearce moved to Sunderland a couple of years ago. He made his name with Hitchin Town and at one time Arsenal were keen on his services. His father, a former Luton player himself, persuaded him to join the Hatters.

BILLY BINGHAM (outside-right), one of the fastest wingers in the game today is termed by Luton folk as a bargain buy. Luton paid a record fee for him to Sunderland in July, 1958, but already he has proved it money well spent. All told, he has appeared in 38 internationals for Ireland.

GORDON TURNER (inside-right), lost his goal-scoring touch last season and at one time it seemed likely that he would be leaving Kenilworth Road. Now back in the first team, he is again linking up well with Billy Bingham. Although a prolific goalscorer he has only managed to gain a Football League appearance.

ALAN BROWN (centre-forward), is a key man in this Luton side. When he is on form then the Luton team automatically "clicks." He began his career with East Fife and moved to Blackpool in 1950. He joined Luton during the 1956-57 season.

GEORGE CUMMINS (inside-left), His clever ball play helped Luton a great deal last season on the way to Wembley. Now he is not quite hitting top form. The Eire international joined Luton from Everton in 1953.

JOHN KILGANNON (outside-left), is currently holding down Luton's problem position. Last season the former Stenhousemuir winger made one appearance for the Luton club. Of late he has replaced Tony Gregory, who held the position in last season's Cup Final.



win draw or lose...
they cheer
THE BLUES

...and **Ansell's**
The Better Beer

ANSSELL'S BREWERY LTD. ASTON, BIRMINGHAM 6

LEAGUE TABLES

DIVISION I												
	P.	W.	L.	D.	Goals		P.					
					F.	A.						
Tottenham H.	15	8	1	6	36	17	22					
Wolves	15	9	4	2	45	29	20					
West Ham U.	15	8	4	3	27	19	19					
Blackburn R.	15	8	4	3	28	21	19					
Preston N.E.	15	8	4	3	33	27	19					
Fulham	15	9	5	1	35	33	19					
Burnley	15	8	5	2	31	29	18					
Arsenal	15	6	4	5	25	22	17					
Manchester C.	15	8	7	0	35	31	16					
Chelsea	15	7	6	2	31	31	16					
Manchester U.	15	6	6	3	35	32	15					
Bolton W.	15	6	6	3	19	17	15					
Sheffield W.	15	6	7	2	20	18	14					
W.B. Albion	15	4	6	5	26	24	13					
Nottingham F.	15	5	7	3	17	21	13					
Everton	15	4	7	4	24	25	12					
Blackpool	15	4	7	4	20	26	12					
Newcastle U.	15	4	8	3	21	30	11					
Leeds United	15	3	7	5	21	33	11					
Leicester City	15	3	7	5	24	40	11					
Birmingham City	15	3	8	4	20	28	10					
Luton Town	15	2	9	4	12	28	8					

LUTON'S RECORD TO DATE

Aug. 22	Everton	(A)	2-2
" 26	Blackpool	(H)	0-1
" 29	Leeds United	(H)	0-1
" 31	Blackpool	(A)	0-0
Sept. 5	Bolton Wanderers	(H)	0-0
" 9	Manchester City	(H)	1-2
" 12	Fulham	(A)	2-4
" 16	Manchester City	(A)	2-1
" 19	Nottingham Forest	(H)	1-0
" 26	Sheffield Wednesday	(A)	0-2
Oct. 3	Wolverhampton Wanderers	(H)	1-5
" 10	West Ham United	(A)	1-3
" 17	Chelsea	(H)	1-2
" 24	West Bromwich Albion	(A)	0-4
" 31	Burnley	(H)	1-1

SUPPORTERS' CLUB NOTES

14th November, Harborne Branch hold a CONCERT at the Junction, High Street, Harborne. Tickets 2/-.
20th November and 11th December, Yardley Wood Branch hold DANCES at the Sherwood. Tickets 2/6.
December 5th, Moseley Branch hold their FOURTH ANNUAL DINNER DANCE at the New Inns, Moseley Road (6.30 p.m., 11.45 p.m.). Tickets 12/-.
Dancing to the Mayfair Players. Spot Prizes.
December 19th, Small Heath Branch also have a DINNER and CONCERT at the Small Heath

Tavern, Coventry Road. Tickets 8/-. Book Now.
December 5th, Sparkbrook Branch hold a CONCERT at the Woodman, South Road, Tickets 2/-.

SEMI-FINAL INTER-CITIES CUP COMPETITION

As already announced we play Union St. Gilloise on Wednesday next, kick-off 7.15 p.m. Do not miss this most important Cup Tie. It is the second leg of the semi-final, and we now should have an excellent chance of progressing to the Final, which will be against either Barcelona or Belgrade. Our match is not all-ticket, but seating tickets are on sale to-day, before and after the game, at the Booking Office, St. Andrew's Street. prices 5/- and 6/- (no restrictions). It will be interesting to note that in Belgrade last week our probable opponents drew one each, and it means that Barcelona could be favourites for the return game. Remember again that Barcelona's forward line includes players like Kocsis, Czibor, Kubala, Martinez and Villa Verde.

FOOTBALL AT ST. ANDREW'S

WEDNESDAY, NOVEMBER 11TH INTER CITIES FAIR CUP COMPETITION SEMI-FINAL (2nd Leg).

UNION SAINT GILLOISE (Belgium)

Kick-off 7.15 p.m.

This Match is NOT All Ticket, and admission to the Terraces can be obtained by the normal payment at Turnstiles.

SATURDAY, 14th NOVEMBER.

FOOTBALL COMBINATION, DIVISION I

LEYTON ORIENT RESERVES

Kick-off 3.0 p.m.

APPEARANCES AND SCORERS

	1st Team Appearances	1st Team Scorers	2nd Team Appearances	2nd Team Scorers		1st Team Appearances	1st Team Scorers	2nd Team Appearances	2nd Team Scorers
ABBOTT	—	—	1	—	LARKIN	6	1	3	2
ALLEN G.	11	—	—	—	MCLAUGHLIN	—	—	9	3
ASTALL	2	—	—	—	MERRICK	2	—	—	—
BARRETT	4	1	—	—	MURPHY	—	—	2	—
BEARD	—	—	11	—	NEAL	14	1	—	—
BIRD	—	—	2	1	ORRITT	12	2	1	—
COX	—	—	9	2	PARTRIDGE	—	—	8	—
DRAPER	—	—	4	—	POWELL	—	—	3	2
FARMER	14	—	—	—	PRITCHARD	—	—	4	—
FOSTER	—	—	7	—	SCHOFIELD	13	—	2	—
GORDON	15	4	—	—	SISSONS	6	—	4	—
HELLAWELL	4	—	8	1	SMITH	14	1	—	—
HINTON	—	—	9	4	STUBBS	12	3	1	—
HOOPER	14	4	—	—	TAYLOR	7	1	3	2
HUME	—	—	8	5	WATTS	15	1	—	—
JACKSON	—	—	4	1	WITHERS	—	—	5	—
JONES	—	—	3	1	WRIGHT	—	—	4	—
KENNEA	—	—	6	—	OWN GOAL	—	1	—	—

FIXTURE LIST, 1959-60

FIRST DIVISION					FOOTBALL COMBINATION				
Date	Name of Club	Gr.	F. A.		Date	Name of Club	Gr.	F. A.	
1959					1959				
Aug. 22	Wolverhampton W.	H	0-1		Aug. 22	Portsmouth	A	3-5	
26	Newcastle United	H	4-3		29	Tottenham Hotspur	A	0-3	
29	Tottenham Hotspur	A	0-0		Sept. 5	Charlton Athletic	A	5-0	
Sept. 2	Newcastle United	A	0-1		12	Bristol City	H	1-1	
5	Manchester United	H	1-1		19	Leicester City	A	1-2	
9	Chelsea	H	1-1		26	Southend United	H	7-0	
12	Preston North End	A	2-3		Oct. 3	West Ham United	A	3-4	
16	Chelsea	A	2-4		10	Arsenal	A	0-1	
19	Leicester City	H	3-4		17	Brighton & Hove Albion	H	0-3	
26	Burnley	A	1-3		24	Swansea Town	A	2-1	
Oct. 3	Leeds United	H	2-0		31	Ipswich Town	H	2-2	
10	Sheffield Wednesday	H	0-0		Nov. 7	Luton Town	A	A	
17	Nottingham Forest	A	2-0		14	Leyton Orient	H	A	
24	Fulham	H	2-4		21	Bournemouth & B.A.	A	A	
31	Arsenal	A	0-3		28	Nottingham Forest	A	A	
Nov. 7	Luton Town	H	A		Dec. 5	Brighton & Hove Albion	A	A	
11	Union St. Gilloise	(1)	A		12	Arsenal	H	A	
14	Everton	H	A		19	Portsmouth	H	A	
21	Blackpool	A	A		26				
Dec. 5	Manchester City	(2)	A		1960				
12	Bolton Wanderers	A	A		Jan. 2	Tottenham Hotspur	A	A	
19	Wolverhampton W.	H	A		9				
26	West Ham United	A	A		16	Charlton Athletic	H	A	
28	West Ham United	A	A		23	Bristol City	A	A	
1960					30	Chelsea	A	A	
Jan. 2	Tottenham Hotspur	H	A		Feb. 6	Leicester City	H	A	
9	(3)	A	A		13	Southend United	H	A	
16	Manchester United	H	A		20	West Ham United	H	A	
23	Preston North End	(4)	A		27	Swansea Town	H	A	
30	Leicester City	A	A		Mar. 5	Ipswich Town	A	A	
6	Burnley	(5)	A		12	Luton Town	A	A	
13	Leeds United	(6)	A		19	Leyton Orient	A	A	
20	Manchester City	(S.F.)	A		26	Bournemouth & B.A.	A	A	
Mar. 5	Nottingham Forest	A	A		April 2	Nottingham Forest	A	A	
12	Fulham	(6)	A		9	Southampton	A	A	
19	Bolton Wanderers	A	A		15	Southampton	H	A	
26	Luton Town	(S.F.)	A		16				
April 2	Everton	A	A		23	Chelsea	H	A	
9	Blackpool	A	A		30				
16	Arsenal	H	A		May 7				
18	West Bromwich Albion	H	A						
19	West Bromwich Albion	A	A						
23	Sheffield Wednesday	H	A						
30	Blackburn Rovers	H	A						
May 7	(Final)								

These fixtures are the copyright of the Football League Ltd., and are printed by their permission under Licence No. 2. They must not be reproduced in whole or in part without permission from the Football League Ltd.



NOW - Every B90 Replacement
is protected by a Certificate of Warranty

Designed to safeguard the motoring public against being persuaded into accepting "Lucas type" exchange units of electrical equipment, the Certificate of Warranty has been introduced to ensure that a genuine Lucas replacement has been supplied.

If service is required during the period of warranty, the certificate can be presented to any garage, motor trader, dealer or stockist anywhere in the British Isles.

They will be fully supported by Lucas Agents and Depots to give speedy service.

The Certificate is valuable - keep it with your driving licence and produce it should the need arise.

LUCAS B90 IMMEDIATE EXCHANGE SERVICE

JOSEPH LUCAS LTD. BIRMINGHAM

PARK DRIVE

CIGARETTES

for pleasure

• They're so well made

QUESTIONS YOU ARE ASKING ABOUT BRAKING—

**"Why not just put
another lining on"**

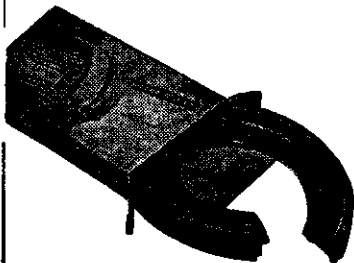
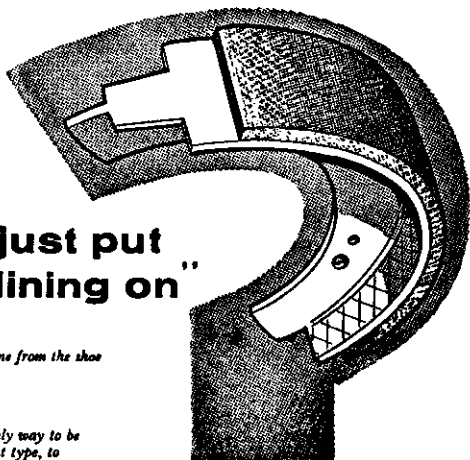
*"You mean tear off the old one from the shoe
and slap on a new one?"*

"That's right."

*"Oh no! That's risky. The only way to be
sure that the lining is the right type, to
the correct contour, is to fit the
complete shoe."*

"O.K., but how can I be sure that the replacement shoe fulfils all those requirements?"

*"Well, these Girling shoes are inspected to
the same standard as those fitted to a new
vehicle, that should be good enough for
anybody!"*



**GIRLING
PARTS SERVICE**

REPLACEMENT UP TO ORIGINAL EQUIPMENT STANDARD

* If you'd like to know more about this
GIRLING PARTS SERVICE send up
to Girling for publication G.143—you
might like to ask them for brake check
log book too!

GIRLING LTD · KINGS ROAD · TYSELEY · BIRMINGHAM 11