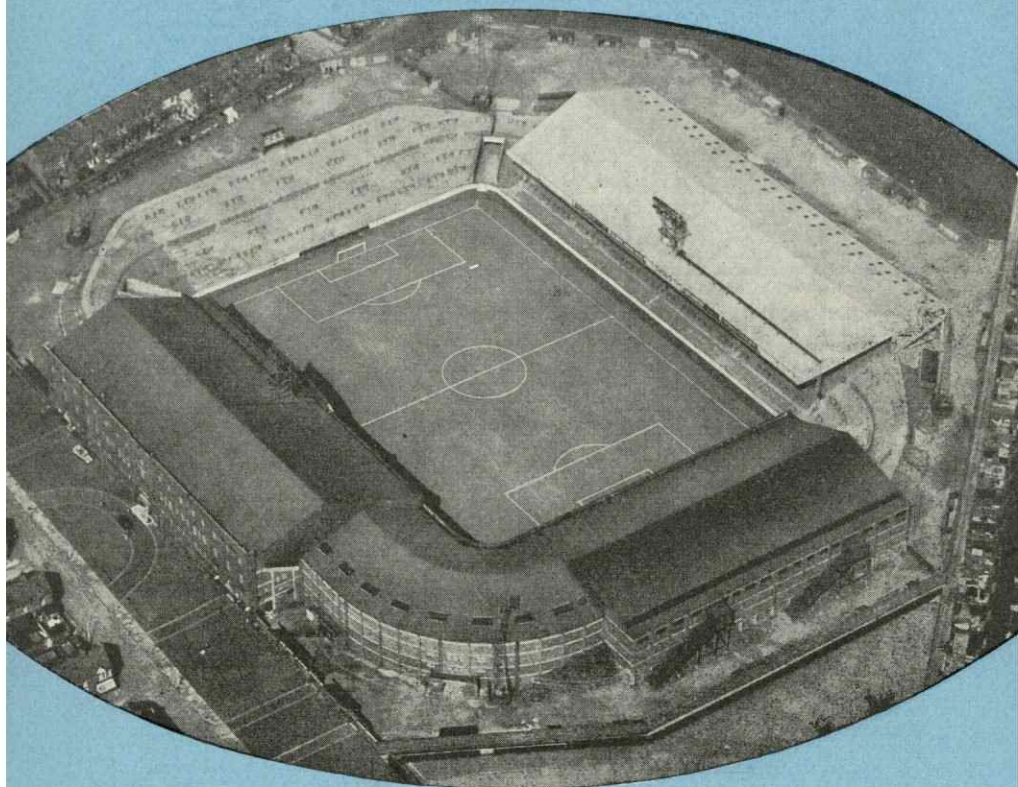


MANCHESTER CITY

FOOTBALL CLUB LTD

SEASON 1959-60



COVERED ACCOMMODATION FOR 50,000

Wednesday, 16th Sept. 1959 Kick-off 7-30 p.m.

LUTON TOWN

Official Programme Fourpence

F.A. CUP WINNERS 1904, 1934, 1956
FINALISTS 1926, 1933, 1955

MANCHESTER CITY HONOURS LIST

LEAGUE CHAMPIONS 1937
RUNNERS-UP 1904, 1921

DIVISION II CHAMPIONS
1899, 1903, 1910, 1928, 1947
RUNNERS-UP 1896, 1951

1959

FIXTURES

1960

The League 1st Division fixtures are the copyright of The Football League Limited, and are printed by their permission under Licence No. 2. They must not be reproduced in whole or in part without permission from The Football League Limited.

LEAGUE 1st Division

1959	Maine Road, Moss Side	Opponents	Res.
Aug. 22	Nottingham F.	H	2-1
26	Fulham	A	2-5
29	Sheffield Wed.	A	0-1
Sept. 2	Fulham (7-30)	H	3-1
5	W'hampton W.	H	4-6
9	Luton Town	A	2-1
12	Arsenal	A	1-3
16	Luton Town (7-30)	H	
19	Manchester U.	H	
26	Blackburn R.	H	
Oct. 3	Blackpool	A	
10	Preston N.E.	A	
17	Leicester City	H	
24	Burnley	A	
31	Tottenham H.	H	
Nov. 7	West Ham U.	A	
14	(1) Chelsea	H	
21	West Brom. A.	A	
28	Newcastle U.	H	
Dec. 5	(2) Birmingham C.	A	
12	Leeds United	H	
19	Nottingham F.	A	
26	Everton	A	
28	Everton	H	
1960			
Jan. 2	Sheffield Wed.	H	
9	3rd Rd. F.A. Cup.		
16	W'hampton W.	A	
23	Arsenal	H	
30	4th Rd. F.A. Cup.		
Feb. 6	Manchester U.	A	
13	Blackburn R.	A	
20	(3) Blackpool	H	
27	Birmingham C.	H	
Mar. 5	Leicester City	A	
12	(6) Burnley	H	
19	Leeds United	A	
26	(SF) West Ham U.	H	
Apr. 2	Chelsea	A	
9	West Brom. A.	H	
15	Bolton Wand.	H	
16	Tottenham H.	A	
18	Bolton Wand.	A	
23	Preston N.E.	H	
30	Newcastle U.	A	
May 7	Final F.A. Cup.		

Friendly—Wednesday 7th October. Grenchen F.C. (Switzerland). K.O. 7.30 p.m.

Central League

1959	Maine Road, Moss Side	Opponents	Res.
Aug. 22	W'hampton W.	A	3-5
24	Chesterfield (7-30)	H	1-2
29	Sheffield Wed.	H	0-0
31	Chesterfield	A	1-2
Sept. 5	Aston Villa	A	2-0
7	Hudders'ld (7-30)	H	2-2
12	Stoke City	H	2-3
16	Huddersfield T.	A	
19	Manchester U.	A	
26	Everton	A	
Oct. 3	Blackpool	H	
10	Derby County	H	
17	Sheffield United	A	
24	Newcastle U.	H	
31	West Brom. A.	A	
Nov. 7	Barnsley	H	
14	Bury	A	
21	Leeds United	H	
28	Burnley	A	
Dec. 5	Preston N.E.	H	
12	Liverpool	A	
19	W'hampton W.	H	
26	Blackburn R.	H	
28	Blackburn R.	A	
1960			
Jan. 2	Sheffield W.	A	
9			
16	Aston Villa	H	
23	Stoke City	A	
30			
Feb. 6	Manchester U.	H	
13	Everton	H	
20	Blackpool	A	
27	Derby County	A	
Mar. 5	Sheffield United	H	
12	Newcastle U.	A	
19	West Brom. A.	H	
26	Barnsley	A	
Apr. 2	Bury	H	
9	Leeds United	A	
15	Bolton Wand.	A	
16	Burnley	H	
18	Bolton Wand.	H	
23	Preston N.E.	A	
30	Liverpool	H	
May 7	Final F.A. Cup.		

Lancashire League "A"

1959	Shawe View Field, Urmston	Opponents	Res.
Aug. 22	Man. U. 'A' (SC)	A	0-1
29	Bolton W. 'A' (SC)	H	1-1
Sept. 5	Bury 'A' (SC)	A	1-2
12	Burnley 'A'	A	0-1
19	Rochdale Res. (SC)	A	
26	Stockport 'A' (SC)	H	
Oct. 3	Liverpool 'A'	H	
10	Everton 'A'	A	
17	Rochdale Res. (SC)	H	
24	Bolton W. 'A' (SC)	A	
31	Man. U. 'A' (SC)	H	
Nov. 7	Blackburn R. 'A'	H	
14	Stockport 'A' (SC)	A	
21	Bury 'A' (SC)	H	
28	Blackpool 'A'	A	
Dec. 5	Burnley 'A'	A	
12	Blackburn R. 'A'	A	
19	Man. U. 'A'	H	
26	Stockport 'A'	H	
1960			
Jan. 2	Bolton W. 'A'	A	
9	Blackpool 'A'	H	
16	Man. Un. 'A'	A	
23	Everton 'A'	H	
30	Bury 'A'	A	
Feb. 6	Bury 'A'	H	
13	Bolton W. 'A'	H	
20			
27	Stockport 'A'	A	
Mar. 5	Liverpool 'A'	A	
12	Preston N.E. 'A'	H	
19			
26	Rochdale Res.	H	
Apr. 2	Preston N.E. 'A'	A	
9			
15	(Fri.)		
16			
18	(Mon.)		
23			
30	Rochdale Res.	A	

(SC)—Denotes Supplementary Competitions.

LEAGUE TABLES

THE LEAGUE—DIV. I
(Including 12th September)

	P	W	D	L	F	A	Pts
Tottenham	7	3	4	0	17	8	10
Wolves	7	4	2	1	19	14	10
Burnley	7	5	0	2	16	14	10
Blackburn	6	4	1	1	14	6	9
Arsenal	7	3	3	1	12	7	9
Fulham	7	4	1	2	14	12	9
West Ham	7	3	2	2	13	12	8
West Brom. A.	7	2	3	2	15	11	7
Manchester United	7	3	1	3	19	15	7
Sheffield Wed.	7	3	1	3	12	10	7
Preston North End	7	2	3	2	13	12	7
Nottingham Forest	7	2	3	2	8	10	7
Leeds United	7	3	1	3	10	15	7
Chelsea	7	2	2	3	15	17	6
Leicester City	7	2	2	3	8	15	6
Blackpool	7	2	2	3	5	10	6
Manchester City	7	3	0	4	14	18	6
Bolton Wanderers	7	2	1	4	9	10	5
Birmingham City	7	1	3	3	8	10	5
Newcastle United	7	2	1	4	12	16	5
Everton	6	0	3	3	7	12	3
Luton Town	7	0	3	4	5	10	3

CENTRAL LEAGUE
(Including 12th September)

	P	W	D	L	F	A	Pts
Manchester United	7	5	1	1	19	7	11
Liverpool	6	3	3	0	15	4	9
Everton	7	3	3	1	13	7	9
Wolverhampton W.	6	4	1	1	20	11	9
Preston N.E.	7	3	3	1	14	12	9
Sheffield United	7	3	3	1	12	9	9
Bury	7	2	4	1	12	8	8
Derby	7	3	2	2	10	7	8
Blackburn	7	3	2	2	15	12	8
Bolton Wanderers	7	3	2	2	7	12	8
Huddersfield	7	1	5	1	7	7	7
Chesterfield	6	3	1	2	10	11	7
Burnley	6	3	0	3	11	10	6
Sheffield Wed.	6	2	2	2	5	10	6
Newcastle United	7	2	2	3	13	13	6
Stoke City	7	2	2	3	9	15	6
Blackpool	7	2	1	4	14	14	5
Aston Villa	6	1	2	3	9	10	4
West Brom. Albion	7	1	2	4	10	14	4
Manchester City	7	1	2	4	11	14	4
Barnsley	7	1	1	5	6	24	3
Leeds United	7	1	0	6	11	22	2

MANCHESTER CITY FOOTBALL CLUB LIMITED

Directors: Messrs. A. DOUGLAS (Chairman) A. V. ALEXANDER D. F. HAMER
F. R. JOHNSON A. P. LONGSHAW W. SMITH
Manager: Mr. LESLIE J. McDOWALL
Telephone: MOS Side 1191/2
Secretary: Mr. WALTER GRIFFITHS
Telegram: Football, Manchester, 14

VOL. I. No. 4 (New Series)

WEDNESDAY, 16th SEPTEMBER 1959

EDITORIAL

A Matter of Values

It is a common failing in us all that we tend to regard the other fellow's possessions as something better than our own. The gleaming article in the shop window always seems to lose a little of its lustre the moment we buy it. So it is in football.

The club supporter will see the faults in his own side far more readily than those in the opposition and for that reason is inclined to underrate the value of his own team and overrate their rivals.

This attitude of supporters is, in many respects, a good thing in that it reflects that keen interest which is vital to the well-being of any club. Yet it can often lead to a distorted sense of values and frequently unfair criticism.

Not without some justification there has been considerable criticism of the City team this year and if the out-and-out pessimists are to be believed relegation is a

foregone conclusion: only 35 matches away.

These notes have never claimed that from a performance point of view all is rosy in the Maine Road garden this season yet in confirmation of our points made above we reproduce this viewpoint which appeared in a national paper match report following our away victory against Luton last week: "City look as if they can settle down into a useful combination".

It is in no sense of smugness that the above has been reproduced but merely to illustrate that the neutral Southern observer who is not so close to the club as the supporter and who, therefore, has no preconceived ideas of what the team might be or should be, sees more merit in it than the pessimist who is always fearing the worst.

Bert Trautmann has been a similar victim of this supporter concern during the last week or so. Because Bert is such a great Maine Road favourite and over the years has set such a consistently high standard of goalkeeping, any slip from those standards starts the rumours going. Bert would be the first to admit that in our last two home games against Fulham and Wolves he was something less than his brilliant self. In consequence there was some alarm and despondency among supporters that Bert had begun to slip. Yet four days after the Wolves game Bert was bringing the house down at Luton where his performance was the deciding factor in our victory.

* * * *

Alan Oakes, young wing half who joined the ground staff last year, has now signed professional for the club. Alan, who was born at Winsford, played for Mid-Cheshire Boys, captained the Cheshire Boys team and had trials for the England Schoolboys side.

The club has arranged a friendly match with Swiss cupholders Grenchen under floodlights at Maine Road on Wednesday, 7th October (kick-off 7.30 p.m.). Ali prices will be as usual for first team matches.

Complete **NEW** Service

EACH NIGHT

the

Evening Chronicle

gives you the

FOLLOWING DAY'S RACING

Official

**RUNNERS - RIDERS
BETTING - SELECTIONS**

KEEP THIS
COUPON
and watch for
ticket match
announcements

Steel
Storage
Tubes and Fittings.
solice"
r greater
nomy

STONE-DRI

REGD.

WEATHERWEAR

A good defence . . .



. . . can prove invaluable both to football teams and their supporters. A Stone-Dri raincoat provides an impregnable defence against a continuous attack by the very worst weather.

A Stone-Dri is warm to wear, modestly priced and available in many styles.

Throughout all seasons keep warm and dry in a Stone-Dri.

Obtainable only at:—

DIRECT RAINCOAT CO. LTD.
Market Street, Manchester

Branches in all main towns

Nottingham Forest
 Leeds United
 Chelsea
 Leicester City
 Blackpool
 Manchester City
 Bolton Wanderers
 Birmingham City
 Newcastle United
 Everton
 Luton Town

OUR VISITORS

This evening we extend a very cordial welcome to our visitors, Luton Town F.C., last season's F.A. Cup Finalists.

Here are pen pictures of their players.

R. BAYNHAM (Goalkeeper)—Has been with the Club since 1951. Secured from Southern League Club Worcester City. Has represented England on several occasions including their matches versus Denmark in Copenhagen, Ireland and Spain. Played for the Football League versus the League of Ireland on two occasions and also for the England "B" team versus the Yugoslavia "B". Was a member of the F.A. Touring team to South America last close season.

S. DUNNE (Right Back)—Born in Limerick, Eire. Came to Luton from Shelbourne F.C. in May, 1950. Has played for his country on numerous occasions and recently took part in their international versus Poland.

J. McNALLY (Full Back)—Can occupy either full back position. Like Dunne he played for the League of Ireland Club, Shelbourne and has been with Luton since May, 1956. He played for Eire "B" versus Rumania in Dublin in 1957 and also for Eire versus Czechoslovakia in April, 1959. He travelled with the Eire team to Czechoslovakia in the last close season. Has a great future with the Eire team.

K. HAWKES (Full Back)—A product of North Eastern football, he joined the Town in 1951 from Shotton Colliery Welfare and was signed after a Trial in one of our Teams. Made his debut in League football on 14th December, 1957 against West Bromwich Albion and has been a regular first team player since that date. Has a younger brother also a professional with Luton.

R. MORTON (Right Half)—Local born. Has been with the Club since 1948. Played for England "B" versus Switzerland "B" team, the Football Combination versus the Dutch XI (on two occasions) and also for the Football Association versus the Army. Was chosen as Reserve for England versus Ireland at Wembley in 1955 and again when they played Ireland in 1958. A brilliant wing half who has made numerous appearances at centre forward, in fact played in this position in our F.A. Cup Final.

D. PACEY (Half Back)—First signed for the Club in August 1956 whilst doing his National Service. Since his demob he has made exceptional progress and received his first honour when selected to play for the F.A. versus the R.A.F. in October, 1958. Has been a regular member of the first team. Was a member of the England "under 23" team which travelled to Italy in the last close season.

J. GROVES (Half Back)—Son of Arthur Groves the old Derby County inside forward. Won Derbyshire Schoolboy honours and signed by Luton when only 15. Plays either inside forward or wing forward.

W. BINGHAM (Outside Right)—Luton paid their highest ever fee for this player from Sunderland during the close season of 1958. Is a shining light of his country's forward line and has played in every international match for Ireland since he was first chosen in 1952.

G. TURNER (Inside Right)—Came to Luton as a wing half upon his demobilisation from the Navy in 1950 but found his true position at inside right. In season 1953/4 he broke the Club's individual goal scoring record since their promotion to the Second Division with 37 goals. Represented the English League versus the Scottish League in October 1955 and also played for the F.A. XI versus the Army in 1958.

A. BROWN (Centre Forward or Inside Left)—A Scottish International secured from Blackpool for a five figure fee in February, 1957. Has been extremely unlucky with injuries, missing two Cup Finals whilst playing with Blackpool and a further Cup against England in April, 1958. Was, however, fortunate enough to be in the Cup Final Team for Luton last season.

G. CUMMINS (Inside Left)—An Irishman from Dublin. Cummins first crossed to sign for Everton in 1950 and it was from the Merseyside Club that Luton secured him for a big fee in 1953. A brilliant ball player. He has already played for Eire on many occasions, including their matches with Luxemburg, Norway, Yugoslavia, Spain, Denmark, Poland and Czechoslovakia.

A. GREGORY (Forward)—A local product who played for Bedfordshire's Youth team, earned youth caps for England and was also a member of Bedfordshire's team in Southern Counties Amateur Championships. Has made many appearances in our First Team and was also the outside left in the Cup Final Team. Now doing his National Service. Has also played centre forward on quite a number of occasions.

Building
Materials

Specialities
Plastering
Materials,
Asbestos,
Cement
Sheets,
Salt
Glazed Drain Pipes, Concrete Blocks.

Orders and enquiries large or small
receive the same keen attention.

Directors: J. Burns, T. McNicholls,
S. Avery.

BURNS BUILDING SUPPLIES LTD

CONSOLITE HOUSE · GREAT ANCOATS ST · MANCHESTER · 4

WHOLESALE BUILDING MATERIAL MERCHANTS

B
B
S

ARDWICK
5225/6

Plumbing
Materials

Specialities
Copper
Cylinders
and
Boilers,
Steel
Storage

Cisterns, Copper Tubes and Fittings.

Build with "Consolite"
concrete blocks for greater
warmth and economy



Back Row (left to right) Ken. Hawkes, John Groves, Ron. Baynham, Dave Pacey, Brendan McNally.
Front Row (left to right) Billy Bingham, Allan Brown, Bob Morton, Sid. Owen (now Club Manager), George Cummins, Tony Gregory.

CITY TEAMS AND RESULTS

LEAGUE—DIVISION I

Saturday, 5th September. City 4, Wolverhampton W. 6. (H.T. 3-4).

CITY: Trautmann; Branagan, Kerr; Cheetham, McTavish, Barnes; Barlow, Hannah, McAdams, Hayes, Colbridge.

WOLVERHAMPTON W.: Finlayson; Stuart, Harris; Clamp, Showell, Flowers; Lill, Mason, Murray, Slater, Deeley.

Goalscorers: City: McAdams (3), Barlow. Wolves: Deeley, Murray (2), Slater (2), Lill.
Attendance: 43,650.

Wednesday, 9th September. Luton Town 1, City 2. (H.T. 1-2).

LUTON TOWN: Baynham; Dunne, Hawkes; Morton, Kelly, Groves; Bingham, Brown, Turner, Cummins, Kilgannon.

CITY: Trautmann; Leivers, Branagan; Cheetham, McTavish, Kerr; Barlow, Hannah, McAdams, Hayes, Colbridge.

Goalscorers: Luton Town: Brown. City: Hayes, Hannah.
Attendance: 13,122.

CENTRAL LEAGUE

Saturday, 5th September. Aston Villa 0, City 2. (H.T. 0-1).

ASTON VILLA: Beaton; Aldis, Lee; Birch, Morrall, Deakin; Smith, Tindall, Hazelden, Burrows, Adam. CITY: Dowd; MacDonald, Sear; Phoenix, Ewing, Oakes; Pennington, Lister, Dyson, Fagan, Fidler.

Goalscorers: City: Lister, Fagan.
Attendance: 3,440.

Monday, 7th September. City 2, Huddersfield Town 2. (H.T. 1-0).

CITY: Dowd; Wann, Sear; Phoenix, Ewing, Shawcross; Haydock, Johnstone, Lister, Fagan, Fidler.

HUDDERSFIELD TOWN: Fearnley; Caldwell, Parker; Atkins, Holt, Connor; McCall, Taylor, Conmy, Balderstone, O'Grady.

Goalscorers: City: Fagan, Fidler. Huddersfield Town: Taylor, McCall.
Attendance: 3,227.

LANCASHIRE LEAGUE

Saturday, 5th September.

Division I. Bury "A" 2, City "A" 1.

CITY "A": Smith; Taylor, Leigh; Wann, Greenall, Hart; Matthews, Gosling, Cuthbert, Murray, Meachin (J.B.).

Goalscorer: City "A": Cuthbert.

Division II. City "B" 2, Everton "B" 3.

CITY "B": Guinn; Jarvis, Thurnham; Hill, Stevenson, Gomersall; Lloyd, Pearson, Turner, Aimson, Wagstaffe.

Goalscorer: City "B": Pearson (2).

Junior Division. City Juniors 1, Bury Juniors 2.

CITY JUNIORS: Greenhalgh; Jackson, Lennon; Eyre, Harold, Hart (R.); Crellin, Benson, Woods, Fletcher, Meachin (D.).

Goalscorer: City: Crellin.

CITY v. UNITED—19th SEPTEMBER

Will patrons kindly note that tickets for the whole of the seating accommodation including Blocks "A" and "H" have been sold for the above match.

It is NOT an "all ticket match" and the turnstiles to the standing portions of the Ground will be opened at 12.45 p.m.

Patrons are advised to come as early as possible, and they are requested to take up their positions towards the front of the Ground thereby assisting the Club and the Police to accommodate in comfort what is expected to be the largest crowd of the season.



Tel.: BRO 2201

MAIN DEALERS

CARS . VANS . TRUCKS

A.I. USED CARS

with a 3 months' warranty

282 BURY NEW ROAD . MANCHESTER 7

Pass Your Sport Problems to ROY CLARKE

(Manchester City F.C. & Wales)

I CAN SUPPLY ALL YOUR SPORTS REQUISITES, TOYS, GAMES, ETC.

in fact everything for the sportsman

ROY CLARKE & CLAPHAM LTD.

174 WILMSLOW ROAD
RUSHOLME, MANCHESTER 14

Telephone: RUSholme 1672

525 WILBRAHAM ROAD
CHORLTON-cum-HARDY
MANCHESTER 21

Telephone: CHORlton 2624

Call and have a friendly chat only 5 minutes from Maine Road ground.
Also at 306 Stretford Road, Manchester

MOTORISTS

A letter, 'phone call or visit can save you as much as £7, compared to your present insurance rate for your motor vehicle.

Starting bonus, after one year, is 33 1/3% rising thereafter to 50%. Also 33 1/3% bonus for commercial vehicles.

All the leading offices represented.

First-class claims service, no annoying delays.

SERVICE WITH SECURITY FROM

R. E. MERRIN & CO.,
(Insurance Brokers)

1180 CHESTER ROAD, STRETFORD,
MANCHESTER

Tel.: LON 4612 MOS 4916 (p.m.)
HEA 6876 (p.m.)

HALF-TIME SCOREBOARD

A CHELSEA BIRMINGHAM C.	K ROTHERHAM U. PLYMOUTH A.
B EVERTON BLACKBURN R.	L STOKE C. LINCOLN C.
C LEEDS U. MANCHESTER U.	M SUNDERLAND SHEFFIELD U.
D NEWCASTLE U. WEST BROM. A.	N BARNLEY NORWICH
E SHEFFIELD W. NOTTINGHAM F.	O SOUTHAMPTON PORT VALE
F WOLVES. FULHAM	P WREXHAM CHESTERFIELD
G BRIGHTON & H. LEYTON O.	Q CRYSTAL P. STOCKPORT C.
H CARDIFF C. DERBY C.	R DARLINGTON ROCHDALE
J IPSWICH T. BRISTOL R.	S H'FIELD T. RES. GITY RES.

MUSICAL PROGRAMME

BESWICK PRIZE BAND

Conductor
MR. ALBERT RISBY

MARCH *Imperial Echoes*
*
SELECTION
Maid of the Mountains
*
WALTZ *Grenadiers*
*
TWO-STEP *Barcelona*
*
FOX-TROT *Stage Coach*
*
MARCH
The Victor's Return


FOOTBALL LEAGUE

FIRST DIVISION

Sky blue shirts

MANCHESTER CITY

White knickers

TRAUTMANN				
2	LEIVERS	3	KERR	
4	CHEETHAM	5	McTAVISH	6
7	BARLOW	8	HANNAH	10
		9	McADAMS	11
			<i>HAYES FAGAN!</i>	COLBRIDGE
Referee: R. T. E. Langdale (Darlington) Kick-off 7.30 p.m.				
				
Linesmen: G. M. Hartley (Red Flag) F. S. Jackson (Yellow Flag)				
11	HAWKES, B.	10	CUMMINS	9
		6	GROVES	5
		3	HAWKES, K.	2
				DUNNE
				BAYNHAM

White shirts

LUTON TOWN

Black knickers

The teams are subject to alteration

NEXT MATCH AT MAINE ROAD

FIRST DIVISION

MANCHESTER UNITED

SATURDAY NEXT, 19th SEPTEMBER, KICK-OFF 3 p.m.

LES McDOWALL
writes EVERY SATURDAY
in the

Evening Chronicle
FOOTBALL PINK
FINAL

The paper that has everything
for CITY SUPPORTERS

for a really good meal
visit a

UCP RESTAURANT

MERCHANTS
92 Market St.

HILL'S
Market St. (opp. Lewis's)

MANOR
Brown St. (Market St.)

TUDOR
Oxford St. (near Odeon)

FINGLAND'S

Self Drive
Hire Cars
Latest Models

GARAGE & COACH STATION
261, WILMSLOW ROAD
RUSHOLME, MANCHESTER I4

Luxury Coaches
available for
Private Parties

RUSHolme 2894

POYSER TRAUTMANN KERR EVERY WEEK

F GREEN FOOTBALL

THE BIG DOUBLE
THAT GIVES YOU
THE BEST VALUE

E NEWS EVENING

EVERY WEEK POYSER TRAUTMANN KERR

THE NORTH'S OWN SUNDAY PAPER

Keep up-to-the-minute with the
Fullest Reports — Latest Results
Best Commentaries and Gossip

by

**DAVID JACK
CAPEL KIRBY**

and an all-star sports team

EMPIRE NEWS

GREAT £1,000 FOOTBALL CONTEST EVERY WEEK

HILTON READY-MIXED CONCRETE

*for
Quality
Service
Reliability*

**HILTON GRAVEL LIMITED
LIVERPOOL ROAD
MANCHESTER 3
DEAnsgate 5455**

Trumix Concrete

.....

*For the
BUILDER who
knows his
concrete*



**PLANT AND LABORATORY
STOCKPORT 3615
READY-MIXED CONCRETE AT ITS BEST**



Scrap Old Systems

by **DICK WALTON**

of The Daily Sketch

England's first International match of the season—against Wales at Cardiff—is four weeks away.

We all have our own ideas regarding the make-up of the England team, but until we can bring the players together for an extended period it is not possible to get the complete picture of this eleven-piece jig-saw.

The old order of selected players reporting for a three-day get-together before a big match should be scrapped.

Thirty men in form, yes, at least thirty, should be instructed to report two days a week to train and play together throughout the International season.

I'm sure all First and Second Division clubs would be willing to release players for this purpose. Looking back over the past England teams there are not many clubs who have had to provide more than two players for any one match.

With thirty players at his disposal manager Walter Winterbottom could stage full-scale practice matches and also be in the happy position of having eight spare men to experiment with, or to replace injured players.

After that summer tour flop too much time cannot be spent on rebuilding an England team that will put us back were we belong . . . as masters and not pupils of our great game.

Some club managers may turn round and tell me I am talking through my hat (I rarely wear one) in suggesting they

release players for two days every week. "What about our own team practices", they may cry.

My answer to that is that if a player is good enough to be considered for his country (and remember I stated men in form) his capabilities should be known "at home". In addition his absence should provide his manager with the chance to "blood" a reserve player more thoroughly in team try outs.

If we are to build a team of world beaters the Continental idea of players being together most of the time should be adopted.

Sacrifices by the players themselves, as well as their clubs, should be made. After all they are being paid to play for England. I'd give up quite a lot of what spare time I have to earn £50 for 90 minutes work.

I'll go so far as to say that as long as my expenses were paid I'd do it all for the honour. Those days, of course, have gone in every line of business. Money has the controlling hand, but that's not lacking in the Football Association's till.

I also support earlier suggestions by several of my Press colleagues to call on two or three of our top team managers to assist in the selection of our International team.

After all they probably see more players in action in first-grade football than anyone else.

NOTE.—These are the views of the writer and not necessarily those of the Manchester City Club.

**Anytime's Cocktail time!
Make it the ever popular—
SMITHS**

"Eleven o'Clock"

**WINE
APERITIF**

*For a good "Kick-off" to your Party
Obtainable from your local Wine Merchant*

Proprietors:

**James Smith & Co. (Wine & Spirit)
Merchants Ltd.**

26 CROSS STREET, MANCHESTER 2

Established 1863

APPEARANCES AND GOALSCORERS 1959-60

(Up to and including the 12th September)

1st DIVISION

APPEARANCES: Barlow, Colbridge, Hayes, Kerr, McTavish, Trautmann 7; Barnes, Branagan, McAdams 5; Cheetham, Hannah, Leivers 4; Johnstone, Shawcross 3; Fagan 2.

GOALSCORERS: McAdams 6; Colbridge, Barlow 2; Hayes, Johnstone, Fagan, Hannah 1.

CENTRAL LEAGUE

APPEARANCES: Ewing 7; Pennington 6; Dowd, Fidler, Haydock, Oakes, Phoenix 5; Dyson, Lister, McDonald, Wann 4; Fagan, Hannah, Sear 3; Branagan, Cheetham, Fleet, Johnstone, Murray, Shawcross 2; McAdams, Taylor 1.

GOALSCORERS: Pennington 3; Fagan, Fidler, Hannah 2; Dyson, Lister 1.

LANCASHIRE LEAGUE—DIVISION I

APPEARANCES: Greenall, Hart, Leigh, Matthews, Meachin (J.B.) 4; Cuthbert, Gosling 3; Murray, Shirley, Smith, Taylor, Wann 2; Cummins, Dowd, Fleet, Hill, Howard, Lister, MacDonald, Oakes 1.

GOALSCORERS: Cuthbert, Gosling 1.

LANCASHIRE LEAGUE—DIVISION II

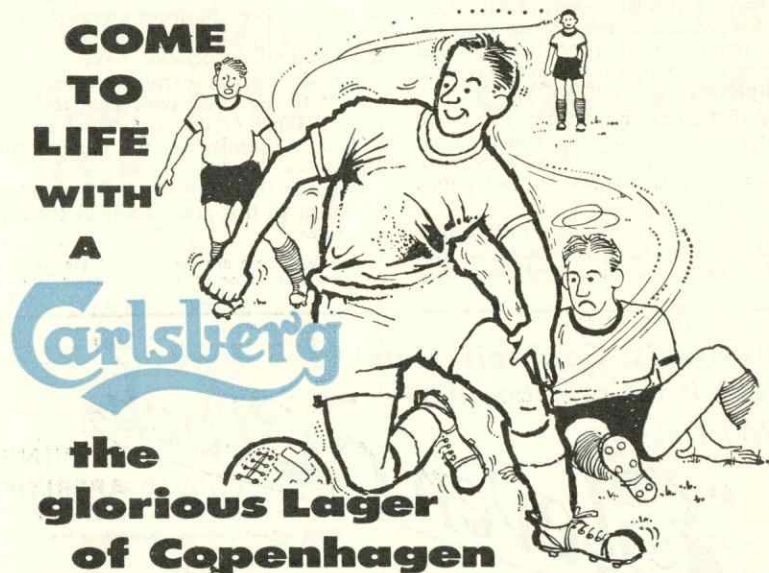
APPEARANCES: Pearson, Stevenson, Thurnham, Turner, Wagstaffe 4; Aimson, Gomersall, Hill, Jarvis 3; Guinn, Lloyd 2; Crellin, Fletcher, Jackson, Lennon, Richardson, Smith, Swann, Swarbrick 1.

GOALSCORERS: Aimson, Pearson 2; Richardson, Turner 1.

LANCASHIRE LEAGUE—JUNIOR DIVISION

APPEARANCES: Benson, Crellin, Jackson, Lennon, Meachin (D.T.) 2; Guinn, Peacock, Shaw, Swann, Taylor, Young, Greenhalgh, Eyre, Harold, Hart (R.), Woods, Fletcher 1.

GOALSCORERS: Crellin 4; Taylor, Young 1.



Sole Agents:

CARLSBERG SALES LTD., Brooks's Bar, Manchester, 16

MEET THE JUNIORS

ROBERT STEVENSON

(Centre Half)

Signed as an amateur for City in December 1957, when he came to work on the Ground-staff. Previously played for Denton Boys. Plays regularly for City's "B" team. His hobbies include swimming and table tennis.

Height: 5 ft. 10 in.

Weight: 11 st. 6 lb.

Photograph by courtesy of
The Evening Chronicle



GUS DEMMY

COMMISSION AGENT

Head Office:

58 SWAN STREET
MANCHESTER 4

Telephone:

DEAnsgate 2041 (all lines) and
DEAnsgate 8711 (all lines)

MEMBER OF

VICTORIA CLUB, LONDON
NATIONAL SPORTING LEAGUE
NORTHERN B.P.A.
MANCHESTER B.P.A.
NATIONAL TURF PROTECTION
SOCIETY
TURF GUARDIAN SOCIETY

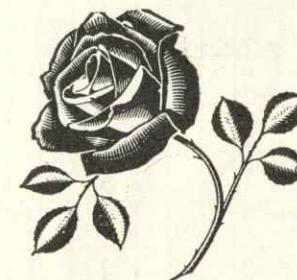
Attends all

Principal Race Meetings
(TATTERSALLS ENCLOSURE)

also

Albion Greyhounds, Salford
(MAIN ENCLOSURE)

The Gus Demmy Organisation offers
facilities second to none in respect of
SERVICE . INTEGRITY
SECURITY and CONFIDENCE
NO LIMITS FREE POSTAGE
Ante-Post books always open on all
future events



RED ROSE ALES & STOUT

Specially Brewed for Your
Enjoyment

from all "Red Rose" Houses
and Off-Licences.

Groves & Whitnall Ltd.
Regent Brewery, Salford 5

Results of First Division Games

(INCLUDING SEPTEMBER 12th)

CLUB	Arsenal	Birmingham City	Blackburn Rovers	Blackpool	Bolton Wanderers	Burnley	Chelsea	Everton	Fulham	Leeds United	Leicester City	Luton Town	CITY	Manchester United	Newcastle United	Nottingham Forest	Preston North End	Sheffield Wednesday	Tottenham Hotspur	West Brom. Albion	West Ham United	Wolverhampton W.
Arsenal	H A	★			1-0								3-1			1-1 3-0		0-1	1-1			3-3
Birmingham City	H A	★					1-1							1-1	4-3 0-1		2-3		0-0			0-1
Blackburn Rovers	H A		★		1-0 3-0				4-0							2-2		3-1				1-3
Blackpool	H A			★	3-2				0-1	1-1	0-0 1-0					0-1		0-5				
Bolton Wanderers	H A	0-1	0-3 0-1	2-3	★			2-1				0-0								5-1		
Burnley	H A					★	1-4 5-2 2-1		3-2								2-1		2-1	1-3		
Chelsea	H A		1-1			4-1	★			1-2	1-3			3-6 1-0		4-4						
Everton	H A				1-2 2-5		★	0-0				2-2				1-1						
Fulham	H A			0-4	1-0			0-0	★			4-2 5-2 1-3										3-1
Leeds United	H A				2-3	2-1				★	1-1 2-3	1-0		0-6						2-1		
Leicester City	H A			1-1		3-1				3-2 1-1	★				0-2					0-5	0-3	
Luton Town	H A			0-1 0-0	0-0			2-2	2-4	0-1		★	1-2									
CITY	H A	1-3							3-1 2-5			2-1	★			2-1		0-1				4-6
Manchester United	H A		1-1				0-1 6-3			6-0				★	3-2				1-5	2-3		
Newcastle United	H A		1-0 3-4								2-0				2-3	★	1-2		1-5	2-2		
Nottingham Forest	H A	0-3 1-1	2-2	1-0				1-1					1-2			★		2-1				
Preston North End	H A		3-2			1-2	4-4								2-1		★		1-1	1-1 1-2		
Sheffield Wednesday	H A	1-0		1-3	5-0								1-0			1-2		★				2-2 1-3
Tottenham Hotspur	H A		0-0											5-1 5-1					★	2-2 2-1	2-2	
West Brom. Albion	H A					1-2				5-0				3-2	2-2		1-1		1-2 2-2	★		
West Ham. United	H A				1-5	3-1				1-2	3-0						2-1 1-1		2-2		★	
Wolverhampton W.	H A	3-3 1-0	3-1							1-3			6-4					3-1 2-2				★

Banner

Regd.

SHIRTS

for **CITY** men & boys



From good class stores and outfitters everywhere
HENRY BANNERMAN & SONS LTD · HALE · ALTRINCHAM · CHESHIRE

2401 ©

LONDON MIDLAND

BLACKPOOL ILLUMINATIONS

SUNDAY, 20th SEPTEMBER

MANCHESTER Victoria	depart	11.28 a.m.	7/-
BLACKPOOL Central	return	9.30 p.m.	

MANCHESTER Victoria	depart	4.25 p.m.	5/3
BLACKPOOL Central	return	10.15 p.m.	



MONDAY, 21st SEPTEMBER

MANCHESTER Victoria	depart	11.30 a.m.	7/-
BLACKPOOL Central	return	9.45 p.m.	

LONDON MIDLAND