

FOOTBALL LEAGUE — DIVISION 1

LUTON TOWN

v.

Bolton Wanderers



Official Programme

PRICE 3d.

Sat., 5th September, 1959

Kick - off 3 p.m.

VHF *for everyone!*

Here at last is a low - priced,
highly sensitive VHF radio —
good to look at, good to listen to,
and easy on the pocket.

AND IT'S A *murphy*

Williams & Richardson

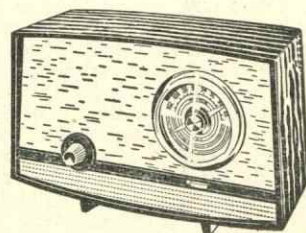
174, BISCOT ROAD · LUTON

Telephone: LUTON 6897/8



in Black or Red Plastic

£14 · 3 · 6



in Pacific walnut veneer

£16 · 5 · 6

LILLYWHITE'S TEAM for 1959-60

at your service again

WE SHALL BE PLAYING ALL OUR REGULAR LEAGUE TEAM PLAYERS

Goalkeepers: S. ERVIS, PRICELOW

Backs: DOUG. FURR, H. E. M. LOCK

Half Backs: S. HEADS, T. R. ELLIS, B. ATTENS

Forwards: P. LYE, L. ADDERS, P. OLES, D. ORES, F. LORING

Reserve: T. IMBERS

WE WISH ALL OUR SUPPORTERS WELL

we are at your service

★ YOU ARE INVITED TO 'PHONE OR CALL AT ★

39, CASTLE STREET, LUTON 'Phone Luton 6282

STANTON ROAD, LUTON 'Phone Luton 51421

HOUGHTON REGIS DEPOT 'Phone Dunstable 546

LEAGRAVE ROAD DEPOT 'Phone Luton 52140

If you are interested in any of our players

Luton Bobbers Stand Club

BEECH HILL PATH, LUTON

Telephone: LUTON 2566

The winning number of the Penny-on-the-Ball Ticket will be announced over the loud speakers at the interval. The person holding the winning ticket can go to the rear of the Main Stand after the game and for 3d. purchase the ball from Mr. K. Bygraves.

The ticket number for the ball on Saturday, 29th August (Leeds United match) was 36087

These days we all have to be prepared for any surprise that may come along, sometimes we are pleased, but also one's hopes can be built up for great expectations and should they not materialise the more dissatisfied one becomes. In our first home game with Blackpool everyone who saw it will agree that we should have won by a good margin, but it is after 90 minutes when the referee sounds his whistle that the result counts. Again on Saturday, against Leeds United, the small crowd of just over 15,000 was very discouraging, but the worst was to come, another home game lost. On Monday we went to Blackpool and brought back a very valuable point from the "Seasiders." This should give a little more encouragement to the supporters that have, so early in the season, been discouraged. Today we have Bolton Wanderers as our guests. This should provide us with a good

game and if we can take two points from them it will be the means of helping to draw a large crowd to see Manchester City on Wednesday. So let us hope the "Boys" obtain four home points, which will make, not only the supporters, but the Directors, Manager and all concerned more satisfied. To maintain this satisfaction it is for the supporters to roll up in large numbers and set up a record crowd.

★ Join The Bobbers Stand Club

Only 1/2 yearly or 21/- to become a Life Member.

Send your cheques or postal orders with a stamped addressed envelope to:

Mr. J. Collier, Hon. Treasurer,
c/o Bobbers Stand Club,
Beech Hill Path,
Luton, Beds.

CLUB NOTES

IT is a long, long time since we experienced such a poor start to a season as this one 1959/60. And the pity of it is that it could have been one of the best, for if the two home matches had resulted in maximum points for us, which without any argument should have been the case, we would have been nicely at the top of the Table instead of at the other end as at present. Very rarely in the past have we been beaten at home before the turn of the year, and yet already we have lost twice out of the two matches played here. Anyone who had prophesied this before the start of the season would have been looked upon with pity if they had seen the lads in their training. Everyone was keyed up to get off to a good start under our new Manager, Syd Owen, who has himself taken a strenuous and guiding part in all these pre-season activities, but however keen and enthusiastic all this has been, allowance cannot be made that the ball may run badly for us, which is just what has happened. The two matches we have played away we would not have grumbled if we had come away pointless, for although our lads played well on both occasions the home team could with that bit of luck have taken both points in each case. Yet here at home when we should have won both matches we have lost them both, and so the grumbling and recrimination have set in already. The best team in the world will have its downs as well as its ups, and when a team is down that is the very time its supporters should give it all the encouragement they can. Everybody wants to support a winning team. It is when a team has struck a bad patch that the true supporter is found, and we thank all of you here today, although very disappointed you must be, to come along and give our lads your continued support. It is the "stalwarts" who have stayed away today who will be the very first to claim regular support when the Cup Ties come along. We shall emerge from this patch, you can take our Manager's word for that, and then the sun will shine again and pleasant week-ends will be enjoyed by all.

It was a well-earned point we brought back from Blackpool last Monday evening after a match that was full of thrills and entertaining football from start to finish. Anyone seeing the match here last Saturday and the match at Blackpool two days later would find it hard to believe that practically the same team could play so vastly different in such a short time. Ron Baynham was the hero of the hour, for he never put a foot wrong through the ninety minutes and his anticipation at times was uncanny. He had ten times the work to do he has been called upon to do in both matches combined at Kenilworth Road this season, yet we earned a point. The defence as a whole played well, especially the half back line, and the inclusion of Dave Pacey at centre forward made all the difference to the effectiveness of the forward line. He gave the impression he had been playing in that position all his playing career. It was a bitter blow when only about ten minutes from the end he was brought down when moving into a good scoring position, which had he been allowed to go on would probably have won the match for us. He is suffering from badly pulled ligaments, and will be out of the side for at least three weeks. This means that instead of a fairly settled team as had been hoped during the match at Blackpool in view of its success, the idea had to be shelved almost as soon as it had been born. Gordon Turner has come through his testing time with the Metropolitan League side very satisfactorily—the Reserves had no match during that time—and

so he comes in today with, we all hope, no less than himself, a welcome return to his former shooting power.

Bolton Wanderers are our guests today, and once again we have the pleasure of receiving them at Kenilworth Road. They are not just now the rampant Bolton of old, for of the four matches they have played to date only one, at home, has been won. They are however having to take the field without their star player, Nat Lofthouse, a big handicap which is proving too much at the moment. Nat is recovering from an injury and is expected to be able to take his place in two or three week's time, but meanwhile his generalship and experience is missing, hence their place in the lower part of the Table. Today's match gives us the opportunity of seeing the two best goalkeepers in England in action. We here at Kenilworth Road think we know who is the best, but perhaps after this match all doubts will be put at rest. Certainly after the wonderful show Ron Baynham put up at Blackpool last Monday, coming on top of his consistently good play, Ted Hopkinson will have to be at his very best today if the verdict is going to be in his favour.

We have been asked to draw your attention, especially those of you who live in the St. Albans' district, of a Charity Football Match being organised by the Royal Air Forces Association (St. Albans Branch) on Sunday, 13th September at Clarence Park Football Ground, kick-off 3 p.m. between The Showbiz XI and Pat Welton's All Star XI. All proceeds are to be given to R.A.F. Charities and the Show Biz Charity Fund, so that those of you who attend will have the satisfaction of not only seeing most of your favourite footballers and Stars in action, but that your money is going to two very worthy causes. The All Star XI will contain such names as George Swindin, Pat Malloy, Ron Greenwood, Ron Burgess, Alex Stock, Len Goulden, Jackie Goodwin, and our own Syd Owen. Among the Show Biz will be Dave King, Ronnie Carroll, Siggie Jackson, Glen Mason, Wally Barnes, Jimmy Henney, Pip Wedge, Chas. McDevitt, and quite a few others will be there who, if not playing, will be "on show." Admission is 1/6.

British Railways have made arrangements for travelling to Sheffield on Saturday, September 26th when we play The Wednesday. The times are—depart Luton 10.12 a.m., Bedford 10.37 a.m., change at Leicester and arrive Sheffield 1.23 p.m. Depart Sheffield 6.43 p.m., change at Derby and arrive Bedford 9.47 p.m., Luton 10.18 p.m. The return fares are at the reduced rate of 19/6 from Luton and 16/9 from Bedford. All of you who are interested are asked to obtain your tickets before the day if possible to give the Railway Staff some idea of the demand.

Future matches at Kenilworth Road have been arranged as follows:—

Wed. Sept. 30th v. OSTRAVA. A 1st Division Czechoslovakian team. Ostrava is the second largest city in Czechoslovakia. We are told they are a very good side.

Wed., Oct. 7th v. AUSTRIA (Vienna). A first class side with many international players.

Wed., Oct. 14th v. ABERDEEN. The Scottish F.A. Cup losing Finalists. We play a return match with them at Aberdeen the following Wednesday.

And on Wednesday, November 4th, we play at Cambridge against Cambridge City in a match being arranged by Cambridge University, the whole of the proceeds of the match to go to the Earl Haig Fund.

Charles Mares' clothes are a joy to buy —
a comfort to wear —
a lasting pleasure —

**Charles
Mares**
LIMITED

George Street, Luton — and at St. Albans — Bedford — Bletchley — St. Neots

**JACK
TAYLOR**
(ex - Luton Town F.C.)
GENERAL GROCER
TOBACCO and
CONFECTIONERY
223
Beechwood Rd.
Luton

ORDERS and
DELIVERIES
GIVEN
PERSONAL
ATTENTION

Telephone 51650

Heads we Win

'IRONS'

Gentlemen's
HAIRDRESSERS
and Stylists
6, MILL STREET
LUTON

6 CHAIRS
Fully Staffed by Experts

TELEPHONE: LUTON 1961
Appointments arranged

Hours: 8.15 a.m. to 6.30 p.m.
Weds.: 8.15 a.m. to 12.45 p.m.
Saturdays: 8 a.m. to 6 p.m.

Luton Town

Shirts White
Shorts Black
Stockings Black with White Tops

2 Dunne
Right Back
4 Morton
Right Half
7 Bingham
Outside Right
8 Brown
Inside Right

Referee:

Mr. J. G. WILLIAMS
(Nottingham)

11 Holden
Outside Left
10 Parry
Inside Left
6 Edwards
Left Half
3 Banks
Left Back

Bolton Wanderers

Shirts Red
Shorts White
Stockings Red and White

Spectators are asked NOT TO CROSS THE PLAYING FIELD after the match

Baynham

Goal

5 Kelly
Centre Half
9 Turner
Centre



Stevens
Centre
5 Higgins
Centre Half

Hopkinson

Goal

Football League — Div. 1

3 Hawkes. K.
Left Back

6 Groves
Left Half

10 Cummins
Inside Left
11 Kilgannon
Outside Left

Linesmen:

Red Flag:
Mr. C. W. Jillings (Romford)

Orange Flag:
Mr. J. Jones (Ruislip)

8 Hill
Inside Right
7 Birch
Outside Right

4 Stanley
Right Half
2 Hennin
Right Back

Kick-off 3 p.m.

**PICK
FLOWERS
BREWMASTER**



Make the MOST of the
**NEW CREDIT
FACILITIES**

at
Scriven's
for
**ALL THINGS
ELECTRICAL**

H. F. Scriven
LIMITED

18, BUTE STREET, LUTON
Telephone: Luton 5517-8

27-28, SUN STREET, HITCHIN
Telephone: Hitchin 4756

93, HIGH STREET, STEVENAGE
Telephone: Stevenage 1847

Harry Canham & Son

Export Packers
Export Leatherboard Post Boxes
Cardboard Box - Packing Case
Ply Box and Crate Manufacturers
GROVE ROAD, LUTON, Beds.

Telephone:
LUTON 458

**W. CHAMBERLAIN
& CO., (LUTON) LTD.**
General Hardware Merchants

VALSPAR Lacquer and Flat Wall Paint
MEREDITH'S
Celebrated Merlac Paint, Stains and Varnishes
SISSON'S PARIPAN
Siscolin Distemper: Enamels and Water Paint

Wallpapers and Borders etc.

ALL GARDEN REQUISITES
166, Dunstable Road, Luton
Telephone 329 Enquiries Invited

HOW WELL CAN YOU SAVE?

Open an account with us and watch your savings grow

**BEDFORDSHIRE
BUILDING SOCIETY**

38, HIGH STREET NORTH, DUNSTABLE
109, BLETCHLEY ROAD, BLETCHLEY

20, HIGH STREET, HITCHIN
32, VICTORIA STREET, ST. ALBANS

Chief Office: 77-83, Harpur Street, Bedford
Deposits in this Society are Trustee Investments



**HELEY'S
RESTAURANT**

MILL STREET
NEXT TO GAUMONT CINEMA

Special Fish and Chip
Dinners and Teas
SERVED ON MATCH DAYS

Seating Accommodation: 90

'Phone: Luton 3730 Proprietor: R. A. Heley

For all HEATING and VENTILATING

District Heat and
Engineering Co.

(The Industrial Division of
Frank Moody & Co.
(Engineers) Ltd.)

56, CHAPEL STREET
LUTON, Beds.

Telephone: Luton 374

WARDEN TAVERN

2½ miles out of Luton
on main Bedford Road

Proprietor - Tom Hodgson
Ex-Captain, Luton Town F.C.



Telephone: ICKNIELD 277

Wedding Receptions
Luncheons, Social Functions
Evening Parties
Fully Licenced Large Car Park

Printing of Quality

E. A. ALLEN
AND SON (Luton) LTD.
424, Dunstable Road
LUTON

Telephone: Luton 51626

Today's Half-Time Scores

NOTE: The letter in the Programme corresponds with the letter on the Board—thus A 0-1 means that the first named club has scored 0 and their opponents 1.

FIRST LIST

A Arsenal	Tottenham H.
B Birmingham	Manchester U.
C Blackburn R.	Sheffield Wed.
D Blackpool	Notts. Forest
E Chelsea	Burnley
F Everton	Fulham
G Manchester C.	Wolverh'pton
H Newcastle U.	Preston N. E.
K West Brom.	Leicester City
L West Ham U.	Leeds United
M Brighton & H.	Portsmouth
N Bristol Rov.	Aston Villa

SECOND LIST

A Cardiff City	Bristol City
B Huddersfield	Leyton O.
C Hull City	Charlton Ath.
D Ipswich Town	Lincoln City
E Middlesbro'	Plymouth A.
F Rotherham U.	Scunthorpe U.
G Sheffield Utd.	Liverpool
H Stoke City	Derby County
K Swansea T.	Sunderland
L Barnsley	Southend Utd.
M Bradford City	Chesterfield
N Bury	Mansfield T.

THIRD LIST

A Coventry City	Swindon T.
B Grimsby T.	Accrington
C Q.P.R.	Newport Co.
D Reading	Brentford
E Shrewsbury	Norwich City
F Southampton	Colchester U.
G Tranmere R.	Port Vale
H Wrexham	Bournemouth
K York City	Halifax Town
L Barrow	Crewe Alex.
M Walsall	Crystal Palace
N Leyton O. Res.	Luton T. Res.

BUNTY COACHES

Football Excursion
SATURDAY,
12th SEPTEMBER, 1959

FULHAM

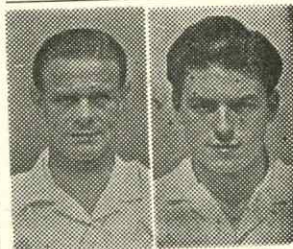
V.
LUTON TOWN
DEPART DUNSTABLE 12 noon
LUTON 12.30 p.m.

Fare 8/- Fare

Travel House

21, Leagrave Rd., Luton
Tele.: 5855/6

202, High Street South
Dunstable Tel. 100



Wally Shanks Gordon
Shanks Turner

Sports Outfitters

109-111, Bury Park Rd.
LUTON Phone 7634

and
20, West St., Dunstable
Phone 1533

Suppliers to Luton Town F.C.
Club Secretaries
Especially Welcome

For ALL your
Pharmaceutical
Toilet and
Photographic
Requirements

REIDS CHEMISTS

(Luton) Ltd.

169, Dunstable Road
LUTON

(Corner of Kenilworth Road)

PHONE - - LUTON 760

DIVISION I and FOOTBALL COMBINATION FIXTURES :: 1959-1960

1959	FIRST XI—Division 1	Attendance	1958/9	F	A	1959	Reserve XI Fixtures	Attendance	1958/9	F	A
Aug. 22 Sat.	Everton	38539	1 3 A	2 2		Aug. 22 Sat.	Ipswich Town	2143	1 5 H	3 4	
" 26 Wed.	Blackpool	19095	H 0 1			" 26 Wed.	Brighton & H. A.	2827	1 1 A	2 2	
" 29 Sat.	Leeds United	15822	1 1 H	0 1		" 29 Sat.					
" 31 Mon.	Blackpool	22008	0 3 A	0 0							
Sept. 5 Sat.	Bolton Wand.		0 0 H			Sept. 5	Leyton Orient		1 5 A		
" 9 Wed.	Manchester City		5 1 H			" 12	Bournemouth		1 4 A		
" 12 Sat.	Fulham		A			" 19	Nottingham Forest		4 1 H		
" 16 Wed.	Manchester City		1 1 A			" 26	Portsmouth				
" 19 Sat.	Notts. Forest		5 1 H			Oct. 3	Arsenal		1 1 A		
" 26	Sheffield Wed.		A			" 10	Leicester City		0 2 H		
Oct. 3	Wolverhampton		0 1 H			" 17	Bristol City		0 1 A		
" 10	West Ham United		0 0 A			" 24	Charlton Ath.		1 1 H		
" 17	Chelsea		2 1 H			" 31	Tottenham H.		0 1 A		
" 24	West Brom. Albion		0 2 A			Nov. 7	Birmingham C.		1 2 H		
" 31	Burnley		6 2 H			" 14	Southampton		A		
Nov. 7	Birmingham C.		1 0 A			" 21	Chelsea		2 1 H		
" 14	Tottenham H. (1)		1 2 H			" 28	West Ham United		3 3 A		
" 21	Manchester United		1 2 A			Dec. 5	Bristol City		1 3 H		
" 28	Preston N. End		4 1 H			" 12	Leicester City		1 4 A		
Dec. 5	Leicester City (2)		1 3 A			" 19	Ipswich Town		1 5 A		
" 12	Newcastle U.		4 2 H			" 26	Southend Utd.		H		
" 19	Everton		0 1 H			1960					
" 26	Arsenal		0 1 A			Jan. 2 Sat.	Southend United		A		
" 28 Mon.	Arsenal		6 3 H			" 9					
1960						" 16	Leyton Orient		3 1 H		
Jan. 2 Sat.	Leeds United		1 1 A			" 23	Bournemouth & B.		A		
" 9	F.A. Cup—3					" 30	Swansea Town		5 2 H		
" 16	Bolton Wanderers		4 2 A			Feb. 6	Nott. Forest		2 1 H		
" 23	Fulham		H			" 13	Portsmouth		1 0 A		
" 30	F.A. Cup—4					" 20	Arsenal		3 3 H		
Feb. 6	Nottingham Forest		1 3 A			" 27	Charlton Athletic		4 3 A		
" 13	Sheffield Wed.		H			March 5	Tottenham H.		2 0 H		
" 20	Wolverhampton (5)		0 5 A			" 12	Birmingham C.		3 2 A		
" 27	Leicester City		4 3 H			" 19	Southampton		H		
March 5	Chelsea		3 3 A			" 26	Chelsea		0 3 A		
" 12	West Brom. (6)		1 1 H			April 2	West Ham Utd.		H		
" 19	Newcastle Utd.		0 1 A			" 9					
" 26	Birmingham (S.F.)		0 1 H			" 16	Swansea Town		2 1 A		
April 2	Tottenham H.		0 3 A			" 23					
" 9	Manchester Utd.		0 0 H			" 30	Brighton & H. A.		4 2 H		
" 15 Fri.	Blackburn Rov.		1 3 A								
" 16 Sat.	Burnley		2 2 A								
" 18 Mon.	Blackburn Rov.		1 1 H								
" 23 Sat.	West Ham Utd.		4 1 H								
" 30	Preston North End		0 0 A								
May 7	F.A. Cup—Final										

LEAGUE TABLE 1959-60

Up to and including Wednesday, September 2nd

DIVISION ONE

	P.	W.	D.	L.	F.	A.	Pts.
Blackburn Rov.	4	3	1	0	10	2	7
West Ham United	4	3	1	0	9	3	7
Tottenham H.	4	2	2	0	9	4	6
Wolverhampton W.	4	2	2	0	9	6	6
Burnley	4	3	0	1	11	8	6
Blackpool	4	2	1	1	4	3	5
Leicester City	4	2	1	1	7	7	5
Sheffield Wednesday	4	2	1	1	5	5	5
Arsenal	4	1	2	1	7	5	4
Manchester United	4	2	0	2	11	9	4
West Bromwich	4	1	2	1	7	7	4
Manchester City	4	2	0	2	7	8	4
Fulham	4	2	0	2	7	9	4
Preston North End	4	0	3	1	7	8	3
Leeds United	4	1	1	2	6	7	3
Birmingham C.	4	1	1	2	4	5	3
Chelsea	4	1	1	2	9	13	3
Newcastle Utd.	4	1	0	3	7	12	2
BOLTON W.	4	1	0	3	4	8	2
LUTON TOWN	4	0	2	2	2	4	2
Nottingham Forest	4	0	2	2	4	8	2
Everton	4	0	1	3	6	11	1

NEXT MATCHES

Wednesday, 9th September, 1959

FOOTBALL LEAGUE—DIVISION 1

LUTON TOWN

V.

MANCHESTER C.

Kick-off 6.15 p.m.

PRICES of ADMISSION Centre Stand 7/-
Wing Stand 5/6 Enclosure 4/-, Boys 2/-
Bobbers Stand 3/-, Boys 1/3 Terraces 2/-, Boys 1/-

Saturday, 12th September

FOOTBALL COMBINATION

Luton Town Reserves

V.

Bournemouth Res.

Kick-off 3 p.m.

PRICES of ADMISSION Centre Stand 2/-
Wing Stand and Enclosure 1/6, Boys 1/-
Bobbers Stand 1/3, Boys 10d.
Terraces 1/-, Boys 9d.

Established a Century

G. A. WILD & SONS

LIMITED

The Sports and Leather Goods Specialists

14, Manchester Street

9a, Wellington Street

Telephone : Luton 780

LUTON

Telephone : Luton 1842

41, High Street North, Dunstable

TELEPHONE :
DUNSTABLE 275

Suppliers to the

LUTON TOWN F.C., WATFORD F.C., LEEDS UNITED F.C.

BEDFORD TOWN F.C. DUNSTABLE TOWN F.C.

and many other leading Clubs



"UMBRO" IS WORN BY LUTON TOWN F.C.

"UMBRO" SPORTSWEAR
is the choice of CHAMPIONS

STYLED BY

Matt Busby and Teddy Tinling

"UMBRO"

IS WORN AT WEMBLEY AND WIMBLEDON

BY THE WORLD'S LEADING PLAYERS

INSIST ON SPORTSWEAR
STYLED BY



The Choice of Champions

HOCKEY, RUGBY, BADMINTON, SQUASH, TABLE TENNIS, BILLIARDS,
SNOOKER, DARTS and ALL INDOOR GAMES — The finest selection of sports
equipment and clothing in the County.

Meccano, Dinky Toys, Hornby Dublo, Corgi Toys, Matchbox Series

Travel Goods and Handbags — A wonderful selection