

MONDAY, 6th APRIL, 1959.

Price : One Penny.

Kick-off, 7-0 p.m.

R**Preston North End**
(Colours: White shirts, Blue shorts)**L**

1 ELSE				
2 CUNNINGHAM		3 WALTON		
4 O'FARRELL	5 MATTINSON		6 SMITH	
7 DAGGER	8 THOMPSON	9 HATSELL	10 BAXTER	11 TAYLOR

Referee: H. WEBB (Leeds)

Linesmen: Red Flag—W. H. Darlington

Yellow Flag—K. C. Hesketh

ADAM 11	CUMMINS 10	MORTON 9	TURNER 8	BROWN 7
PACEY 6	KELLY 5		GROVES 4	
DUNNE 3		McNALLY 2		
BAYNHAM 1				

L**Luton Town**
(Colours: Red shirts, White shorts)**R****NEXT HOME MATCHES**

Wednesday next, the 8th April, 1959

Kick-off 7.0 p.m.

PRESTON NORTH END RES. v. LEEDS UNITED RES.

Saturday next, the 11th April, 1959

Kick-off 3.0 p.m.

PRESTON NORTH END v. ASTON VILLA

Monday, 13th April, 1959

Kick-off 7.0 p.m.

**Preston and District
Amateur Football League Guildhall Cup Final
ENGLISH ELECTRIC v. GREENBANK CELTIC**

Tuesday, 14th April, 1959

Kick-off 7.0 p.m.

**Catholic League, Sargeant Cup Final
ST. GREGORY'S v. ST. JOSEPH'S**

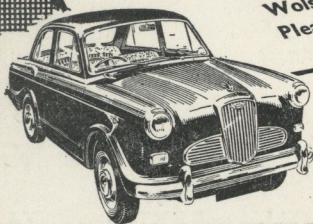
Wednesday, 15th April, 1959

Kick-off 7.0 p.m.

**Sunday School League — Riding Cup Final
ST. AMBROSE (Leyland) v. ST. MICHAEL'S**

Invitation

We shall be delighted to
arrange a trial run in the
Wolseley of your choice.
Please phone, write or call.



FIFTEEN HUNDRED

A compact, easy-to-park, luxury car giving a high performance with economy. 1,500 c.c. O.H.V. engine, 4-speed gearbox. Ideal for business and as a family car.

£530 plus £266.7.0 P.T.

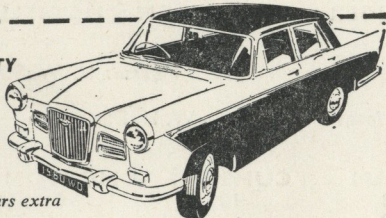
Fleet model £497 plus £249.17.0 P.T.

FIFTEEN-SIXTY

Luxuriously appointed, the 15/60 seats 4 to 5 adults in comfort. Features include Panoramic vision, 19 cu. ft. boot, polished wood facia, 1½ litre O.H.V. engine.

£660.0.0 plus £331.7.0 P.T.

(inc. Heater) Duotone Colours extra

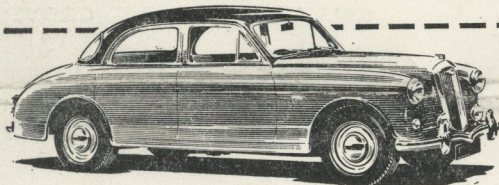


SIX-NINETY

£850.0.0.

plus £426.7.0 P.T.

Duotone Colours
extra



A full 6-seater saloon, beautifully finished and powered by a 6-cylinder O.H.V. engine. Automatic Transmission or Overdrive is available as an extra.

— — Buy wisely — buy — — — — —

WOLSELEY



Twelve Months' Warranty
and backed by B.M.C. Service—
the most comprehensive in Europe

For full details apply

LOXHAMS Morriservices Ltd.

CORPORATION STREET, PRESTON

TELEPHONE 4247 (6 Lines)

and at SUDELL CROSS, BLACKBURN 'Phone 7116 (5 lines)