

# **EVERTON**

## **FOOTBALL CLUB**

**GOODISON PARK  
LIVERPOOL**

**OFFICIAL**



**PROGRAMME**

---

**FOOTBALL LEAGUE MATCH**

**EVERTON v.  
LUTON TOWN**

**MONDAY, 30th MARCH, 1959**

**Kick-off 3 p.m.**

---

**PRICE THREEPENCE**



# EVERTON FOOTBALL CLUB CO. LTD.

Chairman: R. E. SEARLE

Vice-Chairman: F. MICKLESFIELD

J. C. SHARP	N. W. COFFEY
C. E. BALMFORTH	C. H. ASKHAM
J. TAYLOR	R. A. JOYNSON
E. HOLLAND HUGHES	

Manager: J. J. CAREY

Secretary: W. DICKINSON

## EVERTONIA

### LUTON TOWN

Who would have thought at the beginning of the season that within the space of fourteen days in March that Goodison Park fans would have the opportunity of seeing three of the four F.A. Cup semi-finalists for 1959? It is a remarkable but happy coincidence and it will provide us with a unique opportunity to compare styles and methods and to weigh the comparative abilities of three of the four clubs to fight through from the third round. Villa we have already played; we play host today to Luton Town and a week on Saturday we entertain the other Cup Final side in Nottingham Forest.

The back room boys at Kenilworth Road, Luton's home, have always had rather an uphill battle. The reason is that their ground is, judged by First Division standards at any rate, only a very small one. The ground record is only 28,433 and that was set up for a cup-tie against Arsenal of all people. It is a question of making the most of one's resources and Town have done just that for many years now; much credit must go to those people responsible for coaxing Luton along to the forefront recently. Managed for a number of seasons by Dally Duncan, of ex-Scotland and Derby County fame, the Bedfordshire club has been without a manager since Mr. Duncan's move to Blackburn last October to take over the Ewood Park reins from our own Mr. Carey. It is then a great achievement for Luton Town to have reached the end of the cup road; it has been reported widely in the press that veteran star centre-half Syd Owen, who has had a lot to do with his team's success in recent months, will retire from the playing side of the game at the end of this season and will take up the managership of the club he has served so well. Should this come about, we know that he will have the best wishes of everyone in soccer to help him on his way in a new phase of his career. This is his twelfth season with Luton Town, joining the club from Birmingham City in 1947 as a left-half.

Luton Town can field a side today which compares very favourably with most clubs from the point of view of team work, ability and individual talent. The team work and ability generally has been fashioned to such good effect that Luton will appear at Wembley on May 2nd; the individual ability can be judged by the number of International players that the Southern club can boast in their first XI. Whilst it would be untrue to say that Alan Brown and Billy Bingham were discarded by their clubs, it was certainly a stroke of good football business that took them onto the Luton payroll. Blackpool and Sunderland respectively were prepared to release two men whom they thought would do better elsewhere and they did just that. Costing

Blackpool £26,000 from East Fife, Alan Brown had the cruellest of luck in breaking his leg and suffering other serious injuries which prevented him playing not only on several occasions for his country but put paid to his hopes of two Cup Final appearances with Blackpool at Wembley. His power and weight in the Luton forward line, allied to his Scottish craft, have shown abundantly what a great player he is. The diminutive Billy Bingham at outside-right was another player who moved South in an endeavour to realise more fully his football abilities. His semi-final goal against Norwich City alone must have repaid a large portion of the quite modest fee paid for him. Another Eire International who has contributed much to Luton's success is our own ex-player, inside-forward George Cummins, a ball player of much ability.

Luton Town was the first Southern club to employ professional players. Formed from a fusion of two clubs named Wanderers and (very grandly) Excelsior, the new Town club were the pioneers in fielding the first full team of professionals. In 1890, three players (names not known) were offered and accepted the princely sum of five shillings a week. It seems a ludicrous sum in these days of inflated prices, when many schoolchildren receive as much or more for their weekly pocket money, but sixty nine years ago there were no complaints; it took courage to throw in one's lot with professional football which was a most doubtful quantity in those days. Luton Town are known as the Hatters and they actually turned a team out on a number of occasions wearing, of all things, pink and blue hats in the cricket style. Town were also one of the nine founder members of the Southern League, finishing in runners-up position in 1894-95, and 1895-96 seasons. 1897-98 saw them elected to Division II of the Football League but lasted only a couple of seasons and back they went to the Southern league to re-join such teams as West Ham, Portsmouth and Spurs. Luton jumped up into Division II again in 1936-37 and then in 1954-55 were promoted to Division I along with Birmingham.

We feel that our supporters might like to see the milestones trodden by Luton Town on the long, hard road to Wembley so we give, in detail, Town's cup progress since they entered in round three in January.

Round 3				Round 6			
Luton Town	5	Leeds Utd.	1	Blackpool	1	Luton Town	1
Bingham	2	Shackleton		Charnley		Bingham	
Gregory	2			H.T.	0-0		30,634
Morton							
H.T.	1-0	£2,850;	18,354				
Round 4				Round 6 Replay			
Leicester City	1	Luton Town	1	Luton Town	1	Blackpool	0
McNeil		Bingham		Brown			
H.T.	0-0	£5,996;	36,984	H.T.	0-0	£4,600;	30,069
Round 4 Replay				Semi-Final			
Luton Town	4	Leicester City	1	(At White Hart Lane)			
Brown	3	Leek		Luton Town	1	Norwich City	1
Gregory				Brown		Brennan	
H.T.	2-0	25,000		H.T.	1-0		63,000
Round 5				Semi-Final Replay			
Ipswich Town	2	Luton Town	5	Norwich City	0	Luton Town	1
Rees	2	Pacey				Bingham	
		Bingham		H.T.	0-0		49,500
		Gregory					
		Morton	2				
H.T.	1-4	26,700					

The records used in our Musical Programmes have been supplied and can be obtained from ROBERT CREACES MUSIC STORES, 14 County Road, Walton (H.M.V. Record Agent — 5 minutes from Goodison Park).

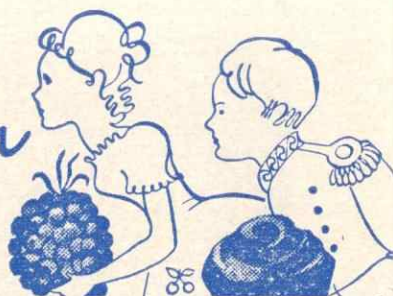


HATS OFF to

*Barker & Dobson*

CAMEO CHOCOLATES  
REGAL FRUIT DROPS

Makers of finer Chocolates and Confectionery since 1834



**\*No more home matches will be postponed through frost or snow thanks to MANWEB**

\*Over thirty miles of soil-warming cable installed by Manweb keep frost and snow off the Everton pitch. You may not need a soil-warming system but electricity will warm your rooms, heat your water and cook your food better than anything else.



Ask MANWEB for a free estimate for wiring. No job too small - or too large.

**GET UP TO DATE - GO ELECTRIC**

MERSEYSIDE AND NORTH WALES ELECTRICITY BOARD



football fans  
read

**NEWS  
OF THE  
WORLD**

expert reports



EVERTON		
Right	(Blue Jerseys) DUNLOP (1)	Left
	PARKER (2)      BRAMWELL (3)	
	HARRIS, B. (4)      JONES (5)      MEAGAN (6)	
	HARRIS, J. (7)      THOMAS (8)      COLLINS (10)      LAVERICK (11)	
	HICKSON (9)	
<div>Referee:</div> <div>Mr. K. Howley (Middlesbrough)</div> <div>JACK SHARP SPORTS LIVERPOOL</div> <div>Linesmen:</div> <div>Messrs. H. V. Allsop (Yellow Flag) and B. Dennett (Red Flag)</div>		
	MORTON (9)	
ADAM (11)	CUMMINS (10)	BROWN (8)      BINGHAM (7)
PACEY (6)	KELLY (5)	GROVES (4)
	HAWKES (3)	DUNNE (2)
	BAYNHAM (1)	
Left	(White Jerseys)	Right
LUTON TOWN		

**Littlewoods**

**the store  
for super  
value**

CHURCH ST - LIVERPOOL

Tel. BOOtle 2538/9

Tel. BOOtle 2530

**LAWRENSEN'S**

LUXURY COACHES

MERTON ROAD, BOOTLE

Official Contractors to Everton Football Club

Special Excursions by Road  
for "Away" Matches

Daily Tours  
Private Parties

"Agents for British and Continental Motor Tours"



**BEFORE and AFTER**  
the match ....  
**WHY NOT VISIT**  
**LIVERPOOL'S LATEST**  
**SANDWICH BAR**



**Bent's 'WHY NOT'**  
HARRINGTON ST. (Off North John St.)

Freshly cut  
sandwiches  
always available  
• FULLY LICENSED



## Luton Town Pen Pictures

**R. BAYNHAM (Goalkeeper).**—This tall, well-built player is one of the best 'keepers in the country. He first played for Worcester City and his great displays attracted the attention of many League clubs. He joined Luton in 1951 and in the 1952-53 season displaced their international goalkeeper Bernard Streten. This proved only the start, for less than two years later Baynham had been capped for England in internationals against Denmark, Spain and Ireland.

**SEAMUS DUNNE (Right-back).**—One of three Eire internationals on Luton's books, Dunne has been an almost automatic choice for club and country for the past four seasons. He now holds 11 caps and played in the last match against Poland in October. A native of Wicklow—he arrived at Luton via the Irish League Club, Shelbourne in 1950.

**BRENDAN McNALLY (Right-back).**—Had only made the occasional appearance in Luton's senior side until Dunne's injury prior to the Third Round of the F.A. Cup versus Leeds on January 10th. Joined Luton from Shelbourne the Irish League Club.

**KEN HAWKES (Left-back).**—A player who has made considerable strides since returning to the Club after National Service in 1953. Was spotted when playing for Shotton Colliery Welfare by the Club's Northern Scout and made a big impression. Last season he made 22 first team appearances.

**SYD OWEN (Centre-half).**—Luton's first team centre-half for many years now. An imposing figure on any soccer field he has won many representative honours including full internationals against Hungary, Yugoslavia and Belgium in 1954 since joining the Club from Birmingham City in 1947. Was originally a wing-half.

**DAVID PACEY (Left-half).**—Made his name with Hitchin Town and was still an amateur when he joined the forces. Joined Luton as a professional in August, 1956. Gained a regular first team place when Pearce moved to Sunderland last season.

**BILLY BINGHAM (Outside-right).**—Luton paid a five figure fee to Sunderland for the transfer of Irish International Billy Bingham last July. Has represented his country, Ireland, in every international game since 1952.

**ALAN BROWN (Inside-right).**—A Scottish International with 14 caps to his credit Brown was transferred from Blackpool to Luton during the 1956-1957 season. Began his League career with East Fife.

**BOB MORTON (Centre-forward).**—Has appeared in the League side at centre-forward during the last few matches but of course is well known as one of the strongest and most consistent wing-halves in the First Division. Was chosen as reserve for England versus Russia at Wembley this season.

**GEORGE CUMMINS.**—The third of Town's Eire internationals, Cummins joined Luton from Everton for a five figure fee in 1953. Since then he has won ten caps, the last being against Poland in October this year.

**TONY GREGORY (Outside-left).**—A local boy who played for Bedfordshire's youth team, earned youth caps for England and was also a member of Bedfordshire's team in the Southern Counties Amateur Championship. Is in his fourth season with the Club. Has recently become a full-time professional player upon completing his apprenticeship at a local works. Is now serving his National Service.

**GORDON TURNER (Inside-right).**—A free scoring forward. Turner scored 30 goals last season. Has played for the Football League and been a reserve for the England 'B' team.



# Wise Buy!

# A1 LIGHT

A BLEND OF VIRGINIA  
& OTHER CHOICE TOBACCOS

HANDY PACK

## 1/9½

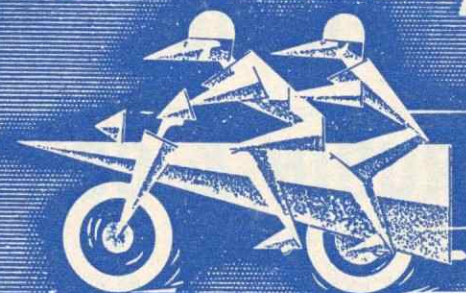


THE TOBACCO THAT MAKES  
BETTER, FRESHER,  
CIGARETTES

A 136

## DART IN for a —

# Double Top



Higson's Brown Ale



## HALF-TIME SCORES

### LEAGUE DIVISION I

A	...	ARSENAL v. BIRMINGHAM C.	...	...	.....	.....
B	...	ASTON VILLA v. TOTTENHAM H.	...	...	.....	.....
C	...	CHELSEA v. BLACKPOOL	...	...	.....	.....
D	...	LEICESTER C. v. BOLTON W.	...	...	.....	.....
E	...	MANCHESTER C. v. WEST BROM. A.	...	...	.....	.....
F	...	NEWCASTLE U. v. WEST HAM U.	...	...	.....	.....
G	...	PORTSMOUTH v. MANCHESTER U.	...	...	.....	.....
H	...	PRESTON N. E. v. BURNLEY	...	...	.....	.....
J	...	WOLVES v. LEEDS UTD.	...	...	.....	.....

### LEAGUE DIVISION II

K	...	BARNESLEY v. LIVERPOOL	...	...	.....	.....
L	...	BRIGHTON & H. A. v. SHEFFIELD U.	...	...	.....	.....
M	...	BRISTOL R. v. SWANSEA T.	...	...	.....	.....
N	...	CHARLTON A. v. CARDIFF C.	...	...	.....	.....
O	...	DERBY COUNTY v. STOKE CITY	...	...	.....	.....
P	...	HUDDERSFIELD T. v. MIDDLESBROUGH	...	...	.....	.....
Q	...	IPSWICH T. v. BRISTOL C.	...	...	.....	.....
R	...	LEYTON O. v. SUNDERLAND	...	...	.....	.....
S	...	ROTHERHAM U. v. GRIMSBY T.	...	...	.....	.....
T	...	SCUNTHORPE U. v. LINCOLN C.	...	...	.....	.....
U	...	SHEFFIELD W. v. FULHAM	...	...	.....	.....

### LEAGUE DIVISION III

V	...	HULL CITY v. TRANMERE R.	...	...	.....	.....
W	...	READING v. WREXHAM	...	...	.....	.....

### LEAGUE DIVISION IV

X	...	CHESTER v. SOUTHPORT	...	...	.....	.....
---	-----	----------------------	-----	-----	-------	-------

### CENTRAL LEAGUE

Y	...	CHESTERFIELD v. EVERTON	...	...	.....	.....
---	-----	-------------------------	-----	-----	-------	-------

## NEXT MATCH HERE

SATURDAY NEXT, APRIL 4th, 1959

CENTRAL LEAGUE

# v. HUDDERSFIELD TOWN

Kick-off 3.15 p.m.

Usual Prices

## L. I. RUBIN & CO. LTD.

### ESTATE AND MORTGAGE AGENTS

HOUSES FOR SALE IN ALL DISTRICTS OF MERSEYSIDE  
MAXIMUM MORTGAGES ARRANGED

**87 LORD STREET**

CENtral  
4531-2-3

**LIVERPOOL 2**