



LEICESTER CITY FOOTBALL CLUB

SEASON 1958—59

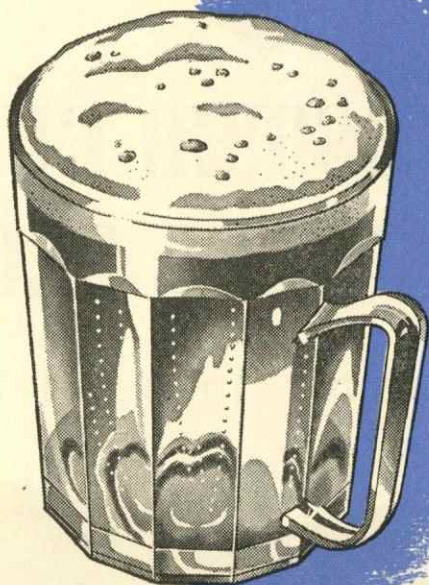
OFFICIAL **4^D** PROGRAMME

F.A. CUP FOURTH ROUND

Saturday, 24th January, 1959

LEICESTER CITY v. LUTON TOWN

After a first class game



have a first class beer



Brewers since 1849

EVERARDS

GENTLEMEN — *the best!*

LEICESTER CITY FOOTBALL CLUB CO. LTD.

Chairman: T. S. BLOOR.

Vice-Chairman: W. S. G. NEEDHAM,

Directors:

A. E. PALLETT

D. E. SHARP

L. T. SHIPMAN

W. A. WILEMAN

J. H. BURRIDGE

Secretary: C. A. MALEY.

Acting Manager: MATT GILLIES

Matt Gillies says . . .

THE few days at Blackpool last weekend did us all good. At this stage of the season players' physical condition requires little attention.



All are fully tuned up, but occasionally a little mental toning-up helps them to retain that razor-edged keenness so necessary in highly competitive football.

And to get that, a change of scenery and a change of air help to provide the relaxation that comes from altering the routine methods.

The weather at Blackpool was not particularly good, but long walks, sessions in the swimming baths and some organised entertainment in the evenings helped to make it a happy party. And

if it has helped us to beat Luton this afternoon, it will have been well worth it.

LEICESTER CITY

Colours : Blue Shirts, White Knickers.



LUTON TOWN

Colours : White Shirts, Black Knickers.

HALF-TIME SCORES

BLUE PLATE

A	NOTTS. FOREST v. TOOTING & MITCHAM
B	BRISTOL CITY v. BLACKPOOL
C	CHARLTON v. EVERTON
D	CHELSEA v. ASTON VILLA
E	COLCHESTER v. ARSENAL
F	PRESTON N.E. v. BRADFORD CITY
G	TOTTENHAM v. NEWPORT
H	WEST BROM. v. BRENTFORD
J	WOLVES v. BOLTON
K	WORCESTER v. SHEFFIELD UTD.
L	FULHAM RESERVES v. LEICESTER CITY RESERVES

FIXTURE LISTS 1958 - 59

First Division

Date	Name of Club	Gr.	F.A.	Date	Name of Club	Gr.	F.A.
1958				1959			
Aug. 23	Everton ..	H	2-0	Jan. 3	Arsenal ..	H	2-3
" 25	Blackburn R. ..	A	0-5	" 10	(3) Lincoln ..	H	1-1
" 30	Arsenal ..	A	1-5	" 14	(3 Replay) Lincoln ..	A	2-0
Sept. 3	Blackburn R. ..	H	1-1	" 17	Manchester C. ..	A	Posp.
" 6	Manchester C. ..	H	3-1	" 24	(4) Luton Town ..	H	
" 13	Leeds Utd. ..	A	1-1	" 31	Leeds ..	H	
" 17	Preston N.E. ..	H	2-2	Feb. 7	West Brom. A. ..	A	
" 20	West Brom. A. ..	H	2-2	" 14	(5) Birmingham ..	A	
" 22	Preston N.E. ..	A	1-3	" 21	Luton Town ..	A	
" 27	Birmingham ..	A	2-4	" 28	(6) Newcastle ..	H	
Oct. 4	Luton Town ..	H	3-1	Mar. 7	Tottenham H. ..	A	
" 11	Newcastle U. ..	A	1-3	" 14	(S.F.) Chelsea ..	H	
" 18	Tottenham H. ..	H	3-4	" 21	Blackpool ..	A	
" 25	Chelsea ..	A	2-5	" 27	Bolton W. ..	A	
" 29	Borussia (Dortmund) F'dly	H	2-2	" 28	Portsmouth ..	H	
Nov. 1	Blackpool ..	H	0-3	" 30	Bolton W. ..	H	
" 8	Portsmouth ..	A	1-4	April 4	Aston Villa ..	A	
" 15	Aston Villa ..	H	6-3	" 11	West Ham ..	A	
" 22	West Ham ..	A	3-0	" 18	Nottm. Forest ..	A	
" 26	Raith Rovers (Friendly)	H	3-3	" 22	Wolves ..	A	
" 29	Nottm. Forest ..	H	0-3	" 25	Manchester U. ..	H	
Dec. 6	Manchester U. ..	A	1-4	May 2	(Final)		
" 13	Wolves ..	H	1-0				
" 20	Everton ..	A	1-0				
" 26	Burnley ..	H	1-1				
" 27	Burnley ..	A	3-3				

Football Combination

Date	Name of Club	Gr.	F.A.	Date	Name of Club	Gr.	F.A.
1958				1959			
Aug. 23	Ipswich T. ..	A	1-0	Jan. 3	Swansea Town ..	A	4-2
" 27	Arsenal ..	H	0-1	" 17	Bristol Rovers ..	H	Posp.
" 30	Swansea ..	H	3-6	" 24	Fulham ..	A	
Sept. 6	Bristol R. ..	A	1-1	" 31	Birmingham ..	A	
" 13	Birmingham ..	H	2-0	Feb. 7	Luton Town ..	H	
" 20	Luton Town ..	A	2-0	" 14	Leyton Orient ..	A	
" 27	Leyton Orient ..	H	2-1	" 21	Chelsea ..	H	
Oct. 4	Chelsea ..	A	0-3	" 28	Cardiff ..	A	
" 11	Nottm. Forest ..	H	1-4	Mar. 7	Portsmouth ..	H	
" 18	West Ham ..	A	4-1	" 14	Bristol City ..	A	
" 25	Cardiff ..	H	5-0	" 21	Charlton Athletic ..	H	
Nov. 1	Portsmouth ..	A	2-3	" 28	Tottenham H. ..	A	
" 8	Bristol City ..	H	5-2	April 4	Brighton and Hove ..	H	
" 15	Charlton Athletic ..	A	2-1	" 11	Arsenal ..	A	
" 22	Tottenham H. ..	H	2-1				
" 29	Brighton & Hove ..	A	1-0				
Dec. 6	West Ham ..	H	3-0				
" 13	Nottm. Forest ..	A	3-1				
" 20	Ipswich Town ..	H	2-0				

Fixtures—Copyright of the Football League Ltd., and reproduced by their permission under Licence No 2.

NO ONE WAS THE LOSER

THE attendances at the three floodlit Cup matches on Monday are significant.

Newcastle United versus Chelsea game attracted 57,038 spectators, Sheffield Wednesday and West Bromwich Albion drew a gate of 50,455, and at the much smaller Deepdale ground, the Preston-Derby County replay was watched by 29,294, to give an aggregate of 136,787 and receipts of £20,446.

These figures do not only prove that floodlights pay—they may be a pointer to the future in relation to F.A. Cup ties and the shocking weather experienced last week.

One well-known manager has already announced that the Third Round should not start until February, when the worst weather should be behind us.

Unfortunately, the British weather is not governed by the calendar. Several of the biggest storms in post-war years have started in February, and postponements at that time of the season would cause fixture congestion later on.

A lot of hot air has been released recently over the question of the inability of clubs to keep their pitches in reasonable playing condition during the wintry weather.

And yet, the worst that has happened has been postponements of up to ten days in a few of the cup ties and the putting off of one game by the majority of League clubs.

But those three matches played under the lights on Monday attracted at least normal Saturday afternoon attendances, so no one has been the loser financially.

In view of this it might well be that once all grounds are equipped with floodlighting of the necessary standard, clubs will not hesitate, if there is any doubt about the pitch, to postpone a tie until a midweek night.

That would prevent teams having to play on skating rinks or mud-heaps. It would also help to attract more spectators to the matches.

THIS WEEK'S SHORT QUIZ.

1. Which F.A. Cup tie, excluding semi-finals or final, aggregated the highest attendance?
2. Who is the player credited with scoring the quickest goal in a Wembley F.A. Cup Final?
3. The Laws of the Game state the dimensions of a soccer pitch. What are they?

Answers on page 7.

CITY GAMES NEXT WEEK

- Saturday.** First Team v. Leeds United at Filbert Street. Kick-off 3 p.m.
- Saturday.** Reserves v. Birmingham City Reserves at Birmingham. Kick-off 3 p.m.

TODAY'S OPPONENTS

WELCOME to F.A. Cup opponents who we have twice beaten in the competition since the war. In 1949 City had two hectic struggles with Luton before overcoming them and going on to Wembley. In 1956 we triumphed by four goals to nil over the Hatters at Luton.

So today's meeting is the third time the teams have been drawn together in the post war competition.

And the results have not been encouraging to our visitors who, incidentally, lost their first League match of this season at Filbert Street on October 4th.

But they were not at full strength that day.

Versatile **Bob Morton**—one of the most accomplished wing halfbacks or centre forwards in the game—was reserve for England in the match against Ireland; that trustful winger, **Billy Bingham**, was playing for Ireland, and **Gordon Turner**, the leading scorer, was absent through injury.

Today's line up will show changes which will no doubt make for a stronger Luton side.

In goal is international **Ron Baynham** who has in front of him Irishman **Brendan McNally** and **Ken Hawkes** from County Durham.

Middle line strength is represented by two Luton finds from the amateur ranks—**John Groves** and **David Pacey**.

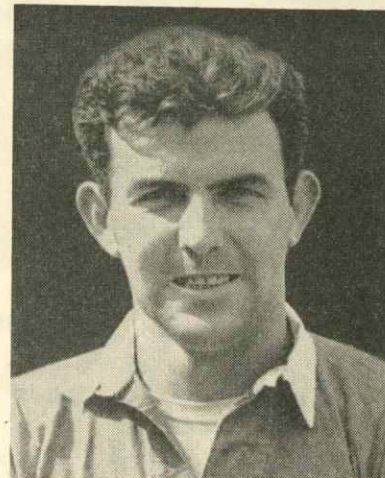
They are wing halves, and between them is that stalwart **Syd Owen** who has also worn the England jersey.

Bingham's partner recently has been Scottish international **Allan Brown**, a dangerous forward in front of goal, with **Bob Morton** leading the attack in place of Gordon Turner.

On the left wing another Luton local discovery, **Tony Gregory**, partners Irishman **George Cummins**.

All in all a talented line up of players who will be anxious to reverse that October defeat.

OUR PLAYERS



—Photo by courtesy of the "Sports Mercury"

JOHN OGILVIE, Scottish left back. Hard tackler with a sound sense of anticipation, Ogilvie also has something valuable to any footballer—a keen sense of humour.

ANSWERS TO THE SHORT QUIZ.

1. The 1938 fifth round between Aston Villa and Charlton. The first match at The Valley drew 76,031 spectators, the first replay at Villa Park 61,530, and the second at Highbury 64,782, to give an aggregate of 202,343.
2. Jackie Milburn of Newcastle United. In the 1954-55 final against Manchester City he netted in the 50th second.
3. The field of play shall not be longer than 130 yards and less than 100 yards. The breadth must not be less than 50 yards and not more than 100 yards. In international matches the length shall not be more than 120 yards and not less than 110 yards. The breadth must not exceed 80 yards nor be less than 70 yards.

CARS
HUMBER · HILLMAN · SUNBEAM

See
CASTLES
first

SERVICE
HUMBER · HILLMAN · SUNBEAM

CASTLES MOTOR CO. (LEICESTER) LTD. · CHURCH GATE · LEICESTER