

F.A. CUP—Round 3
LUTON TOWN
 v.
LEEDS UNITED

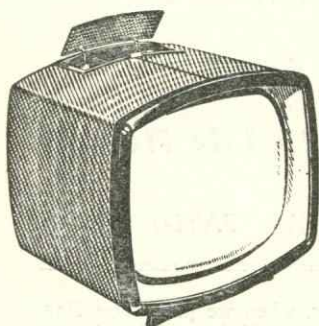


Official Programme

Price 3d.

SATURDAY, 10th JANUARY, 1959

NOW YOU CAN *a murphy* RENT



14 in. from 8/6 per week

17 in. from 10/6 per week

21 in. from 13/- per week

No Bills! No Worry! Details from

WILLIAMS & RICHARDSON

Proprietor: H. R. WILLIAMS

YOUR ***murphy*** DEALER

174, BISCOT ROAD, LUTON 'Phone: Luton 6897/8

LILLYWOODS Pools

The "Hardly" Pool (A Right Lot Here)

L ignum Bastard	1				
I gusi	2				
L ovoawood Pine	3				
L oblolly Pine	4				
Y atayba	5				
W awa	6				
H ornbeam	7				
I pe Peroba	8				
T aipoca	9				
E daballi	10				
S hagbark Hickory	11				

MAXIMUM AMOUNT
(as much as you can afford)

You don't believe it? Then please call at 39 Castle St. for verification

Post your coupon early to:
**39 CASTLE STREET
LUTON**

OUR REF. Nos. ARE
**LUTON 6282
LUTON 51421
DUNSTABLE 684
LUTON 52140**

No. 1

PASS ONE ON
TO YOUR
FRIEND
(if you have one)

**Lillywhites
LUTON
OFFER YOU
THE BEST**

IF YOU WANT
PUBLICITY
DON'T PAY—
AND
PUT A CROSS
HERE → ☐

I promise to pay.....
..... £.....s.....d.

CREDIT-ONLY

MR.
MRS.
MISS
ANY OTHER.....

Customers of no fixed abode
are NOT eligible

OUR TREBLE CHANCE

ASK FOR IT
GET IT
PAY FOR IT

The "SOFTLY" Pool

T rinidad Cedar	1			
I nsignis Pine	2			
M aritime Pine	3			
B alsam	4			
E astern Jack Pine	5			
R emarkable Pine	6			
NO LIMIT				

The Buyers Favourite Pool

3 DRAWS

L ow Prices	1			
S ervice	2			
D elivery	3			

YOU
MUST WIN

Lillywhite (Timber) Ltd.

have connections with other firms!

LILLYWHITE (Houghton Regis) LTD.

LEAGRAVE TIMBER CO. LTD.

CLUB NOTES

BRING out those rattles, wave that scarf, it's into battle we go again! Once more January is here and off we go on yet another quest along the trail to Wembley. Yes, its F.A. Cup time and the coveted trophy is the prize sought after by all the sixty four clubs from England and Wales in conflict today.

With four rounds to win before the semi-final it is a long, hard road before the opportunity knocks to play on the luscious green turf and before the exciting crowds of that mighty Wembley Stadium. This season we were privileged to be the team drawn FIRST out of the bag when the 3rd Round draw took place. Now, let us all combine to give that extra cheer of encouragement this afternoon and then, who knows, we may be the LAST team left in the competition!

In welcoming our Cup opponents Leeds United to Kenilworth Road today we must remember that they are, for us, as far as the Cup is concerned something of an unknown quantity. By the luck (or bad luck) of the draw we have never met before in all the competition's history. This should greatly add to the interest and spectacle of the game today, for each side will be out to impress the other with a showing of true cup-fighting spirit.

Both our Yorkshire opponents and ourselves have never really had the same good Cup fortune which has stayed with teams like Newcastle, Aston Villa, or in latter years, Bolton Wanderers. These teams have, too often, dominated the Final scene, but not so Leeds or Luton. In fact, neither of us have ever reached the semi-final. Unfortunately one Club is certain to remain in the same position after this fixture, for another year at least, so let's all hope it isn't Luton!

Last season the 3rd Round was a bad moment for our opponents today — and for us too! Leeds United had the luck last season to be drawn at home but the cheers of the Elland Road crowd could not inspire their team to overcome Cardiff City, who strode on to the next Round with a 2-1 victory. Our own showing was equally as dismal. Away to the Cheshire side, Stockport County we were well and truly beaten 3-0 and Stockport were only lowly Third Division opposition at the time, finishing the season just high enough to continue in that Division when the Fourth Division was formed. This all proves just how unpredictable the Cup trail can be. Undoubtedly each side today will be out to better last season's Cup performance.

Our home and away fixtures against Leeds in the League championship were quickly disposed of very early this season. Both matches were mid-week engagements as long ago as the last week in August and the first week in September. As you probably all remember each of these fixtures resulted in a 1-1 draw, although we consider ourselves unfortunate in not bagging the two points when we played at Elland Road. Leeds on the other hand were full value for the point they obtained at Kenilworth Road. Since the introduction of Don Revie into the attack Leeds seem to have found a new striking power which has given their fans fresh encouragement.

If our First Division record against Leeds is to be any indication of the result this afternoon we will still be taking a keen interest in the Cup when the draw for the Fourth Round is made on Monday, for of all the matches we have played against Leeds in the top division we have never yet been beaten. At Elland Road we have won twice and drawn twice in our four encounters,

while at home all four matches have been drawn. It should therefore be quite an interesting Cup struggle.

After the sensational goal-spree of our Boxing Day fixture our first match in 1959 was something of an anti-climax with a 'morning after - the night - before' look about it. The visit of Birmingham City was, on paper, one of the 'easier' home fixtures, for it was at St. Andrews earlier in the season that we gained our only away victory. But the 'double' was not to be.

Once again it was the lack of punch from the forward line which let us down. We began by looking complete masters of the situation but a long shot by left half Neal put Birmingham ahead after only four minutes in what was their first attack. We never really recovered from this early blow. On top of this a further stab was yet another missed penalty. To find a marksman as a penalty taker seems to have eluded us, for past "penalty-king" Gordon Turner is now so sadly amiss from the spot that penalties are proving of no value to us. This is really a sorry state for every missed penalty is a blow to the confidence of any team. In our own case it has also meant goodbye to many valuable points — something we cannot afford.

While our first team were floundering in the mud here at Luton our Reserves were fighting through hail, snow and fog to beat Birmingham's Reserves by 3-2. This was a good win, for with Terry Kelly on first team duty and full back McNally on the injured list, it was again a very young side we fielded. Birmingham on the other hand, had such stars as centre forward Eddy Brown and expensive winger Hooper in their side, which makes our performance even more creditable. It must be noted that Tony Gregory scored from the penalty spot, and in fact this young man has been playing so well lately that he has been chosen for first team duty this afternoon.

Seamus Dunne's injured toe has not responded to treatment as was hoped and so Brendan McNally is given another chance of first team duty. He certainly did not let the side down at Highbury, and was most disappointed when an injury prevented him taking the field against Birmingham last Saturday. However he is all right again and so enables Bob Morton to move into the forward line, a position not new to him. What a wonderful Club man Bob is. Moved anywhere, never a grumble, and never a bad game. It was a toss up between Allan Brown and Gordon Turner as to who was to wear the number 8 shirt. In the end the choice went to Brown in view of his very good match against Arsenal here on Boxing Day in that position also the way he linked up with Billy Bingham. It is a try-out for more effectiveness in front of goal. If it does not succeed we are happy in the knowledge that we have the sharp-shooting Gordon Turner ready in the background to see how he would fit into this forward line.

How really ardent are you Luton soccer fans? The point of this is that should today's match end all-square the replay will be at Elland Road, Leeds, next Wednesday, under floodlights, kick-off 7 p.m. There is unfortunately no excursion train arranged due to the uncertain demand, but for the real fan this will be no obstacle. The trip can be made, but don't expect to catch the last bus home on your return! Leaving Luton (Midland Road) on the 12.5 p.m. train, Leeds is reached at 4.30 p.m. After the game you catch the 10.15 p.m. from Leeds (City) and reach Luton at 4.26 a.m. on Thursday! Replay tickets, 7/6 and 5/6 seats, will be on sale at the Club Offices after the game today.

Continued on inside of front cover

Luton Bobbers Stand Club

BEECH HILL PATH

Telephone: LUTON 2566

The winning number of the Penny-on-the-Ball Ticket will be announced over the loud speakers at the interval. The person holding the winning ticket can go to the rear of the Main Stand after the game and for 3d. purchase the ball from Mr. C. W. Gregory.

The ticket number for the ball on Saturday, 3rd January, 1959 (Birmingham City match) was 55827 and the supporter who had this number was :-

MR. S. CLAYTON,
34, The Avenue, Flitwick, Beds.

Join The Bobbers Stand Club

● 1/2 Per Year

● 21/- Life Member

Send Postal Order to:

MR. J. COLLIER, Hon. Treasurer, BEECH HILL PATH, LUTON

CLUB NOTES — continued

However, a win today will put us in the bag for the 4th Round draw on Monday. Should we have this luck and be drawn at home please await the official announcement regarding tickets which will be published in the local press as soon as possible. Applications which jump the gun just cannot be considered.

We have been informed by Bunty Coaches, Costins Limited and Messrs Seamarks Bros. that they are running coaches to Upton Park, on

Saturday, 17th January, when we play West Ham United. Bunty Coaches will leave The Square, Dunstable, at 12.15 p.m. Costins' Coaches will leave Dunstable Town Hall, at 12.15 p.m. and both will pick up at Alma Street, at 12.30 p.m. Seamarks' Coaches will leave Alma Street, at 12.30 p.m. Fares are 8/- return. Anyone interested please enquire at the respective offices.

Remember the step to Round 4 today is steep; so tune up those tonsils, lubricate your larynx and CHEER!

Charles Mares—the big shop with the wide
selection of better clothes
for lasting satisfaction—

Charles
Mares
LIMITED

George Street, Luton — and at St. Albans — Bedford — Bletchley — St. Neots

Brewmaster
brewed by **Flowers**



DAILY DELIVERIES
IN ALL DISTRICTS

**Randall
& Whiting**
Limited
1, Duke Street
LUTON

'Phone: LUTON 2991-2

Pasteurised :: T. T.
Channel Islands Farm
Bottled
Channel Islands
Sterilised
Cream :: Yoghourt

And at

98-100, LUTON ROAD
DUNSTABLE

Heads we Win

'Rons'
Gentlemen's
Hairdressers
and Stylists

6, MILL STREET
LUTON

6 CHAIRS
Fully Staffed by Experts

TELEPHONE: LUTON 1961
Appointments arranged

Hours: 8.15 a.m. to 6.30 p.m.
Weds.: 8.15 a.m. to 12.45 p.m.
Saturdays: 8 a.m. to 6 p.m.

LUTON TOWN

Shirts White
Knickers Black
Stockings Black with White Tops

2 **McNally**
Right Back
4 **Groves**
Right Half
7 **Bingham**
Outside Right
8 **Brown**
Inside Right

Referee:

Mr. R. J. LEAFE
(Nottingham)

11 **Overfield**
Outside Left
6 **Gibson**
Left Half
10 **Revie**
Inside Left
3 **Hair**
Left Back

LEEDS UNITED

Shirts Blue and Old Gold
Knickers White
Stockings Old Gold and Blue Rings

Spectators are asked NOT TO CROSS THE PLAYING FIELD after the match

Baynham
Goal

5 **Owen**
Centre Half

9 **Morton**
Centre



9 **Shackleton**
Centre

5 **Charlton**
Centre Half

Wood
Goal

F.A. Cup — Round 3

3 **Hawkes, K.**
Left Back

6 **Pacey**
Left Half

10 **Cummins**
Inside Left

11 **Gregory**
Outside Left

Linesmen:

Red Flag:

Mr. G. A. Smoker (London)

Orange Flag:

Mr. S. Fautley (Romford)

8 **Crowe**
Inside Right

7 **Humphries**
Outside Right

4 **Cush**
Right Half

2 **Ashall**
Right Back

Kick-off 2.15 p.m.

Make the **MOST** of the
**NEW CREDIT
FACILITIES**

at

Scriven's

for

**ALL THINGS
ELECTRICAL**



H. F. Scriven
LIMITED

33-37, High Town Rd., LUTON
Telephone: Luton 5517-8

27-28, Sun Street, HITCHIN
Telephone: Hitchin 4756

93, High Street, STEVENAGE
Telephone: Stevenage 1847

**HARRY CANHAM
& Son**

Export Packers
Export Leatherboard Post Boxes
Cardboard Box, Packing Case
Ply Box and Crate Manufacturers
GROVE ROAD, LUTON

Telephone:
LUTON 458

**W. Chamberlain
& CO., (LUTON) LTD.**

General Hardware Merchants

VALSPAR Lacquer and Flat Wall Paint
MEREDITH'S

Celebrated Merlac Paint, Stains and Varnishes
SISSON'S PARIPAN

Siscolin Distemper: Enamels and Water Paint

Wallpapers and Borders etc.

ALL GARDEN REQUISITES

106, Dunstable Road, Luton

Telephone 329

Enquiries Invited

HOW WELL CAN YOU SAVE?

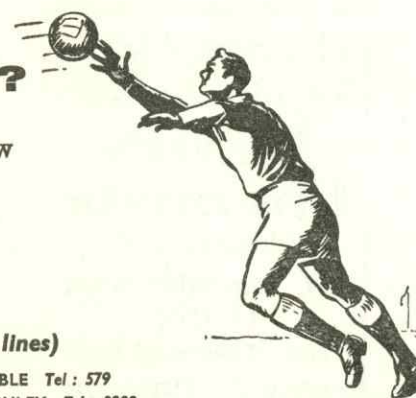
Open an account with us and watch your savings grow

**BEDFORDSHIRE
BUILDING SOCIETY**

Chief Office: 77-83 Harpur Street, Bedford. Tel: 66327 (3 lines)

16 KING STREET, LUTON Tel: 4577 • 38 HIGH STREET NORTH, DUNSTABLE Tel: 579

32 VICTORIA STREET, ST. ALBANS Tel: 54595 • 109 BLETCHLEY ROAD, BLETCHLEY Tel: 2288



**HELEY'S
RESTAURANT**

MILL STREET

NEXT TO GAUMONT CINEMA

**SPECIAL FISH and CHIP
DINNERS and TEAS**

SERVED ON MATCH DAYS

Seating Accommodation: 90

'Phone: Luton 3730 Proprietor: R. A. Heley

For all
HEATING
and
VENTILATING

District Heat and Engineering Co.

(The Industrial Division of
Frank Moody & Co.
(Engineers) Ltd.)

56, CHAPEL STREET
LUTON, Beds.

Telephone : Luton 374

Warden Tavern

2½ miles out of Luton
on main Bedford Road
Proprietor - Tom Hodgson
Ex-Captain, Luton Town F.C.



Telephone: ICKNIELD 277
Wedding Receptions
Luncheons, Social Functions
Evening Parties
Fully Licenced Large Car Park

PRINTING

Commercial Printing
Tickets and
Programmes

E. A. Allen & Son
(Luton) Limited

424, Dunstable Rd., Luton
Telephone: Luton 1626

Envelopes, Notepaper
Account Books
Rubber Stamps

STATIONERY

Today's Half-Time Scores

NOTE. The letter in the Programme corresponds with the letter on the Board—thus A 0-1 means that the first named club has scored 0 and their opponents 1.

FIRST LIST

F.A. CUP—Round 3

A	Accrington	Darlington
B	Aston Villa	Rotherham U.
C	Barrow	Wolverh'pton
D	Blackburn R.	Leyton O.
E	Brentford	Barnsley
F	Brighton & H.	Bradford City
G	Bristol Rov.	Charlton Ath.
H	Bury	Arsenal
K	Colchester U.	Chesterfield
L	Derby County	Preston N.E.
M	Doncaster R.	Bristol City
N	Everton	Sunderland

SECOND LIST

A	Fulham	Peterborough
B	Grimsby T.	Manchester C.
C	Ipswich Town	Huddersfield
D	Leicester City	Lincoln City
E	Middlesbro'	Birmingham
F	Newcastle U.	Chelsea
G	Newport Co.	Torquay Utd.
H	Norwich City	Manchester U.
K	Plymouth A.	Cardiff City
L	Portsmouth	Swansea T.
M	Scunthorpe U.	Bolton Wan.
N	Sheffield Utd.	Crystal Palace

THIRD LIST

A	Sheffield Wed.	West Brom.
B	Southampton	Blackpool
C	Stockport Co.	Burnley
D	Stoke City	Oldham Ath.
E	Tooting	Notts. Forest
F	Tottenham H.	West Ham U.
G	Worcester	Liverpool

LEAGUE MATCHES

H	Hull City	Southend Utd.
K	Notts. County	Reading
L	Swindon T.	Bournemouth
M	Wrexham	Q. P. R.
N	Aldershot	Crewe Alex.

BUNTY COACHES

Football Excursion
SAT., 17th JANUARY
West Ham Utd.

v. LUTON TOWN

Depart Square Duns. 12.15 p.m.

Alma Street 12.30 p.m.

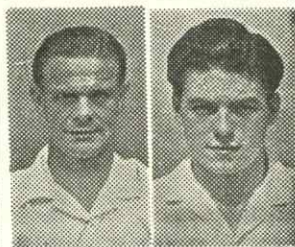
FARE 8/- FARE

Travel House

21, Leagrave Rd., Luton

Tele.: 5855/6

202, High Street South
Dunstable Tel. 100



WALLY GORDON
SHANKS TURNER

Sports Outfitters
109 - 111, Bury Park Rd.
LUTON Phone 7634
and
20, West St., Dunstable
Phone 1533
Suppliers to Luton Town F.C.
Club Secretaries
Especially Welcome

For ALL your
Pharmaceutical
Toilet and
Photographic
Requirements
REIDS
Chemists
(Luton) Ltd.
169, Dunstable Road
LUTON
(Corner of Kenilworth Road)
PHONE - - LUTON 760

DIVISION I and FOOTBALL COMBINATION FIXTURES :: 1958 - 1959

1958	FIRST XI—Division 1	Attendance	1957/8	F	A
Aug. 23 Sat.	West Brom.	24425	5 1	H	1 1
" 26 Tues.	Leeds United	25498	2 0	A	1 1
" 30 Sat.	Birmingham City	32000	1 1	A	1 0
Sept. 3 Wed.	Leeds United	13497	1 1	H	1 1
" 6 Sat.	West Ham Utd.	25715	...	H	4 1
" 10 Wed.	Manchester City	30771	2 2	A	1 1
" 13 Sat.	Bolton Wand.	19699	1 0	H	0 0
" 17 Wed.	Manchester City	18160	1 2	H	5 1
" 20 Sat.	Burnley	23760	2 1	A	2 2
" 27 "	Preston N. End	23056	1 3	H	4 1
Oct. 4 "	Leicester City	32017	1 4	A	1 3
" 11 "	Nottingham Forest	30187	0 1	A	1 3
" 18 "	Chelsea	24864	0 2	H	2 1
" 25 "	Portsmouth	24831	0 5	A	2 2
Nov. 1 "	Aston Villa	18714	3 0	H	2 1
" 8 "	Newcastle United	53420	2 3	A	0 1
" 15 "	Tottenham H. (1)	23592	0 0	H	1 2
" 22 "	Manchester United	41195	0 3	A	1 2
" 29 "	Wolves	20648	3 1	H	0 1
Dec. 6 "	Blackpool (2)	14140	2 1	A	0 3
" 13 "	Blackburn Rov.	13475	...	H	1 1
" 26 Fri.	Arsenal	21870	4 0	H	6 3
" 27 Sat.	Arsenal	56501	0 2	A	0 1
1959					
Jan. 3 Sat.	Birmingham C.	...	3 0	H	0 1
" 10 "	Leeds United	F.A. Cup-3	...	H	...
" 17 "	West Ham United	A	...
" 24 "	F.A. Cup-4
" 31 "	Bolton Wanderers	...	2 1	A	...
Feb. 7 "	Burnley	...	3 2	H	...
" 14 "	Preston N. End (5)	...	0 1	A	...
" 21 "	Leicester City	...	2 1	H	...
" 28 "	Notts. Forest (6)	...	3 1	H	...
March 7 "	Chelsea	...	3 1	A	...
" 14 "	Portsmouth (S.F.)	...	2 1	H	...
" 21 "	Aston Villa	...	0 2	A	...
" 27 Fri.	Everton	...	0 1	H	...
" 28 Sat.	Newcastle U.	...	0 3	H	...
" 30 Mon.	Everton	...	2 0	A	...
April 4 Sat.	Tottenham H.	...	1 3	A	...
" 11 "	Manchester Utd.	...	2 2	H	...
" 18 "	Wolves	...	1 1	A	...
" 20 Mon.	Blackburn Rov.	A	...
" 25 Sat.	Blackpool	...	2 0	H	...
To be arranged West Brom. Albion					2 4 A

Fixtures copyright of The Football League Ltd., and reproduced by their permission under Licence No. 2.

League Table 1958/59

DIVISION ONE

Up to and including Saturday, 3rd January, 1959

	P.	W.	D.	L.	F.	A.	Pts.
Wolverhampton W.	25	15	2	8	55	30	32
Arsenal	26	14	3	9	61	43	31
Manchester United	26	13	5	8	60	45	31
Bolton Wand.	25	12	7	6	46	36	31
Preston North End	26	13	4	9	46	41	30
West Bromwich	24	11	7	6	55	36	29
Nottingham Forest	25	13	3	9	47	32	29
Blackpool	25	9	10	6	37	29	28
Blackburn Rov.	25	10	7	8	52	43	27
West Ham United	25	12	3	10	52	45	27
Burnley	25	10	6	9	47	43	26
Newcastle Utd.	25	11	2	12	48	47	24
Birmingham C.	25	10	4	11	42	47	24
Chelsea	25	11	1	13	48	59	23
LEEDS UNITED	25	8	7	10	34	43	23
Everton	25	10	3	12	43	57	23
LUTON TOWN	24	7	8	9	37	34	22
Leicester City	25	7	6	12	43	61	20
Manchester City	25	7	6	12	41	59	20
Tottenham H.	25	7	5	13	47	60	19
Portsmouth	25	6	5	14	40	63	17
Aston Villa	26	6	4	16	37	65	16

NEXT MATCH

Saturday, 17th January, 1959

FOOTBALL COMBINATION

Luton Town Reserves
v.

West Ham Utd.

RESERVES

Kick-Off 2.30 p.m.

PRICES OF ADMISSION:

Centre Stand 2/- Wing Stand 1/6

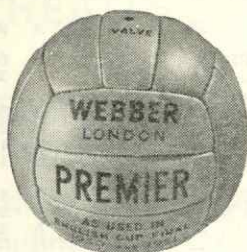
Enclosure 1/6, Boys 1/-

Bobbers Stand 1/3, Boys 10d.

Terraces 1/-, Boys 9d.

THE NOTED SPORTS SHOPS

FOOTBALLS IN GREAT VARIETY



Thomlinson's "Improved T" and "Match"
Stuart Surridge "Double Crown" and
"Straight Eighteen"

Minerva "Supreme" and "Standard"
Slazenger "Zig-Zag" and "Victory"
Mitre "Max" and "Tom Finney"

and

Webber's full range — "Supreme,"
"Premier," "Stalwart" and "Comet"

Hundreds of pairs of Football Boots in Stock



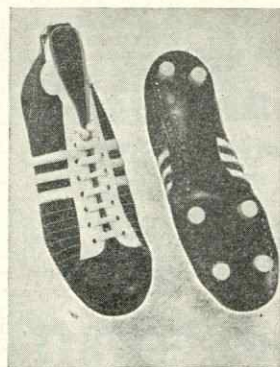
Arthur Rowe
"Streamline" - "Slimline"
"Sleekline"
"Convertible" - "Snugline"
and "Danny Blanchflower"

Tom Finney
"Featherweight" and
"Continental"

Lancaster "World Cup"
Manfield "Continental"

plus

all the English style boots



and introducing the
Adidas German Boots
as worn by the
German World Cup
Winning Team

Also

in stock the new
German "Puma" Boots
Various patterns in stock

Boys' Boots from 14/6 (English style) and 23/6 (Continental style)

G. A. WILD & SONS

The Sports and Leather Goods Specialists : Established a Century

14, Manchester St. 9a, Wellington St.

Telephone: Luton 780

LUTON

Telephone: Luton 1842

41, High Street North, Dunstable TELEPHONE: DUNSTABLE 275

UMBRO, BUKTA, UWIN & LITESOME SPORTSWEAR

Shirts, Jerseys, Continental Jerseys (as worn by the "Town"),
Knicks, Stockings, Goalkeepers' Sweaters — all in stock

REFEREES' OUTFITS — blouses, shirts, shorts, hose and whistles

We hold stocks of

Goal Posts, Goal Nets, Back Tubes, Football Inflators, Lacing Awls,
Lace Tighteners, Push Awls, Bladders, Ball Carrying Nets, Dubbin,
Boot Laces — 90", Leather and Rubber Studs

Shirt and Blazer Badges a speciality

RUGBY AND HOCKEY EQUIPMENT IN GREAT VARIETY

ALL INDOOR GAMES — The finest selection of Darts in the County

Our Representative will be pleased to call at your Club's
headquarters at any time of the day to show you samples

Suppliers to the
LUTON TOWN F.C.

See our
New Super Shop
at
41
HIGH ST. NORTH
DUNSTABLE