

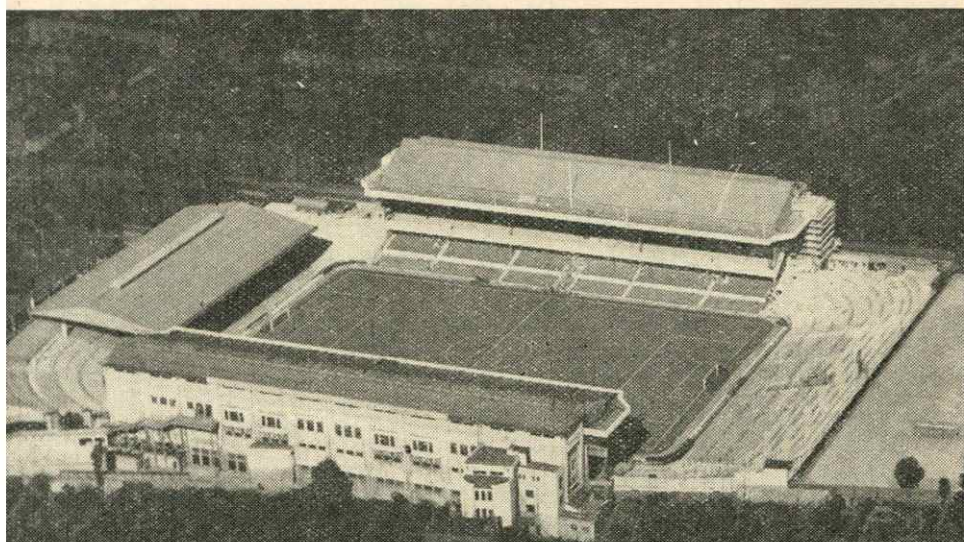
F.A. Cup Winners  
1930, 1936, 1950.



League Champions  
1931, 1933, 1934, 1935,  
1938, 1948, 1953

# Arsenal

## FOOTBALL CLUB



**Season 1958-9**

Football League Division I

Saturday, 27th December

**ARSENAL v. LUTON TOWN**

KICK-OFF 3 p.m. (Part Floodlight)

OFFICIAL

**6<sup>d</sup>**

PROGRAMME



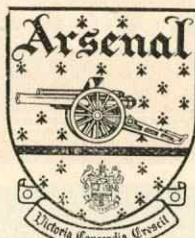
# ARSENAL FOOTBALL CLUB LIMITED

*Directors*  
SIR BRACEWELL SMITH, BART., K.C.V.O.  
(Chairman)  
COMMANDER A. F. BONE, R.D., R.N.R., RETD.  
J. W. JOYCE, ESQ.  
D. J. C. H. HILL-WOOD, ESQ.  
G. BRACEWELL SMITH, ESQ., M.B.E., E.A.  
*Secretary*  
W. R. WALL.  
*Manager*  
G. H. SWINDIN



LEAGUE CHAMPIONS  
1931, 1933, 1934,  
1935, 1938, 1948,  
1953

Colours—Shirts: Red, White  
Sleeves & Collars, Knickers:  
White. Stockings: Blue,  
White rings, White tops.



F.A. CUP WINNERS  
1930, 1936, 1950  
ARSENAL STADIUM,  
HIGHBURY, N.5

Grams:—  
GUNNERETIC,  
FINS PARK, LONDON

Vol. XL. No. 15

Saturday, 27th December, 1958

## Voice of Arsenal

INEVITABLY, these notes are written before our match at Luton yesterday, but not before our third successive defeat at home. How can it be that after having won so many of the most impressive home records in the country, we should suddenly lose three matches off the reel. Injuries, yes, to an extent, but we cannot possibly cry injuries for our defeat against Preston although we were still not at full strength. A good many words have no doubt been uttered by our followers, and indeed by the football public throughout the country, about this sudden decline at home. Our own summing up of the defeat at the hands of Preston is as follows:—

- (1) Our failure to go and meet the ball;
- (2) Our failure to get into the tackle quick enough when the opposition had the ball;
- (3) Our lack of finishing giving the impression of a far too casual approach, which has, perhaps,

stemmed from a sense of false confidence after a run of successes;

- (4) The brilliant goal-keeping of the young Preston player.

Whether or not our players have learned the many lessons from this match may have already shewn itself against Luton Town yesterday; we sincerely hope it has. What is of paramount importance is that we were well conscious of the shortcomings and will do all in our power to put them right . . . immediately! Football is so simple that all one has to do it to put the ball in the back of the net! It is only when the ball is there that the marks are awarded. They are not awarded for brilliant mid-field play. It is with this in mind that we shall have to put more punch into our attack in an effort to regain our position in the League, and to hope for a good run in the Cup which might take us to Wembley. Bury, of course, may have other ideas, and in no way do we minimise the size of the task up there. We wish you and our players "A Happy New Year."

## The Cup

With the turn of the year so nigh at hand our thoughts inevitably turn to our Cup-tie at Bury on 10th January. There was a time when it was a household joke that Arsenal were always drawn at home in the Cup. A famous sports cartoonist once portrayed a railway porter with a long beard saying to a youngster "I can remember the day when Arsenal played away from home in a Cup-tie." This, of course, emanated from the season when we actually won the Cup without playing a single match outside London. But things like this have a habit of averaging themselves out as statisticians say will always happen under the law of averages. Since the match at Bury is our fifth consecutive away draw it seems that the statisticians are right. From the full records of our cup-ties since the war (shown in next column), it will be seen that our only tie last season was at Northampton. In the previous season, although we managed to force two replays we were drawn at Newport, Preston and West Bromwich, after a home tie with Stoke.

## A Record

Bury, incidentally, still hold a record in Cup Finals which is likely to stand for some considerable time. In 1903 they beat Derby County at Crystal Palace by six goals to nothing and this remains the biggest win in the history of cup football. In fact no club since then has scored as many as five in the Final. Furthermore, a Cup-tie with Bury is no new venture for us although we are breaking new ground by visiting them for a Cup match. They were at Highbury in the 1952-53 season, a year in which we seemed to be heading in the right direction for Wembley. We beat Doncaster, Bury and Burnley before meeting Blackpool at Highbury in the 6th round. That day will long be remembered for Arsenal's black and white vertical striped shirts, for a broken leg sustained by Alan Brown, subsequently a Luton player, and for a Blackpool win.

## Celebrated

Blackpool celebrated by going to Wembley and winning a Cup Medal for Stanley Matthews in one of the most dramatic Wembley finals of all time. The following is our Cup history since the war—Two Finals (One successful), three times defeated in the 6th round; once in the 5th round; three times in the 4th round and four times defeated in the 3rd round.

1945-46				
Round	West Ham	United	(a)	0-6
3rd	West Ham	United	(h)	1-0
1946-47				
3rd	Chelsea		(a)	1-1
3rd	Chelsea		(h)	1-1
3rd	Chelsea (at White Hart Lane)			0-2
1947-48				
3rd	Bradford		(h)	0-1
1948-49				
3rd	Tottenham		(h)	3-0
4th	Derby County		(a)	0-1
1949-50				
3rd	Sheffield Wednesday		(h)	1-0
4th	Swansea Town		(h)	2-1
5th	Burnley		(h)	2-0
6th	Leeds United		(h)	1-0
s.-f.	Chelsea (at Tottenham)			2-2
s.-f.	Chelsea (at Tottenham)			1-0
Final	LIVERPOOL (at Wembley)			2-0
CUP WON.				
1950-51				
3rd	Carlisle United		(h)	0-0
3rd	Carlisle United		(a)	4-1
4th	Northampton		(h)	3-2
5th	Manchester United		(a)	0-1
1951-52				
3rd	Norwich City		(a)	5-0
4th	Barnsley		(h)	4-0
5th	Leyton Orient		(a)	3-0
6th	Luton Town		(a)	3-2
s.-f.	Chelsea (at Tottenham)			1-1
s.-f.	Chelsea (at Tottenham)			3-0
Final	NEWCASTLE UTD. (at Wembley)			0-1
1952-53				
3rd	Doncaster Rovers		(h)	4-0
4th	Bury		(h)	6-2
5th	Burnley		(a)	2-0
6th	Blackpool		(h)	1-2
1953-54				
3rd	Aston Villa		(h)	5-1
4th	Norwich City		(h)	1-2
1954-55				
3rd	Cardiff City		(h)	1-0
4th	Wolverhampton Wanderers		(a)	0-1
1955-56				
3rd	Bedford Town		(h)	2-2
3rd	Bedford Town		(a)	2-1
4th	Aston Villa		(h)	4-1
5th	Charlton Athletic		(a)	2-0
6th	Birmingham City		(h)	1-3
1956-57				
3rd	Stoke City		(h)	4-2
4th	Newport County		(a)	2-0
5th	Preston North End		(a)	3-3
5th	Preston North End		(h)	2-1
6th	West Bromwich Albion		(a)	2-2
6th	West Bromwich Albion		(h)	1-2
1957-58				
3rd	Northampton Town		(a)	1-3

## Our Visitors

Luton Town, our visitors today were one of the first clubs in the South of England to employ professionals. The club was founded in 1885 by the amalgamation of Luton Wanderers and Luton Excelsior. The professional element crept in at Luton when in 1890 an offer of five shillings a week was made to three local players—Frank and Harry Whitby and a player named Read. At the end of that season it was decided to pay the whole of the first team half a crown a week with an extra



half a crown for away matches and payment for working time lost before twelve noon on Saturdays. The following season the wages of the local players was doubled, and Julian, a half-back, was secured from Arsenal.

The Luton colours from time to time would be a credit to any self-respecting rainbow! On the formation the club colours were navy blue and pink halves. In 1889 the colours were changed to cochineal and to sky blue the following season. The present white shirts and black shorts were adopted when Luton were admitted to the Football League. There is little doubt that the match which will stand out most in the memory of both Luton and Arsenal supporters was our Cup-tie at Kenilworth Road in the 1951-52 season, when we finally won our way to Wembley for the historic match with Newcastle, when we battled for most of the Final with only ten men after a severe injury to Walley Barnes.

We had previously beaten Norwich, Barnsley and Leyton Orient without giving away a single goal and scoring no less than twelve goals in these three matches. Then to Luton and to a half-time score of Luton 1 Arsenal 0. Moore had put Luton ahead after only nine minutes and, moreover, Luton had unquestionably looked the better side; their supporters had good reason to look forward to the second half with greater confidence than could those of Arsenal. Tom Whittaker, however, made a major switch for the second half. Milton went to outside-right, Goring to inside-right Roper to centre-forward, and Cox to outside-left, only Lishman remaining in his normal position. After a quarter of an hour Arsenal were level. Don Roper made the opening and Freddie Cox scored from a seemingly impossible angle. Cox repeated

the dose to give us the lead and Milton then made it three. Still Arsenal were not altogether out of the wood for Mitchell scored for Luton from a penalty. The remaining fifteen minutes are not likely to be forgotten by any one of the spectators on the ground, and it was incidentally, a record gate. It was a dream match for Cox who had scored two goals himself and provided Milton with the pass from which he scored the third. The Arsenal team on that occasion was Swindin; Barnes, Smith, L.; Shaw, Daniel, Mercer; Cox, Milton, Goring, Lishman, Roper. Four of this side are at present club Managers.

We have not played many matches against each other but here are the details of those which have taken place:

Division II				
	Home	Away		
1897-98	2-1	1-3		
1898-99	3-0	1-4		
1899-1900	5-1	0-3		

Division I				
	Home	Away		
1955-56	3-0	0-0		
1956-57	1-3	2-1		
1957-58	2-0	0-4		

Arsenal's score shown first.

Summary of League Encounters										
	P	W	D	L	F	A	Pts.			
Home	6	5	0	1	16	5	10			
Away	6	1	1	4	4	15	3			
	12	6	1	5	20	20	13			

F.A. Challenge Cup

1901-02—1st Sup. Round: Arsenal won 2-0 (after a 1-1 draw).  
1923-24—First Round: Arsenal won 4-1.  
1933-34—Third Round: Arsenal won 1-0.  
1951-52—Sixth Round: Arsenal won 3-2.

## DO YOU KNOW?

- Who had the unique experience of managing two clubs in nine days at a time when each in turn was at the bottom of the same Football League division?
  - What was the longest unbeaten sequence from the start of a season to have been achieved during this century by a Football League team?
  - Which was the last time a club included as many as three amateurs in its team in a First Division match?
  - A player's complete Football League career was restricted to three matches, yet he appeared with two clubs in the same city and scored for both! Who was he?
  - Which was the highest number of consecutive Football League matches from the start of a season in which a team prevented a goal concession?
  - What ranks as the post-war record for the highest number of goals disallowed in a Football League match?
- The answers to these questions are given on page eleven.

## PROGRAMME OF MUSIC

The following items of music will be included in the programmes of music to be played by the Metropolitan Police Band, conducted by Mr. Roger Barsotti, A.R.C.M., Director of Music.

MARCH	"Royal Command "	John Howlett	Two PIECES (a) "18th Century Drawing Room "	Scott	
SELECTION	"The King and I "	Rodgers			
SELECTION	"Robert Farnon Melodies "		(b) "Begorrah "	Ray Martin	
		arr. Duthoit			
WALSE	"Moonlight on the Alster "	Fetras	SELECTION	"Festivalia "	arr. Winter
SELECTION	"Chu Chin Chow "	Norton	MARCH	"Colonel and Commodore "	Barsotti

All engagements are by permission of the Commissioner of Police of the Metropolis, and subject to the exigences of the service.

## Summary of Football League appearances for all players now on the Arsenal Staff up to 1957-58 Season

	1949-50	1950-51	1951-52	1952-53	1953-54	1954-55	1955-56	1956-57	1957-58	Total Ap'nces
H. GORING	29	34	16	29	9	41	37	13	10	218
D. BOWEN	—	7	8	2	10	21	22	30	30	130
A. J. KELSEY	—	4	—	25	39	38	32	30	38	206
W. DODGIN	—	—	—	1	39	3	15	41	23	122
L. E. WILLS	—	—	—	—	30	24	15	18	18	105
D. J. EVANS	—	—	—	—	10	21	42	40	32	145
G. WARD	—	—	—	—	3	—	—	—	10	13
C. H. SULLIVAN	—	—	—	—	1	2	10	12	3	28
J. FOTHERINGHAM	—	—	—	—	—	27	25	—	19	71
J. BLOOMFIELD	—	—	—	—	—	19	32	42	40	133
D. R. CLAPTON	—	—	—	—	—	16	39	39	28	122
J. HAVERTY	—	—	—	—	—	6	8	28	15	57
D. G. HERD	—	—	—	—	—	3	5	22	39	69
S. CHARLTON	—	—	—	—	—	—	19	40	36	95
V. G. GROVES	—	—	—	—	—	—	15	5	30	50
G. E. NUTT	—	—	—	—	—	—	8	1	21	30
J. BARNWELL	—	—	—	—	—	—	—	1	—	1
J. W. F. J. PETTS	—	—	—	—	—	—	—	—	9	9
A. BIGGS	—	—	—	—	—	—	—	—	2	2
J. A. STANDEN	—	—	—	—	—	—	—	—	1	1
T. DOCHERTY	—	—	—	—	—	—	—	—	—	—
J. HENDERSON	—	—	—	—	—	—	—	—	—	—

### The matches with Luton last season

Saturday, 31st August, at Highbury  
ARSENAL 2 LUTON TOWN 0  
Arsenal: Kelsey; Charlton, Wills; Holton, Fotheringham, Bowen; Clapton, Herd, Groves, Bloomfield, Haverty.  
Goalscorers: Groves, Holton.  
Luton: Baynham; Dunne, Jones; Morton, Owen, Pearce; Cullen, Turner, Groves, Brown, Adam.  
Referee: Mr. P. G. Brandwood (Kidderminster).

Saturday, 28th December, at Luton  
LUTON TOWN 4 ARSENAL 0  
Luton Town: Baynham; Dunne, Hawkes; Morton, Owen, Pearce; Adam, Turner, Brown, Groves, McLeod.  
Goalscorers: Brown 3, Groves.  
Arsenal: Kelsey; Charlton, Evans; Holton, Dodgin, Goring; Le Roux, Herd, Groves, Bloomfield, Nutt.  
Referee: Mr. G. McCabe (Sheffield).

## NEXT MATCHES AT THIS STADIUM

FOOTBALL COMBINATION

**Tottenham Hotspur**

Saturday, 3rd January

Kick-off 3 p.m.

FOOTBALL LEAGUE

**Everton**

Saturday, 17th January

Kick-off 3 p.m.

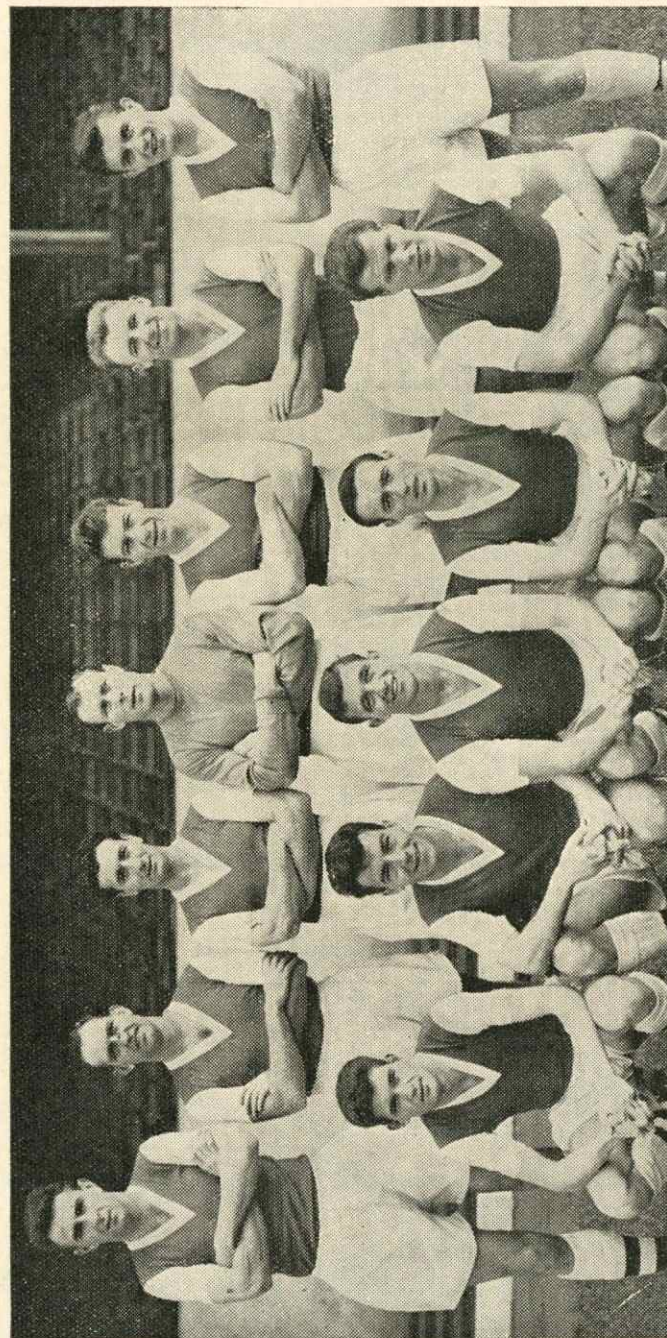
THIS STADIUM NOW ACCOMMODATES 50,000 UNDER COVER



## THE PLAYING STAFF OF 37 PROFESSIONALS

Name	Position	Previous Club	Height	Weight	Signed	Birthplace
*Barnwell, J.	IF	Bishop Auckland	5 8	11 0	28 11 56	High Heaton
Bennett, D.	FB	Ground Staff	5 9	11 5	29 8 51	Wakefield
Biggs, A.	CF	Arsenal Amateur	6 0	12 7	2 8 56	Greenford
Bloomfield, J.	IF	Brentford	5 9	10 5	16 7 54	London
Bowen, D.	WHB	Northampton T.	5 10	11 7	26 7 50	Maesteg, S.Wales
Charlton, S.	FB	Leyton O.	5 11	12 0	4 11 55	Exeter
Clapton, D. P.	CF	Arsenal Amateur	6 0	11 0	1 8 58	London
Clapton, D. R.	OR	Arsenal Amateur	5 9	10 8	15 8 53	London
Coe, N. C.	G	Ground Staff	5 8	10 0	6 8 58	Pentrechynth S.Wales
Cox, E. G.	FB	Ground Staff	6 0	12 11	11 9 52	Ramsgate
Davies, P.	WHB	Llanelly	5 9	11 0	8 11 57	Dafen, S.Wales
Docherty, T.	WHB	Preston North End	5 9	11 7	23 8 58	Glasgow
Dodgin, W.	CH	Fulham	6 2	12 4	4 12 52	Wardley
Dodson, D. A.	OL	Ground Staff	5 6	9 10	18 11 57	Gravesend
Evans, D. J.	FB	Ellesmere Port	5 11	12 0	3 1 51	Liverpool
Everitt, M. D.	OR	Ground Staff	5 7	10 0	5 2 58	Clacton
Fotheringham, J.	CH	Arsenal Amateur	6 3	14 2	29 3 51	Hamilton, Lanark
Goring, H.	WHB	Cheltenham T.	5 11	12 4	22 1 48	Bishops Cleeve
Goulden, R. L.		Ground Staff	5 9	10 0	22 9 54	Ilford
*Goy, P. J.	G	Ground Staff	6 0	11 1	15 6 55	Beverley
Groves, V. G.	IF	Leyton O.	5 11	12 7	4 11 55	London
Haverty, J.	OL	St. Patricks	5 3	9 10	19 7 54	Dublin
Henderson, J. G.	OL	Wolverhampton	5 9	11 10	3 10 58	Glasgow
Herd, D. G.	CF	Stockport Cnty.	6 0	11 13	24 8 54	Hamilton, Lanark
Kelsey, A. J.	G	Winch Wen	5 11	12 1	29 8 49	Llansanlet, S.Wales
Meldrum, C.	LH	Ground Staff	5 10	11 0	2 12 58	Glasgow
McCullough, W. J.	LB	Portadown	5 11	11 7	12 9 58	Woodburn, N.I.
Nicholas, K. W.	FB	Ground Staff	5 9	12 3	16 5 55	Northampton
Nutt, G. E.	OL	Cardiff City	5 8	10 0	23 9 55	Birmingham
*Petts, J. W. F. J.	WHB	Ground Staff	5 9	10 7	28 5 56	London
Sanchez, J.	FB	Ground Staff	5 6	10 0	21 10 57	London
Saxby, R. E.	OR	Arsenal Amateur	5 8	9 10	29 10 54	Rolvenden
Standen, J. A.	G	Arsenal Amateur	6 0	11 3	20 4 53	London
Strong, G. H.	CF	Stanley Utd.	6 0	11 4	14 4 58	Kirkheaton
Sullivan, C. H.	G	Bristol City	6 0	12 7	3 2 54	Bristol
Ward, G.	WHB	Ground Staff	5 8	11 0	5 10 53	London
Wills, L. E.	FB	Eton Manor	5 10	11 0	24 10 49	London

\*In H.M.F. on National Service.



ARSENAL FOOTBALL CLUB

Standing: W. Dodgin, D. Bowen, L. Wills, J. Kelsey, D. Evans, T. Docherty, G. Ward.  
Kneeling: D. Clapton, V. Groves, D. Herd, J. Bloomfield, J. Henderson.



## LUTON PLAYERS

**RON BAYNHAM** (Goalkeeper): This tall, well built player is one of the best 'keepers in the country. He first played for Worcester City and his great displays attracted the attention of many League clubs. He joined Luton in 1951 and in the 1952-53 season displaced their international goalkeeper, Bernard Streten. This proved only the start, for less than two years later Baynham had been capped for England in internationals against Denmark, Spain and Ireland.

**SEAMUS DUNNE** (Right-back): One of the three Eire internationals on Luton's books, Dunne has been an almost automatic choice for club and country for the past four seasons. He now holds 11 caps and played in the last match against Poland in October. A native of Wicklow, he arrived at Luton via the Irish League club, Shelbourne, in 1950 and made his league debut against West Ham on Boxing Day, 1951. A speedy player, who enjoys nothing better than the occasional foray upfield.

**KEN HAWKES** (Left-back): A player who has made considerable strides since returning to the club after National Service in 1953. Hard tackling and solid, he was spotted when playing for Shotton Colliery Welfare and made a big impression in subsequent trial games. Last season he made 22 first-team appearances sharing the left-back position with Les Jones, but is now first choice. Aged 25.

**BOB MORTON** (Right-half): Undoubtedly one of the strongest and most consistent wing-halves in the First Division. Indeed, there have been times when good judges have wondered why the England selectors have ignored his claims. He was named as reserve for the England-Russia match at Wembley this season. His chance may still come. A local product, Morton has been with the Town ever since his teens.

**TERRY KELLY** (Right-half): Another local, Kelly has never been a regular in the Luton first team, but on the occasions he has been called upon to deputise for either Morton or Owen, he has always given a good account of himself. Was a centre-half when signed from Vauxhall Motors. Is also a fine club cricketer, who has had trials for Bedfordshire.

**SID OWEN** (Centre-half): Luton's first team centre-half for many years now, Owen is the man tipped to take over as the club's manager at the end of the current season. An imposing figure on any soccer field, he has won many representative honours including full internationals against Hungary, Yugoslavia and Belgium in 1954 since joining the club from Birmingham City in 1947. Was originally a wing-half, but since his conversion into a centre-half has developed into one of the finest "stoppers" in the game.

**DAVE PACEY** (Left-half): When Owen retires at the end of the season, it is possible that Pacey will become his successor. He now occupies the left-half position, but according to Dally Duncan, the former Luton manager, is "a natural centre-half!" Pacey made his name with Hitchin Town and was still an amateur when he joined the forces. It was touch and go whether he became a professional with Arsenal or Luton, but as his father Jackie had been a professional with Luton, Dave turned down the

Highbury club. Gained a regular first team place when Pearce moved to Sunderland last season.

**JOHN GROVES** (Left-half or Inside-left): Originally an inside-forward, Groves has filled both centre-forward and wing-half positions with equal success since he joined Luton upon leaving school. This year his first team appearances have been very infrequent owing to the good form of Cummins and Pacey, but he may yet offer a stiff challenge to both players before the end of the season. Tall and fast, he distributes the ball accurately.

**BILLY BINGHAM** (Outside-right): Luton paid the biggest transfer fee in their history—over £15,000—to Sunderland for the transfer of Irish international Billy Bingham in July. Already he has repaid them with some brilliant performances. Now aged 27 he has the distinguished record of having played in some 36 internationals for Ireland, the last being against Spain in October. A fast, clever winger, his elusive body swerve has worried and disorganised the best defences.

**GORDON TURNER** (Inside-right): A free scoring forward, Turner last season obtained 30 goals—21 more than any other player in the side. Undoubtedly a match winner on his day, he has played for the Football League and been a reserve for the England "B" team. Has been tried in the centre, but is at his best at inside-forward. A difficult player to dispossess.

**ALLAN BROWN** (Centre and Inside-forward): A Scottish international with 14 caps to his credit, Brown was transferred from Blackpool to Luton for £14,000 in 1956-57 and immediately made an impact with his intelligent play. As far as Highbury is concerned he has always proved the proverbial "thorn in the side." He will always be remembered for that great goal which put Arsenal—and himself—out of the F.A. Cup in the sixth round in 1952-53. In scoring it he broke a leg and for the second time in three years had to miss the Final through injury. Began his League career with East Fife who received £25,000 from Blackpool for his transfer in 1950.

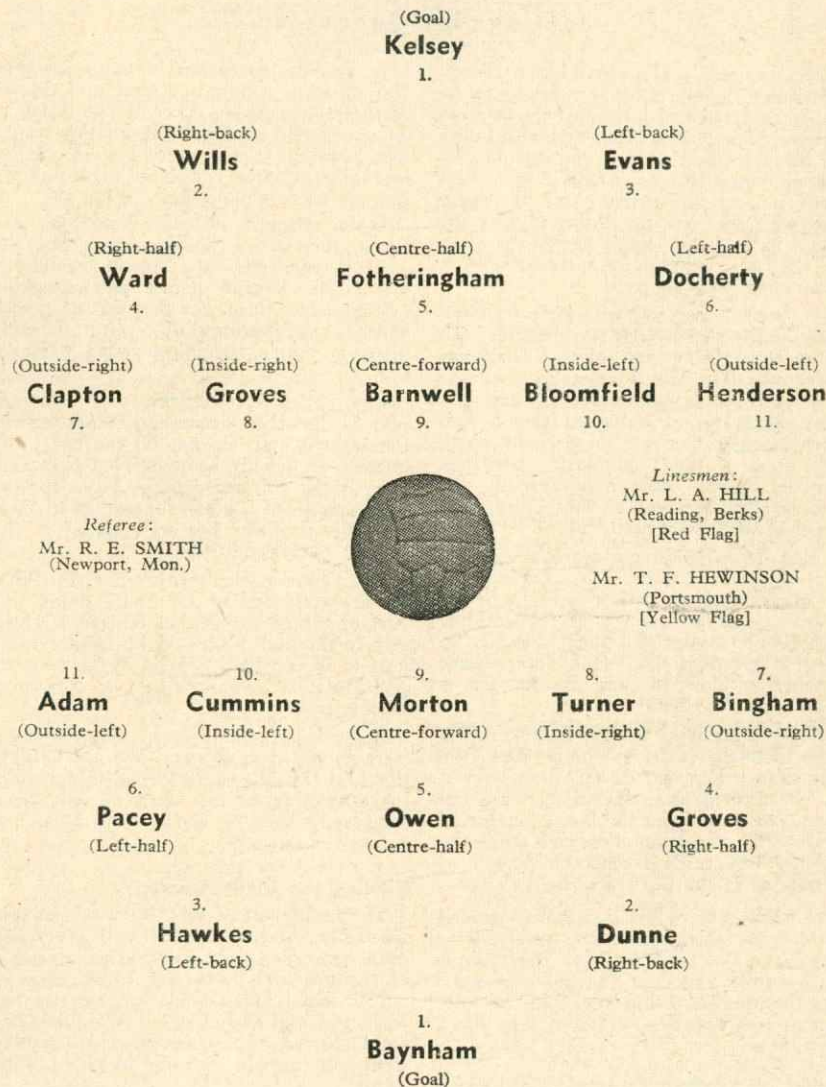
**GEORGE CUMMINS** (Inside-left): The third of Town's Eire internationals, Cummins joined Luton from Everton for a £12,000 fee in 1953. Since then he has won ten caps, the last being against Poland in October this year. In 1957-58 he made only 15 first team appearances, but this season has regained his old form and confidence and is a regular choice.

**JIM ADAM** (Outside-left): A Scot, he arrived at Luton via Spennymoor, the North Eastern League club, in 1953-54. He had been signed in the face of keen competition from several Scottish League clubs but he was not an immediate success. He has matured considerably and is now a firm favourite. Is a fast winger with a good centre.

**BRENDAN McNALLY** (Reserve Full-back): Has had to be content with only occasional appearances in the senior side, although a fortnight ago he was unexpectedly named as Luton's centre-forward for the home match with Blackburn Rovers. A native of Dublin, he joined Luton from Shelbourne, the Irish League club.

## ARSENAL

Colours—Shirts: Red, White Sleeves and Collars. Knickers: White. Stockings: Blue, White Rings, White Tops.



## LUTON TOWN

Colours—Shirts: White. Knickers: Black. Stockings: Black, White Tops.



# THE MYSTERY OF WHY GOOD TEAMS SUDDENLY TAKE THE WRONG TURNING

Jottings by Spectator

WE owe an apology to Luton Town, which is all the more likely to be readily accepted and forgiven because comparatively few people connected with Luton will be aware that such is due. In the programme notes for the recent Aston Villa match it was stated that Arsenal people knew what we were up against during the second half of the season because we had met all our League competitors except Birmingham City.

That wasn't correct, of which fact evidence is provided by the two matches with Luton Town being part of the Christmas programme. The one thing nobody wanted to do was to ignore Luton. I certainly didn't. How can we help admiring a club which is older than any of us, and which once upon a time voluntarily withdrew from the Second Division because the fixtures involved the club in more long journeys than they could really afford.

Luton Town holding a place among the elite—a credit to the First Division—is one of those things which have to be included among the wonders of the world of football. So we include them, heartily in seasonal greetings. May the future have even better things in store, making for us all a happy New Year.

At the moment of writing we don't even know what the position will be when the mid-season holiday games have been worked off. The returns around Christmas are important, of course, but the lesser number of fixtures this time round suggest that the tendency is towards a general reduction of the rations in the Christmas football feast.

When the fixture list was more crowded at this time of the year, the good advice often given was to this effect: Don't begin to take stock or count the chickens until after the turn out of one year into the next. To that was added:—and even then don't count them.

## Pitches of All Sorts

Pretty sound, that advice. Events so often run contrary to expectations. Everything seems to be going right when suddenly the wrong turning is taken. The slump sets in. We know that well enough, as do our friends from Luton.

At one period earlier in the season the Hatters were in proud possession of the top of the table position. Then things began to go wrong. Up to the middle of this month five games in a row were lost. A similar sort of story was connected with Luton's first season in the top class.

When the turn into the New Year was taken they were highly placed in the League table. Alas, the flop in results followed—six League games in succession going against them. For that sort of experience in the fortunes of a club there is often a simple, straight-forward explanation.

Key players are absent, and the team play is disturbed because the deputies for the injured stars do not fill the gaps adequately or quickly enough. That isn't necessarily the only reason. The First Division experiences of Luton suggest that their style of play was not well suited to the heavier pitch conditions.

I don't know whether that is right. What we are reminded of so often around this part of the season is that the clubs which stay in the high places of the League table have to be consistently good in fair weather and foul; on mud, in slush, or even on a skating rink.

Arsenal have had slump periods which were shrouded in mystery. We can be duly thankful that the same sort of thing works the other way round: when we have been reminded that the darkest hour is just before the dawn.

## Finding the Right Answer

The latter part of the 1926-7 season provided for Arsenal players and everybody else concerned an outstanding example of the ups and downs for which there is no obvious explanation. We were flying high, and well on the way to Wembley. But amid the run came a period when nothing went our way in relation to the League games.

Seven in a row were lost. Suddenly, however, and again without any obvious explanation, our players found the turning in the lane. The maximum points were picked up from three Easter holiday matches. Those successes put things right in the

League sense, making us much more confident about the outcome of our first Cup Final.

There is little need to worry about the why and wherefore of victories, but the almost unaccountable slumps mean a headache for everybody concerned. It may well happen that experiments have to be made in the make-up of the team.

During this season, after the Luton experience of losing five games in a row which have been mentioned previously, Brandon McNally, who up to then had been regarded as a full-back, was switched to the centre-forward position. Possibly somebody connected with the club remembered the extraordinary success which immediately followed a centre-forward experiment years ago.

That reference is, of course, to the outstanding record-making performance of Joe Payne. On the very first occasion on which he played at centre-forward in the first team he scored ten goals in a match against Bristol Rovers.

We at Highbury have reason to remember the sequel to what was called the gamble move of switching a full-back to the centre-forward position. The man concerned was Bob Turnbull. The move made a happy Christmas for Arsenal. Turnbull started with a goal at Bolton, and in the Boxing Day return match did the hat-trick. Doing the same thing again at Blackburn by way of a start to the New Year, he totted up to nine goals in just over a week.

## Two Rare Pippins

Sixty years have passed since Arsenal and Luton Town first met for League points. Connected with the returns are interesting figures. Three Second Division games were played on Arsenal's ground, and three on the Luton ground. The Reds won their home games, and the Hatters triumphed each time they were at home. The goals total for that little series was exactly the same—ten to the home teams and two to the visitors.

Quite soon after the games of this holiday period are over thoughts about the coming Cup-ties will be uppermost. While Arsenal are travelling to Lancashire for their third round game, the Luton fellows will be on their way to Yorkshire.

Leeds v. Luton is one of the three ties in the round in which First Division clubs clash. Another one is a bus ride from our ground—at White Hart Lane. That connects, in a way, with the last of the three occasions when Arsenal and Luton met in the competition proper.

The sixth round game at Luton in 1952 was one of the joy days for Freddie Cox. When Arsenal were a goal down Cox put the score level, somehow squeezing the ball in from what seemed an impossible angle. From a position only slightly more favourable he managed a second one, and Arsenal duly passed on towards Wembley.

Freddie wasn't quite sure himself whether he should have shot or passed, but he wouldn't stand for it when somebody suggested that he got through with two bad shots. "Don't you believe it," said Cox, "the shots which get the goals are the best."

## SOUTH-EAST COUNTIES LEAGUE

### Fixtures

1958	Opponents	Venue	F.A.
Aug. 23	WEST HAM UTD.	HOME	2 1
„ 30	Brentford	Away	4 0
Sept. 6	WATFORD	HOME	7 2
„ 13	Charlton Athletic	Away	2 2
„ 20	CHARLTON ATH.	HOME	5 0
„ 27	CHELSEA	HOME	1 0
Oct. 4	Portsmouth	Away	0 1
„ 18	Tottenham H.	Away	0 0
„ 25	Q.P.R.	HOME	1 1
Nov. 15	Leyton Orient	Away	6 0
„ 22	BRENTFORD	HOME	3 2
„ 29	West Ham	Away	3 1
Dec. 6	Bexleyheath	Away	1 2
„ 13	LUTON TOWN	HOME	7 1
„ 27	PORTSMOUTH	HOME	.....

## Here Are The Answers

To questions on Page 4.

- 1.—William Dodgin. He resigned the manager-ship of Fulham on September 22nd, 1953, when they were at the bottom of the Second Division. Nine days later he was appointed manager of Brentford, who had dropped to the bottom in the meantime.
- 2.—That of Liverpool when they won 10 and drew nine of their first 19 First Division matches in season 1949-50.
- 3.—That when Bernard Joy, Dr. Kevin O'Flanagan, and Albert Godmundsson all played for Arsenal against Stoke City at Highbury on October 19th, 1946.
- 4.—John Malcolm Padgett, who appeared with Bradford City in two Third North games in season 1937-38 and scored once. He spent the following season with Bradford, for whom he played in only one Second Division match, but scored.
- 5.—That when Portsmouth did not concede a goal in any of their first eight Third South matches in season 1922-23.
- 6.—That when six (all for offside) were disallowed in a Third South match between Swindon Town and Southend United in November, 1949.



# **APPEARANCES & GOALSCORERS**

Up to and including 20th December  
Goals scored are given in brackets after  
the number of appearances.

## **FOOTBALL LEAGUE**

Bloomfield	23 (6)	Henderson	9 (8)
Clapton	23 (4)	Barnwell	4 (1)
Dodgin	23	Charlton	4
Evans	23 (4)	Haverty	3
Kelsey	22	Holton	3 (3)
Docherty	21	Biggs	2 (1)
Ward	21 (3)	Bowen	2
Groves	19 (3)	Petts	2
Wills	19	Goring	1
Herd	14 (12)	Standen	1
Nutt	14 (6)		

## **FOOTBALL COMBINATION**

Fotheringham	17 (1)	Clapton (D. P.)	4
Standen	14	Jones	3 (2)
Goulden	13 (4)	Sanchez	3
McCullough	13	Strong	3 (1)
Charlton	12	Swallow	3 (3)
Goring	12 (1)	Tapscott	3 (1)
Barnwell	11 (2)	Wills	3
Haverty	11 (5)	Sullivan	2
Petts	11 (4)	Clayton	1 (1)
Tiddy	9 (2)	Coe	1
Biggs	8 (5)	Everitt	1
Dodson	6 (2)	Goy	1
Holton	6 (7)	Herd	1
Nutt	6	Nicholas	1
Bennett	5	Quinn	1
Bowen	5 (1)	Saxby	1
Davies	5 (1)	A. Young	1
		R. Drake	1

## **METROPOLITAN LEAGUE**

Saxby	17 (5)	M. Barber	2 (1)
A. Young	15	Barnwell	2
Clapton (D. P.)	14 (17)	W. Callaghan	2
Davies	14	Clayton	2 (1)
Dodson	13 (22)	E. ab Iorwerth	2
Everitt	13 (4)	I. McKechnie	2
J. Harris	11	J. Snedden	2
Goy	10	R. Capel	1
Sanchez	10	B. Croucher	1
Dixon	9 (3)	S. Cunningham	1
D. Bacuzzi	9	W. Emerson	1
Coe	9	F. Gillan	1
Nicholas	9 (2)	R. Glover	1
Strong	9 (13)	W. Meadows	1
Goulden	7 (2)	B. McGlynn	1
D. Heard	7	F. O'Neill	1 (2)
Bennett	5	Petts	1
Meldrum	5	Quinn	1
M. Fairchild	3	J. Read	1
D. Robson	3	Standen	1
		Swallow	1

## **SOUTH-EAST COUNTIES LEAGUE**

W. Meadows	13 (4)	I. Snedden	5
M. Barber	10 (10)	J. Harris	4
W. Belger	9 (4)	Coe	2
M. Brown	8	C. Edwards	2
Meldrum	8	M. Emerson	2
R. O'Dell	8	R. Agar	1
R. Reynolds	8 (4)	G. Cox	1
W. Callaghan	7 (9)	K. Davies	1
M. Fairchild	7 (2)	J. Dyke	1
R. Griffiths	7	Everitt	1 (1)
D. Heard	7 (2)	R. Gidney	1
R. Warman	7	D. Robson	1
J. Watson	7 (2)	Sanchez	1
R. Ansley	6 (2)	J. Sturley	1
J. Read	6	C. Vernon	1
D. Bacuzzi	5	B. Wilson	1
I. McKechnie	5 (1)		

# **FOOTBALL LEAGUE—DIVISION I**

Home							Away						
P	W	D	L	F	A		W	D	L	F	A	Pts	
22	8	1	2	29	13	Bolton	3	6	2	15	18	29	
22	8	1	2	26	8	Wolverhampton	5	1	5	16	17	28	
23	7	1	3	25	15	Preston N.E.	5	3	4	17	19	28	
21	4	3	3	21	17	West Brom. A.	6	4	1	31	15	27	
23	8	1	3	35	19	ARSENAL	4	2	5	19	16	27	
22	6	2	3	30	15	Blackburn	3	5	3	19	22	25	
23	5	3	3	27	17	Manchester Utd.	5	2	5	26	26	25	
22	4	7	0	15	6	Blackpool	3	3	5	14	18	24	
22	6	2	3	23	11	Nottm. Forest	4	1	6	17	20	23	
22	5	2	4	22	17	Burnley	4	2	5	18	21	22	
22	6	1	3	20	14	Newcastle Utd.	4	1	7	23	27	22	
22	7	1	3	32	17	West Ham Utd.	2	2	7	12	25	21	
22	3	6	2	14	13	Leeds United	4	1	6	17	25	21	
21	5	4	2	21	11	LUTON TOWN	1	4	5	10	18	20	
22	6	1	4	21	23	Birmingham	2	3	6	13	19	20	
22	8	0	3	32	20	Chelsea	1	1	9	11	36	19	
22	5	2	5	21	26	Everton	3	1	6	18	27	19	
22	5	4	3	26	20	Manchester City	1	2	7	10	30	18	
22	5	3	3	23	20	Leicester City	2	1	8	14	34	18	
22	4	1	5	24	21	Tottenham	2	4	6	18	32	17	
22	5	3	3	25	20	Portsmouth	1	2	8	12	30	17	
23	4	3	5	19	23	Aston Villa	2	1	8	16	36	16	

## **FOOTBALL COMBINATION—DIV. I**

	P.	W.	D.	L.	F.	A.	Pts.
Tottenham Hotspur	18	14	0	4	57	22	28
Leicester City	19	13	1	5	41	25	27
Nottingham Forest	17	11	1	5	37	26	23
Chelsea	18	10	2	6	47	31	22
ARSENAL	18	7	7	4	43	28	21
Birmingham City	17	10	1	6	29	21	21
Luton Town	18	8	4	6	36	35	20
Swansea Town	18	9	1	8	38	46	19
Portsmouth	17	7	4	6	36	33	18
Fulham	18	5	7	6	28	29	17
Ipswich Town	19	7	2	10	37	43	16
Brighton & Hove Albion	17	5	3	9	33	29	15
Charlton Athletic	18	6	2	10	33	38	14
Bristol City	17	6	2	9	25	40	14
Cardiff City	17	6	1	10	28	49	13
West Ham United	17	5	3	9	24	42	13
Leyton Orient	15	4	4	7	34	32	12
Bristol Rovers	18	2	1	15	27	64	5

## **METROPOLITAN LEAGUE**

	P.	W.	D.	L.	F.	A.	Pts.
ARSENAL	21	14	4	3	73	39	32
Chelsea	19	15	1	3	63	14	31
Tonbridge	17	12	4	1	58	33	28
Guildford City	19	11	2	6	43	42	24
Brighton & Hove Albion	17	7	5	5	32	31	19
Hastings United	17	8	2	7	35	25	18
Newbury Town	13	6	4	3	26	18	16
Dunstable Town	15	7	2	6	31	32	16
Didcot Town	15	4	7	4	22	20	15
West Ham United	16	7	1	8	32	31	15
Crawley Town	15	5	5	5	34	35	15
Eastbourne United	16	5	4	7	32	28	14
Headington United	18	5	4	9	30	50	14
Luton Town	16	5	3	8	35	32	13
Haywards Heath	14	4	5	5	24	27	13
Bedford Town	17	5	3	9	31	45	13
Fulham	20	4	3	13	32	47	11
Dartford	18	3	3	12	31	84	9
Portsmouth	9	3	1	5	20	21	7
Windsor & Eton	18	2	3	13	25	55	7



Standing: R. Morton, S. Dunne, K. Hawkes, R. Baynham, D. Pacey, S. Owen, J. Groves.  
Seated: W. Bingham, G. Turner, A. Brown, J. Adam.



## EVER PRESENT

After our match against Preston North End, our twenty-third of the present campaign, the following four players were the only ones to have played in every game.



JIMMY BLOOMFIELD



DANNY CLAPTON



BILL DODGIN



DENNIS EVANS

## Football League Division I

1958	Opponents	Venue	F.A.
Aug. 23	Preston North End ...	Away	1 2
" 26	BURNLEY ...	HOME	3 0
" 30	LEICESTER CITY ...	HOME	5 1
Sept. 2	Burnley ...	Away	1 3
" 6	Everton ...	Away	6 1
" 9	BOLTON W. ...	HOME	6 1
" 13	TOTTENHAM H. ...	HOME	3 1
" 17	Bolton Wanderers ...	Away	1 2
" 20	MANCHESTER C. ...	HOME	4 1
" 27	Leeds United ...	Away	1 2
Oct. 4	WEST BROM. A. ...	HOME	4 3
" 11	Manchester United ...	Away	1 1
" 18	WHAMPTON W. ...	HOME	1 1
" 22	Aston Villa ...	Away	2 1
" 25	Blackburn Rovers ...	Away	2 4
Nov. 1	NEWCASTLE UTD. ...	HOME	3 2
" 8	West Ham United ...	Away	0 0
" 15	(1) NOTTM. F. ...	HOME	3 1
" 22	Chelsea ...	Away	3 0
" 29	BLACKPOOL ...	HOME	1 4
Dec. 6	(2) Portsmouth ...	Away	1 0
" 13	ASTON VILLA ...	HOME	1 2
" 20	PRESTON N. E. ...	HOME	1 2
" 26	Luton Town ...	Away	...
" 27	LUTON TOWN ...	HOME	...
1959			
Jan. 3	Leicester City ...	Away	...
" 10	(3) Bury ...	Away	...
" 17	EVERTON ...	HOME	...
" 24	(4) ...	...	...
" 31	Tottenham Hotspur ...	Away	...
Feb. 7	Manchester City ...	Away	...
" 14	(5) LEEDS UTD. ...	HOME	...
" 21	West Bromwich Albion ...	Away	...
" 28	(6) MAN. UTD. ...	HOME	...
Mar. 7	Wolverhampton W. ...	Away	...
" 14	(S.F.) BLACKBURN ...	HOME	...
" 21	Newcastle United ...	Away	...
" 28	WEST HAM UTD ...	HOME	...
" 30	BIRMINGHAM C. ...	HOME	...
" 31	Birmingham City ...	Away	...
Apr. 4	Nottingham Forest ...	Away	...
" 11	CHELSEA ...	HOME	...
" 18	Blackpool ...	Away	...
" 25	PORTSMOUTH ...	HOME	...
May 2	(Final)		
(1), (2), (3), (4), (5), (6)	= F.A. Cup Round dates.		

## Football Combination

1958	Opponents	Venue	F.A.
Aug. 23	FULHAM ...	HOME	2 2
" 27	Leicester City ...	Away	1 0
" 30	Tottenham Hotspur ...	Away	3 1
Sept. 6	Ipswich Town ...	Away	3 1
" 16	SWANSEA TOWN ...	HOME	1 1
" 20	Bristol Rovers ...	Away	8 2
" 27	BIRMINGHAM CITY ...	HOME	1 2
Oct. 4	Luton Town ...	Away	3 3
" 11	BRIGHTON & H. A. ...	HOME	2 2
" 18	Chelsea ...	Away	1 1
" 25	NOTTINGHAM F. ...	HOME	2 2
Nov. 1	West Ham United ...	Away	0 2
" 8	CARDIFF CITY ...	HOME	2 2
" 15	Portsmouth ...	Away	2 1
" 22	BRISTOL CITY ...	HOME	5 1
" 29	Charlton Athletic ...	Away	1 3
Dec. 6	CHELSEA ...	HOME	6 1
" 20	Fulham ...	Away	0 1
" 26	IPSWICH TOWN ...	HOME	...
" 27	Leyton Orient ...	Away	...
1959			
Jan. 3	TOTTENHAM H. ...	HOME	...
" 10	...	...	...
" 17	LEYTON ORIENT ...	HOME	...
" 24	Swansea Town ...	Away	...
" 31	...	...	...
Feb. 7	BRISTOL ROVERS ...	HOME	...
" 14	Birmingham City ...	Away	...
" 21	LUTON TOWN ...	HOME	...
" 28	Nottingham Forest ...	Away	...
Mar. 7	WEST HAM UTD. ...	HOME	...
" 14	Cardiff City ...	Away	...
" 21	PORTSMOUTH ...	HOME	...
" 28	Bristol City ...	Away	...
April 4	CHARLTON A. ...	HOME	...
" 11	...	...	...
" 18	LEICESTER CITY ...	HOME	...
" 25	...	...	...
May 2	...	...	...
Undated	Brighton & Hove A. ...	Away	...

## Metropolitan League

1958	Opponents	Venue	F.A.
Aug. 23	Bedford Town ...	Away	3 1
" 27	Dartford ...	Away	10 1
" 30	WEST HAM UTD. ...	HOME	3 0
Sept. 3	Crawley ...	Away	3 0
" 6	Dunstable Town ...	Away	1 2
" 10	Windsor & Eton ...	Away	2 2
" 13	CHELSEA ...	HOME	2 2
Oct. 1	FULHAM ...	HOME	3 2
" 4	Guildford City ...	Away	4 7
" 8	PORTSMOUTH ...	HOME	2 1
" 11	TONBRIDGE ...	HOME	5 3
" 18	Hastings United ...	Away	1 0
" 25	HAYWARDS HEATH ...	HOME	5 0
Nov. 1	LUTON TOWN ...	HOME	4 2
" 8	HASTINGS UNITED ...	HOME	4 2
" 12	WEST HAM UTD. ...	HOME	4 2
" 15	HEADINGTON U. ...	HOME	7 2
" 29	Eastbourne United ...	Away	1 1
Dec. 6	DIDCOT TOWN ...	HOME	2 2
" 13	Newbury Town ...	Away	1 5
1958			
Dec. 20	DARTFORD ...	HOME	6 2
" 26	Didcot Town ...	Away	...
" 27	BEDFORD TOWN ...	HOME	...
1959			
Jan. 3	Portsmouth ...	Away	...
" 10	DUNSTABLE TOWN ...	HOME	...
" 17	Headington Utd. ...	Away	...
" 24	FULHAM ...	HOME	...
" 31	CRAWLEY ...	HOME	...
Feb. 7	Brighton & Hove ...	Away	...
" 14	NEWBURY TOWN ...	HOME	...
" 28	BRIGHTON & HOVE ...	HOME	...
Mar. 7	CHELSEA ...	HOME	...
" 14	Luton Town ...	Away	...
" 21	GUILDFORD CITY ...	HOME	...
" 27	...	...	...
" 28	WINDSOR & ETON ...	HOME	...
" 30	Haywards Heath ...	Away	...
Apr. 11	Didcot Town ...	Away	...
" 18	EASTBOURNE UTD. ...	HOME	...
" 25	Tonbridge ...	Away	...

N.B.—Home matches will be played at Grovelands.



## ARSENAL MATCHES

### FOOTBALL LEAGUE

Saturday, 20th December, lost to Preston North End (Home) 1-2. (Half-time 1-2).

Team: Kelsey; Wills, Evans; Ward, Dodgin, Docherty; Clapton, Groves, Barnwell, Bloomfield, Henderson.

Referee: Mr. R. M. Jordan (Leicester).

Goalscorer: Henderson.

### FOOTBALL COMBINATION

Saturday, 20th December, lost to Fulham (Away) 0-1. (Half-time 0-1).

Team: Standen; Charlton, McCullough; Goring (Capt.), Fotheringham, Petts; R. Drake, Goulden, Strong, Dodson, Haverly.

Referee: Mr. M. N. Nester.

### METROPOLITAN LEAGUE

Saturday, 20th December, beat Dartford (Home) 6-2. (Half-time 4-0).

Team: Coe; D. Bacuzzi, Nicholas (Capt.); Davies, A. Young, Sanchez; Saxby, Clapton, D. P., F. O'Neill, Everitt, D. Heard.

Referee: Mr. C. L. J. Press (Staines).

Goalscorers: Clapton 3, O'Neill 2, Everitt.

### F.A. YOUTH CUP

Monday, 10th November, beat Dagenham (Away) 3-1. (Half-time 1-0).

Team: Coe; D. Robson, J. Harris; Sanchez, A. Young, C. Meldrum; M. Barber, Everitt (Capt.); J. Read, W. Meadows, R. McKechnie.

Referee: Mr. D. S. Adey.

Goalscorers: Read, Meldrum, Meadows.

## SOUTH-EAST COUNTIES LEAGUE

	P.	W.	D.	L.	F.	A.	Pts.
Portsmouth	17	11	4	2	56	27	26
Chelsea	14	12	1	1	71	13	25
Tottenham Hotspur	16	10	3	3	48	21	23
Bexleyheath	12	10	1	1	49	17	21
ARSENAL	14	9	3	2	42	13	21
Queen's Park Rangers	14	5	6	3	33	39	16
West Ham United	14	6	3	5	31	32	15
Charlton Athletic	13	6	2	5	39	39	14
Fulham	15	5	2	8	39	56	12
Southend United	16	5	0	11	38	63	10
Millwall	15	5	0	10	33	67	10
Leyton Orient	13	3	3	7	30	43	9
Brentford	15	3	3	9	28	46	9
Luton Town	13	4	1	8	22	44	9
Crystal Palace	14	2	0	12	21	39	4
Watford	13	1	2	10	22	51	4

## LEADING GOALSCORERS

### DIVISION I

GREAVES (Chelsea)	20
CHARLTON (Manchester U.)	17
SMITH (Tottenham)	17
WHITE (Newcastle)	17
HATSELL (Preston)	15
LOFTHOUSE (Bolton)	15
DOBB (Blackburn)	14
JOHNSTON (Blackburn)	14
DWIGHT (Nottingham F.)	13
KEEBLE (West Ham)	13
DICK (West Ham)	12
HERD (Arsenal)	12
KEVAN (W.B.A.)	12
SAUNDERS (Portsmouth)	12
WILSON (Nottm. Forest)	12

As a footnote for Arsenal followers—Herd's 12 goals have been scored in only 14 League games.

## HALF-TIME SCOREBOARD

### FIRST DIVISION

A Aston Villa v. Man. Utd.	E Leeds v. W.B.A.
B Bolton v. Everton	F Man. City v. Birmingham
C Burnley v. Leicester C.	G Nottingham F. v. Newcastle
D Chelsea v. Blackburn	H Wolves v. Portsmouth

### SECOND DIVISION

J Brighton v. Fulham	L Charlton v. Huddersfield
K Bristol R. v. Ipswich	M Lincoln C. v. Sheffield W.
N Stoke v. Leyton O.	

### THIRD DIVISION

P Q.P.R. v. Plymouth	R Southampton v. Newport
Q Reading v. Norwich	S Tranmere v. Bury

### FOURTH DIVISION

T Chester v. Millwall	U Crystal P. v. Aldershot
V Watford v. Walsall	

### FOOTBALL COMBINATION

W Leyton O. v. Arsenal	
------------------------	--