



NOTTINGHAM
Forest
FOOTBALL CLUB
City Ground, Nottingham



FOOTBALL LEAGUE DIVISION ONE

Saturday, April 12th, 1958

Nottingham Forest

v.

Luton Town

OFFICIAL

4d.

PROGRAMME

**KICK OFF with a
SHIPSTONE'S**



**The STAR
ATTRACTION**

IVOR THIRST for SHIPSTONE'S ALES

SHIPSTONE · STAR BREWERY · NEW BASFORD · NOTTINGHAM

Silknit Knitted Fabrics

for Outerwear and Underwear

Bromley House, Angel Row, Nottm.

**TOM
JOHNSTON**
SPORTS SPECIALIST
**6 Meadow Road
NETHERFIELD**

Phone Nottingham — 248652

*Enjoy your games!
Be well equipped!*

White Goal Nets, "Adidas" Football Boots, Terylene Shorts and Stockings, Referees' Nylon Outfits are a few of the new lines in stock.

Hockey, Badminton, Boxing, Golf and all Indoor Games specially catered for. Your enquiries will receive prompt attention.

Nottingham Forest Football Club

(Founded 1865)

F.A. Cup Winners, 1898. Second Division Championship, 1906/7, 1921/22. Third Division Championship, 1950/51. Second Division Championship (runners-up), 1956/57

President: Mr. Geo. B. Cottee.

Chairman: Mr. H. W. Alcock.

Vice-Chairman: Mr. J. H. Willmer.

Committee: Mr. F. Forman, Mr. J. Glenn, Mr. G. F. Sisson, Mr. H. Levey, Mr. G. Smalley, Mr. F. Chambers.

Hon. Medical Officer: Dr. S. C. Mattock.

Hon. Consulting Surgeon: A. N. Birkett, Esq.

Ground: Phone 88236.

Manager:
Mr. W. H. Walker.



Secretary and Hon. Treasurer:
Mr. G. Noel Watson, J.P.

VOL. VII, No. 22

Saturday, April 12th, 1958

News and Views from the City Ground

IT came as a big disappointment to everyone when last Saturday's game with Arsenal at Highbury had to be postponed due to the pitch being waterlogged following continuous rain and snow for many hours preceding the match.

Disappointing to our hosts, who had everything prepared to cater for a large Easter Saturday crowd, and disappointing, too, to our supporters who had travelled down to London in the many special trains and buses which made the journey; we extend our sympathies to them in particular.

Actually, however, we have been luckier than most clubs in the way of postponed games due to inclement weather over the years, because it is

The aerial photograph of the ground on the front cover is reproduced by kind permission of H. Tempest Ltd., Aerial and Industrial Photographers, Alfreton Road, Nottingham.

actually over three years—26th February, 1955—(when we were due to meet West Ham United at City Ground) since we were last concerned in one of these postponed matches. Prior to that, at City Ground, the last occasion was as far back as December, 1950, when Northampton should have been the visitors.

This now means we have to meet Aston Villa and Arsenal in mid-week on re-arranged dates and, in the case of the former, the match has been fixed and the date already announced, whilst the Arsenal game is expected to be on Monday, 21st April, with the kick-off at 7.30 p.m.

On the day before the Arsenal fixture—Good Friday—we paid our first visit to Stamford Bridge for a First Division game for over 30 years, and a very keen and entertaining game between Chelsea and ourselves ended all-square, with no goals to the credit of either side.

Oddity about this result was the fact it was the third time in successive games that we had been concerned in such a result, the previous two games against Fiorentina F.C. (the Italian friendly game) and Bolton Wanderers both ending with the same score.

We have two more items for the record book following the Easter games. The first concerns centre-forward Fay Coyle who played at Stamford Bridge; he became the first player from Northern Ireland to play for the senior side in a league game since 1938, when "Boy" Martin, another Irish International, was the club's leader.

Secondly we congratulate full-back Geoff. Thomas on completing his 400th League and Cup appearance in first-team colours at City Ground on Easter Monday with the game against Chelsea. With his 376 League and 24 Cup outings, Geoff. became the very first Forest player to reach the 400 total in post-war games.

Incidentally, although our lads showed very much improved form from that of more recent games against Chelsea, on the whole it wasn't a very satisfying performance. There is room for plenty of improvement to enable us to again display the brand of soccer that took the football world by storm in the early part of the season.

INTRODUCING OUR VISITORS

A HEARTY welcome to our last-but-one of the season League visitors, Luton Town.

It is not too long ago to remember the last occasion Luton came to City Ground, for our supporters have somewhat "painful" memories of this visit, when the "Hatters" inflicted our heaviest post-war league defeat at home with their 5-1 victory on 18th December, 1954!

That was the season Town were promoted to the First Division for the first time in their history. With 54 points, the same number as Birmingham City, who were the champions, they were runners-up of Division Two.

They were founded in 1885 when the amalgamation of Wanderers and Excelsior, two local sides, saw the formation of Luton Town. By employing professionals as early as 1891 they became the pioneers of the professional game in the South of England—then a formidable stronghold of the amateurs.

Elected to the Football League in 1897 they failed to gain re-election when finishing in the bottom position in the 1900/01 season, and it was a long time before they were able to re-enter the League—(Division Three (South) this time)—in 1920.

They gained promotion to the Second Division by winning the Championship of the Third (South) in 1936/37 and that was the season when Joe Payne set up a club record with 55 goals scored in 39 games; apart from being a personal "best-ever", this still remains a record for the section.

Incidentally, on April 13th, 1936, Joe scored ten of the 12 goals scored in

Luton's game with Bristol Rovers and earned himself thereafter the nickname "Ten-Goal"—and this feat is still a record in both English and Scottish Football Leagues!

Their home ground is Kenilworth Road and they are familiarly known as "The Hatters"; their colours are white shirts and black shorts, and the ground record is 28,433, made on the occasion of the visit of Arsenal in the 6th Round of the Cup in 1952. Luton's manager is

The records which you hear to-day have been kindly provided by and can be obtained from Henry Farmer's, Long Row, Nottingham.

a well-known personality in football, Mr. "Dally" Duncan, who is, of course, a former Scottish International who played for many years with Derby County and often "guested" for our club in war-time soccer.

By the way, in the F.A. Cup Luton have not fared well, for they have yet to reach the semi-finals for the first time in their long career.

Since being promoted to the First Division they have played consistently well. They have always been noted for playing the high grade of football necessary to bring good results, and this season they have always been in one of the top six positions in the League table.

At Kenilworth Road they have achieved some notable victories including a 5-1 win over West Bromwich Albion, a draw 2-2 with Manchester United, and wins of 7-1 over Sunderland, 3-1 over



Photo by A. Wilkes & Son, West Bromwich

RON BAYNHAM

Wolves and 4-0 over Arsenal. Away they haven't quite reproduced the same devastating sort of form but have still well-merited victories to their credit over Blackpool, Leeds, Chelsea, Bolton, Everton and Burnley—no mean feat.

We were beaten 1-3 on our visit to their ground in November last; hardly surprising, because their enclosure has never been a very happy hunting ground for us. They have had the better of the 15 post-war meetings so far with us (our score given first): 1946/47 4-2 (H), 2-3 (A); 1947/48 1-2 (H), 1-2 (A); 1948/49 2-0 (H), 3-4 (A); 1951/52 2-0 (H), 3-3 (A); 1952/53 4-3 (H), 0-2 (A); 1953/54 2-1 (H), 1-0 (A); 1954/55 1-5 (H), 0-3 (A); 1957/58 1-3 (A).

Here is the complete record (excluding to-day's meeting):—

P.	W.	D.	L.	F.	A.	Pts
Forest	15	6	1	8	27	34 13

Here are some pen-pictures of members of their staff (some of whom we hope to see on duty today):—

RON BAYNHAM (goal). Birmingham born, and signed from Worcester City. Made his debut in 1952/53 and soon developed into one of the best 'keepers in the country. Is a full England International.

SEAMUS DUNNE (back). Arrived at Luton in 1950 after a spell with Shelbourne. He is an Eire International—born in Wicklow—and seldom gives anything other than a steady and reliable performance for both club and country.

KEN HAWKES (back). When Les. Jones departed to Aston Villa last December, this youngster was drafted into the first team and quickly settled down to give impressive displays. Born in Co. Durham, he was secured from Shotton C.W., members of the North Eastern League.

JOHN GROVES (wing-half). This 6ft. youngster is Derby born and was formerly an inside-forward but was moved to wing-half to the exclusion of Reg. Pearce (subsequently transferred to Sunderland a few weeks ago). He was signed by Luton from an amateur club.

TERRY KELLY (centre-half). Now featuring regularly as pivot due to the pending retirement from the game of stalwart and long-serving Sid. Owen. Used to be with Vauxhall Motors F.C., who have their factory in Luton, where he was born. Stands 5ft. 11ins. in height.

SID OWEN (centre-half). Following his signing from Birmingham for a modest fee, he developed into one of the outstanding centre-halves in the game. Gained full England honours and has given Luton great service over the years. Has recently announced his intention of retiring at the end of the season.

Norman F.
POTTER
LTD
Decorators

NOTTM.

48055

Nottingham Direct Family Supply LIMITED

Soft Drinks of Quality delivered to your door

Hempshill Lane, Bulwell

Phone: Bulwell 278101

Introducing Our Visitors—*continued*

DAVID PACEY (wing-half). A local lad who started his career with Hitchin Town. He too has made the first-team grade this season and looks like becoming a permanent feature of the tight defensive scheme prevailing at Kenilworth Road.

BOB MORTON (wing-half). Be it in the centre-forward, inside forward, wing or wing-half positions, he is always capable of some grand football displays. An England "B" representative and reserve for the full England side on several occasions. Born at Clinton (Bucks), Luton is his only professional club.

JIMMY ADAM (wing). This speedy Scot is at home on either flank; he joined Luton from North-Eastern League club Spennymoor United in 1954. Glasgow born, he's 5ft. 8ins. and 11st. 10lbs. in weight.

GORDON TURNER (inside-forward). One of the most prolific marksmen in the Division. Son of a former Hull City winger, he's an ex-amateur player who hails from Doncaster. Is fast, strong and possesses a powerful shot in either foot. Notched 30 goals last season and

should well exceed that total before the close of the present season.

ALAN BROWN (centre-forward). Secured from Blackpool last season and has proved a very shrewd purchase, for his form this season at centre-forward has put him again in the running for a Scottish cap. One of the game's unluckiest players (injuries twice robbed him of Cup appearances with Blackpool and several caps) he is a great asset to the attacking pattern of the Town.

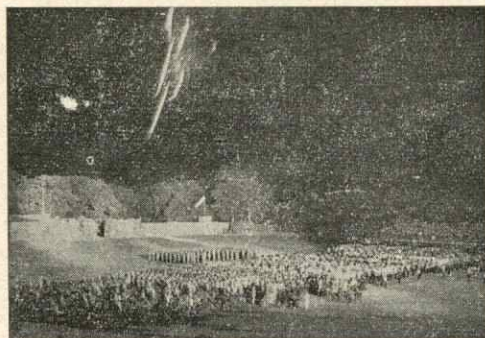
GEORGE CUMMINS (inside-forward). Dublin-born, he joined Town from Everton in 1953 in exchange for a hefty cheque. A clever little ball-player who hasn't always "hit the high spots" with Luton but is now featuring in the side with great success.

GEORGE McLEOD (winger). He's 5ft. 10ins. in height and weighs 11st. 8 lbs. and comes from Inverness. Has often played at outside-right but is more at home and effective on the left flank.

MICHAEL CULLEN (wing). Another Scot—he's from Glasgow and was with a junior club before joining Luton in 1952. Gained his first cap against Austria a couple of seasons ago.

FURSE

ILLUMINATION SPECIALISTS



Northern Command Tattoo, Leeds—A FURSE Contract

for
OUTDOOR AND
INDOOR SPORTS
AND FESTIVITIES
including
FOOTBALL GROUND
FLOODLIGHTING

Complete schemes and estimates
submitted and enquiries invited

W. J. FURSE & Co. Ltd., Electrical Installation Contractors, TRAFFIC STREET
(Tel.: 83471, 5 lines) NOTTINGHAM. Also London, Manchester, Birmingham

Read

REYNOLDS
NEWS

every Sunday

Wolves' Patience Rewarded?

Two Wolverhampton Wanderers' players, centre-forward Jimmy Murray and outside-right Norman Deeley, are chasing hard for a League Championship medal—and club goal scoring records.

The medals seem a mere formality. Only the most sensational collapse of Wolves could prevent them winning the title. Even the club records appear quite possible.

Take Jimmy Murray's position. Prior to Easter he has scored 31 goals—28 in the League and a Cup hat trick, which leaves him eight to get in eight games to beat the post-war best of 36 by Dennis Wilshaw.

It's a difficult task but who will say it is beyond the young Wolves' centre, served as he is by such a magnificent team.

Deeley could beat Johnny Hancock's 1955 total of 28, the highest ever by a Wolves' winger, as the little fellow has notched 21.

Deeley is a living example of the reward of patience. He played his first League game in 1951, and made only rare appearances until this season.

CITY	GROUND	ATTENDANCES
Sat. Preston N. E.	33,048	3. 0 p.m.
Wed. Birmingham C.	28,555	6.20 p.m.
Sat. Manchester C.	37,041	3. 0 p.m.
Wed. Burnley	26,692	5.45 p.m.
Sat. West Brom.	41,675	3. 0 p.m.
Sat. Man. Utd.	*47,654	3. 0 p.m.
Sat. Blackpool	41,736	3. 0 p.m.
Sat. Arsenal	34,216	2.30 p.m.
Sat. Aston Villa	30,232	2.15 p.m.
Sat. Sunderland	24,112	2.15 p.m.
Thr. Newcastle Utd.	32,359	2.15 p.m.
Sat. Sheffield Wed.	31,753	2.15 p.m.
Sat. Gillingham	24,546	2.15 p.m.
(Cup)		
Sat. Leeds Utd.	23,147	2.30 p.m.
Wed. West Brom. A.	†46,477	2.15 p.m.
(Cup)		
Sat. Portsmouth	23,194	3. 0 p.m.
Sat. Tottenham	32,184	3. 0 p.m.
Sat. Leicester C.	38,191	3. 0 p.m.
Sat. Wolves	40,047	3. 0 p.m.
Sat. Bolton W.	23,910	3. 0 p.m.
Mon. Chelsea	24,985	3. 0 p.m.

Total to date 685,754

Average 32,655

(*New ground League record).

(†New ground Cup record).

Best attendance away, 66,123 v. Manchester United, Saturday, February 22nd, 1958.

F. SISSON & SONS Ltd.

PRIVATE and PUBLIC WORKS CONTRACTORS

Office and Works: 79 CROMFORD ROAD
LANGLEY MILL, NOTTM.

Proprietors of Chellaston
Brick Company Limited



Brick Works: Chellaston,
Derby and Chilwell, Notts.

ESTABLISHED 1899

Phone: LANGLEY MILL 2171/2

football
fans read

NEWS OF THE WORLD

expert
reports



VISIT

Capocci's

SNACK

BARS

QUALITY FOOD
QUICK SERVICE

All the Best People Use . . .

BENNETT'S GARAGE

24 - 30 Shakespeare Street, Nottingham

NEVER CLOSED Telephone—44074 (4 lines)

FOLLOW YOUR TEAM BY COACH !

SATURDAY, APRIL 19th, 1958

Sunderland Football Ground

Depart Huntingdon Street, 8.0 a.m.

20/0 return

TRENT

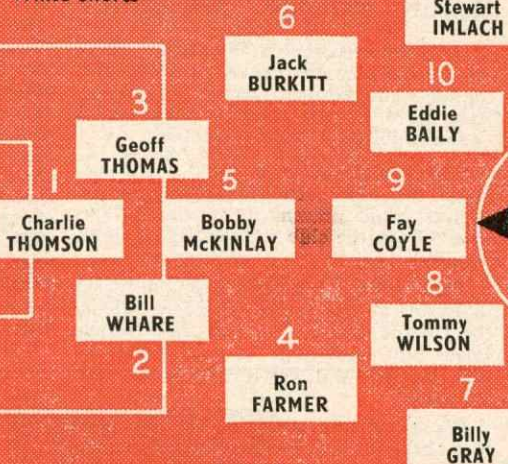
HUNTINGDON STREET
NOTTINGHAM

Tel. 45601-6

MITCHELLS & BUTLERS

NOTTINGHAM FOREST

Red Shirts,
White Shorts



LUTON TOWN

White Shirts,
Black Shorts



Referee—H. WEBB (Leeds)

Linesmen—V. ALDRIDGE (Red), F. R. BATE (Yellow)

M&B THAT'S MARVELLOUS BEER M&B



THE
'CONVERTIBLE'

Have you seen the new range of
'Arthur Rowe'
SOCCER BOOTS

Prices from
39/- to 76/9

Call or write for
leaflet showing
all these
models

from :-

Redmayne & Todd Ltd.

CARRINGTON STREET

NOTTINGHAM

PARTIES OF 8 OR MORE

attending Football Matches and other
Sporting Events may travel (by prior
arrangement) at

SPECIAL REDUCED FARES

FOR THE RETURN JOURNEY

Full details from Stations, Offices and Agencies

BRITISH RAILWAYS

TRY A . . .

BENDIGO

EXTRA STRONG ALE

. . . on the
strength of it !

One of the

HOME ALES

World Famed
PRACTICAL
SPORTS
OUTFITTERS

Stockists of leading makes of
Sportswear

Sports Footwear
Ground Equipment

REPAIRS A SPECIALITY

AGENTS FOR NOTTS. MARL

Enquiries solicited. Free lists
sent on request.

Gunn & Moore
Limited

49 Carrington Street
Nottingham

Phone 45923/4

Kick off with

TENNANT BROTHERS LTD - EXCHANGE BREWERY - SHEFFIELD 3



Post-War Appearances of Players in Forest Colours

LAST season we gave a list of the players who have worn the first-team colours in the post-war games of the club. It created enormous interest, so we have taken the liberty of again including an up-to-date list.

So far, from 1946/47 and including the current season, we have utilised the services of 97 different players and these are given as follows (bearing in mind that a number of players have appeared in several different positions).

GOALKEEPERS: Savage, Johnston (who, in the absence of Platts on January 29th, 1947, v. Luton (away) had to play goal), Roberts, Platts, Orgill, Walker, Ward, Canning, Farmer, Nicholson, Thomson, H. Sharratt, Lightening. (Total 13).

RIGHT-BACK: Thomas, McCall, Shuffbottom, Brigham, Hutchinson, Whare and Banham. (Total 7).

LEFT-BACK: Thomas, McCall, Hutchinson, Clarke, Burkitt, Lay and Watson. (Total 7).

RIGHT-HALF: McCall, Barks, Simpson, Pritty, Morley, Elliott, Allen, Burkitt, Anderson, Orr, McKinlay, Thompson, French, Martin, Farmer. (Total 15).

CENTRE-HALF: McCall, Davies, Baxter, Pritty, Rawson (K.), Gager, Burkitt, Baker, Orr, McKinlay, Banham, Watson. (Total 12).

LEFT-HALF: McCall, Baxter, Simpson, Pritty, Knight, Morley, Elliott, Ottewell,

Burkitt, Whare, Anderson, Orr, Martin, Watson, Hutchinson, Farmer. (Total 16).

OUTSIDE-RIGHT: Mee, Johnston, Scott, Morley, Kaile, Elliott, Linaker, Love, Wilson, Moore, Small, Imlach, Higham, Gray, Jones, Joyce. (Total 16).

INSIDE-RIGHT: Mee, Hinchcliffe, Brown (R. A. J.), Johnston, Scott, Simpson, Leverton, Morley, Wheatley, Martin (F.), Wilkins, Ottewell, Lindley, Johnson, Love, Ashman, Kelly, Wilson, Thompson, French, Martin (T.), Lemon, McLaren, Turner, Barrett, Holder, Imlach, Jones, Bailly, Quigley, Joyce. (Total 31).

CENTRE-FORWARD: McCall, Barks, Mee, O'Donnell, Johnston, Leverton, Edwards, Lyman, Morley, Gunn, Morris, Lee, Jones (W.), Martin (F.), Ottewell, Hullett, Love, Ardron, Collindridge, Wilson, Moore, Lemon, Blackman, Small, Higham, Watson, Huddleston, Simcoe, Coyle. (Total 29).

INSIDE-LEFT: Mee, Brown (R. A. J.), Johnston, Edwards, Scott, Simpson, North, Leverton, Lyman, Morley, Rawson (C.), Wheatley, Martin (F.), Kaile, Wilkins, Ottewell, Ashman, Johnson, Love, Capel, Kelly, Wilson, Moore, Thompson, French, Martin (T.), Lemon, Cluroe, Barrett, Holder, Alexander, Lishman, Bailly, Joyce, Quigley. (Total 35).

OUTSIDE-LEFT: Johnston, Leverton, Pritty, Lyman, Morley, Lee, Kaile, Capel, Collindridge, Burton, Moore, Thompson, Lemon, McLaren, Small, Imlach, Alexander, Langford, Jones, Gray. (Total 20).

On Draught—Bass, Worthington 'E', Youngers, Guinness, Taddys

BELL INN

Old Market Square, Nottingham

In Bottle — Whitbreads, Ind Coope, Taddys, Mackesons, Lager

"AN OLD ENGLISH INN"

A DOUBLE DIAMOND works wonders



IND COOPE'S DOUBLE DIAMOND BREWED AT BURTON

FOREST INTERNATIONALS

In a previous issue we spoke of Forest players who have represented their country whilst playing for the club (as distinct from Internationals who have also been on the books). This has aroused some interest, and for the benefit of those supporters who might like to see the full list, here it is:—

England

Burton, F. 1889 v. I.
Calvey, T. 1902 v. I.
Danks, T. 1895 v. S.
Forman, Frank. 1898/9, 1901/2 v. S., 1899/1903 v. W., 1898/9, 1902 v. I.
Forman, Fred. 1899 v. W., I. and S.
Goodyer, A. C. 1879 v. S.
Graham, T. 1932 v. I., 1931 v. France.
Harrison, A. 1929 v. South Africa and Sweden.
Iremonger, J. 1901 v. S. and Germany, 1902 v. I.
Jones, H. 1923 v. France.
Leighton, J. E. 1886 v. I.
Linacre, H. J. 1905 v. S.
Lindley, T. 1886/7/8/9/90 v. S., 1886/7/8/90 v. W., 1886/7/8/91 v. I.
Luntley, E. 1880 v. S. and W.
Richards, C. H. 1898 v. I.
Sands, J. 1880 v. W.
Smith, A. 1891 v. S. Africa.
Smith, W. 1891 v. Canada.

Spouncer, A. 1900 v. W.
Thompson, F. 1891 v. Canada.
Thompson, W. P. 1929 v. Sth. Africa (2).
Widdowson, S. W. 1880 v. S.

Wales

Davies, R. G. 1946 v. E. and S. (Victory Internationals).
Green, A. W. 1908 v. S.
Hughes, E. 1906/10/11/12 v. I., 1908/10/11/12 v. E., 1908/10/11/12 v. S.
Jones, A. T. 1905/6 v. E.
Jones, C. J. 1926/28 v. E., 1927 v. S. and I.
Morris, A. G. 1899/1903/5/7/8/10/11/12 v. E., 1899/1903/5/7/10/11 v. S., 1910/11 v. I.

Eire

Kelly, N. 1954 v. Luxembourg.

Ireland

Chambers, J. 1932 v. E., S. and W.
Hanna, J. 1912 v. S. and W.
Martin, D. 1937 v. S., 1938 v. E., 1939 v. S.
Morgan, F. G. 1927/8/9 v. E., 1924/8 v. S., 1928 v. W.
Nelis, P. 1923 v. E.
(Key to abbreviations is: E, England; S, Scotland; I, Ireland; W, Wales; the others are self-explanatory).
There have been 22 England "caps", 6 Welsh, 5 Irish and one Eire.

WAT SIMMONS

Makers of ROLLER SHUTTERS in
Steel or Wood—for all purposes ★

Boden St. and Denman St.
NOTTINGHAM

Sunblinds and Inside
Blinds for Shop
Office and Home.

Modern Venetian
Blinds

FIXTURES—FIRST DIVISION 1957-58

Date 1957	Opponents	Grd.	Date 1958	Opponents	Grd.
Aug. 24 Sat.	PRESTON N. E.	... h 2-1	Jan. 4 Sat.	(3) GILLINGHAM	... h 2-0
Aug. 28 Wed.	BIRMINGHAM C.	... h 1-1	Jan. 11 Sat.	*Manchester City	... a 1-1
Aug. 31 Sat.	Sheffield Wed.	... a 2-1	Jan. 18 Sat.	LEEDS UNITED	... h 1-1
Sept. 4 Wed.	*Birmingham City	... a 2-0	Jan. 25 Sat.	(4) West Brom. A.	... a 3-3
Sept. 7 Sat.	MANCHESTER C.	... h 2-1	Jan. 29 Wed.	(4) WEST BROM A.	h 1-5
Sept. 9 Mon.	Burnley	... a 1-3	Feb. 1 Sat.	PORTSMOUTH	... h 2-0
Sept. 14 Sat.	Leeds United	... a 2-1	Feb. 8 Sat.	West Bromwich A.	... a 2-3
Sept. 18 Wed.	BURNLEY	... h 7-0	Feb. 15 Sat.	(5) TOTTENHAM H.	h 1-2
Sept. 21 Sat.	Portsmouth	... a 4-1	Feb. 22 Sat.	Manchester United	... a 1-1
Sept. 28 Sat.	WEST BROM. A.	... h 0-2	Mar. 1 Sat.	(6) LEICESTER C.	h 3-1
Oct. 5 Sat.	Tottenham Hotspur	... a 4-3	Mar. 8 Sat.	Blackpool	... a 0-3
Oct. 12 Sat.	MAN. UTD.	... h 1-2	Mar. 15 Sat.	WOLVERHAMPTON	h 1-4
Oct. 19 Sat.	Leicester City	... a 1-3	Mar. 29 Sat.	BOLTON WAND.	... h 0-0
Oct. 26 Sat.	BLACKPOOL	... h 1-2	Apr. 4 Fri.	Chelsea	... a 0-0
Nov. 2 Sat.	*Wolverhampton W.	... a 0-2	Apr. 7 Mon.	CHELSEA	... h 1-1
Nov. 9 Sat.	ARSENAL	... h 4-0	Apr. 12 Sat.	LUTON TOWN	... h 1-1
Nov. 16 Sat.	*(1) Bolton Wand.	... a 0-2	Apr. 19 Sat.	Sunderland	... a
Nov. 23 Sat.	ASTON VILLA	... h 4-1	Apr. 21 Mon.	*Arsenal	... a
Nov. 30 Sat.	Luton Town	... a 1-3	Apr. 26 Sat.	EVERTON	... h
Dec. 7 Sat.	(2) SUNDERLAND	h 2-0	Apr. 30 Wed.	Aston Villa	... a
Dec. 14 Sat.	*Everton	... a 1-1			
Dec. 21 Sat.	*Preston North End	... a 0-2			
Dec. 25 Wed.	Newcastle United	... a 4-1			
Dec. 26 Th.	NEWCASTLE U.	... h 2-3			
Dec. 28 Sat.	SHEFFIELD W.	... h 5-2			

* Indicates fixture will finish under floodlights.

OUR NEXT HOME MATCHES

Wednesday, April 16th, 5.30 p.m.

Midland League

GOOLE TOWN

Saturday, April 19th, 3 p.m.

Midland League

MANSFIELD TOWN RESERVES

Saturday, April 26th, 3 p.m.

First Division

EVERTON

FIXTURES—MIDLAND LEAGUE 1957-58

Date 1957	Opponents	Grd.	Date 1958	Opponents	Grd.
Aug. 24 Sat.	Bradford (P.A.)	Res. a 2-3	Dec. 28 Sat.	Scarborough	... a 1-2
Aug. 28 Wed.	Lincoln City Res.	... a 1-1			
Aug. 31 Sat.	SCARBOROUGH	... h 1-2	Jan. 4 Sat.	Grantham Town	... a 2-7
Sept. 4 Wed.	LINCOLN C. RES.	... h 2-0	Jan. 18 Sat.	Rotherham U. Res.	... a 1-1
Sept. 7 Sat.	York City Res.	... a 1-2	Feb. 1 Sat.	Notts. County Res.	... a 2-0
Sept. 11 Wed.	WORKSOP TOWN	... h 4-2	Feb. 8 Sat.	GRIMSBY T. RES.	h 3-2
Sept. 17 Tu.	Workshop Town	... a 1-1	Feb. 15 Sat.	Frickley Colliery	... a 0-2
Sept. 21 Sat.	NOTTS. CO. RES.	... h 5-2	Feb. 22 Sat.	BOSTON UNITED	h 0-3
Sept. 23 Mon.	Denaby Utd.	... a 4-3	Mar. 1 Sat.	Corby Town	... a 1-2
Sept. 28 Sat.	Grimsby T. Res.	... a 1-2	Mar. 8 Sat.	SCUNTHORPE RES.	h 1-0
Oct. 2 Wed.	DENABY UTD.	... h 5-1	Mar. 12 Wed.	GRANTHAM RES.	... h 3-1
Oct. 9 Wed.	DONCASTER RES.	h 6-1	Mar. 15 Sat.	Peterborough Utd.	... a 0-4
Oct. 12 Sat.	Boston United	... a 3-5	Mar. 19 Wed.	FRICKLEY COLL.	... h 1-1
Oct. 19 Sat.	PETERBOROUGH U.	h 3-0	Mar. 22 Sat.	KINGS LYNN	... h 2-1
Oct. 26 Sat.	Scunthorpe U. Res.	... a 2-0	Mar. 29 Sat.	Goole Town	... a 0-3
Nov. 6 Wed.	CORBY TOWN	... h 8-2	Apr. 4 Fri.	WISBECH TOWN	h 1-2
Nov. 9 Sat.	Kings Lynn	... a 3-0	Apr. 5 Sat.	HULL CITY RES.	h 2-0
Nov. 13 Wed.	ROTHERHAM RES.	h 2-3	Apr. 12 Sat.	Bradford City Res.	... a
Nov. 16 Sat.	YORK CITY RES.	... h 3-1	Apr. 16 Wed.	GOOLE TOWN	... h
Nov. 23 Sat.	Mansfield T. Res.	... a 2-2	Apr. 19 Sat.	MANSFIELD RES.	h
Nov. 30 Sat.	BRADFORD C. RES.	h 2-4	Apr. 26 Sat.	Gainsborough T.	... a
Dec. 7 Sat.	*Hull City Res.	... a 1-3		Wisbech	... a
Dec. 14 Sat.	GAINSBOROUGH T.	h 1-2			
Dec. 21 Sat.	BRADFORD RES.	... h 3-0			
Dec. 25 Wed.	Doncaster R. Res.	... a 2-2			

* Indicates fixture will finish under floodlights.

	P.	W.	D.	Home		Goals		Away		Goals		P.
				L.	F.	A.	L.	F.	A.	L.	F.	
Wolves	38	16	3	1	58	21	10	4	4	37	23	59
Preston North End	38	17	1	1	59	13	7	5	7	33	35	54
West Brom. A.	39	12	4	3	49	25	4	10	6	33	39	46
Tottenham H.	39	11	4	4	55	32	7	5	8	32	43	45
Manchester City	38	13	4	2	54	30	7	1	11	40	61	45
Luton Town	39	12	3	5	43	21	6	3	10	22	36	42
Manchester Utd.	36	10	3	5	44	24	6	6	6	36	38	41
Burnley	38	15	1	3	48	19	4	2	13	25	52	41
Blackpool	38	10	2	7	45	34	7	4	8	30	29	40
NOTTM. FOREST	37	9	4	6	40	24	6	4	8	26	31	38
Chelsea	39	9	4	6	43	31	5	6	9	36	45	38
Arsenal	38	10	2	7	47	38	6	2	11	22	40	36
Birmingham	39	8	5	6	42	35	5	5	10	31	52	36
Bolton Wand.	38	9	4	6	37	30	5	4	10	24	47	36
Everton	38	5	9	6	32	30	6	2	10	26	38	33
Leeds United	39	10	5	5	33	23	3	2	14	15	38	33
Aston Villa	38	11	3	5	43	25	3	2	14	24	58	33
Portsmouth	38	10	5	3	41	27	2	2	16	27	52	31
Leicester City	39	11	4	5	54	37	2	1	16	29	65	31
Sunderland	39	6	7	7	29	33	2	5	12	19	61	28
Newcastle Utd.	36	5	3	9	29	33	6	2	11	33	37	27
Sheffield Wed.	39	10	2	7	41	38	0	5	15	24	50	27

NOTTINGHAM FOREST SPORTSMEN'S CLUB

Headquarters

TRIP TO SUNDERLAND

SATURDAY, APRIL 19th, 1958

Bus leaves Huntingdon Street at 7.45 a.m.

Apply to Mr. A. G. Ridgway, N.F.S.C. Club-room (rear of Main Stand) after to-day's match or phone 85987 any evening after 6.0.

1957/58 PROMOTION SOUVENIR HANDBOOK

Have you got your copy of the Nottingham Forest Promotion Souvenir Handbook yet? Price 1/- and on sale on the Ground and at the Programme Hut it contains facts, figures and photographs of 1956/57 promotion-winning season in addition to fixtures and other details about the present campaign.

Whilst in Nottingham

visit

THE HAND INN

Wollaton Street
(Off Theatre Square)

for

WATNEY'S ALES

On Draught and in Bottle

FULLY LICENSED

CAVENDISH CINEMA

Phone 44488 ST. ANNS WELL ROAD Phone 44488
40/47 Trolley Bus from Long Row Car Park Five Minutes from City Centre

Monday, April 14th Three Days
Norman Wisdom Jill Dixon Margaret Rutherford
JUST MY LUCK (u)

Van Heflin Julia Adams
WINGS OF THE HAWK
(u) Technicolor

Thursday, April 17th Three Days
Cameron Mitchell Teresa Wright
ESCAPADE IN JAPAN
(u) Technicolor
Fred MacMurray Joan Weldon
DAY OF THE BADMAN
(U) CinemaScope Eastmancolour

HALF TIME

A	Doncaster R. Lincoln City	E	Portsmouth Blackpool	J	Leyton O. Ipswich T.
B	Tottenham H. Man. Utd.	F	Newcastle U. Arsenal	K	Birmingham Leeds United
C	Charlton A. NOTTS. C.	G	Sheff. Wed. Everton	L	Chelsea Bolton W.
D	Chesterfield Mansfield T.	H	Middlesbro' Blackburn R.	M	Bristol City Barnsley

YOU ARE IN THE
PORK FARMS PIE
AREA

Forest Fans will enjoy the World's Greatest Soccer Magazine
Charles Buchan's FOOTBALL MONTHLY

Place a Regular Order with your Newsagent

WETTERN'S

(Next door to the Forest Football Ground)

BUILDERS MERCHANTS

FOR ALL TYPES OF BUILDING MATERIALS

Wettern Brothers (Nottm.) Ltd.
Telephone : 83331 (10 lines) Trent Bridge, Nottingham.

SCORE BOARD

N	Man. City Sunderland	R	Rotherham U. Bristol Rov.	V	Burnley Wolves
O	Cardiff City West Ham	S	West Brom. Leicester C.	W	Stoke City Fulham
P	Liverpool Sheff. Utd.	T	Preston N. E. Aston Villa	PENNY on the BALL Sat., March 1st. No. 43666 Mr. G. F. Jones, 28 Forest Road, Clipstone, nr. Mansfield	
Q	Huddersfield Derby County	U	Grimsby T. Swansea T.		

The Army & General Stores L^{td.}

OVERALLS for all Trades Strong Working BOOTS
RUBBER KNEE BOOTS OILSKINS & WATERPROOFS
Blue Melton Donkey Jackets, Fawn Duffle Coats with Hood
Government Surplus Clothing & Equipment Camp Equipment

Note only Local Address Telephone 54998
Carrington Street Bridge (Nr. Midland Station) Nottingham

1ST

DIVISION FOOTBALL

1ST

CLASS TRAVEL

1ST

CHOICE COACHES



Robin Hood
FROM HOME TO THE
AWAY GAME

ROBIN HOOD COACHES, Huntingdon Street Tel. 44097