



# BLUES

*News*

THE OFFICIAL  
PROGRAMME OF

## BIRMINGHAM CITY FOOTBALL CLUB

SEASON 1957-58

PRICE THREEPENCE

**BOTH IN THE FIRST DIVISION**

**“THE BLUES”**

and

**WIMBUSH'S**

**BREAD and CONFECTIONERY**

**A. D. WIMBUSH & SON LTD.**

★ ★ ★ ★ ★ ★ ★

**Stars of Football**

**Birmingham City F.C.**

★ ★ ★ ★ ★ ★ ★

**Stars of the Cycling World**

**Hercules**

**THE FINEST BICYCLE BUILT TO-DAY**

# BIRMINGHAM CITY FOOTBALL CLUB LIMITED

*Board of Directors :*

H. MORRIS (*Chairman*)      D. F. WISEMAN (*Vice-Chairman*)  
H. DARE   W. H. DARE   L. J. MORRIS   S. F. L. RICHARDS  
*Hon. Medical Officer :* DR. E. GREGORY

*Officials :*

*Team Managers :* A. TURNER AND A. BEASLEY  
*Secretary :* W. C. ADAMS  
*Registered Offices :* ST. ANDREW'S GROUND, BIRMINGHAM, 9  
*Telephone :* VICTORIA 0101 *Telegrams :* "Heathen, Birmingham"

SATURDAY, 15th MARCH, 1958

## THE HARD ROAD AHEAD

**G**OOD AFTERNOON — It takes a lot of hard graft to make up for two very lean months, but Blues are quite capable of a fight to the finish. There are several clubs who have had matters harder than we have this season, but we are not relying on them for our safety. The future of Birmingham City is in our own hands, and we're determined to keep it so even though there are times when fate scorns super-human efforts.

Luton Town, our visitors this afternoon, have enjoyed a highly successful run as their League position indicates. But since their 2-1 victory at Burnley on February 15th, they have been beaten 3-1 at home by Preston North End, and then beaten 2-1 by Sheffield Wednesday, and last week were again on the losing end when Manchester City won 2-1 at Kenilworth Road.

At Luton earlier this season Blues came unstuck to the tune of three goals all scored in the first 50 minutes. This afternoon we are hoping for revenge and a repeat of the corresponding game last season when the three-goal margin was in favour of Birmingham (Brown (2) and Orritt).

Last week's display at Bolton left a lot to be desired as they say, but the Bolton effort was not exactly inspiring for the Cup semi-finalists. Their notorious offside trap was freely exploited and in one session goalkeeper Hopkinson must have set up a record for the number of back passes he collected. However, Nat Lofthouse got the goal that mattered in the 66th minute.

# TALKING

by the Editor

**H**ELLO — It doesn't seem a year since we were sweating on our Cup semi-final game against Manchester United at Sheffield does it? Yet here we are with the new United in Birmingham for another semi-final at Villa Park next week.

Which reminds me that Blues weren't the only team to have it short and sweet in this season's Cup competition. Luton were also knocked out in the third round — 3-0 at Stockport.

The Hatters have not had a great deal of satisfaction from their last seven games at St. Andrew's. Five matches have gone in favour of Birmingham with two drawn.

Gordon Turner has kept Luton well in the goal scoring picture this term. His goal against Wednesday brought his tally to 28 to draw level with Preston's Tommy Thompson.

Turner, remember, got two goals against Blues at Kenilworth Road last November. Left-winger McLeod scored the other.

**MILLER**  
CYCLE DYNAMO LIGHTING SETS  
H. MILLER & CO., LTD · ASTON BROOK ST

# POINTS

Last week-end was a gloomy day for Blues and Luton. While we were leaving the points at Bolton as a result of Nat Lofthouses's second-half goal, Luton were being beaten at home by Manchester City.

Our Reserves were in opposition at St. Andrew's and after 80 minutes, with Birmingham leading 2-1, a snowstorm obliterated the ground and the match was abandoned.

Trevor Smith's thigh injury forced him to cry off at the last minute at Bolton, and Graham Sissons made his debut at centre-half with the seniors. Naturally Nat Lofthouse isn't the easiest of characters to deal with, but Graham put up a stout show.

Blues are all set for a busy flying session. For the fixture with Valencia in Spain on March 19th, the team will leave London airport on March 17th, returning on the 20th. On Easter Friday the team will take to the air again for the clash with Portsmouth at Fratton Park.

After that match Blues will fly to Sunderland ready for Saturday's game, and return by air the same night.

INTERNATIONAL LEAGUE MATCH

THE FOOTBALL LEAGUE

versus

THE SCOTTISH FOOTBALL LEAGUE

at

ST. JAMES' PARK, NEWCASTLE-UPON-TYNE

26th March, 1958

Kick-off 7.45 p.m.  
(Floodlight)

Tickets are available in advance from Newcastle United F.C. to whom all applications should be sent, together with remittance and stamped addressed envelope.

WING STANDS ..	7/6
CENTRE Paddock ..	5/-
WING Paddock ..	4/-
GOAL ENCLOSURES ..	3/-
POPULAR SIDE ..	2/6



## WILLIE HUME

**W**ILLIE HUME our recent acquisition from Dunfermline Athletic is a versatile inside forward who came to St. Andrew's with a strong recommendation from Scotland, and has already shown his capabilities in the Football Combination side. He was born at Armada'e and his statistics are 5 ft. 11½ ins. and 12 st. 8 lbs.

## LAST WEEK'S LINE-UP

BOLTON WANDERERS 1, BIRMINGHAM CITY 0

Bolton Wanderers: Hopkinson; Hartle, Banks; Stanley, Higgins, Edwards; Birch, Stevens, Lofthouse, Parry, Holden.

Birmingham City: Merrick; Hall, Green; Larkin, Sissons, Neal; Astall, Orritt, Brown, Murphy, Hooper.

Referee: E. R. Hill (Chester).

Scorer: Lofthouse.

FOOTBALL COMBINATION LEAGUE

BIRMINGHAM CITY RESERVES 2, LUTON TOWN RESERVES 1

(Abandoned after 84 minutes)

Birmingham City Reserves: Schofield; Farmer, Devine; Mullett, Watts, Penzer; Hellawell, Fume, Houghton, Jones, Govan.

Luton Town Reserves: Marsh; Price, A'herne; McGuffie, Kelly, Hetherington; Whitby, Cullen, Gregory, Cummings, Legate.

Referee: A. Walters (Warwick).

Scorers: Govan and Houghton for Birmingham. Devine for Luton.

BIRMINGHAM AND DISTRICT LEAGUE, DIVISION II

SUTTON TOWN 1, BIRMINGHAM CITY "A" 1

(Abandoned after 78 minutes)

Sutton Town: Taylor; Lines, Bench; Horlick, Toussaint, Haycock; Watson, Roberts, Keogh, Sharples, Johnson.

Birmingham City "A": Withers; Kennea, Allen; Small, Louw, Wheelton; Birch, Harper, Hinton, Cochran, Boyd.

Referee: G. Pankhurst (Warwick).

Scorers: Keogh for Sutton. Birch for Birmingham.

## FOOTBALL AT ST. ANDREW'S

SATURDAY, MARCH 22nd

FOOTBALL COMBINATION

## SOUTHEND UNITED RESERVES

KICK-OFF 3 P.M.

## OUR VISITORS

Ground : Kenilworth Road.

Record Attendance : 28,433 v. Arsenal (Cup), March 1st, 1952.

Colours : White shirts.

Manager : Mr. "Dally" Duncan.

Last Season's Marksmen : Turner 30  
Brown, Cullen, Morton 5, Groves 4,  
Gregory 3, McLeod, Shanks, Legate,  
Pearce, Adam, Pemberton 1 each.

F.A. Cup : Turner 1, Davies 1.

### A WORTHY CAUSE

The Club wishes to thank the Committee and the Members of the Supporters Club for their help with the wonderful collection of £258 11s. 3d. in aid of the Manchester United Memorial Fund. Very many thanks also to those Supporters who gave so freely.

## SCORERS AND APPEARANCES

(Up to 8th March)

FIRST TEAM—Brown 30, Neal and Murphy 29, Smith 28, Hall and Merrick 27, Astall 26, Green and Govan 21, Watts 19, Kinsey and Orritt 15, Larkin 14, Farmer 13, Hooper 12, Newman 6, Schofield 5, Neale and Allen (G.) 4, Mullett 3, Houghton 2, Hellowell, Jones and Sissons 1.

GOAL SCORERS—Murphy 17, Brown 13, Kinsey and Orritt 5, Neal (R.) 4, Hooper and Astall 3, Govan 2, Watts, Hellowell and Neale (K.) 1.

SECOND TEAM—Sissons 25, Mullett and Hellowell 22, Allen (G.) and Jones 21, Schofield 20, Farmer, Cochrane and Cox 13, Larkin, Orritt and Houghton 12, Allen (R.) and Green 10, Kinsey, Govan and Devine 9, Withers and Hinton 8, Harper and Warmington 7, Newman and Abbott 6, Watts 5, Neale (K.) 4, Astall, Hall and Penzer 3, Neal (R.) and Hume 2, Green (D.) and Murphy 1.

GOAL SCORERS—Kinsey and Hellowell 7, Govan and Houghton 6, Cox, Cochrane and Jones 5, Astall 4, Hinton 3, Larkin, Orritt, Allen (R.) and Warmington 2, Harper, Murphy, Abbott, Penzer and Hume 1.


The 'Right Half' **M&B** at any time  
**EXPORT PALE ALE**  
for extra quality and strength...

## BIRMINGHAM CITY

CUT OUT AND KEEP THIS DISC  
15-3-58

	MERRICK	
HALL 2		GREEN 3
LARKIN 4	SMITH 5	NEAL 6
ASTALL 7	ORRITT 8	MURPHY 10
	BROWN 9	HOOPER 11

Referee :  
Mr. R. E. SMITH (Malpas)



Linesmen :  
Mr. J. FISHER (Red Flag)  
Mr. D. F. GREEN (Yellow Flag)

	GROVES 9	
GREGORY 11	CULLEN 10	TURNER 8
PACEY 6	OWEN 5	McGUFFIE 4
HAWKES 3		DUNNE 2

BAYNHAM

## LUTON TOWN

## BLACKPOOL

v

## BIRMINGHAM CITY

### CHEAP TRIP

SATURDAY, 22nd MARCH

TO

## BLACKPOOL

Return 16/6 Fare

BIRMINGHAM New Street	depart 10. 0 a.m.
BLACKPOOL SOUTH	arrive 12.45 p.m.
BLACKPOOL CENTRAL	arrive 12.50 p.m.

Return Same Day :-

Blackpool Central	depart 6. 0 p.m.
Blackpool South	depart 6. 5 p.m.

LIGHT REFRESHMENTS AVAILABLE

Further information from Stations and Official Railway Agents

BRITISH RAILWAYS

## SCREEN PROCESS PRINTING SPECIALISTS

POSTERS  
SHOWCARDS

DISPLAY

AND

## EXHIBITION WORK

CONSULT

## HENLEY PUBLICITY LTD

28-30 / BBEY STREET

BIRMINGHAM 18 Phone 6529  
NOR

## ADVERTISE HERE OR ON THE GROUND

For Rates Apply :-

P. & M. ADVERTISING SERVICE LTD.  
WHITE HOUSE, 111 NEW STREET, BIRMINGHAM 2

Telephone - MIDland 0961 & 5749

## Who's Who at Luton

**RON BAYNHAM** (goalkeeper), is a Birmingham-born player, who made the big-time via Worcester City, the Southern League club. Capped for England in 1955-56 against Ireland, Denmark and Spain. He is one of the reasons why the Bedford club are having one of their better seasons.

**SEAMUS DUNNE** (right-back), has been a consistent defender for Luton ever since he was signed from Shelbourne in 1950. He is an Eire international and for a long time was a regular member of the XI.

**KEN HAWKES** (left-back), took the place of Eire international Bud Aherne a short while ago. He didn't make an appearance in the first team last season.

**BOB MORTON** (right-half), "Mr. Utility" of the Luton side. He plays anywhere with equal success. He has been selected to tour Ghana with the F.A. party this coming summer. An England "B" international.

**TERRY KELLY** (centre-half), has recently taken over from Sid Owen, who is now trainer-coach to the club. The son of Tim Kelly, the Bedford Town manager, he joined the club in 1951 from Vauxhall Motors. A versatile defender, he has played in all three half-back positions.

**JOHN GROVES** (left-half), was formerly an inside forward. He is the son of a former Derby County player. He should now make the position his own following the transfer of Reg Pearce to Sunderland.

**JIMMY ADAM** (outside-right), was formerly an outside-left. Signed from the North-East club Spennymoor United in 1953. A fast raiding winger, he combines well with Turner and Brown.

**GORDON TURNER** (inside-right), Luton's leading goalscorer. He is a menace to defences. He has benefited undoubtedly from the inclusion of Allan Brown in the side. Born at Doncaster, he is yet another son of a former League player. Thought by many to be unlucky not to have gained representative honours.

**ALLAN BROWN** (centre-forward), is one of the game's unluckiest players, having missed two Cup Finals through injury. He is in the running for a place in Scotland's World Cup party—fitness permitting. He joined Luton Town from Blackpool nearly two seasons ago.

**GEORGE CUMMINGS** (inside-left), along with Brown is the only big money buy the club have made in recent years. He arrived at Kenilworth Road from Everton in 1953. He has been capped several times for Eire.

**GEORGE McLEOD** (outside-left), is fast making the position his own. He is keeping Scottish international Mike Cullen in the reserves. Last term he made 15 first team appearances.

**TONY GREGORY** (inside-left), is a capable young reserve. Last season he played 13 times for the first team. A product of Vauxhall Motors.



win draw or lose...  
they cheer  
**THE BLUES** .....

...and **Ansell's**  
The Better Beer

ANSSELLS BREWERY LTD., ASTON, BIRMINGHAM 6

## LEAGUE TABLES

	DIVISION I				Goals		
	P.	W.	L.	D.	F.	A.	P.
Wolves	31	21	4	6	79	37	48
Preston N.E.	32	19	8	5	79	44	43
W.B. Albion	31	14	5	12	74	53	40
Luton Town	33	17	12	4	59	46	38
Manchester C.	33	17	12	4	84	83	38
Manchester U.	30	15	8	7	74	52	37
Nottingham F.	33	15	13	5	64	50	35
Tottenham H.	32	14	11	7	71	68	35
Blackpool	32	14	12	6	61	52	34
Chelsea	32	13	12	7	72	66	33
Burnley	32	15	14	3	61	63	33
Bolton W.	32	13	12	7	56	66	33
Everton	32	10	11	11	50	54	31
Arsenal	32	13	15	4	58	66	30
Aston Villa	32	11	16	5	56	69	27
Birmingham City	32	9	14	9	55	76	27
Leicester City	33	10	18	5	70	86	25
Portsmouth	31	8	16	6	54	62	24
Leeds United	31	9	16	6	41	54	24
Newcastle U.	31	9	17	5	50	58	23
Sheffield W.	32	8	18	6	60	80	22
Sunderland	33	6	17	10	41	84	22

	DIVISION II				Goals		
	P.	W.	L.	D.	F.	A.	P.
West Ham U.	33	18	6	9	84	46	45
Charlton A.	33	19	9	5	81	57	43
Liverpool	34	16	10	8	65	41	40
Blackburn R.	32	14	7	11	56	41	39
Fulham	30	14	7	9	70	43	37
Stoke City	33	16	12	5	65	51	37
Sheffield U.	31	14	9	8	54	42	36
Huddersfield T.	33	11	8	14	53	51	36
Ipswich Town	33	13	10	10	68	58	34
Leyton Orient	31	15	12	4	73	64	32
Barnsley	32	12	10	7	59	54	33
Middlesbrough	32	13	12	4	63	64	32
Grimsby Town	32	14	14	4	65	60	32
Bristol Rovers	31	14	13	8	46	54	28
Cardiff City	30	10	12	8	53	65	28
Derby County	33	11	16	6	53	75	25
Rotherham	32	10	17	5	48	75	25
Doncaster R.	33	7	16	10	41	61	24
Bristol City	32	8	16	8	43	65	24
Notts County	32	9	18	5	35	60	23
Swansea Town	33	7	19	7	50	83	21
Lincoln City	31	5	17	9	35	68	19

### SUPPORTERS' CLUB NOTES

Birmingham City Supporters' Club have now moved into new headquarters at The 'New Inns' Bromsgrove Street, Birmingham. Telephone: MID 4052, where they are in residence every Thursday night 8 o'clock.

On March 29th the Executive Committee will entertain the Everton Supporters' Club at concert to be held at The Crown Hotel, Hill Street, Birmingham. Tickets 2/-, available at your local branch. All you supporters who made the trip to Everton remember the grand time you had, now come along and give them a welcome.

### BAND PROGRAMME

- MARCH—"The Conqueror" J. Moorhouse
- INTERMEZZO—"Aisha" J. Lindsey
- SELECTION—"Arcadians" C. Monkton
- VALSE—"The Veleta" arr. H. Talbot
- SELECTION—"Milestone of Melody" arr. G. Mackenzie

### INTERVAL

- "The Middy"
- "Thin Red Line"

### CONCLUSION

- "Viscount Nelson"
- "The Volunteer"

### AND A VERY KIND THOUGHT

A number of our supporters travelling to Manchester for our game at Maine Road on March 5th decided to make a collection en route for the Munich Disaster Fund. The Secretary of Manchester City, Mr. W. Griffiths, acknowledges the sum of £5 13s. 8d. which he has handed over to this deserving fund.

## LUTON TOWN'S RECORD TO DATE

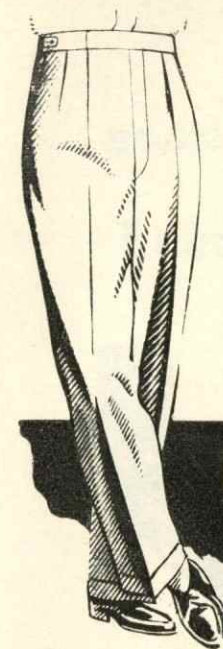
Aug. 24	Bolton Wanderers	..	(H)	1-0
" 26	Blackpool	..	(A)	2-1
" 31	Arsenal	..	(A)	0-2
Sept. 4	Blackpool	..	(H)	2-0
" 7	Wolverhampton W.	..	(H)	3-1
" 11	Leeds United	..	(A)	1-1
" 14	Aston Villa	..	(A)	0-2
" 21	Everton	..	(H)	0-1
" 28	Sunderland	..	(A)	0-3
Oct. 5	Burnley	..	(H)	3-2
" 12	Preston North End	..	(A)	0-1
" 19	Sheffield Wednesday	..	(H)	2-0
" 26	Manchester City	..	(A)	2-2
Nov. 2	Birmingham City	..	(H)	3-0
" 9	Chelsea	..	(A)	3-1
" 16	Newcastle United	..	(H)	0-3
" 23	Tottenham Hotspur	..	(A)	1-3
" 30	Nottingham Forest	..	(H)	3-1
Dec. 7	Portsmouth	..	(A)	0-5
" 14	West Bromwich Albion	..	(H)	5-1
" 21	Bolton Wanderers	..	(A)	2-1
" 25	Manchester United	..	(A)	0-3
" 26	Manchester United	..	(H)	2-2
" 28	Arsenal	..	(H)	4-0
Jan. 11	Wolverhampton W.	..	(A)	1-1
" 18	Aston Villa	..	(H)	3-0
Feb. 1	Everton	..	(A)	2-0
" 8	Sunderland	..	(H)	7-1
" 15	Burnley	..	(A)	2-1
" 22	Preston North End	..	(H)	1-3
Mar. 1	Sheffield Wednesday	..	(A)	1-2
" 8	Manchester City	..	(H)	1-2
			(F.A. Cup)	
Jan. 4	Stockport County	..	(A)	0-3

# KEY TO SCORE BOARD

A	PRESTON NORTH END v. LEEDS UNITED	..	..	..	..
B	SHEFFIELD WEDNESDAY v. BOLTON WANDERERS	..	..	..	..
C	NOTTINGHAM FOREST v. WOLVERHAMPTON WANDERERS	..	..	..	..
D	PORTSMOUTH v. ASTON VILLA	..	..	..	..
E	NEWCASTLE UNITED v. LEICESTER CITY	..	..	..	..
F	TOTTENHAM HOTSPUR v. SUNDERLAND	..	..	..	..
G	MANCHESTER CITY v. ARSENAL	..	..	..	..
H	WEST BROMWICH ALBION v. EVERTON	..	..	..	..
I	CHELSEA v. BLACKPOOL	..	..	..	..
J	BRIGHTON & HOVE ALB. RES. v. BIRMINGHAM CITY RES.	..	..	..	..
K	BURNLEY v. MANCHESTER UNITED	..	..	..	..
L	COVENTRY CITY v. QUEENS PARK RANGERS	..	..	..	..
M	WALSALL v. EXETER CITY	..	..	..	..
N	CHARLTON ATHLETIC v. SWANSEA TOWN	..	..	..	..
O	STOKE CITY v. BLACKBURN ROVERS	..	..	..	..
P	DONCASTER ROVERS v. FULHAM	..	..	..	..
R	LEYTON ORIENT v. DERBY COUNTY	..	..	..	..
S	HUDDERSFIELD TOWN v. WEST HAM UNITED	..	..	..	..

## FIXTURE LIST, 1957-58

FIRST DIVISION					FOOTBALL COMBINATION					
Date	Name of Club	Gr.	F.	A.	Date	Name of Club	Gr.	F.	A.	
1957										
Aug. 24	Aston Villa	..	H	3-1	Aug. 24	Leyton Orient	..	A	0-1	
28	Nottingham Forest	..	A	1-1	28	Swansea Town	..	H	2-2	
31	Chelsea	..	A	1-5	31	Northampton Town	..	H	3-2	
Sept. 4	Nottingham Forest	..	H	0-2	Sept. 5	Swansea Town	..	A	0-2	
7	Newcastle United	..	H	1-4	7	Brentford	..	A	2-3	
11	Tottenham Hotspur	..	H	0-0	14	Charlton Athletic	..	H	2-2	
14	Burnley	..	A	1-3	21	Watford	..	A	1-0	
18	Tottenham Hotspur	..	A	1-7	28	Millwall	..	H	5-0	
21	Preston North End	..	H	3-1	Oct. 2	Leicester City	..	A	1-2	
28	Sheffield Wednesday	..	A	3-5	5	Crystal Palace	..	A	3-1	
Oct. 1	West Bromwich Albion	..	A	0-0	19	Southampton	..	A	1-3	
5	Manchester City	..	H	4-0	26	Luton Town	..	A	3-2	
12	Wolverhampton W.	..	H	1-5	Nov. 2	Brighton & Hove A.	..	H	1-2	
19	Arsenal	..	A	3-1	9	Southend United	..	A	4-1	
26	Bolton Wanderers	..	H	5-1	16	Arsenal	..	A	0-2	
Nov. 2	Luton Town	..	A	0-3	23	Bristol Rovers	..	A	2-3	
9	Sunderland	..	H	2-3	30	Plymouth Argyle	..	H	3-3	
16	Everton	..	(1)	A	2-0	Dec. 7	West Ham United	..	A	2-4
23	Blackpool	..	H	0-0	14	Fulham	..	A	1-5	
30	Leeds United	..	A	1-1	21	Leyton Orient	..	H	4-1	
Dec. 7	Manchester United	..	(2)	H	3-3	26	Coventry City	..	A	0-0
14	Leicester City	..	A	2-2	28	Northampton Town	..	A	2-3	
21	Aston Villa	..	A	2-0	1958					
26	West Bromwich Albion	..	A	3-5	Jan. 4	Cardiff City	..	H	2-3	
28	Chelsea	..	H	3-3	11	Brentford	..	H	3-2	
1958					18	Charlton Athletic	..	A	1-6	
Jan. 8	York City	..	A	0-3	Feb. 1	Watford	..	H	2-1	
11	Newcastle United	..	A	2-1	8		..	H	5-2	
18	Burnley	..	H	2-3	15	Crystal Palace	..	H	5-1	
Feb. 1	Preston North End	..	A	0-8	22	Ipswich Town	..	A	1-2	
22	Wolverhampton W.	..	A	1-5	Mar. 1	Southampton	..	A		
Mar. 1	Arsenal	..	(6)	H	15	Brighton & Hove A.	..	A		
5	Manchester City	..	A	1-1	22	Southend United	..	A		
8	Bolton Wanderers	..	A	0-1	29	Arsenal	..	A		
12	Sheffield Wednesday	..	H		April 4	Tottenham Hotspur	..	A		
15	Luton Town	..	H		5	Bristol Rovers	..	H		
22	Blackpool (S.F.)	..	A		7	Tottenham Hotspur	..	A		
29	Everton	..	H		12	Plymouth Argyle	..	A		
April 4	Portsmouth	..	A		14	Coventry City	..	H		
5	Sunderland	..	A		19	West Ham United	..	A		
7	Portsmouth	..	H		23	Ipswich Town	..	A		
12	Leeds United	..	H		26	Fulham	..	A		
19	Manchester United	..	A		28	Cardiff City	..	H		
26	Leicester City	..	H			Luton Town	..	A		
						To be arranged				



# FOSTRIAN Supaslaks

Cut and tailored in our own workrooms from Yorkshire all wool cloths, Supaslaks give you style and quality at the lowest possible price. They're your best buy to-day.

★ 1 STAR      ★★ 2 STAR      ★★★ 3 STAR  
**55/-    65/-    75/-**

One of the many outstanding values in clothing obtainable only at

## Foster Brothers

MEN'S, YOUTHS' AND BOYS' OUTFITTERS SINCE 1876

Branches nearest the ground

254/8 COVENTRY ROAD      5/7 ALBERT STREET  
 88 LOZELLS ROAD      158 HIGH STREET      114-118 HIGH STREET      235 HAWTHORN ROAD  
 LOZELLS      ASTON      ERDINGTON      KINGSTANDING  
 and BRANCHES THROUGHOUT BIRMINGHAM and DISTRICT

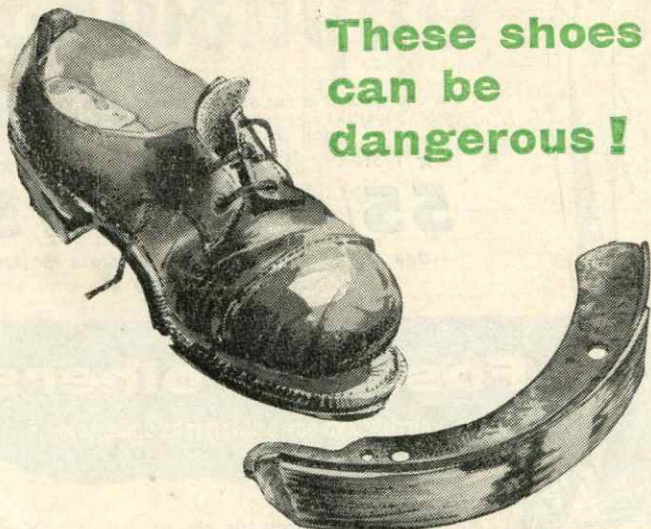
## Quality Electrical Equipment

# LUCAS

FOR CARS, COMMERCIAL VEHICLES, MOTOR CYCLES AND CYCLES.



JOSEPH LUCAS LTD · BIRMINGHAM 19



**These shoes  
can be  
dangerous !**

***When did you last see the brake shoes on your car?***

Maybe you'd worry more if you *could* see them; you'd worry about your life, perhaps—and your family's. You can't afford to forget... **ACT NOW**

**ASK YOUR LOCAL  
GARAGE ABOUT GIRLING FACTORY  
LINED REPLACEMENT SHOES**

**GIRLING**  
THE BEST BRAKES IN THE WORLD

GIRLING LIMITED · KINGS RD · TYSELEY · BIRMINGHAM 11

J 3931