

LEAGUE CHAMPIONS 1954-55



# Chelsea Football Club

Stamford Bridge Grounds, London SW6

FOOTBALL LEAGUE—DIVISION I

SEASON 1957-58

## CHELSEA v LUTON TOWN

Saturday, 9th November, 1957

Kick-off 3 p.m.



Official Programme

6<sup>d</sup>

The right of admission to grounds  
is reserved.



# 

### 

1957	Opponents	Venue	F.A.
Aug. 24	Tottenham Hotspur ...	Away	1-1
" 28	MANCHESTER CITY ...	HOME	2-3
" 31	BIRMINGHAM CITY ...	HOME	5-1
Sept. 4	Manchester City ...	Away	2-5
" 7	Everton ...	Away	0-3
" 11	WEST BROM. A. ...	HOME	2-2
" 14	Newcastle United ...	Away	3-1
" 18	West Bromwich A. ...	Away	1-1
" 21	BURNLEY ...	HOME	6-1
" 28	Preston North End ...	Away	2 5
Oct. 5	SHEFFIELD WED ...	HOME	1-0
" 12	ASTON VILLA ...	HOME	4-2
" 19	Wolverhampton W. ...	Away	1-2
" 26	ARSENAL ...	HOME	0-0
Nov. 2	Blackpool ...	Away	1-2
" 9	LUTON TOWN ...	HOME	.....
" 16	Sunderland ...	Away	.....
" 23	LEICESTER CITY ...	HOME	.....
" 30	Bolton Wanderers ...	Away	.....
Dec. 7	LEEDS UNITED ...	HOME	.....
" 14	Manchester United ...	Away	.....
" 21	TOTTENHAM H. ...	HOME	.....
" 25	PORTSMOUTH ...	HOME	.....
" 26	Portsmouth ...	Away	.....
" 28	Birmingham City ...	Away	.....

1958	Opponents	Venue	F.A.
Jan. 4	(3) F.A. Cup	HOME	.....
" 11	EVERTON ...	HOME	.....
" 18	NEWCASTLE UTD. ...	HOME	.....
" 25	(4) F.A. Cup	HOME	.....
Feb. 1	Burnley ...	Away	.....
" 8	PRESTON N.E. ...	HOME	.....
" 15	(5) Sheffield Wednesday	Away	.....
" 22	Aston Villa ...	Away	.....
Mar. 1	(6) W'HAMPTON W. ...	HOME	.....
" 8	Arsenal ...	Away	.....
" 15	BLACKPOOL ...	HOME	.....
" 22	(SF) Leicester City ...	Away	.....
" 29	SUNDERLAND ...	HOME	.....
Apr. 4	NOTTS. FOREST ...	HOME	.....
" 5	Luton Town ...	Away	.....
" 7	Nottingham Forest ...	Away	.....
" 12	BOLTON WAN. ...	HOME	.....
" 19	Leeds United ...	Away	.....
" 26	MANCHESTER U. ...	HOME	.....
May 3	F.A. CUP FINAL	HOME	.....

(3), (4), (5), (6), (SF)—indicates F.A. Cup dates

### 

1957	Opponents	Venue	F.A.
Oct. 15	(1) FULHAM	HOME	1-2

### 

1957	Opponents	Venue	F.A.
Aug. 18	AJAX ...	Amsterdam	4-2
Nov. 7	C.D.S.A. Moscow ...	HOME	.....
" 12	BEOGRADSKI, Belgrade	HOME	.....

### 

1957	Opponents	Venue	F.A.
Aug. 24	BOURNEMOUTH ...	HOME	4-0
" 28	Norwich City ...	Away	2-0
" 31	Bristol City ...	Away	3-1
Sept. 4	NORWICH CITY ...	HOME	4-1
" 7	COVENTRY CITY ...	HOME	2-1
" 14	Portsmouth ...	Away	1-1
" 18	CARDIFF CITY ...	HOME	7-0
" 21	Leyton Orient ...	Away	2-3
" 28	CRYSTAL PALACE ...	HOME	5-1
Oct. 2	NORTHAMPTON T. ...	HOME	7-0
" 5	Plymouth Argyle ...	Away	6-0
" 7	(1) Charlton A. (L.C. Cup)	Away	1-3
" 12	Queen's Park Rangers	Away	2-0
" 19	SWANSEA TOWN ...	HOME	7-0
" 26	Brighton & Hove A. ...	Away	4-0
Nov. 2	MILLWALL ...	HOME	2-0
" 9	Swindon Town ...	Away	.....
" 16	WEST HAM UTD. ...	HOME	.....
" 23	Luton Town ...	Away	.....
" 30	LEICESTER CITY ...	HOME	.....
Dec. 7	Southampton ...	Away	.....
" 14	BRISTOL ROVERS ...	HOME	.....
" 21	Bournemouth & Bos...	Away	.....
" 25	Reading ...	Away	.....
" 26	READING ...	HOME	.....
" 28	BRISTOL CITY ...	HOME	.....

### 

The records which you hear today have been kindly provided by and can be obtained from Dawson Bros., 16, Fulham High Street, S.W.6.

1958	Opponents	Venue	F.A.
Jan. 4	BRENTFORD ...	HOME	.....
" 11	Coventry City ...	Away	.....
" 25	Ipswich Town ...	Away	.....
Feb. 1	LEYTON ORIENT ...	HOME	.....
" 8	Crystal Palace ...	Away	.....
" 15	PLYMOUTH A. ...	HOME	.....
" 22	QUEEN'S PARK R. ...	HOME	.....
Mar. 1	Swansea Town ...	Away	.....
" 8	BRIGHTON & H.A. ...	HOME	.....
" 15	Millwall ...	Away	.....
" 22	SWINDON TOWN ...	HOME	.....
" 29	West Ham United ...	Away	.....
Apr. 5	LUTON TOWN ...	HOME	.....
" 7	Cardiff City ...	Away	.....
" 12	Leicester City ...	Away	.....
" 19	SOUTHAMPTON ...	HOME	.....
" 26	Bristol Rovers ...	Away	.....

### 

1957	Opponents	Venue	F.A.
Sept. 28	(P) GRAY'S ATH. ...	HOME	12-0
Oct. 19	(1) WOODFORD Y.C. ...	HOME	14-0
" 29	(2) Q.P.R. ...	HOME	4-0

### 

1957	Opponents	Venue	F.A.
Nov. 11	(1) Crystal Palace ...	Away	.....



League Champions 1955

## 

FOUNDED 1905

CLUB COLOURS:

Shirts: Royal Blue (White Collars). Knickers: White  
Stockings: Black, Blue and White Tops

Registered Address: STAMFORD BRIDGE GROUNDS, FULHAM ROAD,  
LONDON, S.W.6. [FUL 5545]

PRESIDENT: The Right Hon. Earl Cadogan, M.C.

BOARD OF DIRECTORS:

J. H. Mears (CHAIRMAN), C. J. Pratt (VICE-CHAIRMAN),  
L. J. Mears, L. R. Withey, J. G. Bennett.

MANAGER: E. J. Drake. SECRETARY: J. Battersby. TRAINER: J. Oxberry

## 

WELCOME to our friends from Luton. After the excitements of the International on Wednesday and our own Russian game on Thursday evening it is a pleasant thing to be back in a game against a team whom we met for the first time in a League match only two seasons ago.

After a most interesting and well fought out battle at Bloomfield Road, it was only by the odd goal that we succumbed to Blackpool. They opened in a brisk manner and in the first half-hour we saw Reg Matthews in absolute brilliance. Yet it was in this period that in our break-aways we were always the more dangerous and although Blackpool had more of the play, it was we who went into the lead when Jimmy Greaves finished off a very good movement.

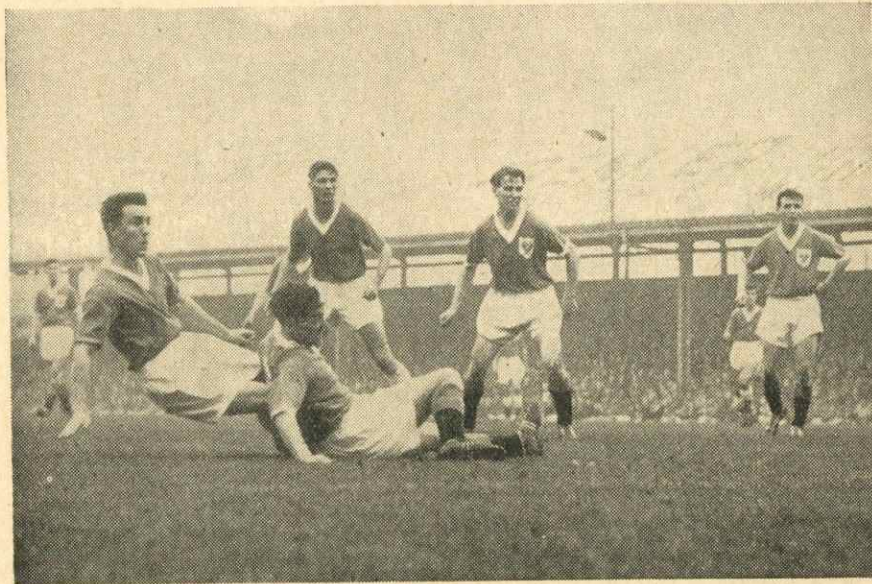
The irony of this game is that in the second half we had the better of the exchanges, yet in similar circumstances to ourselves in the first half, Blackpool scored two goals. However, I must give our forwards full credit for carrying on with the fight and it was only through misfortune that Jimmy Greaves did not put us on equal terms when with less than a minute to go he made a cross with his head which struck the under part of the bar and rebounded into play.

The Combination side seems to go from strength to strength and although the final result was only 2-0 it was a good win and we should like to congratulate Millwall on the excellent form they displayed throughout an interesting game.

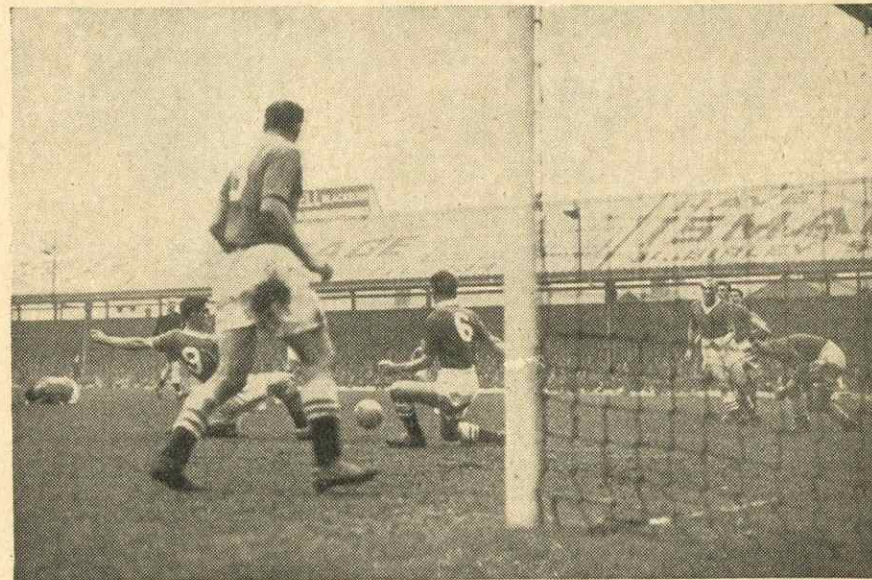
Our other sides were also successful. Our Third team came away from Brighton with a 5-2 victory. "The Babes" continued their winning way in the South-East Counties League. The two Barry's—Bridges and Smart—have been selected for London v. Middlesex on the 20th November. I wish them a good game.



## GREAVES SCORES THE FIRST



Jimmy Greaves scores our goal in the first half, but it didn't look possible with Kelly blocking the way.



Durie (hidden) scores Blackpool's first goal after Saunders had blocked Mudie's shot.

## GOAL AT BLACKPOOL



Peter Sillett tries a desperate goal-keeping save in a vain attempt to stop Blackpool's second goal.



Mudie tries a shot but the ball goes over the bar.



## OUR VISITORS TODAY

TODAY we welcome Luton Town to Stamford Bridge for the third time since the war. Last season we defeated the Hatters 4-1, and naturally hope that the two points at stake will be ours again this time.

Judging by Luton's performances to date, however, victory will not be easily gained, for, compared with a year ago, their rearguard has shown a vast improvement. Prior to their home match with Birmingham City last Saturday, they had not conceded more than three goals in any game, and that only once. On the credit side they had kept the opposition from scoring at all on four occasions.

Their hopes of keeping up a strong challenge to the leading teams, suffered a series of setbacks a few weeks ago, when they collected only a solitary point from four matches, and scored only one goal in the process.

In their first fourteen engagements, Luton had obtained 18 goals, of which exactly half had come from the feet or head of inside-right Gordon Turner, again well on the way to becoming their leading marksman for what would be the fifth consecutive season—a wonderful record.

Top priority for Manager "Dally" Duncan is to find another forward to take some of the onus for scoring off Turner's capable shoulders. In the hope of effecting some improvement, he has recently tried former Blackpool player, Allan Brown as leader of the attack. The burly Scot is settling down well there, and it could be that he will solve the problem, for he had a fine scoring record with the Lancashire club.

The retirement of Bernard Stretton has left Ron Baynham as first-choice goalkeeper, though he is being strongly challenged by Eddie Marsh, a close-season acquisition from Charlton. Birmingham-born, Baynham is making sure that Marsh has to wait for his chance in the senior side, with some top-class performances.

An injury sustained by Seamus Dunne at Manchester City a fortnight ago may keep him out of the Luton line-up today. If he is absent, his loss will be a heavy blow to the Hatters, for, as always, he has been among their most consistent performers. A native of Wicklow, Dunne arrived at Kenilworth Road from Shelbourne seven years ago. Other claimants for Dunne's place are fellow-Irishmen Thomas "Bud" Aherne and Brendan McNally. Aherne joined Luton from

Belfast Celtic a year before Dunne, and McNally was a recruit from Shelbourne in the summer of 1956.

The form displayed by Leslie Jones in the past three months has made many an opposing winger wish that he was still in the second team, where he has spent much of his time with Luton. The powerful six-footer from Mountain Ash must be well in the running for Welsh international honours in the future.

Now back in his usual berth in the middle line, after one of his numerous spells as leader of the attack is Bob Morton. Born at Aston Clinton in Buckinghamshire, Morton is an England "B" international, and has been on reserve for the full national side, the only rewards he has gained for much brilliant service in Luton's cause in the last ten years.

Tall and cultured Syd Owen, like Morton unlucky not to have been honoured by his country more frequently, is still among the game's outstanding centre-halves. He was once a wing-half on the books of his native Birmingham City.

From reserve forward to possible future international at left-half has been the experience of Liverpool-born Reg Pearce. He was switched to the intermediate line midway through last season, and this term has reached Football League representative status, playing against the League of Ireland last month.

In recent weeks there have been three Scots in the Hatters' front line, among them Jimmy Adam, who, as in the past, has shown himself to be equally proficient on either flank of the attack. Born in Glasgow, Adam actually joined Luton from Spennymoor United four years ago.

The son of a former Hull City winger, Gordon Turner hails from Doncaster, and began his career with the Hatters as a wing-half. Just how inspired was the move which took him into the forward line has been shown by his scoring record in the past few years.

Much-injured in the service of Blackpool, Allan Brown has, happily, managed to steer clear of serious damage in the comparatively short time he has spent with the Hatters. A Scottish international from Fife, Brown cost Blackpool a huge fee when recruited from East Fife seven years ago. He joined the Kenilworth Road staff in February last, celebrated his debut for them with a goal, and has been scoring regularly, if not prolifically, ever since.

(continued on page 7)

## The Talk of Stamford Bridge

WE offer Jimmy Greaves our best congratulations on a very speedy rise to fame. Little over two months ago he had not appeared in a League match, yet, last Wednesday at Wembley, he was England's reserve against Ireland. He was very nearly a member of the team and on Tuesday evening he was standing by to play if Taylor failed a fitness test on Wednesday morning.

If Greaves had played he would have become the youngest-ever player to wear an England shirt, as he was only born on 20th February, 1940, and was only 17 years and 260 days old last Wednesday. The record-holder is Duncan Edwards of Manchester United, who was only 18½ years old when he played for England against Scotland at Wembley in 1955.

The draw for the First Round of the F.A. Cup last Tuesday shows how near we are to the Third Round draw when all the First and Second Divisions go into the hat. Our luck in the F.A. Cup since Mr. Drake became manager in 1952 has not been very marked as far as home cup-ties are concerned and we cannot help but feel that a home game is well overdue. Only twice in the last three seasons have we been fortunate enough to be drawn in front of our own supporters, but in 1956 we did gain a replay game at Stamford Bridge against Burnley.

It is interesting to recall that Luton Town visited us on 17th November last season and the game marked Reg Matthews' first appearance as a Chelsea player.

British Railways announce the following excursion train arrangements for our League game against Bolton Wanderers on Saturday, 30th November. Tickets (32/6d. each, return) can be obtained at Euston and will be available by the following trains:

Leave Euston 8.45 a.m.  
Arrive Manchester (London Road) 12.45 p.m.  
Leave Manchester (London Road) 11.55 p.m.

Arrive Euston 5.24 a.m.

(Sunday morning)

Passengers travel by ordinary trains between Manchester (Victoria) and Bolton.

We would take this chance of reminding our supporters that our Junior team meets Crystal Palace Juniors at Selhurst Park in the First Round of the Southern Junior Floodlight Cup on Monday evening, 11th November (kick-off 7.30 p.m.).

### LEADING GOALSCORERS

#### DIVISION I

ALLEN (West Bromwich Albion) .....	13
DEELEY (Wolves) .....	13
MURRAY (Wolves) .....	11
TURNER (Luton) .....	11
BARRETT (Nottingham Forest) .....	10
TAYLOR, T. (Manchester United) .....	10
WHELAN (Manchester United) .....	10
BAIRD (Leeds United) .....	9
CURRY (Newcastle) .....	9
HAYES (Manchester City) .....	9
HERD (Arsenal) .....	9
TINDALL (Chelsea) .....	9
WILSON (Nottingham Forest) .....	9
BARLOW (Manchester City) .....	8
FINNEY, T. (Preston N.E.) .....	8
LOFTHOUSE (Bolton Wanderers) .....	8
McPARLAND (Aston Villa) .....	8
THOMPSON T. (Preston N.E.) .....	8

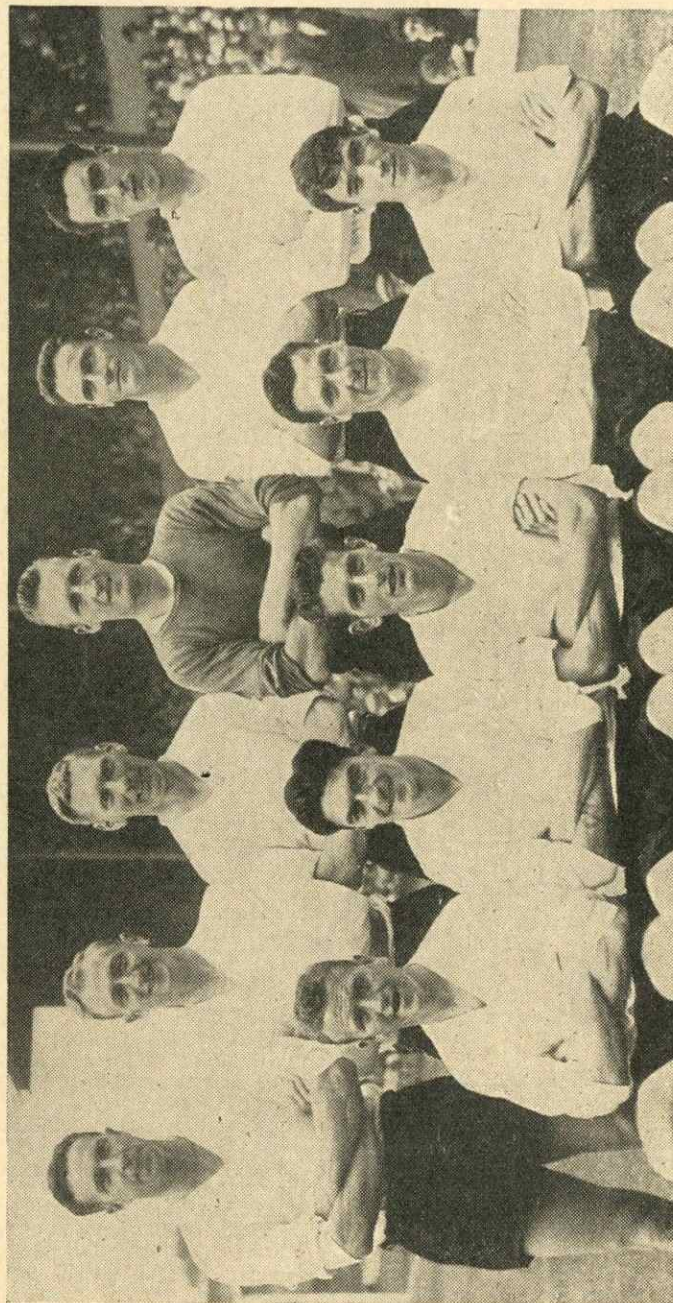
Our Visitors Today (continued from page 6)

In the first four games in which George Cummins was in the side, Luton scored seven times, compared with only one in a similar number previously. Such a leap in the scoring rate serves to amply demonstrate Cummins' value as a provider of chances. A costly recruit from Everton four years ago, Cummins, a native of Dublin, has completely shaken off the effects of several injuries sustained with Luton, the most serious of them necessitating a cartilage operation.

George McLeod made his bow in Luton's senior side last season, his first with the club, as a centre-forward. Now he is firmly established on the left wing in an ever-improving partnership with Cummins. McLeod, who comes from Inverness, joined the Hatters' payroll from Scottish junior football.



# LUTON TOWN 1957-58



Standing: R. Morton, S. Dunne, S. Owen, R. Baynham, L. Jones, R. Pearce. Seated: M. Cullen, G. Turner, J. Groves, A. Brown, J. Adam.

## CHELSEA

Colours—Shirts: Royal Blue (White Collars). Knickers: White. Stockings: Black, Blue and White Tops.

1. (Goal)  
**Matthews**

2. (Right-back)  
**Whittaker**

3. (Left-back)  
**Sillett (P.)**

4. (Right-half)  
**Nicholas (B.)**

5. (Centre-half)  
**Mortimore**

6. (Left-half)  
**Saunders**

7. (Outside-right)  
**Brabrook**

8. (Inside-right)  
**Greaves**

9. (Centre-forward)  
**Tindall**

10. (Inside-left)  
**Nicholas (A.)**

11. (Outside-left)  
**Block**

*Referee:*  
**Mr. W. HICKSON**  
(Wigan, Lancs.)



*Linesmen:*  
**Mr. C. A. BROWNLOW**  
(West Earlham, Norfolk)  
[Red Flag]  
**Mr. K. E. LAFLIN**  
(Stowmarket)  
[Yellow Flag]

**McLeod**  
11. (Outside-left)

**Cummins**  
10. (Inside-left)

**Brown**  
9. (Centre-forward)

**Turner**  
8. (Inside-right)

**Adam**  
7. (Outside-right)

**Pearce**  
6. (Left-half)

**Owen**  
5. (Centre-half)

**Morton**  
4. (Right-half)

**Jones**  
3. (Left-back)

**Dunne**  
2. (Right-back)

**Baynham**  
1. (Goal)

## LUTON TOWN

Colours—Shirts: White. Knickers: Black. Stockings: Black, White Tops.

Changes may be made as a result of the match on Thursday evening.



## THIS AND THAT

By TRUE BLUE

# Bringing on The Boys is a Man's Job— with Difficulties and Delights

BY the natural order of things, the big football clubs pass through varying stages and phases. There are ups and downs, times of trouble and times of triumph, with the delightful and the difficult thrown in. We can't pick on Chelsea—or Luton Town—as exceptions to this general course.

Without going very deeply into the matter, however, I would have said, off-hand, that in the fifty odd years of life in big football Chelsea had run through the whole rigmarole of experiences. But it now seems that I was wrong to come to such a conclusion. Long as I have been connected with the club, I can't recall the time when the Stamford Bridge brigade has been given so much attention in one particular direction. This relates to young players on the staff.

Let it be said quickly that many less pleasing problems have had to be faced from time to time than that with which the club is linked in these days. The results of the matches, and the League table placing remain important, but for the time being, in the minds of quite a number of people the returns seem to have been pushed into the background to a considerable extent.

No sooner have those who write about football dealt with the games each week-end—and even in the course of dealing with them—than they turn to what apparently strikes them as an important topic: the present and the future in relation to our young players.

## Learning By Watching

Into all the talk come, for example, the names of our right wing pair, Peter Brabrook and Jimmy Greaves, with one over-riding question mark attached. Should they go racing ahead, or should they be allowed to progress with the brakes on, as one might put it.

On the one side are writers, and thinkers, who argue that they should both have been in the England team which

played in the match against Ireland the other day. On the opposite side are the folk who have no hesitation in declaring themselves with those who believe that in the general interests of the game—and of the players themselves—they should be held back.

I have no intention of taking sides in such arguments. For the time being let it suffice that it is good to have players concerned in such discussions. It is certainly something new, in the Chelsea story, that such a young player as Jimmy Greaves should be on the fringe of the England team—if that is the correct way to describe his selection as the twelfth man. Will he be a better footballer for the experience of watching the stars wearing the England shirts doing their stuff?

Whatever the answer to that and other questions connected with the development of young players, there can be no doubt that it is a ticklish job, with times of rejoicing and sorrowing mixed. From the moment the lads start to climb the ladder they have to be most carefully watched lest they should fall off.

Nor is it a one man job. What are often called the back room boys come into it. Here a note may be made of a connecting link between Chelsea and today's opposing club. Thirty years ago we got from Luton Jimmy Thompson, who took the centre-forward position, with Andy Wilson going over. He performed the goalscoring part with distinction, netting twenty-five in one season.

## A Bunch From Luton

By the way, getting centre-forwards from Luton became almost a Chelsea habit. In due course came Joe Payne, with a record of ten goals in his first Football League match as a centre-forward part of the recommendation. He was followed in due course by Hugh Billington.

The point about the first of the batch of forwards who came to the Bridge from

Luton, is that Jimmy Thompson is now one of the back room boys who can mean such a lot to a club, but about whom we hear so little. His job is to sift the young players of promise: to get their feet firmly fixed on the ladder.

Manchester United have built their good side the hard way. Manager Matt Busby has told us that in one season his scouts and talent searchers watched more than five thousand youngsters. Of these around three hundred were thought promising enough to be invited for trials. Eventually less than a dozen were deemed good enough for grooming. The number who made the grade was even smaller.

Right through the job of picking for development purposes must run the nightmare fear of letting slip a lad who proceeds to rise to the top with some other club. After all, even John Charles wasn't retained by the club which first gave him a trial.

The same story can be told of hundreds of players. A little while back, if memory serves, Wally Shanks had trial runs with Chelsea—as an outside-right. He went to Luton without making real progress here, and as a wing-half his appearances in the first team are getting on for the three hundred mark. He was there when Luton rose to the top class for the first time.

## How Duncan Did It

If it were a matter of time given to training: of care spent in coaching, with many other details added, the furrows would soon be smoothed away from the foreheads of those whose job it is to bring on the boys. The simple fact is that some of them go thus far and then, for one of several reasons, come to a full stop.

On the other hand there are some players who can do things—for lack of a more fitting phrase we call them born footballers—without any teaching: skills which others never master. Many individual instances could be cited by every follower of football. Let me be content with just one instance. It fits, partly because, this season especially many clubs have been experimenting with the short pass from a corner-kick rather than the customary lob into the middle.

Today we expected to renew acquaintance with the man now in charge of the

Luton team, to whom we used to refer, affectionately, in his playing days, as "Dally" Duncan. Part of his reputation as a left-winger was built with a method of taking corner-kicks which a coach might try for a long time to teach a young player without success.

He used the outside of his left foot to send across the accurate and troublesome in-swingers from the corner flag. That wasn't the only thing he could do so well and so naturally. Hughie Gallacher was in the same Scotland side, as the potential goalscorer, but it was Duncan who got both goals by which England were beaten at Hampden Park in 1935. With the outside of the same left boot which he used for corner-kicks Duncan beat the best of goalkeepers from the penalty spot.

Tricks and skills which to some players are as easy as shelling peas are beyond the capacity of other players. Without dwelling further on this subject, I leave you with this question. How much of the development of a young player is due to coaching, and how much depends on the player himself?

## Luton Town

Ground: Kenilworth Road.  
Colours: Shirts: White. Knickers: Black.  
Stockings: Black, White Tops.  
Attendance Record: 28,433 v. Arsenal  
(Cup) 8th March, 1952.  
Division II Runners-up: 1955.  
Division III (South) Champions: 1937.

## Chelsea v. Luton Town Past League Results

Season	Home	Away
1955-56	0-0	2-2
1956-57	4-1	4-0
1957-58	Today	April 5

## F.A. Cup

1926-27	Round 3 (Home)	...	...	4-0
1934-35	Round 3 (Home)	...	...	1-1
	Replay (Away)	...	...	0-2

## SUMMARY

	P	W	D	L	F	A	Pts
League: Home	2	1	1	0	4	1	3
Away	2	1	1	0	6	2	3
F.A. Cup	3	1	1	1	5	3	—
Total	7	3	3	1	15	6	—



# FOOTBALL LEAGUE—DIVISION I

	Home				Goals				Goals			
	P	W	D	L	F	A	W	D	L	F	A	Pts
Wolves	16	8	0	0	27	5	3	3	2	15	12	25
West Brom. Alb.	16	5	3	1	26	13	2	5	0	12	9	22
Preston	15	7	0	0	24	6	2	1	5	8	15	19
Man. Utd.	15	6	0	2	22	9	3	1	3	16	16	19
Everton	14	3	4	0	14	8	4	1	2	11	12	19
Arsenal	14	6	1	2	18	11	3	2	3	9	11	19
Luton Town	15	6	1	1	15	5	2	1	4	6	11	18
Nottm. Forest	15	3	1	3	14	9	5	0	3	16	14	17
Bolton	15	5	2	1	19	10	2	1	4	10	19	17
Man. City	15	6	1	0	22	9	2	0	6	14	31	17
Blackpool	14	4	1	3	18	13	3	0	3	8	10	15
Chelsea	15	4	2	1	20	9	1	2	5	11	20	14
Burnley	15	5	1	1	19	6	0	2	6	23	13	13
Tottenham	16	5	1	2	26	15	0	2	6	7	24	13
Birmingham	16	4	1	3	17	14	1	2	5	10	25	13
Leeds United	16	4	2	3	15	12	1	1	5	4	16	13
Portsmouth	15	3	2	2	14	11	2	0	6	11	17	12
Aston Villa	16	5	0	2	17	9	0	1	7	7	26	12
Newcastle	15	2	2	3	9	10	2	1	5	13	14	11
Sunderland	16	3	3	2	11	7	0	2	6	8	32	11
Leicester City	15	4	1	3	19	15	0	0	7	9	21	9
Sheffield Wed.	15	3	1	3	13	14	0	1	7	9	21	8

## Appearances

MATTHEWS	15	DICKS	6
SAUNDERS	15	ALLEN	5
BRABROOK	14	J. LEWIS	5
GREAVES	14	BELLETT	3
MORTIMORE	14	MENICHO	3
SILLETT (P.)	13	STUBBS	3
TINDALL	12	MACFARLANE	2
WHITTAKER	12	BERRY	1
BLACK	9	LAVERICK	1
NICHOLAS (A.)	9	LIVINGSTONE	1
NICHOLAS (B.)	8		

Goalscorers: Tindall 9, Greaves 7, Nicholas (A.) 6, Matthews 3, Brabrook 3, Black 2, Allen 1. Total 31.

## FOOTBALL COMBINATION

	P	W	D	L	F	A	Pts
CHELSEA	15	13	1	1	58	8	27
Tottenham Hotspur	15	10	3	2	38	13	23
Portsmouth	15	8	3	4	28	17	19
Bristol City	15	9	1	5	29	24	19
Leicester City	14	8	2	4	34	20	18
Ipswich Town	12	7	3	2	33	21	17
Luton Town	15	8	1	6	34	27	17
West Ham United	13	6	4	3	19	20	16
Swansea Town	15	6	4	5	22	28	16
Fulham	12	7	1	4	28	20	15
Leyton Orient	14	6	3	5	27	21	15
Arsenal	14	5	3	6	30	24	13
Charlton Athletic	12	5	3	4	31	27	13
Swindon Town	14	5	3	6	17	18	13
Bristol Rovers	15	5	3	7	21	24	13
Plymouth Argyle	15	6	1	8	29	34	13
Millwall	15	5	3	7	29	38	13
Cardiff City	13	5	3	5	17	29	13
Birmingham City	13	5	2	6	24	22	12
Crystal Palace	13	4	4	5	22	23	12
Brighton & Hove Albion	14	5	2	7	16	19	12
Reading	13	5	2	6	21	25	12
Watford	13	5	2	6	19	24	12
Brentford	14	4	4	6	22	30	12
Norwich City	15	5	1	9	26	48	11
Aldershot	14	4	3	7	16	33	11
Southampton	14	4	2	8	26	31	10
Southend United	14	4	2	8	19	24	10
Northampton Town	13	3	4	6	25	37	10
Queen's Park Rangers	13	4	1	8	22	32	9
Bournemouth & Boscombe	13	3	3	7	24	36	9
Coventry City	13	0	7	6	11	20	7

## Appearances

CASEY	15	CLISS	4
ROBERTSON	13	COMPTON	4
BELLETT	10	J. LEWIS	4
GIBBS	10	NICHOLAS (A.)	4
McNICHOL	10	SCOTT	3
SMITH (P.)	10	HARRISON	3
MacFarlane	9	SILLETT (J.)	3
LAVERICK	8	TINDALL	3
ALLEN	7	WHITTAKER	3
DICKS	7	HUXFORD	3
STUBBS	7	B. SMART	2
LIVINGSTONE	6	BERRY	1
FERGEY	5	COURT	1
NICHOLAS (B.)	5	LONG	1
BLACK	4		

Goalscorers: McNichol 10, Gibbs 10, Allen 9, Nicholas (A.) 6, Smith (P.) 6, Laverick 4, Stubbs 3, Black 2, Tindall 2, Cliss 2, Lewis 2, Casey 1, Compton 1. Total 58.

## METROPOLITAN LEAGUE

	P	W	D	L	F	A	Pts
Tonbridge	13	9	3	1	41	19	21
CHELSEA	10	7	2	1	24	10	16
Luton	10	5	3	2	28	20	13
Crawley	12	5	3	4	21	24	13
Hastings	10	5	2	3	27	21	12
Dunstable	11	4	4	3	24	20	12
West Ham	10	6	0	4	21	19	12
Dartford	10	5	2	3	23	23	12
Newbury	10	5	1	4	25	18	11
Bedford	10	4	2	4	22	22	10
Windsor	10	4	2	4	17	22	10
Headington	13	5	0	8	27	35	10
Haywards Heath	9	4	1	4	19	18	9
Didcot	12	3	3	6	27	27	9
Guildford	9	3	1	5	14	16	7
Eastbourne	12	3	0	9	18	34	6
Brighton	12	3	0	9	13	29	6
Fulham	9	1	1	7	11	25	3

## Appearances

BLACKLEY	9	COURT	4
B. BRIDGES	9	LAVERICK	4
MEDLOCK	9	DELLAR	2
CLISS	7	HARRISON	2
CUNNINGHAM	7	LEGG	2
FERGEY	7	LONG	2
HUXFORD	7	GIBBS	1
COMPTON	6	SCOTT	1
SHELLITO	6	SILLETT (J.)	1
SMITH (K.)	6	SMITH (P.)	1
WALL	6	B. SMART	1
BERRY	5	R. TAMBLING	1
ABREY	4		

Goalscorers: Cliss 5, Bridges 4, Laverick 4, Blackley 3, Harrison 3, Smith (K.) 2, Wall 2, Gibbs 1. Total 24.

## Chelsea v. Luton Matches Last Season

Saturday, 17th November.  
Beat LUTON TOWN (Home) 4-1. Half-time 2-0.  
Referee: Mr. B. A. E. Buckle (Peterborough).  
Attendance: 30,823.  
Team: Matthews; MacFarlane, Sillett (P.); Armstrong, Livingstone, Saunders; Brabrook, McNichol, Tindall, Nicholas (A.), Blunstone.  
Scorers: Nicholas 2, McNichol, Tindall.  
Saturday, 30th March.  
Beat LUTON TOWN (Away) 4-0. Half-time: 2-0.  
Referee: Mr. R. H. Mann (Worcester).  
Attendance: 15,065.  
Team: Robertson; Whittaker, Sillett (P.); Armstrong, Dicks, Saunders; Brabrook, Tindall, Allen, Stubbs, J. Lewis.  
Scorers: Lewis 2, Tindall 2.

## SOUTH-EAST COUNTIES LEAGUE

	P	W	D	L	F	A	Pts
Arsenal	10	8	0	2	38	14	16
CHELSEA	7	6	0	1	39	2	12
Charlton Athletic	9	6	0	3	32	22	12
Tottenham Hotspur	9	5	2	2	32	26	12
Bexley Heath	8	5	0	3	25	12	10
Portsmouth	8	5	0	3	23	15	10
Millwall	10	3	3	4	33	26	9
Watford	9	4	1	4	11	20	9
Crystal Palace	10	3	2	5	25	39	8
West Ham	8	3	0	5	20	18	6
Queen's Park Rangers	10	2	2	6	19	37	6
Fulham	7	2	1	4	10	21	5
Leyton Orient	8	2	0	6	16	30	4
Brentford	7	2	0	5	13	42	4
Southend	6	1	1	4	12	24	3

## SOUTH-EAST COUNTIES LEAGUE

	P	W	D	L	F	A	Pts
BRADBURY	7	WALL	3				
A. BUCHANAN	6	I. AGATE	2				
T. COX	6	HARRISON	2				
DELLAR	6	SCOTT	2				
HILLARY	6	SHELLITO	2				
P. CONROY	5	D. TIER	2				
LEGG	5	B. BRIDGES	1				
B. SMART	5	K. JONES	1				
R. TAMBLING	5	C. KELLY	1				
LONG	4	R. KINGSHOTT	1				
SMITH (K.)	4	T. RYMAN	1				

Goalscorers: Smith (K.) 8, Tambling 6, Buchanan 5, Cox 4, Dellar 4, Bridges 3, Wall 3, Bradbury 2, Conroy 1, Jones 1, Long 1, Harrison 1, Total 39.

## MATCH SUMMARIES

### FOOTBALL LEAGUE

Saturday, 26th October.  
Drew with ARSENAL (Home) 0-0.  
Referee: Mr. H. Webb (Leeds).  
Attendance: 66,007.  
Team: Matthews; Whittaker, Sillett (P.); Nicholas (B.), Mortimore, Saunders; Brabrook, Greaves, Tindall, Nicholas (A.), Block.

No goals—but what a thriller! A corner to us within seconds of the kick-off, a hefty shot from Sillett, a back-hook by Tindall—then to the other end, with corkscrew dribbles by Haverty and a Matthews leap-and-roll to take the ball at Holton's feet. Block tried a couple of shots but hit the side-netting, and Kelsey saved well from Tony Nicholas. Just before the interval three corners in as many minutes were well taken by our wingers but either Kelsey's hands or Dodgin's head dealt with them. In the 50th minute Tony Nicholas had a shot kicked off the line and it was a pity that Greaves, after twice tricking several Arsenal men, could not find the net. But perhaps the nearest we came to scoring was eight minutes from time when Sillett's free-kick, taken in our half, forced Kelsey to a fingertip save. Both teams gave everything and a point each was fair enough.

Saturday, 2nd November.  
Lost to BLACKPOOL (Away) 1-2. Half-time 1-0.  
Referee: Mr. E. R. Hill (Chester).  
Attendance: 17,817.  
Team: Matthews; Whittaker, Sillett (P.); Nicholas (B.), Mortimore, Saunders; Brabrook, Greaves, Tindall, Stubbs, Block.  
Scorer: Greaves.

Tindall, pouncing on a through pass, might have scored in our first attack but for a great save by Farm. Then Greaves beat three defenders and put in a shot—but it was over the bar. After a hectic spell in our own half, with Reg Matthews performing the impossible as usual, the ball went to the left wing, Block centred, and Greaves gave us the lead (32 min.) which despite all our opponents' craft and drive, we held till the interval. In the second half our Matthews dealt with shots from Peterson and Perry but there had to be one he couldn't stop—so hard was the pressure—and this came from Durie in the fiftieth minute. Four minutes later Reg parried a shot from Perry but the ball went to Peterson's feet—and it was 2-1 against us. With only seconds left, Greaves nodded in a ball that promised to give us a well-earned point—but it struck the bar.

### FOOTBALL COMBINATION

Saturday, 26th October.  
Beat BRIGHTON AND HOVE ALBION (Away) 4-0.  
Half-time: 2-0.  
Team: Robertson; MacFarlane, Bellett; Dicks, Livingstone, Casey; J. Lewis, McNichol, Allen, Gibbs, Harrison.  
Scorers: Gibbs 2, Allen, Lewis.

Saturday, 2nd November.  
Beat MILLWALL (Home) 2-0. Half-time: 1-0.  
Team: Robertson; MacFarlane, Bellett; Dicks, Livingstone, Casey; J. Lewis, McNichol, Allen, Gibbs, Laverick.  
Scorers: Lewis, Allen.

### METROPOLITAN LEAGUE PROFESSIONAL CUP (FIRST ROUND)

Saturday, 26th October.  
Beat DUNSTABLE TOWN (Away) 2-0. Half-time: 1-0.  
Team: Medlock; Shellito, Fergey; Huxford, Cunningham, Compton; Smith (P.), Cliss, B. Bridges, Blackley, Harrison.  
Scorers: Bridges, Smith (K.).

### METROPOLITAN LEAGUE

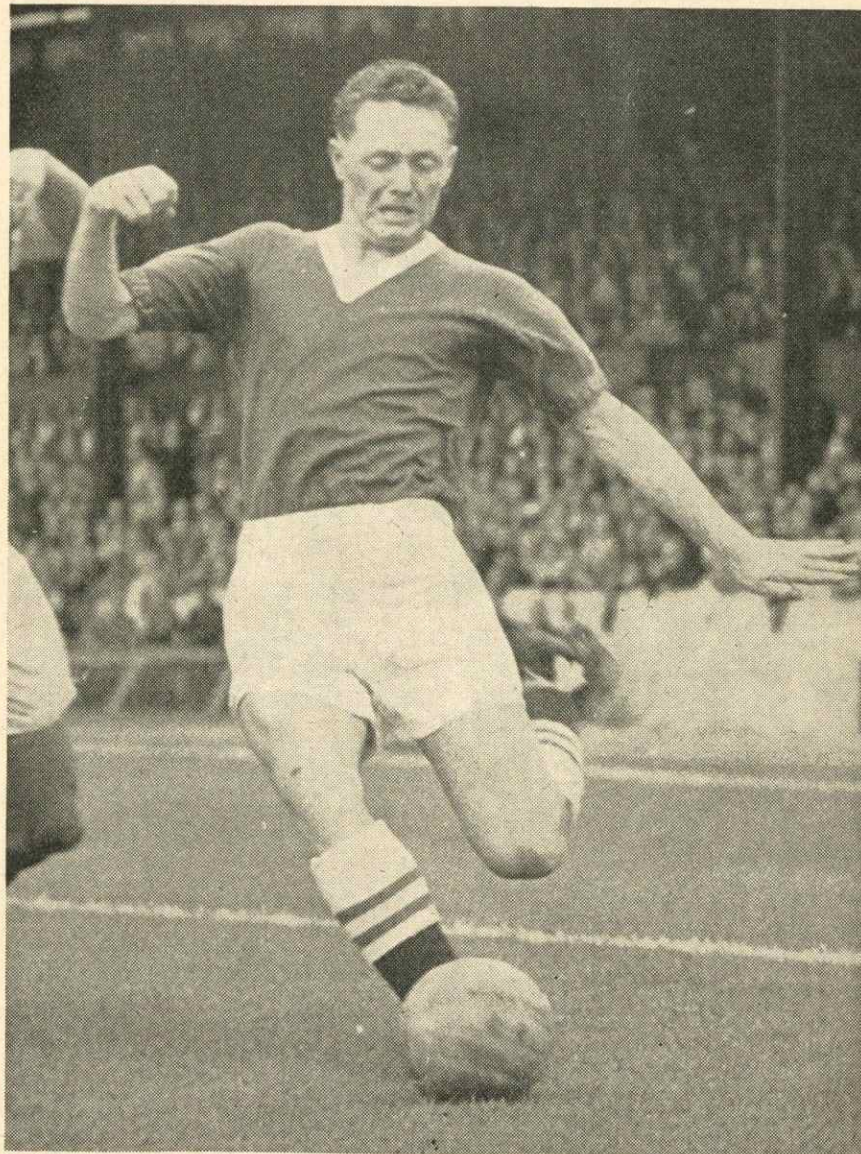
Saturday, 2nd November.  
Beat BRIGHTON AND HOVE ALBION (Away) 5-2. Half-time: 3-0.  
Team: Medlock; Huxford, Fergey; Abrey, Cunningham, Compton; Smith (P.), Cliss, B. Bridges, Blackley, Harrison.  
Scorers: Cliss 2, Harrison 2, Blackley.

### SOUTH-EAST COUNTIES LEAGUE

Saturday, 26th October.  
Beat WEST HAM UNITED (Home) 2-1. Half-time: 2-1.  
Team: B. Smart; Hillary, Legg; Bradbury, P. Conroy, Long; T. Cox, D. Tier, A. Buchanan, Dellar, R. Tambling.  
Scorers: Bradbury, Buchanan.  
Saturday, 2nd November.  
Beat WATFORD (Home) 4-0. Half-time: 3-0.  
Team: B. Smart; Shellito, Legg; Bradbury, Scott, Long; T. Cox, A. Buchanan, Smith (K.), Dellar, Wall.  
Scorers: Wall, Cox, Dellar 2.



## CHELSEA PLAYERS IN ACTION



LES ALLEN

## FIXTURES 1957-58

### Metropolitan League

1957	Opponents	Venue	F.A.
Aug. 24	Bedford Town ...	Away	2-2
" 31	DARTFORD ...	HOME	2-0
Sept. 4	Headington United ...	Away	2-1
" 7	Didcot Town ...	Away	3-0
" 11	GUILDFORD CITY ...	HOME	3-1
" 14	Dunstable Town ...	Away	1-2
" 21	Hastings United ...	Away	2-0
" 28	Tonbridge ...	Away	2-2
Oct. 5	Haywards Heath ...	Away	2-0
" 26	Dunstable Town (Professional Cup) ...	Away	2-0
Nov. 2	Brighton & Hove A....	Away	5-2
" 9	NEWBURY TOWN ...	HOME	.....
" 16	Bedford Town ...	Away	.....
" 23	Crawley ...	Away	.....
" 30	Eastbourne United ...	Away	.....
Dec. 7	WEST HAM UTD. ...	HOME	.....
" 14	Luton Town ...	Away	.....
" 21	Windsor & Eton ...	Away	.....
" 26	Guildford City ...	Away	.....
" 28	Dunstable Town ...	Away	.....
1958			
Jan. 4	Didcot Town ...	Away	.....
" 11	Tonbridge ...	Away	.....
" 18	Hastings United ...	Away	.....
Feb. 1	Eastbourne United ...	Away	.....
" 8	Headington United ...	Away	.....
" 15	Haywards Heath ...	Away	.....
Mar. 1	Newbury Town ...	Away	.....
" 8	Brighton & Hove A....	Away	.....
" 22	Dartford ...	Away	.....
Apr. 4	Windsor & Eton ...	Away	.....
" 7	Crawley ...	Away	.....
" 19	Luton Town ...	Away	.....
Undated	West Ham United ...	Away	.....
	FULHAM ...	HOME	.....
	Fulham ...	Away	.....

### London Mid-Week League

1957	Opponents	Venue	F.A.
Oct. 10	Tottenham Hotspur ...	Away	1-2
" 30	Charlton Athletic ...	Away	3-1
Nov. 20	CRYSTAL PALACE ...	HOME	.....
" 27	WATFORD ...	HOME	.....
Dec. 4	Arsenal ...	Away	.....
" 11	Portsmouth ...	Away	.....
1958			
Jan. 29	TOTTENHAM H. ...	HOME	.....
Feb. 3	West Ham United ...	Away	.....
" 12	CHARLTON A. ...	HOME	.....
" 19	ARSENAL ...	HOME	.....
" 26	Crystal Palace ...	Away	.....
Mar. 5	WEST HAM UTD. ...	HOME	.....
" 19	PORTSMOUTH ...	HOME	.....
Undated	Watford ...	Away	.....

### South-East Counties League

1957	Opponents	Venue	F.A.
Aug. 31	FULHAM ...	Hendon	9-0
Sept. 7	QUEEN'S PARK R. ...	Hendon	6-0
" 14	CHARLTON A. ...	HOME	7-0
Oct. 5	Portsmouth ...	Away	0-1
" 12	TOTTENHAM H. ...	Hendon	11-0
" 26	WEST HAM U. ...	Hendon	2-1
Nov. 2	WATFORD ...	Hendon	4-0
" 9	Watford ...	Away	.....
" 16	MILLWALL ...	Hendon	.....
" 23	PORTSMOUTH ...	Hendon	.....
" 30	Southend U. ...	Away	.....

### Other Junior Matches

1957	Opponents	Venue	F.A.
Aug. 28	Newcastle United ...	Away	1-0
Oct. 22	NEWCASTLE U. ...	HOME	5-2

## OUR NEXT FLOODLIGHT MATCH

Next Tuesday evening we welcome BEOGRADSKI, the leading club from Belgrade (Yugoslavia), in an international club match at Stamford Bridge (kick-off 7.30 p.m.).

Some stand tickets are available at all prices (12/-, 10/-, 8/- and 6/-), but admission to the ground (2/-) and enclosure (3/6) can be made on the day of the match as it is not an all-ticket game. Stand seats can be obtained from the club offices each day on personal application.



## HALF-TIME SCOREBOARD

### FIRST DIVISION

A	Birmingham v. Sunderland	.....
B	Burnley v. Leicester	.....
C	Manchester City v. Bolton	.....
D	Newcastle v. Blackpool	.....
E	Nottingham Forest v. Arsenal	.....
F	Portsmouth v. Wolves	.....
G	Preston N.E. v. Manchester U.	.....
H	Sheffield Wednesday v. Leeds	.....
J	Tottenham v. Everton	.....
K	West Brom. A. v. Aston Villa	.....

### SECOND DIVISION

L	Bristol C. v. Blackburn	.....
M	Charlton v. Derby	.....
N	Grimsby v. West Ham	.....
O	Leyton O. v. Bristol R.	.....
P	Liverpool v. Notts County	.....
R	Rotherham v. Fulham	.....

### THIRD DIVISION (SOUTH)

S	Bournemouth v. Millwall	.....
T	Brentford v. Plymouth	.....
U	Crystal Palace v. Newport	.....
V	Shrewsbury v. Q.P.R.	.....
W	Watford v. Southampton	.....

## NEXT MATCHES AT THIS GROUND

---

**TUESDAY, 12th NOVEMBER**

(Kick-off 7.30 p.m.)

**Beogradski, Belgrade**

International Club Match

(By Floodlight)

---

**SATURDAY, 16th NOVEMBER**

(Kick-off 2.30 p.m.)

**WEST HAM UNITED**

Football Combination

---

**WEDNESDAY, 20th NOVEMBER**

(Kick-off 2.30 p.m.)

**CRYSTAL PALACE**

London Mid-Week League

---

**SATURDAY, 23rd NOVEMBER**

(Kick-off 3 p.m.)

**LEICESTER CITY**

Football League

### Seat Reservations for League Matches

Prices of reserved seats at home League matches are 6/-, 8/-, 10/- and 12/-. Applications (by post only) are accepted not more than four weeks in advance, and should be accompanied by remittance and stamped addressed envelope. It will be appreciated if separate application is made for each match. Seats may be purchased, if still available, by personal application at the club offices in the week preceding the match.