

SEASON

1957-58



MANCHESTER CITY

FOOTBALL CLUB LIMITED



OFFICIAL PROGRAMME 3^d

COVERED ACCOMMODATION
FOR 50,000

SATURDAY, 26th OCTOBER, 1957

LUTON TOWN

KICK-OFF 3-0 p.m.

MANCHESTER CITY HONOURS LIST

F.A. CUP WINNERS 1904, 1934, 1956
FINALISTS 1926, 1933, 1955

•
LEAGUE CHAMPIONS 1937
RUNNERS-UP 1904, 1921

•
DIVISION II CHAMPIONS 1899
1903, 1910, 1928, 1947
RUNNERS-UP 1896, 1953

“STONE-DRI”

REGD.

WEATHERWEAR

A good defence...



... can prove invaluable, both to football teams and their supporters. A Stone-Dri raincoat provides an impregnable defence against a continuous attack by the very worst weather.

A Stone-Dri is warm to wear, modestly priced and available in many styles.

Throughout all seasons keep warm and dry in a Stone-Dri.

Obtainable only at:—

THE DIRECT RAINCOAT CO LTD
66 Market St. Manchester
 Branches in all main towns

Messrs. A. DOUGLAS (Chairman) **E. GILL** D. F. HAMER F. R. JOLLY W. SMITH
Manager: Mr. LESLIE J. McDOWALL **Secretary: Mr. WALTER GRIFFITHS**
 Phone: MOSs Side 1191

Vol. 52

No. 7

(Entered at Stationers' Hall)

SATURDAY, 26th OCT., 1957

SO UNPREDICTABLE

By THE EDITOR

YOU want the shocks? City will provide 'em! Only a few weeks after unhappy supporters were wondering when last their favourites conceded nine goals away from home, they are now gleefully enquiring for details of the last occasion when City scored five on opposing territory.

I should have thought that date was imprinted on the hearts of all Manchester football followers since it happened at Old Trafford on February 12th, 1955, when City beat United 5-0, goals being scored by Hayes (2), Fagan (2) and Hart. So that's one point cleared up, and while on the subject of "when did we last..." I would just tell numerous correspondents that City haven't drawn a League game at home since Aston Villa were at Moss Side on August 25th last year. The result was 1-1 after Villa had led at half time.

One or two sports writers, possibly overwhelmed by that series of heavy defeats, made much of the fact that the victory at Bloomfield Road was City's first away win of the season, but of course they forgot the 3-2 win at Stamford Bridge in City's opening game. And they, like many other people, probably held out little hope of a City win on a ground where Sunderland lost 7-0 a fortnight previously. But the Blues are

nothing if not unpredictable, and from the time Barlow put them ahead with a well-taken goal, City's victory was "in the bag."

It would be uncharitable and untrue to suggest that Taylor's injury, unfortunate though it was, was responsible for Blackpool's defeat. Even at full strength, I doubt whether the Seasiders could have held City on the form they showed on Saturday, but Blackpool staged a gallant rally towards the end and enabled the crowd to see Trautmann at his best.

Nevertheless, City had the game comfortably "sown up" at this stage, and could—indeed, should—have reached double figures. But we won't quarrel about that! Suffice to say it was a fine victory, and should give the side additional encouragement for the hard programme that lies ahead.

Many people, unable to make the trip, have asked me to what I ascribe the surprise result. Chief reason was team-work at its best, although there is no doubt at all that McAdams and Johnstone gave their best displays in a long time, and inspired their colleagues almost beyond belief.

The Irishman, out of the game for long spells through a serious back injury, has not had the best of luck since his return. Possibly over-eagerness has spoiled much of his work, but he is a trier, and we all hope that Saturday's show will give him the incentive he needs. Johnstone, too, has been handicapped by injury, but at Blackpool he showed that on his day he has few equals as a ball player and a strategist.

SOCGER BOMBSHELL

Big 3-Star Feature with—

JACKIE MILBURN
JOHN CHARLES
ARTHUR WALMSLEY

Next week in the

**Evening
Chronicle**

them all

Brewed & Bottled by
GROVES & WHITNALL
 LIMITED
 SALEFORD

Maine Road Gossip

THEY'RE TOUGH CUSTOMERS

By THE EDITOR

LUTON TOWN, our visitors today, invariably give us a hard game, and if past results can be taken as a criterion, there may not be much in it at the finish. In 1950-51, both matches ended all square, and when next the teams met in the League in 1955-56, each game ended 3-2 in favour of the home team as it did again last season.

CITY and Luton have also had some lively meetings in the F.A. Cup, and City haven't forgotten that 5-1 defeat at Kenilworth Road in 1953, after a 1-1 draw at Moss Side. City, of course, were avenged two seasons later when they won 2-0 in the snow at Luton.

MANY thanks to all who contributed to the splendid collection of £63 7s. taken on behalf of the National Spastics' Society at City's match with Sheffield Wednesday.

ROLL CALL

DIVISION I

Appearances: Barnes, Ewing, Hayes 13; Warhurst, McAdams 12; Johnstone 11; Barlow, Fagan 10; Little 9; Leivers, Savage, Sear 7; Trautmann 6; Clarke, Marsden 4; Branagan 3; McTavish, McClelland 1.
Scorers: Hayes 9; Barlow 7; Fagan, McAdams 5; Johnstone 3; Barnes 2; Ewing, Clarke 1—33.

CENTRAL LEAGUE

Appearances: Cheetham, McTavish, Kirkman, Phoenix (R.), McClelland 12; Taylor 10; Branagan 9; Savage, Fleet, Fidler 7; Meadows, Marsden 6; Sear, Clarke (R.), Little 5; Barlow, Murray, Shawcross 4; Fagan, Johnson 3; Faulkner, Horridge 2; Matthews, Leivers, Davidson, Bourne, Lister 1.
Scorers: Kirkman 7; McClelland 5; Phoenix 3; Barlow, Clarke, Bourne 2; Fagan, Murray, Branagan, Fidler, Johnson, Lister 1—27.

LANCASHIRE LEAGUE—DIV. I

Appearances: Pike 6; Leigh, Bourne, Davies 5; Fleet, Cooke 4; Taylor, Horridge, Pennington, Lister, Fidler, Hibbert, Davidson 3; Rooney, Rogers, Bradley, Johnson, Faulkner, Shawcross, Clarke (M.), Matthews 2; Murray, Jones, Senescall, McDonald (R.), Fenner,

Phoenix (M.), Baxter, Worthington, Cuthbert, Grey, Hart 1.

Scorers: Johnson 3; Bourne, Rooney, Fenner, Faulkner, Clarke, Cuthbert 1—9.

Meet the Referee

WHEN we asked Mr. "Bill" Clements, of West Bromwich, who has charge of today's game, how he came to take up refereeing, he told us he was advised to do so when he married the daughter of former League referee, Mr. Tom Fardell. Whether that advice came from his wife or father-in-law is not specified, but it was very sound, since when he came to take the examination, Mr. Clements, who had had a successful playing career in junior football, passed with 95 marks out of 100.

That was in 1943, and three years later he was promoted to the "middle" in the Birmingham and District League and to the Central League linesmen's list. In 1948-49, Mr. Clements moved up to the Central League referee's list, and Football League line, while promotion to the list of Football League referees came in 1951-52. Since then, he has had many important games including the F.A. Cup fifth round tie between Liverpool and Huddersfield Town in 1954, while last season he was one of the linesmen at the France v. Russia match in Paris.

In addition to other duties, Mr. Clements is referees' secretary to the Handsworth and District and Junior Leagues, and a Birmingham County F.A. representative. In his spare time, he coaches young candidate referees up to examination standard, and many of them have good reason to be grateful to Mr. Clements who has given excellent service to senior and junior football.



★ OUR VISITORS ★

TODAY we welcome Luton Town whose team probably will be chosen from the following players:

RON BAYNHAM (goalkeeper).—A former England goalkeeper whose form still rates him as one of the best in the Football League. Won his first cap against Denmark two seasons ago without any previous representative match experience. Luton signed him from Worcester City.

SEAMUS DUNNE (right back).—Was signed from Shelbourne in 1951 and developed so rapidly that he was included in Luton's league side the same season. This Eire international is exceptionally fast and his determined tackling is a severe obstacle for any winger.

LESLIE JONES (left back).—Welsh-born, and has several times been watched by international selectors. Played with Junior football in the local Luton League and made rapid strides after signing professional forms in 1950.

BOB MORTON (right half).—One of Luton's most accomplished players who is up to international standard at half-back and centre-forward. Unfortunately to have missed full honours but has played many F.A. representative matches.

SID OWEN (centre half).—Has been one of the League's outstanding centre-halves for many seasons. Skippers the side he joined from Birmingham City as a half-back in 1947. Won England "B" honours and then, in 1954, won full caps for England.

REG PEARCE (left half).—Utility player who can fill all the half-back and forward positions. Was not introduced into League football until he was 24, when Luton persuaded him to leave Winsford United in 1954.

JIMMY ADAM (outside right).—This fast

and clever Scot who went to Luton from Spennymoor United in 1953 can play on either wing.

GORDON TURNER (inside right).—Has scored many goals for Luton, and this talented player—a master with his ball distribution and sharp-shooting—is the spearhead of the attack. Son of a former Hull City player, he signed for Luton after demob, in 1950.

ALAN BROWN (centre forward).—Still known as soccer's unluckiest player—he missed two Cup finals with Blackpool through injury. Signed for Luton after a £12,000 deal with the Lancashire side in February this year. Blackpool signed him from East Fife for £26,000 in 1950.

GEORGE CUMMINS (inside left).—This Eire international was signed from Everton for £15,000 in 1953. He joined the Liverpool club in 1950 from a Dublin junior side after he had played for the Irish Youth XI.

GEORGE MCLEOD (outside left).—Inverness-born, this brawny winger attracted Chelsea scouts before Luton signed him from Clachnacuddin, a Highland League side.

MIKE CULLEN (outside right).—Glasgow-born, and signed by Luton from Scottish junior club, Douglasdale Juniors, in 1949. Scottish international.

JOHN GROVES (inside forward).—Born at Derby. Son of Derby County's pre-war star Arthur Groves, who played in same Derby team as Luton manager, Mr. "Dally" Duncan. Versatile player equally at home at right-half.

GUS DEMMY

COMMISSION AGENT

58, SWAN STREET
MANCHESTER 4

Telephone: DEAnsate 2041 and 8711 (all lines)

MEMBER OF

VICTORIA CLUB, LONDON
NORTHERN B.P.A.
MANCHESTER B.P.A.
NATIONAL TURF PROTECTION
SOCIETY

TURF GUARDIAN SOCIETY

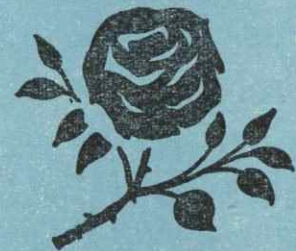
Attends all
Principal Race Meetings
(TATTERSALLS ENCLOSURE)

also

Albion Greyhounds, Salford
(MAIN ENCLOSURE)

The Gus Demmy Organisation offers facilities second to none in respect of SERVICE • INTEGRITY SECURITY and CONFIDENCE NO LIMITS FREE POSTAGE

Ante-Post books always open on all future events



RED ROSE
STOUT

"Flower of
them all"

Brewed & Bottled by
GROVES & WHITNALL
LIMITED
SALFORD

BUILDING MATERIALS

Specialities: Plastering Materials.

*Phone:

CENtral 2474/5

PLUMBING MATERIALS

Specialities: Copper Cylinders and Boilers, Steel Storage Cisterns, Copper Tubes and Fittings.

THE DIRECT RAINCO
66 Market St. Ma
Branches in all mai

NG SUPPLIES
MATERIAL MERCHANTS
MANCHESTER, 4

Orders and enquiries large or small receive the same keen attention. New customers very welcome.

FOR GREATER WARMTH AND ECONOMY

SPORTSMAN'S CORNER

MEADOWS' GAMES FOR CITY

IN common with sports lovers all over the country, I was extremely sorry to hear that that grand player Jimmy Meadows had been forced to give up active participation in the game because of injury. I trust you will convey to him the best wishes of the Highbury popular side for his success in whatever vocation he takes up in the future. And perhaps you would be kind enough to let me know how many games he played for City and in what positions.—“MANCHESTER EXILE,” Walthamstow.

Your kind message duly passed on to Jimmy who has received many in similar vein. Signed from Southport in March, 1951, Jimmy played in 141 League and Cup games for City as follows: outside right 69; right back 35; centre forward 21; left back 10; centre half 3; inside right 2; inside left 1.

WHEN was the first F.A. Amateur Cup final at Wembley? I say it was before the war, but my mate doesn't believe me.—F. T., Blackley.

We don't blame him, either. Wembley staged its first Amateur Cup Final in 1949 when Bromley beat Romford 1-0.

WHICH teams play in Section “B” of the Lancashire League Supplementary Cup competition? And would it not be possible to publish all this League's tables in the programme?—GEORGE WATKINS, Sale Moor.

Division I, section “B” comprises Barrow Reserves, Blackburn “A,” Blackpool “A,” Burnley

“A,” Liverpool “A,” Preston “A” and Everton “A.” Division 2, section “B” has Accrington “A” instead of Barrow, and of the rest, only Liverpool do not compete in this section. Junior section “B” comprises Blackburn, Burnley, Everton, Preston and Blackpool. With ordinary League games and the Supplementary Cup matches, the League have nine tables, far too many for publication here. Section “A” tables are published since they concern those teams in and around Manchester.

WHAT was the City team beaten 2-0 at Leeds in the F.A. Youth Cup game last week?—“JUNIOR SUPPORTER,” Levenshulme.

Guinn; Cooke, Sadler; Cheetham, Ashton, Shawcross; Fenner, Worthington, Lister, Hardman, Riley.

WHO were the first winners of the F.A. Charity Shield?—DAVID WORTHINGTON, Chorlton.

Manchester United, in 1908.

Pass Your Sport Problems to

ROY CLARKE

(Manchester City F.C. & Wales)

I CAN SUPPLY ALL YOUR SPORTS REQUISITES, TOYS, GAMES, ETC., in fact

everything for the sportsman

RUSHOLME SPORTS HOUSE
174 WILMSLOW ROAD
Rusholme, Manchester 14

Telephone: RUSholme 1672

Call and have a friendly chat, only 5 mins. from Maine Rd. ground

R.A.C. MOTOR INSURANCE

Motor Rates throughout the Country were increased up to 33½% by most Insurance Companies from 1st July, 1957, for all motor vehicles.

If you are due a No Claim Bonus from your present insurers you can reduce this extra cost by transferring to the R.A.C. on renewal who will allow you an immediate 33½% No Claim Bonus (irrespective of the amount now earned) and increased to 40% after four years claim free driving.

Extra benefits are included in the Policy over and above the usual given by other Insurance Offices as the R.A.C. deem this essential for full protection. Commercial Vehicles also receive an immediate 33½% No Claim Bonus if no claim is made during the year prior to transfer.

We also transact Shop Insurance which allows an immediate 25% No Claim Bonus subject to no claim made during the year prior to transfer.

Reduce your Insurance Overheads (but still combining full security) by writing, telephoning or calling at

The R.A.C. Official Agents:

R. E. MERRIN & CO.

1180, CHESTER RD., STRET福德

'Phone: LONGford 4612

After 5 p.m. MOSs Side 4914

WOULD HAVE BEEN GREATER

By ARTHUR WALMSLEY

(Evening Chronicle Sports Columnist)

COMPARISONS, they say, are odious. As with generalisation that is not always true. Indeed, comparisons conducted without spite can afford the most lively and rewarding discussion. It is in that spirit that I would like to pay final tribute to Jimmy Meadows by comparing him with those two great defenders who served Manchester City so well as a full-back partnership for so many seasons—Bert Sproston and Sammy Barkas.

The names of Swift, Barkas and Sproston combined to form an iron curtain in Soccer long before the words “iron curtain” had any political significance. The trio formed the finest defensive combination of their day. It is no small praise to Meadows to say, then, that I believe he could have taken his place alongside either Barkas and Sproston with credit.

Indeed, I would go further and say that in the fulness of time, had not injury halted Meadows's career just when it was reaching full bloom, he would have surpassed his two great predecessors as a player and emulated Sam Barkas as a captain—and I rate Sam one of the most inspiring skippers I have seen.

If you think I over-rate the promise of Meadows, let us see just what he achieved in his short career as a defender.

Signed by City as a right winger, Jimmy was called up for National Service for a two-year spell before

he had any real chance to settle down at Maine Road.

Yet within two years of being converted to a full-back he was so outstanding in the position that he had won his place in the England team, and only two weeks before his disastrous Cup Final injury had played so well against Scotland at Wembley as to suggest he was a fixture in the international team for years to come. Meadows was still only 23 at the time, with only two years' experience of full-back play behind him.

Is it too much to say, then, that had his career been uninterrupted he would by now have matured as an even greater player than he was when first capped. I think not.

Now his day is done—a tragedy for player and club. In extending my sympathy to Jimmy I also wish him the best of luck for the future—as I'm sure do the thousands of City supporters who have enjoyed and admired his play in the past.

FORD think of NUNNS

H. E. NUNN & CO. LTD. · 282 BURY NEW ROAD · MANCHESTER 7 · Telephone BROughton 2201
DISTRIBUTORS OF FORD CARS AND THAMES COMMERCIAL VEHICLES

HALF-TIME SCOREBOARD

A WEST BROM. A.	K TOTTENHAM H.
MANCHESTER U.	LEEDS UNITED
B BIRMINGHAM C.	L CHARLTON A.
BOLTON W.	FULHAM
C BURNLEY	M GRIMSBY TOWN
ASTON VILLA	BLACKBURN R.
D CHELSEA	N LIVERPOOL
ARSENAL	BRISTOL ROVERS
E NEWCASTLE U.	O BURY
W'HAMPTON W.	BRADFORD CITY
F NOTTINGHAM F.	P CHESTER
BLACKPOOL	STOCKPORT C.
G PORTSMOUTH	Q OLDHAM A.
LEICESTER CITY	WORKINGTON
H PRESTON N. E.	R TRANMERE R.
EVERTON	ROCHDALE
J SHEFFIELD W.	S WOLVES Res.
SUNDERLAND	CITY Res.

TODAY'S MUSICAL PROGRAMME

BESWICK PRIZE BAND

Conductor :
Mr. ALBERT RISBY

1. MARCH *Victors' Return*
2. OVERTURE *Carnival*
3. SELECTION *Show Boat*
4. NOVELTY *Mosquitoes' Parade*
5. WALTZ *Estudiantina*
6. SELECTION *The Mikado*
7. MARCH *B.B. and C.F.*

UCP RESTAURANTS

FOR A GOOD MEAL
AFTER THE MATCH

MERCHANTS 92 MARKET ST.
UCP · MANOR · TUDOR
MARKET ST. BROWN ST. OXFORD ST.
(opp. Lewis's) (Market St.) (nr. Odeon)

A.A. & R.A.C. appointed
garage. Repairs to all
makes of cars. Author-
ised Wolseley dealer.

Breakdown Service
Day & Night

FINGLAND'S
GARAGE & COACH STATION
261/7, WILMSLOW ROAD
RUSHOLME, MANCHESTER, 14
RUSHOLME 2894

Luxury coaches & cars
available for private
parties, works' con-
tracts, etc.

Let us quote you

SPEARS

Largest cash buyers of all types of
Cameras & Photographic Equipment


WRITE, CALL OR PHONE

SPEARS WAREHOUSE, 14 Watling St. (off Cannon St.) Manchester 4

★ THE TEAMS ★

MANCHESTER CITY

(Sky blue shirts, white knickers)

		1		
		TRAUTMANN		
	2		3	
	LEIVERS		SEAR	
4		5		6
BARNES		EWING		WARHURST
7	8	9	10	11
BARLOW	HAYES	JOHNSTONE	McADAMS	FAGAN
<div> <div>Referee: W. Clements, West Brom. Kick-off 3 p.m.</div> <div>  </div> <div>Linesmen: D. B. Hepworth (Red Flag) F. G. Perkins (Yellow Flag)</div> </div>				
11	10	9	8	7
McLEOD	CUMMINS	BROWN	TURNER	ADAM
6	5		4	
PEARCE	OWEN		MORTON	
3			2	
JONES			DUNNE	
		1		
		BAYNHAM		

LUTON TOWN

(White shirts, black knickers)

NEXT MATCH AT MAINE ROAD

CENTRAL LEAGUE

City Reserves v. Aston Villa Reserves

SATURDAY, NOVEMBER 2nd. KICK-OFF 3 p.m.

Evening Chronicle
FOOTBALL PINK
FINAL

**A WINNER
EVERY
SATURDAY!**

The paper that has EVERYTHING!

Follow the game with Sunday's

TOP TEAM

of sports writers

EMPIRE NEWS

and Sunday Chronicle

THE GREAT SUNDAY PAPER OF THE NORTH

HILTON READY-MIXED CONCRETE

SAVES TIME — CUTS COSTS

- ★ No Labour Problems
- Plant Hire
- Waste Materials or
- "Wet" Time.

Quality control in modern laboratory guarantees mix consistency. Any mix supplied at day's notice over 20 mile radius.

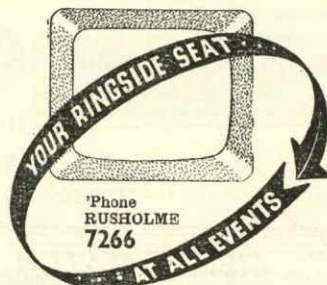
HILTON GRAVEL LIMITED

Ready Mixed Concrete Division

LIVERPOOL ROAD

MANCHESTER 3

DEAnsgate 5455-7



FOR RELIABLE SPORTSVIEWING
Rent or Buy your Television from

C.H. Radio Services

53, SLADE LANE, LONGSIGHT,
MANCHESTER 13. RUSHOLME 7266.

Remember we play away from home ALKRINGTON to ALTRINCHAM—ROCHDALE to RINGWAY—MIDDLETON to MACCLESFIELD—SWINTON to STOCKPORT—WARRINGTON to WILMSLOW. Our service vans are equipped with the latest V.H.F. Radio-telephones to ensure that our engineers know of your difficulties immediately. C.H. RADIO SERVICES "score" with the fastest T.V. Service available. Part Exchanges, Rentals, Sales, First-class Conversions, Repairs, Assisted Purchases; in fact

ARE THERE TOO MANY NAMES?

By DAVID JACK

(Empire News and Sunday Chronicle columnist)

THROUGH the medium of full internationals, Under-23 internationals, inter-League games and sundry other representative fixtures, England's World Cup team to compete in Sweden next summer is being assembled.

This is team-building on a massive scale. Confronted by, perhaps, six or more names for each position in the World Cup XI, selectors have the opportunity to shuffle, switch, and permute practically every able-bodied Soccer citizen of this island. Plus a few not quite so able in body!

England's World Cup recruiting officers may have started their drive a little late, but in the time at their disposal, they seem determined to award a 90-minutes' interview to every applicant for a seat on the 'plane to Stockholm.

When the Football League played the League of Ireland at Leeds recently, the form shown by the Englishmen was disappointing. Even team manager Walter Winterbottom, never the pessimist, admitted as much to me on the return journey to London.

Now comes the prescription for those ailments. The Football League meet the Irish League in Belfast on Wednesday—and 11 changes have been made in the team which played at Elland Road.

Is this team building? It may be in the eyes of some folk, yet I trust I am not qualifying for the "gagged sine die" list by venturing to comment that such a policy is just slightly drastic.

If these wholesale changes are to be made throughout the season, there can be no confidence in the emergence of a settled team by next June. Could it be that the selectors have TOO MANY names with which to juggle?

Far better, surely, to realise that about eight of England's team are already near-certainties—players like Byrne, Clayton, Wright, Edwards and Haynes. Why not allow them to play in all representative games in which they are eligible, alongside a few selected candidates for the problem positions?

That way, a collection of individuals would really get to know each other through constant match play. AND WE'D HAVE A TEAM FOR THE WORLD CUP.

Anytime's Cocktail time!

Make it a —
SMITHS

"Eleven o'Clock

WINE
COCKTAIL

The Ideal Aperitif
Obtainable from your local Wine Merchant

Proprietors:

James Smith & Co. (Wine & Spirit Merchants) Ltd.

LEAGUE TABLES

Results of First Division Games

(Including October 19th)

DIVISION I (Including October 19th)							CENTRAL LEAGUE (Including October 19th)							LANCASHIRE LEAGUE—Supp. Com (Including October 19th)									
Goals							Goals							Division I—Section 'A'									
P	W	D	L	F	A	Pts	P	W	D	L	F	A	Pts	P	W	D	L	F	A	Pts			
Wolves.....	14	10	2	2	39	16	22	Man. United.....	14	9	2	3	45	24	20	Bolton 'A'.....	7	6	1	0	18	5	13
West Brom.....	14	6	7	1	33	18	19	Sheffield W.....	12	8	2	2	36	16	18	R'dale Res.....	6	3	2	1	20	8	8
Everton.....	12	7	4	1	23	16	18	Wolves.....	13	7	3	3	28	19	17	Bury 'A'.....	6	4	0	2	18	16	8
Man. United.....	13	8	1	4	34	21	17	Barnsley.....	13	6	4	3	25	18	16	Man. U. 'A'.....	6	1	1	4	13	13	3
Nottingham F.....	13	8	1	4	29	19	17	Bury.....	13	7	2	4	28	22	16	Man. C. 'A'.....	2	0	0	2	1	5	0
Arsenal.....	14	7	2	5	25	21	16	Liverpool.....	12	7	0	5	31	23	14	Oldham 'A'.....	5	0	0	5	4	27	0
Man. City.....	13	8	0	5	33	36	16	Huddersfield.....	12	7	0	5	31	23	14	DIVISION II—Section 'A'							
Preston N.E.....	13	7	1	5	26	18	15	Aston Villa.....	14	6	2	6	26	25	14	Bury 'B'.....	5	3	1	1	11	8	7
Luton Town.....	13	7	1	5	16	14	15	Bolton W.....	14	5	3	6	22	23	13	Man. C. 'B'.....	4	3	0	1	14	6	6
Chelsea.....	13	5	3	5	30	27	13	Derby C.....	13	5	3	5	25	34	13	Bolton 'B'.....	4	2	1	1	6	5	5
Leeds United.....	13	5	3	6	17	23	13	Preston N.E.....	14	5	2	7	21	22	12	Stockport 'B'.....	3	1	1	1	8	8	3
Blackpool.....	12	5	1	6	22	21	11	Newcastle U.....	13	6	0	7	20	25	12	Man. U. 'B'.....	3	0	2	1	3	7	2
Burnley.....	13	4	3	6	22	28	11	Stoke City.....	14	4	4	6	18	21	12	Rochdale 'A'.....	5	0	1	4	11	19	1
Birmingham.....	14	4	3	7	22	35	11	Blackpool.....	12	4	4	4	18	23	12	JUNIOR DIV.—Section 'A'							
Newcastle U.....	13	4	2	7	20	21	10	Sheffield U.....	14	5	2	7	25	31	12	Bury.....	5	4	0	1	20	5	8
Portsmouth.....	13	4	2	7	22	26	10	Chesterfield.....	12	5	1	6	22	22	11	Bolton W.....	5	2	0	3	10	12	4
Tottenham.....	14	4	2	8	30	38	10	Man. City.....	14	5	0	9	27	29	10	Rochdale.....	4	2	0	2	7	14	4
Aston Villa.....	14	4	2	8	22	31	10	Leeds U.....	12	4	2	6	19	23	10	Man. City.....	4	1	1	2	6	10	3
Sunderland.....	14	3	3	8	15	35	9	West Brom.....	13	4	2	7	24	20	10	Stockport 'B'.....	2	0	1	1	4	6	1
Leicester C.....	13	3	1	9	26	33	7	Burnley.....	13	3	2	8	12	28	8	Man. City.....	4	1	1	2	6	10	3
Sheffield W.....	13	3	1	9	15	27	7	Blackburn R.....	12	2	2	9	16	39	6	Stockport 'B'.....	2	0	1	1	4	6	1

THIS SEASON'S FIXTURES

LEAGUE 1st Division

1957	Opponents	Res.
Aug. 2	Chelsea.....	A 3-2
31	Manchester United.....	A 1-4
Sept. 4	Chelsea (7-30).....	H 5-2
7	Nottingham Forest.....	A 1-2
11	Preston N.E. (7-30).....	H 2-0
14	Portsmouth.....	H 2-1
18	Preston N.E.....	A 1-6
21	West Brom. A.....	A 2-9
28	Tottenham H.....	H 5-1
Oct. 5	Birmingham City.....	A 0-4
9	Sheffield Wed. (7-30).....	H 2-0
12	Leicester City.....	H 4-3
19	Blackpool.....	A 5-2
26	Luton Town.....	H
Nov. 2	Arsenal.....	A
9	Bolton Wanderers.....	H
16	Leeds United.....	A
23	Wolverhampton W.....	H
30	Sunderland.....	A
Dec. 7	Everton.....	H
14	Aston Villa.....	A
21	Sheffield W.....	A
25	Burnley.....	A
26	Burnley.....	H
28	Manchester United.....	H
1958		
Jan. 4	F.A. Cup (3rd Rd.).....	
11	Nottingham Forest.....	H
18	Portsmouth.....	A
25	F.A. Cup (4th Rd.).....	
Feb. 1	West Brom. A.....	H
8	Tottenham H.....	A
15	Birmingham City.....	H
22	Leicester City.....	A
Mar. 1	Blackpool.....	H
8	Luton Town.....	A
15	Arsenal.....	H
22	Wolverhampton W.....	A
29	Leeds United.....	H
April 4	Newcastle United.....	A
5	Bolton Wanderers.....	A
7	Newcastle United.....	H
12	Sunderland.....	H
19	Everton.....	A
26	Aston Villa.....	H

Central League

1957	Opponents	Res.
Aug. 26	Liverpool (6-15).....	H 2-1
31	Manchester United.....	H 3-4
Sept. 2	Liverpool.....	A 2-5
7	Huddersfield T.....	H 1-2
10	Burnley.....	A 0-1
14	Bury.....	A 1-3
16	Burnley (7-30).....	H 3-0
21	Chesterfield.....	H 5-1
28	West Brom. A.....	A 0-1
Oct. 2	Preston N.E.....	A 1-5
5	Stoke City.....	H 3-0
12	Leeds United.....	A 3-1
14	Sheffield Wed. (7-15).....	A 1-2
19	Bolton Wanderers.....	H 2-3
26	Wolverhampton W.....	A
Nov. 2	Aston Villa.....	H
9	Derby County.....	A
16	Everton.....	H
23	Barnsley.....	A
30	Sheffield United.....	H
Dec. 7	Blackpool.....	A
14	Blackburn Rovers.....	H
21	Sheffield Wed.....	H
25	Newcastle United.....	A
26	Newcastle United.....	A
28	Manchester United.....	A
1958		
Jan. 4		
11	Huddersfield T.....	A
18	Bury.....	H
25		
Feb. 1	Chesterfield.....	A
8	West Brom. A.....	H
15	Stoke City.....	A
22	Leeds United.....	H
Mar. 1	Bolton Wanderers.....	A
8	Wolverhampton W.....	H
15	Aston Villa.....	A
22	Derby County.....	H
29	Everton.....	A
April 4	Preston N.E.....	H
5	Barnsley.....	A
12	Sheffield United.....	A
19	Blackpool.....	H

Lancashire League "A"

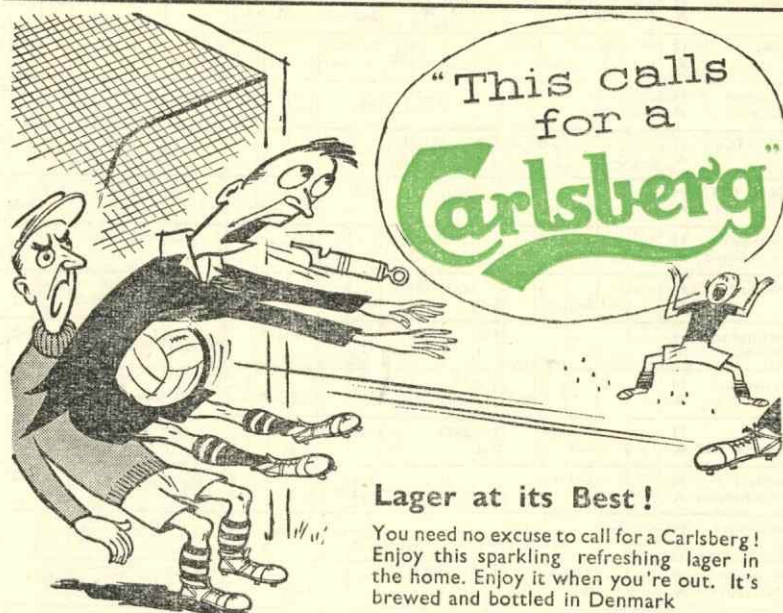
1957	Opponents	Res.
Aug. 24	Preston N.E. 'A'.....	H 0-1
31	Bolton W. 'A' (S.C.).....	H 1-2
Sept. 7	Rochdale Res. (S.C.).....	A 0-3
28	Blackpool 'A'.....	A 5-2
Oct. 5	Everton 'A'.....	H 1-2
12	Liverpool 'A'.....	A 1-1
19	Barrow Res.....	A 1-2
26	Man. U. 'A' (S.C.).....	H
Nov. 2	Oldham A. 'A' (S.C.).....	A
9	Bolton W. 'A' (S.C.).....	A
16	Everton 'A'.....	A
23	Blackpool 'A'.....	H
30	Burnley 'A'.....	A
Dec. 7	Bury 'A' (S.C.).....	A
14	Blackburn R. 'A'.....	A
21	Blackburn R. 'A'.....	H
26	Bury 'A' (S.C.).....	H
28	Oldham A. 'A' (S.C.).....	H
1958		
Jan. 1		
4	Rochdale Res. (S.C.).....	H
11	Barrow Res.....	H
18	Rochdale Res.....	A
25	Man. U. 'A' (S.C.).....	A
Feb. 1	Bolton W. 'A'.....	H
8	Burnley 'A'.....	A
15	Bury 'A'.....	A
22	Rochdale Res.....	H
Mar. 1	Man. United 'A'.....	H
8	Man. United 'A'.....	A
15	Liverpool 'A'.....	H
22	Bury 'A'.....	H
29		
April 4		
5	Oldham Ath. 'A'.....	H
7		
12	Oldham Ath. 'A'.....	A
19	Preston N.E. 'A'.....	A

CLUB		Arsenal	Aston Villa	Birmingham City	Blackpool	Bolton Wanderers	Burnley	Chelsea	Everton	Leeds United	Leicester City	Luton Town	MAN. CITY	Manchester United	Newcastle United	Nottingham Forest	Portsmouth	Preston North End	Sheffield Wednesday	Sunderland	Tottenham Hotspur	West Bromwich A.	Wolverhampton W
Arsenal	H A	★	4-0	1-3	0-1	1-0			2-3 2-2	2-1	3-1	2-0		2-4						1-0	1-3	2-2 2-1	
Aston Villa	H A	0-4	★	1-3	1-1			2-4	0-1 2-0 0-4		5-1	2-0		1-4	4-3					1-1			2-3 1-2
Birmingham City	H A	3-1	3-1	★			1-3	1-5					4-0	1-4	0-2 1-1			3-1			0-0 1-7	0-0	1-5
Blackpool	H A	1-0	1-1		★	0-3			3-0		1-2 0-2	2-5		2-1					3-0	7-0			1-3
Bolton Wanderers	H A	0-1			3-0	★				1-2	3-2	0-1		4-0			1-0			2-2 2-1	3-2	2-2	1-1 1-6
Burnley	H A		3-1			★	1-6	1-1				2-3			0-2 3-1 0-7		0-0	2-0 1-2		6-0	1-3	2-2	
Chelsea	H A		4-2	5-1		6-1	★	0-3					2-3 2-5		3-1				1-0		1-1	2-2 1-1	1-2
Everton	H A	2-2 3-2	1-0			1-1	3-0	★		2-2	1-0		3-3 0-3	3-2						3-1			1-0
Leeds United	H A		4-0 0-2		0-3	2-1				★	2-1	0-2 1-1			0-5	1-2		2-1		2-1		1-1	1-1
Leicester City	H A		1-3	1-5		2-3		2-2		1-2	★		3-4	0-3		3-1				4-1 1-2	2-3		2-3
Luton Town	H A		0-2	0-2		2-0 2-1	1-0	3-2	0-1	1-1 2-0		★							0-1	2-0	0-3		3-1
MAN. CITY	H A							5-2 3-2			4-3		★	1-4		1-2		2-1	2-0 1-6		5-1	2-9	
Manchester United	H A	4-2	4-1		1-2 4-1	0-4			3-0 3-3	5-0	3-0		4-1	★		2-1		0-3					1-3
Newcastle United	H A		3-4	4-1			2-0	1-3	2-3						★		2-0 2-2	0-2	0-0 0-1	0-2	3-1	1-2	
Nottingham Forest	H A			1-1 2-0			7-0 1-3				2-1	1-3		2-1	1-2	★	4-1	2-1		2-1	4-3	0-2	
Portsmouth	H A					0-1	0-0		1-2				1-2	3-0		2-2 0-2	1-4	★	0-4	3-2	5-1 5-3	1-3	
Preston North End	H A			1-3		2-1 0-2	5-2					1-0	6-1 0-2		2-0	1-2	4-0	★		0-0	3-1	1-4	
Sheffield Wednesday	H A			5-3	0-3			0-1		2-1 1-4	0-2	0-2			1-0 0-0	1-2		2-3	★		2-4	1-2	
Sunderland	H A	0-1	1-1			1-2 2-2	0-6		1-3	1-2	3-2 1-4	3-0				2-0			0-0	★			0-5
Tottenham Hotspur	H A	3-1		7-1 0-0		2-3	3-1	1-1					1-5	1-3	3-4	3-5 1-5	1-3		4-2		★		0-4
West Brom. Albion	H A	1-2 2-2		0-0		2-2		1-1 2-2		1-1			9-2		2-1		3-1	4-1		2-1		★	
Wolverhampton Wanderers	H A		2-1 3-2	5-1	3-1	6-1 1-1		2-1		0-1	1-1	3-2	1-3		3-1					5-0	4-0		★

★ OUR PLAYING STAFF ★

		Height		Weight				Height		Weight	
Position		ft. ins.		st. lbs.		Position		ft. ins.		st. lbs.	
Barlow, C. J.	O.R. ...	5	6	10	13	Leivers, W. E.	C.H. or R.B.	6	2½	14	0
Barnes, K. H.	R.H. ...	5	9½	10	10½	Little, R.	L.B. ...	5	9	11	4
Bourne, A.	I.R. ...	5	8½	12	2	Marsden, K.	C.H. ...	6	1	12	8
Branagan, K.	R.B. ...	5	7½	11	3	Matthews, F. R.	O.R. ...	5	10½	10	11
Cheetham, R.A.J.	W.H. ...	5	11	12	0	Meadows, J.	R.B. ...	6	0	12	5
Clarke R. J.	O.L. ...	5	9½	10	12½	Murray, H.	O.L. ...	5	5	9	11
Davidson, D.	L.H. ...	5	9½	11	4½	McAdams, W. J.	I.R. ...	5	9½	11	7
Dyson, J.	I.L. ...	5	9	10	10	McClelland, J. B.	O.R. ...	5	8½	10	10
Ewing, D.	C.H. ...	6	0½	14	0	McDonald, R.	L.B. ...	5	8½	10	10
Fagan, F.	O.R. or O.L.	5	6½	9	10	McLardy, B.	R.H. ...	5	8½	11	13
Faulkner, R. V.	I.R. or I.L.	5	8½	11	7	McTavish, J. R.	R.H. ...	5	10	11	4
Fidler, D. J.	O.L. ...	5	9½	11	2	Pennington, J.	O.R. ...	5	0½	9	9½
Fleet, S.	Goal ...	6	0½	13	7	Phoenix, R. J.	I.L. or L.H.	5	8½	11	6
Grey, R. A.	I.R. ...	5	11½	12	12	Rucker, N.	O.R. or O.L.	5	8	10	3
Hart, J. P.	I.R. ...	5	8½	11	2	Savage, J. A.	Goal ...	6	4	15	10
Hayes, J.	I.R. ...	5	7½	10	11½	Sear, C. R.	F.B. ...	5	10½	10	1
Horridge, P.	R.B. or L.B.	5	9½	12	5	Taylor, K. V.	L.B. ...	5	11	11	12½
Johnstone, R.	C.F. or I.L.	5	5	11	2	Trautmann, B. C.	Goal ...	6	1½	13	13½
Kirkman, A. J.	I.L. ...	5	10	11	12	Warhurst, R.	L.H. ...	5	7	10	12
Leigh, P.	L.B. ...	5	7	11	0						

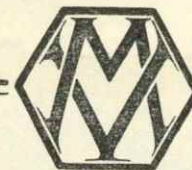
Are you reading the **Les McDowall—Matt. Busby** page in the *Evening Chronicle Football Pink*—It's the talk of the soccer world



Lager at its Best!

You need no excuse to call for a Carlsberg! Enjoy this sparkling refreshing lager in the home. Enjoy it when you're out. It's brewed and bottled in Denmark

★ Try Carlsberg Danish Pilsner or Carlsberg Lager Export de Luxe



SECURE EMPLOYMENT FOR SKILLED MEN

Vacancies exist for

**BORING MILL OPERATORS HORIZONTAL BORERS
BAR TURRET LATHE OPERATORS PLANERS
COMBINATION LATHE OPERATORS SLOTTERS
CENTRE LATHE TURNERS MACHINE TOOL SETTERS
MILLERS (Hor., Vert. & Univ.) SHEET METAL WORKERS
FITTERS MARKERS-OFF TESTERS**

Excellent conditions with good rate of pay including piecework and incentive bonuses.

Apply in person or in writing to Employment Department

**Metropolitan - Vickers Electrical
Company Limited**

TRAFFORD PARK, MANCHESTER 17

N.B. For the convenience of applicants the Employment Department will be open for interviews:

Tuesday, Wednesday and Thursday 8-30 a.m. — 6-30 p.m.
Saturday..... 8-30 a.m. — 12 noon
Monday and Friday..... 8-30 a.m. — 4-30 p.m.

ARSENAL v CITY**SATURDAY 2nd NOVEMBER****LONDON 30/-**

Depart	Friday	Saturday
Manchester	Night	Morning
London Rd	11-55 pm	8-10 am
Return London Euston 6-5 pm or 12-30 am		

**WOLVERHAMPTON 9/9****DUDLEY PORT 10/3 BIRMINGHAM 10/9****COVENTRY 13/-****SUNDAY 3rd NOVEMBER****MANCHESTER** London Road *depart 9-25 am*

Light Refreshments available