

PRICE 3D

PRESTON

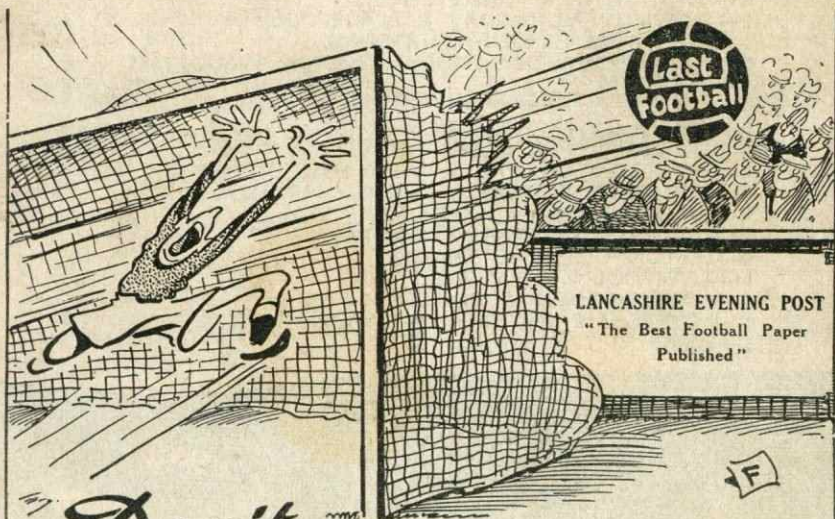
North End

FOOTBALL CLUB LTD

OFFICIAL PROGRAMME

No. 6

SATURDAY, OCTOBER 12th, 1957



Don't miss yours!

LUTON TOWN

Manager - - - - - MICHAEL KEEGAN

# EMPIRE HOTEL

TITHEBARN STREET, PRESTON

(Next to the Ribble Bus Station)

**C. & S. X-L ALES** *On Draught and in Bottle*

## FIRST DIVISION

- A—BIRMINGHAM v. WOLVERHAMPTON WANDERERS
- B—BURNLEY v. SUNDERLAND
- C—CHELSEA v. ASTON VILLA
- D—MANCHESTER CITY v. LEICESTER CITY
- E—NEWCASTLE UNITED v. EVERTON
- F—NOTTINGHAM FOREST v. MANCHESTER UNITED
- G—PORTSMOUTH v. LEEDS UNITED
- H—SHEFFIELD WEDNESDAY v. BLACKPOOL
- J—TOTTENHAM HOTSPUR v. ARSENAL
- K—WEST BROMWICH ALBION v. BOLTON WANDERERS

## SECOND DIVISION

- A—BRISTOL CITY v. BRISTOL ROVERS
- B—CARDIFF CITY v. DERBY COUNTY
- C—CHARLTON ATHLETIC v. WEST HAM UNITED
- D—DONCASTER ROVERS v. SHEFFIELD UNITED
- E—GRIMSBY TOWN v. NOTTS COUNTY
- F—HUDDERSFIELD TOWN v. IPSWICH
- G—LEYTON ORIENT v. BARNLEY
- H—LIVERPOOL v. SWANSEA TOWN
- J—MIDDLESBROUGH v. FULHAM
- K—ROTHERHAM UNITED v. BLACKBURN ROVERS
- L—STOKE CITY v. LINCOLN CITY

Kick off with

TENNANTS  
GOLD LABEL  
SPARKLING  
BARLEY WINE

TENNANT BROTHERS LTD · EXCHANGE BREWERY · SHEFFIELD 3

OFFICIAL JOURNAL of the

# PRESTON NORTH END F.C. LIMITED

Registered Office: DEEPDALE, PRESTON

Telephone 3818

Vice-President: E. BRADSHAW, Esq.

Chairman: N. BUCK, Esq.

Vice-Chairman: J. H. INGHAM, Esq.

Directors:

THE CHAIRMAN

VICE-CHAIRMAN

R. SMITH, Esq.

H. CARTMELL, Esq.

W. CROSS, Esq.

H. F. STENNING, Esq.

A. HARRISON, Esq.

W. MERCER, Esq.

R. ROBINSON, Esq.

Manager: Mr. C. S. BRITTON

Secretary: Mr. G. HOWARTH

## Club Notes

Away in a good start to the present season—our visitors this afternoon will be hoping for a non-recurrence of the pattern of things last campaign, when they enjoyed a bright beginning, then flattered to deceive with a steady decline. The slump was eventually called to a halt with the signing of Allan Brown, in February. In a matter of weeks they were here on their last visit, which was only their fourth in all—the first fifteen minutes proving vital with two rapid goals from Tommy Thompson and Tom Finney, sufficing to give North End a third victory over the Bedfordshire club in the four League clashes at Deepdale. Strange yet true is the fact that we have met the "Hatters" here so few times despite their 34 seasons in the Football League. First here in January, 1950, when they took the points in a 1-0 win—to be followed by three defeats in February, 1951, August, 1955, and on March 23rd this year when the teams lined up as follows: *North End*: Else: Cunningham, Walton; Docherty, Dunn, Evans; Dagger, Thompson, Finney, Baxter, Taylor. *Luton Town*: Baynham; McNally, Thompson; Morton, Owen, Smith; Cullen, Brown, Groves, Cummins, McLeod.

A reminder to patrons that on Tuesday evening next, the 15th October, kick-off 7-0 p.m., is the F.A. Youth Cup Tie between NORTH END and BOLTON WANDERERS, here at Deepdale. Admission: Ground 1/- Stand A 2/-

ENGLAND v. ROUMANIA (Under 23's) at Wembley Stadium, Wednesday next, October 16th. Kick-off 7-30 p.m. Tickets obtainable from Wembley Stadium at 25/-, 15/-, 10/-, 7/6 and 3/-

**Insurance** **GARRATT, SON & FLOWERDEW LTD.**  
Incorporated Insurance Brokers  
**85 FISHERGATE . PRESTON . Tel. 2626 (3 lines)**  
INSURANCE BROKERS TO THE PRESTON NORTH END FOOTBALL CLUB  
WE TRANSACT EVERY KIND OF INSURANCE & WELCOME YOUR ENQUIRIES

## FIRST DIVISION MARKSMEN

THOMPSON ..... (8)    TAYLOR ..... (7)    FINNEY ..... (6)    BAXTER..... (1)  
 MAYERS ..... (1)    DOCHERTY... (1)    DAGGER .....(1)

## FIRST TEAM APPEARANCES

Cup Games	G.	R.B.	L.B.	R.H.	C.H.	L.H.	O.R.	I.R.	C.F.	I.L.	O.L.
ELSE .....	11	—	—	—	—	—	—	—	—	—	—
CUNNINGHAM .....	—	11	—	—	—	—	—	—	—	—	—
WALTON .....	—	—	11	—	—	—	—	—	—	—	—
DOCHERTY .....	—	—	—	9	—	1	—	—	—	—	—
DUNN .....	—	—	—	—	10	—	—	—	—	—	—
O'FARRELL .....	—	—	—	—	1	10	—	—	—	—	—
DAGGER .....	—	—	—	—	—	—	8	—	—	—	—
THOMPSON .....	—	—	—	—	—	—	—	11	—	—	—
FINNEY .....	—	—	—	—	—	—	—	—	10	—	—
BAXTER .....	—	—	—	—	—	—	—	—	—	11	—
TAYLOR .....	—	—	—	—	—	—	—	—	—	—	11
MAYERS .....	—	—	—	—	—	—	3	—	—	—	—
MILNE .....	—	—	—	2	—	—	—	—	—	—	—
HATSELL .....	—	—	—	—	—	—	—	—	1	—	—

## WROUGHT IRON GATES and RAILINGS

For HOUSES  
SCHOOLS

FACTORIES  
PUBLIC BUILDINGS

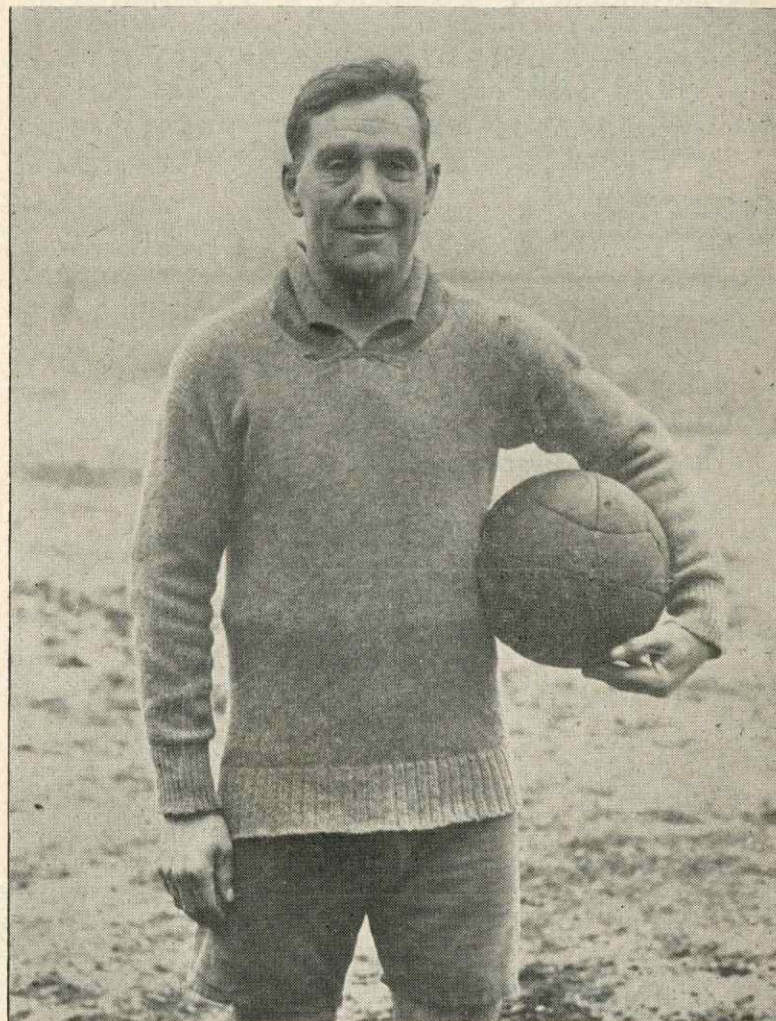
## PEEL HALL ENGINEERING Co.

Lincoln Street

PRESTON

Established 1920

Phone 2356



### MEMORY CORNER (No. 4)

The great Joe McCall, seen here during a Deepdale training session when in the twilight of a wonderful one-club career. Between 1906 and 1925 he made 445 League appearances for North End, and as one of England's best centre halves he was first capped in 1913 and lastly after the first World War, in 1921. Born near Kirkham, where he now lives retired in typical unassuming modesty.

BRICKMAKERS \* BUILDERS \* CONTRACTORS

**JOHN TURNER & SONS (Preston) Ltd.**  
**WILLIAM HENRY STREET, PRESTON**

CONTRACTORS TO  
 PRESTON NORTH END  
 PAVILION EXTENSION,  
 ETC., ETC.

TELEPHONE:  
 PRESTON 2867

Makers of Ribbleton  
 Briquettes—Obtainable  
 through your Coal Merchant

R Preston North End (white shirts, blue shorts) L

1 ELSE		3 WALTON	
2 CUNNINGHAM		6 O'FARRELL	
4 DOCHERTY	5 DUNN		
7 MAYERS	8 THOMPSON	9 FINNEY	10 BAXTER
		11 TAYLOR	
Referee: C. H. SANT (Crewe)		Linesmen: Red Flag—A. E. Ward Yellow Flag—H. Tonge	
Kick-off: 3-0 p.m.			
McLEOD	CUMMINS	BROWN	TURNER
11	10	9	8
PEARCE	OWEN	MORTON	
6	5	4	
JONES	DUNNE		
3	2		
BAYNHAM			
1			

L Luton Town (red shirts, white shorts) R

THE MAN WHO IS PARTICULAR ABOUT HIS RUM CHOOSES—

**ROBINSON'S "CRUSOE" RUM**  
 (DEMERARA)

T. L. ROBINSON LTD.  
 23 FRIARGATE, PRESTON  
 AND BRANCHES THROUGHOUT LANCS.

36/- per bottle. 18/9 per 1/2-Bottle. 9/9 per 1/4-Bottle. 3/8 per Miniature.

PROMPT COLLECTION AND DELIVERY IN PRESTON AND DISTRICT

**PRIM-PREST LAUNDRY SERVICE**

Central Laundry (Lancaster) Ltd.  
**CATON ROAD, LANCASTER**

Tel. : 2522 LANCASTER

BE ASSURED OF FIRST-CLASS WORK AT ECONOMICAL CHARGES  
 ASK FOR OUR VAN TO CALL

DO YOU REMEMBER THEM?

FIRST TEAM GOALKEEPERS since 1929-30 Season (League only)  
 (Twenty-one completed seasons)

Season	Division	Goalkeepers and number of appearances		
1929-30	2	Fawcett (37)	Ewart (4)	Foster (1)
1930-31	2	Hampton (37)	Fawcett (5)	
1931-32	2	Wolf (29)	Hughes (11)	Fawcett (2)
1932-33	2	Holdcroft (23)	Wolf (16)	Twist (3)
1933-34	2	Holdcroft (42)		
1934-35	1	Holdcroft (42)		
1935-36	1	Holdcroft (42)		
1936-37	1	Holdcroft (35)	Burns (7)	
1937-38	1	Holdcroft (37)	Burns (5)	
1938-39	1	Holdcroft (42)		
1946-47	1	Fairbrother (41)	Gooch (1)	
1947-48	1	Gooch (34)	Hall (7)	Hindle (1)
1948-49	1	Newlands (26)	Gooch (16)	
1949-50	2	Gooch (23)	Newlands (19)	
1950-51	2	Gooch (27)	Newlands (15)	
1951-52	1	Gooch (34)	Newlands (8)	
1952-53	1	Thompson (30)	Newlands (12)	
1953-54	1	Thompson (39)	Mitton (2)	Else (1)
1954-55	1	Thompson (37)	Else (5)	
1955-56	1	Thompson (34)	Else (8)	
1956-57	1	Else (42)		

SUMMARY

Holdcroft ... 263	Wolf ..... 45	Hughes ..... 11	Hindle ... 1
Thompson ... 140	Fawcett ..... 44	Hall ..... 7	Foster ..... 1
Gooch ..... 135	Fairbrother 41	Ewart ..... 4	
Newlands ... 80	Hampton ... 37	Twist ..... 3	
Else ..... 56	Burns ..... 12	Mitton ..... 2	

Next Programme : Right Full Backs over the same period.

For a Good Meal . . . .

**ROWNTREES RESTAURANT**  
 . . . . the IDEAL Place for Parties

\*LATE DINNERS \*GRILLS \*SUPPERS \*FULLY LICENSED  
 Open Daily from 9 a.m. until 11 p.m.  
**53 FISHERGATE, PRESTON**  
 (ONE MINUTE FROM PRESTON STATION)  
 Telephone: PRESTON 4411

# MEARS FOR MODERN FURNITURE

25, FRIARGATE PRESTON

A WALK-ROUND  
STORE  
● H.P. TERMS  
ARRANGED  
● PERSONAL SERVICE

## MEET THE OPPOSITION . . . .

Luton Town can feel pleased with the opening phase of their third season in the top flight, for they are immediately above North End in the League table (in seventh position) with a goals aggregate of 14-13, which paradoxically means that no other team in Division One can point to less goals for, and less goals against, than the "Hatters." Last Saturday they just beat Burnley at Luton by 3-2, after enjoying a three goals clear majority until near the end.

If all the eleven on duty last week have come through without mishap then we can expect to see the Birmingham-born **RON BAYNHAM** in goal—the well-built ex Worcester City custodian—three England caps to date.

Right full back **SEAMUS DUNNE**, as you would expect hails from Wicklow in Eire, joined Luton in 1950 from Shelbourne F.C. An Eire international. His partner on the left is the Welshman **LESLIE JONES**, born Mountain Ash, who has made his mark with the "Hatters," his only club of note. Big and strong defender.

Right half is the club versatility expert, **BOB MORTON**, a native of Aston Clinton, in Buckinghamshire, plays anywhere with equal facility. Joined Luton in 1946 from amateur club named Eaton Bray and Waterlows F.C. He has been honoured by England 'B' selection.

Giant in the middle of the halves is the skipper **SID OWEN**, former Birmingham City player where he was born. Three times England-capped and eleven years with Luton after a bargain fee signing. On his left is **REG PEARCE**, another of the

TIMPSON

## Football Boots

and FOOTBALLS

TIMPSON 'Knock-out,' 'Cert' and 'Pro' football boots are points ahead. Unbeatable at their prices. Boys' as well as men's. As supplied to leading clubs.

Timpson make first-class footballs, too. All sizes and types, at very keen prices. Get both at:—

**TIMPSON SHOE SHOP**  
MARKET PLACE, PRESTON

For your AUTO-  
ELECTRICAL  
WORK

call at

**TOM FINNEY**

(AUTO LIMITED)

79/91 HIGH ST., Preston  
Telephone 84396

## TOM FINNEY LTD.

★ ELECTRICAL ENGINEERS  
★ PLUMBING CONTRACTORS  
★ RE-WINDING SPECIALISTS

53 MOOR LANE, PRESTON

Telephone: Preston 57563/4

## LEEDS UNITED v. PRESTON

SATURDAY, 2nd NOVEMBER

### LEEDS 8/6

PRESTON depart 10-0 a.m. and 11-8 a.m.

CHORLEY depart 11-24 a.m.

Enquire for full details

BRITISH RAILWAYS

NEXT HOME GAMES

Tuesday next, 15th October.

Kick-off, 7-0 p.m.

F.A. YOUTH CUP TIE

**North End v. Bolton Wanderers**

Admission: Ground 1/- Juveniles 6d. Stand A 2/-

Saturday next, 19th October.

Kick-off, 3-0 p.m.

CENTRAL LEAGUE

**North End Res. v. Blackburn Rovers Res.**

## League Tables

### FIRST DIVISION

	P.	W.	D.	L.	Goals		
					F.	A.	Pts.
Wolves	12	8	2	2	32	14	18
West Brom. A.	12	6	5	1	30	15	17
Notts Forest	11	8	1	2	27	14	17
Manchester U.	11	7	1	3	32	17	15
Arsenal	11	7	1	3	21	13	15
Everton	9	6	2	1	17	21	14
Luton Town	11	6	1	4	14	13	13
<b>North End</b>	11	6	0	5	25	18	12
Bolton W.	11	5	2	4	18	16	12
Chelsea	11	4	3	4	25	23	11
Newcastle U.	11	4	2	5	15	14	10
Leeds U.	12	4	2	6	14	21	10
Manchester C.	10	5	0	5	22	31	10
Blackpool	10	4	1	5	17	16	9
Birmingham	12	3	3	6	18	29	8
Portsmouth	11	3	2	6	18	24	8
Aston Villa	12	3	2	7	16	24	8
Tottenham H.	12	3	2	7	25	34	8
Sunderland	12	3	2	7	15	29	8
Burnley	11	3	2	6	15	27	8
Sheffield W.	10	3	1	6	15	20	7
Leicester City	11	2	1	8	20	28	5

### CENTRAL LEAGUE

	P.	W.	D.	L.	Goals		
					F.	A.	Pts.
Manchester U.	9	6	2	1	32	14	14
Bury	9	6	1	2	21	10	13
Newcastle	9	6	0	3	15	12	12
Everton	7	4	1	2	21	11	10
Sheffield W.	7	4	2	1	15	6	10
Leeds U.	9	4	2	3	16	16	10
Wolves	9	4	2	3	13	13	10
Aston Villa	9	4	1	4	18	18	9
Barnsley	7	3	3	1	11	9	9
Chesterfield	8	4	1	3	13	12	9
Huddersfield	8	4	1	3	13	11	9
Liverpool	7	4	0	3	14	14	8
Sheffield U.	9	3	2	4	16	19	8
Manchester C.	9	4	0	5	18	12	8
Stoke City	9	3	1	5	9	13	7
Derby County	8	3	3	2	13	18	7
Blackburn R.	8	2	2	4	12	19	6
Burnley	11	3	0	8	10	24	6
<b>North End</b>	9	2	1	6	9	14	5
Bolton W.	8	2	1	5	9	15	5
Blackpool	8	1	3	4	9	18	5
West Brom. A.	9	2	1	6	16	25	5

Always Top of the League

SEE ALL THE NEW MODELS

**MORRIS - WOLSELEY**  
**M.G. - RILEY**

AT YOUR SPECIALISED NUFFIELD SALES & SERVICE DEPOT

**LOXHAMS**  
**MORRIS SERVICES LTD**

**PRESTON**

Corporation Street

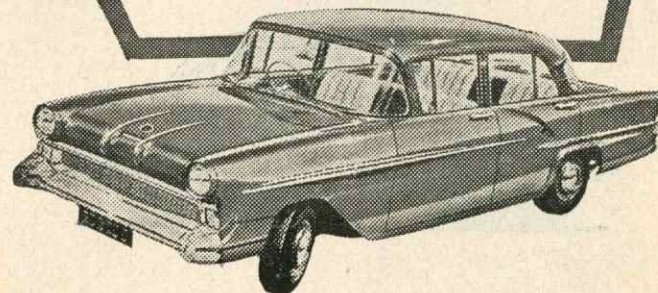
Telephone: 4247 (6 lines)

**BLACKBURN**

Sudell Cross

Telephone: 7116 (3 lines)

Tomorrow's car  
is here today!



*Vauxhall* **Victor**

Setting the style for years ahead, the Victor introduces the new low-swept line with panoramic windscreen and full-circle vision. There's *value* in every aspect of the Victor's very advanced design . . . in its new, low-swept good looks . . . its real *family* roominess . . . its wonderful *flat-ride* suspension and its *vivacious* performance. These advantages and many more in a car that's delightful to drive, easy to park and outstanding for petrol economy.

This is an exciting new car at an excitingly low price. See it in our showroom today.

**VICTOR Saloon £498 + P.T. £250.7.0**

**VICTOR Super £520 + P.T. £261.7.0**

**BARTON MOTORS**

**PRESTON**

Tel. 4664

— 10 Lines

SHOWROOMS OPEN 9-0 a.m. — 8-0 p.m.

# The new Consul



In the past few weeks we have noticed more clearly than ever a change in the pattern of new car purchases. There is yet another satisfying increase in demand for the **FORD** 5 Star range of new cars, i.e. **The CONSUL.**

**Price £545 plus P.T. £273/17/-**

Available for Demonstration at

**BRADSHAW'S**  
**FORD DEPOTS**

MAIN **FORD** DEALER

PRESTON 4083

CHORLEY 3745