

PRICE 3D

PRESTON

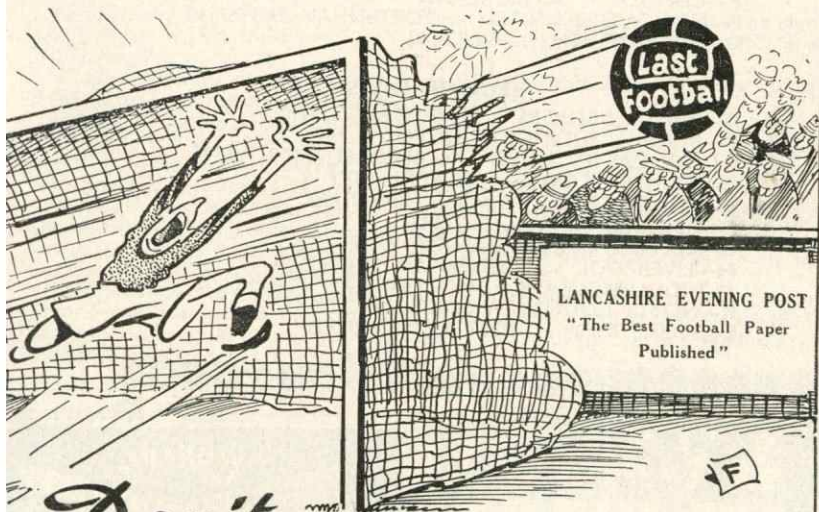
North End

FOOTBALL CLUB LTD

OFFICIAL PROGRAMME

No. 20

SATURDAY, MARCH 23rd, 1957



*Don't miss yours!*



Manager - - - - - MICHAEL KEEGAN

# EMPIRE HOTEL

TITHEBARN STREET, PRESTON  
(Next to the Ribble Bus Station)

**C. & S. X-L ALES** *On Draught and in Bottle*

## F.A. CUP—SEMI-FINALS

- A—MANCHESTER UNITED v. BIRMINGHAM CITY  
B—WEST BROMWICH ALBION v. ASTON VILLA

## FIRST DIVISION

- C—ARSENAL v. WOLVERHAMPTON WANDERERS  
D—CARDIFF CITY v. CHARLTON ATHLETIC  
E—CHELSEA v. SUNDERLAND  
F—NEWCASTLE UNITED v. TOTTENHAM HOTSPUR  
G—PORTSMOUTH v. EVERTON

## SECOND DIVISION

- A—BRISTOL ROVERS v. SWANSEA TOWN  
B—BURY v. SHEFFIELD UNITED  
C—DONCASTER ROVERS v. BLACKBURN ROVERS  
D—GRIMSBY TOWN v. BRISTOL CITY  
E—HUDDERSFIELD TOWN v. BARNLEY  
F—LEICESTER CITY v. FULHAM  
G—LEYTON ORIENT v. PORT VALE  
H—LIVERPOOL v. ROTHERHAM UNITED  
J—MIDDLESBROUGH v. NOTTINGHAM FOREST  
K—NOTTS COUNTY v. LINCOLN CITY  
L—STOKE CITY v. WEST HAM UNITED

**CHEERS!**  
**FOR THE DRINK**  
**THAT'S DIFFERENT**

TENNANT BROTHERS LTD. • EXCHANGE BREWERY  
SHEFFIELD



OFFICIAL JOURNAL of the

# PRESTON NORTH END F.C. LIMITED

Registered Office: DEEPDALE, PRESTON

Telephone 3813

Vice-President: E. BRADSHAW, Esq.

Chairman: N. BUCK, Esq.

Vice-Chairman: J. H. INGHAM, Esq.

Directors:

THE CHAIRMAN

VICE-CHAIRMAN

R. SMITH, Esq.

H. CARTMELL, Esq.

W. CROSS, Esq.

H. F. STENNING, Esq.

A. HARRISON, Esq.

W. MERCER, Esq.

R. ROBINSON, Esq.

Manager: Mr. C. S. BRITTON

Secretary: Mr. G. HOWARTH

## CLUB NOTES

Luton Town are comparative strangers to the Deepdale scene with only three previous League engagements on this ground, despite the fact that the present season is their 33rd as members of the Football League competition, and the 30th without a break.

Actually, our association with them goes back to February 2nd, 1895, when we visited Luton in the First Round of the F.A. Cup tournament, yet here at Deepdale we have been favoured with but three Luton visits, all in the League and all as recently as 1950, 1951 and 1955.

Paradoxically, the 'Hatters' ancestry dates back seventy-two years, as the club was founded in 1885 from two Luton organisations known as Excelsior F.C. and Wanderers F.C.

Of mutual interest concerning the bygone days is the matter of professional status being forced upon the reluctant supreme ruling body.

In 1891, Luton pioneered this movement in the South of England, several years after North End had played a similarly successful role in the North. They gained admission to the Football League (Division Two) in 1897, but after two seasons they were not re-elected and so returned to the Southern League.

When the Football League Third Division South was formed for season 1920-21 Luton Town were one of the 22 clubs elected. Champions in season 1936-37 with further promotion to Division One in 1955 when the Bedfordshire club sampled top class football for the first time in their history.

Their visit this afternoon provides us with an opportunity to increase our League victories this season to 19, remembering that our previous best in League One is 21 wins in 1953, and that following to-day we still have Wolves, Sheffield Wednesday, Blackpool and Chelsea to visit Deepdale.

**Insurance**

**GARRATT, SON & FLOWERDEW LTD.**

Incorporated Insurance Brokers

**85 FISHERGATE . PRESTON . Tel. 2626 (3 lines)**

INSURANCE BROKERS TO THE PRESTON NORTH END FOOTBALL CLUB  
WE TRANSACT EVERY KIND OF INSURANCE & WELCOME YOUR ENQUIRIES



## FIRST DIVISION MARKSMEN

THOMPSON .....	24 (3)	FINNEY .....	22 (5)	TAYLOR .....	11 (3)
BAXTER.....	8 (1)	HATSELL .....	2	O'FARRELL .....	1 (1)
DAGGER .....	2 (2)	WATERHOUSE .....	1	FOSTER .....	2
CARDIFF CITY (o.g.)	2	(Cup goals in parentheses)		BURNLEY (o.g.) .....	1

## FIRST TEAM APPEARANCES

Cup games		G	R.B.	L.B.	R.H.	C.H.	L.H.	O.R.	I.R.	C.F.	I.L.	O.L.
6	ELSE .....	34	—	—	—	—	—	—	—	—	—	—
6	CUNNINGHAM .....	—	33	—	—	—	—	—	—	—	—	—
	WILSON.....	—	1	—	—	—	—	—	—	—	—	—
6	WALTON .....	—	—	34	—	—	—	—	—	—	—	—
6	DOCHERTY .....	—	—	—	30	—	—	—	—	—	—	—
5	DUNN .....	—	—	—	—	33	—	—	—	—	—	—
1	MATTINSON .....	—	—	—	—	1	4	—	—	—	—	—
6	FINNEY .....	—	—	—	—	—	—	3	—	27	—	—
	CAMPBELL .....	—	—	—	—	—	—	13	—	—	—	—
5	THOMPSON .....	—	—	—	—	—	—	—	31	—	—	—
1	WATERHOUSE .....	—	—	—	—	—	—	—	3	—	—	—
	HATSELL .....	—	—	—	—	—	—	—	—	6	—	—
	LEWIS.....	—	—	—	—	—	—	—	—	1	—	—
6	BAXTER .....	—	—	—	—	—	—	—	—	—	32	—
	MORRISON .....	—	—	—	—	—	—	—	—	—	—	4
6	TAYLOR .....	—	—	—	—	—	—	—	—	—	—	30
	EVANS .....	—	—	—	—	—	17	—	—	—	—	—
	MILNE.....	—	—	—	4	—	—	—	—	—	—	—
6	DAGGER .....	—	—	—	—	—	—	18	—	—	—	—
6	O'FARRELL .....	—	—	—	—	—	13	—	—	—	—	—
	FOSTER.....	—	—	—	—	—	—	—	—	—	2	—

## WROUGHT IRON GATES and RAILINGS

For HOUSES  
SCHOOLS

FACTORIES  
PUBLIC BUILDINGS

## PEEL HALL ENGINEERING Co.

Lincoln Street

PRESTON

Phone 2356

Established 1920

## SOCKET HEAD SCREWS

Send for illustrated leaflet to the Specialist Distributors

## OLIVERS SOCKET SCREWS LTD.

Mount Pleasant, LEYLAND, Lancs.

Phone 81269 (2 lines)

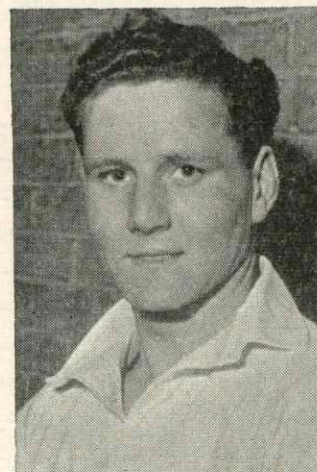


### RAY EVANS

Although born in India over 23 years ago, is a product of Preston schools football, graduating via North End juniors to his first senior game which happened to be the Floodlit Charity game with Arsenal at Highbury on October 1st, 1953, proceeds to the dependents of the late Alex James and Derek Lewis. This was quick promotion for Ray as three weeks previously he was playing for North End's third team.

His initial first team appearance was at inside right, and two days later, on Oct. 3rd, he made his League debut at Arsenal, this time at inside left.

In his 31 League games, he has played in all three inside forward positions and also as left half back, his present berth.



## SCOUT MOTOR SERVICES LTD.

LUXURIOUS SALOON COACHES

FOR PRIVATE HIRE

Telephone :  
3021

STARCHHOUSE SQUARE GARAGE  
PRESTON



## LEAGUE APPEARANCES MADE AND GOALS SCORED BY THE PLAYING STAFF

(UP TO END OF LAST SEASON)

	1946 -47	1947 -48	1948 -49	1949 -50	1950 -51	1951 -52	1952 -53	1953 -54	1954 -55	1955 -56	Total Appear- ances	Total goals scored
Finney .....	32	33	24	37	34	33	34	23	30	32	312	115
Walton .....	—	11	38	32	16	8	14	37	38	39	233	2
Morrison .....	—	—	19	23	42	42	42	35	33	19	255	69
Mattinson .....	—	—	2	12	28	—	—	27	7	27	103	—
Cunningham ..	—	—	—	30	31	42	41	30	24	24	222	1
Docherty .....	—	—	—	15	42	42	41	26	39	41	246	4
Dunn .....	—	—	—	—	—	13	25	21	3	21	83	2
Foster .....	—	—	—	—	—	17	11	27	28	15	98	39
Baxter .....	—	—	—	—	—	—	33	42	39	29	143	46
Wilson .....	—	—	—	—	—	—	1	4	21	24	50	—
Campbell .....	—	—	—	—	—	—	—	13	11	13	37	2
Hatsell .....	—	—	—	—	—	—	—	17	17	23	57	30
Evans .....	—	—	—	—	—	—	—	3	2	9	14	2
Else .....	—	—	—	—	—	—	—	1	5	8	14	—
Waterhouse ..	—	—	—	—	—	—	—	1	8	6	15	4
Thompson .....	—	—	—	—	—	—	—	—	—	42	42	23
Taylor .....	—	—	—	—	—	—	—	—	—	15	15	2
Lewis .....	—	—	—	—	—	—	—	—	—	11	11	2

REMOVALS

# A. BOAST & CO.

FOR

## REASONABLE RELIABLE REMOVALS

LARGE OR SMALL VANS ALWAYS AVAILABLE

Let us quote you

LONG DISTANCE A SPECIALITY

All enquiries receive prompt attention

## Empire Garage, Derby Street, Preston

PETROL, OILS AND SERVICING

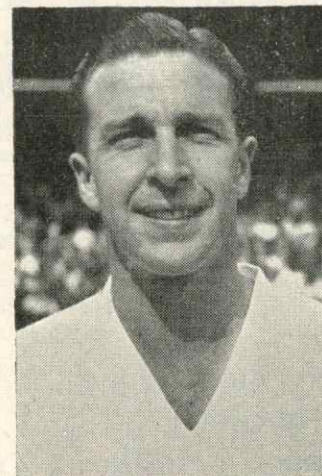
Phone 4609

Night Phone: Preston Priory 83694



**RON BAYNHAM**

Born in the City which regularly produces top notch goalkeepers, Birmingham. One of two England custodians on the Luton Town staff.



**BOB MORTON**

The play anywhere type, and a valuable local discovery. Now at wing half, but a prolific centre forward goal getter when the needs be.



**ALLAN BROWN**

Fourteen Scottish international appearances when with Blackpool. Originally a wing half with East Fife in Scotland, capped in both positions.



**SID OWEN**

The thrice England capped red haired skipper of Luton Town. Played at Deepdale in all the 'Hatters' previous three League games.



BRICKMAKERS \* BUILDERS \* CONTRACTORS

# JOHN TURNER & SONS (Preston) Ltd.

WILLIAM HENRY STREET, PRESTON

CONTRACTORS TO  
PRESTON NORTH END  
PAVILION EXTENSION,  
ETC., ETC.

TELEPHONE:  
PRESTON 2867

Makers of Ribbleton  
Briquettes—Obtainable  
through your Coal Merchant

R Preston North End (white shirts, blue shorts) L

1 ELSE

2 CUNNINGHAM

3 WALTON

4 DOCHERTY

5 DUNN

6 EVANS

7 DAGGER

8 THOMPSON

9 FINNEY

10 BAXTER

11 TAYLOR

Referee:  
F. L. OVERTON  
(Derby)

Kick-off: 3.0 p.m.

**NEWS OF THE WORLD**

Linesmen:  
Red Flag—J. A. Cattlin  
Yellow Flag—J. Dillon

McLEOD 11

CUMMINS 10

GROVES 9

BROWN 8

CULLEN 7

SMITH 6

OWEN 5

MORTON 4

McNALLY 3

JONES 2

BAYNHAM 1

L Luton Town (Red shirts, white shorts) R

LIQUID DEMERARA SUNSHINE FOR THE MAN WHO UNDERSTANDS RUM

## ROBINSON'S "CRUSOE" RUM

Shipped, Bonded, Blended and Bottled by:  
T. L. ROBINSON LTD.  
23 FRIARGATE, PRESTON  
AND BRANCHES THROUGHOUT LANCs.

36/- per Bottle

18/9 per ½-Bottle

PROMPT COLLECTION AND DELIVERY IN PRESTON AND DISTRICT

# PRIM-PREST LAUNDRY SERVICE

Central Laundry (Lancaster) Ltd.

**CATON ROAD, LANCASTER**

Tel. : 2522 LANCASTER

BE ASSURED OF FIRST-CLASS WORK AT ECONOMICAL CHARGES  
ASK FOR OUR VAN TO CALL

## "THE HATTERS"

Luton Town's first excursion to this ground was in January, 1950, in the Second Division days, when they administered a shock defeat on a bone hard ground by the only goal scored, in a disastrous slump period for North End which included the Watford Cup replay debacle, which against Luton counted for six consecutive games without a win and goalless in five of them.

North End: Newlands: Walton, Cunningham: Horton, Waters, Forbes: Finney, Ramscar, Morrison, Knight, Anders:

Luton Town: Hughes: Aherne, Cooke: Watkins, Owen, Gardiner: Glover, Kiernan, Shanks, Taylor, Waugh.

In the next season, we managed to turn the tables in February, 1951, in a hard tussle in which Ken Horton's 28th minute goal sufficed to win the points:—

North End: Gooch: Cunningham, Scott: Docherty, Marston, Forbes: Finney, Horton, Wayman, Beattie, Morrison.

Luton Town: Streten: Cooke, Aherne: Morton, Owen, McAuley: Glover, Stobbart, Taylor, Davie, Havenga.

Fresh to League One the 'Hatters' visited us in oven-like heat on Wednesday evening, August 24th, 1955, at the opening of last season's activities, and impressed with a snappy clean cut display, to be reckoned unlucky losers by the odd goal in three. They led at halftime, Bobby Foster equalising three minutes after the interval, and Tommy Thompson's crashing shot with 13 mins. left for play, came down from the crossbar to drop over line on the wrong side for our plucky visitors.

North End: Thompson (G.): Wilson, Walton: Docherty, Mattinson, Forbes: Finney, Thompson (T.), Hatsell, Foster, Morrison.

Luton Town: Baynham: Dunne, Aherne: Morton, Owen, Shanks: Davies, Turner, McEwan, Cummins, Taylor.

For a Good Meal . . . .

## ROWNTREES RESTAURANT

. . . . the IDEAL Place for Parties

\*LATE DINNERS \*GRILLS \*SUPPERS \*FULLY LICENSED

Open Daily from 9 a.m. until 11 p.m.

53 FISHERGATE, PRESTON

(ONE MINUTE FROM PRESTON STATION)  
Telephone : PRESTON 4411

3 PALL MALL, MANCHESTER

(OFF MARKET STREET)

Telephone : DEAnsgate 6060



# MEARS FOR MODERN FURNITURE

25, FRIARGATE PRESTON

A WALK-ROUND  
STORE  
• H.P. TERMS  
ARRANGED  
• PERSONAL SERVICE

## MEET THE OPPOSITION . . . .

In recent weeks Luton Town have effected a recovery from a slump in their playing fortunes, a revival that coincided with the acquisition of Allan Brown from Blackpool. Prior to last Saturday's home reverse against Burnley, Luton had gained seven points from a possible ten in an all out bid to strengthen their hold on First Division status.

We shall very likely see **RON BAYNHAM** in goal, the Birmingham born former Worcester City keeper, sheer brilliance has already earned him several England caps. At right back we have the Welsh born **LESLIE JONES**, a big and strong defender, who vies for this position with Eire born **SEAMUS DUNNE**, who hails from Wicklow, playing in Eire for Drogheda United and Shelbourne, moving to Luton in 1951. An Eire international player.

At left back is another Irishman and former Shelbourne player in **JOHN McNALLY**, the 22 years old Dublin born, transferred from Shelbourne F.C. last May. On the right in the half back line is **BOB MORTON**, ideal club versatility expert, plays wing half, centre half or centre forward all with equal success. Born Aston Clinton, Buckinghamshire, discovered with amateur junior outfit called Eaton Bray and Waterlows F.C. Signed for Luton way back in 1946, has England 'B' honours. In the middle is the giant pivot and England player **SID OWEN**, captain of the 'Hatters' and king pin of the defence. Birmingham born former Birmingham

TIMPSON

**Football  
Boots**

and FOOTBALLS

TIMPSON 'Knock-out,' 'Cert' and 'Pro' football boots are points ahead. Unbeatable at their prices. Boys' as well as men's. As supplied to leading clubs.

Timpson make first-class footballs, too. All sizes and types, at very keen prices. Get both at:—

**TIMPSON SHOE SHOP**  
MARKET PLACE, PRESTON

TELEPHONE 57322

## Cunningham & Forbes

◀ SPORTS OUTFITTERS ▶

47 CHURCH STREET • PRESTON

*Specialists in all Sports equipment*

OFFICIAL SUPPLIERS TO PRESTON NORTH END F.C. LTD.

City F.C. player, cost Luton a modest fee ten years ago. Left half is the 27 years old **RAYMOND SMITH**, born Coxhoe, County Durham, joined Luton in February, 1950, from Evenwood Juniors F.C., Durham. On the right wing is the tricky Scot **MIKE CULLEN**, plays on either flank, capped last season by Scotland against Austria. Joined his present club from Douglasdale Juniors F.C. in Scotland in 1952. Inside right and well known to Deepdale fans is burly **ALLAN BROWN**, a very recent signing from Blackpool. Cost the Seasiders a stiff fee from East Fife in 1950, missed two F.A. Cup Finals because of injuries, Scottish international, exceptionally strong on the ball, at his best in the heavy going. Missed a penalty last Saturday against Burnley. Centre forward in current favour is the 23 years old **JOHN GROVES**, born at Worksop, snapped up by Luton in October, 1950, straight from Derby schools football circles. If **GORDON TURNER** is fit again, he is certain of inclusion, if only for the fact that this season he has scored no less than 25 League goals. Has Football League honours and was formerly with Hull City, the son of a one time Hull City winger. Spotted in Royal Naval soccer, is a free scoring menace to any defence.

Inside left is **GEORGE CUMMINS**, the third Eire born player in the side, he was born in Dublin's fair city and was with Everton prior to moving south for a big fee in 1953. Clever ball player with several Eire caps. His left wing partner at the moment appears to be the 24 years old Scot **GEORGE McLEOD**, signed from his native Inverness club in January, 1955.

## ★ DAY AND NIGHT SERVICE

Tel. 3071

The Latest **WOLSELEY** and **HUMBER** LIMOUSINES for Weddings

Special Quotations for PARTIES TO AWAY MATCHES

**J. J. MILLER & SONS**

2 GARSTANG ROAD, PRESTON

**TAXIS and PRIVATE HIRE CARS**

Prices to suit everyone



## FIXTURES and RESULTS

FIRST TEAM		CENTRAL LEAGUE	
Kick-off	1956	Kick-off	1956
3.0	Aug. 18—Tottenham Hotspur .h	1	4
7.0	" 20—Manchester United .h	1	3
"	" 25—Chelsea .a	0	1
"	" 29—Manchester United .a	2	3
3.0	Sept. 1—Cardiff City .h	6	0
"	" 4—Arsenal .a	2	1
"	" 8—Birmingham City .a	0	3
7.0	" 10—Arsenal .h	3	0
3.0	" 15—West Bromwich A. .h	3	2
"	" 22—Portsmouth .a	2	2
3.0	" 29—Newcastle United .h	1	0
3.0	Oct. 6—Everton .h	0	0
"	" 13—Blackpool .a	0	4
3.0	" 20—Bolton Wanderers .h	2	2
"	" 27—Leeds United .a	2	1
3.0	Nov. 3—Sunderland .h	6	0
"	" 10—Luton Town .a	1	1
2.30	" 17—(1) Aston Villa .h	3	3
"	" 24—Wolverhampton W. .a	3	4
3.0	Dec. 1—Manchester City .h	3	1
"	" 8—(2) Charlton Athletic .a	4	3
"	" 15—Tottenham Hotspur .a	1	1
"	" 25—Burnley .a	2	2
3.0	" 26—Burnley .h	1	0
"	" 29—Cardiff City .a	3	2
1957	Jan. 5—(3) Sheffield W. .h	0	0
"	" 9—(3) Sheffield W. .a	2	2
"	" 12—Birmingham C. .h	1	0
"	" 14—(3) Sheffield W. .a	5	1
"	" 19—W. Brom. .a	0	0
"	" 26—(4) Bristol Rovers .a	4	1
3.0	Feb. 2—Portsmouth .h	7	1
"	" 9—Newcastle United .a	2	1
"	" 16—(5) Arsenal .h	3	3
"	" 19—(5) Arsenal .a	1	2
3.0	" 23—Leeds United .h	3	0
"	" 27—Everton .a	4	1
Mar.	" 2—(6) Bolton Wndrds .a	3	2
3.0	" 9—Charlton Athletic .h	4	3
"	" 16—Sunderland .a	0	0
3.0	" 23—(S.F.) Luton Town .h		
"	" 30—Aston Villa .a		
3.0	Apr. 6—Wolverhampton W. .h		
"	" 13—Manchester City .a		
11.0	" 19—Sheffield Wed. .h		
3.0	" 20—Blackpool .h		
"	" 22—Sheffield Wed. .a		
Kick-off	1956	Kick-off	1956
Aug. 18—Huddersfield Town .a	1	1	
" 20—Manchester United .a	0	6	
3.0	" 25—Bury .h	2	1
7.0	" 27—Manchester United .h	1	3
Sept. 1—Stoke City .a	0	3	
" 8—Chesterfield .h	3	1	
" 10—Blackpool .a	0	2	
" 15—West Bromwich A. .a	1	5	
7.0	" 17—Blackpool .h	2	1
3.0	" 22—Newcastle United .h	0	1
" 29—Sheffield Wednesday .a	0	2	
Oct. 6—Everton .a	0	3	
3.0	" 13—Leeds United .h	4	2
" 20—Bolton Wanderers .a	2	4	
" 27—Aston Villa .h	2	1	
Nov. 3—Derby County .a	0	2	
3.0	" 10—Wolverhampton W. .h	2	1
" 17—Barnsley .a	3	2	
3.0	" 24—Sheffield United .h	2	0
Dec. 1—Manchester City .a	1	1	
" 8—Blackburn Rovers .h	3	0	
" 15—Huddersfield Town .h	5	4	
3.0	" 25—		
" 26—Burnley .a	2	4	
3.0	" 29—Stoke City .h	2	1
1957			
Jan. 5—Liverpool .a	1	5	
" 12—Chesterfield .a	2	3	
2.45	" 19—West Bromwich A. .h	3	3
" 26—Burnley .h	1	1	
Feb. 2—Newcastle United .a	2	1	
" 9—Sheffield Wednesday .h	3	7	
" 23—Leeds United .a	4	2	
3.0	Mar. 2—Bolton Wanderers .h	1	3
" 9—Aston Villa .a	3	3	
" 16—Derby County .h	1	3	
3.0	" 23—Wolverhampton W. .a		
" 30—Barnsley .h			
Apr. 6—Sheffield United .a			
" 13—Manchester City .h			
" 20—Blackburn Rovers .a			
3.0	" 27—Liverpool .h		
May 4—			

### PRESTON'S PREMIER HOTEL

Opposite Railway Station

## VICTORIA & STATION HOTEL, PRESTON

FULLY LICENSED

Bedrooms with Running Hot and Cold Water

Football enthusiasts specially catered for

BANQUETS FROM 10 TO 250 IN PRIVATE ROOMS A SPECIALITY

Phones: Manager's Office 4632 (Private Branch Exchange)

Visitors 378011

**C. & S. FAMOUS 'XL' ALES on draught and in bottle**

RESIDENT MANAGER: HUGH CATTRALL

For your AUTO-ELECTRICAL WORK

call at

**TOM FINNEY**

(AUTO LIMITED)

79/91 HIGH ST., Preston

Telephone 84396

**TOM FINNEY LTD.**

- ★ ELECTRICAL ENGINEERS
- ★ PLUMBING CONTRACTORS
- ★ RE-WINDING SPECIALISTS

**53 MOOR LANE, PRESTON**

Telephone: Preston 57563/4

## ASTON VILLA v. PRESTON

SATURDAY, 30th MARCH

**BIRMINGHAM 14/-**

Preston depart 8.50 a.m. and 11.0 a.m.

Birmingham New St. return 6.25 p.m. or 8.20 p.m.

Enquire for changing points

BRITISH RAILWAYS

NEXT HOME GAMES

Saturday next, March 30th.

CENTRAL LEAGUE

Kick-off, 3-0 p.m.

**North End Res. v. Barnsley Res.**

Saturday, April 6th.

FIRST DIVISION

Kick-off, 3-0 p.m.

**NORTH END v. WOLVERHAMPTON W.**



# League Tables

## FIRST DIVISION

	P.	W.	D.	L.	Goals F. A.	Pts.
Manchester U. ....	33	22	6	5	86 47	50
North End .....	34	18	9	7	76 51	45
Tottenham H. ....	33	18	8	7	84 47	44
Blackpool .....	33	18	7	8	78 55	43
Wolves .....	34	17	7	10	83 60	41
Arsenal .....	34	17	6	11	72 60	40
Leeds U. ....	35	13	13	9	63 40	39
Bolton W. ....	34	14	9	11	55 37	37
Burnley .....	33	13	10	10	47 38	36
W. Brom. A. ....	32	12	10	10	48 44	34
Newcastle U. ....	35	13	7	15	58 70	33
Birmingham .....	32	13	6	13	55 51	32
Aston Villa .....	31	9	13	9	45 41	31
Chelsea .....	34	9	12	13	55 64	30
Everton .....	34	12	6	16	48 64	30
Sheffield W. ....	33	12	4	17	65 74	28
Luton T. ....	31	11	6	15	51 62	28
Manchester C. ....	34	10	7	17	64 74	27
Cardiff City .....	33	9	6	18	47 75	24
Portsmouth .....	31	5	12	14	50 76	22
Sunderland .....	33	8	6	19	54 74	22
Charlton Ath. ....	35	7	2	26	51 104	16

## CENTRAL LEAGUE

	P.	W.	D.	L.	Goals F. A.	Pts.
Sheffield W. ....	33	22	7	4	80 38	51
Liverpool .....	33	21	6	6	83 46	48
Manchester U. ....	31	17	7	7	76 42	41
Everton .....	33	18	5	10	74 48	41
Manchester C. ....	34	16	9	9	78 59	41
Huddersfield .....	33	16	8	9	71 58	40
Stoke City .....	33	13	8	12	51 51	34
Sheffield U. ....	32	13	8	11	48 48	34
Wolves .....	32	12	8	12	78 66	32
Derby C. ....	32	14	5	13	64 60	33
Newcastle U. ....	32	12	8	12	69 63	32
Blackpool .....	34	13	5	16	63 59	31
Bolton W. ....	33	12	7	14	58 65	31
North End .....	34	13	5	16	59 82	31
Burnley .....	34	10	9	15	49 66	29
Blackburn R. ....	32	10	8	14	47 61	28
West. Brom. ....	33	9	8	16	66 71	26
Aston Villa .....	29	10	6	13	52 57	26
Bury .....	32	9	5	18	36 56	23
Leeds U. ....	32	8	7	17	37 68	23
Barnsley .....	31	5	8	18	40 81	18
Chesterfield .....	30	5	7	18	40 76	17

(Up to and including Tuesday, 19th March).

*Always Top of the League*

SEE ALL THE NEW MODELS

**MORRIS - WOLSELEY**  
**M.G. - RILEY**

AT YOUR SPECIALISED NUFFIELD SALES & SERVICE DEPOT

**LOXHAMS**  
**MORRIS SERVICES LTD**

**PRESTON**

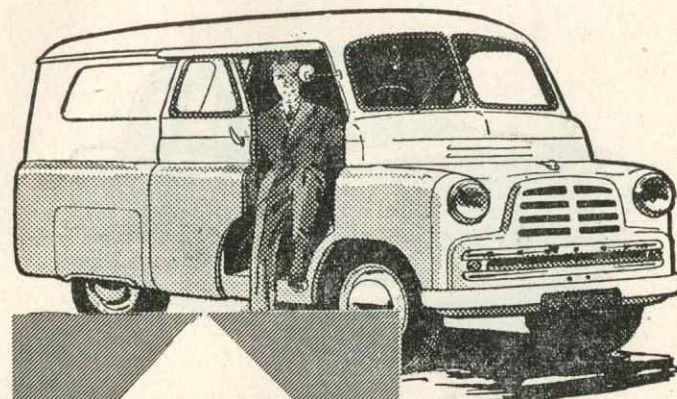
Corporation Street

Telephone : 4247 (6 lines)

**BLACKBURN**

Sudell Cross

Telephone : 7116 (3 lines)



**'OPEN  
SESAME'  
DOORS**

**Bedford**  
**10/12 cwt.**  
**van for**  
**speedier calls**

£420 Plus £74.18.9. P.T.

Its easy to step in or out of either front door. These doors slide smoothly on the outside of the body, clear of the load and they can be locked open for house to house delivery. 135 cubic feet of load space. Turning circle 35 ft. Petrol-saving "square" engine. Let us show you this easy-to-load, easy-to-handle van.

**Early delivery from**

**BARTON'S**

New Showrooms

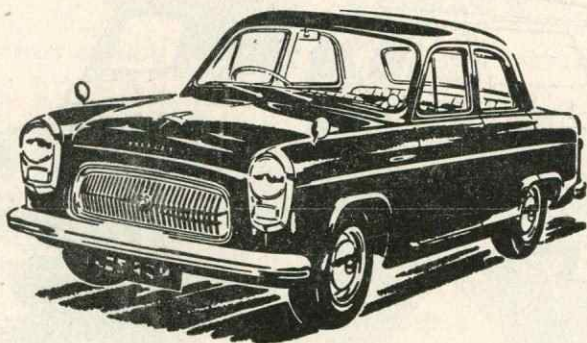
**PRESTON**

Tel. 4664

10 Lines

SHOWROOMS OPEN 9-0 a.m. — 8-0 p.m.





## *All aboard*

The Ford Prefect de Luxe is the ideal 4-door family car to choose. There is plenty of room in the gaily upholstered interior for a family of four. All their luggage goes into the wide, deep boot. Style, good looks and lower running costs make every owner a contented driver.

**Prefect de luxe and Prefect**

*And our Ford Service too*

**BRADSHAW'S**  
**FORD DEPOTS**

PRESTON 4083

CHORLEY 3745