

OFFICIAL PROGRAMME

4<sup>p</sup>

# EVERTON FOOTBALL CLUB

GOODISON PARK. LIVERPOOL



FOOTBALL LEAGUE MATCH

— — — — —  
**Everton v. Luton Town**

Saturday, 19th January, 1957

Kick-off 2-45 p.m.



## EVERTON FOOTBALL CLUB CO. LTD.

Chairman : R. E. SEARLE.

Vice-Chairman : T. C. NUTTALL.

E. GREEN, J. C. SHARP, N. W. COFFEY,  
C. E. BALMFORTH, F. MICKLESFIELD,  
C. H. ASKHAM, J. TAYLOR.

Secretary : W. DICKINSON.

Chief Coach: IAN C. BUCHAN. Admin. Officer (Playing Staff): H. R. PICKERING.

## EVERTONIA

### OUR VISITORS.

Welcome to Luton Town F.C. on their visit to Goodison Park today.

After winning promotion in season 1954-55, our Luton friends held their own in the 1st Division last season and finished in a respectable position, gaining 42 points from the 42 matches played.

They also made a promising start this season but have not been so successful latterly. At present they are lying 17th in the League Table having taken 21 points from 24 games played to date.

### AT ASTON VILLA.

Villa Park may have been one of our lucky grounds in the past but last Saturday Villa dispelled our optimistic outlook on this game and gave an impressive display in defeating us 5—1.

Only during one short period did we give the impression that we might pull the game out of the fire. This was when we made the score 2—1, and, shortly afterwards, had another 'goal' by Jimmy Harris disallowed. Quite rightly, the referee ruled that the ball had crossed the line before John Tomlinson made his centre.

For the most part, however, Villa were in control and deserved their winning margin.

### CUP-TIE TICKETS.

For our home tie versus West Ham United to be played at Goodison Park, on Saturday, 26th January, 1957, tickets are being reserved only for SHAREHOLDERS, SEASON TICKET HOLDERS and the VISITING CLUB. Prices will be as follows:— MEMBERS STAND and SHAREHOLDERS STAND and the CENTRE of GOODISON ROAD STAND 7/6 the NORTH END and SOUTH END of BULLENS ROAD and the WINGS of GOODISON ROAD STAND 6/-.

Shareholders will be entitled to two tickets each, and Season Ticket holders will be entitled to one ticket each. These must be applied for by post enclosing correct remittance, the 4th round Cup Tie voucher from the Season Ticket and stamped addressed envelope, not later than Monday, 21st January. The outside of the envelope containing the application should be marked "Shareholder" or "Season Ticket Holder" as the case may be. As the visiting club take a quota from all sections of the stands, there is no guarantee that all ticket holders will be allocated seats in their usual section.

Bullems Road (North End) Season Ticket holders are advised to apply for tickets at 6/- each.

For the general public there will be approximately 7,000 seats available on the day of the match for cash at the turnstiles at 5/- each, together with the paddock at 3/6 and the ground at 2/-.

## LUTON TOWN

Football owes almost as much to the progressive, far-sighted Luton Town whom we welcome back to Goodison Park today as it does to ourselves, for just as Everton in 1885 were the northern pioneers of professionalism, it was Luton Town who five years later did precisely the same thing in the south. Fact. Luton paid 5s. a week to a few players and the next season paid all players 2s. 6d. a week with sixpence extra for away games. It was a small start, but it had much to do with the general acceptance of the professionalism which has made football the great national game it is today.

We take our hats off to Luton for that effort and that would in fact be appropriate for Luton who used to be known as the "Strawplaiters" are now known by the shorter name of "Hatters." In another respect the clubs are similar for each in its early days were among the few clubs ever to include pink in their colours. Everton's we know was just a pink, but Luton, like Southend United and Portsmouth favoured salmon pink, a colour no club uses at the moment. Luton who used to include caps among their official "uniform" wore the pink with blue (in halves), but then changed to blue jerseys with a lighter blue band around the lower half. It was only following the first world war that Town adopted the present white jerseys and black knickers. By that time Town had settled down after their early struggles. The club was formed in 1885 by the fusion of two local clubs, entered the old Southern League which at that time had no working arrangement with the Football League. That is why so many First Division players, and stars at that, went to Southern League clubs without any transfer fees whatever.

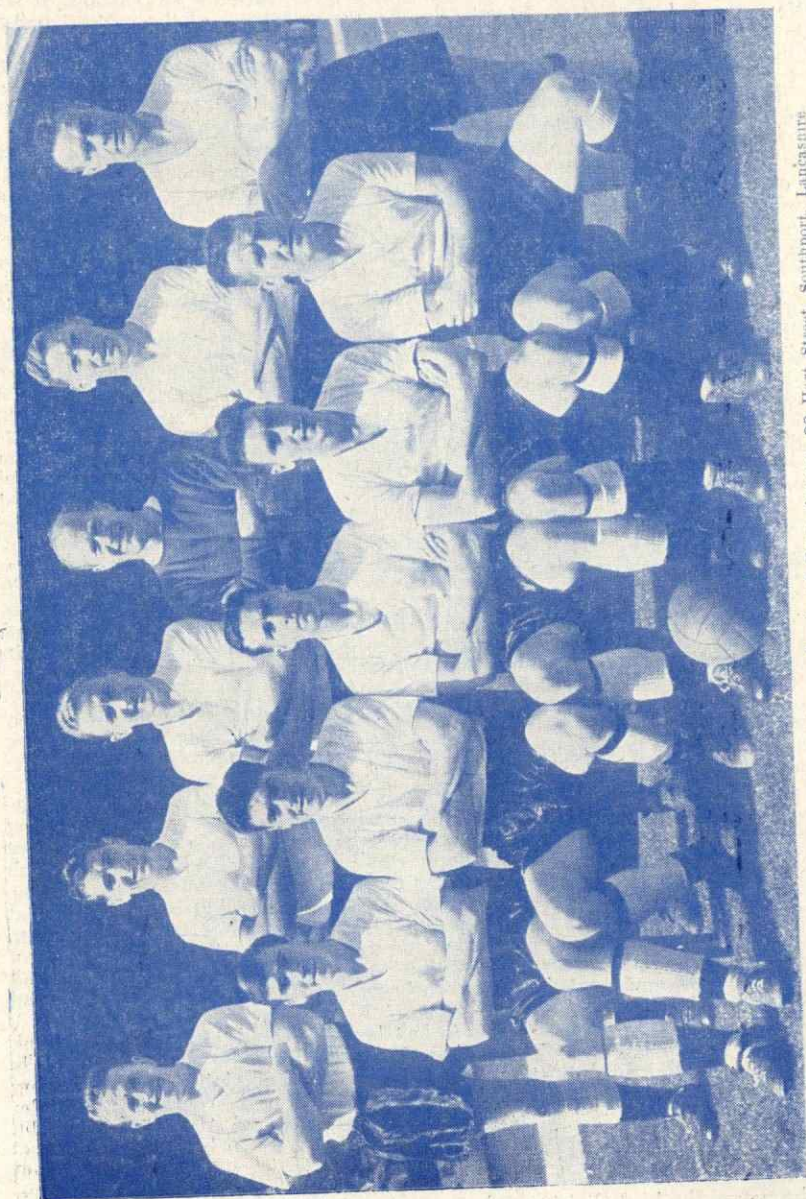
The highest payers got the players, but all that was changed in 1920 when the Football League took over the Southern League as the Southern Section, and Luton are among those who do not regret the change for otherwise they would not now be a First Division club. Luton's first season in the Southern League saw them finish as runners-up to Millwall Athletic, and that was precisely the placings the next season so it came as rather a shock when, at the end of the season (1895-6), they were dropped and Tottenham Hotspur went in. All right, that fate was to be suffered by others now famous and Royal Arsenal among them. Luton got back into the Southern League (in company with West Ham) in 1900, but at the end of season 1910-11 Luton were with Leyton (Charlie Buchan's first club) relegated to the Second Division of the Southern League, but they won promotion in 1913-14 taking the place of Coventry City. Luton never won the Southern League and in fact finished third bottom in 1920—its last season as a League in that constitution. The League although losing its best clubs (Luton among them) just carried on as it is doing today. In 17 seasons in the Southern Section Luton were out of the top half of the table on only three occasions—a high tribute to their consistency. In 1933-34 Town really began to give indications of future success for they finished sixth; improved to 4th the next season, and then were runners-up to Coventry City. The high promise was well fulfilled for at the end of 1936-37 Luton were the Champions — by two points from Notts County. Luton then had 11 seasons in the Second Division, their worst position being 19th in 1950-51, but that slump was the fore-runner to great achievement for after finishing 8th (one place below us), 3rd and 6th, they won promotion.

Yes, Luton finished as runners-up to Birmingham City losing the title on goal-average, but . . . keeping Rotherham out of second place by goal-average! So into the First Division to finish 10th last season. This season they have not been quite as good, but have been hard hit by injuries. It is interesting to recall our meetings with Town although they make happier reading for Luton. In nine League games we have scored only one victory (2—1 here in 1953-4). We have had four draws, but have lost twice to Town at Goodison Park (1—3 in 1951-2 and 0—1 last season). We lost 0—2 at Luton this season, but retain pleasant memories of our only Cup meeting. That was in the sixth round of 1933 when here at Goodison we slammed Luton 6—0 as we marched to Wembley and . . . the Cup. Maybe you remember the pitch being strewn with straw hats at the end — hats thrown there by Town supporters.

Luton have had many famous players, in fact few of the old-timers will ever think of them without recalling those able brothers Bob and Fred Hawkes. In the early 'twenties Luton had the rare distinction (for a Southern League club that is) of having three international players in their team. They were Ernie Simms the centre forward, who in 1922 played for England against Ireland, Louis Bookman and Alan Mathieson, the Irish international left wing of such outstanding skill. Today Town boasts several internationalists including two England goalkeepers! Luton claim with Portsmouth and Charlton Athletic the distinction of being the only Southern Section clubs to have won their way through to the First Division and . . . stayed there. Two links between Luton and ourselves is that our first team trainer and assistant coach Mr. Harry Wright joined us from Town, and that George Cummins our former inside left is now with Luton whose destinies today are controlled by Mr. "Dally" Duncan, the famous Scotland, Hull City and Derby County outside left.



## LUTON TOWN F.C.—1957



Provincial Press Agency, 88 Hart Street, Southport, Lancashire  
 Back Row (left to right): M. Cullen, J. Pemberton, S. Dunne, B. Streten, S. Owen, W. Shanks  
 Front Row (left to right): J. Adam, G. Turner, R. Morton, R. Pearce, T. Aherne

## HERE COME THE "HATTERS"

**BAYNHAM, Ron (Goalkeeper).** The England and Football League goalkeeper now in his sixth season with Luton whom he joined from Worcester City the Southern League club. Lost his place some weeks ago to . . .

**STRETEN, Bernard (Goalkeeper).** Another representative player and has in fact played for England both as an amateur and professional. A native of Gillingham, Streten played as an amateur with Notts County and Shrewsbury Town taking the paid "ticket" with Luton.

**DUNNE, Seamus (Right Back).** Luton like Everton, have a keenness for players from Eire. Seamus is one of them and, in fact, succeeded our own Peter Farrell as captain of the Eire international team—against Denmark. Born in Limerick, Dunne went to Luton from Shelbourne in May, 1950.

**JONES, Leslie (Right Back).** Although born in Wales, Leslie has been in Luton most of his life. Was as a matter of fact being measured for a Welsh cap when he was unlucky enough to be injured. A back on the Cresswell lines who looks moves ahead.

**McNALLY, Jack (Left Back).** It has not taken this Irishman long to establish himself at Kenilworth Road. He was signed from Shelbourne last May, and progressed so rapidly that he won his place in the Cup-ties against the Villa.

**AHERNE, Tom (Left Back).** Known as "Bud," Aherne is another Limerick lad and a great favourite. Went to Luton in March, 1949 from Belfast Celtic, and has played many times for Eire and the League of Ireland.

**PEMBERTON, Jim (Right Half).** Town's utility player for he has served them not only as a half-back, but at full-back, inside forward and even on the wing. Actually was signed as an inside forward from Stourbridge in 1949, and has proved a splendid servant.

**OWEN, Sid (Centre Half).** The backbone and skipper of the team, Sid was previously with Birmingham City, and has proved a most-consistent player. Toured Australia with the F.A. in 1952, the West Indies in 1955, and South Africa last summer, while he was in England's World Cup party in 1954.

**SHANKS, Wally (Left Half).** The lad who took a month's trial so seriously that it has lasted ten years! Wally, the son of Scottish parents was born in Valetta, Malta, and went to Luton on trial as a winger. Town knew a good 'un when they saw him, and Shanks has never left them.

**SMITH, Ray (Left Half).** Another grand clubman, for although Smith went to Luton from Evenwood Town in February, 1950, had made only four first team appearances up to this season during which he has established himself.

**CULLEN, Mike (Outside Right).** Played for Scotland last season against Austria at outside left, but prefers the right and we should know for he made the goal by which McEwan beat us here last season. Signed from Douglasdale Juniors in 1952.

**TURNER, Gordon (Inside Right).** One of football's greatest opportunists, Gordon has an uncanny "nose" for goals. This Doncaster lad was in the Royal Navy when he was recommended to Luton who signed him on demobilisation in 1950. In 1954-55 scored 37 goals to set up an individual club record. Has played for the Football League and is due for more honours.

**MORTON, Bob (Centre Forward or Wing Half).** A local lad of great versatility, Bob has been in representative football as a wing half-back and toured South Africa with the F.A. This local lad was switched to centre forward last season with such success that he has played there many times, this as well as fitting in at inside left.

**McLEOD, George (Centre Forward).** Another Scotsman whom Luton secured from Inverness Clacknacuddin on 8th January, 1955. Has been brought along in the junior teams and made his debut last season when making one appearance. Got back into the side this season.

**CUMMINS, George (Inside Left).** One of our own products, for we brought Cummins from Dublin and he helped to take us to the Cup semi-final in 1953. Transferred to Luton in August that year. Cummins is an Eire cap who has been handicapped recently by a knee injury.

**GREGORY, Tony (Outside Left or Centre Forward).** A local lad who was signed from Vauxhall Motors and turned professional in May, 1955. Is serving his apprenticeship in engineering. Has played as leader and winger this season.

**PEARCE, Reg (Inside Forward or Wing Half-Back).** Comes from the Merseyside area and has the distinction of having filled six different positions in Luton's League side. Joined them from Winsford United, the Cheshire League club in November, 1954.



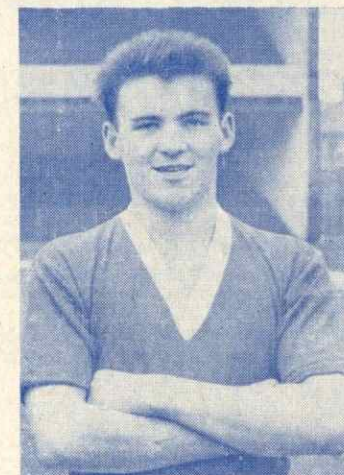
## TERENCE GANNON

The last younger player to be featured in our programme was right half Johnny King: today we have his opposite number in the other wing-half berth, Terence Gannon. The two lads—dissimilar in style; the one dark, the other fair, one slight, the other well built—have formed over the last season or two a partnership of wing-half play which has brought them through from the 'B' and 'A' teams to the Central League side.

Terry is yet another Liverpool-born lad, his eighteenth birthday falling next March. Although only 5 feet 7 inches tall, Terry is very solid indeed and his tackling and solidity in defence is outstanding. Whilst at School, he played for Liverpool and Lancashire Boys and was an England International Trialist, this in 1953-54 season and two years later, played in the Liverpool County F.A. Youth Team.

Terry signed as an amateur for our club in May, 1954, and after playing regularly for our other junior sides made his 'A' Team debut the following August. His progress has been even and well spaced, his Central League debut date being in September last year, this being against Wolves at Molineux. He has played in all four games for the second team this season, all at left half.

Signing professional forms in March last year, Terry is on a part-time basis at Goodison Park, and is serving with a Liverpool firm as an apprentice joiner.



## LEAGUE TABLES

(Up to and including Saturday, 12th January, 1957).

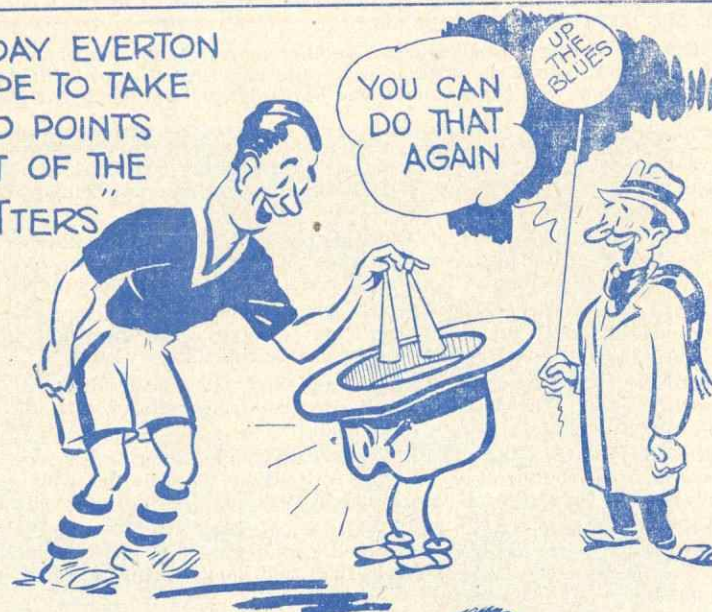
### LEAGUE—DIVISION I.

	P	W	D	L	F	A	Pts
Manchester U. ....	25	18	4	3	66	35	40
Tottenham H. ....	25	14	6	5	65	35	34
Arsenal .....	27	14	5	8	57	44	33
Blackpool .....	26	12	7	7	57	47	31
Bolton W. ....	26	12	7	7	43	38	31
Wolves .....	26	14	3	9	64	47	31
Preston N.E. ....	26	12	7	7	53	43	31
Leeds U. ....	26	11	8	7	51	39	30
Birmingham C. ....	26	12	5	9	48	38	29
Burnley .....	27	10	8	9	39	34	28
West Brom. A. ....	25	8	8	9	33	38	24
Newcastle U. ....	27	9	6	12	42	58	24
Aston V. ....	23	8	7	8	35	31	23
<b>Everton</b> .....	26	9	5	12	35	52	23
Sheffield W. ....	25	10	2	13	51	53	22
Chelsea .....	26	6	10	10	38	45	22
Luton T. ....	24	8	5	11	38	46	21
Manchester C. ....	26	8	5	13	45	54	21
Cardiff C. ....	25	7	5	13	35	55	19
Sunderland .....	26	6	4	16	43	59	16
Portsmouth .....	23	3	9	11	37	55	15
Charlton A. ....	26	6	2	18	38	67	14

### CENTRAL LEAGUE

	P	W	D	L	F	A	Pts
Sheffield W. ....	26	18	5	3	59	24	41
Liverpool .....	25	16	5	4	61	30	37
Manchester C. ....	26	14	5	7	63	44	33
Manchester U. ....	24	13	5	6	60	33	31
<b>Everton</b> .....	25	13	4	8	55	36	30
Huddersfield T. ....	25	12	6	7	57	45	30
Blackpool .....	27	13	3	11	55	43	29
Newcastle U. ....	26	12	5	9	61	52	29
Stoke C. ....	26	11	6	9	43	34	28
Sheffield U. ....	25	10	6	9	32	37	26
Bolton W. ....	26	10	5	11	48	50	25
Derby C. ....	25	11	3	11	50	53	25
Preston N.E. ....	26	11	2	13	41	59	24
Wolves .....	24	8	7	9	63	50	23
Aston V. ....	22	9	3	10	40	48	21
Blackburn R. ....	25	7	7	11	32	50	21
West Brom. A. ....	25	7	6	12	51	54	20
Burnley .....	26	7	5	14	38	57	19
Bury .....	26	7	4	15	32	49	18
Leeds U. ....	24	7	3	14	30	57	17
Chesterfield .....	24	4	5	15	33	65	13
Barnsley .....	24	2	8	14	28	61	12

TODAY EVERTON  
HOPE TO TAKE  
TWO POINTS  
OUT OF THE  
"HATTERS"



WE ARE ALWAYS  
PLEASED TO EXTEND A  
HEARTY WELCOME TO  
OUR GUESTS BUT WE  
HOPE LEADING MARKSMAN,  
INSIDE RIGHT

**GORDON  
TURNER,**

DOESN'T  
SHOW US  
ANY  
HAT TRICKS  
OR WE'LL  
BE GOING  
HOME AS  
MAD AS  
HATTERS.

WELL—I'LL  
EAT MY  
HAT!



Gandp

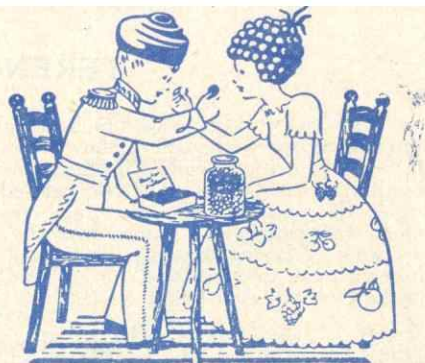


THANK GOODNESS

*Barker & Dobson*

RAGLAN CHOCOLATES  
(NEW)  
REGAL FRUIT DROPS

MAKERS OF FINER CHOCOLATES AND CONFECTIONERY SINCE 1834



**Cuppa?...**



**BEFORE OR AFTER THE MATCH!**

Enjoy a steaming-hot drink, and a tasty snack at one of the City Caterers' refreshment bars inside the ground. Good Food! Low Prices!

**LIVERPOOL CITY CATERERS**

MARYBONE - LIVERPOOL Phone: Central 1864



football fans  
read

**NEWS  
OF THE  
WORLD**

expert reports



**EVERTON**

Right

(Blue Jerseys)  
DUNLOP (1)

Left

SUTHERLAND (2)

TANSEY (3)

FARRELL (4)

DONOVAN (5)

REA (6)

McNAMARA(7) GAULD(8) HARRIS, J.(9) FIELDING(10) EGLINGTON(11)

Referee :

Mr. G. E. Oliver  
(Middlesbrough)



Linesmen :

Messrs. H. Tonge (Yellow Flag)  
and H. Callaghan (Red Flag).

SHANKS (11) CUMMINS (10) McLEOD (9) TURNER (8) PEARCE (7)

SMITH (6)

OWEN (5)

MORTON (4)

McNALLY (3)

DUNNE (2)

STRETEN (1)

Left

(White Jerseys)

Right

**LUTON TOWN**

HIGH TEA. LOW PRICES.

*Have a Hot Meal  
after the Match*

**LITTLEWOODS**

**CHURCH ST.  
LIVERPOOL**

Round the corner from  
Central Station

Bus No. 30

or

Bus Nos. 19 and 19A

or

Special buses in  
Gt. Charlotte St.  
pass the door

Tel. BOOTLE 2538/9

Tel. BOOTLE 1131

**LAWRENSON'S  
LUXURY COACHES**

PRIVATE  
PARTIES

SPECIAL EXCURSIONS BY ROAD  
FOR "AWAY" MATCHES

DAILY  
TOURS

**MERTON ROAD, BOOTLE**

OFFICIAL CONTRACTORS TO EVERTON FOOTBALL CLUB  
AGENTS for BRITISH and CONTINENTAL MOTOR TOURS

*Great Stout*  
**"RED LABEL"**  
**SWEET! STRONG! SUSTAINING!**  
**BENT'S for Better Value!**



BENT'S BREWERS LIVERPOOL & STONE



## YOUNGER MATTERS

### JUNIOR TEAM GAMES PLAYED SATURDAY, 29th DECEMBER, 1956.

#### Lancashire League—Division One.

PRESTON N.E. "A" .....0                      EVERTON "A" .....5

Evertton "A"—Harris, A. ; Parkes, Heyes ; Fitzsimmons, Billington, Smith ; Payne, Thomas, Temple, Vizard, Williams, J. D.

Goal Scorers :—Williams (2), Temple, Thomas, Vizard.

This was a well deserved victory for the "A" team who gave an impressive display, especially considering the heavy state of the ground.

Our boys took command from the start and never relaxed their efforts to force home their territorial advantage. They were rewarded with three first half goals and added two more after the interval.

It was one of the "A" team's best displays of the season.

#### West Cheshire League—Division One.

EVERTON "C" .....3                      STORK .....5

Evertton "C"—Caldwell ; B. Tamm, Capper ; Clayton, G. McNally, P. Hannaway ; K. Price, J. Dixon, Hood, Jones, B., Gregory.

Goal Scorers :—Hood (2), Price.

Although the "C" team lost this thrilling game, they have no reason to feel downhearted for they gave a most encouraging display.

Stork played extremely well and altogether, it was an excellent match. The pity was that one side had to lose. In fact the score was level at 3—3 with but ten minutes left for play. It was then that Stork took command for the first time and clinched the match with two further goals.

### JUNIOR TEAM GAMES PLAYED SATURDAY, 5th JANUARY, 1957.

#### Lancashire League—Division One.

MANCHESTER UNITED "A" .....4                      EVERTON "A" .....6

Evertton "A"—Harris, A. ; Parkes, Heyes ; King, Billington, Smith ; Payne, Thomas, Temple, Vizard, Williams, J. D.

Goal Scorers :—Vizard (2), Thomas, Temple, Smith, Payne.

The score suggests another exciting struggle and, in fact, this was one of the most thrilling and entertaining games seen in any class of football.

Our lads were well on top in the first half and half-time arrived with the score 3—1 in our favour. However, United made a great bid to get back into the game immediately on the resumption and so successful were they that not only did they draw level but they took the lead with a penalty goal. Our team gradually took command again and were completely in control during the last twenty minutes, scoring three times to finish worthy winners.

#### Lancashire League—Division Two.

EVERTON "B" .....4                      MANCHESTER UNITED "B" .....4

Evertton "B"—Moore, R. ; J. Connor, P. Finlay ; A. Peat, G. McNally, Keeley ; D. Todd, Davison, Hood, Jones, B., K. Barton.

Goal Scorers :—Hood (2), Davison, Todd.

This was little behind the "A" team game for thrills and excitement and if the coming F.A. Youth Challenge Cup-tie between our clubs reaches the standard of either of these games then it will be well worth seeing.

United scored in the first minute but we recovered from this reverse very quickly and made the score 3—1. Our opponents fought back well and before half-time, had reduced the margin to one goal.

In the second half both sides had their spells of supremacy but when we took the lead to make the score 4—3, it appeared that we would win. United obtained a late equaliser however, to take home a point.

### L.C.F.A. JUNIOR CUP—THIRD ROUND.

SALISBURY ATHLETIC .....4                      EVERTON "B" .....0

Evertton "C"—J. Johnson ; B. Tamm, E. Williams ; J. Blain, P. Hannaway, J. Dixon ; J. Fielding, J. A. Quayle, E. Moss, K. Spencer, A. Quayle.

Our Junior Cup-tie with Bootle J.O.C. League leaders, Salisbury Athletic, took place at Orrell Pleasure Ground and although conditions were far from ideal, our opponents certainly deserved to go forward into the 4th Round.

Our boys played some good mid-field football but there was a lack of punch in front of goal. In fact this was the difference between the two teams and Salisbury always looked more dangerous when on the attack.

We offer our congratulations to the Salisbury Club on their victory. On this form they should certainly reach the final of this competition.

#### Friendly Match.

STORK JUNIORS .....3                      EVERTON COLTS .....4

Evertton Colts—R. Hutson ; R. O'Hanlon, B. Hall ; G. O'Brien, J. Formby, E. Cavanagh ; T. Atkinson, E. Folksman, J. W. Jones, A. Ashworth, C. Wallbank.

Goal Scorers :—Folksman (2), Cavanagh, Ashworth.

The Colts just managed to retain their 100% record in this return game with the Stork boys. Strangely enough, our last encounter resulted in a victory for us by exactly the same score.

Ground conditions were extremely good but the game itself was spoilt by a very strong wind. However, both sides endeavoured to play good football and, under the conditions, it was a most entertaining match.

Our boys just about deserved their narrow win but the issue was in doubt right up to the final whistle.

## NEXT MATCH HERE

### F.A. CUP — 4th ROUND

SATURDAY NEXT, 26th JANUARY

**v. WEST HAM UNITED**

KICK-OFF 2-45 p.m.

Prices of Admission : Goal Stands 5/- ; Paddock 3/6 ; Ground 2/- (Boys 9d.)



# My goal!...

1d a week is

ALL I SEEK!

... is a penny per week from all Liverpool's working citizens. Liverpool's main welfare and charitable organisations have come together to raise funds by a common effort to carry on their work among sick people, youth, problem families, old folk, the physically handicapped and people in distress. If you do not already subscribe at your place of employment please ask your Welfare or Personnel Officer for details, or write to: 14 Castle Street, Liverpool.

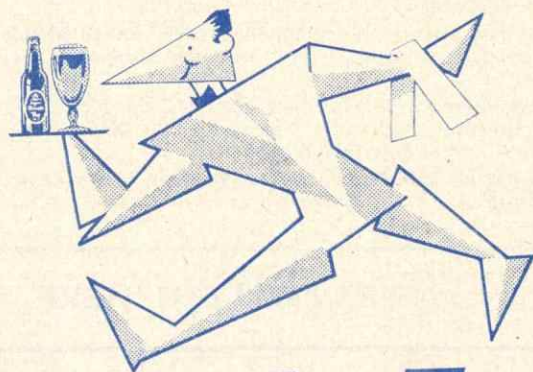


Support

**U.V.O**

**LIVERPOOL'S OWN GROUP OF WELFARE & CHARITY ORGANISATIONS**

DART IN for a —



## Double Top

Higson's Brown Ale

## LIGHT ON THE LIGHTS

(By DEREK WALLIS, Sports Columnist of the DAILY MIRROR).

Slowly but surely artificial football is creeping in. With the arrival of the midwinter murk, clubs are switching on floodlights so that they can extract the last penny from the customers by arranging later kick-offs.

**THIS IS PROGRESS.** There is no sudden switch from daylight to floodlight. The lights merely serve as a boost to the fading natural light. Yet I detect a danger in this modern trend. The Football Association and Football League have already given permission for F.A. Cup replays and midweek League matches to be played with evening kick-offs. It may not be long before the mass of opinion in the game swings to the view that floodlight football is more profitable and attempts are made to re-organise the game completely.

### OPTICAL ILLUSION.

I believe that floodlight football is an optical illusion. Many club officials share my view. The lights give the impression that the game is faster than it really is. It is as artificial as that bowl of wax fruit on your sideboard. I'm all for progress, but not the sort of progress which threatens to interfere with our sporting habits.

**ALREADY** there are signs that the Football League intends to start its own floodlight competition. My comment: There are grumbles already that we play too much football in England . . . and we do.

**ALREADY** certain club officials are talking of Saturday evening matches. My comment: I like my Saturday evenings free and I'm sure most fans will agree.

**ALREADY** there has been a suggestion that one League match should be removed from the Saturday programme each week, brought forward to Friday evening—and, televised. My comment: I wonder what sort of crowds they would get with the whole nation able to see it at the turn of a switch?

### USE IT SPARINGLY.

Soccer is a Saturday afternoon sport. It must remain so. There was nothing wrong with football before floodlights became all the rage. I foresee domestic squabbles if football becomes a Saturday evening game. What would your wife say if you toddled off to a match tonight? Saturday night is the night out with the missus. Football couldn't compete with the lash of the tongue of the "old woman" who thought she had been done out of her night out.

Floodlights should be used sparingly to keep the novelty alive, and I am delighted to hear that Everton whose lights will be the finest in Britain will not be content to put on "just another game." It is Everton's intention, I am assured, to stage only the occasional "three star" match.

Clubs can learn from the experiences of Wolverhampton Wanderers who have played only comparatively few floodlight matches at Molineux, and by limiting the games to outstanding attractions have made it pay. That applies to a lesser degree to Sheffield Wednesday, Arsenal and Tottenham Hotspur, and just as Everton will give you the odd "Big" game, so do Manchester United intend following that idea when they "switched on." The chief purpose should be to bring the Scottish and Continental teams to the grounds where, among the fans, they are only names in a newspaper.

The odd Cup-tie replay under lights is fair enough because the supporters who would not normally be able to leave work on a midweek afternoon can then see the match.

For me floodlight football never will be anything more than a profitable sideline for the clubs. It must NOT be allowed to re-shape the whole of our sporting lives.



Imported specially from  
Ireland to

**DRAW**  
Irishmen together when they're  
**AWAY**  
from  
**HOME**

THE 100%  
PURE VIRGINIA  
CIGARETTE



**AFTON**

worth asking for

FROM ALL TOBACCONISTS : 10 for 1/11d. 20 for 3/10d.  
P. J. CARROLL & CO. LTD., GREENLAND STREET, GT. GEORGE PLACE, LIVERPOOL, 3

## HALF-TIME SCORES

### LEAGUE—DIVISION 1.

A	....	BIRMINGHAM CITY v. CHELSEA	....	.....
B	....	BLACKPOOL v. SUNDERLAND	....	.....
C	....	CARDIFF CITY v. BOLTON WANDERERS	....	.....
D	....	LEEDS UN. v. WOLVERHAMPTON WAND.	....	.....
E	....	MANCHESTER C. v. CHARLTON ATH.	....	.....
F	....	NEWCASTLE UNITED v. ARSENAL	....	.....
G	....	PORTSMOUTH v. BURNLEY	....	.....
H	....	SHEFFIED WED. v. MANCHESTER UN.	....	.....
J	....	TOTTENHAM HOTSPUR v. ASTON VILLA	....	.....
K	....	WEST BROMWICH A. v. PRESTON N.E.	....	.....

### LEAGUE—DIVISION 2.

L	....	BLACKBURN ROVERS v. BARNSELY	....	.....
M	....	BRISTOL CITY v. SHEFFIELD UNITED	....	.....
N	....	BURY v. SWANSEA TOWN	....	.....
O	....	DONCASTER ROV. v. LEYTON ORIENT	....	.....
P	....	FULHAM v. LINCOLN CITY	....	.....
Q	....	GRIMSBY TOWN v. HUDDERSFIELD T.	....	.....
R	....	LEICESTER CITY v. BRISTOL ROVERS	....	.....
S	....	MIDDLESBROUGH v. NOTTS COUNTY	....	.....
T	....	NOTTS FOREST v. ROTHERHAM UN.	....	.....
U	....	STOKE CITY v. LIVERPOOL	....	.....
V	....	WEST HAM UNITED v. PORT VALE	....	.....

### LEAGUE—DIVISION 3 (NORTH).

W	....	BARROW v. WREXHAM	....	.....
X	....	CHESTER v. CARLISLE UNITED	....	.....
Y	....	SOUTHPORT v. TRANMERE ROVERS	....	.....

### CENTRAL LEAGUE

Z	....	DERBY COUNTY RES. v. EVERTON RES.	....	.....
---	------	-----------------------------------	------	-------

The records used in our Musical Programme have been supplied and can be obtained from ROBERT CREASE'S MUSIC STORES, 14 County Road, Walton (H.M.V. Record Agent (5 minutes from Goodison Park).

### RAILWAY TRANSPORT ARRANGEMENTS.

For Saturday, 26th January, for our game v. West Ham United, kick-off 2-45 p.m.

Trains leave Exchange Station  
for Kirkdale at :

1-22 p.m., 1-30 p.m.

1-36 p.m., 1-58 p.m., 2-32 p.m.

Trains leave Kirkdale Station  
for Exchange at :

4-15 p.m., 4-34 p.m., 4-49 p.m.

Extra trains additional to the above, will also be run according to the day's requirements. The fare from Exchange Station to Kirkdale is 9d. return. The times given above for return trains apply today.



# Holidays with Play!

The time will come, said the referee  
When, with matches over and done,  
You can pack up your bags and pocket your fees  
And head for the coast and the sun.

The hard work you've done will have earned you a rest.  
(This applies as well to the fan)  
For Holiday joys—be sure of the best  
Take a trip to the Isle of Man.

Nowhere can you compress such a variety of amusement,  
entertainment, sport, and scenic beauty within the term of  
one short holiday, as the Isle of Man. Write today for  
free guide enclosing 2d. stamp to S. R. Bond, Tourist  
Board, Isle of Man.

Do not forget the greatest sporting  
event of 1957, The Golden Jubilee of the  
T.T. Motor Cycle Races, June 3rd, 5th  
and 7th.



## ISLE OF MAN

for Sport and Happy Holidays

### Free book on **RUPTURE**

Here is great news for Rupture Sufferers. **MYO-PLASTEX**—an absolutely new invention — will control your rupture “as-with-the-fingertips” gently, naturally and with perfect safety. You can finish *here and now* with hard pads and spring trusses. You can put an end to all the discomfort and worry you have endured. Send your name and address *this minute* for our **FREE** descriptive booklet. It can bring you new life and hope!

**MYO-PLASTEX APPLIANCE CO.,**

Dept. S.G.  
44 Tottenham Court Road, London, W1.

