

LEAGUE CHAMPIONS 1954-55



Chelsea Football Club

Stamford Bridge Grounds, London SW6

FOOTBALL LEAGUE—DIVISION I

SEASON 1956-57

CHELSEA v LUTON TOWN

Saturday, 17th November, 1956 Kick-off 2.30 p.m.



Official Programme

6^d

The right of admission to grounds
is reserved.

1956	Opponents	Venue	F.A.
Aug. 18	Burnley	Away	0-2
" 22	Sheffield Wednesday	Away	0-4
" 25	PRESTON N.E.	HOME	1-0
Sept. 1	Leeds United	Away	0-0
" 5	MANCHESTER U.	HOME	1-2
" 8	Cardiff City	Away	1-1
" 15	BIRMINGHAM C.	HOME	1-0
" 19	SHEFFIELD WED.	HOME	0-0
" 22	West Bromwich A.	Away	1-2
" 29	PORTSMOUTH	HOME	3-3
Oct. 6	TOTTENHAM H.	HOME	2-4
" 13	Everton	Away	3-0
" 20	WOLVERHAMPTON	HOME	3-3
" 27	Bolton Wanderers	Away	2-2
Nov. 3	CHARLTON A.	HOME	1-3
" 10	Sunderland	Away	3-1
" 17	LUTON TOWN	HOME
" 24	Aston Villa	Away
Dec. 1	BLACKPOOL	HOME
" 8	Manchester City	Away
" 15	BURNLEY	HOME
" 22	Preston North End	Away
" 25	ARSENAL	HOME
" 26	Arsenal	Away
" 29	LEEDS UNITED	HOME

1957	Opponents	Venue	F.A.
Jan. 1	Manchester United	Away
" 5	(3) F.A. Cup
" 12	CARDIFF CITY	HOME
" 19	Birmingham City	Away
" 26	(4) F.A. Cup
Feb. 2	WEST BROM. A.	HOME
" 9	Portsmouth	Away
" 16	(5) Tottenham Hotspur	Away
" 23	BOLTON WAND.	HOME
Mar. 2	(6) Wolverhampton W.	Away
" 9	MANCHESTER C.	HOME
" 16	Charlton Athletic	Away
" 23	(SF) SUNDERLAND	HOME
" 30	Luton Town	Away
Apr. 6	ASTON VILLA	HOME
" 13	Blackpool	Away
" 19	Newcastle United	Away
" 20	EVERTON	HOME
" 22	NEWCASTLE UTD.	HOME
May 4	F.A. CUP FINAL

(3), (4), (5), (6), (SF)—indicate F.A. Cup dates

1956	Opponents	Venue	F.A.
Aug. 22	ARSENAL	HOME	1-1
" 25	Leicester City	Away	1-2
" 28	Arsenal	Away	3-7
Sept. 1	BRIGHTON & H.A.	HOME	7-1
" 8	CARDIFF CITY	HOME	2-1
" 15	Ipswich Town	Away	1-1
" 22	BRISTOL CITY	HOME	2-1
" 29	Portsmouth	Away	2-1
Oct. 1	(1) TOTTENHAM H.	HOME	1-2
	London Challenge Cup		
" 6	Luton Town	Away	0-1
" 13	SWANSEA TOWN	HOME	5-2
" 20	Plymouth Argyle	Away	2-1
" 27	QUEEN'S PARK R.	HOME	3-1
Nov. 3	Southend United	Away	4-0
" 10	WEST HAM UTD.	HOME	0-1
" 17	Northampton Town	Away
" 24	NORWICH CITY	HOME

The records which you hear today have been kindly provided by and can be obtained from Dawson Bros., 16, Fulham High Street, S.W.6.

Dec. 1	Charlton Athletic	Away
" 8	SOUTHAMPTON	HOME
" 15	Brentford	Away
" 22	LEICESTER CITY	HOME
" 25	Millwall	Away
" 26	MILLWALL	HOME
" 29	Brighton & Hove A.	Away

1957	Opponents	Venue	F.A.
Jan. 5	BIRMINGHAM C.	HOME
" 12	Cardiff City	Away
" 19	IPSWICH TOWN	HOME
" 26	Birmingham City	Away
Feb. 2	Bristol City	Away
" 9	PORTSMOUTH	HOME
" 16	LUTON TOWN	HOME
" 23	Swansea Town	Away
Mar. 2	PLYMOUTH A.	HOME
" 9	Queen's Park Rangers	Away
" 16	SOUTHEND UTD.	HOME
" 23	West Ham United	Away
" 30	NORTHAMPTON T.	HOME
Apr. 6	Norwich City	Away
" 13	CHARLTON A.	HOME
" 19	ALDRERSHOT	HOME
" 20	Southampton	Away
" 22	Aldershot	Away
" 27	BRENTFORD	HOME

Saturday, 24th November

(Kick-off 2.15 p.m.)

NORWICH CITY

Football Combination

Saturday, 1st December

(Kick-off 2.15 p.m.)

BLACKPOOL

Football League



League Champions 1955

FOUNDED 1905

CLUB COLOURS:
Shirts: Royal Blue (White Collars) Knickers: White
Stockings: Black, Blue and White Tops

Registered Address: STAMFORD BRIDGE GROUNDS, FULHAM ROAD,
LONDON, S.W.6. [FUL 5545]

PRESIDENT: The Right Hon. Earl Cadogan, M.C.

BOARD OF DIRECTORS:
J. H. Mears (CHAIRMAN) C. J. Pratt (VICE-CHAIRMAN),
L. J. Mears, L. R. Withey, J. G. Bennett.

MANAGER: E. J. Drake. SECRETARY: J. Battersby. TRAINER: J. Oxberry.

ONCE more to the delight of the grand people who travelled with us last Saturday, we came away with a good win. We won the game right from the start, in fact it was won by sheer football and in fairness to the lads, it might have been still more than the actual score. Look back at our "away" record and it is interesting to note that we have lost only one "away" game since the second game of the season; a grand record and one which gives credit to the fine spirit; every point in an away record is a good one. If only this were so with the "home" games—we should now be sitting pretty in the League. How easy it is for you and I to criticise! Once again I say—a word of encouragement goes a long way; who would not rather receive a pat on the back for the good things accomplished, rather than have all our errors pin-pointed?

On Saturday last I had occasion to give Bill Livingstone his first League opportunity in his rightful position—centre-half. (He had played there on one occasion only and that was in the Burnley Cup-tie when we beat them 1-0 last year.) It was pleasing to see him come through his tussles with Fleming, Sunderland and Scottish International, with flying colours. Owing to injuries I was compelled to play Peter Brabrook at outside-right and I shall do the same this week. A much sought-after goal has at last come to Tony Nicholas and I am sure that this is the tonic he has been wanting; we trust this is the forerunner of many to come. You can give credit to the team as a whole, they all played well and I congratulate them.

The Reserve side were not so fortunate being beaten by a strong West Ham United side 1-0. The Metropolitan League side had no game.

Our Juniors reached their 100th goal in Cups and League this season when they scored three minutes after the kick-off at Bexleyheath last Saturday and went on to add 11 more goals to the tally. In spite of the score the game was not so easy as it suggests; it was a case of everyone on his toes and brilliant shooting. "The Babes" won their "away" fixture with Cambell Boys' Club in the Hornchurch League comfortably by 7-1. Good show, lads.

Luton Town, our visitors today, were the victors in the Floodlight Cup game we played in September. Let us hope we shall avenge our defeat today.

VICTORY BY 3-1 AT ROKER PARK—



Tony Nicholas heads in a Brabrook centre for our first goal.

TONY NICHOLAS HAS A "HEADER" DAY



Nicholas heads again, but this time the ball goes wide.



Another Nicholas header, this time saved by Bollands.



Livingstone heads away after a Sunderland free-kick.

The Talk of Stamford Bridge

STAN WICKS is now back in light training and there is every hope that he will be back in the side shortly. Stan was injured in our match against Sheffield Wednesday on September 19th, and it was known immediately that the damage to his knee would take some time to get right. A fortnight ago he went down to Broadstairs with the team for special training, but as far as Stan himself was concerned, it was "special light" training.

Our Junior teams started last Saturday needing one goal to reach their 100th of the season. This duly came in the first few minutes of our South East Counties League match against Bexleyheath. Their tally to date so far this season is as follows: 55 goals in nine S.E.C. League games, 39 in six Hornchurch League games, 18 in two F.A. Youth Cup matches and six in the Southern Junior Floodlight Cup match.

British Railways are running an excursion train to Birmingham next Saturday (November 24th) for our away match against Aston Villa. The return fare, second class, is 16/- and will be issued at Paddington and available for the following trains:

Leave Paddington: 10.10, 11.10 a.m.
Arrive Birmingham (Snow Hill): 12.19 p.m., 1.22 p.m.
Leave Birmingham (Snow Hill): 6.0 p.m., 8.0 p.m.
Arrive Paddington: 8.42, 10.22 p.m.

Our Juniors won their second round F.A. Youth Cup match against Southend United a fortnight ago and we have been drawn against Peterborough United in the

third round of the competition. The match will be played at Stamford Bridge on Saturday morning, December 8th, kick-off 10.45 a.m. We hope that as many of our supporters as possible will come along and give our youngsters the encouragement they deserve for their achievements so far this season.

Congratulations to Mr. L. J. Mears on the birth of his third grandchild, Jane, on Friday, November 2nd.



David Cliss gained his first Youth cap for England when he played against Belgium Youth (both teams aged under 18) at Brussels on November 7th. Cliss was called into the side at the last moment owing to an injury to a selected player, but he quickly found his feet and opened the scoring for England. The match was abandoned after about an hour's play with England leading 3-2.

TODAY'S BAND

We are glad to welcome the Drum and Bugle Band of the Boys' Company of the Royal Army Service Corps, Aldershot, today. They will play a programme of music before the match and during half-time.

Boys are enlisted into the Boys' Company, R.A.S.C. between the ages of 15 and 16½ years and enter Man Service at the age of 17½. The aim of the Company is to produce long term Warrant Officers and senior non-commissioned officers. To this end, training is given to obtain educational as well as military qualifications and all boys are taught a trade, either driving or clerical. Other trades are available on entering Man Service. Boys' Company, R.A.S.C. offers an attractive and well paid life. Further information may be obtained from the nearest Recruiting Officer or by writing, or visiting, O.C. Boys' Company, R.A.S.C., Quebec Barracks, Bordon, Hants.

OUR VISITORS TODAY

ALTHOUGH they have not maintained the high standard set for them in recent matches, Luton Town, today's visitors to Stamford Bridge, are still a hard side to overcome, as more than one team has learned to its cost this winter.

Under the astute guidance of "Dally" Duncan, the Hatters play football of the highest class, and if they could add a little greater penetration to their work would do even better. They have many talented performers in their ranks, not the least of them being the considerable contingent of Irishmen. This band from the Emerald Isle has been reinforced since the end of last season by the signing of Brendan McNally, the former Shelbourne full-back.

Luton's away record so far shows one win, at Charlton, and draws at Newcastle and Burnley. Four defeats have been their portion on opponents' grounds, and in several of these the Hatters' rearguard has not been up to its usual form. For instance, Tottenham rattled up five against them at White Hart Lane towards the end of September, and Blackpool scored four at Bloomfield Road a fortnight earlier.

Injuries and loss of form have forced Mr. Duncan to make several alterations, the most notable absentee being leading scorer Gordon Turner. The talented inside-right is at present out of action with a damaged ankle and, unfortunately, is likely to be on the sidelines for some weeks.

Before his injury Turner had netted fourteen times in thirteen outings, a return which still sees him among the First Divisions' leading marksmen.

Contesting possession of the senior goalkeeping berth this season have been those two top-class performers, Bernard Stretten and Ron Baynham. The former, who is at present the first choice, has been capped by England as both an amateur and professional. A native of Gillingham, Stretten saw service with Notts County and Shrewsbury prior to joining the Hatters nine years ago. Baynham, also a representative of his country in internationals, comes from Birmingham, and went to Kenilworth Road from Worcester City.

Eire honours have come as a reward for the consistent service of Seamus Dunne in the six years he has been with Luton. Cool and stylish, Dunne was once on Shelbourne's books.

His regular partner is now Welshman

Leslie Jones, who has had spells of first team duty in both full-back positions. Now he is established on the left, having taken over from "Bud" Aherne in the last few weeks. Aherne, christened Thomas, is a native of Limerick, and spent some years in the service of Belfast Celtic before signing for the Hatters in 1949.

Among those great clubmen who give of their best week in and week out in any one of a number of positions is burly Jimmy Pemberton. Recruited from his native Stourbridge as an inside-forward, he has subsequently turned out at full-back, wing-half and at outside-left.

Birmingham's loss has been Luton's gain so far as centre-half Syd Owen is concerned. Born in the Midlands city, Owen failed to hit the highspots at wing-half with his local team, but a move to the pivotal position with Luton has been beneficial to both player and club. Despite having to contend with numerous injuries, Owen has been the kingpin of the Hatters' rearguard for most of the post-war period.

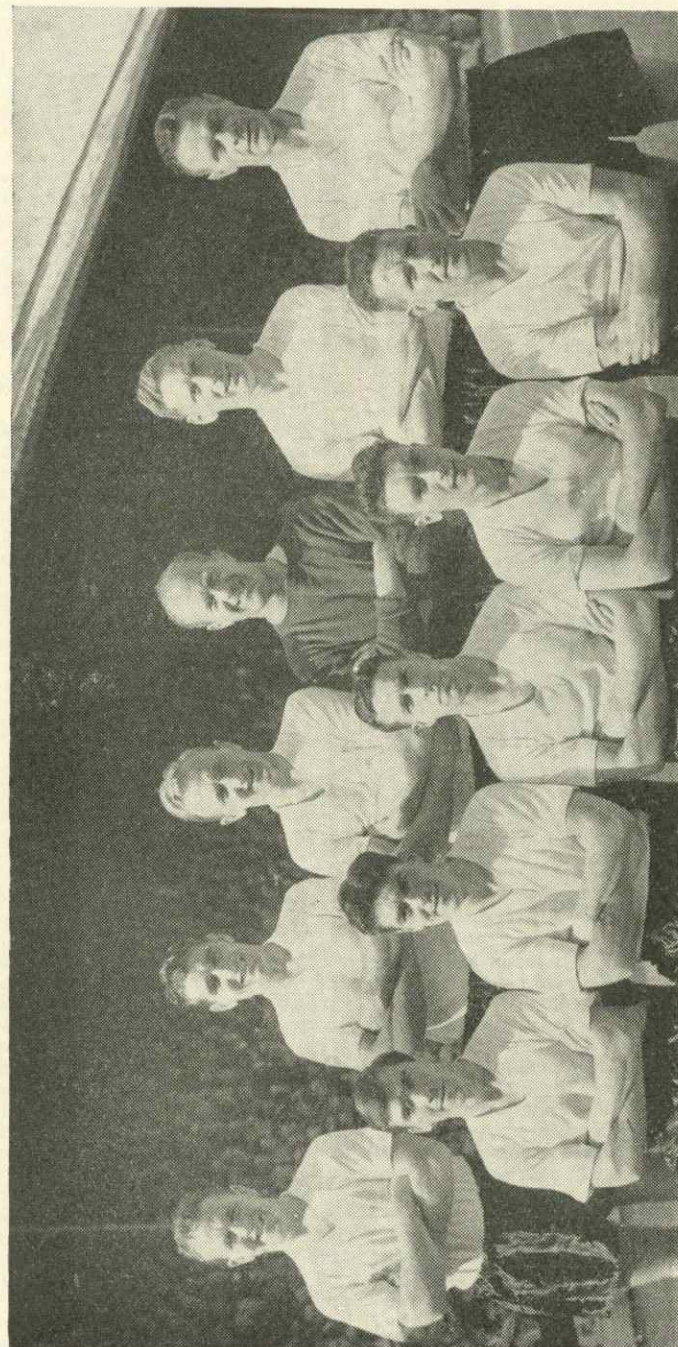
Another useful utility man is Wally Shanks, who is a Scot, although born at Valetta, Malta. Signed as a right winger, Shanks has played at inside-forward and more recently at left-half in the past few seasons.

Helping to make up the cosmopolitan nature of the Luton playing staff is Roy Davies, a South African. First came into prominence with Clyde and crossed the border bound for Luton four years ago. The opposite wing berth, and a position in the middle line have also been filled by the fair-haired native of Port Elizabeth.

Since Turner's injury, the inside-right berth has been filled by Reg Pearce and John Groves. Pearce comes from Liverpool and was playing in Cheshire League circles when spotted and signed by Luton in 1955. He has subsequently filled all five forward positions. Groves, the son of a former Derby clubmate of Dally Duncan, is yet another versatile performer, having played on the wing, at inside and half-back.

An England "B" international and reserve for the full national side, Bob Morton is perhaps best known as one of the game's outstanding half-backs. Now he is making just as big a name for himself as leader of the Luton attack. A local development, from Aston Clinton, Buckinghamshire. (continued on page 16)

LUTON TOWN 1956-57



Standing: M. Cullen, J. Pemberton, S. Dunne, B. Streten, S. Owen, W. Shanks.
Seated: J. Adam, G. Turner, R. Morton, R. Pearce, T. Aherne.

CHELSEA

Colours—Shirts: Royal Blue (White Collars). Knickers: White. Stockings: Black, Blue and White Tops.

1. (Goal)
Robertson

2. (Right-back)
MacFarlane

3. (Left-back)
Sillett (P.)

4. (Right-half)
Armstrong

5. (Centre-half)
Livingstone

6. (Left-half)
Saunders

7. (Outside-right)
Brabrook

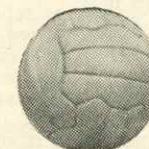
8. (Inside-right)
McNichol

9. (Centre-forward)
Tindall

10. (Inside-left)
Nicholas (A.)

11. (Outside-left)
Blunstone

Referee:
Mr. B. A. E. BUCKLE
(Peterborough)



Linesmen:
Mr. K. E. LAFLIN
(Stowmarket)
[Red Flag]

Mr. J. D. ROGERS
(Southwick, Sussex)
[Yellow Flag]

Davies
11. (Outside-left)

Cummins
10. (Inside-left)

Morton
9. (Centre-forward)

Groves
8. (Inside-right)

Cullen
7. (Outside-right)

Smith (R.)
6. (Left-half)

Owen
5. (Centre-half)

Pemberton
4. (Right-half)

Jones
3. (Left-back)

Dunne
2. (Right-back)

Streten
1. (Goal)

LUTON TOWN

Colours—Shirts: White. Knickers: Black. Stockings: Black, White Tops

THIS AND THAT By TRUE BLUE

THE LUTON TOWN STORY MORE LIKE FICTION THAN FACT

SCATTERED here and there about the country are football clubs with officials who, despite ambitions running sky-high, are nevertheless not very certain whether they could afford to rise to a higher class. These are the clubs with their homes in more or less remote places—standing on their own—where it is well-nigh impossible to attract people in sufficient numbers to maintain, for example, a First Division side.

Their problem might be stated in this fashion: "We should love to go into a higher class, even the highest class. We shall try to get there, but at the same time we are not at all sure that, even if we managed to do this, we should not find the class beyond our means."

Some of the foregoing thoughts are connected with the visit of the Luton Town team to Stamford Bridge. If one may put it that way, about the most remarkable thing concerning the visit is that this club should be here at all, in search of First Division points. But there it is.

From time to time the "heads" of Luton Town must have wondered, especially as they thought back over the club's experiences, whether they could hold their own in the top class. They must have sensed that they would be faced with problems somewhat different from those of the bigger organisations with their homes in thickly populated districts.

Much against the odds, Luton Town won promotion to the First Division—for the first time—at the end of the season before last. And the important point to be made is that, thus far, they have adorned the class which they managed to join.

Tell-Tale Postal Orders

It is a certainty that many of the old-time followers of the game—looking back—regard the presence of Luton Town in the First Division as something in the

nature of a miracle. Much of the story connected with the upward climb reads more like fiction than fact.

In one respect, however, it is a familiar story. The real turning point came when the club established a reputation as giant-killers in the Cup competition. So far as money counts, Chelsea played a part in building up the fortunes of the club. Away back in 1935, when today's opponents were in the Third South section of the League, they had Chelsea as their opponents in the third round of the Cup competition.

The first game ended all square. For the replay at Kenilworth Road the people turned up from far and near, resulting in a crush so great that a considerable number were squeezed into the comparatively small ground without having gone through the formality of paying their entrance money at the turnstiles.

Chelsea went out of the Cup on the Luton ground. In the board room of the club is a framed memento of that match. It is a postal order for one shilling, sent to the club after the game by a fellow who was among those carried in without paying.

That framed postal order hangs near another one—worth one shilling and tenpence—which was the club's portion of the gate receipts from a visit paid by Luton to the no-longer alive Thames club which, on the face of things, had a much better chance of making a show in big football. Not worth cashing those postal orders, but worth framing.

Caps, Not Straw Hats

Let me dwell for a few moments on other aspects of the Luton story. Because of industrial activity associated with the district, they were often referred to as the straw-hatters. So far as I am aware, the players have never gone through a serious match wearing straw hats, but it is written in the history books that there was a time when the Luton men turned

out to play in a Cup-tie wearing natty pink and blue caps.

It is claimed—I am not sure whether this is authentic—that Luton Town were the first club in the South of England to embrace professionalism. Anyway, it is a fact that the Luton "pros" of the club's earliest days got half a crown for home matches and three and sixpence for away games. And by way of encouraging the lads of the district to take to football, there was the promise of double pay for those locals who made the grade. That's an idea.

In more recent times the club has had players from many different parts of the British Isles—Irishmen especially—but I can't remember any occasion when the club has paid, at the particular time, anything like a record fee for any player.

Mention of Irishmen playing for Luton strikes a chord of memory. In October of 1931 two Luton Town forwards—Alan Mathieson and Louis Bookman—made up Ireland's left-wing in an international match against England. In that same game Ernest Simms of Luton was England's centre-forward.

Several years before a big football club at Stamford Bridge was no more than a pipe dream, Luton were in the Second Division. Perhaps it is not literally true to say that the people then running the club decided that they had taken an upward step which they couldn't afford. It is true, however, that on more than one occasion the long trips necessary to fulfil Second Division fixtures were undertaken on borrowed money. So the effort to continue in that class was given up, and the club went back to the old Southern League.

A "Record" Experiment

There are still targets at which the club can aim. One of these days—such wonders happen in this game of football—Luton Town may win the championship of the First Division. Or they may travel further in the Cup competition than in long-ago 1933, when their run did not end—with defeat at Everton—until the sixth round.

We can't stay to dilate on the reasons for the rise of Luton Town. Nor can anybody say what the future holds for the club—or for any other club for that matter. If of necessity, however, Manager "Dally" Duncan, whom we remember as a fine left-winger for Derby County in days which were much better than the

present for that club, he will probably be encouraged by the thought that experiments made from time to time have had wonderful results.

Outstanding Example

Chelsea fans scarcely need to be reminded of an outstanding example. On the very first occasion on which Joe Payne was chosen to play at centre-forward in a League match for the Luton first team he scored ten. There are other links between the two clubs.

At the present time there are two international goalkeepers on the playing staff; Chelsea were in a similar happy position at one time. And in the back-ground is a Youth International goalkeeper Alan Collier. That can be added to the club records.

Luton Town

Ground: Kenilworth Road.
Colours—Shirts: White. Knickers: Black.
Stockings: Black, White Tops.
Attendance Record: 28,433 v. Arsenal 1932.
Division II Runners-up: 1955.
Division III (South) Champions: 1937.

Chelsea v. Luton Town Past League Results

Season	Home	Away
1955-56	0-0	2-2
1956-57	Today	March 30

F.A. Cup

1926-27	Round 3 (Home)	4-0
1934-35	Round 3 (Home)	1-1
	Replay (Away)	0-2

SUMMARY

	P	W	D	L	F	A	Pts
League: Home	1	0	1	0	0	0	1
League: Away	1	0	1	0	2	2	1
F.A. Cup	3	1	1	1	5	3	—
Total	5	1	3	1	7	5	—

The Matches Last Season

Friday, 30th March, 1956.
Drew with LUTON TOWN (Away) 2-2
Half-time 0-1. Referee: Mr. F. B. Coultas (Hull). Attendance: 24,246.
Team: Robertson; Sillett (P.), Willemse; Dicks, Wicks, Casey; Parsons, McNichol, Bentley, Stubbs, Blunstone.
Scorers: Sillett (pen.), Dicks.
Monday, 2nd April, 1956.
Drew with LUTON TOWN (Home) 0-0
Referee: Mr. F. B. Coultas (Hull). Attendance: 26,364.
Team: Robertson; Harris, Sillett (P.); Nicholas (B.), Wicks, Casey; J. Lewis, Brabrook, Tindall, Bentley, Blunstone.

Tables, Appearances & Goalscorers

FOOTBALL LEAGUE—DIVISION I

	Home				Goals				Away				Goals				Apts
	P	W	D	L	F	A	W	D	L	F	A	W	D	L	F	A	
Tottenham H.	16	7	0	0	27	5	5	1	3	21	17	25					
Man. United	16	6	1	1	23	12	5	2	1	16	11	25					
Leeds United	17	6	2	1	20	7	3	2	3	11	16	22					
Blackpool	16	6	1	1	25	10	3	2	3	17	19	21					
Bolton	17	6	2	1	16	8	1	4	3	9	13	20					
Wolves	16	7	1	1	32	13	1	2	4	10	15	19					
Burnley	17	5	4	0	17	7	1	3	4	7	12	19					
West Brom. A.	16	5	2	1	16	8	2	3	3	8	12	19					
Birmingham	16	6	0	0	23	7	1	2	5	9	18	18					
Preston	17	5	2	0	23	11	2	2	4	9	16	18					
Arsenal	17	5	1	3	20	11	3	0	5	15	24	17					
LUTON	16	5	3	1	17	8	1	2	4	9	21	17					
Aston Villa	15	5	2	1	15	9	1	2	4	7	11	16					
CHELSEA	16	2	3	12	15	2	3	3	10	12	14						
Man. City	17	4	2	2	14	11	1	1	7	12	24	13					
Cardiff City	16	3	4	0	16	9	1	1	7	7	24	13					
Everton	17	3	2	3	13	15	2	1	6	12	22	13					
Sheffield Wed.	17	5	0	3	24	15	0	2	7	11	26	12					
Newcastle Utd.	16	2	3	2	9	11	2	1	6	9	24	12					
Portsmouth	16	3	1	3	18	14	0	4	5	12	25	11					
Sunderland	16	3	1	4	22	16	0	1	7	9	26	8					
Charlton	17	2	2	5	12	17	1	0	7	9	26	8					

FOOTBALL LEAGUE

Appearances

ARMSTRONG	16	STUBBS	6
BLUNSTONE	16	McNICHOL	6
ROBERTSON	16	DICKS	5
MACFARLANE	15	PARSONS	5
SAUNDERS	15	BENTLEY	4
BRABROOK	12	SILLETT (P.)	4
BELLETT	10	ALLEN	3
NICHOLAS (A.)	10	CASEY	3
TINDALL	10	LIVINGSTONE	2
J. LEWIS	8	WHITTAKER	2
WICKS	8		

Goalscorers: Lewis 5, Stubbs 4, Tindall 4, Blunstone 3, Armstrong 1, Brabrook 1, McNichol 1, Nicholas 1, Parsons 1, Saunders 1. Total 22.

METROPOLITAN LEAGUE

	P	W	D	L	F	A	Pts.
Luton Town	15	10	1	4	48	29	21
Bedford Town	12	9	2	1	49	21	20
Hastings United	11	8	2	1	55	22	18
CHELSEA	10	6	2	2	38	15	14
Eastbourne Utd.	10	7	0	3	31	14	14
Tonbridge	12	6	2	4	23	28	14
Newbury Town	9	5	3	1	25	14	13
Headington Utd.	13	6	1	6	26	31	13
Dartford	11	4	2	5	18	17	10
West Ham Utd.	10	4	2	4	21	23	10
Windsor & Eton	12	5	0	7	24	31	10
Guildford City	13	3	4	6	24	33	10
Dunstable Town	8	4	0	4	22	23	8
Crawley	10	4	0	6	18	25	8
Horsham	8	1	3	4	12	30	5
Haywards Heath	8	2	0	6	11	25	4
Wokingham Town	10	0	2	8	14	38	2
Brighton & H.A.	12	0	0	12	7	47	0

FOOTBALL COMBINATION

	P	W	D	L	F	A	Pts.
Bournemouth & Bos'cbe	17	11	5	1	52	26	27
West Ham United	16	11	4	1	30	13	26
Tottenham Hotspur	15	11	2	2	66	24	24
Arsenal	18	9	5	4	48	29	23
Leicester City	15	9	3	3	39	21	21
Bristol Rovers	15	8	3	4	40	19	19
Leyton Orient	15	9	1	5	40	25	19
Southampton	18	6	7	5	42	44	19
Crystal Palace	14	7	4	3	26	16	18
CHELSEA	14	8	2	4	33	21	18
Luton Town	14	8	1	5	33	19	17
Swindon Town	15	6	3	6	24	28	15
Bristol City	15	4	7	4	22	26	15
Aldershot	15	6	3	6	31	43	15
Birmingham City	15	5	4	6	26	24	14
Charlton Athletic	14	7	0	7	31	37	14
Millwall	15	5	4	6	23	29	14
Portsmouth	16	5	3	8	31	36	13
Northampton Town	14	5	3	6	27	38	13
Brighton & Hove Albion	14	5	3	6	25	39	13
Plymouth Argyle	16	5	3	8	28	44	13
Ipswich Town	15	4	4	7	31	38	12
Queen's Park Rangers	15	5	2	8	29	38	12
Reading	14	5	2	7	26	37	12
Southend United	15	5	2	8	25	37	12
Brentford	14	4	3	7	18	24	11
Cardiff City	15	5	1	9	29	36	11
Norwich City	15	4	2	9	17	23	10
Watford	16	3	4	9	18	30	10
Coventry City	15	3	3	9	28	41	9
Fulham	15	2	5	8	17	30	9
Swansea Town	15	1	4	10	19	39	6

FOOTBALL COMBINATION

Appearances

THOMSON	13	STUBBS	6
WHITTAKER	13	BERRY	4
ALLEN	10	KITCHENER	4
LIVINGSTONE	10	HUXFORD	3
CASEY	9	BELLETT	2
GIBBS	9	D. CLISS	2
McNICHOL	9	COURT	2
COMPTON	8	J. GREAVES	2
NICHOLAS (B.)	8	ROONEY	2
M. BLOCK	7	BRABROOK	1
BAKER	6	MEDLOCK	1
DICKS	6	SILLETT (P.)	1
PARSONS	6	SLUMAN	1
SILLETT (J.)	6	TINDALL	1

Goalscorers: Stubbs 6, Gibbs 5, Allen 4, Baker 4, Casey 4, Block 2, Greaves 2, McNichol 2, Kitchener 1, Parsons 1, Defender 2. Total 33.

METROPOLITAN LEAGUE

Appearances

FERGEY	10	MEDLOCK	4
CUNNINGHAM	8	SILLETT (J.)	4
COURT	7	VIRGO	4
LAVERICK	7	BAKER	3
SLUMAN	7	ROONEY	3
BERRY	6	T. STACEY	3
COLLINS	6	BLACKLEY	2
DONALDSON	5	DICKS	2
NIBET	5	NICHOLAS (B.)	2
P. SMITH	5	M. BLOCK	1
COMPTON	4	BRABROOK	1
HUXFORD	4	TINDALL	1
GIBBS	4		

Goalscorers: Sluman 7, Gibbs 5, Court 4, Nisbet 4, Laverick 2, Tindall 2, Baker 1, Bentley 1, Block 1, Brabrook 1, Dicks 1, Harrison 1, Huxford 1, Nicholas (B.) 1, Rooney 1, P. Smith 1, Stacey 1, Virgo 1, Defender 2. Total 38.

SOUTH-EAST COUNTIES LEAGUE

Appearances

ABREY	9	W. WALL	6
I. AGATE	9	BLACKLEY	5
B. LEGG	9	M. BLOCK	2
K. SHELLITO	9	C. SHONE	2
J. GREAVES	8	T. BRADBURY	1
M. SCOTT	8	J. CLARKSON	1
B. BRIDGES	7	R. HILLARY	1
M. DELLAR	7	D. LONG	1
M. HARRISON	7	SLUMAN	1
D. CLISS	6		

Goalscorers: Greaves 24, Bridges 12, Harrison 5, Wall 4, Blackley 4, Cliss 3, Block 1, Clarkson 1, Sluman 1. Total 55.

HORNCHURCH AND DISTRICT LEAGUE

Appearances

T. BRADBURY	6	K. SMITH	2
P. CONROY	6	L. VAESSEN	3
J. CLARKSON	5	W. WALL	3
T. RHODES	5	A. BLACKLEY	2
C. SHONE	5	W. CHURCHILL	1
R. HILLARY	4	J. GREAVES	1
D. LONG	4	B. LEGG	1
F. McLENNAN	4	D. REED	1
D. WINN	4	K. SHELLITO	1
M. HARRISON	3	M. THOMPSON	1
R. MOSELEY	3		

Goalscorers: Clarkson 16, Shone 11, McLennan 3, Wall 3, Harrison 2, Blackley 1, Greaves 1, Thompson 1, Defender 1. Total 39.

Match Summaries

FOOTBALL LEAGUE

Saturday, 3rd November.

Lost to CHARLTON ATHLETIC (Home) 1-3. Half-time: 1-1.

Referee: Mr. C. W. Kingston (Newport, Mon.). Attendance: 28,722.

Team: Robertson; MacFarlane, Sillett (P.); Armstrong, Dicks, Saunders; J. Lewis, Brabrook, Tindall, Nicholas (A.), Blunstone.

Scorer: Lewis.

Lewis scored for Chelsea after only five minutes but Kiernan equalised from a scramble resulting from a corner with the game 15 minutes old. Chelsea attacked for most of the game but could not crown their attacks with another goal. Charlton, however, scored through Kiernan (75 mins.) and Leary (86 mins.) late in the game and thus gained their first away points of the season.

Saturday, 10th November.

Beat SUNDERLAND (Away) 3-1. Half-time: 1-0.

Referee: Mr. L. J. Titebuck (Halifax, Yorks.). Attendance: 27,182.

Team: Robertson; MacFarlane, Sillett (P.); Armstrong, Livingstone, Saunders; Brabrook, McNichol, Tindall, Nicholas (A.), Blunstone.

Scorers: Nicholas, Tindall 2.

Nicholas scored his first League goal for Chelsea in the first half, after a move down the right wing. Tindall scored Chelsea's second in the 61st minute, but Sunderland fought hard and Shackleton made it 2-1 with 16 minutes to go. In the 86th minute Tindall scored again and that was the final score. Don Revie had signed for Sunderland (ex Manchester City) earlier in the day but did not play for his new team.

FOOTBALL COMBINATION

Saturday, 3rd November.

Beat SOUTHEND UNITED (Away) 4-0. Half-time: 3-0.

Team: Thomson; Sillett (J.), Whittaker; Nicholas (B.), Livingstone, Casey; Court, McNichol, Allen, Gibbs, Laverick.

Scorers: Casey, Gibbs 2, Defender (o.g.).

Saturday, 10th November.

Lost to WEST HAM UNITED (Home) 0-1. Half-time: 0-1.

Team: Thomson; Sillett (J.), Whittaker; Nicholas (B.), Dicks, Casey; Court, D. Cliss, Allen, Gibbs, Laverick.

METROPOLITAN LEAGUE

Saturday, 3rd November.

Beat TONBRIDGE (Home) 3-1. Half-time: 2-1.

Team: Collins; Berry, Fergey; Huxford, Cunningham, Compton; Lowe, Blackley, P. Smith, Nisbet, M. Harrison.

Scorers: Blackley, Nisbet, Harrison.

F.A. YOUTH CUP

Second Round

Saturday, 3rd November.

Beat SOUTHEND UNITED (Away) 8-0. Half-time: 3-0.

Team: I. Agate; K. Shellito, B. Legg; Abrey, M. Scott, B. Dellar; Sluman, D. Cliss, B. Bridges; J. Greaves, M. Block.

Scorers: Cliss 3, Greaves 3, Sluman, Block.

HORNCHURCH AND DISTRICT LEAGUE

Saturday, 3rd November.

Beat GLENDALE (Away) 4-0. Half-time: 2-0.

Team: T. Rhodes; R. Hillary, D. Long; T. Bradbury, P. Conroy, K. Smith; F. McLennan, W. Wall, J. Clarkson, J. Greaves, L. Vaessen.

Scorers: Clarkson 2, Greaves, Wall.

Saturday, 10th November.

Beat CAMBELL B.C. (Away) 7-1. Half-time: 3-1.

Team: R. Hillary; P. Conroy, D. Long; K. Smith, T. Bradbury, L. Vaessen; W. Wall, C. Shone, J. Clarkson, M. Thompson, W. Churchill.

Scorers: Clarkson 3, Wall 2, Shone, Thompson.

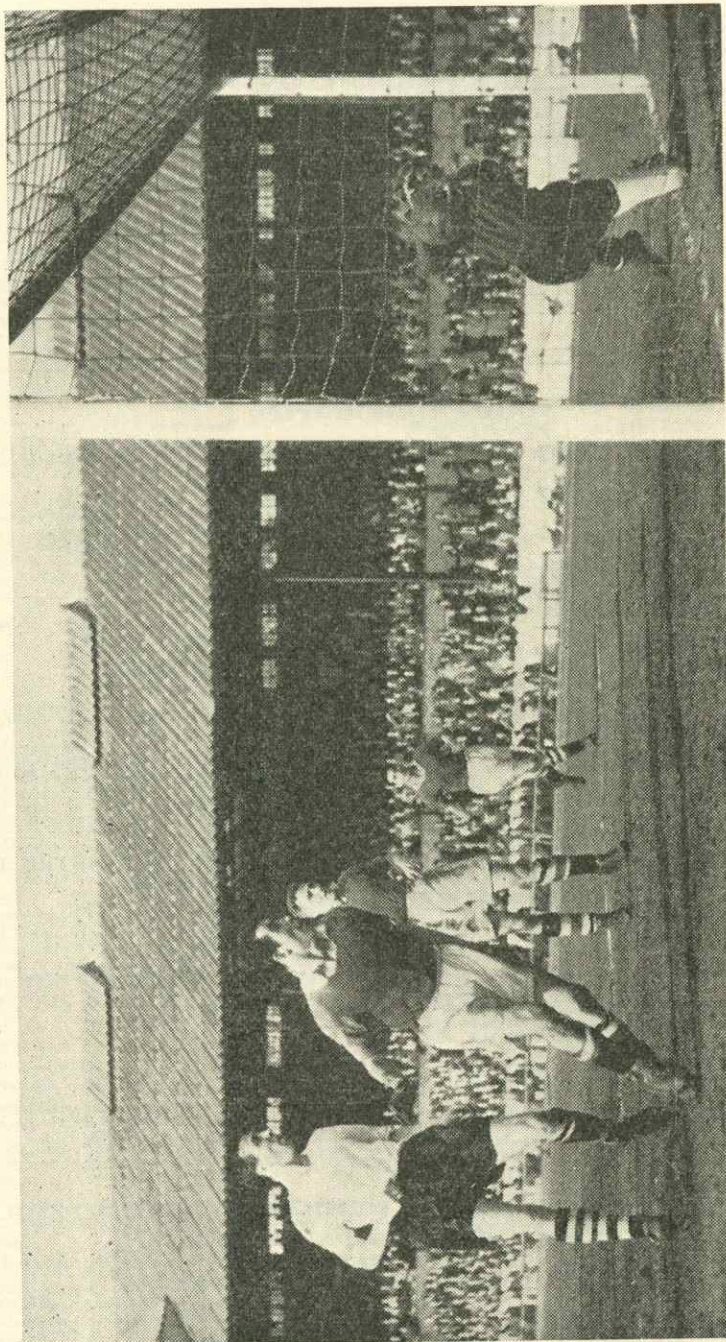
SOUTH-EAST COUNTIES LEAGUE

Saturday, 10th November.

Beat BEXLEYHEATH (Away) 12-0. Half-time: 4-0.

Team: I. Agate; K. Shellito, B. Legg; Abrey, M. Scott, B. Dellar; Sluman, J. Greaves, Blackley, M. Block, M. Harrison.

Scorers: Greaves 7, Blackley 2, Sluman, Harrison, Block.



Do you remember this incident in our League match against Luton Town at Stamford Bridge on Easter Monday? Jim Lewis has shot for goal, but Baynham stops it at the last possible moment. The game ended in a goal-less draw.

FIXTURES 1956-57

Metropolitan League

1956	Opponents	Venue	F.A.
Aug. 18	BEDFORD T. ...	HOME	4-4
" 25	Tonbridge ...	Away	1-2
Sept. 1	HORSHAM ...	HOME	7-0
" 8	Eastbourne United ...	Away	2-0
" 15	WEST HAM UTD. HOME		3-1
	(League Cup, 1st Round)		
" 22	GUILDFORD CITY ...	HOME	9-1
" 29	BRIGHTON & H.A. HOME		5-1
Oct. 13	HASTINGS UTD. ...	HOME	3-3
" 20	Brighton & Hove A. ...	Away	3-0
" 27	Headington United ...	Away	1-3
Nov. 3	TONBRIDGE ...	HOME	3-1
Nov. 17	DARTFORD ...	Woolwich
	(League Cup, 2nd Round)		
" 24	Bedford Town ...	Away
Dec. 1	Guildford City ...	Away
" 8	WEST HAM UTD. ...	HOME
" 15	EASTBOURNE U. ...	HOME
" 22	HEADINGTON U. ...	HOME
1957			
Jan. 5	CRAWLEY TOWN ...	HOME
" 12	Hastings United ...	Away
" 19	LUTON TOWN ...	HOME
" 26	Haywards Heath ...	Away
Feb. 2	Wokingham Town ...	Away
" 16	Dunstable Town ...	Away
" 23	WINDSOR & ETON HOME	
Mar. 9	DARTFORD ...	HOME
" 23	Crawley Town ...	Away
" 30	WOKINGHAM T. ...	HOME
Apr. 6	Horsham ...	Away
" 13	LUTON TOWN ...	HOME
" 20	Windsor & Eton ...	Away
" 27	NEWBURY TOWN ...	HOME
Undated:	West Ham United ...	Away
"	Dartford ...	Away
"	Dunstable Town ...	Away
"	Newbury Town ...	Away
"	HAYWARD'S HEATH HOME	
"	Dunstable Town ...	Away
	(Prof. Cup, 2nd Round)		

(Home matches will be played at Hendon or Woolwich Stadium)

F.A. Youth Cup

1956	Opponents	Venue	F.A.
Sept. 11	(1) FULHAM ...	HOME	10-1
Nov. 3	(2) Southend U. ...	Away	8-0
Dec. 8	(3) PETERBOROUGH	HOME

London Minor Cup

1956	Opponents	Venue	F.A.
Dec. 1	(1) ETON MANOR ...	HOME

London Mid-week League

1956	Opponents	Venue	F.A.
Sept. 26	TOTTENHAM H. ...	HOME	2-2
Oct. 10	ARSENAL ...	HOME	2-0
Nov. 14	WEST HAM U. ...	HOME
" 28	Charlton Athletic ...	Away
Dec. 12	CRYSTAL PALACE ...	HOME
1957			
Jan. 17	Tottenham Hotspur ...	Away
Feb. 20	Crystal Palace ...	Away
" 27	Portsmouth ...	Away
Mar. 6	CHARLTON ATH. ...	HOME
" 18	West Ham United ...	Away
" 27	PORTSMOUTH ...	HOME
Apr. 10	Arsenal ...	Away

South-East Counties League

1956	Opponents	Venue	F.A.
Aug. 25	WEST HAM U. ...	Hendon	2-0
Sept. 1	TOTTENHAM H. ...	Hendon	11-1
" 8	WATFORD ...	Hendon	8-0
" 15	Portsmouth ...	Away	3-0
Oct. 6	BEXLEYHEATH ...	Hendon	4-1
" 13	Millwall ...	Away	5-0
" 20	Queen's Park R. ...	Away	9-0
" 27	West Ham United ...	Away	1-0
Nov. 10	Bexleyheath ...	Away	12-0
" 17	PORTSMOUTH ...	Hendon
" 24	Watford ...	Away

Hornchurch & District League

1956	Opponents	Venue	F.A.
Sept. 8	GIDEA PARK ...	Woolwich	13-0
" 15	Chadwell Rovers ...	Away	7-0
Sept. 29	ARDLEIGH ...	Woolwich	4-1
Oct. 13	Clockhouse Y.C. ...	Away	4-2
Nov. 3	Glendale ...	Away	4-0
" 10	Cambell B.C. ...	Away	7-1
" 17	CAMBELL B.C. ...	Woolwich
" 24	CHADWELL R. ...	Woolwich

Floodlight Friendlies

1956	Opponents	Venue	F.A.
Oct. 8	Reading ...	Away	2-2

Southern Floodlight Cup Competition

1956	Opponents	Venue	F.A.
Sept. 26	(1) Luton Town ...	Away	2-4

Southern Junior Floodlight Cup Competition

1956	Opponents	Venue	F.A.
Oct. 15	(1) Queen's Park R. ...	Away	6-1
Nov. 21	(2) Luton Town ...	Away

HALF-TIME SCOREBOARD

FIRST DIVISION

A Arsenal v. Bolton W.	F Newcastle U. v. Everton
B Birmingham v. Charlton	G Portsmouth v. Blackpool
C Burnley v. Wolverhampton	H Preston v. Aston Villa
D Cardiff C. v. Sunderland	J Sheff. Wed. v. Tottenham
E Manchester U. v. Leeds	K West Brom. v. Man. City

SECOND DIVISION

L Bristol Rovers v. Fulham	N Leyton O. v. Rotherham
M Leicester v. Notts Forest	O Middlesbro' v. West Ham
P Stoke C. v. Blackburn R.	

F.A. CUP (FIRST ROUND)

R Brighton v. Millwall	U Newport (IoW.) v. Watford
S Brentford v. Guildford C.	V Q.P.R. v. Dorchester
T Crystal P. v. Walthamstow	W S'thampton v. N'thampton

Our Visitors Today (contd. from page 7)

A cartilage operation has contrived to retard the progress of George Cummins in recent months, but now he is fit again and back on senior duty. One of the few acquisitions made by Luton in the past few years, Dublin-born Cummins set the Hatters back five figures when signed from Everton in 1953. An Eire international, Cummins is the starting point of many of the attacks made by his front line colleagues.

Although capped by Scotland on the left-wing, Mike Cullen prefers the right flank and recently asked for a move from Luton, who want him to wear the Number 11 shirt more or less permanently. On either wing he is a fine

performer, and nobody will be more sorry than his team boss if he eventually leaves Kenilworth Road, for it was Mr. Duncan who recruited him from Douglasdale Juniors, north of the border, three years ago.

Jimmy Adam is also a Scot, from Blantyre, though it was while with Spennymoor United, the north-eastern non-League clue, that he first came to Lutons' notice in 1953.

These regular and experienced first team men, and others behind the scenes, like McNally and seventeen-years-old winger Roland Legate, should ensure that the Hatters maintain without undue difficulty the First Division status won last season.

SEASON TICKET HOLDERS AND F.A. CUP TIES

We wish to remind Season Ticket Holders that in accordance with the Regulations printed in their Books, it will not be necessary for them to make application for tickets for home Cup Ties. Tickets will be sent to them automatically on a basis of one ticket for each Book registered in their name.

In order to ensure that the system works smoothly, we ask all Season Ticket Holders to notify us IMMEDIATELY if they have changed their address since taking out their Season Tickets.

SEAT RESERVATIONS

Prices of reserved seats at home League matches are 6/-, 8/-, 10/- and 12/-. Applications (by post only) are accepted not more than four weeks in advance, and should be accompanied by remittance and stamped addressed envelope. It will be appreciated if separate application is made for each match.