

IPSWICH TOWN FOOTBALL CLUB

MEMBERS OF THE FOOTBALL
ASSOCIATION
SUFFOLK COUNTY FOOTBALL
ASSOCIATION
FOOTBALL LEAGUE DIV. II
FOOTBALL COMBINATION
ESSEX & SUFFOLK BORDER LEAGUE

LEAGUE
(DIVISION II)



OFFICIAL
PROGRAMME
3d.

Saturday, August 28th, 1954

v.

LUTON TOWN

Kick-off 3.0 p.m.

Nº 76

YOUR SATURDAY EVENING FOOTBALL FIXTURE

CHECK
YOUR
COUPON

— THE —
GREEN UN

FOLLOW
LOCAL
FOOTBALL

Price 2d. from your Newsagent.

MEMBERSHIP OF THIS ENSURES GRANTS

For your

Autumn and Winter

Clothing and Hosiery

Try

J. & J. Edwards

LIMITED

33—35 TAVERN STREET, IPSWICH

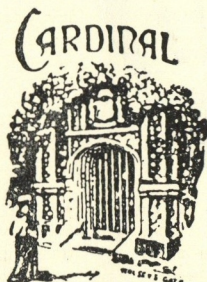
GET YOUR SUPPORTERS'

SCARFE — TIE — ROSETTE, ETC.

NOW!

COBBOLD

BEERS
WINES
and
SPIRITS



REGISTERED TRADE MARK

"Famous
for two
Centuries"

**CLIFF BREWERY
IPSWICH**

THAT ARE WORTH WHILE

(See
centre page)

IPSWICH TOWN FOOTBALL CLUB COMPANY, LTD.

DIRECTORS.

ALISTAIR P. COBBOLD (*Chairman*).
SIR CHARLES H. N. BUNBURY, BART.
CYRIL CATCHPOLE.
JOHN C. COBBOLD.

RT. HON. LORD CRANWORTH, K.G., M.C.
CECIL J. ROBINSON.
NATHAN SHAW.
ERNEST J. H. STEEL.
MAJOR A. D. R. TERRY.

Secretary-Manager: A. SCOTT DUNCAN. TELEPHONE 51306.

CLUB NOTES.

IT is with a fair amount of confidence that one can say already that Ipswich Town will not be out of their depth in the Second Division. Maybe it is early days to prophesy but although Ipswich went down at Rotherham they gave an exceedingly good account of themselves and at Middlesbrough did even better when they brought off one of the greatest victories in the history of the club by winning 1-0.

Both these games were very severe tests with which to begin a Second Division programme, and many were prepared to come to today's match against Luton with Ipswich still pointless! Least of all did they expect Ipswich to win at Ayresome Park for Middlesbrough were in the First Division last season.

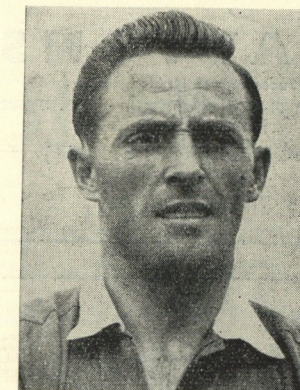
Again, however, the fighting spirit which carried Ipswich through those anxious months at the beginning of this year stood them in good stead. They kept an attacking Middlesbrough at bay in the first half and then took advantage of Garneys' sudden goal to turn the tables and outplay their opponents.

In both matches Ipswich played some beautiful football and in each case the home crowds were most appreciative.

A number of people have bemoaned Ipswich's bad luck at Rotherham but already things have evened themselves out for at Ayresome Park, Middlesbrough twice hit the woodwork when goals might have been scored.

Garneys, who had such a fine season last year, again has struck his best form for already he has two goals to his name. He scored with a brilliant header at Rotherham and again on Wednesday he found the net with consummate ease from a narrow angle.

Certainly Ipswich will have to live up to the higher standard of football in the Second Division and it is therefore encouraging to record that the Reserves are a vastly improved side from last year. They have been at home twice—against Leicester, with whom they



GARNEYS.

drew 1-1 and Northampton, who were beaten without any difficulty by 4-0; and each time it was the football they played which delighted crowds of over six and four thousand respectively.

The grass here at Portman Road appears to be a little thicker and longer than last year but just enough to encourage firm ground passing. There was no doubt that some of the play was well up to League standard and at present one would not fight shy of laying a bet on Ipswich Reserves winning their section of the league.

It was a big disappointment that Malcolm, one of the new signings, could not play this week but this gave

continued on page 7.

FORTHCOMING ATTRACTIONS.

Wed. Sept. 1st v. MIDDLESBROUGH (League)	K.O. 6.30 p.m.
Sat., Sept. 4th v. COVENTRY (Combination)	K.O. 3 p.m.
Wed., Sept. 8th v. WATFORD (Combination)	K.O. 6.15 p.m.

Football Boots...

WE SUPPLY THE TOWN
WHY NOT YOU?

Manfield Villan 65/- per pair

Manfield Hotspur 49/9 per pair

McGregor Featherweight
56/6 per pair

CLAYTONS

Successors to H. Hodgson.
GUN SMITHS SPORTS OUTFITTERS
TOYS GAMES
6 NORTHGATE STREET,
IPSWICH
TELEPHONE 2309

John White SHOES for MEN

from
32/9

GET YOURS NOW

FROM

GRIMWADE'S
CORNHILL, IPSWICH

FOOTMANS

THE STORE OF EAST ANGLIA

MEN'S WHITE
TUNIC SHIRTS
Fully Shrunk
15/6 each
SIZES 14 to 17

After the match make our
RESTAURANT
your RENDEZVOUS FOR TEA
*Afternoon or High Tea served in the
largest Restaurant in East Anglia*

MEN'S POPLIN
PYJAMAS
Plain pastel shades of
BLUE, FAWN & GREY
Small, Medium & Outsize
19/11

THE STORE REMAINS OPEN UNTIL 6 p.m. ON SATURDAYS.

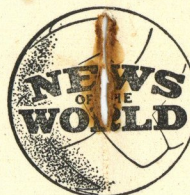
WATERLOO HOUSE, IPSWICH

PHONE 3737

IPSWICH TOWN

Colours: Blue & White

		1 PARRY		
	2 ACRES		3 FEENEY	
	4 MYLES	5 REES	6 PARKER	
7 REED	8 CROWE	9 GARNEYS	10 ELSWORTHY	11 McLUCKIE



Referee—

F. L. OVERTON (Derby).

Linesmen—

Red: R. G. Southgate
Yellow: F. Thoday

11 ADAM	10 GROVES	9 PYE	8 TURNER	7 CULLEN
6 SMITH	3 AHERNE	5 OWEN	4 MORTON	
		1 STRETEN	2 DUNNE	
		LUTON		

Colours: White

SCORE
WITH THE ACCURACY
OF A
CROYDON WATCH

Telephone 4110
Croydons
JEWELS · WATCHES · OF GOLD · SILVER
TAVERN STREET IPSWICH

Don't Forget

After the Match—

TOLLY

for

QUALITY

Launderers to Ipswich Town F.C.

**THE IPSWICH
STEAM LAUNDRY LTD.**
Alderman Road, Ipswich

For Service and
Satisfaction

LAUNDRY WORK
WEEKLY DELIVERIES
DRY CLEANING
(on our own premises)
48 HOUR SERVICE

'Phone 4407 for our van to call.

Write or call, for full particulars, Diocesan

House, Tower Street, Ipswich. (Tuesdays only).

FROM THE KICK-OFF

Read the fullest reports
and commentaries in
the largest sports
section in any Sunday
newspaper.

SUNDAY EMPIRE NEWS

Order your copy on the way home!

Everything for the
Scholar

SCHOOL STATIONERY
ARTIST MATERIALS
DRAWING INSTRUMENTS
SCHOOL BAGS
TRAVEL GOODS FOR
EVERY SCHOOL OCCASION

Walk in and walk around after the Match

SMITHS SUITALL

IN THE BUTTERMARKET
IPSWICH

Telephone 2304

FIXTURES

Football League (Division II)

Date.	Opponents.	Gd	Result.
1954.			
Aug. 21	Rotherham United -	A	2 3
" 25	Middlesbrough -	A	1 0
" 28	Luton Town -	H
Sept. 1	Middlesbrough -	H
" 4	Hull City -	A
" 8	Birmingham City -	A
" 11	Lincoln City -	H
" 15	Birmingham City -	H
" 18	Bury -	A
" 22	Stoke City -	H
" 25	Leeds United -	H
Oct. 2	Nottingham Forest -	A
" 9	Blackburn Rovers -	A
" 16	Fulham -	H
" 23	Port Vale -	A
" 30	Doncaster Rovers -	A
Nov. 6	Derby County -	A
" 13	West Ham Utd. -	H
" 20	(1) Bristol Rovers -	A
" 27	Plymouth Argyle -	H
Dec. 4	Swansea Town -	A
" 11	(2) Notts County -	H
" 18	Rotherham Utd. -	H
" 25	Liverpool -	A
" 27	Liverpool -	H

FIXTURES

Football Combination Cup

Date.	Opponents.	Gd	Result.
1954.			
Aug. 21	Leicester City -	H	1 1
" 25	Northampton Tn. -	H	4 0
" 28	Leicester City -	A
Sept. 2	Northampton Town -	A
" 4	Coventry City -	H
" 8	Watford -	H
" 11	Coventry City -	A
" 14	Watford -	A
" 18	Norwich City -	H
" 22	Birmingham City -	A
" 25	Norwich City -	A
" 29	Birmingham City -	H
Oct. 2	Luton Town -	H
" 9	Luton Town -	A

Football Combination League

Date.	Opponents.	Gd	Result.
Oct. 16	Bristol Rovers -	A
" 23	Aldershot -	H
" 30	Crystal Palace -	A
Nov. 6	Swindon Town -	H
" 13	Swansea Town -	A
" 20	Brentford -	H
" 27	Northampton Town -	A
Dec. 4	Fulham -	H
" 11	Plymouth Argyle -	A
" 18	Queens Park Rangers -	A
" 25	Leyton Orient -	A
" 27		

"GREEN UN"

HALF-TIME SCORE BOARD

- A. Birmingham v. Rotherham.
- B. Blackburn v. Swansea
- C. Bury v. Fulham.
- D. Derby v. Liverpool.
- E. Leeds v. Lincoln.
- F. Middlesbrough v. Stoke.
- G. Port Vale v. Plymouth.
- H. Crystal Palace v. Colchester.
- K. Swindon v. Norwich.
- L. Leicester Res. v. Ipswich Res.

LEAGUE DIVISION II.

	P.	W.	D.	L.	Goals	F.	A.	Pts.
Stoke City	...	2	2	0	0	5	1	4
Fulham	...	2	2	0	0	9	4	4
Rotherham	...	2	2	0	0	7	4	4
Plymouth	...	2	1	1	0	3	2	3
Luton Town	...	2	1	0	1	4	2	2
Swansea Town	...	2	1	0	1	6	4	2
Birmingham	...	2	1	0	1	3	3	2
Bristol Rovers	...	2	1	0	1	2	2	2
Ipswich Town	...	2	1	0	1	3	3	2
Lincoln City	...	2	1	0	1	3	3	2
Liverpool	...	2	1	0	1	3	3	2
Bury	...	2	1	0	1	4	4	2
Doncaster	...	2	1	0	1	4	4	2
Leeds United	...	2	1	0	1	4	4	2
Derby County	...	2	1	0	1	6	6	2
Blackburn	...	2	1	0	1	6	7	2
Hull City	...	2	1	0	1	1	2	2
Notts County	...	2	0	1	1	3	4	1
Middlesbrough	...	2	0	1	1	2	3	1
Port Vale	...	2	0	1	1	1	2	1
West Ham	...	2	0	0	2	4	10	0
Notts Forest	...	2	0	0	2	0	6	0

COMBINATION CUP.

	P.	W.	D.	L.	Goals	F.	A.	Pts.
Ipswich Town	...	2	1	1	0	5	1	3
Birmingham C.	...	2	1	1	0	8	5	3
Leicester C.	...	2	1	1	0	5	2	3
Norwich City	...	2	1	1	0	4	3	3
Luton Town	...	1	0	1	0	2	2	1
Coventry City	...	2	0	1	1	5	8	1
Watford	...	2	0	0	2	2	6	0
Northampton	...	1	0	0	1	0	4	0

IPSWICH GOALSCORERS.

League: Garneys, 2; Elsworthy, 1.

Combination: Callaghan, 3; Brown, 2.

Border League: Clarke (T.), Grimwade, Stannard.

continued from page 3.

one all the more opportunity to watch Walls and Pearson. Walls, who has been made captain of the Combination team, is clearly a centre-half of experience and ability. Pearson is small for a centre-forward but he gets up to a surprising height when necessary. He is a good footballer with a hard shot and a good brain.

This afternoon is of course a "red letter" day in Ipswich for it heralds the first Second Division match at Portman Road; thus we all extend an especially warm welcome to Luton Town, one of our "nearest" neighbours. They are a thoroughly good side and have been in the running for promotion several times. We await them with interest.

M.E.J.W.

1846-1954

Why not have the BEST
in Football Boots?

The TOM FINNEY Featherweight is the finest boot we have come across and we recommend it with every confidence.

OUR PRICE

42/6

Other men's lines from 22/6,
boys' sizes from 14/11.

PRICES BOOT STORES
IPSWICH

Corner of Brook Street
and Tackett Street

Telephone: 51173

REVETT'S

of
Berners Street

for your

CYCLING

and

MOTOR CYCLING REQUIREMENTS

CASH TERMS

EXCHANGES

Phone IPSWICH 2822

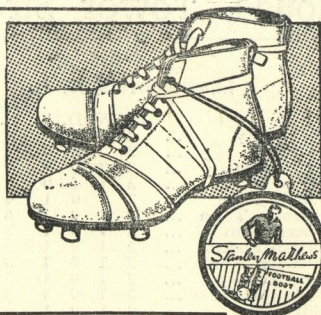


**C.W.S.
STANLEY MATTHEWS
FOOTBALL BOOTS**
must be good

Obtainable only at:—



FOOTWEAR SHOPS
Carr Street, Ipswich and Branches



SUPPORTERS NOTES

Congratulations to Tommy Parker from the Supporters' Association on reaching his 400th appearance. Well done Tommy—and what could be more fitting than the Middlesbrough win? A very fine performance. And congratulations must also go to the rest of the lads; this is certainly a good curtain-raiser for what we hope will be a successful season's football.

For the benefit of our readers who may have missed these notes last week, I mentioned that in view of the Association's extended activities this season, all our members will be recorded: many of you will have already become familiar with our new application forms. These are obtainable either from Portman Road, the Committee, or our many helpers. Membership still remains at 1/- a year minimum, and this entitles each member to a Handbook free of charge, and also to take part in any activities run by the Association for the benefit of Football

in the town. The Handbooks are almost ready and should be available very shortly; as soon as they come from the printers an announcement will be made through these notes.

Many of you who use the new terraces at Portman Walk end will see a very fine stone plaque erected. This is the work of our Assistant Secretary, Mr. Jack Hayward, designed, executed and presented by him to commemorate the Town's entry into Division II, and also to mark the erection of the terracing by the Supporters' Association. It is certainly a work of art and should be seen to be appreciated. On behalf of the Association—Thank you very much, Jack.

Our best wishes go to Mr. Eddie Schofield, who, as many of you know, is a long service Committee-man, and is at present in hospital. We hope to see you well, and back again at Portman Road soon.

D.R.

RAIL EXCURSIONS

SUNDAY 5th SEPTEMBER

STOWMARKET	—	1/9
DISS	—	3/9
NORWICH	—	6/6

(Buffet Car)

Ipswich dept. 12.0 noon

Return Norwich (Thorpe) 6.50 p.m. Diss 7.15 p.m.

Stowmarket 7.35 p.m.

Full details from Stations, Offices and Agencies

BRITISH RAILWAYS

E.A.D.T., IPSWICH.