



LUTON TOWN FOOTBALL AND ATHLETIC CO. LTD.

OFFICIAL
JOURNAL



Price 3d.



F.A. CUP—ROUND 3

SATURDAY, 12th JANUARY, 1952

LUTON TOWN v. CHARLTON ATHLETIC

“TRUE - FORM”

The Town's Leading Shoe Store

32, GEORGE STREET

FOR SHOES OF

QUALITY ★ CHARACTER ★ RELIABILITY



Lillywhite's International Team

versus

Any Colour

Home Ground: LEAGRAVE ROAD

K.O. 7.30 a.m.

Colours: LILYWHITE

Twenty Bobbers Match Every Saturday, 8 a.m.

1
Goal
B. IZZNESS

2
Right Back
R. EDWOOD
(Swedish)

3
Left Back
C. EDAR
(Canadian)

4
Right Half
O. K. FLORING
(Yugoslavian)

5
Centre Half
M. A. RITIMEPINE
(French)

6
Left Half
S. AWDUST
(Cosmopolitan)

7
Outside Right
L. A. UREL
(Chile)

8
Inside Right
P. LYWOOD
(Russian)

9
Centre Forward
P. O. PLAR
(French)

10
Inside Left
O. BEACHI
(African)

11
Outside Left
B. IRCH
(Finland)

Referee: F. AREDEEL (British)

Linesmen: L. Essdee, Czech (Black Flag)
L. Icence (Red Tape)

Players Numbered 4, 6, 7, 9, 10, 11 are Open to Free Transfer

LUTON BOBBERS STAND CLUB Telephone 2566

The winning number of the Penny - on - the Ball Ticket will be announced over the loud speakers at the interval. The person holding the winning ticket can go to the rear of the Main Stand after the game and for 3d. purchase the ball from Mr. C. W. Gregory.

The ticket number for the ball on Saturday, December 29th, 1951, was **37632**, and the supporter who had this number was—

Mr. J. FOX, 62, Windsor Street,
Luton, Beds.

The first game at home this year being a Cup-Tie
Will be watched at all angles by many a keen eye
The New Year calls to all to climb its golden slopes
We start upon a fresh hewn path, the high road of our hopes
With faith and hearts on fire, ready for the fray
Four goals last week tells us all that you know the way
We can do without a lot, if goals are gained
And that is the best way a problem can be explained
Good football teaches us the way to wait for something we desire
It teaches us the patience to "make-do" till we acquire
Goals smooth out the disappointments at the short delay
And give us a lot to talk about for the next few days
It also teaches us the folly of a stubborn point of view
Of jumping to conclusions, and of rushing matters through
We learn by old experience to play the waiting game
And yet while we are waiting we enjoy the game just the same
So don't be mastered by hardships that we are sure to meet
It is grand to go on fighting when we almost face defeat
So supporters you, too, play the game by hitting out square
And when you are trying to judge always try to be fair
Today's game looks like being a very hard fought battle
So don't forget Fans to use your voices, bells and rattles

LUTON TOWN FOOTBALL AND ATHLETIC CO. LTD.

Established 1885

Incorporated 1897

First Professional Side, Season 1891/92



Telephone 3151

President: Chas. Jeyes, Esq., C.A.

Vice-President: The Rt. Hon. The Lord Luke of Pavenham

Directors:

Chairman: Chas. Jeyes Esq., C.A. Vice-Chairman: Percival G. Mitchell, Esq.
A. F. England, Esq. Horace S. Hewson, Esq. Henry Richardson, Esq.
E. Hugh Woods, Esq. Philip W. Wright, Esq.

Secretary: Mr. Philip Coley

Team Manager: Mr. Dally Duncan

Honorary Medical Officer: E. J. Crarer, Esq., M.B., Ch.B.

Honorary Solicitors: Messrs Machin & Co., 17-19, George Street West, Luton

Hon. Auditors: Messrs Keens, Shay, Keens & Co., 11, George Street West, Luton

CLUB NOTES

ONCE more we are in the throes of Cup-Tie fever, and again have the pleasure of meeting a First Division side on our own pitch. Memories of our glorious display against Portsmouth only twelve months ago are still fresh in our minds, and here we have again the opportunity of bringing out our best against worthy Cup-Tie opponents. Charlton Athletic are a fairly recent acquisition to the Football League, for they did not come in until Season 1921-22, when they entered the Third Division (Southern Section) which was the season following our re-entry. They had many ups and downs in the Third Division, but won promotion Season 1928-29 to the Second Division. At the end of Season 1932-33 however they finished bottom and found themselves once more in the Third (South). Season 1933-34 they finished fifth place, but at the end of Season 1934-35 found them back in the Second Division, and at the end of Season 1935-36 they finished second only to Manchester United, and so were elected to the higher circle in Season 1936-37, finishing second to Manchester City. They have ever since remained in that august company, finishing fourth place Season 1937-38, third place Season 1938-39 and remaining fairly even since, although they just missed being relegated to the Second Division Season 1949-50 when they finished third from bottom, last season sixth from bottom. During all this activity however Charlton had two glorious seasons in the F.A. Cup Competition, appearing in the Final at Wembley Season 1945-46, when they were beaten after extra time by 4 goals to 1 by Derby County. Our team Manager "Dally" Duncan played against them that day and scored a very nice goal. Having smelt the Wembley atmosphere they must have found it was very good, for the following April saw them there again, this time to carry off the honour by beating Burnley by the only goal, and again extra time was needed. Although always giving a good account of themselves they have not since then been able to get further than the Fifth Round, season 1947/48, we losing on the same day at Shepherd's Bush. Last year in the Third Round, Charlton were knocked out by the losing Finalists Blackpool, but it required a replay at Blackpool before that Tie was finally settled. We can therefore see from all this, that we have something to beat today, if we are going to have any further interest in the Cup this season. We have no doubt it will be a thriller, and may the spoils go to the side most deserving of them.

We came within an ace of improving our away record at Nottingham last Saturday, but in the end had to be content with the knowledge that we had helped to provide one of the best games seen at Meadow Lane for a long time. To see nine such goals scored is ample value for anybody's money. Bernard Moore nearly made it 5-4 in our favour

only 5 minutes from the end which would have put the final issue beyond any doubt, but in trying to make sure placed the ball just outside. He actually scored a very nice goal but the Referee ruled that as Jack Taylor was standing in an "offside" position—though not in any way interfering with the play—he was offside. A great shame for we have seen similar goals scored against us which have been allowed to count. However the Referee was on the spot and so had to abide by his decision. Our chances of promotion have now, after losing two consecutive games, been badly blunted but there is still an outside chance for the stiffest part of our programme is now behind us and although we are only eight points from the bottom team, on the other hand we are only five from the top and our lads are playing well enough to improve on that position.

The "Stiffs" are doing very well indeed just now, for in their last three matches, all away from home, they have defeated Charlton Reserves and Norwich Reserves, and drawn with Ipswich Reserves. It is unfortunate that this good spell has come so late for it is almost certain that we shall be in the Second Division of the Football Combination League next season, but it is good to know that these youngsters can hold their own.

We saw an exceedingly good match here last Saturday, when our "A" Team entertained Tottenham's "A" team, winning by 6 goals to 3. There were 848 spectators and they enjoyed every minute of it. It is a great pity we cannot see these young lads in action more often but unfortunately we have not the facilities. We thank the Tottenham lads for giving us such entertainment and for the sporting manner in which they played the game.

We are sorry we must end these Notes with a word of dissension, but unfortunately it is necessary. The Referee at the Plymouth Reserves match here on December 1st reported to the Football Association that fruit of some kind was thrown at him at the Kenilworth Road end, also that fruit was thrown at the Plymouth goalkeeper at the Oak Road end. On top of this the Referee at our match with Leicester City a fortnight ago reported that Jackson, the Leicester left back, was struck in the face by a spectator in the Bobbers Stand "when the impetus of play caused the player to come in contact with the spectators' fence running parallel, and close to, the touch line." Now this is just not good enough for it is getting this Club a bad name, and in fact we have been ordered by the Football Association to post Warning Notices round our ground in prominent positions for one month from Monday, 14th January. If there is any recurrence of such bad behaviour then the consequences are going to be serious. If anyone is found misconducting himself he will be ejected forthwith and refused admission to the ground. Please therefore try and control yourselves, you guilty people, and let us show better manners.

Facing . .
BUTE STREET

Near the . .
TOWN HALL

**MEN'S
WEAR**

CHARLES MARES LTD., 65-67, George Street, LUTON



The STORE
where
VALUE
reigns
supreme

**BOY'S
WEAR**



Keep out the Cold
with
Dragon's Blood
An Old English Ale

Brewed by:

J. W. Green Limited, The Brewery, Luton



★ DAILY DELIVERIES
IN ALL DISTRICTS

**Randall &
Whiting Ltd.**

Wholesale and Retail
MILK
DISTRIBUTORS
Pasteurised and T.T.

HEAD OFFICE:
125, NORTH ST., LUTON
Telephone: Luton 599

★
DAIRY:
HAVELOCK RD., LUTON
and at
98-100, LUTON ROAD
DUNSTABLE

'Phone: LUTON 1961
Proprietor: R. HARRIS

'Rons'
**Gentlemen's
Hairdresser**
6, MILL STREET
LUTON
BEDS.

Saloon Service
Ground Floor
Appointments First Floor

LUTON TOWN

Shirts White
Knickers Black
Stockings Black with White Tops

2
Dunne
Right Back

4
Morton
Right Half

7
Davies
Outside Right

8
**Turner
or Moore**
Inside Right

Referee
Mr. J. G. WILLIAMS
(Arnold, Notts.)

11
Duffy
Outside Left

10
Kiernan
Inside Left

6
Hammond
Left Half

CHARLTON ATHLETIC

Shirts Red, White Collars
Knickers White
Stockings Red and White Hoops

3
Lock
Left Back

Streten
Goal

Owen
Centre Half

Stobbs
Centre



Vaughan
Centre

Upton
Centre Half

Bartram
Goal

F.A. CUP—Round 3

3
Aherne
Left Back

6
Watkins
Left Half

10
Taylor, J.
Inside Left

11
Mitchell
Outside Left

Linesmen—

Red Flag: Mr. L. S. BRUNSDON
(Reading)

Orange Flag: Mr. A. C. F. GISBORNE
(Oxhey, Herts.)

8
Cullum
Inside Right

7
Hurst
Outside Right

4
Fenton
Right Half

2
Campbell
Right Back

Kick - Off 2.15 p.m.

SPECTATORS ARE ASKED NOT TO CROSS THE PLAYING FIELD AFTER THE MATCH

GLAZING CONTRACTORS
LEADED LIGHT MAKERS

**PLATE
GLASS**
FOR ALL TRADES

MIRRORS. To any shape or
design.

RE-SILVERING. Old Mirrors
as good as NEW.

Decorative Art in Wallpapers
Quality Paints of All Kinds

**CHARLES BIRD
& SONS, LTD.**

Collington Street, Luton

Telephones: 1255-1256

HARRY CANHAM & SON

Export Packers
Export Leatherboard Post Boxes
Cardboard Box, Packing Case
Ply Box & Crate Manufacturers

GROVE ROAD, LUTON

TELEPHONE 456

When you've heard the final whistle

Come and try us for 106 D
H hammer or Plier U
Axe or Chopper N
P Mat or Mop S
h Brush or Broom T
o Enamel or Paint A
n Rope or Twine B
e Lock or Furniture L
Ash Handle or Stale E
Incinerator or Bin R
Netting or Wire R
9 & Co. (Luton) Ltd. D

Established 1879

SELL, MITCHELL & SONS

C. MITCHELL, F.A.L.P.A., F.V.I.

AUCTIONEERS, SURVEYORS, VALUERS,
ESTATE AGENTS AND PROPERTY MANAGERS

Sales by Private Treaty
Property and Chattel Auctions
Valuations and Surveys
Rents Collected
Mortgages Arranged

RESIDENTIAL, BUSINESS
and
INVESTMENT PROPERTIES
Always Available and Required

Telephone:
LUTON 2003 (P.B.X.)

Head Auction & Survey Offices:
7-9 Princess Street, Luton
(OFF STUART STREET)

Branch Estate Office:
85, Stuart Street, Luton
(Opp. POLICE COURT)

**HEILEY'S
RESTAURANT**

MILL STREET, Next to Gaumont Cinema

Special

**FISH & CHIP
DINNERS & TEAS**

served on match days

Seating Accommodation: 90

'Phone: Luton 3730 Proprietor: R. A. Heley

WILLIAMS & RICHARDSON

Radio, Television & Electrical Engineers

Agents for—

- ❖ MURPHY
- ❖ H.M.V.
- ❖ PHILLIPS
- ❖ PHILCO
- ❖ MARCONI
- ❖ FERGUSON

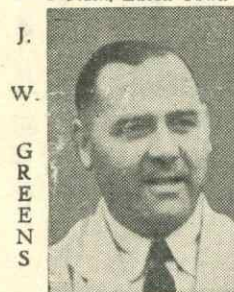
174, Biscot Road
& 17, DURHAM ROAD
LUTON

'Phone: 593 and 2012

Warden Tavern

2½ miles out of Luton
on main Bedford Road

Proprietor: **Tom Hodgson**
Ex-Captain, Luton Town F.C.



Luncheons
Wedding Receptions: Social
Functions: Evening Parties
Fully Licensed Large Car Park



Oyez! Oyez!

The
Old Way
to
Advertise

But today

Printing that Pleases

Does it Better

E. A.

**ALLEN
& SON (Luton) LTD.**

424, DUNSTABLE ROAD

'Phone LUTON 1626

TODAY'S HALF-TIME SCORES

NOTE: The letter in the Programme corresponds with the letter on the Board—thus A 0-1 means that the first-named club has scored 0 and their opponents 1.

FIRST LIST

F.A. CUP—ROUND 3

A	BARNLEY	COLCHESTER
B	BRADFORD	WEDNESDAY
C	BRENTFORD	QUEEN'S P. R.
D	BRISTOL ROV.	PRESTON
E	BURNLEY	HARTLEPOOLS
F	CARDIFF C.	SWINDON
G	CHELSEA	CHESTER
H	DONCASTER	BUXTON
K	FULHAM	BIRMINGHAM
L	HUDDERSFIELD	TRANMERE
M	IPSWICH T.	GATESHEAD
N	LEICESTER C.	COVENTRY

SECOND LIST

A	LEYTON O.	EVERTON
B	LIVERPOOL	WORKINGTON
C	MANCH. CITY	WOLVES
D	MANCH. UN.	HULL CITY
E	MIDDLESBRO'	DERBY CO'
F	NEWCASTLE	ASTON VILLA
G	NORWICH C.	ARSENAL
H	NOTTS. FOR.	BLACKBURN
K	NOTTS. CO'TY	STOCKTON
L	PORTSMOUTH	LINCOLN C.
M	READING	SWANSEA T.
N	ROCHDALE	LEEDS UNITED

THIRD LIST

A	ROTHERHAM	BURY
B	SCUNTHORPE	TOTTENHAM
C	SHEFFIELD UN.	NEWPORT
D	SOUTHEND	SOUTHAMPTON
E	SUNDERLAND	STOKE CITY
F	WEST BROM.	BOLTON W
G	WEST HAM	BLACKPOOL
H	BOURNEM'UTH	TORQUAY
K	BRISTOL CITY	GILLINGHAM
L	CRYSTAL PAL.	ALDRSHOT
M	NORTHANTS	MILLWALL A.
N	PLYMOUTH	EXETER CITY

LEAGUE MATCHES

H	BOURNEM'UTH	TORQUAY
K	BRISTOL CITY	GILLINGHAM
L	CRYSTAL PAL.	ALDRSHOT
M	NORTHANTS	MILLWALL A.
N	PLYMOUTH	EXETER CITY

AFTER THE MATCH

MAKE

'The Cafe'

YOUR GOAL

AND

BE CERTAIN OF

A Good Meal

AT A

MODERATE

CHARGE

34, Chapel Street
LUTON

Motorists!

Fit

**TRIPLEX
SAFETY
GLASS**

Consult

**OGDEN &
CLEAVER LTD.**

(GLASS DEPT.)

Stuart Street, Luton

'PHONE 746-7

BEDFORDSHIRE

Building Society

Investments Accepted At

2¹⁰/₄ % p.a.

CLEAR OF INCOME TAX

16, KING STREET, LUTON

Branch Manager : C. L. Robson

Telephone: 4577

Managing Director:

H. J. Weller, J.P., F.C.I.I.

Harpur Street, Bedford 'Phone 4547-8

FIXTURES, 1951-52**FIRST XI Division II**

F. A.

			1950/51			
Sat., Aug. 18	Swansea Town	...	3 1	H	2 2	
Mon., " 20	Sheffield United	...	1 2	A	0 3	
Sat., " 25	Bury	...	1 4	A	1 0	
Wed., " 29	Sheffield United	...	0 0	H	2 1	
Sat., Sept. 1	Leicester City	...	1 3	A	3 3	
Wed., " 5	Barnsley	...	1 6	A	2 1	
Sat., " 8	Notts. County	...	1 1	H	6 0	
" 15	Queens Park Rangers	...	1 1	A	0 0	
" 22	Blackburn Rovers	...	1 1	H	1 1	
" 29	Hull City	...	3 5	A	2 1	
Sat., Oct. 6	Notts. Forest	A	0 2	
" 13	Brentford	...	2 0	H	0 2	
" 20	Doncaster Rovers	...	2 5	A	1 1	
" 27	Everton	H	1 1	
Sat., Nov. 3	Southampton	...	1 1	A	3 2	
" 10	Sheffield Wednesday	H	5 3	
" 17	Leeds United	...	1 2	A	1 1	
" 24	Rotherham United	H	1 1	
Sat., Dec. 1	Cardiff City	...	1 2	A	0 3	
" 8	Birmingham City	...	1 1	H	2 4	
" 15	Swansea Town	...	2 0	A	3 0	
" 22	Bury	...	4 2	H	2 1	
Tues., " 25	West Ham United	...	1 2	A	0 3	
Wed., " 26	West Ham United	...	1 1	H	6 1	
Sat., " 29	Leicester City	...	0 2	H	1 2	
Sat., Jan. 5	Notts. County	...	2 2	A	4 5	
" 12	Charlton A. (F.A. Cup-3)	H	...	
" 19	Queens Park Rangers	...	2 0	H	...	
" 26	Blackburn Rovers	...	0 1	A	...	
Sat., Feb. 2	F.A. Cup—Round 4	
" 9	Hull City	...	1 2	H	...	
" 16	Notts. Forest	H	...	
" 23	F.A. Cup—Round 5	
Sat., Mar. 1	Brentford	...	0 1	A	...	
" 8	Doncaster Rovers (6)	...	3 1	H	...	
" 15	Everton	A	...	
" 22	Southampton	...	0 1	H	...	
" 29	Sheffield Wednesday	A	...	
Sat., Apr. 5	Leeds United	...	2 3	H	...	
" 12	Rotherham United	A	...	
Mon., " 14	Coventry City	...	1 1	H	...	
Tues., " 15	Coventry City	...	1 4	A	...	
Sat., " 19	Cardiff City	...	1 1	H	...	
" 26	Birmingham City	...	0 3	A	...	
Sat., May 3	Barnsley	...	1 1	H	...	

RESERVE FIXTURES Football Combination F. A.

			1950/51			
Sat., Aug. 18	Tottenham Hotspur	A	0 0	
Wed., " 22	West Ham United	H	0 3	
Sat., " 25	Portsmouth	H	0 3	
Thurs., " 30	West Ham United	A	1 5	
Sat., Sept. 1	Ipswich Town	H	1 2	
Wed., " 5	Bristol City	H	5 2	
Sat., " 8	
Wed., " 12	Arsenal	...	1 1	A	5 6	
Sat., " 15	Brighton & Hove A.	H	2 3	
Wed., " 19	Brighton & Hove A.	A	4 4	
Sat., " 22	Bournemouth & B.	A	0 4	
Wed., " 26	Swindon Town	A	1 1	
Sat., " 29	Arsenal	...	1 3	H	2 2	
Wed., Oct. 3	Swindon Town	H	3 3	
Sat., " 6	Southampton	H	4 1	
" 13	
" 20	Watford	H	2 1	
" 27	Plymouth Argyle	A	2 3	
Sat., Nov. 3	Bristol Rovers	...	3 0	H	2 7	
" 10	Southampton	A	3 2	
" 17	Norwich City	H	2 3	
" 24	Watford	A	1 1	
Sat., Dec. 1	Plymouth Argyle	H	2 6	
" 8	Bristol Rovers	...	4 5	A	3 2	
" 15	Tottenham Hotspur	A	0 2	
Tues., " 22	Portsmouth	A	1 2	
Wed., " 25	Charlton Athletic	H	3 0	
Sat., " 26	Charlton Athletic	A	2 1	
Sat., " 29	Ipswich Town	A	1 1	
Sat., Jan. 5	Norwich City	A	1 0	
" 19	Bristol City	A	...	
" 26	Bournemouth & B.	H	...	
To be arranged	
Combination Cup	
Sat., Jan. 26	Northampton Town	...	7 0	H	...	
Sat., Feb. 2	Northampton Town	...	4 1	A	...	
" 9	
" 16	Norwich City	...	4 4	A	...	
" 23	Ipswich Town	...	0 3	A	...	
Sat., Mar. 1	Watford	...	1 1	H	...	
" 8	Birmingham City	...	1 2	A	...	
" 15	Leicester City	...	1 0	H	...	
" 22	
" 29	Norwich City	...	2 1	H	...	
Sat., Apr. 5	Watford	...	2 2	A	...	
Fri., " 11	Coventry City	...	1 1	H	...	
Sat., " 12	Birmingham City	...	6 0	H	...	
Mon., " 14	Coventry City	...	1 1	A	...	
Sat., " 19	Leicester City	...	2 2	A	...	
" 26	Ipswich Town	...	2 3	H	...	

LEAGUE TABLES, 1951-52

Up to and including January 5th, 1952

LEAGUE DIVISION II

	Pld.	Won	Drn.	Lost	For	Agst.	P.
Cardiff City	26	13	7	6	45	29	33
Sheffield Wed.	27	13	6	8	62	45	32
Birmingham City	27	12	8	7	38	32	32
Sheffield United	27	13	5	9	63	45	31
Brentford	26	12	7	7	33	25	31
Rotherham Utd.	26	13	5	8	56	45	31
Leicester City	26	11	7	8	53	41	29
Notts Forest	27	10	9	8	50	44	29
LUTON TOWN	26	10	8	8	49	44	28
Leeds United	26	10	8	8	37	37	28
Barnsley	26	9	9	8	41	42	27
Notts County	27	11	4	12	45	46	26
Everton	27	9	8	10	40	46	26
Doncaster Rovers	27	8	9	10	37	36	25
West Ham United	27	9	7	11	40	55	25
Bury	27	9	6	12	47	43	24
Southampton	27	8	7	12	38	56	23
Blackburn Rovers	27	10	3	14	35	44	23
Swansea Town	27	6	9	12	44	53	21
Queens Park Rangers	27	6	9	12	38	60	21
Hull City	27	7	6	14	39	44	20
Coventry City	26	8	4	14	37	55	20

FOOTBALL COMBINATION—Section "B"

	Pld.	Won	Drn.	Lost	For	Agst.	P.
Tottenham Hotspur	26	20	1	5	58	23	41
Arsenal	27	16	6	5	61	30	38
Plymouth Argyle	29	18	2	9	74	54	38
West Ham United	28	15	5	8	62	42	35
Charlton Athletic	29	15	4	10	71	55	34
Southampton	26	13	6	7	54	39	32
Portsmouth	27	14	1	12	59	56	29
Bournemouth	28	12	3	13	43	39	27
Norwich City	27	13	1	13	43	46	27
Ipswich Town	25	11	3	11	43	43	25
LUTON TOWN	28	9	7	12	56	68	25
Watford	28	8	6	14	33	49	22
Brighton & Hove	29	7	8	14	44	68	22
Bristol Rovers	24	6	4	14	45	57	16
Bristol City	28	7	1	20	32	64	15
Swindon Town	27	2	6	19	37	82	10

Next Match, Saturday, January 19th, 1952

FOOTBALL LEAGUE—DIVISION II

KICK-OFF 2.45 p.m.

LUTON TOWN v. QUEENS PARK RANGERS

ADMISSION : Centre Stand 6/- : Stand and Enclosure 3/6, Boys 2/- : Ground (under cover) 2/- : Ground (Kenilworth Road) 1/6, Boys 1/-

G. A. WILD & SONS

THE
TOWN'S LEADING SPORTS OUTFITTERS
14, MANCHESTER STREET, LUTON

Also at . . .

'Phone No. 780

103, HIGH STREET NORTH, DUNSTABLE

'Phone No. 275

Suppliers to the Luton Town Football Club

Your Goal for all leading makes of Sports Goods

AGENTS FOR

Embekay, Manfield, Cotton Oxford, Shillcock, Kingswell, Alex James
FOOTBALL BOOTS

We hold a grand range of—

FOOTBALL JERSEYS : KNICKS : HOSE : GOAL KEEPERS'
SWEATERS : : SHIN GUARDS : : TRACK SUITS, Etc.

Selection of FOOTBALL SHIRTS in Stock

Stocks of **ASSOCIATION FOOTBALLS** include—
Thomlinson's Improved T Pattern, Stuart Surridge Straight Eighteen,
Webbers Premier, The Tommy Lawton

A choice of nozzle or valve pattern may be had in these makes

Other Makes in Stock—SLAZENGERS, CROOKS, GILBERTS, Etc.

Agents for 'B.S.A.', 'Webley' and 'Diana' **AIR RIFLES**

BRISTLE, and PLASTICINE DARTBOARDS in Stock
DARTS to suit every Player—

JIM PIKE : : LEO NEWSTEAD : : JOE HITCHCOCK Etc.

Agents for the
'Bedfordian' Darts and Flights

The best range of
Feather Flights in the County

Stockists for all leading makes of—
RUGBY, BADMINTON, HOCKEY, SQUASH and BOXING EQUIPMENT

Indoor Games a speciality

Regulation Table Tennis Tables in stock