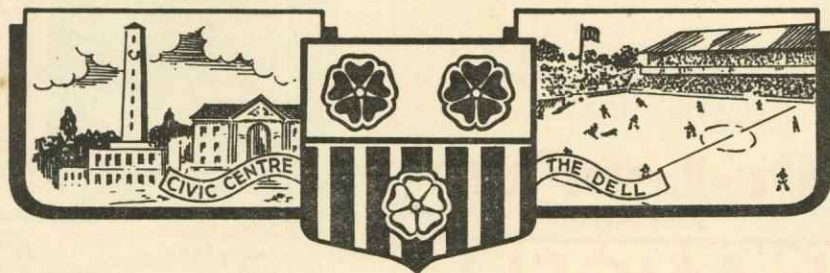


# SOUTHAMPTON FOOTBALL CLUB



*President :*

**Vice-Admiral Earl Mountbatten of Burma, K.G., P.C., G.M.S.I., G.C.V.O., D.S.O.**

*Chairman :*

**J. R. Sarjantson, Esq.**

*Directors :*

**H. G. Blgrave, Esq.**

**John Corbett, Esq.**

**C. J. Cosgrove, Esq.**

**G. E. H. Prince, Esq., O.B.E.**

**R. J. Stranger, Esq., C.B.E., M.C.**

**R. W. Jukes, Esq.**

**W. Toomer, Esq.**

**W. Penn Barrow, Esq.**

*Hon. Consultant Orthopaedic Surgeon — Mr. H. H. Langston*

*Hon. Medical Officer — Dr. D. B. Ramsay*

*Secretary Manager—*

**Sidney T. Cann**

*Asst. Secretary—*

**M. Bates**

Official Programme **3<sup>d</sup>**

# LUTON TOWN

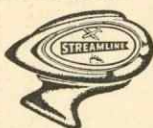
FOOTBALL LEAGUE DIVISION 2

Saturday, 3rd November, 1951

Kick-off **3.0** p.m.

**SOUTHAMPTON  
Streamline Taxis**

Four  
Passengers



No Extras

24

HOUR  
SERVICE

Phone : **7 6 3 2 1**

**When visiting the Dell leave your**

**Car under supervision at the**

**GROSVENOR SQUARE  
GARAGES (So'ton) Ltd.**

**2 GROSVENOR SQUARE, (1 minute from  
(Civic Centre) OPEN 7 a.m. to 10 p.m. for  
Petrol, Oils and Accessories**





The  
Finest  
Fruit  
Squash

The incomparable blend of luscious  
sunripe orange juice and the tang  
of refreshing lemon juice.

**"Or-Lem" LTD.**  
SOUTHAMPTON

**J. ANGELL**  
& SONS LTD.

Builders & Contractors  
Decorators & Plumbers

9 West Road, Southampton

Phone: Woolston 88085

2 LINES

Tommy  
Trump  
says:-  
"A winner  
on all grounds"  
**DOUBLE ACE**  
The ACE of  
cigarettes 10 for 1/3

Insist on  
**FEATHERY FLAKE**  
THE QUALITY  
SELF RAISING FLOUR

WE SPECIALISE IN  
**High Class Printing**  
and . . . Quick Service  
Why not try us next time?  
**R. R. SIMMONS & CO., LTD.**  
2 THREEFIELD LANE :: SOUTHAMPTON  
Phone 4921

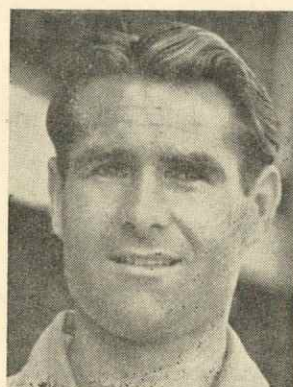
# FIXTURE LIST—First Team

Last Season's results are shown in brackets  
(2-0) Southampton's score appearing first

1951					
Aug.	18	Everton	(—)	H	10
	22	Notts Forest	(—)	A	03
	25	Barnsley	(2-1)	A	13
	29	Notts Forest	(—)	H	52
Sept.	1	Sheffield Wed.	(—)	A	13
	3	Leicester City	(1-3)	A	03
	8	Leeds United	(2-0)	H	00
	12	Doncaster Rovers	(1-1)	H	20
	15	Rotherham U.	(—)	A	14
	22	Cardiff City	(1-1)	H	11
	29	Birmingham C.	(1-2)	A	11
Oct.	6	Hull City	(2-3)	H	11
	13	Blackburn R.	(0-1)	A	10
	20	Q.P.R.	(0-0)	H	11
	27	Notts County	(2-2)	A	43
Nov.	3	Luton Town	(1-1)	H	
	10	Bury	(0-0)	A	
	17	Swansea Town	(2-1)	H	
	24	(1) F.A. Cup Coventry City	(1-1)	A	
Dec.	1	West Ham U.	(2-2)	H	
	8	Sheffield U.	(2-1)	A	
	15	(2) F.A. Cup Everton	(—)	A	
	22	Barnsley	(1-0)	H	
	25	Brentford	(0-4)	A	
	26	Brentford	(0-0)	H	
	29	Sheffield Wed.	(—)	H	
1952					
Jan.	5	Leeds United	(3-5)	A	
	12	(3) F.A. Cup Rotherham U.	(—)	H	
	19	Cardiff City	(2-2)	A	
Feb.	2	(4) F.A. Cup Birmingham C.	(0-2)	H	
	9	Hull City	(1-4)	A	
	16	(5) F.A. Cup Blackburn R.	(1-1)	H	
Mar.	1	(6) F.A. Cup Q.P.R.	(0-1)	A	
	8	Notts County	(1-0)	H	
	15	Luton Town	(1-0)	A	
	22	English Schools' Int. Trial		H	
	29	Bury	(1-0)	H	
Apr.	5	Swansea Town	(1-2)	A	
	12	Coventry City	(5-4)	H	
	14	Doncaster R.	(0-0)	A	
	19	West Ham U.	(0-3)	A	
	26	Sheffield U.	(1-0)	H	
May	3	Leicester City	(2-2)	H	

## FOOTBALL LEAGUE DIVISION II UP TO AND INCLUDING OCT. 27

	P	W	L	D	F	A	Pts
Sheffield U.	14	10	2	2	44	18	22
Rotherham	14	8	4	2	35	22	18
Brentford	14	7	4	3	18	20	18
Notts County	15	7	5	3	27	22	17
Swansea	15	5	3	7	31	27	17
Luton Town	14	5	3	6	21	18	16
Notts Forest	15	5	4	6	26	23	16
Sheffield Wed.	15	6	5	4	28	29	16
Cardiff City	14	6	5	3	24	19	15
Leicester C.	14	5	4	5	26	21	15
Southampton	15	5	5	5	20	25	15
Bury	14	5	5	4	22	19	14
Doncaster R.	15	4	5	6	20	20	14
Leeds U.	14	5	5	4	20	22	14
Queen's P.R.	14	3	3	8	18	22	14
Birmingham	15	3	4	8	17	22	14
West Ham U.	15	4	7	4	21	29	12
Everton	15	4	7	4	20	30	12
Barnsley	14	5	7	2	16	26	12
Hull City	15	3	7	5	23	29	11
Coventry C.	14	3	7	4	17	32	10
Blackburn R.	14	2	10	2	15	29	6



(By kind permission of  
'Southern Daily Echo')

★  
**LEN WILKINS** — A Southampton born player, who was discovered in a works' team. Has played representative football for the F.A. Originally a right half-back, he played at full-back last Season, but has recently made a success at centre-half. Len is 5' 10" in height, and is a resolute tackler.

## CLUB NOTES

I think you must all agree that the Floodlit Match against Portsmouth on October 22nd, was a great success, and that a very fine game was witnessed by everyone present. Both teams enjoyed the game enormously and the Portsmouth Directors were very enthusiastic about the possibilities of floodlighting, and are going ahead with plans to instal it at Fratton Park, when it is hoped that we shall be the Club to play them in their opening match.

There will be a Floodlight Match on Monday, November 12th when we entertain a very strong Army XI, consisting of the following players: Anderson (Leicester) Wilkins (Brighton) Mansell (Portsmouth) Glen (Aberdeen) Dodgin (Fulham) Fenton (Blackpool) Jackson (Leyton O.) Brooks (Reading) Smith (Chelsea) Cameron (Q.P.R.) Henderson (Portsmouth).

Our boys evidently gained confidence from their display against Portsmouth, because they carried on with the good play against Notts County, and had a grand away win. They played really grand football, particularly in the first half, when nearly all the chances they made were accepted. Unfortunately, Ellerington had a knock in the first half, and in the second, when we were under heavy pressure, he was not his usual self, but the team defended stoutly, and were unfortunate to concede another goal.

To-day, we welcome our visitors from Luton. Up to the present, they have done exceptionally well, and we feel sure that a very good game will result, and hope that the best team may win.

We are sorry to report that Peter Sillett, who has been doing so well in our team in recent matches, has now gone into the R.A.F. to do his National Service. We hope, of course, that we shall be able to play him when it is possible for him to get leave, but naturally, this will not be for some weeks.

We should also like to express the hope that Eric Webber will be successful in his new position as Player-Manager to Torquay United F.C. Eric has been a grand servant to us, and a marvellous Club-man. He deserves all the success that may come his way and I am sure all our good wishes go with him.

During the week, we also transferred Ken Wilkins to Exeter City. We hope the change will be of great benefit to him, and give him some very good experience, so that when the time arrives, we may recall him to Southampton.

Mr. Allen, the Secretary of the Albion Band, wishes to announce that they are very short of collectors on match days. He will be very pleased to hear from anyone who is interested in undertaking this job.

Mr. Allen's address is:—

"Gwenern," Chaucer Road, Thornhill, Southampton.



# WATNEYS



ON SALE IN THE CLUB BARS

**X A DRAW**

**I HOME**

**2 or AWAY**

## SOUTHAMPTON

Red and White Vertical Striped Shirts : Black Knickers

**Kiernan**

**Ellerington**

**Gregory**

2

**Horton**

**Wilkins L.**

**Mallett**

**McGowan**

**Brown**

**Dudley**

**Edwards**

REFEREE :

Mr. A. BOND  
of Fulham

Tropical  
Fish  
—  
Monkeys  
—  
Rufus Stone

Sir  
Walter  
Tyrrell

Hampshire's  
Famous  
Inn  
—  
New Forest

LINESMEN :  
Mr. P. G. DREWRY  
(Red Flag)  
Mr. A. HILL  
(Yellow Flag)

**Mitchell** **Davie** **Stobbart** **Taylor** **Davies**

**Watkins**

**Owen**

**Morton**

**Aherne**

**Cooke**

**Streten**

White Shirts : Black Knickers : Black Stockings with White Tops

**LUTON TOWN**

# FOOMER'S SPORTS HOUSE

Official Outfitters to the

**Southampton F.C.**

**9 LONDON ROAD**

Telephone : 3694

## FIXTURES—Second Team Southampton's score appears first FOOTBALL COMB. LEAGUE

1951				
Aug. 18	Plymouth Argyle	A	30	
21	Bristol City	A	20	
25	Watford	H	20	
27	Tottenham Hotspur	A	02	
Sept. 1	Charlton Athletic	A	10	
5	Charlton Athletic	H	12	
8	Swindon Town	A	22	
10	Norwich City	H	21	
15	Portsmouth	H	42	
19	Swindon Town	H	31	
22	Brighton & Hove A.	A	22	
26	Bristol Rovers	H	51	
29	Brighton & Hove A.	H	52	
Oct. 1	Tottenham Hotspur	H	01	
6	Luton Town	A	14	
13	Bristol City	H	40	
20	Arsenal	A	11	
27	Bournemouth & Bos.	H	11	
Nov. 3	West Ham United	A		
10	Luton Town	A		
17	Ipswich Town	A		
24	Arsenal	H		
Dec. 1	Bournemouth & Bos.	A		
8	West Ham United	H		
15	Plymouth Argyle	H		
22	Watford	A		
26	Bristol Rovers	A		
29				
1952				
Jan. 5	Ipswich Town	H		
12	Norwich City	A		
19	Portsmouth	A		
1952				
Jan. 23	Swindon Town	H		
26	Bournemouth & Bos.	H		
Feb. 2	Bristol City	H		
9	Bournemouth & Bos.	A		
16	Swindon Town	A		
23	Plymouth Argyle	H		
Mar. 1	Bristol City	A		
8	Swansea Town	H		
15				
22	Cardiff City	A		
29				
Apr. 5	Cardiff City	H		
11	Bristol Rovers	A		
12	Swansea Town	A		
14	Bristol Rovers	H		
19	Plymouth Argyle	A		
26				

## Football Combination League

Section B

UP TO AND INCLUDING OCT. 27

		P.	W.	D.	L.	F.	A.	Pts.
Southampton	18	10	4	4	38	21	24	
Plymouth A.	17	11	2	4	47	32	24	
Tottenham	16	11	1	4	30	15	23	
Charlton	18	10	3	5	41	30	23	
Arsenal	16	8	4	4	33	21	20	
Ipswich Town	17	9	2	6	31	28	20	
West Ham	18	8	3	7	38	32	19	
Norwich City	17	9	1	7	31	30	19	
Bournemouth	17	7	2	8	23	19	16	
Brighton	17	6	4	7	31	42	16	
Portsmouth	16	7	1	8	34	32	15	
Watford	17	6	3	8	20	25	15	
Luton T.	16	4	5	7	35	42	13	
Swindon	17	2	5	10	29	48	9	
Bristol R.	16	3	3	10	20	37	9	
Bristol City	17	2	1	14	13	40	5	



**Transport**

**Storage**

**Distribution**

Warehouses at—  
**Parsonage Road,  
Old Mill Quay**

and at **HYTHE** (for Bulk Storage)

## Victory Transport Ltd.

Registered Office—

**Old Mill Quay,  
Millbank Street**

**Southampton**

Phone — 3301 (2 lines)

## SOUTHAMPTON HAMTUN HOUSE

**HOTEL**

**HULSE ROAD**

Excellent centre for Tours. Near  
Winchester, New Forest, Bournemouth  
and Salisbury. Trips to Isle of Wight.  
Near Docks and Airport. Garage  
Fully Licensed 2 mins from the Dell  
Terms 12/6 or 15/6. B. & B.

Telephone : 446611

## South Western Motors

MARSH LANE — SOUTHAMPTON

'Phone 2313

**Modern Coaches**

**for**

**Private Hire**

## HANTS AND DORSET MOTOR SERVICES LTD.

—\* **SPECIAL** \*—  
**THEATRE TRIPS**

Every Monday, Wednesday and Saturday

**THEATRE ROYAL & EMPIRE THEATRE**

**PORTSMOUTH**—Theatre Tickets available

Depart—Grosvenor Square 7 p.m. Fare 3/9

**October 26th - 27th — Newbury Races**

11.15 a.m. — Fare 6/6

For Full Details apply—

Hants and Dorset Motor Services Ltd.  
Tours Dept., Bedford Place, Southampton.  
(Tel. 3222)



# TWYFORD HOUSE HOTEL

TELEPHONE 4213

\* \* \*

A Quiet, Comfortable  
Private Hotel

Convenient to Bus and Railway

H. and C., Gas Fires all Bedrooms  
Comfortable Lounge and Waiting Room

\* \* \*

FREE CAR PARK

HULSE ROAD :: SOUTHAMPTON

## Travel to the Match

by Train with a

# CHEAP TICKET

issued from

Stations over a wide area

See handbills  
for details

BRITISH RAILWAYS

## HALF-TIME SCORE BOARD

A	Bolton	v	Portsmouth	A
B	Burnley	v	Aston Villa	B
C	Charlton Ath.	v	Derby	C
D	Fulham	v	Manchester C.	D
E	Manchester U.	v	Huddersfield	E
F	Middlesbrough	v	Arsenal	F
G	Newcastle	v	Liverpool	G
H	P.N.E.	v	Sunderland	H
J	Stoke City	v	Chelsea	J
K	Tottenham H	v	Wolves	K
L	West Bromwich	v	Blackpool	L
M	Birmingham	v	Barnsley	M
N	Brentford	v	Coventry	N
O	Cardiff	v	Hull	O
P	Doncaster	v	Swansea	P
Q	Everton	v	Bury	Q
R	Leeds	v	Q.P.R.	R
S	Leicester	v	Sheffield U.	S
T	Notts Forest	v	West Ham	T
U	Rotherham	v	Blackburn	U
V	Sheffield Wed.	v	Notts County	V
W	Bristol Rovers	v	Bournemouth	W

## Next Home Match

Saturday, November 10th

Kick-Off **3.0** p.m.

FOOTBALL COMBINATION LEAGUE

# LUTON TOWN

## GOAL SCORERS

### FIRST TEAM

Brown 8 Dudley 4 (1F) Day 3 Bates 1 Curtis 1 Edwards 3 (1F)  
Horton 1 Wilkins, L. 1

### SECOND TEAM

Judd 10 Lowder 7 Wilkins, K. 6 Jones 3 Bates 2 Brown 2  
Page 2 Purves 2 Elliott 1 Hayward 1 McGowan 1 Sillett 1 (Pen.)