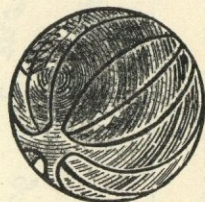


THE
LUTON TOWN FOOTBALL
AND ATHLETIC CO
LTD.

OFFICIAL
JOURNAL

COMPLIMENTARY

PRICE
TWO PENCE



FOOTBALL LEAGUE—DIVISION II

SATURDAY, 3rd MARCH, 1951

LUTON TOWN v. NOTTS COUNTY

“TRUE - FORM”

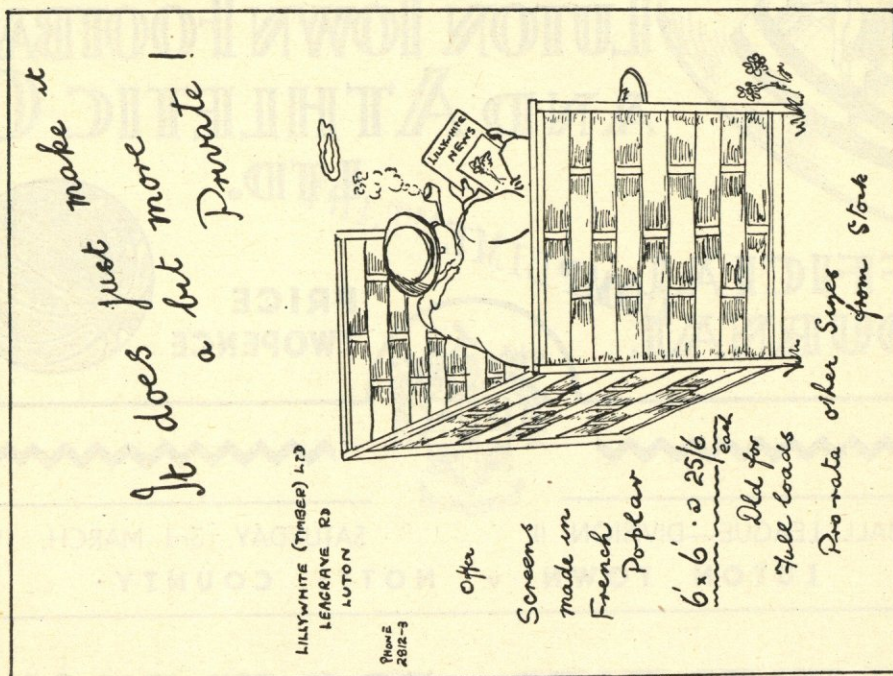
The Town's Leading Shoe Store

32, GEORGE STREET

FOR SHOES OF

QUALITY ★ CHARACTER ★ RELIABILITY



LILLYWHITE (Timber) LIMITEDT
I
M
B
E
R
M
E
R
C
H
A
N
T
S
.Phone:
LUTON
2812/3T
I
M
B
E
R
M
E
R
C
H
A
N
T
S
.Phone:
LUTON
2812/3

LEAGRAVE ROAD SAWMILLS, LUTON, BEDS.

LUTON BOBBERS STAND CLUB Telephone 2566

The winning number of the Penny-on-the-Ball Ticket will be announced over the loud speakers at the interval. The person holding the winning ticket can go to the rear of the Main Stand after the game and for 3d. purchase the ball from Mr. Rogers.

The ticket number for the ball on Saturday, 19th February, 1951, was **26222**, and the supporter who had this number was—

Mr. W. A. BARFORD,
56, Saxon Road, Luton, Beds.

**JOIN THE
BOBBERS STAND CLUB***Application Forms**available from the*

HON. SECRETARY, BOBBERS STAND CLUB
BEECH HILL PATH, LUTON

Membership Fee : : **1/2 per year**

CLUB NOTES

To come away from Deepdale last Saturday with only one goal scored against us was a very good achievement especially when is seen Preston's splendid isolation at the top of the Table at the moment. Particularly is this better appreciated when the fact is taken into consideration that Bud Ahern was off the field for quite a time and when he did return it was to take up a wing position, for after his knock he did not know much about the rest of the game at all. Therefore with only ten effective men for such a large part of the game on the present leader's own ground and then to be defeated by the only goal is very creditable. Much credit for such a narrow defeat must go to Bernard Streten for a very fine exhibition of custodianship, but all fought well and it was very pleasing to note that when Jacky Taylor took up the right half position when Bud had his accident he played very well and certainly did not appear out of position. We do lament the chance which was not taken by George Stobbart when right through, his shot missing the upright by inches, and again when a Stobbart "special" hit the back of the net from the edge of the penalty box only for the Referee to give him offside, a decision we strongly disagreed with, for it seemed to us to be a perfectly good goal. However a decision had been made and we had to abide by it, but it was very disappointing and of course we would have been well away if those two incidents had resulted in goals being credited to us. Week after week we are told by our successful opponents that we are playing too well to go down, but the fact remains that we continue to lose precious points week after week and now we are again holding everybody else up. We did think that the turn of the New Year would bring a change in our fortunes, but so far they have not materialised, but we keep hoping. The players certainly have not resigned themselves to appearing in a lower division next season.

The game here last week against Birmingham Reserves did us all good. Birmingham had by no means a poor team on the field, most of them having first team experience, but our lads in the second half especially played magnificent football and altogether we saw six lovely goals. If only the news from Preston had been better we who saw the Stiff's match would have had a very nice week-end, despite the weather. A record of fifteen goals against seven in four matches, three of those away from home, is very good going, and the way these lads are playing at the moment is good entertainment. If they can avoid defeat at Ipswich today we hope to see a good crowd here next Saturday when the Stiffs play Leicester City Reserves.

We have a very attractive match here this afternoon when we have the pleasure of entertaining Notts. County in a League II fixture. After a very uncertain start the County seem to have found a good combination and are playing quite well just now. Last week at home, despite the absence of Lawton for quite a long time through a kick on the head in the first few minutes, they won comfortably against Sheffield United by three clear goals. The Notts. team for today's match was very uncertain

as these Notes were being penned, for Lawton was still in bed but was hopeful of being fit in time to play. We sincerely hope Tommy Lawton is here today for undoubtedly the County play much better to his leadership and he is still a good player whom spectators like to see. There is also Leon Leuty in the side whom some critics consider a better centre half these days than Franklin, and of course Jacky Sewell who has come right back into form and has been scoring quite a few goals lately. He and Sid Owen will be seeing quite a lot of each other soon, for both, as well as Frank Broome, have been selected to join the party travelling to Australia this next Close Season. With the weather at last showing signs of relenting after a long bad spell, we should see some very good football today on the firmer going.

We are very pleased to note that Iorwerth Hughes has again been selected to play for his country against Ireland at Belfast on Wednesday next. Although Ivor has not been able to command a place in the senior side due to the brilliant displays of Bernard Streten since his recall to the first team, it is very gratifying to note that the Welsh Selectors have not allowed this position to prejudice Ivor's chances of further recognition. We all at Luton sincerely hope he has a good match and further enhances his good reputation.

The Luton Band (most of us still think of it as the Luton Red Cross Band) is with us once more and we trust everybody will welcome their return. They are undoubtedly a very fine Band and everybody will be very happy if their return coincides with a return of our fortunes. A collection will be made by hand at half-time. Please all try and put something in the boxes. If each one of you merely places one penny in the box as it comes round the receipts of the Band will be increased by at least £50 each first team match. The lack of funds can be very stultifying to a Band of this size and so we ask you all to put something in the "kitty." The Band will be on duty here each first team match to the end of the season with the exception of our next home match against Bury in two weeks time. This is because of a previous engagement.

Next Saturday morning, kick-off 11 o'clock, the Bedfordshire County Schools F.A. are staging a match between Bedfordshire Boys and Berks., Bucks. and Oxon Boys. We hope quite a number of you will come down and see this match, for some very good football will undoubtedly be played by these youngsters. A strong side has been chosen to represent Bedfordshire, and Luton has not been overlooked, so that there will be some local interest in the match.

Another very interesting Boxing Tournament has been arranged by the Vauxhall Recreation Club for tonight, starting at 6.30. Some very good names appear in the Bill and those of you who saw the previous effort can be assured of seeing another one this evening equally as good. Tickets can be obtained at the Canteen Door, and the prices are Ringside Seats 10/-, Reserved Seats 6/- and Unreserved at 4/- and 2/- each.

Saturday, March 10th, 1951

BEDS. COUNTY SCHOOLS F.A.

O

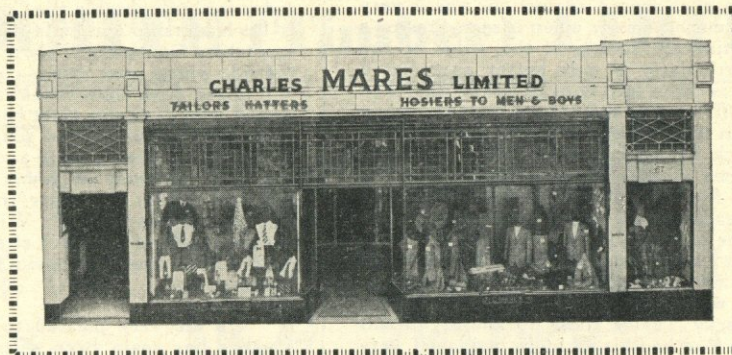
KICK - OFF 11 a.m.

BEDFORDSHIRE BOYS v. BERKS. BUCKS. & OXON BOYS**ADMISSION : Stand and Enclosure 1/6, Boys 1/- :: Ground and Bobbers 1/-, Boys 6d.**

Facing . .
BUTE STREET

Near the . .
TOWN HALL

**MEN'S
WEAR**



The STORE
where
VALUE
reigns
supreme

**BOY'S
WEAR**

CHARLES MARES LTD., 65-67, George Street, LUTON

❖ DAILY DELIVERIES
IN ALL DISTRICTS

**Randall &
Whiting Ltd.**

Wholesale and Retail
MILK
DISTRIBUTORS
Pasteurised and T.T.

HEAD OFFICE:
125, NORTH ST., LUTON
Telephone: Luton 599

DAIRY:
HAVELOCK RD., LUTON
and at 98-100, LUTON ROAD
DUNSTABLE

❖ ❖
Most Up-to-Date Equipment
in the County

'Phone: Proprietor:
LUTON 1961 R. HARRIS

'Rons'
**Gentlemen's
Hairdresser**

**6, MILL STREET
LUTON
BEDS.**

Saloon Service
Ground Floor
Appointments First Floor

LUTON TOWN

Shirts White
Knickers Black
Stockings Black with White Tops

2 **Cooke**
Right Back

4 **Morton**
Right Half

7 **Glover**
Outside Right

8 **Stobbart**
Inside Right

Referee—
Mr. A. H. TOLLEY
(Worcester)

11 **Johnston**
Outside Left

10 **Evans, W.**
Inside Left

6 **Simpson**
Left Half

3 **Deans**
Left Back

NOTTS COUNTY

Shirts Black and White Stripes
Knickers White
Stockings Black and White

Streten
Goal

5 **Owen**
Centre Half

9 **Moore**
Centre



Layton
Centre

5 **Leuty**
Centre Half

Smith
Goal

Football League—Division II

3 **Aherne, T.**
Left Back

6 **McAuley**
Left Half

10 **Davie**
Inside Left

11 **Havenga**
Outside Left

Linesmen—

Red Flag: Mr. J. C. POLLARD
(Thornton Heath, Surrey)

Orange Flag: Mr. P. J. SMYTH
(London)

8 **Sewell**
Inside Right

7 **Broome**
Outside Right

4 **Robinson**
Right Half

2 **Southwell**
Right Back

Kick-Off 3.15 p.m.

SPECTATORS ARE ASKED NOT TO CROSS THE PLAYING FIELD AFTER THE MATCH

**GLAZING CONTRACTORS
LEADED LIGHT MAKERS**

**PLATE
GLASS**
For All Trades

MIRRORS. To any shape or
design.

RE-SILVERING. Old Mirrors
as good as NEW.

Decorative Art in Wallpapers
Quality Paints of All Kinds

**CHARLES BIRD
& SONS, LTD.**

Collingdon Street, Luton
Telephones: 1255-1256

HARRY CANHAM & SON

Export Packers
Export Leatherboard Post Boxes
Cardboard Box, Packing Case
Ply Box & Crate Manufacturers

GROVE ROAD, LUTON

TELEPHONE 458

When you've heard the final whistle

Come and try us for 106 D
Hammer or Plier U
Axe or Chopper N
P Mat or Mop S
h Brush or Broom T
o Enamel or Paint A
n Rope or Twine B
e Lock or Furniture L
Ash Handle or Stale E
3 Incinerator or Bin R
2 Netting or Wire R
9 & Co. (Luton) Ltd. D

RADIO,
AGENTS
for
BUSH
COSSOR
FERRANTI
H. M. V.
PHILIPS
PHILCO
PILOT
ULTRA

YOUR WINNING GOAL
FOR BEST QUALITY
TELEVISION & ALL ELECTRICAL SUPPLIES

A. T. SNOWDEN'S

171, DUNSTABLE ROAD
AND
24, MILL STREET, LUTON
'PHONE: LUTON 1496

RELIABLE
RADIO
TELEVISION
ELECTRICAL
REFRIGERATION
INSTALLATIONS
AND REPAIRS
CARRIED
OUT BY
EXPERTS

**HELEY'S
RESTAURANT**
MILL STREET, Next to Gaumont Cinema
Special **FISH & CHIP
DINNERS & TEAS**

served on match days

PRICE including
TEA, BREAD AND BUTTER **1/9**
Seating Accommodation 90
Telephone: Luton 3730
Proprietor:
A. E. Heley

Usual Reserve Team Prices of Admission

G. A. WILD & SONS

THE
TOWN'S LEADING SPORTS OUTFITTERS
14, MANCHESTER STREET, LUTON

Also at . . .

'Phone No. 780

103, HIGH STREET NORTH, DUNSTABLE

'Phone No. 275

Suppliers to the Luton Town Football Club

CRICKET AND TENNIS
ORDERS WELCOMED

Buy now and save the increased prices



FOOTBALL SECRETARIES
PLEASE NOTE

By the beginning of next season all prices
will have considerably increased

Think ahead and order next season's equipment now

We hold a complete range of all these goods at
the old prices