

# LEEDS UNITED A.F.C.



1950

1951

OFFICIAL PROGRAMME 3d.



BEER AT ITS BEST



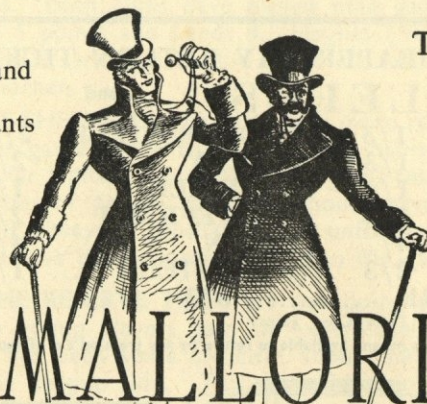
You can always  
rely on

**TETLEY**

Famous for over a Century  
and a Quarter

THE BREWERY, LEEDS 10

Wine  
Spirit and  
Cigar  
Merchants



T. P. MALLORIE  
AND CO. LTD.  
LANDS LANE  
LEEDS 1

Established 1812  
Telephone 24442



**MALLORIE'S**

since the reign of  
King George III

No. 10 SATURDAY, 30th SEPTEMBER, 1950 Price 3d.

**LEEDS UNITED A.F.C. LTD.**

Registered Office and Ground: ELLAND ROAD  
Telephone: 76037-8. Telegrams: "Football, Leeds."

**Directors :**

S. BOLTON, Esq. (Chairman).	Councillor P. A. WOODWARD (Vice-Chairman).
S. L. BLENKINSOP, Esq.	Alderman A. MASSER.
J. H. BROMLEY, Esq.	H. A. MARJASON, Esq.
J. HILTON CROWTHER, Esq.	Manager: Major FRANK C. BUCKLEY.
Secretary: C. A. CROWTHER.	

A SURE "DRAW" AT HOME  
OR AWAY

**MAGNET ALES**

THE QUALITY BEER

**JOHN SMITH'S TADCASTER BREWERY CO. LTD.**  
TADCASTER

Local Office  
71 Vicar Lane, Leeds, 1

Telephone  
32181



## A FEW OF THE CHEAPER DAY RETURN TICKETS

in operation between **LEEDS** and

BATLEY .....	1/3	HUDDERSFIELD	2/2
BRADFORD .....	1/3	ILKLEY .....	2/-
CASTLEFORD ...	1/4	MIRFIELD .....	1/9
DEWSBURY .....	1/3	PONTEFRACT ...	2/-
DONCASTER ...	4/-	RIPON .....	4/-
HARROGATE ...	2/3	WAKEFIELD ...	1/6
YORK .....	3/3		

(Third Class Fares)

Issued any day by any train after 9.30 a.m. and available to return by any train on day of issue only

BRITISH RAILWAYS

## HOME AND AWAY

By "SOCCERATES"



**LUTON TOWN** make a welcome return visit to Elland Road today. Although not one of the fashionable sides, the "Hatters" play some nice football and we have had some very good sporting games with them. Luton's form this season has been of the "in and out" variety. They opened with a win and then from the next six games they only managed to secure one point! Their last two games have resulted in draws, and on Saturday last they looked like spoiling the unbroken certificate of Manchester City (and at Manchester), but fifteen minutes from the end they were debited with a disputed penalty goal. This should be a warning to our boys that they cannot take any liberties with our

# A DOUBLE DIAMOND makes a new man of you

IND COOPE & ALLSOPP BREW IT AT BURTON

visitors. Both clubs have played nine games, from which Luton have gained 5 points and Leeds 8. Hughes (Wales) and Aherene (Ireland) are both internationals, and other stars in the Luton side are Stobbart and Kiernan.

**AT SHEFFIELD.** The game was more rugged than scientific, and this type of game seems to be coming a habit in our "derby" games with the other United. A draw was a good result, although there are quite a number of people think we should have won. A point away from home is always a good one, and unfortunately these days it seems to me that the points mean more than the game—it's a pity, but it's true.

**THE RESERVE TEAM** are not doing too well at the moment, but as the young players gain in experience so will the results improve. There has been some criticism about the playing of youngsters in the Central League side. This is entirely in the hands of our manager, Major Buckley, and it is NOT the policy of our directors to interfere in any way with our manager and his judgment regarding the ability of the players. I don't remember any suggestions about John Charles being too young to take his place in the First Team, and the man he had to face in his first game was Houlston of Queen of the South, the week following this Scottish centre forward's triumph in the International match at Wembley. Football is a young man's game, and you can take it from me that a careful watch is kept of the physical condition of all our players.

**REFEREES ARE HUMAN** and therefore make mistakes. I saw a game last week when a bad mistake by the referee may have caused the loss of two valuable points. I don't think for one moment the referee was biased, and he was certainly not a "homer," as the offence was to the disadvantage of the home side. I understand that a certain amount of bad feeling towards Mr. Robinson, of Burnley, crept into the game with Sheffield United Reserves here on Saturday. I know exactly how you feel and it may be difficult to keep one's temper and refrain from passing uncomplimentary remarks about the officials, but **IT DOES NOT HELP YOUR SIDE**, and the barracking of officials often causes them to make mistakes they might not otherwise have made. Lastly and very importantly, it brings nothing but disrepute to your club. I feel sure the unthinking offenders will remember this whenever the temptation to express themselves arises—Thank You!

**THE JUNIOR TEAM** still remains undefeated, and they registered another win last Saturday when they beat Huddersfield Town 2-1.

**WHY CAN'T WE HAVE A BAND?** This is a question which I have been asked a number of times recently. There are a number of reasons why we don't have one—it is a difficult and expensive job to bring a **FIRST CLASS BAND** to all our matches, and there is no object in having a band unless it is first-class. The weather is very often unfit for a band to stand on a muddy ground and to play in the open, and we have no room for them under cover. When the times of kick-off



# SPORTING RECORD

The Family All-Sports  
Weekly  
3d.

- The Best Soccer News & Forecasts
- Supporters' News  
—a regular feature by  
RAY MARLER

Right

LEEDS UNITED

(Blue and Old Gold)

Searson

<sup>2</sup> Dunn

<sup>4</sup> Kerfoot

<sup>8</sup> Iggleden

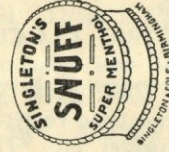
<sup>7</sup> Williams

Referee :  
Mr. F. W. CHADWICK  
Leicester

<sup>3</sup> Milburn

<sup>5</sup> Charles

<sup>9</sup> Browning



Linesmen :  
Mr. F. BEACOCK  
Yellow  
Mr. F. C. DORLING  
Red

<sup>11</sup> Glover

<sup>10</sup> Taylor, J.

<sup>6</sup> Shanks

<sup>3</sup> Aherne, T.

Hughes

LUTON TOWN

Left

Left

<sup>11</sup> Hughes

<sup>10</sup> Dudley

<sup>7</sup> Stobbart

<sup>8</sup> Kiernan

<sup>4</sup> Watkins

<sup>2</sup> Cooke

Right



*If you want your 'OUTSIDE RIGHT'*

SEE

**EDMUND JACKSON (LEEDS) LTD.**

9 MARKET BUILDINGS, LEEDS

For

HATS, CAPS, RAINCOATS. OVERCOATS, BOOTS, SHOES

Large Range in all Departments—Best Value

are early it is very difficult for bandsmen to arrive in time and properly dressed. Can you imagine anything worse than half the bandsmen in uniform while the remainder are attired in an assortment of raincoats or overcoats and crowned by cloth caps or bowler hats. The range of programmes we can provide on our "Tannoy" sound system is much more varied than those provided by a band, and we make a point of providing the latest music of ALL types.

**CAN WE HAVE AN ELECTRIC CLOCK ON THE GROUND?** Is another popular question at this moment. I am afraid the main objection to a clock is the controversy which arises from the time shown on such a clock and the time registered on the referee's special watch, which allows for stoppages, etc. The frequent cuts in electrical power is also a very important matter to be taken into consideration.

**DAVID COCHRANE** has been with us thirteen years and there is perfect understanding between him and Directors and Manager. David has purchased a business in Leeds and he has been given an extension of leave in connection with this matter.



**MELBOURNE  
ALES**

**HAVE NO MATCH THIS WEEK**

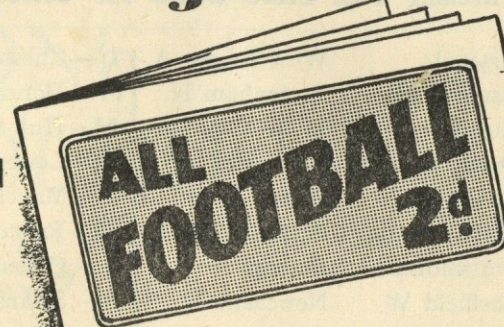
**ANONYMOUS LETTER WRITERS** please note! This is an ungentlemanly and priggish way to express your views, and I am afraid such letters immediately find their proper place—the WASTE PAPER BASKET!! Should anyone wish to criticise or offer any helpful suggestions and SIGN THEIR NAME, I am sure everything will be done to acknowledge them through these notes.

**BLACKPOOL (Central League Champions) v THE REST.** This match takes place at Bloomfield Road, Blackpool, today.

**PROFESSIONAL SOCCER PLAYERS' GOLF CHAMPIONSHIP** takes place on Monday, 2nd October, at Childwall Golf Club, Gateacre, near Liverpool. Four of our players are taking part:—H. V. Searson, J. Milburn, H. Williams, L. Browning. Alderman S. R. Williams, of Liverpool A.F.C., who has been one of the prime movers in organising this tournament, tells me there are 170 entries. Next year it is suggested the competition shall be run in four geographical sections, and so many leading scorers from each section will take part in the final. This is a fine idea and should help to cement many football friendships between players, directors and officials. There is also a competition for directors of clubs.

*Here it is again!*

**The best  
twopennyworth  
on the bookstall  
for all the  
soccer fans!**



**WEEKLY COMMENTARY:** By George Allison, ex-Arsenal manager

**PRIVATE LIVES:** "Off Parade" stories of Football's personalities

**MY JOB:** Weekly articles by famous soccer stars

**AUTOGRAPH GALLERY:** Weekly signed pictures of the stars

**STARS OF TO-MORROW:** All about the boys, many still in the background, waiting their big chance

**CARTOONS, PICTURES** and a host of other exclusive features

**FROM YOUR  
NEWSAGENT OR  
BOOKSTALL**

**EVERY WEDNESDAY**



**PRESTON — Saturday, 14th October — BLACKPOOL**

Why not join the Leeds United Supporters' Club on their Annual Outing? See the game at Preston and then on to Blackpool. Five saloon trains have been arranged for all areas at reduced fares. Leaving Kippax and calling at Garforth, Cross Gates and Leeds, Aireboro district train stops at Newlay, Horsforth and Guiseley. All applications for these outer areas to the following:—

AIREBORO.—Mr. Horton, 11 Well Terrace, Guiseley.

KIPPAX.—Mr. Cox, 32 West View, Robinson Lane.

GARFORTH.—Mr. Bramley, Church Lane.

CROSS GATES.—Station Hotel.

SOUTH MILFORD.—Mr. Garbutt, 19 Sunningdale Estate, Micklefield.

ARDSLEY.—Mr. Hull, 40 Mary Street.

PONTEFRACT.—Mr. Simpson, 20 Harewood Avenue.

**SUPPORTERS VISIT ILLUMINATIONS**

*At Elland Road, Saturday, October 7th*

## BURY

English League

Kick-off 3 p.m.

### Evening Post Score Board for Correct Half-Time Scores

<b>A</b> —Arsenal	West Brom. A.	<b>L</b> —Chesterfield	Birmingham C.
<b>B</b> —Aston Villa	Tottenham H.	<b>M</b> —Doncaster Rov.	Blackburn R.
<b>C</b> —Burnley	Stoke City	<b>N</b> —Hull City	Southampton
<b>D</b> —Derby County	Blackpool	<b>O</b> —Leicester City	Cardiff City
<b>E</b> —Liverpool	Bolton Wand.	<b>P</b> —Manchester City	Coventry City
<b>F</b> —Middlesbrough	Huddersfield T.	<b>Q</b> —Preston N. E.	Brentford
<b>G</b> —Portsmouth	Fulham	<b>R</b> —Queen's Park R.	Grimsby Town
<b>H</b> —Sheffield W.	Newcastle U.	<b>S</b> —Swansea Town	Barnsley
<b>I</b> —Sunderland	Charlton Ath.	<b>T</b> —West Ham U.	Sheffield United
<b>J</b> —Wolves	Man. United	<b>U</b> —Bradford	Bradford City
<b>K</b> —Bury	Notts County		

**RECORDS PLAYED HERE ON SALE AT HARTLEYS,  
VICAR LANE**

TAKE  
SOME  
BEATING

Ramsden's  
STONE  
TROUGH  
ALES



# DUNLOP & RANKEN LTD

STEELWORK, WIREWORK, SHEETWORK,  
ODDWORK, HAND FORGED TOOLS, CHAINS,  
WIRE ROPES, FORGINGS, CASTINGS, PRESSINGS,  
RIVETTED & WELDED CONSTRUCTIONS.

## FOR EVERYTHING

PERFORATED PLATES, STORAGE RACKS,  
DRYING OVENS & CARS, FURNACE DOORS,  
TANKS, BOGIES & TROLLEYS,

## IN STEEL

STEEL FLOORING,  
STEEL FIREPROOF DOORS,  
LOADING STAGES, STEEL STAIRWAYS.

Telephone 27301 (20 LINES) Head Office 147 THE HEADROW LEEDS