



THE
LUTON TOWN FOOTBALL
AND ATHLETIC CO
LTD.

OFFICIAL
JOURNAL

PRICE
TWO PENCE



FOOTBALL LEAGUE—DIVISION II

SATURDAY, 18th MARCH, 1950

LUTON TOWN v. CARDIFF CITY

“TRUE-FORM”

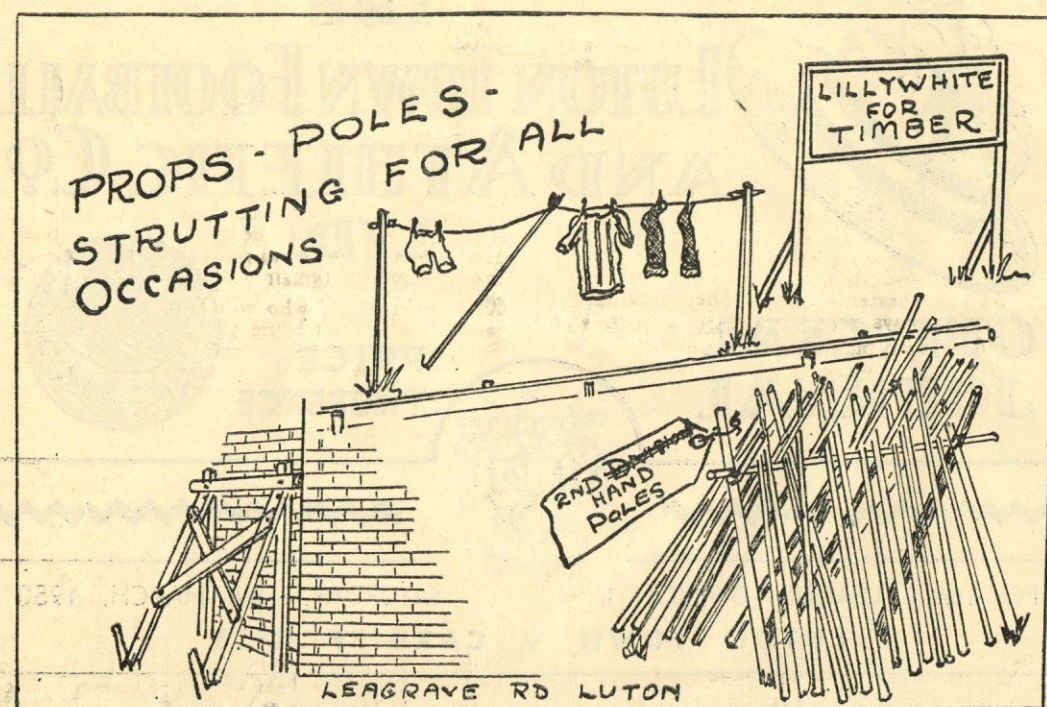
The Town's Leading Shoe Store

32, GEORGE STREET

FOR SHOES OF

QUALITY ★ CHARACTER ★ RELIABILITY





LUTON BOBBERS STAND CLUB *Telephone 2566*

The winning number of the Penny-on-the-Ball Ticket will be announced over the loud speakers at the interval. The person holding the winning ticket can go to the rear of the

Main Stand after the game and for 3d. purchase the ball from Mr. J. Collier.

The ticket number for the ball on Saturday, March 4th, 1950, was **65782**.

To all
Members of the Bobbers Stand Club

PLEASE NOTE it is now time

for you to

RENEW YOUR MEMBERSHIP

SO PLEASE SEND YOUR **1/2** ALONG TO

The Secretary, Bobbers Stand Club, Beech Hill Path, Luton

CLUB NOTES

WE welcome with pleasure another visit to "Hatopolis" by Cardiff City, often referred to as the "Bluebirds." They appear just below the half-way line in the Table but as they have one or two games in hand of a few clubs above them their position may come out even better when they have played the same number of matches. Their home record is a very good one, only Tottenham having won more games at home, but their away record is a poor one and is in fact slightly worse than our own. Their two away successes, both by the only goal scored (as curiously enough were our two away wins), were at Chesterfield and at Shepherds Bush. Cardiff have always been an attractive team to watch and with so many Welshmen now living in and around Luton we anticipate a much bigger crowd today than has been the case lately, particularly as our lads are now showing much improved form.

A party of Cardiff City supporters from Caerphilly ordered fifty Stand Tickets weeks ago for today's match, but on Thursday morning last we received back forty of these tickets "with profound regret owing to one of the organisers and several of the intended party having lost their lives in the recent air crash." We, of course, accepted the return of these tickets under the circumstances and our regret is that these were such that there was no alternative but to return them. We sincerely hope that the rest of the party who have made the trip today will be able to forget that tragedy if only for a few hours.

What a fine game our lads played at White Hart Lane, last Saturday. There was certainly no inferiority complex on our side, despite the Hotspurs' marvellous record this season, particularly at home. That we did not return with both points in the bag was due to a magnificent save by Ditchburn from a shot by George Stobbart when everybody in the ground, except perhaps Ditchburn himself, thought the ball was on its way to the back of the net. It was undoubtedly the save of the season and, of course, it had to be against us. But our lads were "the tops" and so well did the defence play that a goal from the Tottenham forwards always seemed very remote. Our supporters who made the trip must have felt very proud of their team when the final whistle was blown. Well done, lads, and may you all continue the good work.

Next Saturday, March 25th, both the First and Reserve Teams are playing away from home, the Seniors at Blackburn and the Stiffs at Northampton.

We are therefore giving our Third Team their first chance of appearing this season at Kenilworth Road, when they will entertain Hitchin Road Old Boys, in a South Midlands League fixture. We hope quite a few of you will come along and see our youngsters in action and give them your encouragement. In the morning of the same day the Luton Schoolboys will be hosts to Reading Schoolboys in an annual match for the Seaward Trophy. Since its inception in 1948 the Luton Boys have been beaten on each occasion, last year by West Ham Schoolboys and the first year by Leicester Schoolboys. It is hoped that at the third attempt the Trophy will remain in Luton and we hope to see a good crowd who will have the pleasure of seeing the Trophy being presented to the Luton Boys' captain, after the match. Whatever the result we know we shall see, as is usual on these occasions, a very sporting game and what it may lack in finesse will be made up in good honest endeavour. Kick-off at 11 o'clock.

Despite much hard work these last few weeks we were not able, apart from the signing of Jimmy Jinks, to add to our playing staff before the closing date of March 16th, but we were persuaded to part with Peter Small. Peter has been with us since he was demobbed from the Army, in August 1947, and we are sorry to lose him for he is a very enthusiastic player and has scored some very good goals for Luton, both for the First Team and the Reserves. Since Alex Glover and George Stobbart came, however, he has not been able to command a place in the First Team and as he felt he might do better given the chance of playing for another club we agreed to let him go. We wish him luck in his new surroundings and trust he will soon settle down.

We should like to point out that the kick-off in our next Division II home game with Sheffield Wednesday, on April 1st, has been arranged for 3 o'clock to enable our opponents to catch the earlier train home, otherwise they would not get back to Sheffield until very late. Also on Good Friday we have arranged the kick-off for our match with Barnsley to be at 11 a.m., to enable our lads to get off early in the afternoon for their game at Plymouth, on Easter Saturday. As it is the party will not arrive at Plymouth until midnight on Good Friday, and then on Easter Sunday they will make the tedious journey from Plymouth to Sheffield, which will take all day. So what with three games in four days and all this travelling on top of it this Easter time is going to be a very busy one for our lads. However, it's all in the game and is accepted as such.

Saturday, March 25th, 1950

KICK - OFF 11 a.m.

SEAWARD TROPHY

LUTON SCHOOLBOYS v. READING SCHOOLBOYS

ADMISSION — Stand and Enclosure, Adults 1/6, Boys 1/-
Bobbers and Terraces, Adults 1/-, Boys 6d.

KICK - OFF 3.15 p.m.

SOUTH MIDLANDS LEAGUE—Premier Division

LUTON TOWN "A" v. HITCHIN ROAD OLD BOYS

Usual Reserve Team Prices of Admission

For SUITS, OVERCOATS, RAINCOATS and UNDERWEAR
OF QUALITY

YOU SHOULD VISIT

**MEN'S
WEAR**

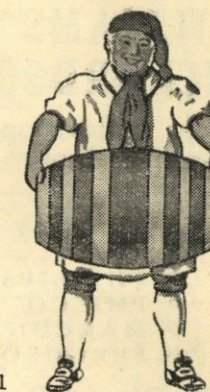
MARES

**BOY'S
WEAR**

CHARLES MARES LTD., 65-67, George Street, LUTON



J.W. GREEN'S
Quality
Ales and Stouts



J. W. GREEN LTD., The Brewery, Luton Telephone: Luton 3131

DAILY DELIVERIES
IN ALL DISTRICTS

**RANDALL &
WHITING LTD.**

WHOLESALE
AND RETAIL
MILK
DISTRIBUTORS

Pasteurised and T.T.

HEAD OFFICE:
125, NORTH ST., LUTON
Telephone: Luton 599

DAIRY:
HAVELOCK RD., LUTON

*Most Up-to-Date Equipment
in the County*

We cordially invite our Customers
to come and see our methods

'Phone: Proprietor:
LUTON 1961 R. HARRIS

'Rons'
**Gentlemen's
Hairdresser**

**6, MILL STREET
LUTON
BEDS.**

Saloon Service
Ground Floor

Appointments First Floor

LUTON TOWN

Shirts White
Knickers Black
Stockings Black with White Tops

2 Cooke
Right Back
4 Watkins
Right Half
7 Glover
Outside Right
8 Kiernan
Inside Right

Referee —
Mr. R. J. BURGESS
(Reading)

11 Edwards
Outside Left
10 Blair
Inside Left

6 Hollyman
Left Half
3 Sherwood
Left Back

CARDIFF CITY

Shirts Royal Blue and White
Knickers White
Stockings Blue and White

Hughes
Goal

5 Owen
Centre Half

9 Jinks
Centre



9 Evans
Centre

5 Montgomery
Centre Half

Joslin
Goal

Football League—Division II

3 Aherne, T.
Left Back

6 Shanks
Left Half

10 Stobbart
Inside Left

11 Wyldes
Outside Left

Linesmen—
Blue Flag: Mr. E. P. L. GREIG
(London)
Red Flag: Mr. C. G. GAYLOR
(Harrow)

8 McLaren
Inside Right

7 Grant
Outside Right

4 Baker
Right Half
2 Stittfall
Right Back

Kick - Off 3.15 p.m.

SPECTATORS ARE ASKED NOT TO CROSS THE PLAYING FIELD AFTER THE MATCH

GLAZING CONTRACTORS
LEADED LIGHT MAKERS

**PLATE
GLASS**
For All Trades

MIRRORS. To any shape or
design.

RE-SILVERING. Old Mirrors
as good as NEW.

Decorative Art in Wallpapers
Quality Paints of All Kinds

**CHARLES BIRD
& SONS, LTD.**

Collingdon Street, Luton

Telephones: 1255-1256

HARRY CANHAM & SON

Export Packers
Export Leatherboard Post Boxes
Cardboard Box, Packing Case
Ply Box & Crate Manufacturers

GROVE ROAD, LUTON

TELEPHONE 458

**W. CHAMBERLAIN
& Co.**

Telephone: LUTON 329
106, DUNSTABLE ROAD, LUTON

IRONMONGERY &
GARDEN REQUISITES
BRUSHES & BROOMS
for Home and Factory
PAINTS & DISTEMPERS
OILS, WALLPAPER Etc.
as available

YOUR KIND ENQUIRIES INVITED

YOUR WINNING GOAL

FOR BEST QUALITY

RADIO, TELEVISION & ALL ELECTRICAL SUPPLIES

IS

A. T. SNOWDEN'S

171, DUNSTABLE ROAD
AND

24, MILL STREET, LUTON

'PHONE: LUTON 1496

AGENTS
for
BUSH
COSSOR
FERRANTI
H. M. V.
PHILIPS
PHILCO
PILOT
ULTRA

RELIABLE
RADIO
TELEVISION
ELECTRICAL
REFRIGERATION
INSTALLATIONS
AND REPAIRS
CARRIED
OUT BY
EXPERTS

**HEILEY'S
RESTAURANT**
MILL STREET, Next to the Palace Cinema
**Special FISH & CHIP
DINNERS & TEAS**

served on match days

PRICE including
TEA, BREAD AND BUTTER **1/9**

Seating Accommodation
90

Proprietor:
A. E. Heley

WILLIAMS & RICHARDSON

Radio, Television & Electrical Engineers

Agents for—

- ❖ MURPHY
- ❖ H.M.V.
- ❖ PHILLIPS
- ❖ PHILCO
- ❖ MARCONI
- ❖ FERGUSON

174, Biscot Road
& 17, DURHAM ROAD
LUTON

Phone: 593 and 2012

TODAY'S HALF-TIME SCORES

NOTE. The letter in the Programme corresponds with the letter on the Board—thus A 0-1 means that the first-named club has scored 0 and their opponents 1.

FIRST LIST

F.A. CUP—Semi-Final

A CHELSEA	ARSENAL
LEAGUE GAMES			
B BIRMINGHAM	MANCH. CITY
C BOLTON WAN	CHARLTON A.
D DERBY CO'NTY	FULHAM
E STOKE CITY	EVERTON
F SUNDERLAND	PORTSMOUTH
G WEST BROM.	NEWCASTLE U.
H LIVERPOOL	WOLVES
K BURNLEY	HUDDERSFIELD
L MANCH. UN.	BLACKPOOL
M SWANSEA T.	WEDNESDAY
N WEST HAM U.	BURY

Park
Square

For

Quality Hardware
Paints and
Decorators' Sundries
Crockery and
Kitchen Needs

A. J.
WILSHER

64 LANGLEY STREET

'PHONE LUTON 3924

(2 mins. Park Square)

OPEN SATURDAYS

PERSONAL

ATTENTION

HERE →

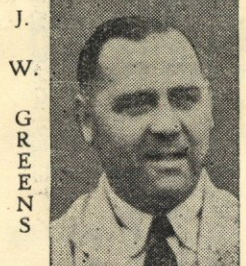
Wilsher's
Store

Cumberland Street

Warden Tavern

2½ miles out of Luton
on main Bedford Road

Proprietor: **Tom Hodgson**
Ex-Captain, Luton Town F.C.

P
R
I
Z
E

B
E
E
R
S

Luncheons
Wedding Receptions : Social
Functions : Evening Parties
Fully Licensed Large Car Park

Do you
view
your
printing
with
complete satisfaction?

IF NOT, TRY

E. A.

ALLEN

& SON (Luton) LTD.

Printers of Quality

424, DUNSTABLE ROAD

'Phone LUTON 1626

SECOND LIST

A QUEEN'S P.R.	CHESTERFIELD
B SHEFFIELD UN.	LEICESTER C.
C SOUTHAMPTON	BRENTFORD
D BARNLEY	TOTTENHAM
E COVENTRY C.	BLACKBURN R.
F GRIMSBY T.	BRADFORD
G LEEDS UNITED	HULL CITY
H PRESTON N.E.	PLYMOUTH AR.
K ALDERSHOT T.	CRYSTAL PAL.
L BRIGHTON & H.	PORT VALE
M BRISTOL CITY	IPSWICH T.
N NORWICH C.	LEYTON O.

Motorists!

Fit

**TRIPLEX
SAFETY
GLASS**

Consult

**OGDEN &
CLEAVER LTD.**

(GLASS DEPT.)

Stuart Street, Luton

'PHONE 746-7

THIRD LIST

A NOTTS. FOR.	WATFORD
B SWINDON T.	BRISTOL ROV.
C MILLWALL A.	SOUTHEND U.
D NEWPORT CO'	EXETER CITY
E NORTHANTS	READING
F TORQUAY U.	BOURNEM'UTH
G WALSALL	NOTTS. CO'TY
H BRADF'D CITY	CREWE ALEX.
K CHESTER	TRANMERE R.
L DONCASTER R.	WREXHAM
M N. BRIGHTON	ROTHERHAM
N ROCHDALE	BARROW

**BEDFORDSHIRE
Building Society**

2¼% p.a.

Income Tax Paid

INVESTMENTS

ACCEPTED

6d. - £5,000

❖

16, King Street
LUTON

Branch Manager
C. L. ROBSON

Telephone
4577

FIXTURES, 1949-50**FIRST XI Division II**

F. A.

			1948/49		
Sat., Aug. 20	West Ham United	...	0 1	H	2 2
Wed., " 24	Coventry City	...	2 0	H	2 0
Sat., " 27	Sheffield United	A	2 2
Mon., " 29	Coventry City	...	0 2	A	0 1
Sat., Sept. 3	Grimsby Town	...	1 1	H	0 0
Wed., " 7	Bradford	...	1 4	A	0 1
Sat., " 10	Queens Park Rangers	...	3 0	A	0 3
" " 17	Preston North End	H	1 1
" " 24	Swansea Town	A	0 0
Sat., Oct. 1	Leeds United	...	0 0	H	1 0
" " 8	Leicester City	...	1 1	H	1 0
" " 15	Bury	...	1 3	A	2 5
" " 22	Tottenham Hotspur	...	1 1	H	1 1
" " 29	Cardiff City	...	3 3	A	0 0
Sat., Nov. 5	Blackburn Rovers	...	2 0	H	5 2
" " 12	Brentford	...	0 2	A	0 1
" " 19	Hull City	H	0 3
" " 26	Sheffield Wednesday	...	0 0	A	1 1
Sat., Dec. 3	Plymouth Argyle	...	3 1	H	1 1
" " 10	Chesterfield	...	0 1	A	1 0
" " 17	West Ham United	...	1 0	A	0 0
" " 24	Sheffield United	H	1 3
Mon., " 26	Southampton	...	1 1	H	1 1
Tues., " 27	Southampton	...	1 1	A	1 2
Sat., " 31	Grimsby Town	...	1 2	A	1 6
Sat., Jan. 7	Grimsby T. (F.A. Cup-3)		3 4
" " 14	Queens Park Rangers	...	0 0	H	1 2
" " 21	Preston North End	A	1 0
" " 28	F.A. Cup—Round 4		
Sat., Feb. 4	Swansea Town	H	1 2
" " 11	F.A. Cup—Round 5		
" " 18	Leeds United	...	0 2	A	1 2
" " 25	Leicester City	...	1 1	A	2 3
Sat., Mar. 4	Bury	...	1 0	H	2 1
" " 11	Tottenham Hotspur	...	1 2	A	0 0
" " 18	Cardiff City	...	3 0	H	
" " 25	Blackburn Rovers	...	1 4	A	
Sat., Apr. 1	Sheffield Wednesday	...	2 1	H	
Fri., " 7	Barnsley	...	1 0	H	
Sat., " 8	Plymouth Argyle	...	1 1	A	
Mon., " 10	Barnsley	...	2 1	A	
Sat., " 15	Brentford	...	2 1	H	
" " 22	Hull City	A	
" " 29	Chesterfield	...	1 0	H	
Sat., May 6	Bradford	...	0 1	H	

RESERVE FIXTURES Football Combination

F. A.

			1948/49		
Sat., Aug. 20	Reading	...	3 0	A	0 0
Mon., " 22	Millwall	A	1 3
Sat., " 27	Southend United	H	0 0
Wed., " 31	Coventry City	H	4 1
Sat., Sept. 3	Northampton Town	...	3 2	A	3 3
Wed., " 7	Queens Park Rangers	...	5 2	H	1 0
Sat., " 10	Northampton Town	...	5 2	H	1 0
Wed., " 14	Birmingham City	...	2 0	H	0 2
Sat., " 17	Swansea Town	...	0 3	A	1 1
Wed., " 21	Birmingham City	...	3 1	A	2 4
Sat., " 24	Arsenal	H	2 0
Mon., " 26	Coventry City	A	1 1
Sat., Oct. 1	Queens Park Rangers	...	2 1	A	3 2
" " 8	Southend United	A	1 0
" " 15	Fulham	H	3 1
" " 22	Crystal Palace	A	0 1
" " 29	Cardiff City	H	0 0
Sat., Nov. 5	Bristol Rovers	A	0 0
" " 12	Leyton Orient	...	5 0	H	2 1
" " 19	Leicester City	A	0 3
" " 26	Bristol Rovers	...	9 0	H	4 5
Sat., Dec. 3	Leyton Orient	...	3 2	A	2 3
" " 10	Leicester City	H	0 3
" " 17	Reading	...	3 2	H	4 1
Mon., " 26	Arsenal	A	4 0
Tues., " 27	Swansea Town	...	1 1	H	2 2
Mon., Apr. 10	Millwall	H	
Sat., " 15	Fulham	A	
" " 22	Crystal Palace	H	
" " 29	Cardiff City	A	
Combination Cup					
Sat., Dec. 31	Northampton Town	...	2 1	H	0 3
Sat., Jan. 7	Birmingham City	...	3 2	A	2 5
" " 14	Norwich City	...	2 3	A	1 3
" " 21	Watford	...	2 0	H	5 0
" " 28		...			
Sat., Feb. 4	Leicester City	...	0 0	A	1 1
" " 11	Birmingham City	...	3 0	H	3 2
" " 18	Norwich City	...	3 1	H	2 4
" " 25	Ipswich Town	...	2 2	H	0 0
Thur., Mar. 2	Coventry City	...	2 2	A	1 5
Sat., " 11	Leicester City	...	1 1	H	0 2
" " 18		...			
" " 25	Northampton Town	...	2 1	A	
Sat., Apr. 1	Watford	...	1 0	A	
Fri., " 7	Ipswich Town	...	0 0	A	
Sat., " 8	Coventry City	...	1 0	H	

LEAGUE TABLES, 1949-50**LEAGUE DIVISION II**

	Pld.	Won	Drn.	Lost	For	Agst.	P.
Tottenham Hotspur	32	24	5	3	70	24	53
Sheffield United	34	14	13	7	48	42	41
Hull City	32	16	6	10	57	55	38
Sheffield Wednesday	31	13	11	7	50	41	37
Southampton	32	13	11	8	48	58	37
Leeds United	32	13	10	9	39	31	36
Bury	32	14	6	12	54	41	34
Preston North End	33	13	8	12	43	39	34
Swansea Town	32	13	6	13	45	42	32
Leicester City	34	10	12	12	46	53	32
West Ham United	31	11	9	11	39	38	31
CARDIFF CITY	31	13	5	13	30	36	31
Brentford	33	10	11	12	31	40	31
Barnsley	32	10	10	12	53	52	30
Grimsby Town	31	11	7	13	57	58	29
Blackburn Rovers	32	11	7	14	41	44	29
Chesterfield	32	11	7	14	31	37	29
Queens Park Rangers	33	8	10	15	32	45	26
LUTON TOWN	32	7	12	13	32	46	26
Coventry City	32	7	10	15	37	48	24
Bradford	32	8	8	16	45	61	24
Plymouth Argyle	33	6	12	15	38	55	24

COMBINATION CUP—Section III

	Pld.	Won	Drn.	Lost	For	Agst.	P.
Norwich City	10	6	2	2	18	10	14
Leicester City	9	5	3	1	18	9	13
Birmingham City	11	4	3	4	18	15	11
Ipswich Town	9	3	5	1	10	9	11
Coventry City	10	3	3	4	17	11	9
Northampton Town	10	3	1	6	14	17	7
Watford	9	3	1	5	10	23	7
LUTON TOWN	10	2	2	6	15	26	6

NEXT MATCH

Saturday, 1st April, 1950

FOOTBALL LEAGUE—DIVISION II

LUTON TOWN
v
SHEFFIELD WED.

Kick-Off 3 p.m.

PRICES OF ADMISSION:—

Centre Stand 5/-

Stand and Enclosure 3/6, Boys 2/-

Ground (under cover) 2/-

Ground (Kenilworth Road) 1/3

Boys 1/-

All Prices include Entertainment Tax

G. A. WILD & SONS

THE
TOWN'S LEADING SPORTS OUTFITTERS

Fancy Leather Goods Dealers and Saddlers

14, MANCHESTER STREET, LUTON

Also at

'Phone No. 780

103, HIGH STREET NORTH, DUNSTABLE

'Phone No. 275

Suppliers to the Luton Town Football Club

Agents for all the Leading Sports Goods Manufacturers

Buy your Tennis and Cricket Requisites early ! !

Our Latest Price List of Summer Sports Equipment available
on application :: :: :: We welcome Club enquiries

Full range of all ATHLETIC EQUIPMENT in stock
RUNNING, CROSS COUNTRY and CYCLING SHOES in all sizes

ATHLETIC SHORTS AND VESTS (Round Neck and $\frac{1}{2}$ Sleeves)
TRACK SUITS in all sizes now available

Agents for "B.S.A.," "WEBLEY," "DIANA" Air Rifles and Ancillary Equipment

❖ Slazengers Archery Equipment in stock

Tennis Rackets repaired and restrung on the premises at short notice by Specialists

BRISTLE AND PLASTICINE DART BOARDS

NOW AVAILABLE

Large Ranges of Darts to suit every Player—"BEDFORDIAN" DARTS
and FLIGHTS in Stock, also JIM PIKE and LEO NEWSTEAD Etc.

Ask to see our Super White Flights

❖ TABLE TENNIS TABLES in Stock

Also Johnny Leach, Victor Barna, Jack Carrington
TABLE TENNIS BATS and BALLS

❖ ROLLER SKATES in great variety

INDOOR GAMES a speciality
MONOPOLY, TOTOPOLY, PIT, Etc.

❖ BILLIARD TABLES recovered and repaired at short notice by our experienced men at reasonable prices

Travel and Fancy Leather Goods of every description
THE FINEST RANGE IN THE COUNTY