

# BURY FOOTBALL

OFFICIAL  
PROGRAMME

2<sup>D</sup>

CLUB CO. LTD.



# Bury District Co-op. Society, Ltd.

**CAFE** Market Street Tel. No. BURY 1310

AFTER THE MATCH VISIT OUR CAFE  
FOR THE BEST MEAL IN TOWN

Satisfaction, Quick Service, and  
First Class Quality at Reasonable Prices

## CARRIAGE AND MOTOR DEPARTMENT

SILVER STREET

If you require a **TAXI** to or from the Football Match,  
or for any other journey, please 'phone

**BURY 77**

or order at any of the Society's Branches

**PROMPT ATTENTION TO ALL CALLS**

Our **WOLSELEY CARS** for Weddings, etc.,  
are the most up-to-date in the District

Also *Limousine Cars for Local or Journey Work at competitive prices*

**Bury District Co-operative Society, Ltd.**

# BURY FOOTBALL CLUB Co. LTD.

GIGG LANE, BURY.

## BOARD OF DIRECTORS:

Messrs. G. B. HORRIDGE (Chairman), J. PRESTWICH (Vice-Chairman),  
C. DEAN, H. DUCKWORTH, H. UNSWORTH, C. CLARKE, A. LAWSON.

Secretary-Manager: NORMAN BULLOCK.

Ground and Registered Office: GIGG LANE, BURY.

TEL. 1067.

Colours:—White Shirts with Navy Blue Collars and Navy Knickers.

No. 25. Vol. 17.

JAN. 18th, 1947.

v. LUTON TOWN.

## CLUB GOSSIP

So we have made an early exit from the national Cup competition. Before referring to last week's game at the Dell, let us pay Southampton a compliment of being good winners—though a 5—1 score flattered them—and wishing them a good run in the event. They have certainly a hard game in prospect at St. James's Park in the next round.

In football, as in other games, books could be written on what might have happened had other circumstances prevailed, but in mentioning the handicap under which the team had to meet the robust Saints—the absence of such stalwarts as Jones, Mutch, and Reid—it is not desired to offer any excuses. We were definitely unlucky to be without the assistance of our captain, who damaged a leg when training at Bournemouth. The injury "just happened" as he was sprinting around the track, and though desperate efforts were made to get him fit they were unavailing. Then Mutch could not play, while earlier it was apparent that Reid, splendidly though the knee injury had responded to treatment, would not be able to resume on the left wing.

It is when such handicaps are experienced that the resources of the club are tested, and it has to be admitted that we are not as strongly staffed as we would like to be. Other clubs, of

course, are in the same position, but they were fortunate enough to avoid injuries to their seniors. Though Southampton were good winners, had misfortune not attended some of the work of our defence in the opening quarter of an hour, when we fell three goals behind, the issue would have been much more closely fought. Indeed had there been infused only a little more finishing power in attack Southampton would have had to fight much harder in the second half. Several of our players enhanced their reputations, but none did better than Halton, who scored a penalty goal. Next season he is to assist the Hampshire Cricket Club in the county competition. He could not have given a better illustration of his all-round efficiency.

Now we are out of the Cup competition we can get back to the more important task of assuring our position in the Second Division. Our placing has greatly improved of late by our victories at Christmas and the New Year, but we are not yet out of the wood. Some stiff games face the team in the coming weeks, and by the end of next month it should be possible to get a much clearer picture of what is likely to happen. In the meantime it is to be hoped the team begins to do a



The Only Address in the world  
where the

**Original Bury Puddings**

are made in

**Casewell's**

**60 UNION ST.**

: : BURY : :



Established over 120 years



None genuine without our  
label

We give prompt attention to  
all Post Orders



THE PUDDINGS THAT HAVE  
MADE BURY FAMOUS

WEDNESDAY'S

**"Bury Times"**

CONTAINS FULL REPORTS  
AND COMMENTS ON  
ALL BURY FOOTBALL  
CLUB MATCHES



Also Special Reports and  
Pictures of all other local  
Sporting Events . . and  
General News

## CLUB GOSSIP—continued

little better in its away games. Given the same determination, the same aggressive spirit that has marked the play of the side at Gigg Lane, then the second away success would surely soon be recorded. Points won away from home are of great value, and there seems the chance of a better yield in the next few weeks.

It is pleasing to be able to report the much-improved showing of the second eleven in their game with Manchester

City Reserves. They well deserved their 2—1 success. Particularly pleasing was the promise in the performance of Hardman (centre-half) and Jarman (inside left). Other members of the team also made an adequate contribution. Their time is not yet, but if they continue to progress there must be a chance for them in the senior side in the not distant future. Team-building is a long term policy, and not always is there a speedy return for the efforts and time spent in finding the right type of young material.

**AUTYS'**  
**TOURS**  
LTD

MOTOR ENGINEERS

—:—

Motor Coach Tour  
Specialists

—:—

**Private Licensed Cars**

For Hire Anytime, Anywhere

—:—

Let us solve your OUTING problems  
Call, Write or Phone

—:—

MILLETT ST., Bury Bridge  
BURY Tel. 957

*A  
Personal  
Men's  
Wear  
Service*

**Sam  
FLETCHER**

42 HAYMARKET ST.,  
BURY Tel. 1032

**NEXT MATCH AT GIGG LANE:—**

CENTRAL LEAGUE, JANUARY 25th.

v.

**HUDDERSFIELD TOWN**

Kick-off at 2-30 p.m.



# 'ALICE'

Ladies' High-Class  
:: Hairdresser ::

Specialist in . . .  
TINTING  
BLEACHING and  
PERMANENT WAVING

TRIMMING  
MARCEL WAVING  
SHAMPOO & SETTING

2 Cross Street, Bury  
Telephone 2021

# CARRS

LTD. Est. 1896

MAIN AGENTS FOR—

AUSTIN

MORRIS

JAGUAR

AND

RILEY CARS

Any make of Car and Commercial  
Vehicle Supplied

SERVICE AFTER SALES

KNOWSLEY STREET  
BURY

TEL. 598

# LA SCALA PICTURE HOUSE

SPRING STREET, BURY

Tel. 140

General Manager : J. MATHER

Tel. 140

TO-NIGHT (SATURDAY).

"ABILENE TOWN."

ALL NEXT WEEK—

MARX BROTHERS  
in

"NIGHT IN CASABLANCA"

Also "STAR IN THE NIGHT."

## COAL SCORERS.

(League matches only).

### 1st Team.

Carter .....	10
Lindsay .....	7
Quigley .....	5
Mutch .....	5
Halton .....	4
Kilshaw .....	3
Meaney .....	2
Moss .....	2
Jones .....	2
N. Berry .....	1
Livesey .....	1
Bainbridge .....	1
Reid .....	1
Roberts .....	1

F.A. Cup—Halton ... 1

### 2nd Team.

McGill .....	4
Roberts .....	4
Blondel .....	3
Massey .....	3
Wyles .....	3
Jenkins .....	3
Leeming .....	3
Meaney .....	2
Woodcock .....	2
Livesey .....	1
Tompkin .....	1
N. Berry .....	1
Fairclough .....	1
Opponents .....	1

## RAGGETT'S

Nourishing

STOUT

The

FINEST STOUT

procurable  
DELIGHTFUL  
REFRESHING  
& SUSTAINING

Constitutes a Real  
Tonic & Restorative

Sold at all Clubs and Free Houses  
or supplied direct by

PERHAM & Co.

12 Market Street, Bury

Wholesale Bottling Agents  
for Bury and District

Phone Bury 70

For Everything Electrical

T. Tomlinson

LIMITED

REGISTERED

Electrical Contractors

AND

Refrigerator Engineers

"THE ELECTRIC SHOP"

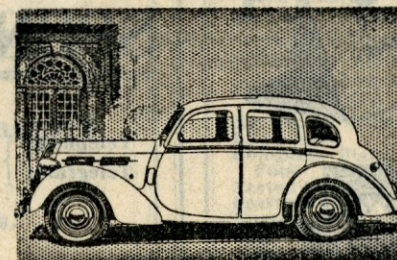
119 THE ROCK, BURY

PHONE 441 BURY

RADIO SALES AND SERVICE

CLIFF HOLDEN (Motors) Ltd. AGENTS & STOCKISTS

STANDARD  
and  
TRIUMPH  
CARS



B.S.A.,  
ARIEL  
TRIUMPH  
and  
PANTHER  
Motor Cycles

CLIFF HOLDEN (Motors) LTD.  
Millett Street Showroom and Garage, Bury



# Sam Taylor

(Bury) LTD.

— for —

## ALL SPORTS EQUIPMENT

Official Suppliers to  
BURY FOOTBALL CLUB

NOW READY TO SUPPLY YOU  
WITH FOOTBALL, HOCKEY, BOXING  
and all  
WINTER SPORTS REQUIREMENTS

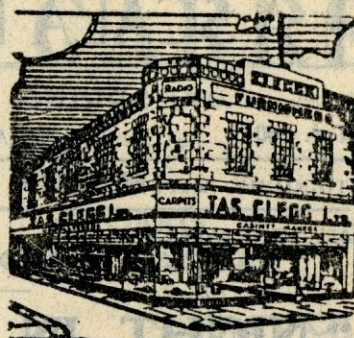
## VISIT

→ 16, Silver St.,  
Bury

Tel. 320



Re-upholstering and Re-polishing.



# JAS. CLEGG, LTD.

The Better Grade Furnishers

11-17 Haymarket Street,  
131 The Rock,  
2-8 Lever Street,

32-34 Market Place, HEYWOOD  
Palatine Hall, "  
47 Abbey Street, ACCRINGTON  
1-3 Barnes Street, "

Works: Lever Works - Lever Street, - Bury.

Goods Taken in Exchange.

## BURY

Phone:  
669

Phone:  
6153

Phone:  
2936

Colours: White Shirts and

## BURY

Blue Knickers.

RIGHT

ROBINSON

LEFT

2 GRIFFITHS (G.) GRIFFITHS, W.

4 JONES

5 HART

6 HALTON

7 KILSHAW

8 QUIGLEY

9 MUTCH

10 CARTER

11 REID

Referee—

B. J. FLANAGAN  
(Sheffield).



Linesmen:  
J. McCANN  
(Red Flag).

A. SYKES  
(Blue Flag).

11 DUNCAN

10 DRIVER

9 BILLINGTON

8 DANIEL

7 WAUGH

6 GARDINER

5 SAGER

4 SOO

3 LAKE

2 COOKE

LEFT

BYWATER

RIGHT

## LUTON TOWN

# SPENCER & CLARKE LTD.

Telephone }  
Telegrams } 836

## Joiners, Builders and Contractors

PUBLIC MORTAR MILL

Dealers in all Building Materials.

## ELTON SAW MILLS - BURY

LANCS.



# "CROWN" ALES

On Draught  
and in Bottle

FINEST WINES AND  
SPIRITS PROCURABLE.

Crown Brewing Co. Ltd.,  
Rochdale Road, Bury

Telephone - 1190 - 1191

Established 1898.

## Taylor's Fertilizers

(as supplied to Bury Football Club)

"Super" Fertilizer for  
BOWLING GREENS, GOLF  
GREENS, FOOTBALL FIELDS,  
CRICKET SQUARES.

An unrivalled fertiliser supplied to  
most of the public parks and sports  
grounds in the country.

Expert Advice on Turf.

We analyse soils free of charge,  
and our practical expert representa-  
tives will inspect any green and  
advise on all questions relating to  
sports turf or ornamental lawns.

TAYLOR'S XL Worm Killer Lawn Sand Complete Plant Food Tested Grass Seed Pearlwort destroyer Fusarium Leatherjacket ..	TAYLOR'S Killweed Killpest Insecticide Anti-Clover Feed Charcoal etc., etc., etc.
---	---

RIGBY TAYLOR, LTD.  
VICTORIA WORKS, BOLTON.  
TELEPHONE 3956.



PRACTISE SAFETY YOURSELF—OTHERS WILL FOLLOW.

## SCOREBOARD

SATURDAY, JANUARY 18th, 1947.

	CLUBS	Half Time	Final		CLUBS	Half Time	Final
A	Liverpool .....			L	Birmingham .....		
	Bolton Wanderers .....				Barnsley .....		
B	Blackburn Rovers .....			M	Bradford .....		
	Huddersfield Town .....				Swansea Town .....		
C	Blackpool .....			N	Coventry .....		
	Sunderland .....				Newport .....		
D	Charlton Athletic .....			P	Fulham .....		
	Preston North End .....				Plymouth Argyle .....		
E	Derby County .....			R	Manchester City .....		
	Stoke City .....				Millwall .....		
F	Leeds United .....			S	West Bromwich A. ....		
	Chelsea .....				Burnley .....		
G	Middlesbro' .....			T	West Ham United .....		
	Manchester United .....				Chesterfield .....		
H	Portsmouth .....			U	Sheffield Wednesday .....		
	Everton .....				Leicester City .....		
J	Arsenal .....			V	Notts Forest .....		
	Aston Villa .....				Southampton .....		
K	Brentford .....			W	Newcastle United .....		
	Wolves .....				Tottenham Hotspur .....		

## NO MATCH—'Home' or 'Away'

For the **QUALITY & VALUE** offered  
by **SLY'S!**

RINGS, WATCHES, CUTLERY, Etc.,  
and worthwhile Gifts for every possible  
occasion

Buy your gifts from—  
**SLY'S & BURY**  
The Jewellers  
**2-4 HAYMARKET STREET**  
Immense variety of stock—See windows

## H. Ashworth & Son

**CENTRAL  
HEATING  
SPECIALISTS**

**HORROCKS STREET  
BURY** Tel. 419

## James Lawless

AND SONS

Wholesale & Retail Iron-  
monger, Mill Furnisher  
TOOLS FOR ALL TRADES

**Market Hall :: Bury**  
Marble Chimney Pieces . .  
Wood Mantels . . Stoves  
Grates . . Cooking Ranges

Range Show Rooms—

**22 Princess Street, Bury**  
Telegrams: "Lawless, Ironmonger, Bury."  
Telephone No. 480

YOUR BEST SAFETY DEVICE IS IN YOUR HEAD.

## CROMPTON'S 'FLU POWDERS

## Cure Colds in a Night

**2d. Each**                      **3 for 5½d.**

Obtainable Everywhere

**CROMPTON AND PRESTON LIMITED, Chemists**  
**50 CROSTONS ROAD, BURY**                      Telephone 1230 Bury

## THE ALE WITH THE SALE

## BURY BREWERY MILD

Bury Brewery Co. Ltd.,

George Street,

Bury.

## TYRE FACILITIES LTD.

● Don't be **PENALISED**—

● See us about your tyres and  
**KICK OFF RIGHT**

FITTING DEPOT:

**MILLETT STREET :: BURY**

'Phone 1603



## LEAGUE TABLES.

## SECOND DIVISION.

	P	W	D	L	F	A	P
Manchester C...	24	15	6	3	53	22	36
Burnley...	24	12	9	3	34	18	33
Birmingham...	25	15	2	8	46	22	32
Newcastle...	25	13	6	6	63	33	32
Chesterfield...	24	10	9	5	31	21	29
Tottenham...	24	10	8	6	43	32	28
West Brom. A...	24	12	3	9	53	46	27
Leicester City...	24	12	3	9	44	39	27
Luton Town...	24	10	4	10	41	37	24
Southampton...	23	8	7	8	45	40	23
Coventry City...	24	7	9	8	29	31	23
Plymouth A...	24	9	5	10	47	54	23
BURY...	25	7	8	10	45	46	22
Notts Forest...	23	9	4	10	37	40	22
Fulham...	23	9	4	10	40	48	22
Barnsley...	25	8	6	11	47	57	22
Bradford...	24	7	7	10	35	40	21
West Ham...	23	8	3	12	34	46	19
Millwall...	23	7	4	12	30	46	18
Sheffield Wed...	25	5	6	14	42	60	16
Swansea Town...	23	6	4	13	33	49	16
Newport...	23	5	1	17	37	82	11

## CENTRAL LEAGUE.

	P	W	D	L	F	A	P
Manchester U...	24	16	4	4	68	42	36
Manchester C...	23	14	4	5	53	38	31
Bolton Wan...	23	11	8	4	54	38	30
Liverpool...	25	10	9	6	45	30	29
Burnley...	24	13	2	9	48	35	28
Wolves...	22	11	6	5	47	36	28
Blackpool...	24	12	3	9	50	39	27
Everton...	24	11	5	8	43	35	27
Sheffield U...	26	10	7	9	51	53	27
Huddersfield...	23	11	4	8	53	40	26
West Brom. A...	25	12	2	11	54	57	26
Aston Villa...	24	11	3	10	52	42	25
Birmingham...	24	10	3	11	51	44	23
Newcastle...	23	8	5	10	46	50	21
Sheffield Wed...	25	9	2	14	35	43	20
Stoke City...	25	6	7	12	37	60	19
Chesterfield...	22	4	10	8	38	49	18
Blackburn R...	23	8	2	13	44	58	18
BURY...	24	6	5	13	32	46	17
Preston N.E...	22	6	4	12	40	46	16
Derby County...	25	7	2	16	50	71	16
Leeds United...	22	5	4	13	36	63	14

## DO YOU KNOW?

1.—Who was the international forward who scored more Football League goals in his 19th season than in any other of his career?

2.—How many amateurs in history have made the maximum appearances with a Football League team for a completed season?

3.—What was the highest number of natives of the Isle of Man who ever acted as professionals with the same Football League club at the same time?

4.—What was the highest proportion of goals obtained by Scots for any Football League side in history for a completed season?

5.—Which was the only case on record of three brothers who filled the same position all being with the same Football League club together?

6.—Which international inside forward figured in the Football League for 21 seasons and never finished any campaign as his side's chief scorer?

(For Answers, see over.)

## FENTON BROS. &amp; TARPEY LTD.

## Oil, Paint and Colour Merchants

Notwithstanding the difficulties, we still endeavour to maintain our standard of quality in such Paints, Oil Bound Water Paints, Brushes, etc., etc., as are available.

Address : : 6 Haymarket Street, Bury

'Phone: BURY 464.

## FIXTURES

## Second Division

1946			
Aug. 31	Fulham .....	H	7 2
Sept. 4	Manchester City .....	A	1 3
" 7	Southampton .....	A	1 1
" 14	Luton Town .....	A	0 2
" 18	Manchester City .....	H	2 2
" 21	Plymouth Argyle .....	H	3 3
" 25	Bradford P. A. ....	A	2 2
" 28	Leicester City .....	A	0 0
Oct. 5	Chesterfield .....	H	0 2
" 12	Millwall .....	A	0 1
" 19	Newport County .....	H	0 1
" 26	Barnsley .....	A	0 4
Nov. 2	Burnley .....	H	2 2
" 9	Tottenham H. ....	A	1 2
" 16	Swansea Town .....	H	3 3
" 23	Newcastle United .....	A	1 1
" 30	West Brom. Albion .....	H	4 0
Dec. 7	Birmingham City .....	A	0 3
" 14	Coventry City .....	H	1 0
" 21	Nottingham F. ....	A	0 2
" 25	Sheffield W. ....	H	4 2
" 26	Sheffield W. ....	A	5 2
" 28	Fulham .....	A	0 2
1947			
Jan. 1	Bradford P. A. ....	H	6 3
" 4	Southampton .....	H	2 1
" 11	F. A. Cup .....		1 5
" 18	Luton Town .....	H	
" 25	Plymouth Argyle .....	A	
Feb. 1	Leicester City .....	H	
" 8	Chesterfield .....	A	
" 15	Millwall .....	H	
" 22	Newport County .....	A	
March 1	Barnsley .....	H	
" 8	Burnley .....	A	
" 15	Tottenham H. ....	H	
" 22	Swansea Town .....	A	
" 29	Newcastle United .....	H	
April 4	West Ham United .....	H	
" 5	West Brom. Albion .....	A	
" 7	West Ham United .....	A	
" 12	Birmingham City .....	H	
" 19	Coventry City .....	A	
" 26	Nottingham F. ....	H	

## Central League

1946			
Aug. 31	Blackpool .....	A	0 1
Sept. 4	Derby County .....	H	3 0
" 7	Bolton Wanderers .....	H	1 4
" 9	Blackburn Rovers .....	A	3 2
" 14	Everton .....	H	1 2
" 18	Derby County .....	A	2 2
" 21	Huddersfield Town .....	A	1 2
" 28	Wolverhampton W....	H	0 2
Oct. 5	Chesterfield .....	A	1 0
" 12	Aston Villa .....	H	5 2
" 19	Liverpool .....	A	2 2
" 26	Leeds United .....	H	2 4
Nov. 2	West Bromwich A. ....	A	0 2
" 9	Newcastle United .....	H	4 4
" 16	Birmingham City .....	A	0 2
" 23	Stoke City .....	H	1 1
" 30	Manchester United .....	A	1 4
Dec. 7	Sheffield United .....	H	0 2
" 14	Burnley .....	A	0 1
" 21	Preston N. E. ....	H	2 1
" 26	Manchester City .....	A	0 2
" 28	Blackpool .....	H	1 1
1947			
Jan. 4	Bolton Wanderers .....	A	0 2
" 11	Manchester City .....	H	1
" 18	Everton .....	A	
" 25	Huddersfield Town .....	H	
Feb. 1	Wolverhampton W....	A	
" 8	Chesterfield .....	H	
" 15	Aston Villa .....	A	
" 22	Liverpool .....	H	
March 1	Leeds United .....	A	
" 8	West Brom. Albion .....	H	
" 15	Newcastle United .....	A	
" 22	Birmingham City .....	H	
" 29	Stoke City .....	A	
April 4	Sheffield W. ....	A	
" 5	Manchester United .....	H	
" 7	Sheffield W. ....	H	
" 12	Sheffield United .....	A	
" 19	Burnley .....	H	
" 26	Preston N. E. ....	A	
May 3	Blackburn Rovers .....	H	



## LUTON TOWN.

Club formed in 1885.

Record attendance.—25,746 v. Swindon Town (Cup), January 22nd, 1938.

Best in F.A. Cup.—Reached sixth round in 1932-33.

Biggest Football League victory.—12—0 v. Bristol Rovers, April 13th, 1936.

Heaviest defeat.—0—9 v. Small Heath, November 12th, 1898.

Most Football League goals for club up to start of 1939 war.—150 by A. Rennie from 1925-26 to 1934-35 inclusive.

Record individual total of Football League goals for one season.—55 by J. Payne in 1936-37.

Best individual scoring feat for one Football League match.—Ten goals by J. Payne v. Bristol Rovers, April 13th, 1936.

Best individual scoring feats against for one Football League match.—Four goals by P. Hunt (Woolwich Arsenal), December 31st, 1898; H. J. Fleming (Swindon Town), August 28th, 1920; E. T. Watkins (Brentford), January 28th, 1928; J. W. Holliday (Brentford), February 1st, 1933; W. H. Lake (Coventry City), February 19th, 1938.

Total players (while with club) supplied for International Championship matches.—Four: two English, two Irish.

Longest service in club's employ among present registered professionals.—George Stephenson, secured in June, 1934.

Total players ordered off in Football League matches since 1914-18 war.—Five.

## HERE'S THE ANSWER.

1.—The late George Harrison, the England outside-left, who did so when scoring 16 for Preston North End in season 1928-29.

2.—Only one in the late Harry Stapley, a centre-forward, who appeared in all Glossop's 38 Second Division matches in season 1910-11.

3.—That when Dale (centre half-back), Mills (inside-right), and Cannell (centre-forward) were Bury professionals in season 1911-12.

4.—That in season 1937-38, when 60 of Preston North End's 64 goals in the First Division were shared by nine Scots, the other four being scored by Richard Watmough, an English-born outside-right.

5.—That when three Scots in David, James, and Robert Corbett all were West Ham United right half-backs in season 1937-38.

6.—William Gillespie, the Irishman, whose clubs before his retirement in May, 1932, were Leeds City and Sheffield United.

Book your Outings with

## WARBURTON BROS

(BURY) Ltd.

92, Market Street, TOTTINGTON

26 and 32-SEATER RADIO COACHES

Equipped with Central Heating for Winter Season  
Football Matches, Concerts and Theatre Parties catered for

TEL. 62 TOTTINGTON

## JAMES BUNN

Proprietor: W. H. PICKEN

Saddler and Leather Goods Dealer

DOG REQUISITES

CASES AND BAGS

REPAIRS TO

LEATHER GOODS

35, Bolton Street  
BURY

FAIR PLAY Guaranteed

SCORE Every time by

PASSING your POINTS

to

SHAW & STARKEY

(E. Starkey, Prop.)

Provision Merchants

: and Grocers :

MARKET HALL  
BURY

TEL. 532

Est. 1871

Tel. 797

## HEAP & SON Ltd.

FOR ALMOST

YOUR EVERY

NEED!

Departmental Store

The Rock, BURY

## ROTHWELL & Co.

(BURY) LTD.

Commercial and  
General Printers  
and Stationers

Account Book  
Manufacturers, etc.

33 UNION SQUARE

BURY Tel. 263



Headquarters—BURY AMATEUR FOOTBALL CLUB

# **DERBY HOTEL**

## **BURY**

*First-Class Commercial Hotel*

CENTRE OF TOWN WITH COMMERCIAL,  
COFFEE, SMOKE AND PRIVATE ROOMS.  
WELL-APPOINTED BEDROOMS

LUNCHEONS AND TEAS

**MAGEE'S ALES**

A.A., R.A.C., C.T.C.

TELEPHONE 230

# **VEHICLE BODY REPAIRS**

(BURY)

High-Class Welding and Car Body Repairs

We make and fit Running Boards, Valances,  
Door Panels, etc.

Any Wing made to pattern — Many makes  
in Stock

Complete Body Re-Builds and Re-Sprays

**MILL BROW GARAGE, BURY GROUNDS**  
**BOLTON STREET, BURY**

Phone 691