



# LUTON TOWN FOOTBALL AND ATHLETIC CO. LTD.

OFFICIAL  
JOURNAL

PRICE 2d



League—Division II

April 22nd, 1939.

LUTON TOWN v. MILLWALL

“TRUE-FORM”  
THE FINEST FOOTWEAR  
IN THE TOWN



BUY DIRECT FROM THE MAKERS

LOCAL BRANCH:

32, GEORGE STREET

Head Office and Factories: NORTHAMPTON



*Insist upon the  
Building Materials for  
your new house coming from*

## POWDRILL'S

BUILDERS' MERCHANTS  
COAL and COKE MERCHANTS  
BRICK MANUFACTURERS  
SAND & GRAVEL QUARRY OWNERS

GEORGE POWDRILL & SON LTD., 1, 3 & 5, HITCHIN ROAD, LUTON  
TELEPHONE 2073 (2 Lines)

## HELEY'S CAFE

MILL STREET

NEXT TO PALACE THEATRE, LUTON

### DINNERS

11.30 — 2.30

### TEAS

3.30 — 6

### SUPPERS

6 — 12

### SPECIAL

### FOOTBALL TEAS

FISH AND CHIPS  
SAUSAGE AND MASH  
— ETC. —

PROPRIETOR: A. S. HELEY



*Follow the Town  
Any match, anywhere*

*We guarantee to get you there  
We take the team  
So why not you?*

*But make it Coopers if you do*

**COOPERS  
COSY COACHES**

F. J. COOPER LTD.

**OXEN ROAD GARAGE — LUTON**

Telephone 731

LUTON  
FOOTBALL AND



TOWN  
ATHLETIC CO.

Telephone No. 3151-2.

LIMITED.

### CLUB NOTES by "Hatter"

WE welcome to our ground today, after a year's absence, our old friends and rivals, Millwall. The "Lions" followed our footsteps and won the championship of the Third Division (Southern Section) last term and with it the corresponding promotion to the Second Division. They have fully earned their rise in status as their League record shows and although they have no interest in the ultimate destiny of the championship neither have they the corresponding worries attached to relegation, for they occupy a very safe position in the middle of the table. The "Lions" have achieved many remarkable performances, the most outstanding being their defeat of Manchester City at Maine Road by six goals to one, whilst they have also forced drawn games at Bury, Newcastle, Plymouth, Southampton, Swansea, West Bromwich and West Ham United; in addition to which they had the honour and satisfaction of defeating Norwich City at the Norfolk town, on the memorable occasion of the visit of H.M. the King to his first Football League encounter. At the "Den" they have only fallen from grace thrice, their conquerors being West Bromwich Albion, Southampton, and West Ham United, but Burnley, Bury, Coventry City, Fulham, Newcastle and Swansea have all taken away a point with them also. Congratulations then Millwall on your record this season, you have done extremely well, but we want no "shocks" today.

On Monday evening next, those supporters who are interested in schoolboy football have a chance of seeing both the Junior and Senior champions of their respective Leagues (Beechwood Road and Denbigh Road) in opposition against teams selected from the rest of the League. The Juniors (Beechwood Road) start the ball rolling at 5.45 p.m., to be followed by the Seniors. Admission to both matches is 6d. for adults and 3d. for boys and only the Grand Stand Entrances at Kenilworth Road will be open for admittance.

Then on Wednesday next, we have two further matches, the first in the afternoon, kick-off 3.30, between our local Police and the Northampton Borough Police, the proceeds of which are for the Funds of the Local Police Boot Fund. A very worthy charity and one that should be supported by all. Admission 6d. In the evening Rushden Town have accepted our invitation to play our final United Counties League game here. This will provide an opportunity for all our supporters to view the "A" team in a League encounter. The kick-off is not until 6.45 and the usual London Combination prices of admission will be in operation.

### OUR VISIT TO EASTBOURNE

On behalf of the players and Officials of the Town Club I would like to express my appreciation of the splendid reception and arrangements made for all our party by the Mayor and Officials of Eastbourne. Everything possible was done for us to make our visit a happy and enjoyable one. The match played on Wednesday, was a very interesting one and the Barnet players gave a very good account of themselves and showed us they were one of the best amateur clubs in the country. We congratulate them on the sporting game they put up. I trust that the friendship that has been formed between the Eastbourne Club and ourselves will be continued for many years. I believe every one of our party, players and Officials, came away with the best of opinions of Eastbourne, which is charmingly situated with plenty of good class hotels, good music, pleasant walks, good gardens and parks, in fact a seaside resort one can recommend with very much pleasure to all Luton residents.

CHAS. JEYES, *Chairman.*

### IMPORTANT

It has come to the knowledge of the Directors that many supporters, who travel to the matches here from the neighbouring towns and villages, have often cause for complaint as to the inadequacy and infrequency of the rail and/or road transport. This seems to be more especially so during the period when the Kick-Off must be fixed for 2.30 p.m.

Will all spectators who have any complaint whatsoever in this respect please write to the Secretary, Luton Town Football Club, Kenilworth Road, Luton, giving the particulars, when the club will take the matter up with the transport services concerned and endeavour to find a remedy.

The Directors appreciate very much indeed the material already forwarded by certain supporters, but would urge the necessity from other complainants, if a case is to be made.

**DO NOT MISS OBTAINING A  
COPY OF THE PROGRAMME  
ON SATURDAY, MAY 6th. It will  
contain a full sized autographed  
Art Plate of HUGH BILLINGTON.**

Previous Art Plates, can be obtained on application to the Editor, 70-72, Kenilworth Road, Luton. Price 2d.



## ATTENDANCE BAROMETER

1937	1938		1937			1938		
			£	s.	d.	£	s.	d.
Aug. 28	Aug. 27	Brighton & Hove Reserves ...	...	...	...	6356	144	15 3
	Aug. 31	Southend United Reserves ...	7346	167	0 3	17689	811	11 4
Sept. 1		Newcastle United ...	...	...	...	...	...	...
Sept. 4	Sept. 3	Aston Villa ...	25349	1299	14 4	16547	747	0 6
Sept. 8	Sept. 7	Norwich City ...	...	...	...	...	...	...
Sept. 11	Sept. 10	Manchester United ...	20610	994	1 2	5955	131	1 7
Sept. 18	Sept. 17	Tottenham Hotspur Reserves ...	...	...	...	...	...	...
Sept. 22	Sept. 24	Clapton Orient Reserves ...	4823	93	6 7	7256	163	5 10
		Watford Reserves ...	...	...	...	...	...	...
Sept. 25	Oct. 1	Chelsea Reserves ...	7725	175	7 7	5826	126	10 7
Oct. 2	Oct. 5	Southend Reserves ...	...	...	...	...	...	...
Oct. 9	Oct. 8	Tottenham Hotspur ...	23788	1235	7 8	17436	808	7 6
Oct. 16	Oct. 15	Leicester City Reserves ...	3626	69	19 2	7831	182	7 4
Oct. 23	Oct. 22	Sheffield United ...	...	...	...	...	...	...
Oct. 30	Oct. 29	Queens Park Rangers Reserves ...	6558	142	1 11	1300	33	14 8
Nov. 5	Nov. 4	Chelsea Reserves ...	17650	821	19 0	21061	1067	7 8
Nov. 13	Nov. 12	Bury ...	...	...	...	...	...	...
Nov. 20	Nov. 19	Leicester City Reserves ...	...	...	...	...	...	...
Nov. 27	Nov. 26	Tottenham Hotspur ...	5236	107	4 10	14955	684	3 8
Dec. 3	Dec. 2	Brighton & Hove Reserves ...	...	...	...	...	...	...
Dec. 11	Dec. 10	Bradford ...	6592	141	16 2	6698	151	14 7
Dec. 18	Dec. 17	Swansea Town Reserves ...	...	...	...	...	...	...
Dec. 25	Dec. 24	Brentford Reserves ...	17757	897	18 10	16819	782	12 4
Dec. 27	Dec. 26	West Ham United ...	...	...	...	...	...	...
	Dec. 25	Blackburn Rovers ...	5571	116	1 10	5744	129	16 4
Jan. 1	Jan. 1	Reading Reserves ...	...	...	...	...	...	...
Jan. 8	Jan. 7	Clapton Orient Reserves ...	16776	818	16 6	18331	910	7 10
Jan. 15	Jan. 14	Blackburn Rovers ...	...	...	...	...	...	...
Jan. 22	Jan. 21	West Ham United ...	6929	149	18 5	6208	137	11 9
Jan. 29	Jan. 28	Millwall Reserves ...	...	...	...	...	...	...
Feb. 5	Feb. 4	West Ham United Reserves ...	17088	802	11 10	15936	744	9 0
Feb. 12	Feb. 11	Chesterfield ...	7116	158	2 0	5264	112	13 4
Feb. 19	Feb. 18	Sheffield Wednesday ...	...	...	...	...	...	...
Feb. 26	Feb. 25	Arsenal Reserves ...	7116	158	2 0	12747	574	15 0
Mar. 5	Mar. 4	Bristol City Reserves ...	13529	653	13 6	4006	82	0 10
Mar. 12	Mar. 11	Fulham ...	...	...	...	...	...	...
Mar. 19	Mar. 18	Chesterfield ...	5487	114	16 2	8887	382	8 10
Mar. 26	Mar. 25	West Ham United Reserves ...	...	...	...	...	...	...
Apr. 2	Apr. 1	Crystal Palace Reserves ...	14492	680	2 6	3247	66	8 8
		Norwich City ...	15829	756	3 8	17125	809	3 6
		West Bromwich Albion ...	...	...	...	...	...	...
		Barnsley ...	...	...	...	...	...	...
		Southampton Reserves ...	...	...	...	...	...	...
		Notts Forest ...	...	...	...	...	...	...
		Coventry City Reserves ...	9178	223	9 9	5465	119	14 0
		Bournemouth Reserves ...	...	...	...	...	...	...
1938	1939	Stockport County ...	14138	644	7 8	16163	765	15 6
Jan. 1	Jan. 1	Northampton Town Reserves ...	6672	148	19 9	13120	603	3 2
Jan. 8	Jan. 7	Manchester City ...	...	...	...	...	...	...
Jan. 15	Jan. 14	Portsmouth Reserves ...	4941	101	0 8	4291	89	18 1
Jan. 22	Jan. 21	Plymouth Argyle ...	...	...	...	...	...	...
Jan. 29	Jan. 28	Queens Park Rangers Reserves ...	...	...	...	...	...	...
Feb. 5	Feb. 4	Tottenham Hotspur Reserves ...	4814	96	19 1	13547	617	2 10
Feb. 12	Feb. 11	Sheffield United ...	8414	378	17 8	4715	101	0 8
Feb. 19	Feb. 18	Burnley ...	...	...	...	...	...	...
Feb. 26	Feb. 25	Burnley ...	14957	678	14 8	5808	129	2 11
Mar. 5	Mar. 4	Charlton Athletic Reserves ...	...	...	...	...	...	...
Mar. 12	Mar. 11	Fulham Reserves ...	...	...	...	...	...	...
Mar. 19	Mar. 18	Coventry City ...	17188	819	10 6	11264	528	16 0
Mar. 26	Mar. 25	Swansea Town ...	...	...	...	...	...	...
Apr. 2	Apr. 1	Bradford ...	14494	655	6 2	8304	207	1 1
		Arsenal Reserves ...	...	...	...	...	...	...
		Crystal Palace Reserves ...	4551	88	4 5	12788	578	5 0
		Tranmere Rovers ...	...	...	...	...	...	...
		Southampton ...	14428	639	10 0	4028	82	1 8
		Portsmouth Reserves ...	...	...	...	...	...	...
		Fulham Reserves ...	4707	93	2 8	11943	544	10 6
		Bury ...	...	...	...	...	...	...
		Sheffield Wednesday ...	13216	580	9 10	4783	103	17 1
		Northampton Town Reserves ...	...	...	...	...	...	...
		Brentford Reserves ...	4366	83	13 8	...	...	...
Carried Forward			375941	15578	10 5	359454	14254	19 1

## ATTENDANCE BAROMETER—Continued.

1938	1939		1938			1939		
			£	s.	d.	£	s.	d.
		Brought Forward	375941	15578	10 5	359454	14254	19 1
April 9	April 8	Southampton ...	...	...	...	15949	753	8 6
	April 7	Fulham ...	...	...	...	16322	768	5 4
April 16	April 15	Plymouth Argyle ...	11516	499	3 8	4763	105	7 10
	April 10	Coventry City Reserves ...	...	...	...	4689	102	0 6
	April 15	Swansea Town Reserves ...	...	...	...	...	...	...
		Southampton Reserves ...	4786	94	13 11	...	...	...
			392243	16172	8 0	401177	15984	1 3

## PLAYER'S APPEARANCES

	League II		London Comb.		Utd. Counties League		F.A. Cup		Other Matches		Total	
	App.	Goals	App.	Goals	App.	Goals	App.	Goals	App.	Goals	App.	Goals
Billington, H. J. R. ...	24	28	15	14			1		2	2	42	44
Burgess, W. W. ...	4		23	4					2	1	29	5
Campbell, R. ...			22	1	9				2		33	1
Carr, G. M. ...					9				4		13	
Carroll, J. ...	11		6	3	5	2			4	2	26	7
Carte, R. ...	2		9		6	1			6		23	1
Clark, C. ...	14	6	15	6	5	5	1				36	17
Coen, J. L. ...	29		14				1		2		46	
Connelly, E. ...	38	13					1		2	1	41	14
Dolman, H. W. ...	10				7				5		22	
Dreyer, G. ...	20		14	1			1		2		37	1
Duke, G. E. ...					9				3		12	
Dunsmore, T. H. ...	37						1		2		40	
Ferguson, C. ...	9	1	8	5	13	8			5	2	35	16
Finlayson, J. ...	39	1					1		2	2	42	1
Fletcher, H. H. ...					9				3		12	
Fullarton, C. ...					4	1			4	2	8	3
Gager, H. E. ...			38	10	1				2		41	10
Gardiner, D. ...			20	1	7	1			4	1	31	2
Goodyear, G. ...			1		15				7		23	
Hogg, F. ...			14	2	10	8			9	9	32	20
Kidd, G. I. ...			6						1		7	
King, T. P. ...	23		13		1		1		1		39	
Ladd, C. J. ...					3				1		4	
Laing, J. F. ...			17	4	9	3			5		31	7
Lewis, J. ...			18		8	1			2	1	28	2
Loughran, J. ...	16		12		7	2			1		36	2
Lutterloch, B. R. ...			42						3	1	45	1
Mayberry, S. ...			28		5				1		34	
Nelson, J. H. ...	19		13						1		33	
Redfern, W. J. ...	30	12	14	11			1		2	4	47	28
Roberts, F. ...	34	1	5	3			1		2	1	42	5
Scott, A. F. ...					2				1		3	
Smith, T. S. ...	16		19	2	3				2		39	2
Stephenson, G. H. ...	37	11	1	1			1		2		41	12
Stevens, R. F. ...	2		31	14	5	6			2		41	20
Strathie, J. ...			9		10	2			7	1	26	3
Vinall, E. J. ...	15	5	23	20					2	1	41	26
Wale, J. ...			10		14	2			7		31	2
Amateurs and Others	2		2		55	17			28	14	85	33

Next Matches, Wednesday, April 26th, 1939.

UNITED COUNTIES LEAGUE

LUTON TOWN "A" v. RUSHDEN TOWN

Kick - Off 6.45 p.m.

Saturday, April, 29th 1939.

LONDON COMBINATION

LUTON TOWN RES. v. MILLWALL RES.

Kick - Off 3.15 p.m.

LONDON COMBINATION PRICES OF ADMISSION



CORNER!

**An opportunity not to be wasted.**

See how carefully the winger places the ball—the tense expectancy in the goal-mouth as the winger prepares to make even another opportunity.

We can give you another exceptional opportunity—to be the proud owner of your own **CORNER OF ENGLAND**. More and more people are taking advantage of the modern system of house purchase. Let us help you realise the **GOAL** of your ambition. The following is a typical example.

£30 DEPOSIT. No other costs whatsoever. Modern S.D. house with hall, drawing room, dining room, modern tiled kitchen, bathroom (fitted wash-basin and W.C.), 3 bedrooms, H. and C. water to all taps, outside coals and W.C., good garden. Repayments much less than rent.

“OWN A MODERN HOUSE—IT'S CHEAPER IN THE LONG RUN”

**SELL & MITCHELL**

*Auctioneers, Land & Estate Agents*

7 & 9, PRINCESS STREET, LUTON

PHONE 2003/4

95, HIGH STREET NORTH, DUNSTABLE

PHONE 354

**A**  
Point  
to remember!  
**E. A. ALLEN**  
the Printer of this  
Programme  
WILL GIVE SERVICE  
AND SATISFACTION  
424, DUNSTABLE ROAD  
LUTON  
Telephone 1626

**To-Day's Half-Time Scores****FIRST LIST**

A	BIRMINGHAM	v.	BLACKPOOL	.....
B	BOLTON WAN.	v.	WOLVES	.....
C	LEEDS UNITED	v.	ASTON VILLA	.....
D	LEICESTER C.	v.	GRIMSBY T.	.....
E	LIVERPOOL	v.	SUNDERLAND	.....
F	MANCH. UN.	v.	BRENTFORD	.....
G	MIDDLESBRO'	v.	DERBY CO'NTY	.....
H	PRESTON N.E.	v.	HUDDERSFIELD	.....
K	STOKE CITY	v.	ARSENAL	.....
L	BURNLEY	v.	WEDNESDAY	.....
M	COVENTRY C.	v.	TRANMERE R.	.....
N	NEWCASTLE	v.	SWANSEA T.	.....

NOTE—The Letter in the Programme corresponds with the letter on the Board—thus A 0—1 means that the first-named Club has scored 0 and their opponents 1.

MONO  BRAND  
REGD.

**Specialities**

Paint and Enamel  
Manufacturers

“Stuart” Series  
Wallpapers

**OGDEN &  
CLEAVER**

Stuart Street, LUTON

TELEPHONE 580

**LUTON  
GAS COMPANY**

JUST A TURN OF THE TAP  
AND GAS GIVES INSTANT  
HOT WATER, REAL FIRE-  
SIDE COMFORT, CAREFREE  
COOKING

*Be up-to-date with Gas*

Showrooms—GEORGE STREET  
and DUNSTABLE ROAD

THE BEST DEFENCE  
*against*

WINTER'S ATTACK

**‘OXAVIN’  
TONIC WINE**

Large Bottle 4/6

Medium Bottle 2/6

**L. GREENER,** <sup>Wine</sup> Merchant

60, WELLINGTON STREET, LUTON

(Corner of Stuart Street)

**H. R.  
WILLIAMS**

REGISTERED  
ELECTRICAL CONTRACTOR

and Member of the

Electrical Contractors' Association

17, DURHAM ROAD

LUTON

PHONE: LUTON 2012

**NEWBERY**

& CO. (LUTON) LIMITED

32/36, CROMWELL ROAD  
LUTON

Builders' Merchants

Ironmongers

Door and Gate Importers

PHONE 294

PRIVATE 511

PHONE 223

EST. 1860

**WHITE'S**

again have the  
largest stock of

**RUBBER  
WELLINGTONS**

— AND —

**All Rubber Boots  
and Shoes**

Works & Contractors Supplied

Luton's Largest and  
Super Footwear Stores

**H. WHITE** (LUTON) LTD.

24/30, MANCHESTER ST.  
LUTON

**To-Day's Half-Time Scores****SECOND LIST**

A	NORWICH C.	v.	MANCH. CITY	.....
B	NOTTS. FOR.	v.	CHESTERFIELD	.....
C	PLYMOUTH	v.	BLACKBURN	.....
D	SHEFFIELD UN.	v.	FULHAM	.....
E	SOUTHAMPTON	v.	WEST HAM U.	.....
F	TOTTENHAM	v.	BURY	.....
G	WEST BROM.	v.	BRADFORD	.....
H	BOURNEMOUTH	v.	ALDERSHOT	.....
K	BRIGHTON & H.	v.	NOTTS. CO'TY	.....
L	BRISTOL ROV.	v.	NORTHAMPT'N	.....
M	CARDIFF C.	v.	TORQUAY U.	.....
N	EXETER CITY	v.	SWINDON T.	.....

**S.J. HAWKINS**  
STATION WORKS, FLITWICK, BEDS.

PHONE: FLITWICK 253

PNEUMATIC TYRED  
TRUCKS, TROLLEYS AND  
BARROWS  
for all trades

WHOLESALE AND RETAIL

Send for List L101 Post Free

**CYCLES &  
REPAIRS**

Get your new machine from

**S. A. LEWIS**

138, DUNSTABLE ROAD

LUTON

PHONE 807

Terms from

**2/-**  
Weekly

All kinds of  
repairs executed  
by experienced  
workmen



don't get wet!  
**GET A MAC**

(OR A RAINCOAT)

from

**MARES!**

Many famous makes in stock

Charles **MARES** Limited

GEORGE STREET, LUTON  
And at St. Albans

T  
O  
D  
A  
Y

**PALACE  
THEATRE**  
LUTON

T  
O  
D  
A  
Y

**Shirley Temple**  
— IN —  
**JUST AROUND the CORNER**

NEXT WEEK

NEXT WEEK

**Joe E. Brown** IN 'THE GLADIATOR'

(U)

Now is the time  
to select your  
Cricket Gear and  
Tennis Racket

The leading makes  
kept in stock

Rackets re-strung  
on the premises

DART BOARDS and  
DARTS a Speciality

Roller Skates and Boots  
in Great Variety

**G. A. WILD**  
AND SONS

Sports Outfitters

14, Manchester Street, Luton  
103, High Street N., Dunstable

BOOK AT  
**BAILEY'S**

FOR

LONDON COASTAL COACHES  
ALL INDEPENDENT SERVICES

JERSEY AIRWAYS

LONDON THEATRES

AND

AMUSEMENTS

Daily Services to all  
parts of Great Britain

TOBACCONIST  
AND BOOKING AGENT

38, NEW BEDFORD ROAD  
LUTON

Phone 1972

### LUTON TOWN

Shirts White  
Knicker Black  
Stockings Black with White Tops

Cden  
Goal

**King**  
Right Back

**Finlayson**  
Right Half

**Carroll**  
Outside Right

**Redfern**  
Inside Right

Referee—

**S. E. LAW**  
(West Bromwich)

**Osman**  
Outside Left

**Barker**  
Inside Left

**Forsyth**  
Left Half

**Williams**  
Left Back

### MILLWALL

Shirts Royal Blue  
Knicker White  
Stockings Royal Blue with White Hoops

**Yuill**  
Goal



### League—Division II

**Dunsmore**  
Left Back

**Roberts**  
Left Half

**Connolly**  
Inside Left

**Stephenson**  
Outside Left

Linesmen—

Blue Flag: K. D. EAMES (Watford)  
Red Flag: W. LING (Whittleford)

**Richardson**  
Inside Right

**Rawlings**  
Outside Right

**Daniels**  
Right Half

**Smith**  
Right Back

Kick-Off 3.15 p.m.

**J.W. GREEN'S**

PRIZE MEDAL

**BOTTLED BEERS**

"Bright to the last drop"

ON SALE IN ALL LICENSED BARS on the GROUND

J. W. GREEN LIMITED, The Brewery, LUTON

Telephone—Luton 3131

**CHEAP L.M.S. TRIPS**

EACH FRIDAY NIGHT

Luton Depart 9 p.m.

CARLISLE - 18/3

EDINBURGH 23/-

GLASGOW - 23/6

GET IT TODAY!

"HOLIDAYS BY L.M.S."

— ON SALE AT —

L.M.S. STATIONS, BOOKSTALLS,  
ETC.

MODERN  
FIREPLACES

HEATING  
APPLIANCES

Up-to-date Sanitary Fittings  
in White and Colours

For ARTISTIC WALLPAPERS

**CHARLES  
BIRD & SONS  
LTD.**  
COLLINGTON STREET  
LUTON

Telephone: Luton 1255/1256

For QUALITY PAINTS

"Triplex" Safety Glass  
Motor Screens (Fitted)

Makers of  
MIRRORS—SPLASH BACKS—GLASS  
SHELVES & GLASS FIRE SCREENS

**HARRY CANHAM**

Cardboard Box

Packing Case, Ply Box and

Crate Manufacturer

9a, MARKET HILL, LUTON

TELEPHONE 458

**WAKE UP YOUR LIVER BILE**

without Calomel—and you'll jump out of bed in  
the morning full of vim and vigour

YOUR LIVER should pour out  
two pints of liquid bile into  
your system daily. If it doesn't,  
your food doesn't digest. It just  
poisons your whole system. Gas  
bloats you up. You get constipated.  
You feel sour, sunk, and the  
world looks punk.

Laxatives help a little, but a  
mere bowel movement doesn't  
get at the cause. It takes those  
good old Carters Brand Little

Liver Pills to get these two pints  
of bile flowing freely and make  
you feel "up and up." Harmless,  
gentle, yet amazing in making bile  
flow freely. Ask for Carters Brand  
Little Liver Pills.

Stubbornly refuse anything  
else. 1/3 and 3/- at all  
chemists.

Listen to the Carter Radio Programme on Radio  
Luxembourg every Sunday at 1.15 a.m. and on  
Radio Normandy every Sunday at 2.45 p.m.

NOW ALSO IN  
**PENNYWORTHS**  
EVERYWHERE

— The only —

**'DISQUALIFICATION'**

that you are likely to suffer is  
by paying rent when you can

**BUY YOUR OWN HOUSE**

Full details of attractive terms from—

**LUTON & MIDLANDS  
BUILDING SOCIETY**

Telephone: Luton 1067

11, George St.  
West  
LUTON

**WEBDALE'S**

of WELLINGTON STREET

— FOR —

KITCHEN EQUIPMENT

AND ALL

HOUSEHOLD REQUIREMENTS

AT LOWEST PRICES

21 to 27, WELLINGTON STREET  
Phone 41 LUTON



## Charnley and Sons REGISTERED OPTICIANS

NATIONAL HEALTH  
INSURANCE

On the Official List of  
H.S.A. OPTICIANS

11, Wellington Street  
LUTON  
Telephone 1808

Over 50 years in the  
Printing Trade  
in Luton  
○○○○○

## W. F. BUNKER

WILL HELP YOU IN  
THE PRODUCTION  
OF YOUR PRINTING  
REQUIREMENTS

26a, CHAPEL STREET  
LUTON  
PHONE 224

## E. A. GREEN

BOOKSELLER  
NEWSAGENT  
STATIONER

*Luton's Most Progressive  
Circulating Library*

21a, New Bedford Road  
and 228, Biscot Road  
LUTON  
Telephone 476

## F. WHITE

BUILDER  
and  
CONTRACTOR

141,  
Stockingstone Road  
LUTON

—□—  
ALL CLASSES OF  
REPAIRS, PAINTING  
AND DECORATING  
UNDERTAKEN

Estimates Free

## To-Day's Half-Time Scores THIRD LIST

A	IPSWICH T.	v. CLAPTON O'	.....
B	WALSALL	v. BRISTOL CITY	.....
C	BARROW	v. HARTLEPOOLS	.....
D	BRADF'D CITY	v. CARLISLE UN.	.....
E	OLDHAM A.	v. YORK CITY	.....
F	STOCKPORT C.	v. DONCASTER	.....
3.30 p.m. KICK-OFFS			
G	CHARLTON A.	v. EVERTON	.....
H	CHELSEA	v. PORTSMOUTH	.....
K	MANSFIELD T.	v. CRYSTAL PAL.	.....
L	QUEEN'S P. R.	v. WATFORD	.....
M	SOUTHEND U.	v. PORT VALE	.....
N	BARNSELY	v. ROCHDALE	.....

## W. CHAMBERLAIN & Co.

Proprietors—  
A. M. Chamberlain  
R. Deadman

106, Dunstable Road  
LUTON

Best British Made  
Brushes and Brooms  
Enamel Ware

City of London  
White Lead Paint

Messrs Merrediths & Co  
Merlac Enamel Paints

Fadeless Wall Paper  
Ask for Pattern Books

—□—  
A TRIAL SOLICITED

## W. HOLES

3, Gordon Street, Luton  
Coal and  
Coke Merchant

Authorised Agent for  
Luton Gas Company's  
large and graded coke

Agent for  
L.M.S. Passenger Dept.

Telephone 210



TELEPHONE:  
LUTON 2126

## P. W. SMITH

Builder — Contractor  
High Class Decorator

418, DUNSTABLE ROAD  
LUTON



## LUTON BOBBERS STAND CLUB

President: P. W. Wright, Esq.

Vice-Chairman: E. G. Gibbs, Esq.

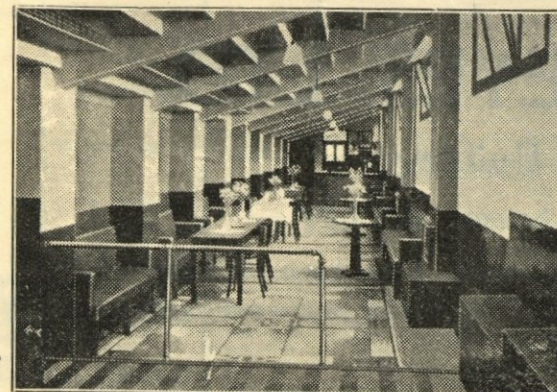
Hon. Secretary: Mr. A. C. Wright

Hon. Treasurer: Mr. J. Collier

Committee:

Messrs W. Banks, F. Cooper, A. Flitton,  
N. Lines, S. Setchell, R. G. Smith

TELEPHONE 2566



On Monday last, the Annual Meeting of the Club was held before a large attendance of Members. The three retiring Members of the Committee:—Messrs A. Flitton, F. Cooper and S. Setchell were again elected to the Committee. *In today's issue we must not forget to congratulate our Skittles Team on their wonderful performance in winning the Luton Skittles League on their first attempt. Well done lads,*

another step up for the Bobbers. Now supporters after you have enjoyed today's match with Millwall, call round to the Bobbers Stand Club and spend an enjoyable evening with us, we will give you a good time, every comfort, service and sportsmanship you will find to make the evening enjoyable.

~~~~~  
**PAY US A VISIT**

## THE CENTRAL RESTAURANT

20/22/24, CHEAPSIDE  
LUTON

○○○

SEATING FOR  
300

ESTABLISHED  
60 YEARS

Phone 172 and book a table  
and have your meal in comfort

WE CAN CATER FOR YOU  
ANYWHERE  
ANY TIME  
ANY NUMBER

## A. E. NICHOLLS

Wholesale  
CONFECTIONER & TOBACCONIST

CAN SUPPLY YOU WITH  
EVERYTHING YOU WANT  
FOR THE TOBACCO AND  
CONFECTIONERY TRADE  
AT LOWEST PRICES



Prompt Delivery and Civility

16, MILL STREET, LUTON

'Phone: Luton 902



## The Luton Builders

have the following houses TO LET

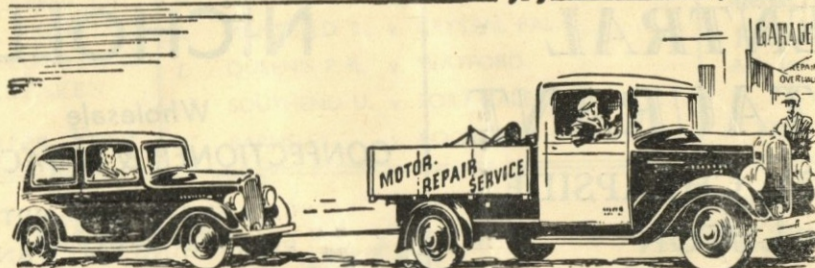
**Black Swan Lane—3 bedrooms**  
*Rent 16/6 per week inclusive*

Superior Villa in Humberstone Road  
Rent 19/- per week exclusive

Garages—Overstone Road, brick built with wash-down  
Rent 4/- per week inclusive

Apply  
17a, WINDSOR STREET, LUTON  
TELEPHONE 594

Don't let this happen to you!



GET A *Guaranteed* USED CAR  
from

# LUTON MOTOR Co., Ltd.

**BEECH HILL, DUNSTABLE ROAD, LUTON - 'Phone 15**

## Football League Division II — RESULTS AT A GLANCE

[illegible]



## FIXTURES, 1938 - 9

| FIRST XI    |    | Division II          |     | F. A. |     |
|-------------|----|----------------------|-----|-------|-----|
| Sat., Aug.  | 27 | West Bromwich Albion | ... | A     | 0 3 |
| Wed., "     | 31 | Newcastle United     | ... | 4 1 H | 2 1 |
| Sat., Sept. | 3  | Norwich City         | ... | 1 1 H | 2 1 |
| Mon., "     | 5  | Coventry City        | ... | 1 2 A | 0 1 |
| Sat., "     | 10 | Manchester City      | ... | A     | 2 1 |
| Sat., "     | 17 | Plymouth Argyle      | ... | 4 2 A | 1 4 |
| Sat., "     | 24 | Sheffield United     | ... | 2 3 H | 2 0 |
| Sat., Oct.  | 1  | Burnley              | ... | 2 3 A | 2 3 |
| Sat., "     | 8  | Tottenham Hotspur    | ... | 2 4 H | 0 0 |
| Sat., "     | 15 | Bradford             | ... | 4 2 H | 2 2 |
| Sat., "     | 22 | Swansea Town         | ... | 1 1 A | 3 2 |
| Sat., "     | 29 | Blackburn Rovers     | ... | 4 1 H | 1 1 |
| Sat., Nov.  | 5  | Tranmere Rovers      | ... | A     | 3 2 |
| Sat., "     | 12 | West Ham United      | ... | 2 2 H | 1 2 |
| Sat., "     | 19 | Bury                 | ... | 4 3 A | 5 2 |
| Sat., "     | 26 | Sheffield Wednesday  | ... | 2 2 H | 1 5 |
| Sat., Dec.  | 3  | Fulham               | ... | 1 4 A | 1 2 |
| Sat., "     | 10 | Chesterfield         | ... | 1 1 H | 5 0 |
| Sat., "     | 17 | Millwall             | ... | A     | 1 2 |
| Sat., "     | 24 | West Bromwich Albion | ... | H     | 3 1 |
| Mon., "     | 26 | Nottingham Forest    | ... | 0 1 A | 4 2 |
| Tues., "    | 27 | Nottingham Forest    | ... | 2 2 H | 1 0 |
| Sat., "     | 31 | Norwich City         | ... | 4 0 A | 1 2 |
| Sat., Jan.  | 7  | Liverpool (F.A. Cup) | ... | A     | 0 3 |
| Sat., "     | 14 | Manchester City      | ... | H     | 3 0 |
| Sat., "     | 21 | Plymouth Argyle      | ... | 1 1 H | 3 4 |
| Sat., "     | 28 | Sheffield United     | ... | 0 2 A | 2 2 |
| Sat., Feb.  | 4  | Burnley              | ... | 3 1 H | 1 0 |
| Sat., "     | 11 | Tottenham Hotspur    | ... | 0 3 A | 1 0 |
| Sat., "     | 18 | Bradford             | ... | 1 1 A | 1 2 |
| Sat., "     | 25 | Swansea Town         | ... | 5 1 H | 6 3 |
| Sat., Mar.  | 11 | Tranmere Rovers      | ... | H     | 3 0 |
| Thurs., "   | 16 | Blackburn Rovers     | ... | 2 2 A | 0 2 |
| Sat., "     | 18 | West Ham United      | ... | 0 0 A | 1 0 |
| Sat., "     | 25 | Bury                 | ... | 0 1 H | 2 1 |
| Sat., April | 1  | Sheffield Wednesday  | ... | 0 4 A | 1 4 |
| Fri., "     | 7  | Southampton          | ... | 1 3 H | 6 2 |
| Sat., "     | 8  | Fulham               | ... | 4 0 H | 2 1 |
| Mon., "     | 10 | Southampton          | ... | 6 3 A | 4 0 |
| Sat., "     | 15 | Chesterfield         | ... | 2 5 A | 2 1 |
| Sat., "     | 22 | Millwall             | ... | H     |     |
| Sat., "     | 29 | Newcastle United     | ... | 3 1 A |     |
| Sat., May   | 6  | Coventry City        | ... | 1 4 H |     |

## LEAGUE TABLES

## LEAGUE DIVISION II

|                     | Pld. | Won | Lost | Drn. | For | Agst. | P. |
|---------------------|------|-----|------|------|-----|-------|----|
| Blackburn Rovers    | 40   | 25  | 11   | 4    | 94  | 59    | 54 |
| Sheffield Wednesday | 39   | 19  | 10   | 10   | 84  | 57    | 48 |
| LUTON TOWN          | 39   | 22  | 13   | 4    | 81  | 61    | 48 |
| Sheffield United    | 38   | 17  | 8    | 12   | 58  | 40    | 47 |
| Coventry City       | 38   | 19  | 12   | 7    | 57  | 41    | 45 |
| Manchester City     | 38   | 20  | 13   | 5    | 91  | 68    | 45 |
| Chesterfield        | 38   | 18  | 11   | 9    | 61  | 47    | 45 |
| Tottenham Hotspur   | 39   | 18  | 12   | 9    | 62  | 52    | 45 |
| Newcastle United    | 40   | 17  | 13   | 10   | 58  | 46    | 44 |
| West Brom. A.       | 40   | 17  | 14   | 9    | 85  | 68    | 43 |
| Fulham              | 39   | 16  | 12   | 11   | 59  | 51    | 42 |
| West Ham United     | 39   | 15  | 15   | 9    | 66  | 51    | 39 |
| Millwall            | 40   | 13  | 14   | 13   | 62  | 52    | 39 |
| Burnley             | 40   | 15  | 16   | 9    | 48  | 52    | 39 |
| Bury                | 40   | 11  | 15   | 13   | 60  | 69    | 35 |
| Southampton         | 39   | 12  | 18   | 9    | 54  | 77    | 33 |
| Plymouth Argyle     | 38   | 12  | 18   | 8    | 44  | 53    | 32 |
| Bradford            | 40   | 11  | 19   | 10   | 57  | 80    | 32 |
| Swansea Town        | 39   | 10  | 18   | 11   | 45  | 74    | 31 |
| Notts Forest        | 39   | 9   | 19   | 11   | 47  | 79    | 29 |
| Norwich City        | 38   | 12  | 22   | 4    | 47  | 86    | 28 |
| Tranmere Rovers     | 40   | 6   | 29   | 5    | 38  | 95    | 17 |

## RESERVE FIXTURES London Combination F. A.

|             |    |                     |     |       |     |
|-------------|----|---------------------|-----|-------|-----|
| Sat., Aug.  | 27 | Brighton & Hove A.  | ... | 6 2 H | 2 1 |
| Mon., "     | 29 | Millwall            | ... | 0 3 A | 5 1 |
| Sat., Sept. | 3  | Bournemouth         | ... | 1 1 A | 3 1 |
| Wed., "     | 7  | Tottenham Hotspur   | ... | 0 2 H | 1 1 |
| Sat., "     | 10 | Watford             | ... | 2 0 H | 1 2 |
| Sat., "     | 17 | Southend United     | ... | 3 1 H | 4 0 |
| Mon., "     | 19 | Tottenham Hotspur   | ... | 3 5 A | 2 2 |
| Sat., "     | 24 | Queens Park Rangers | ... | 0 4 A | 0 1 |
| Wed., "     | 28 | Southampton         | ... | 2 0 A | 2 2 |
| Sat., Oct.  | 1  | Chelsea             | ... | 1 1 H | 2 1 |
| Wed., "     | 5  | Leicester City      | ... | 0 1 H | 6 1 |
| Sat., "     | 8  | Charlton Athletic   | ... | 0 4 A | 3 2 |
| Mon., "     | 10 | Leicester City      | ... | 1 4 A | 5 0 |
| Sat., "     | 15 | Fulham              | ... | 1 5 A | 1 3 |
| Sat., "     | 22 | Brentford           | ... | 0 0 H | 3 2 |
| Sat., "     | 29 | Arsenal             | ... | 0 1 A | 2 4 |
| Sat., Nov.  | 5  | Clapton Orient      | ... | 3 0 H | 5 0 |
| Sat., "     | 12 | Portsmouth          | ... | 0 0 A | 2 2 |
| Sat., "     | 19 | West Ham            | ... | 0 1 H | 2 1 |
| Sat., "     | 26 | Northampton Town    | ... | 1 1 A | 4 1 |
| Sat., Dec.  | 3  | Bristol City        | ... | 3 1 H | 3 1 |
| Sat., "     | 10 | Swansea Town        | ... | 1 0 A | 0 2 |
| Sat., "     | 17 | Crystal Palace      | ... | 6 1 H | 5 0 |
| Sat., "     | 24 | Brighton & Hove A.  | ... | 1 1 A | 0 3 |
| Mon., "     | 26 | Southampton         | ... | 2 1 H | 6 0 |
| Sat., "     | 31 | Bournemouth         | ... | 2 1 H | 5 0 |
| Sat., Jan.  | 14 | Watford             | ... | 2 3 A | 0 0 |
| Sat., "     | 21 | Southend United     | ... | 0 4 A | 1 1 |
| Sat., "     | 28 | Queens Park Rangers | ... | 2 2 H | 0 1 |
| Sat., Feb.  | 4  | Chelsea             | ... | 2 6 A | 0 2 |
| Sat., "     | 11 | Charlton Athletic   | ... | 2 0 H | 4 2 |
| Sat., "     | 18 | Fulham              | ... | 3 0 H | 3 1 |
| Sat., "     | 25 | Brentford           | ... | 0 3 A | 2 2 |
| Sat., Mar.  | 4  | Arsenal             | ... | 1 2 H | 0 1 |
| Sat., "     | 11 | Clapton Orient      | ... | 7 0 A | 1 2 |
| Sat., "     | 18 | Portsmouth          | ... | 1 2 H | 4 0 |
| Sat., "     | 25 | West Ham            | ... | 1 1 A | 1 2 |
| Sat., April | 1  | Northampton Town    | ... | 3 3 H | 0 0 |
| Fri., "     | 7  | Coventry City       | ... | 0 1 A | 1 2 |
| Sat., "     | 8  | Bristol City        | ... | 2 3 A | 3 2 |
| Mon., "     | 10 | Coventry City       | ... | 4 0 H | 3 1 |
| Sat., "     | 15 | Swansea Town        | ... | 1 1 H | 5 1 |
| Sat., "     | 22 | Crystal Palace      | ... | 3 1 A |     |
| Sat., "     | 29 | Millwall            | ... | 5 1 H |     |
| Wed., May   | 3  | Reading             | ... | 3 1 H |     |
| Sat., "     | 6  | Reading             | ... | 4 1 A |     |

## LONDON COMBINATION

|                     | Pld. | Won | Lost | Drn. | For | Agst. | P. |
|---------------------|------|-----|------|------|-----|-------|----|
| Arsenal             | 43   | 29  | 8    | 6    | 134 | 51    | 64 |
| Queens Park Rangers | 42   | 25  | 7    | 10   | 106 | 53    | 60 |
| Coventry City       | 42   | 25  | 12   | 5    | 109 | 51    | 56 |
| LUTON TOWN          | 42   | 22  | 12   | 8    | 102 | 54    | 52 |
| West Ham United     | 42   | 23  | 13   | 6    | 112 | 76    | 52 |
| Chelsea             | 43   | 20  | 12   | 11   | 81  | 62    | 51 |
| Brighton & Hove A.  | 44   | 22  | 15   | 7    | 75  | 62    | 51 |
| Brentford           | 43   | 21  | 15   | 7    | 101 | 75    | 49 |
| Tottenham Hotspur   | 42   | 19  | 15   | 8    | 89  | 57    | 46 |
| Southend United     | 43   | 16  | 14   | 13   | 76  | 64    | 45 |
| Watford             | 44   | 17  | 16   | 11   | 75  | 83    | 45 |
| Crystal Palace      | 44   | 19  | 19   | 6    | 93  | 89    | 44 |
| Portsmouth          | 43   | 15  | 16   | 12   | 77  | 79    | 42 |
| Millwall            | 43   | 14  | 16   | 13   | 71  | 80    | 41 |
| Swansea Town        | 44   | 17  | 20   | 7    | 63  | 102   | 41 |
| Leicester City      | 45   | 17  | 23   | 5    | 81  | 107   | 39 |
| Bournemouth         | 43   | 11  | 18   | 14   | 70  | 83    | 36 |
| Charlton Athletic   | 42   | 12  | 19   | 11   | 56  | 70    | 35 |
| Fulham              | 42   | 13  | 21   | 8    | 55  | 85    | 34 |
| Bristol City        | 44   | 14  | 25   | 5    | 78  | 127   | 33 |
| Southampton         | 42   | 11  | 23   | 8    | 67  | 102   | 30 |
| Reading             | 42   | 10  | 22   | 10   | 67  | 120   | 30 |
| Northampton         | 43   | 11  | 24   | 7    | 67  | 109   | 29 |
| Clapton O.          | 43   | 9   | 26   | 8    | 50  | 114   | 26 |

# Edward Martell

## & Co., Ltd.

TELEPHONE

896-7

Coal and Coke Merchants

ESTABLISHED  
1879

24, UPPER GEORGE STREET, LUTON

### Burn "Hucknall" Ashless Coal

### It Scores Every Time!!

Popular Price! Saves Labour!! Great Heat!!!

WHY NOT TRY IT?

## CARRY ON

## LUTON TOWN!

a packet of  
SWEET  
**ROSEMARY**  
TOBACCO

is always enjoyable

## W. & F. FAULKNER

## LONDON

BRANCH OF THE IMPERIAL TOBACCO CO.  
(OF GREAT BRITAIN AND IRELAND), LIMITED

SEE that you "SEE"  
all of the game  
comfortably,

if you cannot do so  
CALL AND SEE

## A. G. PRATT

M.P.S., F.S.M.C.

CHEMIST AND OPTICIAN

169, DUNSTABLE ROAD, LUTON  
(Corner Kenilworth Road)

Recognised by the O.B.A.C. for  
National Health Insurance Benefit

PHONE 708



# BOYS' CYCLES

BY ALL  
THE  
LEADING  
MAKERS

00000

EASY  
TERMS



NEW HUDSON JUVENILE  
Model G24 £4 8s. 6d.

— Ask for Special List —

*A. G. Partridge & Co*  
PHONE 234 10-12 CHAPEL ST. LUTON

*You need*

**EASY-RUNNING  
& RELIABILITY**



NO CYCLE IS  
COMPLETE  
WITHOUT THE  
FAMOUS STUR-  
MEY - ARCHER  
3-SPEED GEAR.

*in the Country!*

MODELS FROM £5:10:0 CASH

(Sturmey-Archer 3-speed gear 21/- extra, cash)

Deferred Terms from

5/- down and 12 equal monthly payments (from 10/7). Sturmey-Archer 3-speed gear 2/1 extra, monthly. Call for "The Book of the Raleigh."

**RALEIGH**  
THE ALL-STEEL BICYCLE

Printed by E. A. Allen, 424, Dunstable Road, Luton. \*Phone 1626.

Published by Luton Town Football and Athletic Co., Ltd., Kenilworth Road, Luton.