

Season 1938-39.

# SOUTHAMPTON

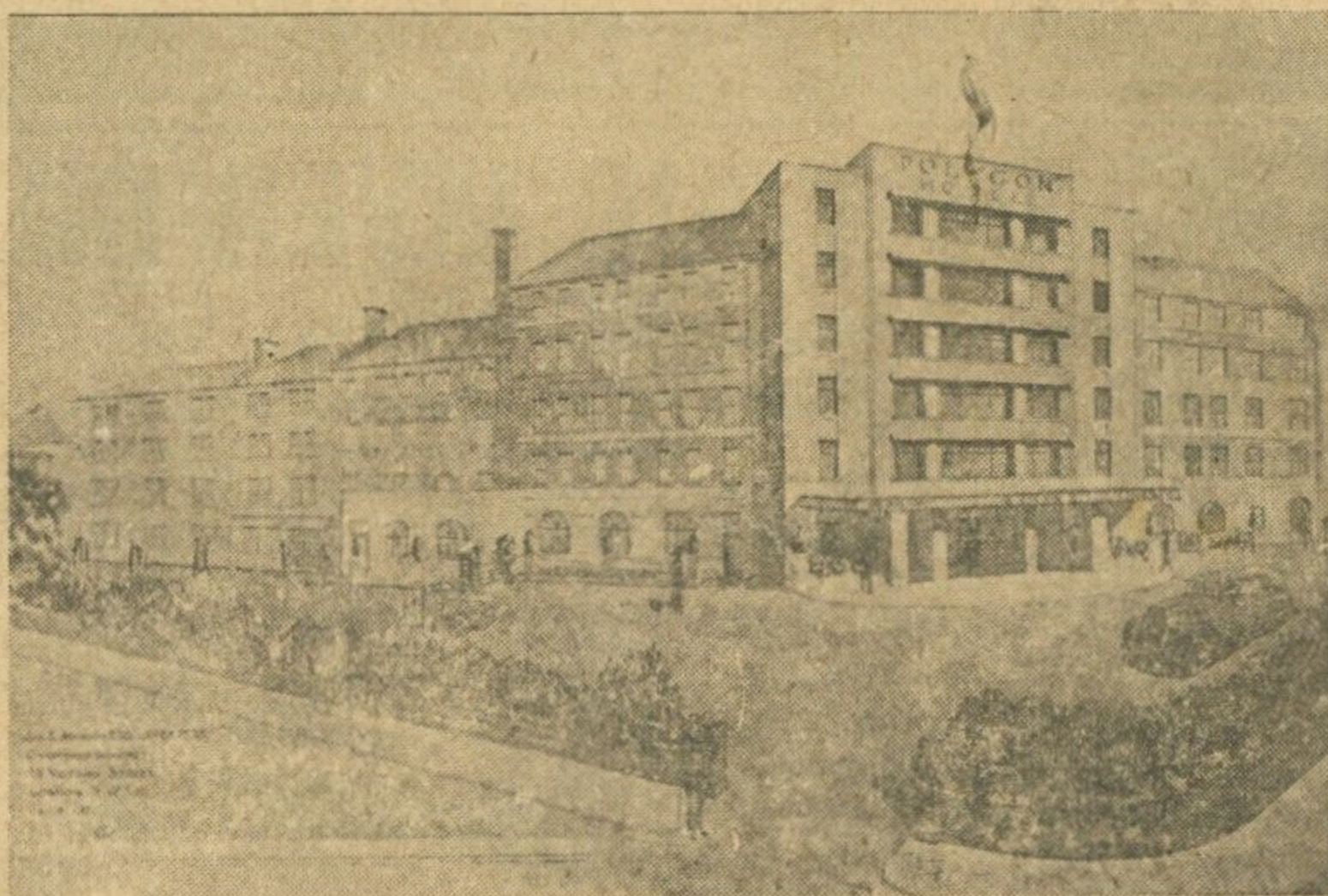
Football & A. Co., Ltd.

OFFICIAL PROGRAMME - PRICE 2<sup>d</sup>.

## The POLYGON

SOUTHAMPTON'S SUPER-LUXURY HOTEL.

At Moderate Charges.



### Hotel Resident Dance Band

SILVER GRILL - Open until 12 o/c midnight.

**P**ERFECT CUISINE. **B**EAUTIFUL BEDROOMS. **C**OCKTAIL BAR.  
**S**ERVICE. **B**ATHROOMS. **A**mple Parking & Garage.

**E**very Wednesday and Saturday - Tea Dances.  
**E**very Saturday - Dinner Dances (Evening Dress essential).

**PHONE** Southampton 5061.



# Something like Protection!

Just as a good goalie is essential if your team is going to avoid giving points away, so is a good paint essential if you wish to avoid depreciation of your property. That's why P.J. Paints were used for the protection and decoration of Southampton F.C. buildings and the great West Stand. Write to the address below or 'phone Southampton 5312 for details—there's a material for every decorative or industrial job.



**TO PROTECT YOUR PROPERTY  
SPECIFY PINCHIN, JOHNSON PAINTS**

PINCHIN, JOHNSON & CO. LTD. 41, LOWER CANAL WALK, SOUTHAMPTON

## WAKE UP YOUR LIVER BILE

*without Calomel — and you'll jump out of  
bed in the morning full of vim and vigour*

**Y**OUR LIVER should pour out two pints of liquid bile into your system daily. If this bile is not flowing freely, your food doesn't digest. It just decays inside you. Gas bloats up your stomach. You get constipated. Your whole system is poisoned and you feel sour, sunk, and the world looks punk.

Laxatives help a little, but a mere bowel movement doesn't get at the cause. It takes those good old Carters Brand Little Liver Pills to get these two pints of bile flowing freely and make you feel "up and up." Harmless, gentle, yet amazing in making bile flow freely.

Ask for Carters Little Liver Pills. Stubbornly refuse anything else. 1/3 and 3/- at all chemists.

Listen to the Carter Radio Programme on Radio Luxembourg every Sunday at 11.15 a.m. and on Radio Normandy every Sunday at 2.45 p.m.

**NOW ALSO IN  
PENNY WORTHS  
EVERYWHERE**

## Southampton Football & Athletic Co., Ltd.

Founded in 1885.

MEMBERS of FOOTBALL ASSOCIATION; HAMPSHIRE F.A.;  
FOOTBALL LEAGUE, DIV. II; LONDON COMBINATION.

### DIRECTORS:

*President:* MAJOR R. C. H. SLOANE STANLEY, D.L., J.P.

*Chairman:* J. R. SARJANTSON.

W. PENN BARROW.

H. H. G. BLAGRAVE.

J. CORBETT.

C. J. COSGROVE.

C. F. HOSKINS.

A. E. JUKES.

G. E. H. PRINCE.

B. H. RANSOM.

*Secretary-Manager:* T. R. PARKER.

*Asst. Secretary:* B. C. BUSH.

*Trainer:* H. W. COPE.

*Reg. Office and Ground:* The Dell, Southampton.

Southampton 4519.

**Southampton v. LUTON TOWN • F.L. • 10th April, 1939**

NOTE.—The Editor regrets that time alone prevented the changing of the whole of the text of Saturday's Programme for to-day, but this has been done as far as possible and where necessary.

## Club Chatter.

It was a very happy party returning from Swansea last Saturday night, for not only had they registered their fourth away victory, but they had won it well. Early on in the game, Bamford, always a good centre-forward, scored a goal for Swansea, but four minutes later, all within the first quarter of an hour, Bevis had registered his first goal. Chalk by this time had settled himself down to the faster Second Division game, and he can look back upon his debut with satisfaction. Bevis continued to harass the Swansea defence, all to good purpose, for he went on to register his first "hat trick" in first-class football. We hope it will be the forerunner of many more such enterprising efforts. During the first half the ball did not run kindly for our opponents, but our defence fought extremely well and are to be congratulated on their covering and solidarity. The second half found us really on top of our game, and on two occasions more steadiness would have resulted in further goals. This was the fourth time we had successfully visited Vetch Field and brought away both points: the last time was on Christmas Day, 1934, when we won by the only goal of the match.

With the Reserve team idle, a strong team represented the "A" team versus Newport at Netley. As at Swansea, the half-time score of 3 goals to 1 stood the same at the final, but in this case the "A" team were the losers. It was a disappointing game and a most disappointing result. Kelly was the goalscorer.



This week our congratulations go out to the "B" team lads, for, waiving ground rights in their match v. Glendale, they won by four goals to nil, and thereby assured themselves of winning the Sixth Division in their first season together. There are some very promising youths in this side and supporters will have the opportunity of seeing the lads for themselves next Saturday, when they play off their Southampton Junior Cup Final v. Millbrook O.S., kick-off 2 o'clock, prior to the London Combination game against Arsenal Reserves. No additional charge to the usual Reserve prices is being made, so that a good crowd should attend to witness these two very attractive fixtures.

. . . . .

From the Football Association comes a letter marked "Urgent," and it is essential that all persons with any thought of self-preservation should carefully read the following few lines. We, as a football organisation, are asked to do our share towards broadcasting news regarding National Service, and among you there are undoubtedly a number of young, healthy and able men and women who should be only too pleased to join one of the many outlets of National Service. Of course, primarily for the men, come the Territorial Forces, including Balloon Barrage and Anti-Aircraft Brigades; then membership of the A.R.P., under Captain Phillips, of 119, High Street, Southampton; Auxiliary Fire Service, under Captain Hayward, of the Fire Station, St. Mary's, Southampton; and the Special Constabulary, controlled by the Chief Constable, Mr. J. T. McCormac, Civic Centre, Southampton, are next in need of willing recruits. You should find out for yourselves from any of the above-mentioned gentlemen, who will be only too pleased to supply particulars of the various Services and whether you are eligible for any particular Service. Any further advice can be sought at the local National Service Headquarters, c/o Ministry of Labour, Millbrook Road, Southampton. The women-folk can help also: either by joining the Auxiliary Training Services, which encompass Infantry and Air Force, or an Air Raid Precautions Unit or the Auxiliary Fire Service. I am sure some of our supporters have enrolled, but why not persuade your friends to do likewise? Amongst our supporters there are undoubtedly a number who would like to join but for some reason are backward in securing particulars. To those I would say your requests and enquiries will be met with all due deference and courtesy from any of the local officials. To those who find any of the aforementioned addresses too far from home, call in at the local district A.R.P. Office, where they can do all the necessary advising.

*J. R. Parker*

## Wise and Otherwise.

A Referee is a judge from whom there is no appeal. His decisions are given in the shortest time possible after the act. He is given no opportunity for reflection. Ponder this, O noisy critic!

\* \* \* \* \*

A policeman had just caught a Welsh motorist exceeding the speed limit in his car. "Name and address, please?" he demanded. "Aubrey Llewellyn Af Brynmor," replied the motorist, "of Llanethly House, Llandrindod Wells." The policeman put away his notebook, and looked sternly at the offender. "Well, don't let me catch you again," he said.

\* \* \* \* \*

Goodwill toward men. We accept its manifestations every day, often without giving them a second thought. Our homes, our loved ones, our health, our pleasant relations with our fellows, our national felicity—all those things which make life beautiful and pleasant—we take them for granted, seldom realising that they are the outcome and expression of God's goodwill toward men.

\* \* \* \* \*

The landlord was chatting to some visitors when old Jake entered the inn. "Meet Jake Brown," said the landlord, "he's one of our regular customers. Eighty-five years of age, and he has never been outside the village." Jake shook hands with the visitors. "Sorry I'm late," he apologised, "but I lost my way."

\* \* \* \* \*

The two schoolboys were writing their weekly letter home. "I say, old man," said one, "how do you spell 'embarrassed'?"

The other told him, and added absent-mindedly, "Financially has two 'I's.'"

\* \* \* \* \*

Australian spiders are mighty tough, especially Queensland spiders. It is stated on good authority that a young, foot-long snake has been found tangled in the web of one of the dreaded satiny black spiders. Snake's head had been tied to its tail with dozens of thick silk threads.

\* \* \* \* \*

Producer: "I sacked the whole orchestra last night." "Why?" "They absolutely spoilt the big scene. Remember the scene where the judge condemns the hero to death? Well, I told the leader to pick out a suitable tune." "Yes?" "When the judge put on the black cap the darn fools played 'Where did you get that hat?'"





**STOPS**

*Muffled Pinking*

TO LET

FOR

**FLORAL DECORATIONS**

**FRED BAILEY**

78 ABOVE BAR  
SOUTHAMPTON

**CHOICEST FLOWERS & FRUITS**

Telephones 2522 and 2787

## To-Day at the Dell.

Nobody who saw the match with Luton in October, 1937, when they defeated us by six goals to three at the Dell, will ever forget the display of football shown by both sides that afternoon. Harry Osman, now with Millwall, scored a hat-trick, but all to no avail, for the Luton forwards were certainly in a rampant mood that day and we had little answer to their continued attack. However, we returned compliment for compliment, for at Luton we pulled off a remarkable three goals to one victory.

The six matches played up to the time of writing have resulted—

<i>Home.</i>	F. A.			<i>Away.</i>	F. A.
1—1		1920/21	3rd Div. (S.)	1—1	
2—1		1921/22	3rd Div. (S.)	0—0	
3—6		1937/38	2nd Div.	3—1	

and once in a Cup-tie (First Round) we defeated them by three goals to nil at Southampton, in the first year of the Great War.

The club was formed with the fusion of Luton Wanderers and Luton Excelsior in 1885, and is credited with being the first club in the South to pay wages to players. This was in 1890. Seven years later they became members of the Second Division, but after only three seasons returned to the Southern League, and from 1900/1, until the formation of the Third Division in 1920/21, were our regular opponents in Southern League games. They were runners-up for the title in 1906/7. Then for seventeen seasons they battled on to secure promotion to the Second Division, eventually heading Notts County and Brighton and Hove in a tight finish.

On four occasions have they played in different colours: originally the shirts and caps were navy blue and pink halves—the minutes record where both shirt and cap had to be worn on the field—and four years after their formation they changed to “cochineal.” On the return to the Southern League in 1900 the colours were once more altered, this time to sky blue with white knickers, and on becoming members the present strip was adopted.

Kenilworth Road enclosure has been the home of Luton Town F.C. since the club's formation, and for the visit of Aston Villa in the Second Division, 25,349 attended for a League game, a figure that has only once been topped, and that for a Fourth Round F.A. Cup-tie v. Swindon Town when 25,746 spectators were present.

Although many well-known players have donned their shirts, perhaps one of the more recent players, A. Rennie, was the best known. Jas. McEwen, F. W. Kean, H. Galbraith, J. Blessington, Thos. McInnes and D. Allsopp were also connected with the club during their careers.



Help yourself by helping us. When you visit The Dell, don't forget to subscribe to the BALL and SEASON TICKET. Either may be yours for the modest subscription of One Penny.

"To help — not to hinder."

# SAINTS' SUPPORTERS' CLUB.

Founded 1926.

Enjoy yourself by patronising our SOCIAL EVENTS. Watch for announcements in the space at the bottom of this advert. If in doubt, consult an official or a committee-man.

Hon. Gen. Secy.:  
J. W. Grant,  
6, Fawley Road,  
Regents Park, Southampton.

Hon. Treas.:  
W. W. Wood.

President:  
J. Angus Harman, Esq.

Chairman:  
F. A. Hill.

Vice-Chairman:  
A. Ward.

Hon. Social Sec.:  
B. Paget.

Hon. Registration Sec.:  
T. Perree,  
20, Kenilworth Road,  
Southampton.

2/- Life Membership. **JOIN AT ONCE.** Life Membership 2/-

Ladies may join. This will entitle you to a Club Badge and Book of Rules. Ladies may join.

Join the Saints' Supporters' Club Savings Association.

Communicate with Mr. B. Paget, Hon. Social Secretary,  
16, Kingsfield Road, Southampton, for particulars.

## "B" Team Fixtures.

1938.						1939.					
Sept.	3—Woolston St. Mark's	h	8	0		Jan.	7—Kennedy's Sports	h	13	0	
"	10—Kennedy's Sports	a	29	0		"	14—Shirley Labour	a	16	0	
"	17—Shirley Labour	h	14	0		"	21—Bursledon Rovers				
"	24—Warren Social	a	8	0			(S.J.C.)	a	3	0	
Oct.	1—S'hampton Squires	h	18	0		"	28—S'hampton Squires	a	20	1	
"	8—Bursledon Rovers	h	2	0		Feb.	4—Bursledon Rovers	a	3	0	
"	15—Merton (S.J.C.)	a	5	3		"	11—Ferry Engine Co.	h	2	0	
"	22—Ferry Engine Co.	a	1	1		"	18—Warren Social	h	15	0	
"	29—Glendale	a	5	1		"	25—Crampmoor Sports	a	4	2	
Nov.	5—F'ship of S. Andrew					Mar.	4—Highbury Sports				
	(H.J.C.)	a	1	2			(S.J.C., S-F.)	h	3	2	
"	12—Ascension (S.J.C.)	h	8	1		"	11—King's Park	h	11	0	
"	19—Crampmoor Sports	h	7	1		"	18—Woolston St. Mark's	a	9	0	
"	26—Taplin's Sports	h	11	0		"	25—Shirley Warren	a	1	0	
Dec.	3—5/7 Hants Regt.	h	9	0		April	1—Glendale	h	4	0	
"	10—King's Park	a	13	1		"	8—Shirley Warren	h			
"	17—Taplin's Sports	a	12	0		"	15—*Millbrook O.S.				
"	31—Old Issonians (S.J.C.)	a	8	0			(S.J.C., FINAL)				
						"	22—5/7 Hants Regt.	a			

\*At the Dell.

## Supporters' Club Notes.

GATE FORECAST COMPETITION.—Southampton v. Bradford, 25th March, 1939: official attendance, 9,679. First prize £5/0/0, Mr. F. Hope, 37, Kent Road, St. Denys, Southampton (9,673); second prize, £3/0/0, Mr. Fogg, 63, St. Mary's Road, Southampton (9,670); third prize, £1/0/0, Mr. H. Slender, 65, Edward Avenue, Basingstoke (9,650).

SPECIAL.—Members of the Supporters' Club and other followers of the Saints should make a great effort to get to the Dell on Saturday, 15th April—and early, too! Preceding the match with Arsenal Reserves, the Saints' supporters' own ("B") team will be on view in the Southampton Junior Cup Final against Millbrook—kick-off 2 p.m. The "B" team, in its first season, has a wonderful record. Besides getting to the Final of the Junior Cup, they have the Championship of their League in their grasp. Here is their record:—Matches played 30, won 28, drawn 1, lost 1. Goals for 263, against 15. S. Barinaga, the young Basque player (centre-forward), has scored 57 goals. Another Basque player in the team is Perez, the goalkeeper. Other prolific goal-getters are W. Stroud (captain) 37 goals, D. Prince 45, O'Connor 29, Welch 19, Veck 14, Mintram 14, Pickering 12. The team, as a whole, are a wonderful combination and a credit to Southampton. Therefore show your appreciation by coming along to the Dell on the 15th, and don't forget to give the Supporters' "cubs" the "big hand."

SUPPORTERS' CLUB VISIT ANDOVER.—At the invitation of the Andover Supporters' Club, our club paid them a visit on the 30th March. Accompanying the party were Mr. J. R. Sarjantson (Chairman Southampton F.C.), Manager Tom Parker, and the Chairman and Hon. Gen. Sec. of the Saints' Supporters' Club. Mr. Sarjantson had been advertised to talk on "The Help and Value of a Supporters' Club," but unfortunately, the meeting had to be abandoned owing to the meagre attendance of 15! This, indeed, was very regrettable, especially in view of the helping hand Southampton intended to give Andover, which would have been for the benefit of Soccer fans there besides the Andover F.C. Notwithstanding all this, we feel sure Mr. Sarjantson, as well as Mr. Parker, will be prepared to visit Andover again as soon as they get the word that they will get a better reception.

THE LATE MR. G. H. MUIR.—Members of the Saints' Supporters' Club deeply regret the passing of Mr. Muir. He took a great interest in our club. It will be remembered that he took the chair at the inaugural meeting of the Supporters' Club which was held in 1926 at the Chantry Hall, which stands on the St. Mary's Deanery Ground of which he knew so much, especially in his early days.



# TO ALL HUSBANDS

Have YOU ever promised your wife that you would have your photograph taken, and then put the matter off until it has been forgotten? Why not redeem that promise this week, and give her a pleasant surprise? She won't ask you because she knows you hate the idea.

Have a good

## CHANDLER

Portrait taken.

The best you can possibly get, and they are not expensive.

Studio: 11, Commercial Road, Southampton.

OFFICIAL PHOTOGRAPHERS to the SOUTHAMPTON FOOTBALL CLUB

### SAINTS' LIST OF PROFESSIONALS, 1938-39.

NAME.	BIRTHPLACE.	POSITION.	HEIGHT.		WEIGHT.	
			FT.	INS.	ST.	LB.
Bates, A. J. W.	Swindon	Goal	5	11	11	9
Stansbridge, L. E. C.	Southampton	Goal	5	11½	12	10
Warhurst, S. L.	Nelson, Lancs.	Goal	5	10½	11	0½
Browning, D. A.	New Milton	R.B.	5	9	11	12
Henderson, D.	Southampton	R.B.	5	9½	10	10
Perfect, F. T.	Gorleston	R.B.	5	8	12	4
Williams, F. A.	Nottingham	R.B.	5	8½	11	8
Emanuel, T.	Treboeth, Swansea	L.B.	5	8½	11	8
Noyce, L. A.	Southampton	L.B.	5	10	10	7
Wilkinson, C. E.	Sheffield	L.B.	5	9	10	10
Woodford, G. A.	Lymington	L.B.	5	10½	11	2
Cutting, S. W.	Salhouse, Norfolk	R.H.B.	5	8½	10	13
King, C. W.	Plymouth	R.H.B.	5	11½	13	3
Smith, G.	Portsmouth	W.H.B.	5	6½	10	9
Webber, E. V.	Portslade	W.H.B.	5	11½	11	1
Affleck, D. R.	Coyton	C.H.B.	6	0	13	4
Carnaby, T. E.	Ishaballe, Durham	C.H.B.	5	11½	12	0
Scott, J. R.	Grimethorpe	C.H.B.	5	10	12	10
Chalk, N. W.	Bitterne, S'hampton	C.H. or L.H.B.	5	10½	11	0
Brophy, H. R.	Leicester	L.H.B.	6	0½	12	12
Hill, F. R.	Forfar	L.H.B.	5	6	11	0½
Bevis, W.	Warsash	O.R.	5	5	9	11
Kelly, G.	Sunderland	O.R.	5	6½	11	6
Bates, E. T.	Thetford	I.R.	5	8½	10	9
Griggs, P. R.	Sholing	I.R.	5	5	10	8
Parkin, R.	Crook, Co. Durham	I.R.	5	9½	12	6
McGibbon, D.	Hamble	C.F.	5	8½	10	9
Tomlinson, R. W.	Mareham-le-Fen	C.F.	5	10½	14	2½
Bowden, O.	Newcastle	I.L.	5	9	11	9
Briggs, F.	Rotherham	I.L.	5	7½	10	6½
Holt, A. G.	Southampton	I.L.	5	8½	11	0
Wall, A. J.	Kirkby-in-Ashfield	I.L.	5	6	10	8
Clarke, W. H.	Leicester	O.L.	5	6	9	10½
Laney, L. C.	Southampton	O.L.	5	7	9	10½

## Finding the Local Player.

By T. R. Parker.

During the course of a football season we receive numerous reports of promising young players: quite a number come from Sotonians who have left the town, others from friends and well-meaning supporters. You will readily agree it is an impossible task to take every player we have recommended to us, but you can be assured we endeavour to follow up *every* recommendation. A "scout" will watch the player in one of his own team's matches, and should this club representative not be satisfied with one match, the player would be watched once more. If, in the opinion of the "scout," the boy may develop to something better, the Secretary of his club is approached. Permission may or may not be given to approach the player, but should it be given, the youth then has the opportunity to follow what is becoming a very popular career. Arrangements are made for early training, and possibly, if the player is following an apprenticeship in some trade, he will be allowed to continue and train during the evenings.

I will give you a few of the difficulties a professional club is faced with, which will be actual facts and experiences I have had in my short career as a Manager.

You may be aware that it is in contravention to the Rules of the Football Association that a player or an official of one club may act as an agent or "scout" for another club; but we find this rule is often broken, and more often by people who recommend players to professional clubs. Not always are such recommendations made for the player's own good; they are made more often with the hope of feathering the nest of the informant, and from experiences the two worst types are the ex-professional and the free-lance scout. The ex-professional type are the more difficult to deal with, but they are not so numerous; generally this man makes connections with the lad's parents at first, fills them up with plausible tales of what he will and can do for their son, if only they will let him have control of his football career. The parents, not knowing a great amount concerning the inside of football, and thinking an ex-player would be the finest judge to help their son along in his career, agree to the suggestion, and persuade the boy to put himself absolutely in the man's control. The ex-pro gets busy on the boy; drives home to the youth that he must not sign any form without first asking his mentor's advice, and more often than not the boy is filled with tales of pitfalls connected with the signing of certain forms. He soon gets the boy's solemn promise that only on his advice, and

(Continued on page 15).



# VISIT COOPERS HOUSES

ASK FOR  
**AMBER  
ALE**

Referee—MR. L. BROWN (Barnes).

Linesmen—Mr. F. T. Barton (Ealing) and C. J. Wackley (Somerton)  
(Flag with Blue Stripe) (Flag with Red Stripe)

## SOUTHAMPTON.

Red and White Stripes; Navy Blue Knicks; Blue Stockings with Red and White Tops

*Right Wing*

WARHURST (1)

*Left Wing*

PERFECT (2)

EMANUEL (3)

PARKIN (4)

CHALK (5)

BROPHY (6)

BEVIS (7)

BATES, E. T. (8)

TOMLINSON (9)

BRIGGS (10)

HILL (11)

STEPHENSON (12)

CONNELLY (13)

BILLINGTON (14)

REDFERN (15)

CARROLL (16)

ROBERTS (17)

DREYER (18)

FINLAYSON (19)

DUNMORE (20)

KING (21)

*Left Wing*

COEN (22)

*Right Wing*

## LUTON TOWN.

White Shirts, Black Collar and Cuffs; Black Knicks; Black Stockings, White Tops

ASK FOR  
**OAK  
ALE**

# SOUTHAMPTON'S BREWERS



## Developing and Printing

I develop and print a  $3\frac{1}{2} \times 2\frac{1}{2}$  film for

1/- post  
free.

Cameras bought, sold, and exchanged.

STOCKIST OF

ZEISS VOIGTLANDER  
KODAK SIEMENS  
PATHE AGFA, etc.,

and all Films, Camera, and Cine Supplies.

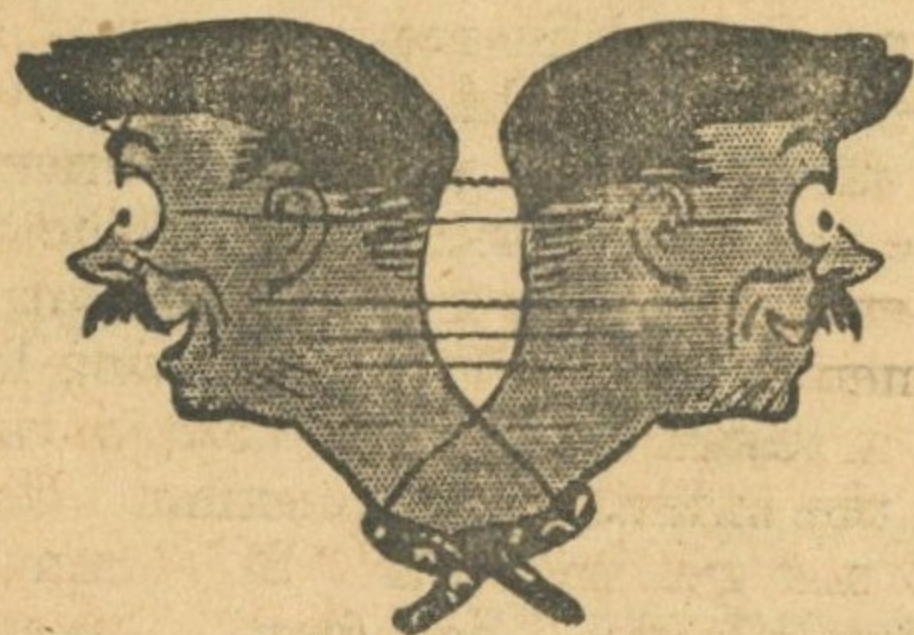
**W. MARTIN,**  
PHOTOGRAPHIC CHEMIST,  
**SOUTHAMPTON**

(OPPOSITE G.P.O.).

Phone—  
2719.

Grams—  
"Martin, Chemist, Southampton."

**CRIKEY!**



**THAT'S SHELL—THAT WAS!**

**YOU CAN BE SURE OF SHELL**

## League Tables.

### Football League, Div. II.

Including Results of Matches  
played Monday, 3rd April, 1939.

	P.	W.	D.	L.	Goals		Pts.
					F.	Ag.	
Blackburn	36	22	4	10	86	53	48
Sheffield W.	34	18	7	9	77	50	43
Newcastle	37	17	9	11	57	41	43
Sheffield U.	35	15	12	8	51	39	42
Chesterfield	35	17	8	10	56	43	42
Coventry	34	17	6	11	51	39	40
West Brom.	35	17	6	12	83	64	40
Luton	35	18	4	13	68	57	40
Fulham	34	15	9	10	52	41	39
Tottenham	35	15	9	11	57	49	39
Manch. City	34	17	4	13	82	67	38
Burnley	37	14	9	14	45	47	37
West Ham	35	13	9	13	62	46	35
Millwall	36	11	12	13	57	49	34
S'hampton	35	12	8	15	50	62	32
Bury	36	11	10	15	57	62	32
Plymouth	34	12	7	15	42	48	31
Bradford	36	10	10	16	54	73	30
Swansea	34	8	10	16	42	58	26
Norwich	34	10	3	21	41	83	23
Notts Forest	35	7	9	19	42	78	23
Tranmere	36	5	5	25	35	90	15

### London Combination.

Including Results of Matches  
played Monday, 3rd April, 1939.

	P.	W.	D.	L.	Goals		Pts.
					F.	Ag.	
Arsenal	39	26	5	8	127	47	57
Q. P. R.	39	24	9	6	100	47	57
Coventry	38	23	4	11	102	46	50
Brentford	39	21	7	11	99	68	49
Brighton	41	21	7	13	70	53	49
Luton	38	19	8	11	90	48	46
Chelsea	38	19	8	11	72	53	46
West Ham	37	19	5	13	97	70	43
Tottenham	38	18	6	14	84	52	42
Watford	40	16	10	14	68	74	42
Southend	39	14	13	12	69	55	41
Millwall	40	14	11	15	68	76	39
Swansea	41	16	7	18	60	94	39
Leicester	42	17	5	20	80	98	39
Crystal Pal.	40	16	6	18	85	85	38
Portsmouth	39	13	11	15	69	76	37
B'm'th & B.	40	11	13	16	67	78	35
Charlton	38	12	8	18	53	66	32
Bristol City	41	13	4	24	73	123	30
Fulham	38	10	8	20	49	82	28
S'hampton	37	9	8	20	56	91	26
Reading	39	8	10	21	64	117	26
N'thampton	39	9	7	23	63	104	25
Clapton O.	40	8	8	24	48	110	24

FINDING THE LOCAL PLAYER—continued from page 11.

his advice alone, will he act, and from now onwards the ex-pro has a definite advantage over other agents or "scouts." He will get into touch with an old acquaintance who is in the management or coaching in football and offer the lad for trial. A trial would be given, for the Manager approached would realise that an ex-player would not recommend another player who is not good enough. After the trial the Manager seems very pleased he has been able to find such a promising youth and explains he would like to sign him on forms. Here the trouble is most likely to start; invariably the boy will withhold his signature until he has consulted his advisor, and in the meantime the ex-player would be asking what he would get out of the deal. If the reply is not satisfactory to him, he would "auck" (for it is no better than auction) the player round to other clubs, singing the player's praises more than ever before, and in endeavours to hurry proceedings would say other managements are interested. One of the clubs approached may satisfy the ex-pro's requirements and then he would advise the youth to sign forms, *but not before*.

In the past seasons this club has been very just to all ex-Saints players, and gave them the privilege of watching the lads who now have taken their places without cost to themselves. It has become known to us that certain of these privileged spectators are behind the moves of youths from the Southampton area to other clubs, and in consequence of this abuse of privilege I may say my Directors are seriously considering removing this privilege another season.

On the other hand, we have a real friend who is mildly interested in a small junior club in the town; he and his team have nothing to gain and everything to lose in recommending his best players to this club. But that man prefers to act in a very gracious manner and, despite his loss, he considers the town supporters have gained.

The other type of man mentioned, the free-lance scout, is a nuisance to all football managements. He will write glowing letters about a player's abilities, with a result that a two-day journey is sometimes undertaken to watch the individual in question. Usually the player under review would not get into our "B" team; but always the explanation is the player had a "bad day." Invariably when such news is followed up, no further notice can be taken of it, for it will be obvious to a club representative that the player has no idea of the game. When a free-lance gets a really good player, he will write to possibly five or six clubs and advise them all the others are attending a certain match and are all interested in the player. No letter can be reasonably looked over, but the Managers to-day are becoming used to such clumsy methods and a telephone call around

(Continued on page 20)



Phone 4753.

# TOOMER

## 19, London Road, SOUTHAMPTON

(only address).

OFFICIAL OUTFITTER  
to the SOUTHAMPTON  
FOOTBALL CLUB

SPECIALIST IN ALL  
SPORTING FOOTWEAR

TO LET

## LISLE, MUNDAY & CO.,

MANUFACTURERS OF  
PAINTS, VARNISHES, ENAMELS & COLOURS  
FOR HOME AND EXPORT.

Sole Makers of the following specialities:

LATONA	The Super Enamel.
SOLENT	Hard Gloss Varnish Surface Paint.
OYLASTIC	Super Quality Finishing Oil Paint.
SOUTHAMPTON	Genuine White Lead Paint.
SOLENT	Oil Bound Washable Water Paint.
LAIFLAT	Flat Finish Wall Paint.
SOLENT	Scumble Stains (Ready Bound).
MARINE	Varnishes.

Paint and Varnish Works: PRIORY ROAD. Warehouses: 46, 47, 48, 49, ORCHARD LANE, SOUTHAMPTON. Established 1848.  
Telephone Nos. 74077 & 3819. Telegrams: "Paint, Southampton."

### HALF-TIME

1st DIVISION.	2nd DIVISION.
<b>A</b> Arsenal .....	<b>N</b> Blackburn .....
<b>B</b> Blackpool .....	<b>O</b> Fulham .....
<b>B</b> Birmingham .....	<b>O</b> Manchester City .....
<b>C</b> Liverpool .....	<b>P</b> Bury .....
<b>C</b> Chelsea .....	<b>P</b> Norwich .....
<b>C</b> Charlton .....	<b>Q</b> Coventry .....
<b>D</b> Derby .....	<b>Q</b> Plymouth .....
<b>D</b> Portsmouth .....	<b>R</b> Tottenham .....
<b>E</b> Everton .....	<b>R</b> Sheffield Wed. ...
<b>E</b> Sunderland .....	<b>S</b> Millwall .....
<b>F</b> Leeds Utd. ....	<b>S</b> Swansea .....
<b>F</b> Manchester U. ...	<b>T</b> Tranmere .....
<b>G</b> Middlesbrough ...	<b>T</b> West Bromwich .....
<b>G</b> Leicester .....	<b>U</b> Notts Forest .....
<b>H</b> Preston .....	
<b>H</b> Brentford .....	
<b>J</b> Stoke .....	
<b>J</b> Bolton .....	
<b>K</b> Wolverhampton ..	
<b>K</b> Aston Villa .....	
<b>L</b>	<b>X</b> Southend Res. ...
	<b>X</b> Saints Res. ....

HALVE YOUR  
WORK

Wm. DIBBEN & SONS, Ltd.

DOUBLE  
YOUR LEISURE

## CLEAN SPORT. CLEANER CLOTHES

with

# Hotpoint

REGD TRADE MARK

ELECTRIC WASHING MACHINE.

The Hotpoint Electric Appliance Co., Ltd.,  
3, East Street, Southampton. Telephone Southampton 4389.

### SCORE BOARD.

3rd DIVISION (S.)

**A** Ipswich .....

**Q. P. Rangers** ...

**B** Walsall .....

**B** Bristol Rovers ...

**C** B'm'th and Bos. ...

**C** Brighton .....

**D** Bristol City .....

**D** Crystal Palace ...

**E** Cardiff City .....

**E** Southend .....

**F** Exeter City .....

**F** Clapton Orient ...

**G** Northampton ...

**G** Swindon .....

**H** Notts County ...

**H** Port Vale .....

**J** Reading .....

**J** Mansfield .....

**K** Torquay .....

**K** Newport .....

**L** Watford .....

**L** Aldershot .....

3rd DIVISION (N.)

**N** Accrington .....

**N** Doncaster .....

**O** Barrow .....

**O** Chester .....

**P** Barnsley .....

**P** Stockport .....

**Q** Gateshead .....

**Q** Hartlepool .....

**R** Halifax .....

**R** Hull City .....

**S** New Brighton ...

**S** Bradford City ...

**T** Oldham .....

**T** Lincoln City .....

**U** Rochdale .....

**U** Crewe .....

**V** Rotherham .....

**V** Southport .....

**W** Wrexham .....

**W** Darlington .....

**X** York City .....

**X** Carlisle .....

WE SPECIALISE IN  
EVERY HOUSEHOLD  
NEED

Wm. DIBBEN & SONS, Ltd.

AND  
LABOUR  
SAVING DEVICE

you'll be surprised

How easily and quickly  
you can Learn to Drive.  
Thousands are earning  
good money to-day with  
an open air life, free  
from the restrictions of  
office, shop and factory.  
Write, call or phone  
5243 to-day for a FREE  
TRIAL and see for your-  
self.

## HAMPSHIRE SCHOOL OF MOTORING

### 44 ABOVE BAR

Southampton's only R.A.C. Certified Instructors

## THE BEST and SAFEST MILK

plus the additional advantage of  
the Aluminium Cap Sealing which  
completely covers the pouring edge  
of the milk bottle, ensuring perfect  
protection from transport and  
handling infection, is supplied ...  
IN EVERY STREET AND  
DISTRICT OF SOUTHAMPTON

by

## Alfred Brown

Ltd.,

### Hill Farm Dairies.

Phone 3041.

And Branches.

Car Park for Football supporters  
at our Hill Lane Depot.  
Nominal charges.



## 1st Team Fixtures.

1938				
Aug. 27	Tottenham Hotspur	<i>h</i>	1	2
" 30	Burnley	<i>a</i>	1	2
Sept. 3	Bury	<i>a</i>	2	5
" 10	Coventry City	<i>a</i>	0	3
" 14	Plymouth Argyle	<i>h</i>	2	1
" 17	Nottingham Forest	<i>h</i>	2	2
" 24	Newcastle United	<i>a</i>	0	1
Oct. 1	West Bromwich A.	<i>h</i>	2	1
" 8	Norwich City	<i>a</i>	1	2
" 15	Sheffield Wed.	<i>h</i>	4	3
" 22	Fulham	<i>a</i>	1	1
" 29	Tranmere Rovers	<i>h</i>	3	1
Nov. 5	Millwall	<i>a</i>	1	0
" 12	Manchester City	<i>h</i>	1	2
" 19	Bradford	<i>a</i>	1	2
" 26	Swansea Town	<i>h</i>	4	1
Dec. 3	Chesterfield	<i>a</i>	1	6
" 10	Blackburn Rovers	<i>h</i>	1	3
" 17	West Ham United	<i>a</i>	2	1
" 24	Tottenham Hotspur	<i>a</i>	1	1
" 26	Sheffield United	<i>a</i>	1	5
" 27	Sheffield United	<i>h</i>	2	2
" 31	Bury	<i>h</i>	0	0
1939				
Jan. 7	Chelmsford *	<i>a</i>	1	4
" 14	Coventry City	<i>h</i>	0	2
" 28	Newcastle United	<i>h</i>	0	0
Feb. 4	West Bromwich A.	<i>a</i>	0	2
" 8	Nottingham Forest	<i>a</i>	2	0
" 11	Norwich City	<i>h</i>	3	1
" 18	Sheffield Wed.	<i>a</i>	0	2
" 25	Fulham	<i>h</i>	2	1
Mar. 4	Tranmere Rovers	<i>a</i>	1	1
" 11	Millwall	<i>h</i>	1	1
" 18	Manchester City	<i>a</i>	1	2
" 25	Bradford	<i>h</i>	3	2
April 1	Swansea Town	<i>a</i>	3	1
" 7	Luton Town	<i>a</i>		
" 8	Chesterfield	<i>h</i>		
" 10	Luton Town	<i>h</i>		
" 15	Blackburn Rovers	<i>a</i>		
" 22	West Ham United	<i>h</i>		
" 29	Burnley	<i>h</i>		
May 6	Plymouth Argyle	<i>a</i>		

\* F.A. Cup

Making the League position

## SECURE

is one of the principal aims  
of a League Football Club.

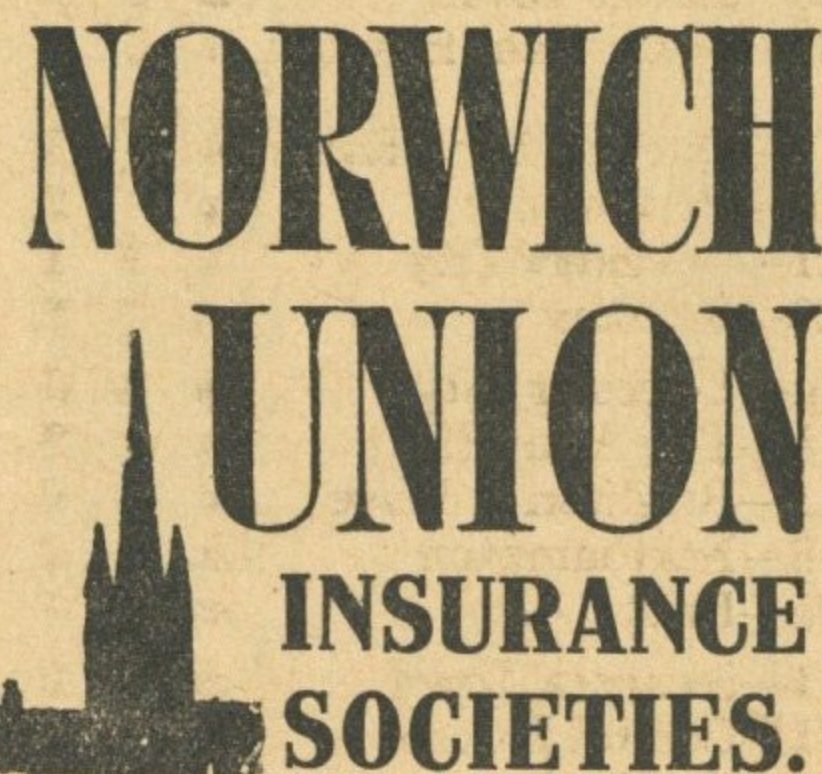
Making the **FUTURE**

**SECURE** for yourself

and your dependants is of  
paramount importance to

**YOU!**

You can be sure of to-morrow  
if you insure to-day with the



SOUTHAMPTON OFFICES:

(Life) 85 Above Bar.

District Manager: C. J. Cosgrove.

Telephone 4394.

(Fire & Accident) 125 High Street.

Inspector: K. M. Cattermoule.

Telephone 3030.

## London Combination.

1938				
Aug. 27	Charlton Athletic	<i>a</i>	1	1
" 29	West Ham United	<i>h</i>	2	8
Sept. 3	Tottenham Hotspur	<i>h</i>	1	2
" 7	Bournem'th & Bos.	<i>a</i>	1	3
" 10	Portsmouth	<i>h</i>	3	1
" 15	Queen's Park Rang.	<i>a</i>	1	4
" 17	Coventry City	<i>a</i>	1	5
" 24	Reading	<i>h</i>	2	3
" 28	Luton Town	<i>h</i>	2	2
Oct. 1	Leicester City	<i>a</i>	2	4
" 8	Brighton & Hove	<i>h</i>	0	2
" 12	Chelsea	<i>h</i>	3	1
" 15	Northampton	<i>a</i>	1	2
" 22	Bristol City	<i>h</i>	3	0
" 29	Swansea Town	<i>a</i>	0	1
Nov. 5	Crystal Palace	<i>h</i>	4	1
" 12	Watford	<i>a</i>	0	1
" 19	Millwall	<i>h</i>	4	0
" 26	Fulham	<i>a</i>	1	1
Dec. 3	Brentford	<i>h</i>	1	4
" 10	Arsenal	<i>a</i>	0	6
" 17	Clapton Orient	<i>h</i>	3	1
" 26	Luton Town	<i>a</i>	0	6
" 31	Tottenham Hotspur	<i>a</i>	0	3
1939				
Jan. 7	Queen's Park Rang.	<i>h</i>	1	3
" 14	Portsmouth	<i>a</i>	1	2
" 21	Coventry City	<i>h</i>	1	1
" 28	Reading	<i>a</i>	1	6
Feb. 4	Leicester City	<i>h</i>	4	0
" 8	The Army (Fr.)	<i>a</i>	8	2
" 11	Brighton & Hove	<i>a</i>	0	0
" 18	Northampton	<i>h</i>	2	2
" 25	Bristol City	<i>a</i>	1	7
Mar. 4	Swansea Town	<i>h</i>	4	2
" 11	Crystal Palace	<i>a</i>	0	4
" 18	Watford	<i>h</i>	1	1
" 22	Fulham	<i>h</i>	4	1
" 25	Millwall	<i>a</i>	0	0
April 7	Southend United	<i>h</i>		
" 8	Brentford	<i>a</i>		
" 10	Southend United	<i>a</i>		
" 15	Arsenal	<i>h</i>		
" 19	Chelsea	<i>a</i>		
" 22	Clapton Orient	<i>a</i>		
" 26	Charlton Athletic	<i>h</i>		
" 29	West Ham United	<i>a</i>		
May 6	Bournem'th & Bos.	<i>h</i>		

## "A" Team Fixtures.

1938				
Au. *31	Portsmouth Gas Co.	<i>h</i>	4	0
Sept. 3	Lymington	<i>a</i>	3	2
" *7	Lymington	<i>h</i>	7	1
" 10	Salisbury Corinthians	<i>h</i>	4	0
" 14	Portsmouth Gas Co.	<i>a</i>	3	0
" 17	Bournem'th Gas Works	<i>a</i>	4	4
" 24	Basingstoke	<i>h</i>	4	0
Oct. 1	Gosport	<i>h</i>	1	1
" 15	Agwi United (s.s.c.)	<i>a</i>	4	0
" 22	Newport	<i>a</i>	0	4
Nov. 5	Basingstoke	<i>a</i>	1	3
" 5	Docks & Marine (s.s.c.)	<i>a</i>	3	0
" 12	Winchester City	<i>a</i>	1	2
" 19	Pirelli-General	<i>a</i>	2	1
" 26	Kinson Utd. (H.s.c.)	<i>a</i>	2	0
Dec. 3	Christchurch	<i>a</i>	2	2
" 10	Supermarine (s.s.c.)	<i>h</i>	1	1
" 17	Supermarine (Replay)	<i>a</i>	6	0
" 31	Totton	<i>h</i>	3	2
1939				
Jan. 7	Salisbury Corinthians	<i>a</i>	2	1
" 14	Pirelli-General	<i>h</i>	2	2
" 21	Andover	<i>h</i>	5	3
" 28	Andover (R-C. CUP)	<i>a</i>	1	2
Feb. 4	Sandown (H.s.c.)	<i>a</i>	0	2
" 25	Christchurch	<i>h</i>	6	0
Mar. 4	Totton	<i>a</i>	3	1
" 11	Ryde Sports	<i>a</i>	1	1
" 18	Bournemouth	<i>a</i>	0	1
" 25	Winchester City	<i>h</i>	2	1
April 1	Newport	<i>h</i>	1	3
" 7	Andover	<i>a</i>		
" 8	Cowes	<i>a</i>		
" 10	Gosport	<i>a</i>		
" 15	Bournem'th Gas Works	<i>h</i>		
" 19	Bournemouth	<i>h</i>		
" 22	Cowes	<i>h</i>		
May *1	Ryde Sports	<i>h</i>		

\* At the Dell.

## Hampshire League, Div. I.

Including Results of Matches  
played Saturday, 1st April, 1939.

	P.	W.	D.	L.	F.	Ag.	Pts.
Salisbury Corinth.	24	18	2	4	69	30	38
Newport.....	21	17	1	3	74	30	35
B'm'th Gasworks....	23	16	2	5	75	39	34
*So'ton "A".....	23	13	5	5	61	35	29
Cowes.....	24	12	2	10	55	41	26
*Ryde Sports.....	17	12	1	4	52	32	25
Gosport.....	20	10	3	7	43	38	23
Christchurch.....	24	9	3	12	44	66	21
Winchester City....	22	8	4	10	46	55	20
Bournemouth.....	23	8	4	11	42	39	20
Lymington.....	23	8	2	13	36	62	18
Portsm'th Gas Co.	20	8	0	12	49	46	16
Totton.....	19	7	1	11	37	46	15
Andover.....	24	5	3	16	43	74	13
Basingstoke.....	21	3	5	13	34	73	11
Pirelli-General.....	27	3	4	20	42	96	10

\* Two points deducted.



## FINDING THE LOCAL PLAYER—continued from page 15.

to the other clubs will probably show that an exact duplicate of the letter has been received in the other offices. To interest a few clubs in one player is the free-lance's main idea; he will get representatives possibly from two or three of the clubs and afterwards charge each of those clubs with his initial expenses when he first saw the player. At this time of the season we always get many more such letters than usual, and, after replying asking for further particulars or where the player can be seen in his next game, in the reply will be a request for Cup Final or International tickets in return for the information! I have a large basket by my desk for such missives.

At Berlin, on 14th May, 1938, before 100,000 people—the receipts totalling £23,000—England gained a decisive victory over Germany by six goals to three. Bastin opened the scoring, but Gellesch promptly equalised. Then Robinson, Broome and Matthews put on further goals for England before Gouchel got a second for Germany on the stroke of half-time. Midway in the second half Peffer scored a third for Germany, but Robinson and Goulden quickly made the issue safe in England's favour.

\* \* \* \* \*

In the luxuriant beauty of tropical forests and the fantastic slopes of towering mountains live the Kayans, Kenyans, and wild nomadic Punans; they drink their borak firewater to accompaniment of haunting chants, dance and sing, and experiment with poisoned arrows. They are tattooed, dwell in native long-houses where sometimes a whole village lives together under a chandelier of human heads hung from the dusty rafters.

\* \* \* \* \*

Since the first sailing of the *Mayflower* in 1620, Southampton has gradually but surely grown to deserve for itself the title "Premier Port of the Empire," and a tour round the wondrous Docks, hammers home to sightseers the terrific striving against gods of the elements, who must have looked with wondering eyes at the herculean (and subsequently triumphant) efforts of England's engineers and seamen. With its double tide, the Port is unique, and mammoth liners are able to berth without delay—which means a considerable saving of time and expense. The new graving dock is 1,200 feet long—big enough to hold the world's largest liners . . . . and yet can be emptied in roughly four hours—and that means getting rid of 260,000 tons of water!

## DOLPHIN GARAGE

and Private Hire Services.

PROPRIETOR: B. H. RANSOM.

HIGH STREET,  
SOUTHAMPTON.

Phone: So'ton 200411.

High-Class Cars at Moderate Rates  
for Docks, Station, Theatres, Tours,  
Weddings, etc.

## Go to CIRO'S Cafe Restaurant,

145, High Street

(Below Bar),

Southampton,

FOR QUICK SERVICE  
AT POPULAR PRICES.

LARGE PARTIES CATERED FOR  
AT SPECIAL PRICES.

Accommodation up to 200.

## Forthcoming Home Matches.

Sat. April 15	'B' Team v. Millbrook O.S. (Southampton Junior Cup Final).	2.0
	Arsenal Reserves	L.C. 3.30
Wed. April 19	'A' Team v. Sholing (Southampton Senior Cup Final).	6.15
Sat. April 22	WEST HAM UNITED	F.L. 3.15
Wed. April 26	Charlton Athletic Reserves	L.C. 3.15
Sat. April 29	BURNLEY	F.L. 3.15
Mon. May 1	Ryde Sports	H.L. 6.15
Sat. May 6	B'mouth and Bos. Reserves	L.C. 3.15

F.L. Div. II.—Seats in West Stand Centre bookable in advance at 3/6 each, and in East Stand Centre at 2/6 each, up to 1.0 p.m. on a Match Day.

"Be assured that there is nothing which wounds a noble heart so deeply as when he perceives that his honour is doubted."

There are too many dull people in the world to-day. If they would only try to see an adventure in every new day, the glory in every sunset, the wealth of happiness in the smiling face of a child, and something worth while in a thousand other everyday things, surely the world would be a happier, brighter place for all of us.



## GOAL SCORERS, 1938-39.

Name	Football League Div. II.	F.A. Cup	London Comb.	Hants League Div. I.	Other Matches	Other Cups
BATES, E. T. ...	2	—	3	—	1	—
BEVIS, W. ...	5	—	—	—	—	—
J. BEVIS ...	—	—	—	4	—	—
BOWDEN, O. ...	—	—	5	—	—	—
B. G. W. BOWYER...	—	—	—	—	—	2
BRIGGS, F. ...	12	—	5	—	—	—
BROPHY, H. R. ...	4	—	—	—	—	—
BROWNING, D. A. ...	—	—	—	1	—	1
J. H. BUGLASS ...	—	—	1	3	—	—
CARNABY, T. E. ...	—	—	1	—	—	—
CHALK, N. W. ...	—	—	—	1	—	3
CLARKE, W. H. ...	—	—	6	3	1	—
A. CREECY ...	—	—	—	—	—	1
A. CROFT ...	—	—	—	2	—	—
CUTTING, S. W. ...	—	—	3	—	—	—
GRIGGS, P. R. ...	—	—	2	—	2	1
HILL, F. R....	2	—	1	—	—	—
HOLT, A. G. ...	4	1	2	—	—	—
F. R. LOCK...	—	—	—	3	—	3
KELLY, G. ...	—	—	9	1	2	—
LANEY, L. C. ...	—	—	2	7	—	1
MCGIBBON, D. ...	—	—	9	12	1	—
OSMAN, H. J. ...	9	—	—	—	—	—
PARKIN, R....	2	—	—	—	—	—
SCOTT, J. R. ...	—	—	—	1	—	—
TOMLINSON, R. ...	10	—	2	—	—	—
R. VECK ...	—	—	—	7	—	—
WALL, A. J. ...	—	—	—	2	—	—
L. M. WALLACE ...	—	—	1	—	—	—
WEBBER, E. V. ...	—	—	1	1	—	—
L. A. WHITE ...	—	—	—	7	—	2
C. R. WHITE ...	—	—	—	1	—	3
WOODFORD, G. A....	—	—	—	1	—	—
Opponents ...	—	—	3	3	1	—

## TO-DAY'S PROGRAMME OF MUSIC.

The Southampton Albion Silver Band (Conductor—Mr. J. Williamson) will render the following Programme of Music this afternoon:—

March ..... "WINGS OVER THE NAVY."  
 Humor ..... "PANTALOOON."  
 Novelty Dance ..... "THE PARK PARADE."  
 Valse Medley ..... "THE GAY NINETIES."  
 Novelty Dance ..... "THE CHESTNUT TREE."  
 March ..... "ENCHANTRESS."

Half-Time :

March ..... "SONS OF THE BRAVE."  
 March ..... "THE RUNAWAY."

## THE SOUTH AFRICAN WAR PERIOD.

The season 1899-1900 was marked by the presence of a Southern club—Southampton—in the final. The opening of the war in South Africa was the first time that the winter game had been interfered with by the "clash of arms," and some of the clubs had to part with their men for the front. In the troublous days of disaster gates fell off. It was, however, only for the moment, but it threw a shadow over the football fields. The Association and clubs made a really magnificent response to the War Relief Fund that had been established. In the South the enthusiasm for professional football blazed out with the Cup competition, in spite of the heavy forebodings in many minds as to the efficiency of the British soldier. Portsmouth Club, an entirely new creation, were only beaten by Blackburn Rovers after a trio of contests. Queen's Park Rangers, almost a new club, beat Wolverhampton Wanderers after a draw. Millwall Club, after a triple battle with that most famous side, Aston Villa, qualified for the semi-final. Reading gave Newcastle United a close game, Tottenham Hotspur lost at Preston by a narrow margin, Southampton, with the luck of the draw in their favour, defeated Everton, Newcastle United, and West Bromwich Albion, and reached the final tie after a drawn game with Millwall. For the first time for eighteen years a Southern club stood at that altitude in the Cup competition, but the result of the match with Bury was a severe blow. This Lancashire club turned out on the day "as fit as fiddles," and in spite of a sweltering sun, which told its tale on some of the Southampton players, showed brilliant form, and won by 4 to 0.

Southampton Club again came to the front in 1902 and reached the final amid demonstrations of delight from the South, but again failed, being beaten by Sheffield United. For a club that had made such bold bids for the Cup, and set such a gallant example to the Southern towns, the Southampton club was singularly unfortunate.

There are parrot stories *and* parrot stories, but this is one we *can* print. A dear old lady had a parrot which swore prodigiously, so every Sunday she used to cover the cage to silence the bird. One Wednesday, however, the vicar called unexpectedly when the parrot was in full blast. In desperation the old lady covered the cage, and silence ensued. All seemed well, when, to her dismay, the vicar was interrupted by a harsh croak from the shrouded cage: "This is a—short week!"



# HANTS & DORSET MOTOR SERVICES LTD.

[IN ASSOCIATION WITH THE SOUTHERN RAILWAY CO.]

provide

THE BEST MEANS OF TRAVEL TO AND FROM SOUTHAMPTON.

SOME EXAMPLES :—

BISHOP'S WALTHAM	(3 routes)	2s. 0d. return.	Frequent Services.
CALSHOT		2s. 0d.	" " "
FAREHAM	(2 routes)	3s. 0d.	Hourly Service.
LYNDHURST		1s. 0d.	Approximately quarter-hourly Service.
ROMSEY	(3 routes)	1s. 4d.	Frequent Services.
SALISBURY		3s. 6d.	Forty-minute Service.
WINCHESTER	(2 routes)	2s. 0d.	Twenty-minute Service.

The above are only a few examples of the facilities available and numerous other services are run of which full particulars are given in the Company's Official Time Table (price 1d., including large-scale map) obtainable from Conductors and Offices.

## LUXURIOUS MOTOR COACHES AND LIMOUSINE CARS FOR HIRE.

A special staff is maintained exclusively for the organisation of PRIVATE HIRE PARTIES and OUTINGS, and vehicles seating from six to fifty-two persons may be hired at moderate cost for all kinds of excursions and tours.

Full information and bookings made at:—

OMNIBUS STATION (Bus Services and Coach Departures),  
West Marlands (opposite Civic Centre), Southampton.  
Telephone No.—SOUTHAMPTON 604.

MOTOR COACH STATION (Coach Departure and Long-Distance Services)  
Bedford Place (two-minutes' walk from Civic Centre).  
Telephone No.—SOUTHAMPTON 4001.

# SOUTHERN RAILWAY

DAILY CHEAP TICKETS TO SOUTHAMPTON  
BY ANY TRAIN.

From	3rd Class Return	From	3rd Class Return	From	3rd Class Return
Eastleigh ...	-/11	Dorchester ...	7/7	Romsey ...	1/2
Winchester ...	1/10	Portland ...	8/11	Salisbury ...	3/8
Gillin'ham (Do'set) ...	6/4	Swanage ...	7/7	Stockbridge ...	2/8
Swanwick ...	1/2	Wareham ...	5/9	Bournemouth Cent. ...	4/2
Cosham ...	2/11	Weymouth ...	8/8	Brockenhurst ...	2/1
Gosport ...	2/11	Holmsley ...	2/8	Lymington ...	2/8
P'mouth and S'sea ...	3/5	Poole ...	4/9	Ryde ...	4/1
Aldershot ...	6/-	Ringwood ...	3/3	Sandown ...	4/1
Alton ...	4/6	Wimborne ...	4/9	Shanklin ...	4/5
Basingstoke ...	4/6	Andover ...	3/11	Ventnor ...	4/5

Similar Cheap Tickets also from numerous other Hants, Dorset, and Isle of Wight Stations. For full list of bookings see bills.

• For SPECIAL EXCURSIONS at further Reduced Fares from numerous stations on First Team Match Days see bills.

Children under 14 half fare.