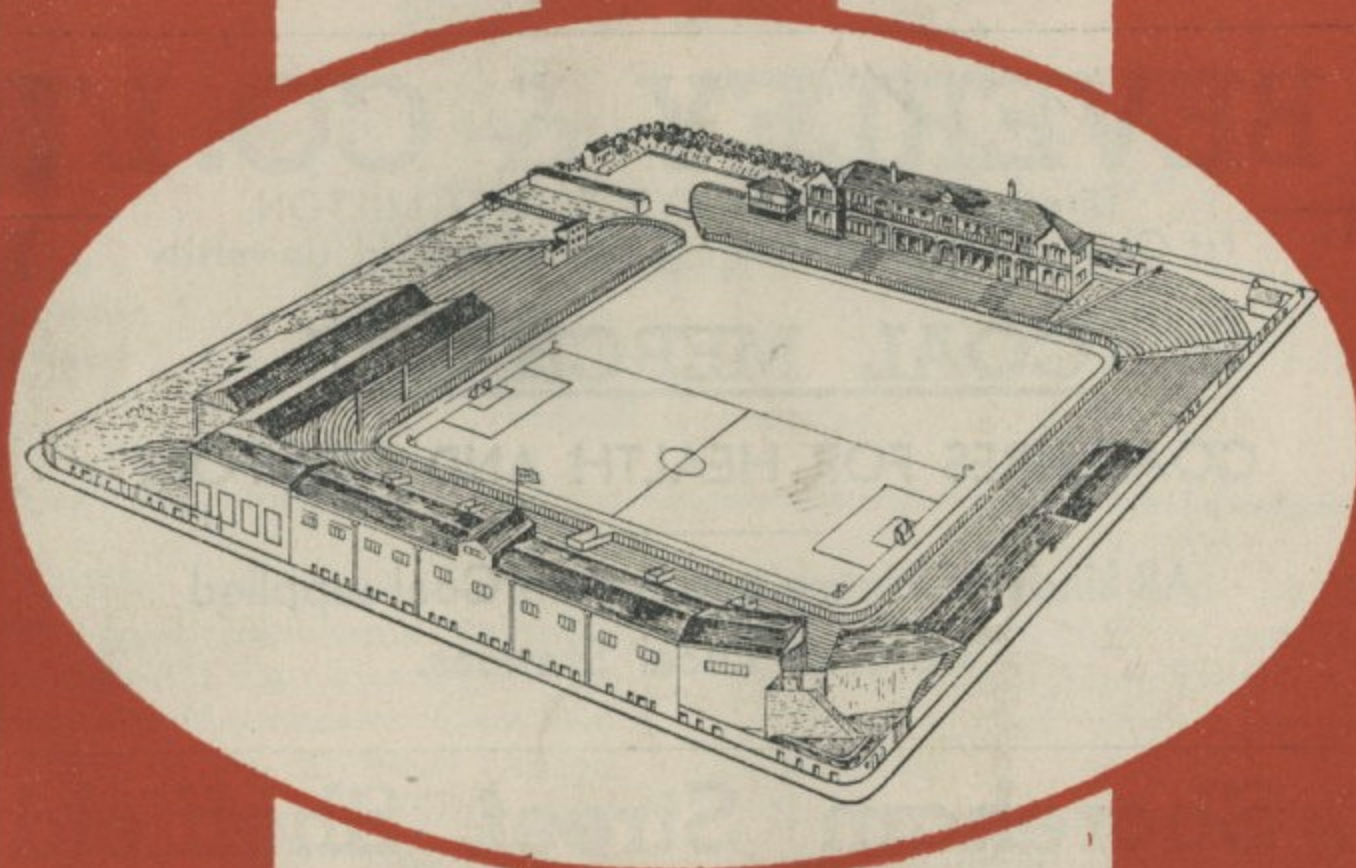


Vol. 42.

28th January, 1939.

Kick-off 3-0 p.m.

## OFFICIAL PROGRAMME



# SHEFFIELD UNITED

v. LUTON TOWN

F.A. CUP WINNERS 1899, 1902, 1915 and 1925  
FINALISTS 1901, 1936. LEAGUE CHAMPIONS 1897-98.

PRICE TWOPENCE.



Established 1857

Telephone : 50238

PRICES ON APPLICATION

## G. BEVERLEY & CO. LTD.

Directors : ARTHUR PYE, ERNEST MILTON  
1st Class Mining Certificate Course, Sheffield University

### COAL MERCHANTS

COAL FIRES FOR HEALTH AND COMFORT

All kinds of House and Steam Coal supplied  
from all Local Stations.

401, Shoreham Street, Sheffield 2

PLEASE CALL US OVER THE COALS

## JACK ARCHER Athletic 90 Bramall Lane, Outfitter Sheffield 2

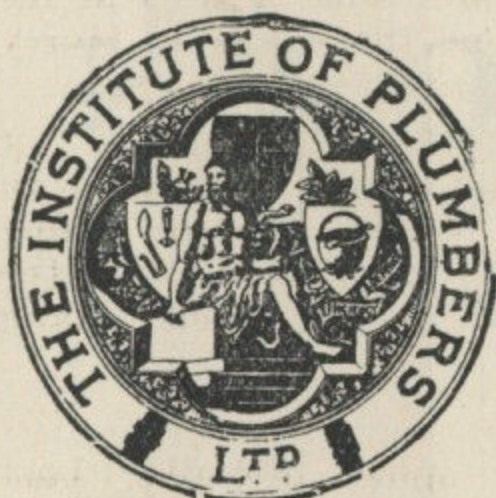
'Phone  
20593.

Contractor to Sheffield United Cricket and Football Clubs.

Every Requisite for  
FOOTBALL, HOCKEY, CRICKET, TENNIS, CROQUET, Etc.

Jerseys, Knickers, Sweaters Tennis Rackets Re-Strung. Outfitter to Colleges and  
Boxing Gloves, Gauntlets All the Best Makes Represented. Quality the Best. Schools. Repairs a speciality  
Bags, etc. Special Discount to Clubs.

Telephone Nos. 23592 & 50874



## B. B. PERT & SONS,

REGISTERED PLUMBERS M.I.P.

Authorised to the Sheffield Corporation.

Steam, Gas and Hot Water Fitters.  
We specialize in all kinds of Plumbing Repairs.

313 SHOREHAM STREET, SHEFFIELD 2.

Private Address : 20 Norton Lees Crescent. Tel. 50874.

Estimates Free.

Orders promptly attended to.

## Sheffield United Football Club Ltd.

### BOARD OF DIRECTORS :

Mr. A. J. Platt \* - (Chairman).  
Coun. G. E. Marlow, J.P.\* - (Vice-Chairman).

E. S. Atkin \*  
F. R. Atkin  
L. C. Barber  
W. M. Beeden \*  
F. Copestake \*

E. R. Davy  
Coun. E. S. Graham, J.P. \*  
Coun. G. H. Lawrence \*  
R. Lawrence \*

W. E. Parker \*  
A. Pye \*  
H. Stokes \*  
L. N. Stubbs  
H. Blacow Yates, F.R.C.S.\*

\* Football Committee.

NEWSPAPER critics all over the country paid handsome tributes to the splendid Cup victory of the United team over Manchester City and it was gratifying to see Sheffield United hitting the headlines. Gratifying in a double sense in that such recognition of the team's work not only helps the club but also helps to bring Sheffield to the public eye. The advertising value of these events cannot be ignored.

You will admit that in the last three years United have been "doing their stuff." Season after season they have been taking a foremost part in the Second Division promotion fights, even though headed off at the finish. Recall 1936 when the team went through 22 Cup and League games without a reverse and got to Wembley and that despite the series of handicaps that came along in the shape of injuries to players.

This season the United have been near the top of the Division for months and there is a bright prospect of, at last, regaining First Division football for Sheffield, though it does not do to take promotion for granted. Accidents will happen.

### VALUE FOR MONEY.

The crowd last Saturday was approximately 50,000, despite the counter-attraction at Hillsborough. Do not such figures suggest that Sheffield could give United better support on other occasions? United ought to have an average of 30,000. Indeed, the team deserve good, healthy support of that size and we go so far as to say that people who come to the Lane get good value for money. More than one spectator said last Saturday that the match had been worth double the money charged.

If the club had steady 30,000 crowds, think how it would be equipped financially to tackle First Division problems in the event of promotion being won, as we hope.

Not that United want to be described as the "Arsenal of the North," for the policy of the last few years has been justified to the hilt. Last Saturday, for instance, the Manchester City team contained players whose fees individually had been more than those paid for the whole of the Sheffield United eleven.

Yet you'll agree that United on the day were the better side.

### MEN OF MERIT.

Sheffield ought to recognise fully the merits of the team. Smith is a first-class goalkeeper, always entertaining to watch; Young and Carr are as fine a pair of club backs as you will find anywhere. The half-back line is powerful, for Jackson has few superiors at right-half, Johnson is dominant in the middle and Settle coming on by leaps and bounds on the left.

Hagan is delightful in his artistry, Hampson, a grand and valuable inside forward; Dodds, a personality as leader; Pickering a cool and clever schemer, and Jones fast and with a shot in his locker. You know the worth of Harry Hooper and the others you have seen.

Call it "advertising our goods" if you like, we don't mind. You have to advertise these days and we're telling you that we are "delivering you the goods," and want you to back us and the players up.

### TEAM SPIRIT.

A fine team spirit prevails. Last Saturday's tie proved that, though it had been proved many a time in the

Continued on page 6



# LET Jubilee MILK STOUT

TAKE YOU  
INTO THE  
"FIRST DIVISION"  
OF  
HEALTH

Brewed and Bottled by:  
**CARTER, MILNER & BIRD LIMITED,**  
SHEFFIELD 3.  
Obtainable in all the leading Clubs and Free Houses.

MATCHLESS  
THE TEAM  
●  
MATCHLESS  
THE BEER  
at  
GRAND  
HOTEL

Roundabout Bar City Lounge  
Leopold Street Barkers Pool

## LEAGUE TABLES.

### THE LEAGUE—DIVISION I.

	P.	W.	L.	D.	Goals.		Pts.
					F.	A.	
Derby County.....	25	15	5	5	46	28	35
Everton.....	24	15	7	2	48	26	32
Wolverhampton W.....	24	11	6	7	43	20	29
Middlesbrough.....	26	11	8	7	58	43	29
Liverpool.....	26	11	8	7	45	40	29
Stoke City.....	26	10	9	7	42	48	27
Charlton Athletic.....	24	11	9	4	33	35	26
Leeds United.....	24	10	8	6	42	43	26
Sunderland.....	25	9	9	7	33	37	25
Arsenal.....	24	8	8	8	27	23	24
Aston Villa.....	24	10	10	4	41	36	24
Bolton Wanderers.....	25	8	8	9	42	38	24
Manchester United.....	25	7	9	9	36	35	23
Grimsby Town.....	24	8	9	7	34	41	23
Preston North End.....	24	8	10	6	36	39	22
Blackpool.....	25	7	10	8	31	42	22
Chelsea.....	24	8	11	5	45	48	21
Huddersfield Town.....	25	8	12	5	34	37	21
Leicester City.....	25	6	11	8	31	45	20
Portsmouth.....	23	6	9	8	24	40	20
Brentford.....	23	7	11	5	32	49	19
Birmingham.....	25	7	14	4	41	49	18

### THE LEAGUE—DIVISION II.

	P.	W.	L.	D.	Goals.		Pts.
					F.	A.	
Blackburn Rovers.....	27	16	8	3	66	40	35
<b>SHEFFIELD UNITED.</b>	<b>25</b>	<b>11</b>	<b>4</b>	<b>10</b>	<b>42</b>	<b>26</b>	<b>32</b>
Newcastle United.....	25	13	8	4	44	28	30
Coventry City.....	24	13	7	4	38	27	30
Sheffield Wednesday.....	24	12	7	5	62	43	29
West Bromwich Albion.....	24	13	8	3	62	48	29
Manchester City.....	24	12	9	3	64	50	27
Tottenham Hotspur.....	24	10	7	7	40	35	27
Luton Town.....	25	12	10	3	49	43	27
Fulham.....	23	10	7	6	36	30	23
Burnley.....	26	9	9	8	33	37	26
West Ham United.....	24	10	9	5	44	33	25
Chesterfield.....	24	10	9	5	38	36	25
Bradford.....	26	8	10	8	45	53	24
Millwall.....	24	8	9	7	38	33	23
Bury.....	26	7	10	9	37	45	23
Plymouth Argyle.....	24	9	11	4	31	36	22
Southampton.....	24	7	12	5	34	49	19
Swansea Town.....	23	4	9	10	28	46	18
Nottingham Forest.....	24	5	13	6	30	55	16
Norwich City.....	22	7	14	1	27	54	15
Tranmere Rovers.....	26	4	20	2	28	69	10

### CENTRAL LEAGUE.

	P.	W.	L.	D.	Goals.		Pts.
					F.	A.	
Chesterfield.....	26	14	4	8	55	34	36
Blackpool.....	26	13	4	9	50	33	35
West Bromwich Albion.....	26	14	6	6	61	42	34
Everton.....	26	15	8	3	47	46	33
Aston Villa.....	25	13	7	5	60	39	31
Manchester City.....	26	12	8	6	51	35	30
Wolverhampton W.....	25	12	7	6	46	33	30
Manchester United.....	25	13	8	4	57	42	30
Sheffield Wednesday.....	26	12	11	3	46	48	27
Leeds United.....	26	8	10	8	45	47	24
Birmingham.....	25	8	9	8	39	41	24
Newcastle United.....	25	9	11	5	53	55	23
Derby County.....	26	8	11	7	51	61	23
Bolton Wanderers.....	22	8	8	6	34	29	22
<b>SHEFFIELD UNITED.</b>	<b>26</b>	<b>9</b>	<b>13</b>	<b>4</b>	<b>38</b>	<b>47</b>	<b>22</b>
Blackburn Rovers.....	25	10	15	0	45	61	20
Preston North End.....	24	6	11	7	34	39	19
Burnley.....	25	8	14	3	39	51	19
Huddersfield Town.....	25	7	13	5	33	51	19
Liverpool.....	24	7	12	5	34	54	19
Stoke City.....	25	7	14	4	41	43	18
Bury.....	23	5	14	4	33	61	14

## L·N·E·R TRIPS

## FOOTBALL PARTIES

### SPECIAL REDUCED FARES

**CHEAP RETURN TICKETS** are issued to Pleasure Parties, Football, Hockey and kindred Sports Clubs under the following conditions:—

#### Availability of Tickets.

#### DAY OF ISSUE ...

#### ONE CALENDAR MONTH

#### Fare for Double Journey.

3rd Class, Single Fare (+ fractions of 1d.).

1st Class, 50 per cent. over 3rd Class (+ fractions of 1d.).

3rd Class, Single Fare and one third (+ fractions of 3d.).

1st Class, 50 per cent. over 3rd Class (+ fractions of 3d.).

Children under 14 years of age are conveyed at half the adult fare.

Parties must consist of not less than equal to **8 ADULT FARES** (two children under 14 years of age being counted as one adult), and must travel together in each direction by specified trains.

### SPORTS PARTIES

Members of Football and all bona fide Sports Clubs, minimum **4 ADULT FARES**, travelling together in both directions, will be conveyed at the rates shown below by prior arrangement with the Railway Company:

#### Availability of Tickets.

#### DAY OF ISSUE ...

#### ONE CALENDAR MONTH

#### DAY OF ISSUE ...

#### Fare for Double Journey.

3rd Class, Single Fare (+ fractions of 1d.).

1st Class, 50 per cent. over 3rd Class (+ fractions of 1d.).

3rd Class, Single Fare and one third (+ fractions of 3d.).

1st Class, 50 per cent. over 3rd Class (+ fractions of 3d.).

3rd Class, two thirds of Single Fare from point to point for a Tour (+ fractions of 1d.).

1st Class, 50 per cent. over 3rd Class (+ fractions of 1d.).

### ROAD MOTOR COACHES FOR HIRE

The Company can arrange to supply private motor coaches for special parties for special occasions.

In order that satisfactory provision may be made, Secretaries of Clubs requiring meals on trains to which Restaurant Cars are attached should give prior intimation when asking for Reduced Fare facilities to apply.

Should you wish to avail yourself of these or any other cheap party facilities, please make application to your local station a few days before the match, or communicate with the Passenger Manager, Liverpool Street Station, London, E.C.2.



Continued from page 3.

past and in the Cup game at Blackpool where Harry Hooper was hurt in the first few minutes.

When Jackson hurt his knee and had to go off the players simply took the blow gamely, decided to pull out a little bit extra and played like demons, to the discomfiture of Manchester City.

They lived up to the high traditions and club loyalty set up in the palmy days when Ernest Needham commanded a grand United team and laid the foundations of the club's reputation for Cup-fighting.

Once again, therefore, United are in the last 16 of the historic knock-out tournament and the next foe will be tackled just as earnestly. The visitors will be Grimsby Town and a grand game it will be, too, for Grimsby play entertaining football and have many well-known players in the ranks. Tweedy has kept goal for England; Vincent and Hodgson are stout backs and Hall, Betmead and Buck are a grand trio of halves. Forward star performers include Beattie and Howe. But more anon.

#### TO-DAY'S VISITORS.

Our visitors to-day are Luton Town, the team which defeated Manchester

City in the League game before City came to the Lane. They are a very useful team and in recent weeks have sprung more than one surprise as you know. Luton won the Championship of the Southern Section the season before last and won promotion, though they were not new to the Second Division, as they were members of it several years ago.

Actually, Luton were among the pioneers of football in the South of England and the first all-professional Southern side. The club came into being with the amalgamation of two minor clubs, Wanderers and Excelsior in 1885 and for five years was run as an amateur concern. Then came the first stride towards professionalism when three players were paid the sum of five shillings per week.

On 10th August, 1891, the whole team became professional, with the fee of 2/6d. per player for a home match and 3/- each for an away game. Then, probably with the object of encouraging talent in the town and district, any player of the Luton district was paid double the ordinary fee.

Original members of the old Southern League, Luton eventually gained ad-

Continued on page 7.

Continued from page 6.

mission into the Second Division, but after three disappointing seasons, the club returned to the Southern League and after the war were incorporated with the League along with the others to form the Southern Section.

#### LINES ABOUT PLAYERS.

Here are a few details about players of Luton:—

Joseph Coen, the goalkeeper, had experience with Clydebank, Glasgow, Celtic, Guildford City and Bournemouth before joining Luton in 1934.

King and Dunsmore are two resolute, quick moving backs, while John Finlayson, the wing half-back, developed with Thorniebank (his birthplace) assisted Motherwell and Cowdenbeath before signing for Clapton Orient and going to Luton in 1935.

John Nelson is one of the tallest centre half-backs in the game, standing over 6ft. A product of Chorley, the Lancashire Combination club, he assisted Preston North End and Wolverhampton Wanderers, the latter for three seasons before he went to Luton in 1935. At one time he was employed in a bleach works.

Fred Roberts, wing half-back, used to be an inside-left. Hails from Greet

Green, Staffs and played with Smethwick Highfield and Piggotts (local works team) before signing for Birmingham as centre-forward. Has been with Luton some four years.

Joe Loughran, wing half-back, was well-known in the ranks of Birmingham before moving to Luton. Capped for England in Junior Internationals v. Scotland and Ireland in 1935.

George Stephenson, the outside-left, came out with Stillington, Durham and after being with Durham City had three seasons with Aston Villa before going to Luton. Connelly, his partner, used to be with Newcastle United, a jolly useful player, as are Billington, making a name at centre-forward; Redfern, once with Newry Town and inside-right partner to an enterprising winger in Carroll.

\* \* \* \* \*

#### STRIKE HARD.

There is only one way to win Cup-ties, and that is to strike hard from the word "go." To take a "feeler" at the opposition is an invitation for the opposition to dictate the policy. To permit that in football is fatal.—Mr. George Allison (Arsenal).

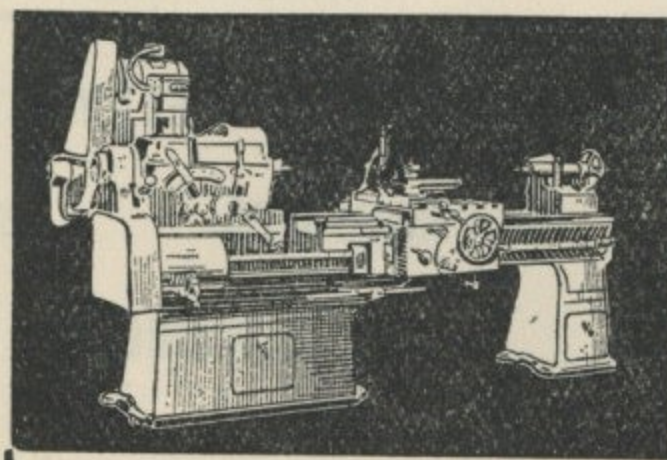
\* \* \* \* \*

Barrow's Soccer team has never yet had a 10,000 home gate.

## Items of music to be played by SHEFFIELD IMPERIAL SILVER PRIZE BAND

Conducted by A. CARR.

MARCH	... ..	"Always Ready"	...
MARCH	... ..	"Wings over the Navy"	Pub. by Feldman & Co.
FOX TROT	... ..	"Cathedral in the Pines"	Pub. by Feldman & Co.
FOX TROT	... ..	"Keep a Smile on your Face"	Pub. by Feldman & Co.
FOX TROT	... ..	"Ride Tenderfoot, Ride"	Pub. by Feldman & Co.
FOX TROT	... ..	"I'm Gon'na Lock my Heart"	Pub. by Keith Prowse.
WALTZ	... ..	"Sunny Side of the Rockies"	Pub. by Keith Prowse.
FOX TROT	... ..	"Little Clown"	Pub. by Lawrence Wright.
PATROL	... ..	"The Chocolate Soldier's Daughter"	Pub. by Peter Maurice.



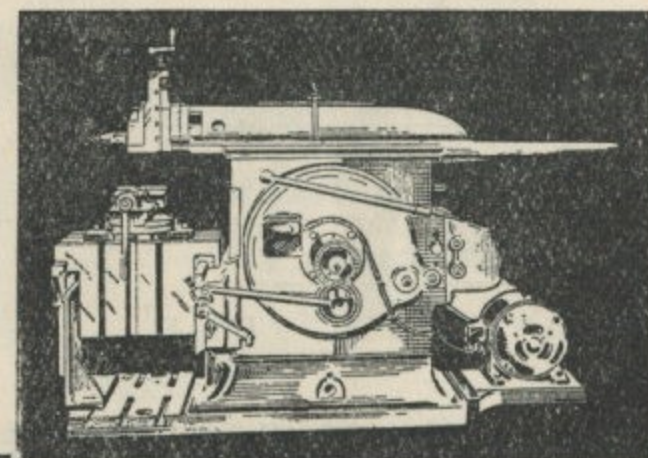
NEW AND  
USED

# MACHINERY

TELEPHONE  
24563

OF ALL TYPES  
IN STOCK

AGENTS FOR—  
Taylor, Taylor & Hobson, Ltd., Electric Etching  
Machines.  
E. H. Jones (Machine Tools) Ltd., Thiel Bandsaw-  
ing, Filing, Shaping and Tapping Machines.  
Engineering Finance Ltd.  
Janson Steel Bandsawing Machines.  
Janson Shaping and Electric Drilling Machines.





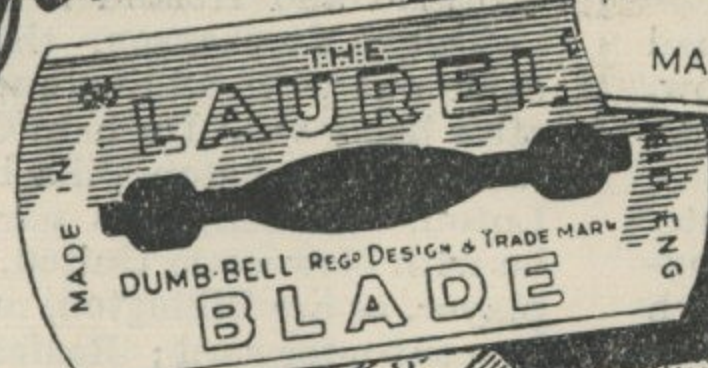
# LAUREL BLADES

FOR

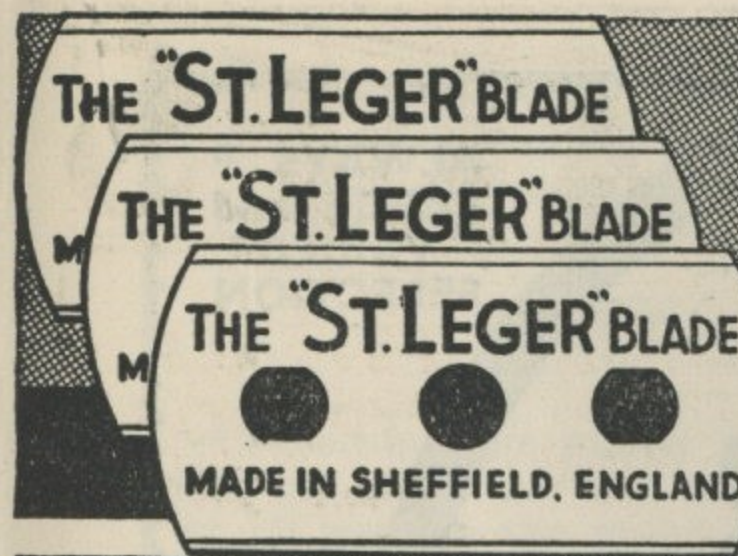
*Perfect Shaves*



FIT ALL  
TYPES OF  
RAZORS



MADE IN SHEFFIELD BY  
**GEO. H. LAWRENCE, LTD.**  
LAUREL WORKS, NURSERY ST.,  
SHEFFIELD. 3.



# ST. LEGER

RAZOR BLADES

*SHEFFIELD'S FINEST 1<sup>st</sup> BLADE*

6 FOR 6<sup>D</sup>  
12 FOR 1<sup>1</sup>/<sub>2</sub>

THOMAS WARD & SONS LTD. WARDONIA WORKS, SHEFFIELD

## SHEFFIELD UNITED

RED AND WHITE SHIRTS

1 SMITH	3 CARR
2 YOUNG	6 SETTLE
4 JESSOP	5 JOHNSON
7 HAGAN	8 HAMPSON
9 DODDS	10 PICKERING
11 JONES	

Referee: Mr. H. T. WRIGHT (Macclesfield).

Linesmen: G. TEDDS (Bestwood, Notts.) & W. N. COLLIER (Leeds).  
*Red & White Flag. Blue & White Flag.*

12 STEPHENSON	13 CONNELLY	14 BILLINGTON	15 REDFERN	16 CARROLL
17 ROBERTS	18 DREYER	19 FINLAYSON	21 KING	
20 DUNSMORE	22 COEN			

## LUTON TOWN

WHITE SHIRTS

Phone 24295-6 (Two lines).

*Stewart & Stewart  
of Pinstone Street*

Tailors and Outfitters to men  
and their sons.

*Suits  
Dress Wear  
Overcoats*

Ready for Wear or  
To Measure.

## "THE ARCADE" CO-OPERATIVE RESTAURANT

3 MINUTES  
FROM THIS GROUND  
FOOTBALL PARTIES  
SPECIALLY  
CATERED FOR

ECCLESALL ROAD  
EXCELLENT FOOD SERVICE  
AND ACCOMMODATION

LUNCHEONS SPECIAL FISH  
14 1/9 2/3 TEAS from 1/1

**SHEFFIELD & ECCLESALL CO-OPERATIVE SOCIETY LTD.**

## WAKE UP YOUR LIVER BILE

without Calomel—and you'll jump out of bed  
in the morning full of vim and vigour

YOUR LIVER should pour out two pints of liquid bile into  
your system daily. If this bile is not flowing freely, your  
food doesn't digest. It just decays inside you. Gas bloats  
up your stomach. You get constipated.

Laxatives help a little, but a mere bowel move-  
ment doesn't get at the cause. It takes those good  
old Carters Brand Little Liver Pills to get these two  
pints of bile flowing freely and make you feel "up and  
up." Harmless, gentle, yet amazing in making bile  
flow freely. Ask for Carters Brand Little Liver Pills.  
Stubbornly refuse anything else. 1/3 and 3/- at all  
chemists.

NOW ALSO IN  
PENNYWORTHS  
EVERYWHERE

Listen to the Carter Radio Programme on Radio  
Luxembourg every Sunday at 11.15 a.m. and on  
Radio Normandy every Sunday at 2.45 p.m.



**FUR COAT  
SPECIALISTS**

**ALWAYS a  
LARGE and  
VARIED  
SELECTION**

**Fox's  
Furriers**

**56, THE MOOR  
SHEFFIELD**

**JOSEPH FOX**

**PHONE 23768**

**(FURRIER) Ltd.**

**G. SUTHERLAND**

**HIGH-CLASS CONFECTIONER  
and CATERER**

**WEDDINGS  
BANQUETS  
BALLS  
SPORTS  
and all  
SOCIAL FUNCTIONS  
CATERED FOR**

**56 MIDDLEWOOD RD.  
SHEFFIELD 6**

**Telephone Nos. 43223 & 43316**

**Prompt attention given to all Orders.**

## **SHEFFIELD UNITED SUPPORTERS' CLUB**

### **NOTES**

Concerning the match last Saturday I should like to say first of all how sorry we all were at the injury sustained by Ernest Jackson so early in the game. All who saw it happen, will readily admit that it was quite an accident, and praise is due to Doherty of Manchester City for the prompt way he summoned the Trainers, as he must have realized that something serious had happened.

Whilst we fully understand the seriousness of the injury, we are all pleased that no bones are broken, so on behalf of the Supporters, here's wishing Jackson a sound recovery and a speedy return to his club mates, who I am sure, will miss him a lot. Well, we saw the match! "and what a match." It would be impossible to speak of any individual player, because they all played splendid football.

If I speak collectively and talk about "United" that covers all of them. The way those "Ten Lads" set about their task in face of such an early shock surprised everyone. Realising the team we were up against, we all felt a bit worried when we knew that we had only ten men, but thanks to "United" we were not kept in suspense long. Down the field went our "Lads" with encouragement ringing in their ears, and it was obvious to everyone that stamina was going to play a big part, and when "United" got the first goal, it was the result of good team work and wonderful football by ten trained-to-the minute Heroes. Not to be satisfied, off they went again and again, and as the "shades of night were falling fast" popped another one in, this I didn't see, but hearing the shouting I just kept my rattle going much to the annoyance of some "Mancunians" close by. After the match, everyone was full of praise for "United" and they all deserved the splendid reception they got on leaving the field. "Well done Boys."

Whilst talking about the Cup, we must not forget the League. To-day we have the "Hatters" from Luton, and whilst we shall be pleased to see them, we should like them to know that we are out for revenge, hoping to see a good, clean game, and may the best team win,

hoping it will be "United," so you Supporters, throw your chests out, open your lungs and Get Cracking with the good old cry of:—

**UP THE BLADES.**

**H.U.**

\* \* \* \* \*

### **NOT ALL HONEY.**

The running of a football club is not all honey. We have weathered many storms, financial and otherwise, believing that the confidence now created will counteract any setbacks that the future may have in store for the club. —Runcorn F.C. Programme.

\* \* \* \* \*

### **DERBY'S TWO REASONS.**

Our success so far in the League is due first of all to Jobey's ability to get the last ounce of football sense out of the men, and secondly, to their allowing the ball to do the work rather than trying to beat their men themselves. —Mr. Bendle Moore (Derby County chairman).

\* \* \* \* \*

Coventry City say they get better results from the players they pick up for little or nothing.

\* \* \* \* \*

Brentford forbid any player to have a car or motor cycle. The restriction has not got them very far so far.

\* \* \* \* \*

Of the original First Division clubs, Bolton, Derby, Stoke, and Wolves have never won the championship.

\* \* \* \* \*

Brierley Hill Alliance, the club which gave David Stokes and Ray Westwood to Bolton Wanderers, has been wound up.

\* \* \* \* \*

Fulham have 20 players under 21 on their books.

\* \* \* \* \*

Since 1893 Everton and Liverpool have played cup-ties at home on the same day 20 times.

\* \* \* \* \*

Willis Edwards, now in his 15th season with the club, has appeared in 413 League games for Leeds.

\* \* \* \* \*

Derby County have given a £500 cheque to their trainer, Dave Willis, after five years' service.

\* \* \* \* \*

A Bristol Rovers' player, having put his jersey on inside out, was advised not to change it as it might change his luck.

\* \* \* \* \*

The average age of Manchester United's forward line is 21.



## FIRST TEAM (League, Division 2).

## RESERVE TEAM (Central League).

DATE	DAY	OPPONENTS	G'RD	FOR	AGT	DATE	DAY	OPPONENTS	G'RD	FOR	AGT
1938.						1938.					
Aug. 27	S	Nottingham Forest .....	a	2	0	Aug. 27	S	Bolton Wanderers.....	h	2	0
29	M	Coventry City .....	h	0	0						
Sept. 3	S	Newcastle United .....	h	0	0	Sept. 1	Th	Sheffield Wednesday.....	a	0	5
10	S	West Bromwich Albion.....	a	4	3	3	S	Leeds United.....	a	4	1
12	M	Tottenham Hotspur .....	a	2	2	5	M	Preston North End.....	h	3	1
17	S	Norwich City.....	h	4	0	10	S	Liverpool .....	h	5	0
24	S	Luton Town .....	a	0	2	17	S	Newcastle United.....	a	1	3
						20	Tu	Burnley.....	a	0	3
Oct. 1	S	Plymouth Argyle.....	h	0	1	24	S	West Bromwich Albion.....	h	2	2
8	S	Blackburn Rovers .....	a	2	1	Oct. 1	S	Birmingham.....	a	2	2
15	S	Millwall.....	h	2	1	8	S	Manchester United.....	h	2	0
22	S	Manchester City.....	a	2	3	15	S	Bury.....	a	2	3
29	S	Sheffield Wednesday.....	h	0	0	22	S	Huddersfield Town.....	h	2	1
						29	S	Everton .....	a	1	2
Nov. 5	S	Swansea Town.....	a	2	1	Nov. 5	S	Chesterfield .....	h	1	1
12	S	Chesterfield .....	h	1	1	12	S	Wolverhampton W. ....	a	0	1
19	S	Tranmere Rovers.....	a	2	0	19	S	Aston Villa.....	h	2	1
26	S	West Ham United.....	h	3	1	26	S	Manchester City.....	a	0	0
Dec. 3	S	Bury.....	a	2	2	Dec. 3	S	Derby County.....	h	2	4
10	S	Bradford.....	h	3	1	10	S	Blackburn Rovers.....	a	2	3
17	S	Fulham .....	a	2	1	17	S	Blackpool .....	h	0	4
24	S	Nottingham Forest.....	h	0	1	24	S	Bolton Wanderers.....	a	1	0
26	M	Southampton .....	h	5	1	27	Tu	Burnley.....	h	0	2
27	Tu	Southampton .....	a	2	2	31	S	Leeds United.....	h	0	2
31	S	Newcastle United.....	a	0	0						
1939.						1939.					
Jan. 2	M	Burnley.....	h	1	1	Jan. 7	S	Freston North End.....	a	1	2
7	S	F.A. Cup (Third Round)....	a	2	1	14	S	Liverpool .....	a	3	1
14	S	Blackpool .....	a	2	1	21	S	Blackpool .....	a	0	3
21	S	West Bromwich Albion.....	h	1	1	28	S	West Bromwich Albion.....	a		
		F.A. Cup (Fourth Round)....	h	2	0						
28	S	Manchester City.....	h	2	0	Feb. 4	S	Birmingham.....	h		
		Luton Town.....	h			11	S	Manchester United.....	a		
Feb. 4	S	Plymouth Argyle.....	a			18	S	Bury.....	h		
11	S	F.A. Cup (Fifth Round)....				25	S	Huddersfield Town.....	a		
		Grimsby Town .....	h								
18	S	Millwall.....	a			Mar. 4	S	Everton .....	h		
25	S	Manchester City.....	h			4	S	F.A. Cup (Sixth Round)....			
Mar. 4	S	Sheffield Wednesday.....	a			11	S	Chesterfield .....	a		
11	S	F.A. Cup (Sixth Round)....				18	S	Wolverhampton W.....	h		
18	S	Swansea Town.....	h			25	S	Aston Villa.....	a		
25	S	Chesterfield .....	a			25	S	F.A. Cup (Semi-Finals)....			
25	S	Tranmere Rovers.....	h			April 1	S	Manchester City.....	h		
		F.A. Cup (Semi-Finals)....				8	S	Derby County.....	a		
April 1	S	West Ham United.....	a			10	M	Stoke City.....	h		
7	F	Burnley.....	a			15	S	Blackburn Rovers.....	h		
8	S	Bury.....	h			22	S	Sheffield Wednesday.....	h		
15	S	Bradford.....	a			29	S	F.A. Cup (Final).....			
22	S	Fulham .....	h			29	S	Stoke City.....	a		
29	S	Coventry City.....	a								
29	S	F.A. Cup (Final).....									
May 6	S	Tottenham Hotspur.....	h								

## OUR NEXT HOME MATCHES

Date Day Opponents Kick-off  
**Feb. 4 Sat. v. Birmingham Res. 3.0**  
 (Central League)

**Feb. 11 Sat. v. GRIMSBY TOWN 3.0**  
 (F.A. Cup—5th Round)

## L.M.S.

## CHEAP TRIPS BY L.M.S. FROM SHEFFIELD

## SPECIAL EVENING EXCURSION

SATURDAY, FEBRUARY 4th.

TO HALIFAX AND BRADFORD (1/7).

Depart 5.47 p.m.

Return from Bradford (Exchange) at 11.20 p.m.  
and Halifax at 11.40 p.m.

## SUNDAY, JANUARY 29th—

Bedford (6/3), London (9/-) ... \*10. 0 a.m.  
 Huddersfield (2/8), Marsden (3/2), Heckmondwike  
 (3/2), Halifax (3/2), Sowerby Bridge (3/2), Hebden  
 Bridge (3/8), Todmorden (3/8), Burnley (4/2) ... 10. 5 a.m.  
 Leicester (4/2), Nottingham (3/2) ... 11. 5 a.m.  
 Normanton (2/8), Leeds (3/2), Bradford (3/2) ... 12.13 p.m.  
 Leicester (4/2), Nottingham (3/2) ... 1.35 p.m.

## MONDAY AND TUESDAY, JANUARY 30th and 31st—

Leicester (6/3) (Leicester Steeplechases) ... 11. 0 a.m.

## SUNDAY, FEBRUARY 5th—

Chesterfield (1/4), Trent (3/2), Beeston (3/2), Notting-  
 ham (3/2), Loughboro' (3/8), Leicester (4/2) ... 11k25 a.m.  
 Chesterfield (1/4), Derby (3/2), Burton (3/8), Birm-  
 ingham (4/9) ... 12. 5 p.m.  
 Huddersfield (2/8), Marsden (3/2), Heckmondwike  
 (3/2), Halifax (3/2), Sowerby Bridge (3/2), Hebden  
 Bridge (3/8), Todmorden (3/8) ... 12.13 p.m.  
 Normanton (2/8), Leeds (3/2), Bradford (3/2) ... 1. 0 p.m.

## EACH THURSDAY AND SATURDAY UNTIL FURTHER NOTICE—

London (14/6) ... 7.15 a.m.  
 Birmingham (7/9), Worcester (9/6), Cheltenham Spa  
 (10/6), Gloucester (10/6) ... 8. 5 a.m.

## EACH SATURDAY UNTIL FURTHER NOTICE—

Carlisle (11/6), Glasgow (16/9), Greenock (17/9),  
 Gourock (18/3), Dunoon (18/9), Rothesay (19/2),  
 Galashiels (14/6), Edinburgh (16/9) ... 12.15 a.m.

## EACH SUNDAY UNTIL FURTHER NOTICE—

Chesterfield (1/4), Derby (3/2), Burton (3/8), Birm-  
 ingham (4/9), Coventry (5/3) ... 10k50 a.m.  
 Normanton (2/8), Leeds (3/2) ... 12.25 p.m.

k—Light Refreshments served.

\*—Corporation vehicles meet return train.

FOR FULL PARTICULARS, SEE HANDBILLS AT L.M.S.  
STATIONS AND AGENCIES.

— CUT THIS OUT FOR REFERENCE —



# PLATE and SHEET GLASS MERCHANTS

**GLASS** BEVELLING - - SILVERING  
EMBOSSING AND SANDBLASTING  
BRILLIANT CUTTING - BENDING - VENTILA-  
TORS AND DRILLING - SHELVES AND TABLE  
TOPS - LEADED LIGHTS

Glass Signs, Re-silvering, Armour Plate Glass,  
Greenhouse Glass, Decorative Mirrors and Clocks,  
Glass Aquarium Tanks, Bathroom Fitments, etc.

Old and defective Mirrors re-silvered and  
modernized.

MIRROR  
MANUFACTURERS

Motor Screens in Safety Glass fitted while  
you wait.

ALL KINDS OF FANCY AND  
ORNAMENTAL GLASS

GLASS WALL PANELLING for BATH-  
ROOMS, LABORATORIES, PUBLIC  
BUILDINGS, ETC.

**ELLIS PEARSON & CO.,**  
**CORPORATION ST. - - SHEFFIELD, 3**

Phone 20208 (2 lines).

Telegrams: "Mirrors, Sheffield."

YOUR NEXT OUTING travel by

## BEAUCHIEF COACHES

SHEFFIELD'S LUXURY WIRELESS FLEET

Quotations  
upon  
Application

WE CARRY YOUR TEAMS . . . . .  
WHY NOT LET US CARRY YOU ?

**Abbey Lane Motor Services, Ltd.**

City Office : 3, LEOPOLD STREET, SHEFFIELD 1. Tel. 26095.

Regd. Office : BEAUCHIEF, SHEFFIELD 7. Tel. 70028 (2 lines).

"BETTER TRAVEL BY BEAUCHIEF"

## SCOREBOARD

RED INDICATOR					WHITE INDICATOR				
	CLUBS	K.O.	Half Time	Final		CLUBS	K.O.	Half Time	Final
A	CHESTERFIELD ..... BURY.....	2.45	1-0		A	CHELSEA ..... MANCHESTER UNITED...	3.0		
B	TRANMERE ROVERS..... WEST HAM UNITED.....	2.45	2-0		B	EVERTON ..... HUDDERSFIELD TOWN..	3.0		
C	ASTON VILLA ..... ARSENAL.....	2.45	0-1		C	GRIMSBY TOWN..... BLACKPOOL.....	3.0		
D	DARLINGTON..... DONCASTER ROVERS....	2.45	1-2		D	LEEDS UNITED..... LIVERPOOL .....	3.0		
E	LINCOLN CITY ..... CREWE ALEXANDRA....	2.45	1-1		E	PRESTON NORTH END... BIRMINGHAM .....	3.0		
F	BRADFORD ..... FULHAM .....	3.0			F	STOKE CITY..... DERBY COUNTY .....	3.0		
G	BURNLEY ..... NORWICH CITY.....	3.0			G	SUNDERLAND ..... BRENTFORD .....	3.0		
H	COVENTRY CITY..... NOTTINGHAM FOREST....	3.0			H	WOLVERHAMPTON W.... PORTSMOUTH .....	3.0		
I	MANCHESTER CITY..... BLACKBURN ROVERS....	3.0			I	BARNLEY ..... CHESTER .....	3.0		
J	PLYMOUTH ARGYLE..... MILLWALL.....	3.0			J	HARTLEPOOLS UNITED. ROTHERHAM UNITED ...	3.0		
K	SOUTHAMPTON..... NEWCASTLE UNITED ...	3.0			K	STOCKPORT COUNTY .... HULL CITY.....	3.0		
L	TOTTENHAM HOTSPUR... WEST BROMWICH A.....	3.0			L	WREXHAM ..... YORK CITY .....	3.0		
M	BOLTON WANDERERS.... LEICESTER CITY .....	3.0			M	SWANSEA TOWN..... SHEFFIELD WED.....	3.0		
N	CHARLTON ATHLETIC.... MIDDLESBROUGH .....	3.0			N	WEST BROM A. RES: ... SHEFFIELD UNITED RES.	3.0		

### THE REGENT

TO-DAY

CRIME SCHOOL (A)

with the "Dead End Kids" and  
Humphrey Bogart.

The Ritz Brothers in

THREE MEN AND A GIRL (U)

NEXT WEEK from 1.30 p.m.

CHARLES BOYER

Sigrid Gurie & Hedy Lamarr in

ALGIERS (A)

Jack Oakie in "Affairs of Annabel" (U)

### THE EMPIRE

Nightly 7-30 (Fridays at 8).

Jessie Matthews and  
Sonnie Hale

In a New Musical Comedy

I CAN TAKE IT

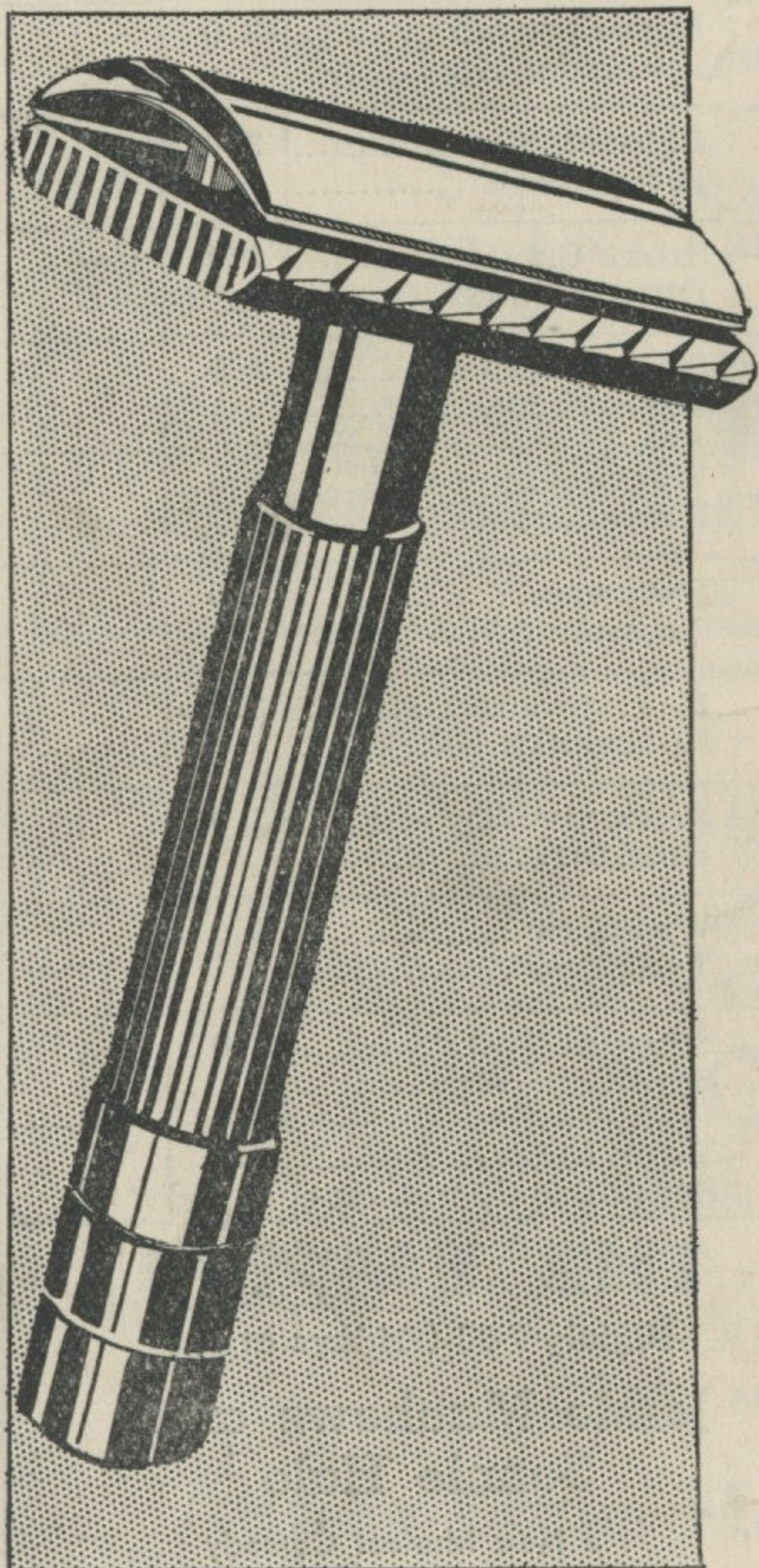
MATINEES : Thursdays & Saturdays at 2-30.

Box Office 10 to 10. 'Phone 25121.



# "WARDONIA"

## RAZOR HOLDER FREE!



THIS "WARDONIA"  
RAZOR HOLDER  
IS YOURS FREE  
WITH EACH 1/- PACKET  
OF "WARDONIA"  
BLADES PURCHASED.

"WARDONIA"  
BARREL-HOLE BLADES  
The New "Wardonia" Barrel-Hole  
Blade with mechanically stiffened  
durable edges ensures  
keen, clean and close  
shaves.

Sold in  
packets  
of

4 for 1/-  
10 for 2/6



SPEND **1/** TO-DAY ON YOUR WAY HOME

Sole  
Makers:

**THOMAS WARD & SONS LTD.**  
WARDONIA WORKS, SHEFFIELD, 1, ENG.