

No. 11

PRICE
TWO PENCE



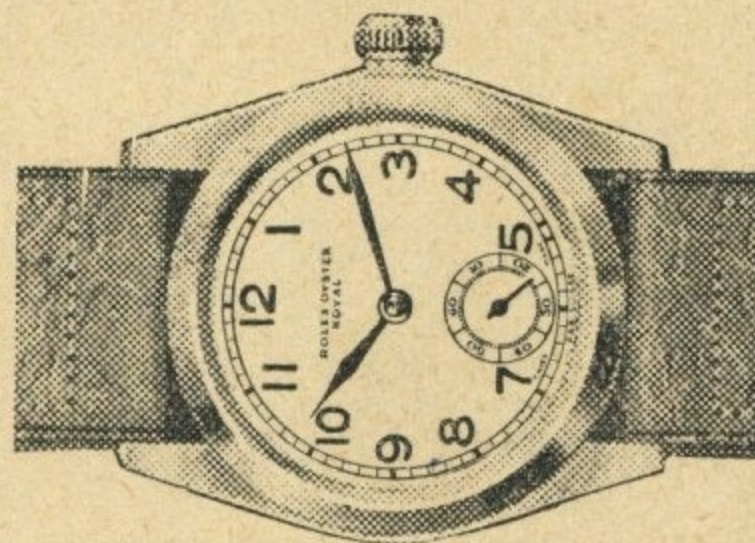
NORWICH CITY
v.
LUTON TOWN

PROGRAMME

Saturday,
December 31st,
1938.

No other wrist watch

has passed 21 days' test submerged in water at the National Physical Laboratory at Kew. It is Watertight—Dustproof—Anti-magnetic. The greatest variation of temperature or position cannot affect the accuracy of the ROLEX 'OYSTER.' A Rolex was worn by Sir Malcolm Campbell on his record-breaking motor-car and speed-boat runs.



ROLEX
"OYSTER"
WRIST WATCHES

**ROLEX Royal Oyster
Stainless Steel 8 gns.**

**Junior Sports Model
Stainless Steel 5 gns.**

SOLE AGENTS FOR NORWICH

Write for latest illustrated booklet.

WINSOR BISHOP & CO.

41 & 43 LONDON STREET · NORWICH

AFTER THE MATCH HAVE YOUR TEA AT BUNTINGS

EXAMPLES

From our varied
Menu:

**DAILY
COMPLETE
TEA AT**
9^d.

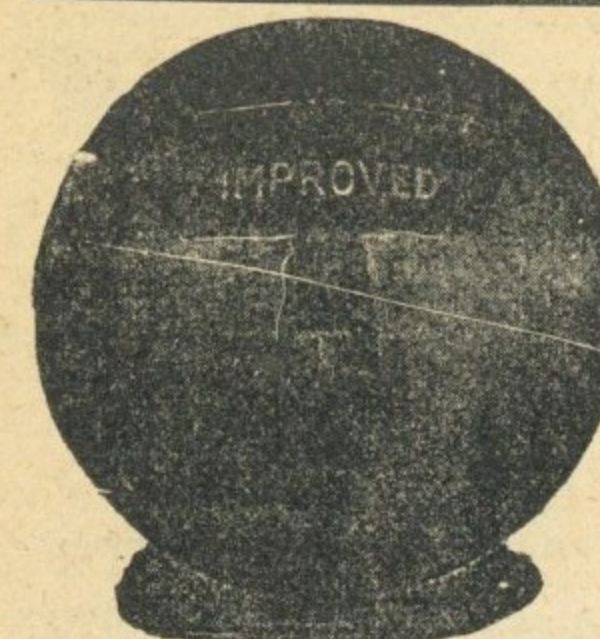
Pot of Tea
Brown or White
Bread and Butter
Fillet of Plaice and Chips

**SPECIAL
SATURDAY
TEA AT**
1/3

Pot of Tea
Brown or White
Bread and Butter
Steak and Chips

Take one of our SPECIAL
6d. Cakes home for the week
end.

BUNTINGS RESTAURANT
St. Stephen's Corner
NORWICH



R. G. PILCH
EVERYTHING
FOR
EVERY SPORT
3 & 5, Brigg St. - Norwich

NORWICH CITY FOOTBALL CLUB, LTD.

Members of The Football Association, Football League.
Norfolk County Football Association, Southern League and Southern League (Mid-week Section).

President: RUSSELL J. COLMAN, Esq.

Vice-Presidents: E. H. BARCLAY, Esq., SIR HENRY HOLMES.

Directors:

J. F. WRIGHT, Chairman. R. G. PILCH, Vice-Chairman.
E. C. BOND. W. H. H. CLARKE. R. G. FREELAND. D. W. P. GOUGH.
J. W. HOWES. N. W. HOWLETT. C. T. JOICE. H. G. SANDS.

Secretary: D. J. CLARKE.

R. YOUNG, Team-Manager & Trainer

D. LOCHHEAD, Assistant Trainer and Chief Scout.

A. HAWES, Assistant Trainer.

Ground: CARROW ROAD.

Colours: SHIRTS: YELLOW & GREEN HALVES; BLACK KNICKERS.

Stile Attendants: Red Lapel Badges, Gold Lettering. Ground Stewards: Yellow Coats, Green Badge.

Registered Office: CARROW ROAD. Telephone: Norwich 1514.

Season Ticket Holders are asked to bring
their books when attending matches. They
cannot be admitted unless their Season
Ticket Book is produced.

SEATS CAN BE BOOKED AT
The Club's Office, Carrow Road, and at
Messrs. Howlett's, The Walk.
Lists close at 12.30 on day of match.

Any complaints of incivility, lack of attention, etc., should be addressed to "The Secretary, Norwich
City Football Club, Ltd., Carrow Road, Norwich."

WHATEVER YOUR SPORT
VISIT
THE SPORTS EMPORIUM

UNBEATABLE FOR VALUE, QUALITY AND SELECTION

R. G. PILCH - - NORWICH

TEL.
984

An Economy and a Safeguard!

25 VITAL POINTS ON YOUR CAR EFFICIENTLY SERVICED

15/- UP TO 8 H.P. or OVER 8 H.P. 20/-

- | | | |
|---|--|--|
| 1 Give Car careful road test. | 12 Test front wheel alignment with M.E. Alignment Gauge and correct if necessary. | 19 Examine tyres, remove flints, check and correct tyre pressures; report defects, if any. |
| 2 Tune up engine generally. | 13 Test brakes on Bendix-Cowdrey Tester. | 20 Correctly focus all lamps by M.E. (Registered Design) Focussing Screen. |
| 3 Thoroughly clean down engine. | 14 Hoist car on lift and lubricate throughout by high pressure greasing plant. | 21 Test battery and add distilled water if necessary. |
| 4 Adjust valve tappets, if adjustable. | 15 Check oil levels in gear-box and rear axle, and add any oil required (oil charged extra). | 22 Clean and grease battery terminals. |
| 5 Clean spark plugs and positively test efficiency. | 16 Examine and tighten road wheels. | 23 Examine ignition, adjust contact breaker. |
| 6 Examine and adjust clutch pedal. | 17 Test steering and inspect connections. | 24 Blow out and clean dynamo commutator; check charging rate. |
| 7 Flush and refill radiator. | 18 Inspect and test shock absorbers and springs. | 25 Grease door locks and hinges. |
| 8 Drain engine and refill with oil specially recommended by car makers (oil extra). | | |
| 9 Clean oil filter, if external. | | |
| 10 Clean petrol filters. | | |
| 11 Clean Carburettor and adjust slow running. | | |

THERE IS ALWAYS SOMETHING TO INTEREST
THE MOTORIST IN OUR SHOWROOMS
OVER 500 NEW AND USED CARS IN STOCK

MANN EGERTON & CO LTD

PRINCE OF WALES ROAD - NORWICH

'Phone: (Day and Night) 480

Also LONDON - IPSWICH - BURY ST. EDMUNDS - LOWESTOFT

PIONEERS OF SOUND AMPLIFICATION

Prominent users of our EQUIPMENT in this City:—

Norwich City F.C., 11 years.	Eastern Counties Omnibus Co., Ltd.	Norwich Corn Hall.
Norwich Cathedral.	Samson & Hercules House.	Holm Close County Club.
Norwich Catholic Cathedral.	Norfolk County Schools A.A.	Waterloo Park.
Norwich Corporation.	Norfolk Railway Hotel.	Chapel Field Gardens.
Norwich Speedways, Ltd.	Castle Hotel.	Poor Law Institution.
Norwich Sack & Bag Co., Ltd.	Deacons Restaurant.	Whit Charity Sports.
Norwich Skating Rink.	Waggon & Horses Hotel.	Brickmakers Arms.

SIX ENGAGEMENTS FOR ROYALTY.

BROADCAST & ACOUSTIC EQUIPMENT CO., LTD.

(A. W. Giles, F.I.M.T., M.I.W.T., Managing Director),

Manufacturers of High Fidelity Amplifiers and ELECTRO-ACOUSTICS.

'Phone and 'Grams 3170 BEAUMONT CHAMBERS, DUKE STREET, NORWICH

OUR VISITORS TO-DAY.

(C.J.F.)

A stiff hurdle awaits the City this afternoon in their game with Luton. Two points are essential if they are to clear of the two bottom positions and I am afraid they will find this no easy task, for Luton, who won their three holiday games, are playing good forceful football at the present time. Mr. Neil McBain must be very pleased with the form shown by young Billington, who superseded Jack Vinall as centre-forward. He has been a consistent scorer since he gained his place in the League side a month or so ago. As he was playing as an amateur for Waterlow's last season he has come to the front very quickly.

Continued on page Seven

FOUNDRY BRIDGE CAFE

TWO MINUTES FROM THORPE STATION.

SEVEN MINUTES FROM THE NEW FOOTBALL GROUND.

DINNERS, TEAS and FISH SUPPERS

AT REASONABLE CHARGES.

ONLY THE BEST NORFOLK
MEAT SERVED.

MARK NATTRASS,
Proprietor.

"DON'T ONLY HOPE FOR THE BEST"

BUT COME AND GET IT

FROM

A. COLIN BROWN, M.P.S.

ROSARY CORNER PHARMACY
102, THORPE RD., NORWICH

A large range of the Well-known

"UCAL" PRODUCTS OF REPUTE

are always in Stock.

ARE YOU

A

CONFECTIONER - GROCER
GENERAL SHOPKEEPER :
STATIONER or an IRONMONGER

or Interested in

TOYS OR FANCY
GOODS

?

THIS ADVERTISEMENT IS TO REMIND YOU THAT

LEVERIDGE'S OF TIMBERHILL

ALWAYS HAVE SOMETHING TO INTEREST YOU. (WHOLESALE ONLY)

FYFFES
BANANAS

"CANARIES
SOMETIMES
SING"

... Here's hoping success will call the tune throughout the season. Fyffes will help you keep your end up at all seasons—they're both heating and sustaining. Slip a few in your pocket—but be sure they are Fyffes. Look for the Blue Label.

L.N.E.R.

RETURN TICKETS AT SINGLE FARE

FOR

4 PLAYERS IN SPORTS OR 8 ADULT PASSENGERS
AND PASTIMES TRAVELLING TOGETHER

If you are the Secretary of a Sports or Social Club, the cheap facilities shown in the special booklet at L.N.E.R. Stations and local Offices will appeal to you

OUR VISITORS TO-DAY—continued.

Last season Luton were a free scoring side, but unfortunately they were rather let down by their defence. To remedy this, they signed on Dunsmore, a full back from Hibernian, the Scottish League side. The signing of this player proved to be a sound investment for he has considerably stiffened the defence this season.

A win to-day will give the Canaries great confidence for their Cup-tie against Manchester City next week, so let's give them all the encouragement we can this afternoon.

The side to represent Luton will probably be as follows:—

Coen, J. (Goal). Joined Luton from Bournemouth and in five seasons has now made over one hundred appearances for them. Has had experience with Celtic, Clydebank and Guildford. Weight, 13 st. Height, 5 ft. 10½ ins.

King, T. (Right back). Was put on the transfer list at the close of last season and then in June was offered terms. Has also seen service with Notts County in 1934. Born, Nottingham. Weight, 11 st. Height, 5 ft. 8½ ins.

Dunsmore, T. (Left back). Transferred from Hibernian with a big reputation, and has proved a very good capture. Weight, 12 st. Height, 5 ft. 9 ins.

Continued on page Nine

AT HOME
OR AWAY

Fitness Wins

LET

ELECTRICITY

KEEP YOU FIT WITH
PERFECT COOKING - CONSTANT HOT WATER
HYGIENIC REFRIGERATION - MODERN HEATING

CITY OF NORWICH ELECTRICITY DEPT.
DUKE STREET REEPHAM WROXHAM
WYMONDHAM

DO YOU KNOW?

That owing to a favourable sheep breeding season, Norfolk Lamb are more plentiful this year

That Farmers are consequently selling lambs and sheep at reduced prices.

That YOU get the advantage of these reduced prices if you visit

"STOCKINGS," 26, St. Stephen's Street (Telephones:—84 and 534)

HELP THE FARMER !! By increasing the demand for his product.

HELP YOURSELF !! By saving money. (Norfolk Lamb does not shrink so much in cooking, therefore goes further).

OUR VISITORS TO-DAY—continued.

Finlayson, J. (Right half). In his fourth season with Luton. Played at inside right for Motherwell and then went to Cowdenbeath and Clapton Orient, became a half-back with the latter club and later found himself at full back. Made thirty-nine appearances for the first team last season. Weight, 12 st. Height, 5 ft. 11 ins.

Nelson, J. (Centre half). Made seventy-two appearances for Preston and then went to Wolverhampton. Joined Luton in 1935. Captained Luton during the last two seasons. A very good centre-half indeed. Born in Lancashire. Weight, 12½ st. Height, 6 ft.

Roberts, F. (Left half). Previous club Birmingham. Completes a very good half-back line. Weight, 11 st. 7 lbs. Height, 5 ft. 8 ins.

Clark, C. (Outside right). Joined Luton from Queen's Pank Rangers. Has played in all five forward positions. Is only twenty-one years of age. Weight, 11 st. 5 lbs. Height, 5 ft. 7 ins.

Redfern, W. (Inside right). After assisting Liverpool Marine joined Newry. Luton secured his services just over a year ago and he scored two goals in his first match. Weight, 12 st. Height, 5 ft. 11½ ins.

Continued on page Eleven.

The Grocers
of
Enterprise

Tel.:
Norwich
808

F. R. UNDERHILL & SON

For
Quality

21 THE WALK, NORWICH

BRANCHES IN NORWICH

24, BRIDEWELL ALLEY

21, ST. STEPHEN'S STREET

FOR
CAKES & PASTRIES

GO TO

MATTHE'S
LIMITED

CATERERS AT CARROW ROAD FOOTBALL GROUND

36, MAGDALEN STREET

7, BACK OF INNS

24, LOWER GOAT LANE

WE SPECIALISE IN

PICTURE FRAMING

: ARTISTIC PICTURES

MIRRORS

:

STATUETTES, Etc.

:

LEVETON & SONS

11, ORFORD PLACE

(Phone 1733)

NORWICH

OUR VISITORS TO-DAY—continued.

Billington, F. (Centre forward). Since taking over the leadership from Vinall has scored many goals. Last season was an amateur with Waterlow, with whom he scored nearly one hundred goals. Weight, 11 st. 8 lbs. Height, 5 ft. 10 ins.

Connelly, E. (Inside left). Secured from Newcastle last March for a large transfer fee. Has done much to make the forward line the success it is. Weight, 10 st. Height, 5 ft. 7 ins.

Stephenson, G. (Outside left). Now in his fifth season with Luton. Played for Durham City and Villa Park and Park Avenue before joining Luton. Born in Durham. Weight, 12 st. Height, 5 ft. 9 ins.

BUILDERS AND FACTORY SUPPLIES

TOOLS FOR ALL TRADES

FIRST QUALITY SHEFFIELD CUTLERY : PRECISION TOOLS : STOVES
RANGES : BATHS. Quotations for ROOFING & FENCING OF ALL KINDS
FREE DELIVERY ALL DISTRICTS.

R. J. PRYCE & CO.

Telephone 3072.
22/24, COLEGATE, NORWICH.
SUFFOLK RD., LOWESTOFT.
Telephone 764.

HIPPODROME

NORWICH

B. & J. THEATRES, LTD.

Telephone 3358/9

6.30

TWICE NIGHTLY.
MATINEES DAILY at 2.30.

8.45

EAST ANGLIA'S GREATEST PANTOMIME

CINDERELLA

And her ILLUMINATED COACH drawn by Beautiful MINIATURE PONIES.

MARGARET PURDON as Prince Charming. : KLIFTON COURT as Buttons.
GEORGE ELLISIA as Ugly Sister. RENE BECK as Cinders. Five X Rays.
Hank the Mule. Rosebud Babes. Leo the Lion. The Casino Girls and Brilliant Cast.

Commencing Monday, January 9th (FOR ONE WEEK ONLY)—BABES IN THE WOOD—A Pantomime built for Fun—Twice Nightly with Matinees Monday, Wednesday and Saturday. Book your Seats Now and avoid disappointment.

Box Office Open 10 a.m. to 10 p.m. Prices 6d. to 2/6. All Seats Bookable with exception Pit and Balcony.

GRINLING 6 SWAN LANE NORWICH

FOR SMART MEN'S WEAR

Agent for "VAN HEUSEN" COLLARS and VANTELLA SHIRTS

FREE SEASON TICKETS

Would you like a Free Season Ticket for the Grand Stand or its Cash Value. You can obtain one by using the

"NORFOLK" Razor Blades

Inside each 6d. packet (6 blades) is a card giving the name of a club in the 2nd Division. Save these cards until you have obtained the complete set of Clubs in the Division, and this magnificent gift is then yours. Why not interest your friends, so that you can then change and interchange the cards to facilitate completion of your set.

|||
The
'NORFOLK'
BLADE
gives you
delightful
Shaving,
and is on
Sale
everywhere.
|||

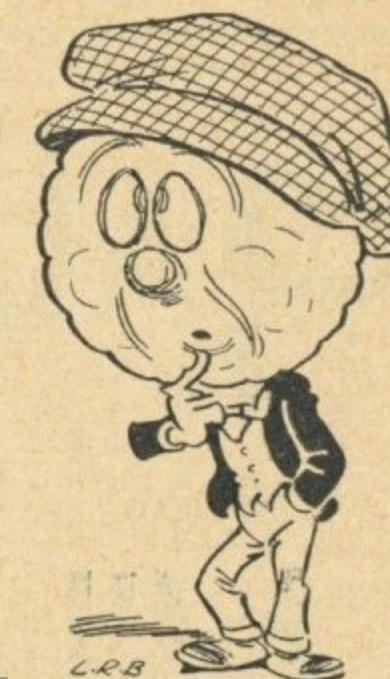


"Well, Bill, what are we going to get out of the Hat to-day?"

"Dunno. We must take pot luck."

"I'd rather take a pot of beer, especially at Quick's!"

J. W. QUICK, Wine Vaults
15 & 17, Castle Street - NORWICH



CANARY SEED.

The Programme Committee hope all their readers have had a happy Christmas and will have an even happier New Year. With sixteen inches of snow on the ground no one was surprised that the Christmas matches had to be postponed, but the English climate being what it is, there is a soft, warm spring rain and to-day's game may be played on a mud heap. (Apologies to the ground Staff, who have worked like trojans to get the place fit).

This programme being a "U" publication, I am unable to print my own opinion of the weather, but if the bombers that come from Germany are as bad as the weather that comes from that country we shall have a rough time in the next war.

Continued on page Eighteen.

BEFORE A AFTER
THE MATCH N THE MATCH
LUNCH D TEA

AT THE

MECCA CAFE

HAYMARKET NORWICH

HALF-TIME IS MILK-TIME

MILK IS STILL
UNDEFEATED AS AN
ENERGY-GIVER

Many of our best athletes train on **milk**—
they know its value as a refresher and **they**
realise how it builds muscle and bone. **Why**
not join the team?

Have a glass of milk at half-time and **another**
before you go home. It will refresh you **and**
help to keep you fit.

MILK IS ON SALE IN ALL
REFRESHMENT ROOMS
IN THE GROUND.

Issued by The National Milk Publicity Council (Inc.)
33, Gordon Square, London, W.C.1.

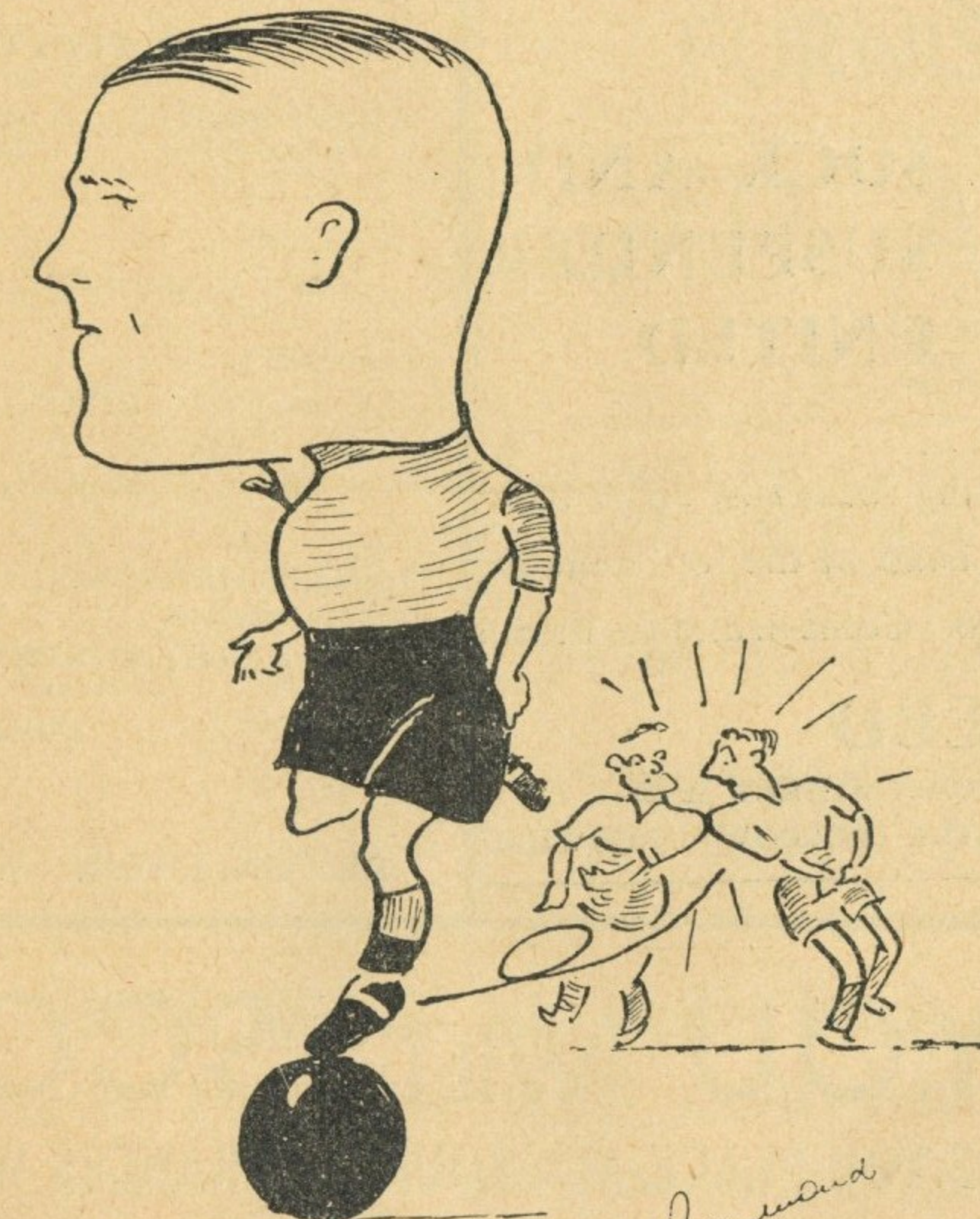
THE "KINGSWAY" CARROW BRIDGE

KING STREET

Proprietor:
ERNEST A. KEWLEY

CAR PARK

CYCLE PARK



W. FURNESS.

Who scored at Manchester and hopes to repeat this in the Cup-tie.

TOM STEVENSON

For FOOTBALL : GOLF : HOCKEY
BOXING : BADMINTON : FISHING

ONLY ADDRESS

SWAN LANE LONDON STREET
'Phone 1983. NORWICH

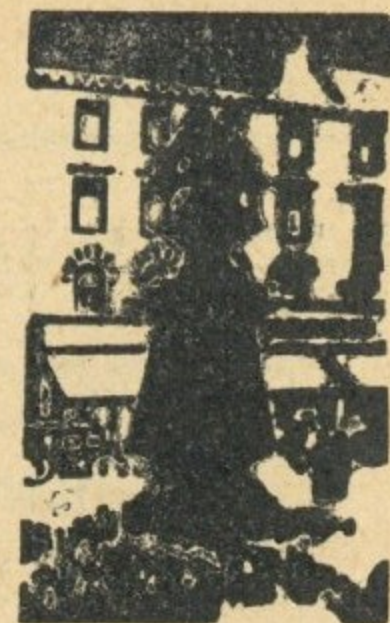


**SOCK AND
SUSPENDER
UNITED**

• Tenova self-supporting socks stay up of their own accord, for the band at the top contains Lastex yarn. 3/6 to 7/6. Come in and see them.

AUSTIN REED

38 LONDON STREET AND
15 CASTLE MEADOW · NORWICH



MODERN MEN'S WEAR

GOOD TAILORING.
EVENING CLOTHES.
HENRY HEATH HATS.
BURBERRY COATS.

SPORTS CLOTHING
JAEGER PURE WOOL
VANTELLA SHIRTS
VAN HEUSEN COLLARS

FINEST READY-TO-WEAR SERVICE

GREENS OF NORWICH

NORWICH CITY (Yellow & Green Shirts, Black Knickers)

K.O. 2.15 p.m.

- | | | | |
|----------------------------|----------------------------|-----------------------------|------------------------------|
| (1) HALL
Goal | (2) HALLIDAY
Right Back | (3) MACKRELL
Left Back | (6) SMALLEY
Left Half |
| (4) PROCTOR
Right Half | (5) BURKE
Centre Half | (10) FURNESS
Inside Left | (11) MANDERS
Outside Left |
| (7) FRIAR
Outside Right | (8) WARE
Inside Right | (9) O'REILLY
Centre | |
- Referee:—
Mr. W. E. ROSS-GOWER (London)
- Linesmen:—
Mr. E. C. ROBINSON (Red Flag)
Mr. A. T. FORD (Blue Flag)
- Next Saturday—
Norwich City
v.
Manchester City
F.A. Cup 3rd Round
K.O. 2.30.
- | | | | | |
|---------------------------------|------------------------------|------------------------------|------------------------------|-----------------------------|
| (12) STEPHENSON
Outside Left | (13) CONNELLY
Inside Left | (14) BILLINGTON
Centre | (15) REDFERN
Inside Right | (16) CLARK
Outside Right |
| (17) ROBERTS
Left Half | (18) NELSON
Centre Half | (19) FINLAYSON
Right Half | (21) KING
Right Back | |
| (20) DUNSMORE
Left Back | (22) GOEN
Goal | | | |



LUTON TOWN (White Shirts, Black Knickers)

F.L., Div. II.

FULL POINTS . . .

LEACH & SON (NORFOLK) LTD.

OIL · COLOUR · AND · HARDWARE
MERCHANTS

NORWICH AND GT. YARMOUTH

COMPLETE
YOUR COMFORT AND PLEASURE

BY
FURNISHING
AT

GEO. ATTOE & SONS

COMPLETE HOUSE FURNISHERS
AND UPHOLSTERERS

54 & 56 STUMP CROSS
NORWICH

REMOVALS ANY DISTANCE.
ESTIMATES FREE.
EASY TERMS CAN BE ARRANGED



YOU WILL SCORE

IF YOU PLACE ALL YOUR INSURANCES WITH THE

NORWICH UNION

INSURANCE SOCIETIES

With a Bank Book at your back you can
look forward with confidence

THE NORFOLK AND NORWICH (EAST ANGLIAN)
TRUSTEE SAVINGS BANK

For 122 years the best centre for saving.

HEAD OFFICE: SURREY STREET, NORWICH.

City Branches - 65, Magdalen Street and 36, St. Benedict's

DARLOW & CO. ORFORD HILL NORWICH
(Opposite Bell Hotel)

LOADERS of the
well-known Brands

"CASTLE"
"ORFORD"
"LIGHTNING"
"BIG-BAG"



GUN MAKERS
CARTRIDGE
LOADERS and
POWDER
MERCHANTS.

LIGHT GUNS a Speciality at Low Prices.

Apply for Catalogue. Exchanges made and Second-Hand Guns bought.

CANARY SEED—continued.

DO YOU KNOW ?

1. Which club, now in the First Division, finished below the City in Norwich City's first season?
 2. Which winger scored most goals for the Canaries?
 3. When the crowd stood on the new terraces at Carrow Road for the first time, why their weight did not cause the terraces to sink into the ground, as so many people predicted?
 4. Which player was an ever-present in Norwich City's first season?
 5. Which teams we have the best record against in the Second Division?
 6. How many local players appeared in the first team in City's first season?
- See Answers on Page 19 (opposite).

A NEW LEAF.

As usual, we look forward to the New Year with hope and one of these days we expect to be rewarded for our patience with a point won away from home. We have a hard struggle in front of us to avoid relegation this season, but the team has pulled us out of trouble in previous years and we have the utmost confidence that they will do so again.

We still have a good chance of pulling clear of the bottom teams and there is an old saying that things are never so bad but they might have been worse.

I was complaining of the snow and the cold weather last week to a friend, who said, "You were in the trenches in 1916, were you not?" and when I said I had that pleasure, he remarked, "It was much worse then."

I cast my mind back to that winter when we had snow and ice in October in northern France and shelling on the top of it and it reconciled me to snow in England with the Canaries near the foot of the League table.

THE ARCTIC EXPLORERS.

Under the Icelandic conditions over last week-end, the Newcastle United team qualified for the Polar medal. Their trip in nine days were as follows:—

BREECHES EXCLUSIVE TAILORING FOR LADIES & GENTLEMEN LIVERIES
SIDNEY LAIN & SON
4 REDWELL STREET - - NORWICH
'Phone - 1652

Newcastle—Swansea.
Swansea—Newcastle.
Newcastle—Plymouth.
Plymouth—Norwich.
Norwich—Newcastle.

I have no doubt the United players wish Plymouth Argyle were back in the Third Division. Our own trips are not far behind Newcastle's:—

Norwich—Manchester.
Manchester—Norwich.
Norwich—Bradford.
Bradford—Norwich.
Norwich—Newcastle.
Newcastle—Norwich.

ANSWERS TO QUESTIONS ON PAGE 18.

1. Brentford, with 35 points to City's 36 in 34 games.
2. Warnes, in 1933-34, scored 21 goals from the outside-right position.
3. Because 27,000 people on the terraces (full capacity) at 9 stone each, weigh 1,350 tons, or only three per cent. of the weight of earth (45,000 tons) in the terraces.
4. Punch McEwen, now chief scout of Arsenal, played in all 34 games. Ronaldson and Davie Ross appeared in 33 games and Billy Bushell and Bobby Muir in 32 games.
5. Fulham and Notts Forest. Our record against each team is 5 wins, 2 draws and 1 lost game.
6. Three. "Mooch" King of Catton, "Putt" Gooch of Lowestoft Town and Fred Bemment of Kirkley, the latter playing in 30 games. Bob Pointer of Catton was with the club, but did not play in a League game.
(If any of our readers have items suitable for this general knowledge column, relating to Norwich City, the Editor would be pleased to receive them.)

FOOTBALLERS WE HAVE NOT MET!

- The Player who says "after you" to his opponent.
- The Player who hooted himself in the dressing room.
- The Player who scored during the 2 minutes' silence.
- The Player who gave his Bonus to the disgruntled spectator.
- The Player who refused a cup final medal because he thought it looked common.
- The Player who scored twice in 2 minutes when his "Baby" howled from the Stand.
- The Manager who told The Directors where to get off.
- The Directors who told The Manager when to get off.
- The Spectators who told the Team where to go when they went off.
- The Team who thought what they might have told the Spectators before they went off.
- The Player who refused to stay at The Pier Hotel, Gorleston.**

PRESENTS THAT REALLY DO PLEASE!

CYCLAMEN PLANTS (Full of Flowers)
SOLANUMS (Full of Berries)
FERNS : PALMS : ARAUCARIAS
and Beautiful BOWLS OF BULBS.

SEE OUR WINDOWS.

TACON, COWELL & SONS
15, RAMPANT HORSE STREET
NORWICH 'Phone: NORWICH 993

WIN — LOSE — OR DRAW — GO HOME AND

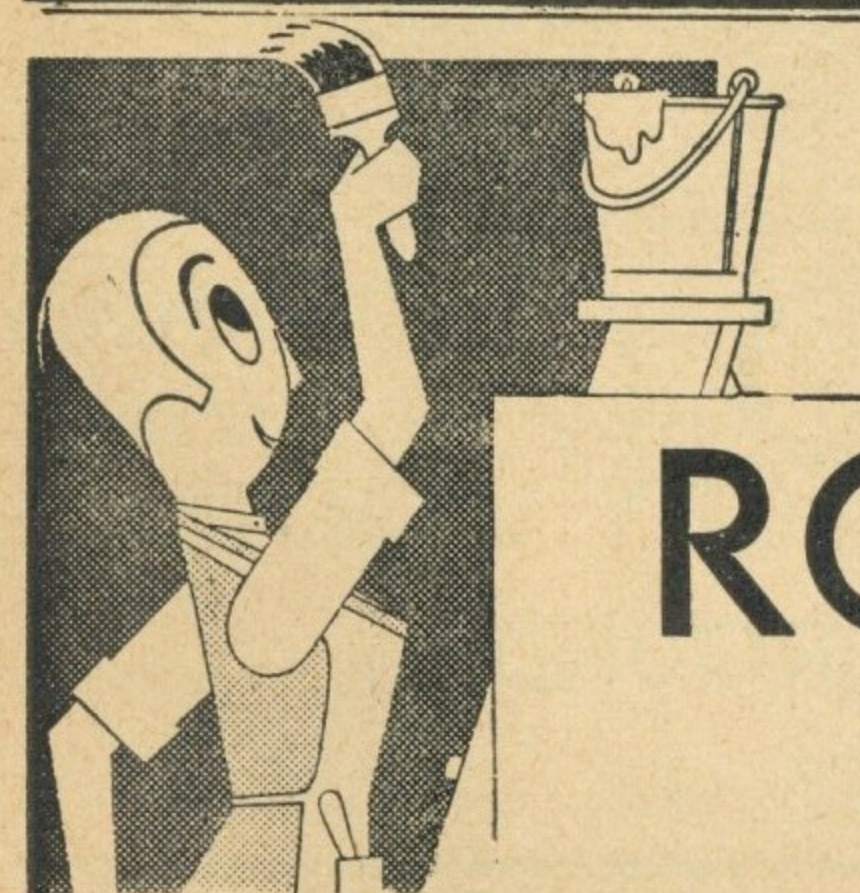
"SAY IT WITH FLOWERS" LANHAM & CO.

COURT FLORISTS

12, Prince of Wales Rd., 19, White Lion St. & 65, St. Stephen's St., Norwich.
Telephones: 2328 & 550

HALF-TIME SCORE INDICATOR

A—Exeter Res. v. Norwich C. Res.	M—Blackburn R. v. Chesterfield
B—Arsenal v. Huddersfield	N—Coventry City v. Tottenham
C—Birmingham v. Manchester Utd.	O—Fulham v. Tranmere Rovers
D—Blackpool v. Wolverhampton	P—Manchester City v. Bradford
E—Bolton W. v. Portsmouth	Q—Millwall v. Swansea Town
F—Brentford v. Everton	R—Newcastle Utd. v. Sheffield Utd.
G—Derby County v. Aston Villa	S—Notts Forest v. Burnley
H—Grimsby Town v. Sunderland	T—Sheffield Wed. v. West Ham Utd.
I—Leeds United v. Charlton A.	U—Southampton v. Bury
J—Leicester City v. Chelsea	V—West Brom. A. v. Plymouth A.
K—Liverpool v. Preston N.E.	W—Ipswich Town v. Exeter City
L—Middlesbrough v. Stoke City	



A. A. PALMER

75, ST. BENEDICT'S ST., NORWICH

AGENT FOR

ROBBIALAC
PAINTS



BREWERS BY
APPOINTMENT
TO THE LATE
KING GEORGE V.

STEWARD & PATTESON'S

CELEBRATED
ALES AND STOUT

BREWED FROM
ALL ENGLISH
MALT & HOPS

ON
SALE
IN ALL BARS
AT THE
NORWICH CITY FOOTBALL
GROUND

WHITE'S
RESTAURANT
QUEEN STREET
NORWICH
DIVER & SON, LTD., Proprietors

WORTHINGTON
PALE ALE ON DRAUGHT
LUNCHEONS : TEAS : SUPPERS
and SNACKS at POPULAR PRICES

FIRST ELEVEN FIXTURES—SEASON 1938—39.

1938.		Opponents	Gr'nd	F.	A.	1939.		Opponents	Gr'nd	F.	A.
Aug. 20	S	Ipswich*	...	H	1 1	Jan. 7	S	Third Rd. F.A. Cup			
" 27	S	Bradford	...	H	1 3			Manchester C.	H		
Sept. 1	Th.	West Brom. A.	...	H	2 3	" 14	S	Plymouth Argyle	A		
" 3	S	Luton Town	...	A	1 2	" 21	S	Sheffield U. (4)	...	H	
" 7	W	Notts Forest	...	A	0 1	" 28	S	Burnley	...	A	
" 10	S	Plymouth Argyle	...	H	2 1	Feb. 4	S	Tottenham H.	...	H	
" 17	S	Sheffield United	...	A	0 4	" 11	S	Southampton (5)	...	A	
" 24	S	Burnley	...	H	4 0	" 18	S	Swansea	...	A	
Oct. 1	S	Tottenham H.	...	A	1 4	" 25	S	Chesterfield	...	H	
" 8	S	Southampton	...	H	2 1	Mar. 4	S	Millwall (6)	...	A	
" 15	S	Swansea Town	...	H	3 0	" 11	S	West Ham Un.	...	H	
" 22	S	Chesterfield	...	A	0 2	" 18	S	Bury	...	A	
" 29	S	Millwall	...	H	0 2	" 25	S	Sheffield W. (S.F.)	...	H	
Nov. 5	S	West Ham Utd.	...	A	0 2	April 1	S	Fulham	...	A	
" 12	S	Bury	...	H	3 1	" 8	S	Blackburn Rov.	...	H	
" 19	S	Sheffield Wed.	...	A	0 7	" 10	M	Coventry City	...	H	
" 26	S	Fulham (1)	...	H	3 3	" 11	T	Coventry City	...	A	
Dec. 3	S	Blackburn Rov.	...	A	0 6	" 15	S	Tranmere Rov.	...	A	
" 10	S	Tranmere Rov. (2)	...	H	2 0	" 22	S	Manchester C.	...	H	
" 17	S	Manchester C.	...	A	1 4	" 29	S	West Brom. A. (F.)	...	A	
" 24	S	Bradford	...	A	0 2	May 6	S	Notts Forest	...	H	
" 27	T	Newcastle U.	...	A	0 4						
" 31	S	Luton Town	...	H							
		Newcastle U.	...	H							

* Denotes Jubilee Fund Match.
The Numbers 1, 2, 4, 5, 6, S.F. and F. refer to rounds in the F.A. Cup.

For good
Meat **ALGAR & SON**
BUTCHERS
'PHONES:
59 & 95 64, ST. STEPHEN'S, NORWICH

YOUNG MEN OF NORFOLK—

KEEP THE FLAG FLYING by joining the Modern Army. If you are unable to join the **REGULAR ARMY**, you can do your duty in helping towards the Defence of your Country by joining the **TERRITORIAL ARMY**

For full particulars, apply:—

ARMY RECRUITING OFFICES:—13, Thorpe Road, Norwich
or 283, Southtown Road, Gt. Yarmouth,

TERRITORIAL ARMY DRILL HALLS, All Saints Green, or
Chapel Fields, Norwich
or Nelson Road and York Road, Gt. Yarmouth

LAMBERTS TEAS

have been famous for quality for nearly a century.

ASK YOUR
GROCER
FOR A PACKET
TO-DAY.

F. LAMBERT & SON
Limited
HAY HILL - - NORWICH

FROST—AND BARRETT

(J. PYLE)

ENGLISH AND AMERICAN TOOL DEPOT

TOOLS in Great Variety for

CABINET MAKERS
ENGINEERS
PLASTERERS
MOULDERS
BRICKLAYERS
AND JOINERS

REAMERS, TAPS & DIES our speciality
SPADES - SHOVELS
HOES, FORKS, RAKES

3 ST. JOHN MADDERMARKE
and
3 LOBSTER LANE - NORWICH

COAL AND COKE

OF ALL
DESCRIPTIONS

BEST QUALITIES—LOWEST PRICES

WILLIAM GOULD & SON
117, Dereham Road - Norwich

TEL. 1689

RESERVES FIXTURES, 1938—39.

1938.		Opponents	Gr'nd F.	A.	1939.		Opponents	Gr'nd F.	A.
Aug. 27	S	Aldershot	...	A 4 2	Jan. 4	W	Folkestone*	...	A
" 31	W	Ipswich	...	A 0 0	" 14	S	Exeter City	...	H
Sept. 3	S	Folkestone	...	H 4 1	" 18	W	Dartford*	...	A
" 8	Th.	Ipswich	...	H 4 1	" 21	S	Cardiff City	...	A
" 10	S	Plymouth Argyle	...	A 0 3	" 28	S	Guildford	...	H
" 14	W	Guildford*	...	A 3 4	Feb. 2	Th.	Dartford*	...	H
" 17	S	Plymouth Argyle	...	H 2 1	" 4	S	Chelmsford	...	A
" 22	Th.	Colchester*	...	H 0 2	" 9	Th.	Portsmouth*	...	H
" 24	S	Arsenal	...	A 1 2	" 11	S	Cheltenham	...	H
" 29	Th.	Barry	H 2 2	" 18	S	Chelmsford	...	H
Oct. 1	S	Aldershot	...	H 1 0	" 23	Th.	Folkestone*	...	H
" 8	S	Bath City	...	A 1 3	Mar. 4	S	Bath City	...	H
" 12	W	Aldershot*	...	A 1 1	" 9	Th.	Aldershot*	...	H
" 15	S	Swindon Town	...	A 2 3	" 11	S	Gillingham	...	A
" 20	Th.	Tunbridge Wells*	...	H 0 0	" 25	S	Guildford	...	A
" 22	S	Torquay	...	H 4 1	" 30	Th.	Guildford*	...	H
" 29	S	Newport County	...	A 0 0	April 1	S	Swindon Town	...	H
" 31	M	Millwall*	...	A 1 5	" 7	F	Arsenal	...	H
Nov. 3	Th.	Cambridge U. (Fr.)	...	H 5 1	" 8	S	Folkestone	...	A
" 5	S	Colchester	...	H 1 5	" 10	M	Yeovil	...	A
" 10	Th.	Millwall*	...	H 4 0	" 11	T	Colchester	...	A
" 12	S	Worcester City	...	A 1 1	" 15	S	Tunbridge Wells	...	H
" 16	W	Tunbridge Wells*	...	A 1 2	" 20	Th.	Bristol Rovers	...	H
" 19	S	Gillingham	...	H 5 2	" 22	S	Torquay	...	A
" 23	W	Portsmouth*	...	A 1 1	" 26	W	Barry	A
" 26	S	Tunbridge Wells	...	A —	" 29	S	Cardiff City	...	H
Dec. 3	S	Newport County	...	H 3 0	May 4	Th.	Colchester*	...	A
" 10	S	Cheltenham	...	A 2 1	" 6	S	Bristol Rovers	...	A
" 17	S	Worcester City	...	H 2 0					
" 27	T	Dartford	...	H 4 0					
" 31	S	Exeter City	...	A					
		Yeovil	...	H					
		Dartford	...	A					

* Denotes "Mid-week" Section.
(Th.) denotes Thursday match.

WHATEVER MAKE OF CAR

NEW CARS. Distributors for Norfolk for Singer Cars and Vans. Authorised Stockists—Austin and Morris, but **any make supplied.**

USED CARS. A good selection of Popular Makes always in stock. Three months guarantee if over £50 in price. Exchanges and Deferred Terms arranged to suit customer's convenience.

SERVICE WORK. The most up-to-date Service Bay in East Anglia. All work carried out in accordance with makers' schedules and charges. Prompt Service.

PETROL & OIL SUPPLIES. The only Covered Filling Station in Norwich giving 4-Car Service from Six Electric Pumps. All oil supplies from sealed bottles.

CAR PARK. Fee (6 hours) 6d.

YOU REQUIRE— NEW or USED WE CAN SUPPLY

WHILE

OUR UP-TO-THE MINUTE WORKS AND SERVICE DEPARTMENTS

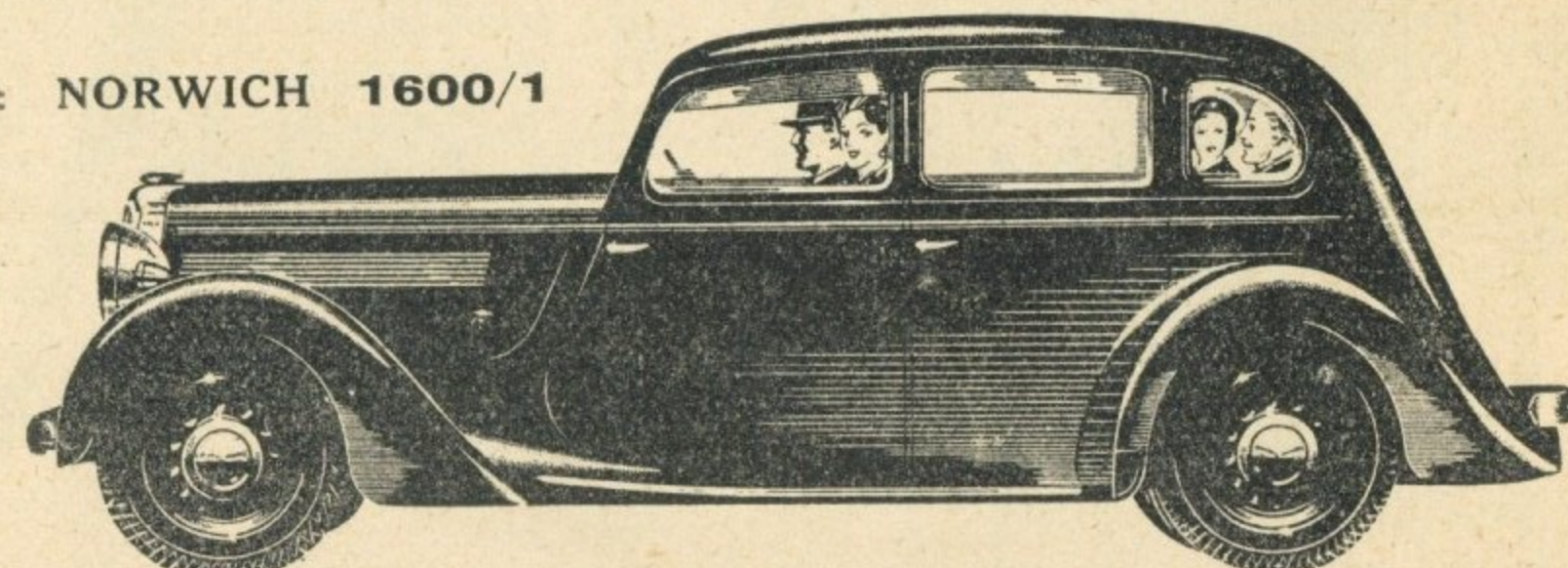
ARE NOTED FOR EFFICIENCY
AND REASONABLE CHARGES

The Services of our Experienced Staff
are available for consultation
ANY TIME — ANYWHERE

NORWICH MOTOR CO., LTD.

118-120, PRINCE OF WALES ROAD

'Phones: NORWICH 1600/1



The Car illustrated is the 1939 Singer Super-Twelve - Price £249
N-M-C FOR SUPER—SERVICE

For the very newest
ideas in the
Furnishing World

"WHERE QUALITY
COSTS LESS"

BOND FURNITURE

BONDS, All Saints Green, NORWICH.

LEAGUE TABLE - DIVISION II.

	P.	W.	D.	L.	W.	Home.		Away.			Goals			Pts.
						D.	L.	W.	D.	L.	F.	A.		
Blackburn Rovers	23	14	3	6	8	1	2	6	2	4	54	30	31	
Sheffield United	22	11	7	4	5	4	2	6	3	2	40	24	29	
Newcastle United	22	13	3	6	10	1	0	3	2	6	44	25	29	
West Brom. Albion	22	12	2	8	9	0	1	3	2	7	57	45	26	
Coventry	22	11	4	7	7	2	1	4	2	6	32	27	26	
Sheffield Wednesday	21	10	5	6	7	2	2	3	3	4	53	36	25	
Manchester City	22	11	3	8	7	0	4	4	3	4	59	46	25	
Tottenham Hotspur	22	9	7	6	7	5	0	2	2	6	36	30	25	
Luton Town	22	11	3	8	6	3	2	5	0	6	42	37	25	
Fulham	22	9	6	7	6	3	1	3	3	6	35	30	24	
Chesterfield	22	9	5	9	8	1	2	1	4	6	37	33	23	
West Ham United	22	9	4	9	7	2	3	2	2	6	40	32	22	
Bradford (Park Avenue) ..	22	7	8	7	5	5	2	2	3	5	38	40	22	
Burnley	23	6	8	5	8	2	2	0	4	7	28	34	22	
Millwall	21	8	5	8	6	2	2	2	3	6	36	30	21	
Plymouth Argyle	22	8	4	10	5	3	3	3	1	7	25	29	20	
Southampton	22	7	4	11	5	2	3	2	2	8	34	47	18	
Bury	22	6	6	10	4	3	5	2	3	5	31	44	18	
Swansea Town	21	3	9	9	2	5	4	1	4	5	24	45	15	
Nottingham Forest	22	5	5	12	3	2	5	2	3	7	27	49	15	
NORWICH CITY	21	6	1	14	6	1	3	0	0	11	25	53	13	
Tranmere Rovers	22	3	2	17	3	2	7	0	0	10	25	58	8	

ALLEN & DAWES

Proprietor:
A. C. HOLMES

FOR WATCHES AND CLOCKS

SEE WINDOWS OF
THE PRACTICAL WATCHMAKERS

9, SAINT GILES' STREET (Tel.: 224) NORWICH

SALOON COACHES
ARE AVAILABLE FOR

PRIVATE HIRE

AT

CHEAP RATES

ASK FOR A QUOTATION
FOR ANY SIZED PARTY

SEND YOUR PARCELS
BY OUR
**EXPRESS
PARCELS SERVICE**

AGENTS IN ALL TOWNS AND
VILLAGES IN EAST ANGLIA

Full particulars given in Company's Time
Table Booklets.

TRAVEL MORE
AND
PAY LESS!
BUY A
SEASON TICKET

Full particulars obtainable from any of the
Company's Offices.

WEEKLY TICKETS
AT
REDUCED RATES
ARE ISSUED FOR TRAVEL
ON CERTAIN SERVICES

Full particulars obtainable from any of the
Company's Offices.

DAILY COACH SERVICES

Are operated to BURY ST. EDMUNDS, CAMBRIDGE, LEICESTER,
LONDON, NEWMARKET & PETERBOROUGH.

EASTERN COUNTIES
OMNIBUS COMPANY LIMITED

HEAD OFFICE:—79, THORPE ROAD, NORWICH. 'Phone 2894-7
BOOKING OFFICES:—'Bus Station, Surrey Street, Norwich. „ 2898
York Hotel, Castle Meadow, Norwich. „ 2894-7
Thorpe L.N.E.R. Station, Norwich. „ 2894-7

FOR
PURITY

TOLLY
ALES & STOUT

Brewed from MALT & HOPS only

FOR
QUALITY

Norfolk Depot

BARWELL & SONS St. Stephen's Street, **NORWICH**

SOUTHERN LEAGUE

	P.	W.	D.	L.	F.	A.	Pts.
Guildford City	19	13	4	2	59	18	30
Arsenal	20	13	3	4	51	20	29
Bath City	21	11	6	4	32	27	28
Gillingham	22	12	4	6	39	35	28
Plymouth A. Res. ...	19	13	1	5	61	23	27
Colchester	16	13	0	3	41	12	26
NORWICH C. RES...	20	11	4	5	45	28	26
Yeovil & Petters U...	21	10	5	6	37	35	25
Bristol Rovers Res. ...	23	7	9	7	37	32	23
Cardiff City Res.	25	11	0	14	47	48	22
Tunbridge Wells R....	23	10	1	12	49	46	21
Cheltenham Town	19	9	2	8	39	40	20
Worcester City	19	7	5	7	32	37	19
Folkestone	21	9	1	11	29	39	19
Swindon T. Res.	23	8	3	12	35	53	19
IPSWICH T. Res. ...	21	6	6	9	34	32	18
Barry Town	22	7	4	11	33	48	18
Newport Co. Res.	22	6	4	12	36	59	16
Exeter City Res.	19	7	2	10	27	54	16
Chelmsford	17	5	4	8	27	34	14
Dartford	19	3	3	13	25	40	9
Torquay Res.	22	2	5	15	21	57	9
Aldershot Res.	17	3	2	12	20	39	8

SOUTHERN LEAGUE

(Mid-week Section)

	P.	W.	L.	D.	F.	A.	Pts.
Tunbridge Wells R....	8	3	1	4	19	11	10
Colchester	6	4	1	1	13	8	9
Aldershot Res.	8	3	2	3	15	13	9
Portsmouth Res.	6	3	2	1	10	9	7
Millwall Res.	7	2	3	2	13	15	6
Guildford City	4	1	0	3	7	6	5
NORWICH C. RES...	8	1	4	3	11	15	5
Dartford	4	2	2	0	7	6	4
Folkestone	7	1	5	1	7	19	3

OFFICIAL ATTENDANCES

Saturday, December 10th (Tranmere) ... 8,132
Saturday, December 17th (Worcester) ... 1,534

The NORWICH CITY HOUSE for PIANOS

Sole Agents for
BRINSMEAD
BROADWOOD
CHALLEN
CRAMER
ROGERS

For Cash, or most reasonable terms for
Hire Purchase.

W. HOWLETT & SON
MARKET PLACE - NORWICH

The Finest Collection in the Eastern Counties

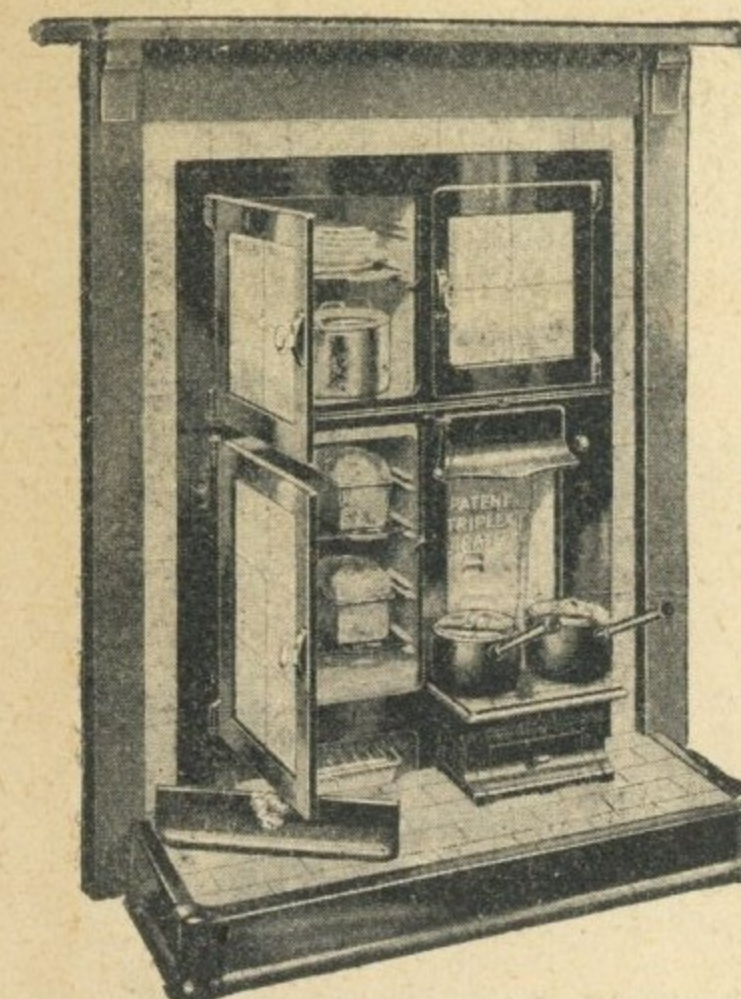
RADIO
GRAMO-
PHONES
and
RECORDS

GOALS SCORED TO DATE

	F.A. Cup.	F.L.	Sth. L.	Cup Matches	Other Matches
CHURCH	—	1	6	—	1
J. DUNN	—	—	1	—	—
FLACK	—	—	1	—	—
FRIAR.....	—	1	1	—	—
FURNESS.....	—	3	—	—	—
HIPKIN	—	—	1	—	—
LAW	—	2	12	—	2
McGARR	—	—	9	—	—
MANDERS	—	7	—	—	—
MARSHALL.....	—	—	1	—	—
MASKELL.....	—	1	7	—	—
O'REILLY.....	—	3	8	—	—
PLUNKETT.....	—	—	5	—	—
PROCTOR.....	—	—	3	—	1
REILLY.....	—	—	—	—	1
WARE.....	—	6	1	—	—
SMALLEY	—	1	—	—	—

PLAYERS' APPEARANCES TO DATE

BURKE	—	20	—	—	1
CASSIDY	—	—	1	—	—
CHURCH	—	7	18	—	1
A. CHAPMAN	—	—	1	—	—
W. CHITTOCK	—	—	4	—	1
COLEMAN	—	1	—	—	2
DUKE	—	15	6	—	—
J. DUNN	—	—	2	—	—
FRIAR	—	14	4	—	1
FLACK	—	12	9	—	—
FURNESS	—	21	—	—	1
HALL	—	6	17	—	1
HALLIDAY	—	9	15	—	2
HIPKIN	—	—	1	—	—
H. HITCHING	—	—	1	—	—
JOHNSON	—	3	19	—	1
LAW	—	5	14	—	2
MACKRELL	—	4	17	—	1
MANDERS	—	19	—	—	1
J. MARSHALL	—	—	11	—	1
McGARR	—	—	23	—	—
MASKELL	—	1	18	—	—
O'REILLY	—	8	13	—	—
PLUNKETT	—	3	21	—	—
PROCTOR	—	10	8	—	1
REILLY	—	2	24	—	1
ROBINSON, B.	—	17	3	—	1
ROBINSON, J.	—	—	20	—	—
RUSSELL	—	6	5	—	1
SMALLEY	—	21	—	—	1
TAYLOR	—	14	2	—	1
TOBIN	—	—	12	—	—
E. TUTTLE	—	—	1	—	—
WARE	—	13	5	—	—
G. ARMSTRONG.....	—	—	1	—	—



Open Fire
Hot
Water
Efficient
Economic

TRIPLEX GRATES

Roasts
Bakes
Boils
Grills

ACKNOWLEDGED THE MOST SUCCESSFUL
COMBINATION GRATE

**WORKING
MODEL
DEMONSTRATED**

'Phone: 2603 (Private Exchange).

'Grams: Guntons (Norwich) 2603

GUNTON, SONS — & — DYBALL

30—42, ST. GEORGE STREET

NORWICH

WHETHER YOU TRAVEL AT HOME OR ABROAD— CONSULT US FOR YOUR LUGGAGE REQUIREMENTS

WE HOLD THE LARGEST SELECTION OF HIGH-CLASS
TRAVELLING GOODS IN EAST ANGLIA



Repairs of Every Description.

Also UMBRELLAS, WALKING STICKS
SEAT STICKS : HUNTING CROPS
RIDING CANES : LEATHER GOODS
DOGGIE REQUISITES :
: : UMBRELLAS RE-COVERED

CASTLE STREET

OFF LONDON STREET

Tel. 1784

NORWICH



WE BUILT THE GROUND IN ELEVEN WEEKS

PILED FOUNDATIONS : STEEL FRAMEWORK
TIMBER DECKING : ROOF COVERINGS
TEA ROOMS : FENCING :

BOULTON & PAUL, LTD.
NORWICH

From the E.D.P., June 28th. Visit of Mr. C. E. Sutcliffe and Mr. Hines to Carrow Road. Mr. Hines said "... the stand was excellent ... and had been built as economically as any they had heard of ..."

THOMAS GILL & SON
CONTRACTORS

RUPERT STREET - NORWICH

Tel.: NORWICH 3842-3

HARRY POINTER (NORWICH LIMITED)
NORWICH

'PHONES

1886/7/8 & 2736

"SPEED WITH EFFICIENCY."

Demolitions, Excavations, Foundations, Roadmaking, Concreting.
Gravel Quarries in all parts of Norfolk.

Mechanically washed and screened Ballast, Shingle, Sand,
Flint, etc. Tarred and Dry Slag, Granite.

For HAULAGE—100 VEHICLES (various Tonnage) AVAILABLE

COLD AND HOT WATER INSTALLATIONS
CENTRAL HEATING : PLUMBING WORK

CARRIED OUT BY

W. J. & F. TAYLOR, LTD.
VAUXHALL ST. - NORWICH

WE BUILT THE GROUND IN ELEVEN WEEKS