



LUTON TOWN FOOTBALL AND ATHLETIC CO. LTD.

OFFICIAL
JOURNAL

PRICE 2d



League—Division II

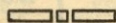
December 27th, 1938.

TOWN LUTON v. NOTTINGHAM FOREST

“TRUE-FORM”
THE FINEST FOOTWEAR
IN THE TOWN



BUY DIRECT FROM THE MAKERS



LOCAL BRANCH:

32, GEORGE STREET

Head Office and Factories: NORTHAMPTON

*Insist upon the
Building Materials for
your new house coming from*

POWDRILL'S

BUILDERS' MERCHANTS
COAL and COKE MERCHANTS
BRICK MANUFACTURERS
SAND & GRAVEL QUARRY OWNERS

GEORGE POWDRILL & SON LTD., 1, 3 & 5, HITCHIN ROAD, LUTON
TELEPHONE 2073 (2 Lines)

HELEY'S CAFE

MILL STREET

NEXT TO PALACE THEATRE, LUTON

DINNERS

11.30 — 2.30

TEAS

3.30 — 6

SUPPERS

6 — 12

SPECIAL

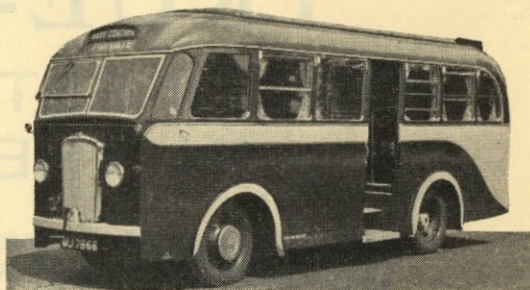
FOOTBALL TEAS

FISH AND CHIPS

SAUSAGE AND MASH

— ETC. —

PROPRIETOR: A. S. HELEY



*Follow the Town
Any match, anywhere
We guarantee to get you there
We take the team
So why not you?
But make it Coopers if you do*

**COOPERS
COSY COACHES**

F. J. COOPER LTD.

OXEN ROAD GARAGE — LUTON

Telephone 731

LUTON
FOOTBALL AND



TOWN
ATHLETIC CO.

Telephone No. 3151-2.

LIMITED.

President: Alderman Harry Arnold, C.A., J.P.

*Vice-President: The Right Honourable E. Leslie Burgin, M.P., P.C., D.L.I.,
(His Majesty's Minister of Transport).*

Directors:

Chairman: Chas. Jeyes, Esq., C.C.

*E. Hugh Woods, Esq. (Vice-Chairman), Frank J. Andrews, Esq., Councillor Horace S. Hewson,
Percival G. Mitchell, Esq., Henry Richardson, Esq., C.C., Philip W. Wright, Esq.*

Team Manager: Mr. Neil McBain.

Secretary: Mr. A. E. Wickson.

Honorary Medical Officer: E. J. Crarer, Esq., M.B., Ch.B.

Honorary Solicitors: Messrs Machin & Co., 17-19, George Street West, Luton.

THE CHAIRMAN'S MESSAGE

AN old French saying is that we British take our pleasures sadly. Today the people across the Channel have a better knowledge of the British, and since they have begun to share our pleasures we know that they can be just as serious where football is concerned.

It depends upon circumstances whether we are serious or gay, and where large issues are at stake, as there are in this great winter game of football, we are compelled to be serious.

At the moment the Board of Directors have cause to recognise how great is their responsibility. We have reached the half-way house, and while we have to admit that our highest hopes have not been realised, we stand in a very fair position, and if our players do as well in the second period we shall be certain to retain Second Division status.

That is better than some clubs that earn promotion, but it is not good enough for us. We could hardly expect speedy promotion again, for our resources are limited, but I want to re-assure supporters that we have very definite plans.

Just as we told you we had planned promotion from the Third Division, and fulfilled that promise, so we are just as determined that this new plan will succeed, and we shall bring First Division football to Luton.

Support has not been all we expected, but we appreciate the fact that we have a staunch and loyal body of upwards of 15,000 for our League games, and upwards

of 6,000 for our London Combination games.

To these, and, indeed, to all our supporters the Board of Directors extends greetings at this happy season. We trust that the New Year will bring health, wealth and prosperity in the fullest sense of the word to you and yours.

Of course, even on such a comparatively small body of men as this Board, there must be differences of opinion on many phases of life, but we are unanimous in the hope that very speedily we shall see a great change in the International situation.

Peace and goodwill should not be merely a seasonable sentiment; it should be a permanent spirit the world over, and I can conceive of no greater blessing.

It is not my part here to express any opinion on the merits of the armament question, but without offence I can say, and my colleagues of the Board unanimously agree, that increased employment in the production of arms affords only a temporal or false prosperity, and what we want more than anything else is the prosperity that would come if the money now being spent in armaments could be devoted to trade and social service from which all classes would benefit.

My colleagues join me in the fervent hope that the New Year of 1939 will bring this endowment of peace among all nations, so that you and yours may be relieved from all anxiety and fear, and look forward each day to increasing measure of joy and happiness.

CHARLES JEYES.

Chairman.

ATTENDANCE BAROMETER

1937		1938		1937				1938						
						£	s.	d.			£	s.	d.	
		Aug.	27	Brighton & Hove Reserves				6356	144	15	3	
Aug.	28			Southend United Reserves	7346	167	0	3				
		Aug.	31	Newcastle United				17689	811	11	4	
Sept.	1			Aston Villa	25349	1299	14	4				
		Sept.	3	Norwich City				16547	747	0	6	
Sept.	4			Manchester United	20610	994	1	2				
		Sept.	7	Tottenham Hotspur Reserves				5955	131	1	7	
Sept.	8			Clapton Orient Reserves	4823	93	6	7				
		Sept.	10	Watford Reserves				7256	163	5	10	
Sept.	11			Chelsea Reserves	7725	175	7	7				
		Sept.	17	Southend Reserves				5826	126	10	7	
Sept.	18			Tottenham Hotspur	23788	1235	7	8				
Sept.	22			Leicester City Reserves	3626	69	19	2				
		Sept.	24	Sheffield United				17436	808	7	6	
Sept.	25			Queens Park Rangers Reserves	6558	142	1	11				
		Oct.	1	Chelsea Reserves				7831	182	7	4	
Oct.	2			Bury	17650	821	19	0				
		Oct.	5	Leicester City Reserves				1300	33	14	8	
		Oct.	8	Tottenham Hotspur				21061	1067	7	8	
Oct.	9			Brighton and Hove Reserves	5236	107	4	10				
		Oct.	15	Bradford				14955	684	3	8	
Oct.	16			Swansea Town Reserves	6592	141	16	2				
		Oct.	22	Brentford Reserves				6698	151	14	7	
Oct.	23			West Ham United	17757	897	18	10				
		Oct.	29	Blackburn Rovers				16819	782	12	4	
Oct.	30			Reading Reserves	5571	116	1	10				
		Nov.	5	Clapton Orient Reserves				5744	129	16	4	
Nov.	5			Blackburn Rovers	16776	818	16	6				
		Nov.	12	West Ham United				18331	910	7	10	
Nov.	13			Millwall Reserves	6929	149	18	5				
		Nov.	19	West Ham United Reserves				6208	137	11	9	
Nov.	20			Chesterfield	17088	802	11	10				
		Nov.	26	Sheffield Wednesday				15936	744	9	0	
Nov.	27			Arsenal Reserves	7116	158	2	0				
		Dec.	3	Bristol City Reserves				5264	112	13	4	
Dec.	3			Fulham	13529	653	13	6				
		Dec.	10	Chesterfield				12747	574	15	0	
Dec.	11			West Ham United Reserves	5487	114	16	2				
		Dec.	17	Crystal Palace Reserves				4006	82	0	10	
Dec.	18			Norwich City	14492	680	2	6				
							224048	9590	0	3	213965	8526	14	11

N.B. The attendance figures for both League II and London Combination matches, include the number of Season Tickets issued. The gate receipts are the net amounts received after Entertainment Tax has been deducted.

Next Match, Saturday, December 31st, 1938.

LONDON COMBINATION

LUTON TOWN RES. v. BOURNEMOUTH RES.

Kick-Off 2.30 p.m.

ADMISSION—Centre Stand 1/6

Stand and Enclosure 1/- Ladies and Boys 6d. : Ground 6d. Boys 3d.

(ALL PRICES INCLUDE ENTERTAINMENT TAX)

SATURDAY, 7th JANUARY, 1939

F.A. CUP (ROUND 3)

LIVERPOOL v. LUTON TOWN

Kick-Off 2.30 p.m.

TICKETS at 4/- each (CENTRE STAND) and 2/6 (WING STANDS)

can be obtained of the Secretary, at the offices of the Club, 70-72, Kenilworth Road, Luton.

LUTON TOWN FOOTBALL AND ATHLETIC Co., Ltd.

OFFICIAL JOURNAL

Yes, Xmas and Notts Forest and mud, (or snow)
And as over the pitch they scud, (or plough)
Each player waits for the end,
When he can meet friend
And get on with the Xmas pud (and how).

Our esteemed manager, Neil McBain,
Has a clever managerial brain.
If he successfully can
Work his three year plan,
He'll save us money again and again.

"A" TEAM FIXTURES UNITED COUNTIES LEAGUE Season 1938-9

Matches will be played at Ford End Road, Bedford.

				F.	A.
Sat., Aug. 27	Wellingborough	A	3
Sat., Sept. 3	Stewart and Lloyds	H	0
Sat., " 17	Wistech	A	2
Mon., " 26	Rushden	A	1
Sat., Oct. 8	Spalding	H	4
Sat., " 22	Biggleswade (Beds. Invit. Cup)	A	4
Sat., " 29	All Blacks (Friendly)	H	10
Sat., Nov. 5	Bedford	A	2
Sat., " 19	Biggleswade	A	3
Sat., " 26	St. Neots	H	4
Sat., Dec. 3	Wellingborough (U.C. Cup)	A	3
Sat., " 17	Bedford Town (Friendly)	A	5
Sat., " 24	Rushden	H	
Mon., " 26	St. Neots	A	
Sat., " 31	Stewart and Lloyds	A	
Sat., Jan. 7	Biggleswade	H	
Sat., " 21	Desborough	A	
Sat., " 28	Biggleswade (U.C. Cup)	A	
Sat., Feb. 4	Kettering	A	
Wed., " 15	Vauxhall (Beds. Invit. Cup)	H	
Sat., " 11	Stamford	H	
Sat., " 18	Wisbech	H	
Wed., Mar. 1	West Ham "A" (Friendly)	H	
Sat., " 4	Bedford	H	
Sat., " 18	Wellingborough	H	
Sat., April 1	Kettering	H	
Fri., " 7	Stamford	A	
Sat., " 8	Spalding	A	
Mon., " 10	Luton League (Friendly)	H	
Sat., " 15	Desborough	H	
Sat., " 29	Northfleet United (Friendly)	H	
Sat., May 6	Northfleet United (Friendly)	A	

UNITED COUNTIES LEAGUE up to and including December 17th.

	Pld.	Won	Drn.	Lost	For	Agst.	P.
Kettering Town	12	9	3	0	31	16	21
Luton "A"	8	5	3	0	19	7	13
Rushden	6	5	1	0	23	12	11
Stamford Town	6	3	1	2	14	13	7
Desborough	9	2	2	5	18	17	6
Wellingborough	7	2	1	4	16	22	5
Wisbech Town	6	1	3	2	18	20	4
Spalding United	6	2	0	4	14	17	4
Bedford Town	6	1	3	2	10	13	4
Biggleswade	8	2	0	6	21	30	4
Corby	3	1	1	1	4	3	3
St. Neots	7	1	0	6	10	28	2

CHRISTMAS APPEAL TO SPORTSMEN

72,000 men and women in this country can never see a football match nor indeed any of the sights of normal men and women. They are blind.

Wireless is the only means by which they enjoy the recreations of normal men and women.

Tens of thousands of sets have been distributed to the blind by the British "Wireless for the Blind" Fund whose only appeal takes place on Christmas Day. Thousands more are still needed.

There was a young player in grave concern
Who was told that football he'd never learn,
But, do you know
He decided to go

And watch that great artiste, Billy Redfern?

Now balls he can trap and balls he can kill,
His technique is great and brilliant his skill

Goals he can score
Can weave and bore
And riddle a defence like Redfern Bill.

There is a great player, a tough one,
And Lor' how at times he doth run,

We're referring you know
To incomparable Joe,
Who's shewn on the programme as Loughran.

There is a great "winger" named C. Clark,
Who was kept in a cage at Queens Park,
They thought he couldn't "fly,"

But Luton knew why,
Now he "soars on the wing" like a lark.

H.B.

ALBUMS

At the request of a number of supporters we have had prepared an Album to contain the Art Plates of our Football Personalities, which we present with this programme at League II matches.

Will any supporters who desire one of these Albums please place their orders at the office, 70-72, Kenilworth Road, Luton. Price 1/6 each.

DO NOT MISS OBTAINING A COPY OF THE PROGRAMME ON SATURDAY, JANUARY 14th. It will contain a full sized autographed Art Plate of Bert Lutterloch.

Back numbers of previous programmes including Art Plates, can be obtained on application to the Editor, 70-72, Kenilworth Road, Luton. Price 2d.

PURCHASE A PROGRAMME AND HELP THE FOOTBALL CLUB.

Messrs SELL & MITCHELL

take this opportunity to wish you
a Happy Christmas and Health
and Prosperity in the New Year

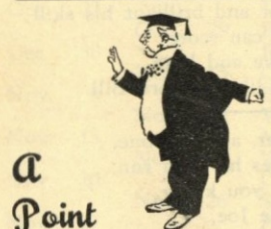
Auctioneers, Land & Estate Agents

7 & 9, PRINCESS STREET, LUTON

95, HIGH STREET NORTH, DUNSTABLE

'PHONE 2003/4

'PHONE 354



A
Point
to remember!
E. A. ALLEN
the Printer of this
Programme

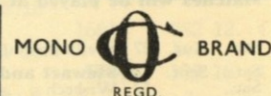
WILL GIVE SERVICE
AND SATISFACTION
424, DUNSTABLE ROAD
LUTON
Telephone 1626

To-Day's Half-Time Scores

FIRST LIST

A	ASTON VILLA	v.	SUNDERLAND
B	CHARLTON A.	v.	ARSENAL
C	CHELSEA	v.	LEEDS UNITED
D	DERBY CO'NTY	v.	EVERTON
E	HUDDERSFIELD	v.	BLACKPOOL
F	LEICESTER C.	v.	MANCH. UN.
G	LIVERPOOL	v.	STOKE CITY
H	MIDDLESBRO'	v.	BIRMINGHAM
K	PORTSMOUTH	v.	BRENTFORD
L	PRESTON N.E.	v.	BOLTON WAN.
M	WOLVES	v.	GRIMSBY T.
N	BURY	v.	BLACKBURN

NOTE—The Letter in the Programme corresponds with the letter on the Board—thus A 0—1 means that the first-named Club has scored 0 and their opponents 1.



Specialities

Paint and Enamel
Manufacturers

"Stuart" Series
Wallpapers

**OGDEN &
CLEAVER**

Stuart Street, LUTON

TELEPHONE 580

LUTON GAS COMPANY

JUST A TURN OF THE TAP
AND GAS GIVES INSTANT
HOT WATER, REAL FIRE-
SIDE COMFORT, CAREFREE
COOKING

Be up-to-date with Gas

Showrooms—GEORGE STREET
and DUNSTABLE ROAD

THE BEST DEFENCE

against

WINTER'S ATTACK

'OXAVIN'
TONIC WINE

Large Bottle 4/6
Medium Bottle 2/6

L. GREENER, ^{Wine} Merchant

60, WELLINGTON STREET, LUTON

(Corner of Stuart Street)

H. R. WILLIAMS

REGISTERED
ELECTRICAL CONTRACTOR
and Member of the
Electrical Contractors' Association

17, DURHAM ROAD
LUTON

'PHONE: LUTON 2012

NEWBERY

& CO. (LUTON) LIMITED

32/36, CROMWELL ROAD
LUTON

Builders' Merchants

Ironmongers

Door and Gate Importers

PHONE 294

PRIVATE 511

PHONE 223

EST. 1860

WHITE'S

again supply

LUTON TOWN
FOOTBALL CLUB
WITH THEIR
FOOTBALL
BOOTS

THEY know the Best

H. WHITE (LUTON)
LTD.

FOOTWEAR

of every description

MANCHESTER STREET
LUTON

To-Day's Half-Time Scores

SECOND LIST

A	CHESTERFIELD	v.	BRADFORD
B	MANCH. CITY	v.	TRANMERE R.
C	NEWCASTLE	v.	NORWICH C.
D	PLYMOUTH	v.	COVENTRY C.
E	WEDNESDAY	v.	FULHAM
F	SOUTHAMPTON	v.	SHEFFIELD UN.
G	SWANSEA T.	v.	WEST BROM.
H	TOTTENHAM	v.	BURNLEY
K	WEST HAM U.	v.	MILLWALL A.
L	ALDERSHOT	v.	CRYSTAL PAL.
M	BRIGHTON & H.	v.	BRISTOL CITY
N	BRISTOL ROV.	v.	BOURNEM'UTH

S.J. HAWKINS
STATION WORKS. FLITWICK BEDS.

'PHONE: FLITWICK 253

PNEUMATIC TYRED
TRUCKS, TROLLEYS AND
BARROWS
for all trades

WHOLESALE AND RETAIL

Send for List L101 Post Free

CYCLES & REPAIRS

Get your new machine from

S. A. LEWIS

138, DUNSTABLE ROAD
LUTON

PHONE 807

Terms from

2/-
Weekly

All kinds of
repairs executed
by experienced
workmen

MARES

for men's
JAEGER
for
WARMTH

Charles
MARES Limited
GEORGE STREET, LUTON
And at St. Albans

TODAY

PALACE THEATRE LUTON

TODAY

Alfred Hitchcock's Thriller

— THE — **LADY VANISHES**

starring **MARGARET LOCKWOOD**
PAUL LUKAS **MICHAEL REDGRAVE**

And Full Supporting Programme

FIRST PRIZE won by **J.W. GREEN'S** **BITTER BEER**

other awards for

OATMEAL STOUT and LUTONIAN STOUT

AT BREWERS' EXHIBITION, LONDON

November, 1938

J. W. GREEN LIMITED, The Brewery, LUTON

Telephone - Luton 3131

L-M-S RAILWAY

SATURDAY, JANUARY 7th
— 1939 —

Liverpool v. Luton Town
(CUP TIE)

SPECIAL
EXCURSION TRAIN

will leave Luton 8.10 a.m.
Arrive Liverpool 1.8 p.m.
Depart Liverpool 7.25 p.m.

FARE 13/- RETURN

For times of departure from
other stations see bills

Football, Rugby,
Hockey, Badminton,
Table Tennis,
Miniature Billiard
Tables, Dominoes
and all Indoor Games

DART BOARDS and
DARTS a Speciality

Roller Skates and Boots
in Great Variety

G. A. WILD
AND SONS

Sports Outfitters

14, Manchester Street, Luton
103, High Street N., Dunstable

BOOK AT
BAILEY'S
FOR
LONDON COASTAL COACHES
ALL INDEPENDENT SERVICES
JERSEY AIRWAYS
LONDON THEATRES
AND
AMUSEMENTS

Daily Services to all
parts of Great Britain

TOBACCONIST
AND BOOKING AGENT

38, NEW BEDFORD ROAD
LUTON
Phone 1972

LUTON TOWN

Shirts White
Knickers Black
Stockings Black with White Tops

Coen
Goal

2
King
Right Back

4
Finlayson
Right Half

7
Clark
Outside Right

8
Redfern
Inside Right

Referee—
G. DUTTON
(Warwick)

12
Beaumont
Outside Left

13
Surtees
Inside Left

17
Clark
Left Half

20
Munro
Left Back

NOTTINGHAM FOREST

Shirts Red
Knickers White
Stockings Black with Red Tops

22
Ashton
Goal

League—Division II

3
Dunsmore
Left Back

6
Roberts
Left Half

10
Connelly
Inside Left

11
Stephenson
Outside Left

Linesmen—
Blue Flag: G. L. ILIFFE (Braunstone)
Red Flag: F. T. ADAMS (Croydon)

15
Fryer
Inside Right

16
Getty
Outside Right

19
Pretty
Right Half

21
McCall
Right Back

Kick-Off 2.30 p.m.

MODERN
FIREPLACES

HEATING
APPLIANCES

Up-to-date Sanitary Fittings
in White and Colours

For ARTISTIC WALLPAPERS

**CHARLES
BIRD & SONS
LTD.**
COLLINGTON STREET
LUTON

Telephone: Luton 1255/1256

For QUALITY PAINTS

"Triplex" Safety Glass
Motor Screens (Fitted)

Makers of
MIRRORS—SPLASH BACKS—GLASS
SHELVES & GLASS FIRE SCREENS

HARRY CANHAM

Cardboard Box

Packing Case, Ply Box and

Crate Manufacturer

9a, MARKET HILL, LUTON

TELEPHONE 458

WAKE UP YOUR LIVER BILE

*without Calomel—and you'll jump out of bed in
the morning full of vim and vigour*

YOUR LIVER should pour out
two pints of liquid bile into
your system daily. If this bile is
not flowing freely, your food
doesn't digest. It just decays
inside you. Gas bloats up your
stomach. You get constipated.
Your whole system is poisoned
and you feel sour, sunk, and the
world looks punk.

Laxatives help a little, but a
mere bowel movement doesn't

get at the cause. It takes those
good old Carters Brand Little
Liver Pills to get these two pints
of bile flowing freely and make
you feel "up and up." Harmless,
gentle, yet amazing in making
bile flow freely. Ask
for Carters Brand Little
Liver Pills.

Stubbornly refuse any-
thing else. 1/3 and 3/- at
all chemists.

NOW ALSO IN
PENNYWORTHS
EVERYWHERE

There can be no
"PENALTY AREA"
for you if you are
BUYING YOUR OWN HOUSE
It is a Safe Investment

Write for our attractive terms:

**LUTON & MIDLANDS
BUILDING SOCIETY**

Telephone: Luton 1067

11, George St.
West
LUTON

WEBDALE'S
of WELLINGTON STREET

— FOR —

KITCHEN EQUIPMENT

AND ALL

HOUSEHOLD REQUIREMENTS

AT LOWEST PRICES

21 to 27, WELLINGTON STREET
'Phone 41 **LUTON**

Charnley
and Sons
REGISTERED
OPTICIANS

NATIONAL HEALTH
INSURANCE

On the Official List of
H.S.A. OPTICIANS

11, Wellington Street
LUTON
Telephone 1808

Over 50 years in the
Printing Trade
in Luton
○○○○○

W. F. BUNKER

WILL HELP YOU IN
THE PRODUCTION
OF YOUR PRINTING
REQUIREMENTS

26a, CHAPEL STREET
LUTON
PHONE 224

E. A. GREEN

BOOKSELLER
NEWSAGENT
STATIONER

*Luton's Most Progressive
Circulating Library*

21a, New Bedford Road
and 228, Biscot Road
LUTON

Telephone 476

F. WHITE

BUILDER
and
CONTRACTOR
141,
Stockingstone Road
LUTON

ALL CLASSES OF
REPAIRS, PAINTING
AND DECORATING
UNDERTAKEN

Estimates Free

**To-Day's Half-Time Scores
THIRD LIST**

A	EXETER CITY	v.	SOUTHEND U.
B	MANSFIELD T.	v.	IPSWICH T.
C	NEWPORT CO'	v.	SWINDON T.
D	NOTTS. CO'TY	v.	WATFORD
E	PORT VALE	v.	NORTHAMPT'N
F	QUEEN'S P. R.	v.	CARDIFF C.
G	TORQUAY U.	v.	CLAPTON O'
H	WALSALL	v.	READING
K	ACCRINGTON	v.	BARNSELY
L	BRADF'D CITY	v.	BARROW
M	CREWE ALEX.	v.	YORK CITY
N	STOCKPORT C.	v.	OLDHAM A.

W.
CHAMBERLAIN
Proprietors—
A. M. Chamberlain
R. Deadman

106, Dunstable Road
LUTON

Best British Made
Brushes and Brooms
Enamel Ware

City of London
White Lead Paint

Messrs Merrediths & Co.
Merlac Enamel Paints

Fadeless Wall Paper
Ask for Pattern Books

—□—
A TRIAL SOLICITED

W. HOLES

3, Gordon Street, Luton
Coal and
Coke Merchant

Authorised Agent for
Luton Gas Company's
large and graded coke

Agent for
L.M.S. Passenger Dept.

Telephone 210

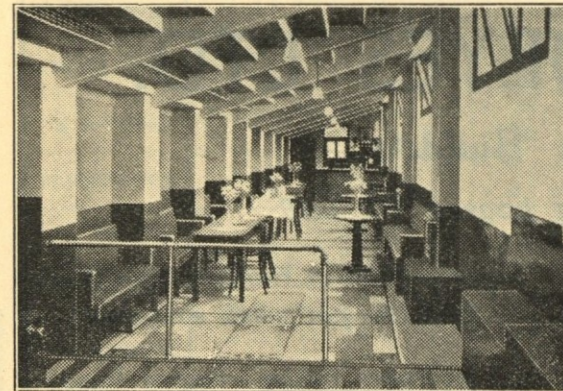
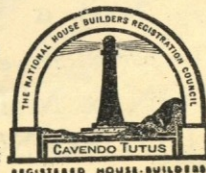


TELEPHONE:
LUTON 2126

P. W. SMITH

Builder — Contractor
High Class Decorator

418, DUNSTABLE ROAD
LUTON



The Bobbers Stand Club wish every Football Supporter a Merry Christmas. We publish a list of the Prize Winners of our Christmas Draw and we wish to thank everyone who helped to make it a success. On Wednesday, December 28th, we are giving the Bobbers' children a rare treat in a Christmas Party to be held in the Bury Park Memorial Hall.

Now supporters, on January 1st, you can become members of our Club for 1/2 per year. Make a New Year's Resolution to be a member of the Bobbers Stand Club—you will never regret it.

LUTON BOBBERS STAND CLUB

PRIZE WINNERS IN CHRISTMAS DRAW

Prize No.	Ticket No.	Prize No.	Ticket No.	Prize No.	Ticket No.
1	3640	19	23638	37	23236
2	21524	20	13736	38	15621
3	23745	21	27047	39	3752
4	8571	22	18106	40	1183
5	15399	23	18100	41	26855
6	18875	24	24987	42	2792
7	5513	25	15332	43	19416
8	23154	26	25589	44	7540
9	22709	27	22838	45	4315
10	11838	28	22458	46	23880
11	26163	29	8649	47	21388
12	26781	30	1907	48	17522
13	12127	31	11479	49	7187
14	22568	32	25062	50	1497
15	20800	33	10663	51	14558
16	27263	34	24041	52	1918
17	27378	35	15265	53	6747
18	18500	36	7805	54	4795

**THE
CENTRAL
RESTAURANT**

20/22/24, CHEAPSIDE
LUTON

○○○

SEATING FOR 300 ESTABLISHED 60 YEARS

Phone 172 and book a table
and have your meal in comfort

WE CAN CATER FOR YOU
ANYWHERE
ANY TIME
ANY NUMBER

**A. E.
NICHOLLS**

Wholesale
CONFECTIONER & TOBACCONIST

CAN SUPPLY YOU WITH
EVERYTHING YOU WANT
FOR THE TOBACCO AND
CONFECTIONERY TRADE
AT LOWEST PRICES



Prompt Delivery and Civility

16, MILL STREET, LUTON

'Phone: Luton 902

CHARLES JEYES LTD.

The Luton Builders

have the following houses TO LET

3 Bedroom House—Black Swan Lane
Rent 16'6 per week inclusive

Superior Villa in Humberstone Road
Rent 19/- per week exclusive

3 Bedroom House—Cavendish Road
Rent 16' per week exclusive

3 Bedroom House—Napier Road
Rent 14/- per week exclusive

3 Bedroom House—Beechwood Road
Rent 15' per week exclusive

Apply

17a, WINDSOR STREET, LUTON

TELEPHONE 594

Good Cheer

Good Health

This Festive Season

LUTON MOTOR Co., Ltd.

SOLE WHOLESALE FORD DISTRIBUTORS FOR THIS DISTRICT

BEECH HILL, DUNSTABLE ROAD, LUTON - 'Phone 15

Football League Division II — RESULTS AT A GLANCE

	Blackburn R.	Bradford	Burnley	Bury	Chesterfield	Coventry City	Fulham	Luton Town	Manch. City	Millwall	Newcastle U.	Norwich City	Notts Forest	Plymouth A.	Sheffield U.	Sheffield W.	Southampton	Swansea T.	Tottenham H.	Tranmere R.	West Brom.	West Ham U.
Blackburn Rovers	H	+	4 0	2 3	2 0	0 2	...	1 1	3 3	1 4	3 0	6 0	3 1	4 0	1 2	0 3	3 1	4 0	3 1	3 2	...	3 1
Bradford	A	0 4	2 2	1 0	...	1 3	0 4	2 2	4 2	1 2	2 2	...	3 1	2 1	1 1	0 2	2 1
Burnley	H	3 2	+	0 1	2 3	1 1	0 0	3 2	1 1	1 3	0 1	3 1	2 1	0 1	1 3	2 1	2 1	1 1	2 2	3 0	4 4	...
Bury	H	...	0 1	+	3 1	0 0	0 2	2 5	0 4	2 1	0 1	...	1 4	2 1	1 1	...	3 1	0 3	0 1
Chesterfield	H	0 2	3 2	1 3	+	0 0	0 2	0 5	0 3	0 0	0 6	1 3	2 1	1 0	2 2	0 2	5 2	3 3	3 1	0 3	3 3	1 1
Coventry City	H	0 2	3 2	1 3	+	0 0	0 2	0 5	0 3	1 3	0 6	1 3	2 1	1 0	1 1	3 1	6 1	1 1	2 2	1 0	0 1	1 0
Fulham	H	0 2	3 2	1 3	+	0 0	0 2	0 5	0 3	1 3	0 6	1 3	2 1	1 0	1 1	3 1	6 1	1 1	2 2	1 0	0 1	1 0
LUTON TOWN	H	1 1	2 2	2 3	5 0	0 1	1 2	+	2 1	1 2	2 1	2 1	2 2	0 0	2 0	1 5	...	3 2	0 0	3 2	0 3	1 2
Manchester City	H	3 3	2 4	1 1	3 0	3 0	3 5	1 2	+	1 6	4 1	4 1	4 3	0 0	3 2	1 3	2 1	5 0	2 0	...	1 3	2 4
Millwall	H	4 1	3 1	1 1	0 0	1 2	1 2	2 1	6 1	+	2 2	2 0	5 0	3 0	1 2	...	0 1	1 1	0 4	0 2	1 5	...
Newcastle United	H	0 3	1 0	3 2	6 0	0 1	1 2	1 2	4 0	2 1	0 0	...	1 0	1 0	0 1	5 1	5 1	1 1
Norwich City	H	0 6	1 3	4 0	3 1	3 0	2 2	1 2	1 4	0 2	0 1	2 1	0 4	...	2 1	3 0	1 4	2 0	2 3	0 2
Notts Forest	H	1 3	2 1	1 2	1 7	3 0	2 2	1 2	3 4	0 5	+	0 1	0 4	...	1 0	1 0	0 1	5 1	5 1	1 1
Plymouth Argyle	H	0 4	2 2	1 0	0 1	0 0	0 0	0 3	1 2	1 2	3 0	2 1	0 2	...	2 1	1 2	2 1	3 1	2 1	1 2
Sheffield United	H	2 1	3 1	0 1	0 0	0 2	2 3	0 5	0 4	...	+	0 3	0 2	...	2 2	1 1	2 1	1 1	...	3 1
Sheffield Wednesday	H	3 0	1 3	2 2	...	5 1	3 1	...	0 2	...	2 0	1 2	0 0	+	...	2 1	2 2	2 0	4 3	...
Southampton	H	1 3	1 2	2 5	1 6	0 3	1 1	...	1 2	1 0	0 1	1 2	2 2	2 1	3 4	1 1	3 3	2 0	1 5	3 2
Swansea Town	H	0 4	1 1	3 3	1 1	2 4	1 1	2 3	0 5	1 1	0 1	0 3	2 1	2 1	+	4 1	1 2	3 1	2 1	2 1
Tottenham Hotspur	H	1 3	2 2	2 2	1 0	0 0	0 2	4 0	1 0	4 1	1 2	1 4	...	+	2 5
Tranmere Rovers	H	1 3	...	1 3	...	2 2	1 0	0 1	0 2	1 1	2 1	1 1	...	2 0	3 4	2 1
West Bromwich A.	H	2 3	0 3	3 0	0 1	1 2	0 1	2 3	0 2	2 0	1 5	0 2	1 1	0 2	...	0 2	+	3 1	1 6
West Ham United	H	1 2	...	3 3	...	4 1	3 1	0 3	3 1	5 1	5 2	3 2	3 4	...	4 3	1 3	+	3 2
	H	1 3	...	1 1	0 1	...	2 3	2 1	4 2	0 0	5 2	1 2	6 1	2 3	+

FIXTURES, 1938 - 9

FIRST XI Division II				F. A.			
Sat., Aug. 27	West Bromwich Albion	...	A	0	3		
Wed., .. 31	Newcastle United	...	4	1	H	2	1
Sat., Sept. 3	Norwich City	...	1	1	H	2	1
Mon., .. 5	Coventry City	...	1	2	A	0	1
Sat., .. 10	Manchester City	A	2	1	
Sat., .. 17	Plymouth Argyle	...	4	2	A	1	4
Sat., .. 24	Sheffield United	...	2	3	H	2	0
Sat., Oct. 1	Burnley	...	2	3	A	2	3
Sat., .. 8	Tottenham Hotspur	...	2	4	H	0	0
Sat., .. 15	Bradford	...	4	2	H	2	2
Sat., .. 22	Swansea Town	...	1	1	A	3	2
Sat., .. 29	Blackburn Rovers	...	4	1	H	1	1
Sat., Nov. 5	Tranmere Rovers	A	3	2	2
Sat., .. 12	West Ham United	...	2	2	H	1	2
Sat., .. 19	Bury	...	4	3	A	5	2
Sat., .. 26	Sheffield Wednesday	...	2	2	H	1	5
Sat., Dec. 3	Fulham	...	1	4	A	1	2
Sat., .. 10	Chesterfield	...	1	1	H	5	0
Sat., .. 17	Millwall	A	1	2	
Sat., .. 24	West Bromwich Albion	H			
Mon., .. 26	Nottingham Forest	...	0	1	A		
Tues., .. 27	Nottingham Forest	...	2	2	H		
Sat., .. 31	Norwich City	...	4	0	A		
Sat., Jan. 7	Liverpool (F.A. Cup)	A			
Sat., .. 14	Manchester City	H			
Sat., .. 21	Plymouth Argyle	...	1	1	H		
Sat., .. 28	Sheffield United	...	0	2	A		
Sat., Feb. 4	Burnley	...	3	1	H		
Sat., .. 11	Tottenham Hotspur	...	0	3	A		
Sat., .. 18	Bradford	...	1	1	A		
Sat., .. 25	Swansea Town	...	5	1	H		
Sat., Mar. 4	Blackburn Rovers	...	2	2	A		
Sat., .. 11	Tranmere Rovers	H			
Sat., .. 18	West Ham United	...	0	0	A		
Sat., .. 25	Bury	...	0	1	H		
Sat., April 1	Sheffield Wednesday	...	0	4	A		
Fri., .. 7	Southampton	...	1	3	H		
Sat., .. 8	Fulham	...	4	0	H		
Mon., .. 10	Southampton	...	6	3	A		
Sat., .. 15	Chesterfield	...	2	5	A		
Sat., .. 22	Millwall	H			
Sat., .. 29	Newcastle United	...	3	1	A		
Sat., May 6	Coventry City	...	1	4	H		

LEAGUE TABLES

up to and including December 17th.

LEAGUE DIVISION II

	Pld.	Won	Lost	Drn.	For	Agst.	P.
Blackburn Rovers	20	12	6	2	48	27	26
Sheffield United	19	10	3	6	33	20	26
West Brom. A.	20	12	6	2	54	39	26
Newcastle United	20	11	6	3	39	25	25
Fulham	20	9	5	6	34	24	24
Coventry City	19	10	5	4	29	24	24
Tottenham Hotspur	19	8	5	6	34	28	22
Sheffield Wednesday	19	8	6	3	45	33	21
Manchester City	19	9	7	3	45	39	21
Millwall	19	8	7	4	36	27	20
West Ham United	20	8	9	3	39	32	19
Chesterfield	19	8	8	3	32	31	19
LUTON TOWN	19	8	8	3	34	34	19
Plymouth Argyle	19	7	8	4	24	26	18
Bradford	19	6	7	6	33	38	18
Burnley	20	6	8	6	26	33	18
Bury	19	6	7	6	27	36	18
Southampton	19	7	10	2	30	39	16
Notts Forest	19	4	10	5	24	44	13
Norwich City	19	6	12	1	25	46	13
Swansea Town	19	1	9	9	21	43	11
Tranmere Rovers	19	3	15	1	19	43	7

LONDON COMBINATION

	Pld.	Won	Lost	Drn.	For	Agst.	P.
Arsenal	23	16	5	2	85	33	34
LUTON TOWN	23	14	5	4	63	31	32
Chelsea	21	14	6	1	47	28	29
Brighton & Hove A.	21	13	6	2	42	34	28
Queens Park Rangers	21	11	5	6	55	27	27
Tottenham Hotspur	22	12	7	3	57	31	27
West Ham United	21	12	6	3	60	39	27
Brentford	22	11	6	5	58	40	27
Coventry City	20	13	7	0	60	27	26
Bournemouth	23	8	8	7	48	52	23
Watford	22	10	9	3	34	48	23
Southend United	19	9	6	4	39	30	22
Portsmouth	22	8	8	6	48	42	22
Swansea Town	24	9	11	4	30	53	22
Fulham	22	8	9	5	32	42	21
Crystal Palace	22	8	10	4	45	45	20
Millwall	22	7	10	5	33	48	19
Charlton Athletic	22	6	10	6	30	34	18
Leicester City	23	8	13	2	46	62	18
Bristol City	24	8	16	0	33	64	16
Southampton	22	6	13	3	36	53	15
Reading	21	4	12	5	40	74	13
Northampton	21	4	15	2	24	57	10
Clapton O.	23	2	18	3	19	80	7

Edward Martell

& Co., Ltd.

TELEPHONE
896-7

Coal and Coke Merchants

ESTABLISHED
1879

24, UPPER GEORGE STREET, LUTON

Burn "Hucknall" Ashless Coal

It Scores Every Time!!

Popular Price! Saves Labour!! Great Heat!!!

WHY NOT TRY IT?

CARRY ON

LUTON TOWN!

a packet of

SWEET

ROSEMARY

TOBACCO

is always enjoyable

W. & F. FAULKNER

LONDON

BRANCH OF THE IMPERIAL TOBACCO CO.
(OF GREAT BRITAIN AND IRELAND), LIMITED

SEE that you "SEE"
all of the game
comfortably,

if you cannot do so

CALL AND SEE

A. G. PRATT

M.P.S., F.S.M.C.

CHEMIST AND OPTICIAN

169, DUNSTABLE ROAD, LUTON

(Corner Kenilworth Road)

Recognised by the O.B.A.C. for
National Health Insurance Benefit

'PHONE 708

H. G. PARTRIDGE & Co.

wish all their many
Friends and Customers
the Compliments
of the Season

You need



**EASY-RUNNING
& RELIABILITY**

in the Country!

MODELS FROM £5:10:0 CASH
(Sturmey-Archer 3-speed gear 21/- extra, cash)
Deferred Terms from
5/- down and 12 equal monthly payments (from
10/7). Sturmey-Archer 3-speed gear 2 1/2 extra,
monthly. Call for "The Book of the Raleigh."

RALEIGH
THE ALL-STEEL BICYCLE

NO CYCLE IS
COMPLETE
WITHOUT THE
FAMOUS STUR-
MEY-ARCHER
3-SPEED GEAR.

Local Agents—

PARTRIDGES, 10-12, CHAPEL STREET, LUTON

Printed by E A Allen, 424, Dunstable Road, Luton. 'Phone 1626.
Published by Luton Town Football and Athletic Co., Ltd., Kenilworth Road, Luton.